

JAIL PROFILE SURVEY

1999, 4th QUARTER SURVEY RESULTS

FACILITIES STANDARDS AND OPERATIONS DIVISION

BOARD OF CORRECTIONS

STATE OF CALIFORNIA
600 Bercut Drive
Sacramento, CA 95814-0185
(916) 445-5073

JAIL PROFILE SURVEY

EXPLANATION OF RESULTS

The following pages contain the Jail Profile Survey results for the fourth quarter of 1999. Page 1 contains the quarterly totals based upon the monthly and quarterly data submitted to us by the participating jurisdictions. Pages 2 and 3 show the trend data for variables we have been tracking for the last ten years. The remainder of this page provides explanations and clarifications of the data presented.

Page 1

- Unless otherwise noted, "projected totals" are based upon the average per day for the variable in question. For example, there was an average of 75,548 inmates per day in local jails (excluding Type I's) during the three-month span of October to December 1999.
- For some variables, we did not receive data from all jurisdictions. We compute the percentage of the ADP which were housed in the jurisdictions that did supply us with data. For example, 96% of the jurisdictions, representing 96% of the State's ADP, indicated the number of felony inmates in their facilities. In these cases, we projected what the statewide number of felony inmates would have been if we received felony inmate data from the counties that house the remaining 4% of the inmates.
- The number for "Bookings" is the average of the monthly totals for October, November and December.
- For the following variables, the numbers presented are the totals as of the mid-quarter (i.e., November 15, 1999): Pretrial Release, Early Release, 2 and 3 Strikes, Felony Warrants, Misdemeanor Warrants, Juveniles in Custody and Undocumented Aliens.
- Assaults is the total number of serious inmate assaults on staff (resulting in a crime report), statewide, during the fourth quarter of 1999.

Pages 2 and 3

- The data in the 10-Year Summary tables are based upon survey data which the Board has gathered since the early 1980's.
- Prior to 1995, yearly averages were reported to the Board on an annual basis. Yearly averages from 1996 on have been the average across the 12 calendar months. In 1995, the yearly figure reported is the fourth quarter average, since we do not have data from the first three quarters.

JAIL PROFILE SURVEY

CALIFORNIA COUNTY JAILS - FOR MONTHS OF OCTOBER - DECEMBER 1999

	<u>Projected Total</u>
Average Daily Population (ADP)	
Highest One Day Count ^a	80,529 ^b
ADP	75,548 ^c
Holding Areas	866
Average "Under the Roof" ^d	76,414 ^e

	<u>Projected Total</u>
Inmates from Other Jurisdictions	
Inmates Housed on Federal Contract	4,020
Inmates Housed on Contract with CDC	1,948
Inmates from Other Counties on Contract	13
Inmates Awaiting Transport	1,120
Total	7,102

Categories of Inmates	
Felony	53,582
Misdemeanor	21,227
Unspecified	740
Total	75,548
Non-Sentenced Males	39,446
Non-Sentenced Females	5,331
Sentenced Males	26,323
Sentenced Females	4,448
Total	75,548
Maximum Security Inmates	34,601
Medium Security Inmates	20,624
Minimum Security Inmates	20,290
Unspecified	33
Total	75,548

Number of People Released Per Month Due to Lack of Space	
Pretrial Release	5,954
Early Release	10,582
Total	16,535^e
Inmates with 2 and 3 Strikes	
2 Strike Inmates	2,822 ^f
3 Strike Inmates	2,103 ^f
Total	4,925^e

Unserviced Warrants	
Felony Warrants	235,415 ^f
Misdemeanor Warrants	2,107,820 ^f
Total	2,343,235

Other Jail Profile Survey Variables	
Bookings per Month	92,308 ^f
Juveniles in Custody	31 ^f
Undocumented Aliens	8,226 ^f
Assaults	238 ^f

Special Use Beds	
Medical Beds	915
Mental Beds	2,945

^a The highest one day inmate population counts in the 64 jurisdictions.

^b Unless otherwise indicated, the numbers reported in this table are an average across the days covered by the report.

^c The Average Daily Population in all jurisdictions is for the days covered by the report.

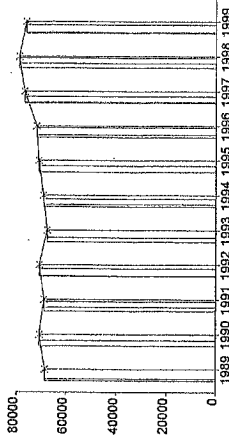
^d The term "Under the Roof" is the sum of the Average Daily Population plus the inmates in Holding Areas.

^e Grand totals may not add up exactly to the column totals due to rounding.

^f This number is the average for the quarters represented by the span of time covered by this report.

Average Daily Population

10 Year Summary									
1989	1990	1991	1992	1993	1994	1995	1996	1997	1998
68,535	70,845	68,923	70,853	67,576	69,233	71,107	72,029	76,906	79,149



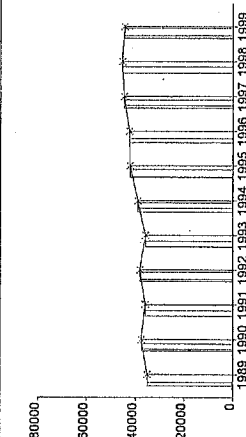
Between the 1st Quarter of 1998 and the 4th Quarter of 1998, the ADP dropped by 2,672 inmates. Between the 1st Quarter of 1999 and the 4th Quarter of 1999, the ADP dropped an additional 1,000 inmates. The ADP for the 4th Quarter of 1999 (75,548) is very similar to the ADP for the 1st Quarter of 1997 (75,684). These findings seem to support what we believe is the most likely theory, that there is a ceiling on the statewide jail population that is determined by the number of available beds. Without significant additional construction of new beds, we believe that the ADP will continue to fluctuate between 75,000 and 80,000 inmates (as it has for the last three years). In order for this to happen, a considerable number of pre-trial and early releases will have to occur to prevent crowding.

Quarterly Results

	Q1	Q2	Q3	Q4	Average
1998	79,620	80,391	79,639	76,948	79,149
1999	76,567	76,199	76,935	75,548	76,312

Non-Sentenced ADP

10 Year Summary									
1989	1990	1991	1992	1993	1994	1995	1996	1997	1998
35,264	37,630	36,064	38,110	35,899	39,122	42,237	42,541	44,590	45,303



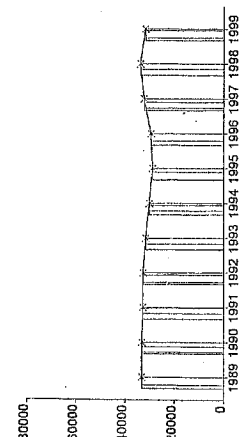
The non-sentenced ADP (44,777) dropped only slightly (by 271 inmates), whereas the sentenced ADP (30,772) declined by over 1,100 inmates. This is consistent with the fact that the early releases of sentenced inmates are almost double the number of pretrial releases (10,582 versus 5,964 per month).

Quarterly Results

	Q1	Q2	Q3	Q4	Average
1998	45,283	45,575	46,069	44,286	45,303
1999	44,087	44,043	45,048	44,777	44,489

Sentenced ADP

10 Year Summary									
1989	1990	1991	1992	1993	1994	1995	1996	1997	1998
33,271	33,215	32,859	32,743	31,677	30,142	28,870	29,488	32,316	33,846



Over the last three years, the sentenced ADP has fluctuated much more than the non-sentenced ADP. From 1997 on, the quarterly highest and lowest non-sentenced ADP differed by only 3.3%. During the same period, the highest and lowest sentenced population differed by 7.7%. This finding seems to reflect the fact that jail administrators, when considering early release options, have more information regarding the sentenced inmates' risk factors than for the potentially more dangerous pre-adjudicated inmates.

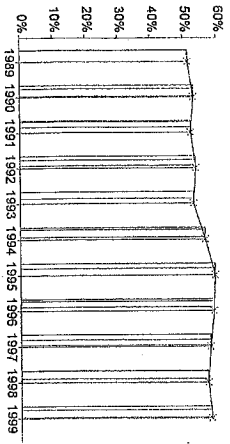
Quarterly Results

	Q1	Q2	Q3	Q4	Average
1998	34,337	34,816	33,570	32,662	33,846
1999	32,480	32,156	31,886	30,772	31,823

Percentage Non-Sentenced

10 Year Summary									
1989	1990	1991	1992	1993	1994	1995	1996	1997	1998
51%	53%	52%	54%	53%	57%	59%	59%	58%	57%

Quarterly Results					Average
Q1	Q2	Q3	Q4		
1998	57	57	58	58	57
1999	58	58	59	59	58

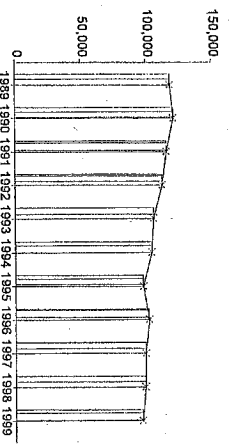


Since the sentenced ADP has dropped faster than the non-sentenced ADP, the result is another rise in the percentage on non-sentenced inmates. For the calendar year 1999, the non-sentenced population was 58% of the total population. Nevertheless, for the last two quarters, the percentage of non-sentenced was 59%. In 2000, if the percentage keeps rising at its current pace, the percentage of non-sentenced will break the 60% mark for the first time.

Average Number of Persons Booked Per Month

10 Year Summary									
1989	1990	1991	1992	1993	1994	1995	1996	1997	1998
118,253	120,716	115,313	112,009	105,593	103,996	97,589	101,939	99,180	98,915

Quarterly Results					Average
Q1	Q2	Q3	Q4		
1998	97,687	100,754	102,148	95,070	98,915
1999	96,666	98,017	100,349	92,302	96,834



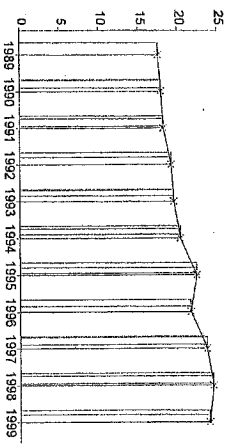
The average number of persons booked per month in 1999 (96,834), was the lowest yearly average in over 10 years. The average number of bookings in 1989 was 118,253. The dip in bookings in the 4th Quarter occurred again in 1999 (over 8,000 bookings lower than the 3rd Quarter). This decline in 4th Quarter bookings is one of the phenomena that has been documented by the Jail Profile Survey during the five years of its existence.

Average Length of Stay

10 Year Summary									
1989	1990	1991	1992	1993	1994	1995	1996	1997	1998
17.6	17.9	18.2	19.2	19.5	20.3	22.3	21.6	23.7	24.4

Quarterly Results					Average
Q1	Q2	Q3	Q4		
1998	24.7	24.2	24.0	24.8	24.4
1999	23.8	23.6	23.5	25.1	24.0

The Average Length of Stay was slightly lower in 1999 than in 1998 (24.0 days versus 24.4 days). This is only the second time in 10 years that the Average Length of Stay has declined. The last decline was in 1996. However, the very next year the index took a big jump. Time will tell if the decline in 1999 is the beginning of a new downward trend or not.



**AVERAGE DAILY POPULATION
NON-SENTENCED/SENTENCED MALE/FEMALE
CALIFORNIA COUNTY JAILS - FOR MONTHS OF OCTOBER - DECEMBER 1999**

Jurisdiction	Non-sentenced						Sentenced						Total #
	Male		Female		Total		Male		Female		Total		
	#	%	#	%	#	%	#	%	#	%	#	%	
1. Alameda Sheriff's Dept.	3,128	91%	299	9%	3,427	75%	995	87%	152	13%	1,146	25%	4,573
2. Amador Sheriff's Dept.	18	81%	4	19%	22	44%	24	85%	4	15%	28	56%	50
3. Butte Sheriff's Dept.	221	83%	44	17%	265	63%	128	81%	30	19%	159	37%	424
4. Calaveras Sheriff's Dept.	16	86%	3	14%	18	43%	22	93%	2	7%	24	57%	43
5. Colusa Sheriff's Dept.	18	85%	3	15%	21	32%	40	89%	5	11%	44	68%	66
6. Contra Costa Sheriff's Dept.	796	86%	131	14%	927	62%	523	90%	55	10%	578	38%	1,505
7. Del Norte Sheriff's Dept.	58	87%	8	13%	67	62%	36	87%	6	13%	41	38%	108
8. El Dorado Sheriff's Dept.	117	87%	17	13%	134	45%	142	87%	22	13%	163	55%	298
9. Fresno Sheriff's Dept.	1,571	90%	183	10%	1,754	79%	430	90%	48	10%	478	21%	2,233
10. Glenn Sheriff's Dept.	44	59%	30	41%	74	81%	15	81%	3	19%	18	19%	92
11. Humboldt Sheriff's Dept.	195	88%	26	12%	221	69%	90	89%	11	11%	101	31%	322
12. Imperial Sheriff's Dept.	133	50%	133	50%	266	50%	133	50%	133	50%	266	50%	533
13. Inyo Sheriff's Dept.	26	91%	3	9%	28	42%	30	79%	8	21%	38	58%	66
14. Kern Sheriff's Dept.	1,159	89%	136	11%	1,296	66%	490	74%	175	26%	665	34%	1,961
15. Kings Sheriff's Dept.	100	89%	12	11%	112	32%	201	85%	34	15%	235	68%	348
16. Lake Sheriff's Dept.	98	93%	8	7%	105	51%	79	78%	22	22%	100	49%	206
17. Lassen Sheriff's Dept.	50	84%	10	16%	59	51%	43	76%	14	24%	57	49%	116
18. Los Angeles Sheriff's Dept.	10,127	89%	1,231	11%	11,358	58%	7,270	87%	1,122	13%	8,392	42%	19,750
19. Madera Corrections Dept.	137	89%	18	11%	154	51%	136	93%	10	7%	146	49%	300
20. Marin Sheriff's Dept.	213	83%	44	17%	258	86%	37	86%	6	14%	43	14%	301
21. Mariposa Sheriff's Dept.	25	93%	2	7%	27	64%	15	96%	1	4%	16	36%	43
22. Mendocino Sheriff's Dept.	106	87%	15	13%	121	54%	87	85%	15	15%	102	46%	223
23. Merced Sheriff's Dept.	325	90%	36	10%	361	64%	178	86%	28	14%	207	36%	568
24. Modoc Sheriff's Dept.	6	83%	1	17%	8	32%	14	88%	2	12%	16	68%	24
25. Mono Sheriff's Dept.	8	82%	2	18%	10	50%	9	89%	1	11%	10	50%	20
26. Monterey Sheriff's Dept.	586	92%	54	8%	641	65%	308	90%	34	10%	342	35%	983
27. Napa Corrections Dept.	106	87%	16	13%	122	60%	73	91%	7	9%	80	40%	202
28. Nevada Sheriff's Dept.	90	94%	5	6%	95	55%	66	84%	12	16%	78	45%	173
29. Orange Sheriff's Dept.	1,771	89%	213	11%	1,984	41%	2,441	86%	390	14%	2,830	59%	4,814
30. Placer Sheriff's Dept.	191	78%	55	22%	247	57%	155	83%	32	17%	187	43%	433
31. Plumas Sheriff's Dept.	24	87%	4	13%	28	61%	15	83%	3	17%	18	39%	46
32. Riverside Sheriff's Dept.	1,674	89%	217	11%	1,892	71%	650	85%	111	15%	761	29%	2,652
33. Sacramento Sheriff's Dept.	1,626	84%	308	16%	1,934	60%	1,103	87%	169	13%	1,272	40%	3,206
34. San Benito Sheriff's Dept.	55	93%	4	7%	59	58%	38	90%	4	10%	42	42%	101

AVERAGE DAILY POPULATION
NON-SENTENCED/SENTENCED MALE/FEMALE
CALIFORNIA COUNTY JAILS - FOR MONTHS OF OCTOBER - DECEMBER 1999

	Non-sentenced						Sentenced						Total #
	Male		Female		Total		Male		Female		Total		
	#	%	#	%	#	%	#	%	#	%	#	%	
35 San Bernardino Sheriffs Dept.	3,131	87%	488	13%	3,619	72%	1,135	81%	258	19%	1,393	28%	5,012
36 San Diego Probation Dept.	0	0%	0	0%	0	0%	212	100%	0	0%	212	100%	212
37 San Diego Sheriffs Dept.	2,240	85%	396	15%	2,637	56%	1,723	84%	333	16%	2,056	44%	4,693
38 San Diego Work/Furlough	4	100%	0	0%	4	2%	184	83%	38	17%	223	98%	226
39 San Francisco Sheriffs Dept.	1,409	89%	174	11%	1,584	75%	448	85%	77	15%	525	25%	2,108
40 San Joaquin Sheriffs Dept.	451	86%	73	14%	524	43%	588	84%	116	16%	704	57%	1,228
41 San Luis Obispo Sheriffs Dept.	128	89%	16	11%	144	40%	193	89%	25	11%	218	60%	362
42 San Mateo Sheriffs Dept.	489	92%	43	8%	532	47%	517	86%	86	14%	603	53%	1,135
43 Santa Ana Police Dept.	345	87%	53	13%	398	98%	8	100%	0	0%	8	2%	407
44 Santa Barbara Sheriffs Dept.	399	86%	64	14%	463	51%	393	89%	50	11%	443	49%	906
45 Santa Clara Dept. of Correction	2,266	91%	235	9%	2,501	58%	1,611	88%	220	12%	1,831	42%	4,332
46 Santa Clara Probation Dept.	0	0%	0	0%	0	0%	211	80%	52	20%	263	100%	263
47 Santa Cruz Sheriffs Dept.	198	88%	26	12%	224	39%	308	88%	40	12%	348	61%	572
48 Scapular House	0	0%	0	0%	0	0%	162	90%	19	10%	180	100%	180
49 Shasta Sheriffs Dept.	179	85%	32	15%	210	61%	109	80%	27	20%	136	39%	346
50 Sierra Sheriffs Dept.	2	83%	0	17%	2	50%	2	100%	0	0%	2	50%	4
51 Siskiyou Sheriffs Dept.	54	85%	9	15%	64	70%	23	85%	4	15%	27	30%	91
52 Solano Sheriffs Dept.	506	86%	83	14%	588	67%	258	89%	33	11%	291	33%	879
53 Sonoma Sheriffs Dept.	467	88%	67	12%	534	50%	472	88%	67	12%	539	50%	1,073
54 Stanislaus Sheriffs Dept.	460	89%	56	11%	517	52%	401	84%	76	16%	477	48%	994
55 Sutter Sheriffs Dept.	101	84%	20	16%	121	58%	71	80%	18	20%	88	42%	209
56 Tehama Sheriffs Dept.	110	92%	9	8%	119	60%	71	90%	8	10%	78	40%	197
57 Trinity Sheriffs Dept.	13	80%	3	20%	16	47%	15	80%	4	20%	18	53%	35
58 Tulare Sheriffs Dept.	559	89%	68	11%	627	58%	393	86%	63	14%	456	42%	1,083
59 Tuolumne Sheriffs Dept.	32	83%	7	17%	39	41%	47	85%	9	15%	56	59%	95
60 Ventura County Work Furlough	0	0%	0	0%	0	0%	112	82%	25	18%	136	100%	136
61 Ventura Sheriffs Dept.	598	88%	79	12%	677	51%	528	82%	115	18%	643	49%	1,320
62 Yolo Sheriffs Dept.	225	86%	37	14%	262	71%	93	86%	15	14%	108	29%	370
63 Yuba County Sheriffs Dept.	261	94%	16	6%	276	92%	23	91%	2	9%	25	8%	301
Statewide	39,446	88%	5,331	12%	44,777	59%	26,323	86%	4,448	14%	30,772	41%	75,548

** Jurisdictions which have not yet been updated for the month(s) in question
 Column totals may not add up to the grand total due to rounding

JAIL POPULATIONS: 4th QUARTER '98 VERSUS 4th QUARTER '99

Jurisdiction	1998 Qtr 4	1999 Qtr 4	Qtr 4, 99 minus Qtr 4, 98	Qtr 4, 98 to Qtr 4, 99 % +/-	% of Total Increase or Decrease	Cum %	Cum Total
Alameda Sheriff's Dept.	4,160	4,573	413	9.93%	33.80%	33.80%	413
San Bernardino Sheriffs Dept.	4,879	5,012	133	2.73%	10.88%	44.68%	546
Solano Sheriff's Dept.	787	879	92	11.69%	7.53%	52.21%	638
Scapular House	112	180	68	60.71%	5.56%	57.77%	706
Yuba County Sheriff's Dept.	235	301	66	28.09%	5.40%	63.18%	772
Nevada Sheriff's Dept.	113	173	60	53.10%	4.91%	68.09%	832
Marin Sheriff's Dept.	244	301	57	23.36%	4.66%	72.75%	889
Merced Sheriff's Dept.	511	568	57	11.15%	4.66%	77.41%	946
Kings Sheriff's Dept.	309	348	39	12.62%	3.19%	80.61%	985
Madera Corrections Dept.	263	300	37	14.07%	3.03%	83.63%	1,022
Butte Sheriff's Dept.	390	424	34	8.72%	2.78%	86.42%	1,056
San Joaquin Sheriff's Dept.	1,207	1,228	21	1.74%	1.72%	88.13%	1,077
Shasta Sheriff's Dept.	325	346	21	6.46%	1.72%	89.85%	1,098
Lake Sheriff's Dept.	186	206	20	10.75%	1.64%	91.49%	1,118
Sacramento Sheriff's Dept.	3,192	3,206	14	0.44%	1.15%	92.64%	1,132
Siskiyou Sheriff's Dept.	77	91	14	18.18%	1.15%	93.78%	1,146
Del Norte Sheriff's Dept.	97	108	11	11.34%	0.90%	94.68%	1,157
Amador Sheriff's Dept.	40	50	10	25.00%	0.82%	95.50%	1,167
Glenn Sheriff's Dept.	85	92	7	8.24%	0.57%	96.07%	1,174
Santa Ana Police Dept.	400	407	7	1.75%	0.57%	96.64%	1,181
Riverside Sheriff's Dept.	2,646	2,652	6	0.23%	0.49%	97.14%	1,187
Inyo Sheriff's Dept.	61	66	5	8.20%	0.41%	97.55%	1,192
Placer Sheriff's Dept.	428	433	5	1.17%	0.41%	97.95%	1,197
Tehama Sheriff's Dept.	192	197	5	2.60%	0.41%	98.36%	1,202
Mariposa Sheriff's Dept.	39	43	4	10.26%	0.33%	98.69%	1,206
Ventura County Work Furlough	132	136	4	3.03%	0.33%	99.02%	1,210
Mendocino Sheriff's Dept.	220	223	3	1.36%	0.25%	99.26%	1,213
San Benito Sheriff's Dept.	99	101	2	2.02%	0.16%	99.43%	1,215
San Luis Obispo Sheriff's Dept.	360	362	2	0.56%	0.16%	99.59%	1,217
Sierra Sheriff's Dept.	2	4	2	100.00%	0.16%	99.75%	1,219
Humboldt Sheriff's Dept.	321	322	1	0.31%	0.08%	99.84%	1,220
Napa Corrections Dept.	201	202	1	0.50%	0.08%	99.92%	1,221
Sonoma Sheriff's Dept.	1,072	1,073	1	0.09%	0.08%	100.00%	1,222
Calaveras Sheriff's Dept.	43	43	-	0.00%	0.00%	100.00%	1,222
Fresno Sheriff's Dept.	2,236	2,233	(3)	-0.13%	0.11%	0.11%	(3)
Mono Sheriff's Dept.	24	20	(4)	-16.67%	0.15%	0.27%	(7)
Colusa Sheriff's Dept.	74	66	(8)	-10.81%	0.31%	0.57%	(15)
Lassen Sheriff's Dept.	124	116	(8)	-6.45%	0.31%	0.88%	(23)
San Diego Work Furlough	234	226	(8)	-3.42%	0.31%	1.19%	(31)
Plumas Sheriff's Dept.	55	46	(9)	-16.36%	0.34%	1.53%	(40)
San Francisco Sheriff's Dept.	2,118	2,108	(10)	-0.47%	0.38%	1.91%	(50)
Yolo Sheriff's Dept.	380	370	(10)	-2.63%	0.38%	2.29%	(60)
Modoc Sheriff's Dept.	35	24	(11)	-31.43%	0.42%	2.72%	(71)
Santa Clara Probation Dept.	274	263	(11)	-4.01%	0.42%	3.14%	(82)
Trinity Sheriff's Dept.	49	35	(14)	-28.57%	0.54%	3.67%	(96)
Tuolumne Sheriff's Dept.	109	95	(14)	-12.84%	0.54%	4.21%	(110)
Santa Barbara Sheriff's Dept.	921	906	(15)	-1.63%	0.57%	4.78%	(125)
El Dorado Sheriff's Dept.	320	298	(22)	-6.88%	0.84%	5.62%	(147)
Imperial Sheriff's Dept.	555	533	(22)	-3.96%	0.84%	6.46%	(169)
Sutter Sheriff's Dept.	231	209	(22)	-9.52%	0.84%	7.30%	(191)
Monterey Sheriff's Dept.	1,010	983	(27)	-2.67%	1.03%	8.34%	(218)
Tulare Sheriff's Dept.	1,130	1,083	(47)	-4.16%	1.80%	10.13%	(265)
Santa Cruz Sheriff's Dept.	623	572	(51)	-8.19%	1.95%	12.08%	(316)
Stanislaus Sheriff's Dept.	1,052	994	(58)	-5.51%	2.22%	14.30%	(374)
Ventura Sheriff's Dept.	1,382	1,320	(62)	-4.49%	2.37%	16.67%	(436)
Contra Costa Sheriff's Dept.	1,574	1,505	(69)	-4.38%	2.64%	19.31%	(505)
Kern Sheriff's Dept.	2,036	1,961	(75)	-3.68%	2.87%	22.18%	(580)
San Diego Probation Dept.	297	212	(85)	-28.62%	3.25%	25.43%	(665)
Santa Clara Dept. of Correction	4,437	4,332	(105)	-2.37%	4.02%	29.45%	(770)
San Mateo Sheriff's Dept.	1,242	1,135	(107)	-8.62%	4.09%	33.54%	(877)
Orange Sheriff's Dept.	5,103	4,814	(289)	-5.66%	11.05%	44.59%	(1,166)
San Diego Sheriff's Dept.	5,151	4,693	(458)	-8.89%	17.51%	62.10%	(1,624)
Los Angeles Sheriff's Dept.	20,741	19,750	(991)	-4.78%	37.90%	100.00%	(2,615)
	76,945	75,552	(1,393)				
Total increase			1,222				
Total decrease			(2,615)				

Note: Totals subject to slight variations due to rounding

Interpretation of Table:
JAIL POPULATIONS: 4th Quarter '98 versus 4th Quarter '99

This table:

- summarizes the ADP results for the 63 jurisdictions in California reporting data from Type II, III, and IV jails;
- summarizes jurisdiction ADP results for the most recent quarter (Column B);
- compares jurisdiction ADP for the most recent quarter with the same quarter last year (Column A);
- ranks the jurisdictions in terms of gains or losses in ADP from high to low (Column C);
- lists the percentage growth or decline in ADP for each jurisdiction (Column D);
- lists the percentage of the overall State increase or decrease in ADP that is represented by each jurisdiction (Column E);
- lists, by jurisdiction, the cumulative percentage increase and decrease in the State ADP starting with the jurisdiction with the highest percentage of the increase and proceeding to the jurisdiction with the highest percentage of the decrease (Column F);
- lists, by jurisdiction, the cumulative total increase and decrease in the State ADP starting with the jurisdiction with the highest increase and proceeding to the jurisdiction with the biggest decrease (Column G); and,
- lists the jurisdictions that experienced decreases in their ADP as shaded.

Some important conclusions from this table are:

1. The two numbers at the bottom indicate the "total increase" in ADP (in this case - 1,222) and "total decrease" in ADP (2,615). In other words, the jurisdictions experiencing increases had a total increase of 1,222 ADP; and the jurisdictions experiencing decreases had a total decrease of 2,615 ADP. Subtracting 1,222 from 2,615 produces the overall decrease of 1,393 between the fourth quarter of 1998 and the fourth quarter of 1999.
2. The Alameda ADP increase of 413 is 33.8% of the total increase of 1,222. Thirty-four jurisdictions had increases (down to Calaveras Sheriff's Department). When you get to Calaveras Sheriff's Department, you have accounted for 100% of the increases (100% of the cumulative total of 1,222).
3. Jurisdictions that experienced a decrease in ADP are listed from smallest decrease to largest decrease (Fresno Sheriff's Department to Los Angeles Sheriff's Department). When you get to the bottom of the table, you have accounted for 100% of the total decreases of 2,615 inmates.
4. The cumulative percentage of ADP increase for the top four jurisdictions (Alameda Sheriff's Department to Scapular House) is 57.77%. In other words, four jurisdictions accounted for about 58% of the total ADP increase. Three counties (Orange, San Diego, and Los Angeles) account for about 66% of the decreases.

BOARD OF CORRECTIONS JAIL PROFILE SURVEY

Reporting Period: July to September, 1999

County Jail Populations

ADP ^a	76,935 ^b
Holding Areas	930
Average "Under the Roof" ^c	77,865 ^d
Highest One Day Count	80,845 ^e

Special Use Beds

Medical Beds	0
Mental Health Beds	0

County Jail Populations

Felony	55,379
Misdemeanor	21,556
Total	76,935
Non-Sentenced Males	39,735
Non-Sentenced Females	5,313
Sentenced Males	27,156
Sentenced Females	4,731
Total	76,935
Maximum Security Inmates	34,277
Medium Security Inmates	20,842
Minimum Security Inmates	21,816
Total	76,935

Released Per Month Due to Lack of Space

Pretrial Release	5,000 ^f
Early Release	11,509 ^f
Total	16,509

Inmates with 2 and 3 Strikes

2 Strike Inmates	3,150 ^g
3 Strike Inmates	2,121 ^g
Total	5,271

Unservd Warrants

Felony Warrants	266,725 ^g
Misdemeanor Warrants	2,274,879 ^g
Total	2,541,604

Inmates From Other Jurisdictions

Housed on Federal Contract	3,914
Housed on Contract with CDC	2,028
From Other Counties on Contract	6
Awaiting Transport	1,208
Total	7,156

Other Jail Profile Survey Variables

Bookings Per Month	100,380 ^f
Juveniles in Custody	111 ^f
Criminal / Illegal Aliens	9,322
Assaults On Staff	254

- a. The Average Daily Population for all jurisdictions (excluding Type I's) does not include inmates in holding areas.
- b. Unless otherwise indicated, the numbers reported are the average across the days in the quarter.
- c. "Under the Roof" is the sum of the Average Daily Population plus the average daily number of inmates in Holding Areas.
- d. Totals may not be the exact sum of the subtotals due to rounding.
- e. The sum of all Highest One Day inmate population counts from all jurisdictions.
- f. These data are collected on a monthly basis, this figure is an average of the total numbers collected each month during this quarter.
- g. These data are one-day snapshots collected at the end of the quarter.



BOARD OF CORRECTIONS 600 BERKUT DRIVE, SACRAMENTO, CA 95814 916/445-5073 www.bdcorr.ca.gov

STATE OF CALIFORNIA
GRAY DAVIS, GOVERNOR