

# JAIL PROFILE SURVEY

## 1998, 4th QUARTER SURVEY RESULTS

FACILITIES STANDARDS AND OPERATIONS DIVISION

**BOARD OF CORRECTIONS**

STATE OF CALIFORNIA  
600 Bercut Drive  
Sacramento, CA 95814-0185  
(916) 445-5073

# JAIL PROFILE SURVEY

## EXPLANATION OF RESULTS

The following pages contain the Jail Profile Survey results for the fourth quarter of 1998. Page 1 contains the quarterly totals based upon the monthly and quarterly data submitted to us by the participating jurisdictions. Pages 2 and 3 show the trend data for variables we have been tracking for the last ten years. The remainder of this page provides explanations and clarifications of the data presented.

### Page 1

- Unless otherwise noted, "projected totals" are based upon the average per day for the variable in question. For example, there were an average of 76,948 inmates per day in local jails (excluding Type I's) during the three month span of October to December 1998.
- For some variables, we did not receive data from all jurisdictions. We compute the percentage of the ADP which were housed in the jurisdictions that did supply us with data. For example, 95.95% of the jurisdictions indicated the number of felony inmates in their facilities. In these cases, we projected what the statewide number of felony inmates would have been if we had complete data from all the participating jurisdictions.
- The number for "Bookings" is the average of the monthly totals for October, November and December.
- For the following variables, the numbers presented are the totals as of the mid-quarter (i.e., November 15, 1998): Pretrial Release, Early Release, 2 and 3 Strikes, Felony Warrants, Misdemeanor Warrants, Juveniles in Custody and Undocumented Aliens.
- Assaults is the total number of serious inmate assaults on staff (resulting in a crime report), statewide, during the fourth quarter of 1998.

### Pages 2 and 3

- The data in the 10-Year Summary tables are based upon survey data which the Board has gathered since the early 1980's.
- Prior to 1995, yearly averages were reported to the Board on an annual basis. Yearly averages from 1996 on have been the average across the 12 calendar months. In 1995, the yearly figure reported is the fourth quarter average, since we do not have data from the first three quarters.

# JAIL PROFILE SURVEY

## CALIFORNIA COUNTY JAILS - FOR MONTHS OF OCTOBER - DECEMBER 1998

### Projected Total

#### Average Daily Population (ADP)

Highest One Day Count <sup>a</sup>	81,366 <sup>b</sup>
ADP	76,948 <sup>c</sup>
Holding Areas	883
Average "Under the Roof" <sup>d</sup>	77,831 <sup>e</sup>

### Projected Total

#### Inmates from Other Jurisdictions

Inmates Housed on Federal Contract	3,743
Inmates Housed on Contract with CDC	1,907
Inmates from Other Counties on Contract	16
Inmates Awaiting Transport	1,336
<b>Total</b>	<b>7,001</b>

#### Categories of Inmates

Felony	55,184
Misdemeanor	21,386
Unspecified	378
<b>Total</b>	<b>76,948</b>
Non-Sentenced Males	39,128
Non-Sentenced Females	5,158
Sentenced Males	27,785
Sentenced Females	4,877
<b>Total</b>	<b>76,948</b>
Maximum Security Inmates	34,506
Medium Security Inmates	20,279
Minimum Security Inmates	22,196
Unspecified	(33) <sup>f</sup>
<b>Total</b>	<b>76,948</b>

#### Special Use Beds

Medical Beds	962
Mental Beds	2,477

<sup>a</sup> The highest one day inmate population counts in the 63 jurisdictions.

<sup>b</sup> Unless otherwise indicated, the numbers reported in this table are an average across the days covered by the report.

<sup>c</sup> The Average Daily Population in all jurisdictions is for the days covered by the report.

<sup>d</sup> The term "Under the Roof" is the sum of the Average Daily Population plus the inmates in Holding Areas.

#### Number of People Released Per Month Due to Lack of Space

Pretrial Release	5,937
Early Release	11,826
<b>Total</b>	<b>17,763<sup>e</sup></b>

#### Inmates with 2 and 3 Strikes

2 Strike Inmates	3,319 <sup>f</sup>
3 Strike Inmates	2,200 <sup>f</sup>
<b>Total</b>	<b>5,519<sup>e</sup></b>

#### Unservd Warrants

Felony Warrants	252,933 <sup>f</sup>
Misdemeanor Warrants	2,342,401 <sup>f</sup>
<b>Total</b>	<b>2,595,335</b>

#### Other Jail Profile Survey Variables

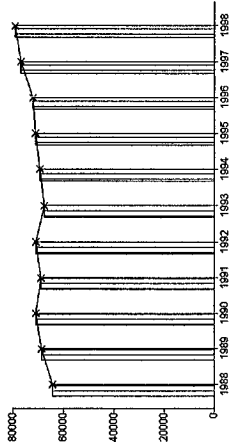
Bookings per Month	95,070 <sup>f</sup>
Juveniles in Custody	98 <sup>f</sup>
Undocumented Aliens	8,480 <sup>f</sup>
Assaults	262 <sup>f</sup>

<sup>e</sup> Grand totals may not add up exactly to the column totals due to rounding.

<sup>f</sup> This number is the average for the quarters represented by the span of time covered by this report.

**Average Daily Population**

10 Year Summary										
	1989	1990	1991	1992	1993	1994	1995	1996	1997	
1988	64,335	68,535	70,845	68,923	70,853	67,576	69,233	71,107	72,029	76,906



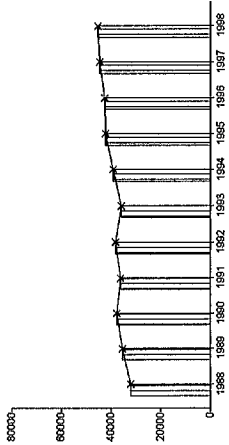
The ADP for the year 1998 was about 3% higher than the 1997 ADP. This increase was a result of significant increases in the first two quarters of 1998, with the second quarter ADP reaching 80,000 inmates for the first time in California's history. The ADP decreased in the last two quarters of 1998 (the first decreases in the 12-quarter history of the Jail Profile Survey). In the fourth quarter of 1998, the ADP decreased by 2,691 inmates. The ADP will probably stay in the range of 75,000 to 80,000 inmates given the total number of existing beds that meet the Board of Corrections standards (approximately 71,000).

**Quarterly Results**

	Q1	Q2	Q3	Q4	Average
1997	75,684	76,778	77,529	77,633	76,906
1998	79,620	80,391	79,639	76,948	79,149

**Non-Sentenced ADP**

10 Year Summary									
	1989	1990	1991	1992	1993	1994	1995	1996	1997
1988	31,959	35,264	36,064	38,110	35,899	39,122	42,237	42,541	44,590



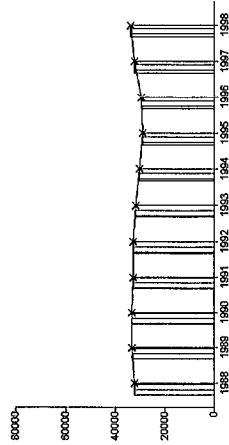
The ADP for the fourth quarter of 1998 is 685 inmates lower than the ADP for the fourth quarter of 1997 (76,948 versus 77,633 inmates). The entire decrease came in the non-sentenced area (742 fewer inmates). Care must be taken to not "over-interpret" the quarterly variations in the non-sentenced ADP since the number of inmates in this category for the first quarter of 1997, and the last quarter of 1998, is virtually the same.

**Quarterly Results**

	Q1	Q2	Q3	Q4	Average
1997	44,257	44,072	45,003	45,028	44,590
1998	45,283	45,575	46,069	44,286	45,303

**Sentenced ADP**

10 Year Summary									
	1989	1990	1991	1992	1993	1994	1995	1996	1997
1988	32,376	33,271	33,215	32,743	31,677	30,142	28,870	29,488	32,316



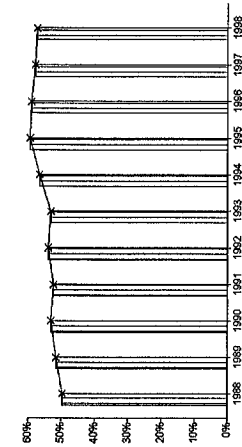
The ADP for the fourth quarter of 1998 is about the same as for the fourth quarter of 1997 (an increase of only 56 inmates). The number of sentenced inmates has been fairly stable over the last two calendar years. The Jail Profile Survey results for this category are consistent with the idea that we have reached a jail-inmate population ceiling.

**Quarterly Results**

	Q1	Q2	Q3	Q4	Average
1997	31,426	32,705	32,526	32,606	32,316
1998	34,337	34,816	33,570	32,662	33,846

Percentage Non-Sentenced

10 Year Summary									
1988	1989	1990	1991	1992	1993	1994	1995	1996	1997
50%	51%	53%	52%	54%	53%	57%	59%	59%	58%



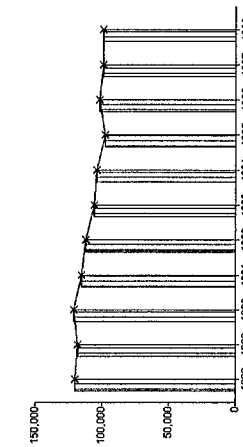
Since the beginning of the Jail Profile Survey, the percentage of non-sentenced inmates has never been higher than 60% and never lower than 57%. The percentage for the final quarter of 1998 is 58%. The overall percentage for 1998 (57%) is the same as it was in 1994. We do not expect any significant change in this percentage in the near future.

Quarterly Results

	Q1	Q2	Q3	Q4	Average
1997	58	57	58	58	58
1998	57	57	58	58	57

Average Number of Persons Booked Per Month

10 Year Summary									
1988	1989	1990	1991	1992	1993	1994	1995	1996	1997
119,838	118,253	120,716	115,313	112,009	105,593	103,996	97,589	101,939	99,180



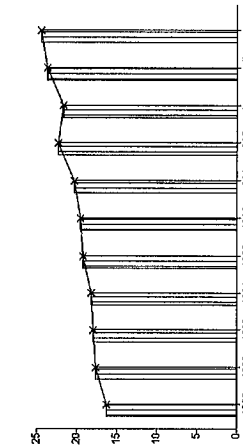
The average number of persons booked per month did not change much between 1997 and 1998 (99,180 and 98,915 respectively). The number booked per month declined rapidly between 1990 and 1996 (a decline of about 19,000 per month from 120,716 to 101,939). Since then, there has been only a slight additional decline to 98,915. Nevertheless, the overall downward trend in bookings since 1990 continues.

Quarterly Results

	Q1	Q2	Q3	Q4	Average
1997	98,505	99,686	105,096	93,434	99,180
1998	97,687	100,754	102,148	95,070	98,915

Average Length of Stay

10 Year Summary									
1988	1989	1990	1991	1992	1993	1994	1995	1996	1997
16.3	17.6	17.9	18.2	19.2	19.5	20.3	22.3	21.6	23.7



The Average Length of Stay increased again this year (from 23.7 days in 1997 to 24.4 days in 1998). Although this might seem like a small increase, each one-day increase in the housing of 78,000 inmates (the Average Daily Population) represents a significant increase in resources and costs.

Quarterly Results

	Q1	Q2	Q3	Q4	Average
1997	23.1	23.4	22.6	25.5	23.7
1998	24.7	24.2	24.0	24.8	24.4

**AVERAGE DAILY POPULATION  
NON-SENTENCED/SENTENCED MALE/FEMALE  
CALIFORNIA COUNTY JAILS - FOR MONTHS OF OCTOBER - DECEMBER 1998**

Jurisdiction	Non-sentenced			Sentenced			Total
	Male	Female	Total	Male	Female	Total	
	#	#	#	#	#	#	
1. Alameda Sheriff's Dept.	2,761	245	3,006	949	205	1,154	4,160
2. Amador Sheriff's Dept.	19	3	22	14	4	18	40
3. Butte Sheriff's Dept.	207	40	247	127	17	144	390
4. Calaveras Sheriff's Dept.	15	2	17	21	4	26	43
5. Colusa Sheriff's Dept.	36	3	40	30	4	34	74
6. Contra Costa Sheriff's Dept.	844	129	974	544	56	601	1,574
7. Del Norte Sheriff's Dept.	46	4	49	42	6	48	97
8. El Dorado Sheriff's Dept.	111	14	125	174	21	195	320
9. Fresno Sheriff's Dept.	1,554	141	1,695	447	94	541	2,236
10. Glenn Sheriff's Dept.	49	4	53	25	7	32	85
11. Humboldt Sheriff's Dept.	265	38	304	14	3	17	321
12. Imperial Sheriff's Dept.	139	139	278	139	139	278	555
13. Inyo Sheriff's Dept.	18	3	21	32	9	41	61
14. Kern Sheriff's Dept.	966	177	1,143	752	142	893	2,036
15. Kings Sheriff's Dept.**	66	9	75	194	40	234	309
16. Lake Sheriff's Dept.**	76	8	84	81	22	103	186
17. Lassen Sheriff's Dept.**	53	13	66	44	14	58	124
18. Los Angeles Sheriff's Dept.**	10,528	1,195	11,722	7,769	1,250	9,019	20,741
19. Madera Corrections Dept.**	108	16	124	126	12	139	263
20. Marin Sheriff's Dept.**	170	26	197	39	9	48	244
21. Mariposa Sheriff's Dept.**	17	2	19	17	3	19	39
22. Mendocino Sheriff's Dept.	114	13	127	81	12	93	220
23. Merced Sheriff's Dept.**	273	30	303	188	20	208	511
24. Modoc Sheriff's Dept.	10	1	11	21	3	24	35
25. Mono Sheriff's Dept.	8	0	8	14	2	16	24
26. Monterey Sheriff's Dept.	567	64	631	330	49	379	1,010
27. Napa Corrections Dept.**	119	12	132	61	8	70	201
28. Nevada Sheriff's Dept.	66	11	77	28	8	36	113
29. Orange Sheriff's Dept.	1,931	216	2,147	2,493	463	2,956	5,103
30. Placer Sheriff's Dept.	201	22	224	170	35	205	428
31. Plumas Sheriff's Dept.	19	2	21	30	4	34	55
32. Riverside Sheriff's Dept.	1,676	204	1,880	659	107	766	2,646
33. Sacramento Sheriff's Dept.**	1,477	270	1,747	1,202	244	1,445	3,192
34. San Benito Sheriff's Dept.	45	3	48	47	4	51	99

**AVERAGE DAILY POPULATION  
NON-SENTENCED/SENTENCED MALE/FEMALE  
CALIFORNIA COUNTY JAILS - FOR MONTHS OF OCTOBER - DECEMBER 1998**

Jurisdiction	Non-sentenced				Sentenced				Total		
	Male		Female		Male		Female				
	#	%	#	%	#	%	#	%			
35. San Bernardino Sheriffs Dept.	3,081	88%	440	12%	1,116	82%	242	18%	1,358	28%	4,879
36. San Diego Probation Dept.	0	0%	0	0%	297	100%	0	0%	297	100%	297
37. San Diego Sheriffs Dept.**	2,552	86%	406	14%	1,859	85%	334	15%	2,192	43%	5,151
38. San Diego WorkFurlough**	2	57%	1	43%	183	79%	48	21%	231	99%	234
39. San Francisco Sheriffs Dept.	1,370	89%	165	11%	497	85%	86	15%	583	28%	2,118
40. San Joaquin Sheriffs Dept.**	456	87%	67	13%	570	83%	115	17%	685	57%	1,207
41. San Luis Obispo Sheriffs Dept.**	113	88%	15	12%	205	88%	27	12%	233	65%	360
42. San Mateo Sheriffs Dept.**	495	76%	157	24%	493	84%	97	16%	590	48%	1,242
43. Santa Ana Police Dept.**	337	86%	53	14%	10	100%	0	0%	10	2%	400
44. Santa Barbara Sheriffs Dept.**	373	85%	68	15%	431	90%	50	10%	481	52%	921
45. Santa Clara Dept. of Correction**	2,342	90%	259	10%	1,586	86%	250	14%	1,836	41%	4,437
46. Santa Clara Probation Dept.**	0	0%	0	0%	226	83%	47	17%	274	100%	274
47. Santa Cruz Sheriffs Dept.	213	90%	24	10%	344	89%	43	11%	386	62%	623
48. Scapular House**	0	0%	0	0%	95	85%	16	15%	112	100%	112
49. Shasta Sheriffs Dept.**	177	89%	21	11%	105	83%	22	17%	127	39%	325
50. Sierra Sheriffs Dept.**	1	86%	0	14%	1	100%	0	0%	1	61%	2
51. Siskiyou Sheriffs Dept.	38	82%	8	18%	27	89%	3	11%	30	39%	77
52. Solano Sheriffs Dept.	407	87%	59	13%	288	90%	33	10%	321	41%	787
53. Sonoma Sheriffs Dept.	482	87%	69	13%	447	86%	74	14%	521	49%	1,072
54. Stanislaus Sheriffs Dept.	456	89%	60	12%	452	84%	85	16%	537	51%	1,052
55. Sutter Sheriffs Dept.**	112	85%	20	15%	75	75%	24	25%	99	43%	231
56. Tehama Sheriffs Dept.	0	0%	0	0%	170	89%	22	11%	192	100%	192
57. Trinity Sheriffs Dept.**	21	85%	4	15%	22	92%	2	8%	24	49%	49
58. Tulare Sheriffs Dept.	490	89%	60	11%	497	86%	84	14%	581	51%	1,130
59. Tuolumne Sheriffs Dept.**	38	80%	9	20%	53	85%	9	15%	62	57%	109
60. Ventura County Work Furlough	0	0%	0	0%	106	80%	26	20%	132	100%	132
61. Ventura Sheriffs Dept.	618	90%	71	10%	599	86%	94	14%	693	50%	1,382
62. Yolo Sheriffs Dept.	247	86%	41	14%	74	81%	18	19%	92	24%	380
63. Yuba County Sheriffs Dept.	155	89%	19	11%	54	89%	7	11%	61	26%	235
<b>Statewide</b>	<b>39,128</b>	<b>88%</b>	<b>5,158</b>	<b>12%</b>	<b>27,785</b>	<b>85%</b>	<b>4,877</b>	<b>15%</b>	<b>32,662</b>	<b>42%</b>	<b>76,948</b>

\*\* Jurisdictions which have not yet been updated for the month(s) in question  
Column totals may not add up to the grand total due to rounding

	1997 Qtr 4	1998 Qtr 4	Qtr 4, 98 minus Qtr 4, 97	Qtr 4, 97 to Qtr 4, 98 % +/-	% of Total Increase or Decrease	Cum %	Cum Total
Jurisdiction	Column A	Column B	Column C	Column D	Column E	Column F	Column G
San Francisco Sheriff's Dept.	1,823	2,118	295	16.2%	21.4%	21.39%	295
San Mateo Sheriff's Dept.	1,045	1,242	197	18.9%	14.3%	35.68%	492
Santa Clara Probation Dept.	100	274	174	174.0%	12.6%	48.30%	666
Sonoma Sheriff's Dept.	972	1,072	100	10.3%	7.3%	55.55%	766
Fresno Sheriff's Dept.	2,137	2,236	99	4.6%	7.2%	62.73%	865
Ventura Sheriff's Dept.	1,304	1,382	78	6.0%	5.7%	68.38%	943
Humboldt Sheriff's Dept.	263	321	58	22.1%	4.2%	72.59%	1,001
Imperial Sheriff's Dept.	500	555	55	11.0%	4.0%	76.58%	1,056
Alameda Sheriff's Dept.	4,115	4,160	45	1.1%	3.3%	79.84%	1,101
Inyo Sheriff's Dept.	90	124	34	37.8%	2.5%	82.31%	1,135
Kings Sheriff's Dept.	2,003	2,036	33	1.6%	2.4%	84.70%	1,168
San Bernardino Sheriffs Dept.	4,846	4,879	33	0.7%	2.4%	87.09%	1,201
San Diego Work/Furlough	205	234	29	14.1%	2.1%	89.20%	1,230
Los Angeles Sheriff's Dept.	20,714	20,741	27	0.1%	2.0%	91.15%	1,257
Yolo Sheriff's Dept.	353	380	27	7.6%	2.0%	93.11%	1,284
Santa Ana Police Dept.	375	400	25	6.7%	1.8%	94.92%	1,309
Glenn Sheriff's Dept.	66	85	19	28.8%	1.4%	96.30%	1,328
Plumas Sheriff's Dept.	42	55	13	31.0%	0.9%	97.24%	1,341
Santa Cruz Sheriff's Dept.	612	623	11	1.8%	0.8%	98.04%	1,352
Lassen Sheriff's Dept.	178	186	8	4.5%	0.6%	98.62%	1,360
El Dorado Sheriff's Dept.	314	320	6	1.9%	0.4%	99.06%	1,366
Sutter Sheriff's Dept.	226	231	5	2.2%	0.4%	99.42%	1,371
San Benito Sheriff's Dept.	96	99	3	3.1%	0.2%	99.64%	1,374
Colusa Sheriff's Dept.	72	74	2	2.8%	0.1%	99.78%	1,376
Sierra Sheriffs Dept.	-	2	2	-	0.1%	99.93%	1,378
Trinity Sheriff's Dept.	48	49	1	2.1%	0.1%	100.00%	1,379
Mendocino Sheriff's Dept.	221	220	(1)	-0.5%	0.0%	0.05%	(1)
Kern Sheriff's Dept.	65	61	(4)	-6.2%	0.2%	0.24%	(5)
Napa Corrections Dept.	205	201	(4)	-2.0%	0.2%	0.43%	(9)
Tuolumne Sheriff's Dept.	114	109	(5)	-4.4%	0.2%	0.68%	(14)
Butte Sheriff's Dept.	397	390	(7)	-1.8%	0.2%	1.01%	(21)
Calaveras Sheriff's Dept.	51	43	(8)	-15.7%	0.4%	1.40%	(29)
Merced Sheriff's Dept.	519	511	(8)	-1.5%	0.4%	1.79%	(37)
Modoc Sheriff's Dept.	44	35	(9)	-20.5%	0.4%	2.22%	(46)
Siskiyou Sheriff's Dept.	86	77	(9)	-10.5%	0.4%	2.66%	(55)
Mariposa Sheriff's Dept.	49	39	(10)	-20.4%	0.5%	3.14%	(65)
Mono Sheriff's Dept.	35	24	(11)	-31.4%	0.5%	3.67%	(76)
Placer Sheriff's Dept.	440	428	(12)	-2.7%	0.6%	4.25%	(88)
Lake Sheriff's Dept.	322	309	(13)	-4.0%	0.6%	4.88%	(101)
Stanislaus Sheriff's Dept.	1,066	1,052	(14)	-1.3%	0.7%	5.56%	(115)
Del Norte Sheriff's Dept.	112	97	(15)	-13.4%	0.7%	6.28%	(130)
Tehama Sheriff's Dept.	207	192	(15)	-7.2%	0.7%	7.01%	(145)
Amador Sheriff's Dept.	56	40	(16)	-28.6%	0.8%	7.78%	(161)
Riverside Sheriff's Dept.	2,663	2,646	(17)	-0.6%	0.8%	8.60%	(178)
San Joaquin Sheriff's Dept.	1,228	1,207	(21)	-1.7%	1.0%	9.62%	(199)
Nevada Sheriff's Dept.	135	113	(22)	-16.3%	1.1%	10.68%	(221)
San Luis Obispo Sheriff's Dept.	383	360	(23)	-6.0%	1.1%	11.79%	(244)
Shasta Sheriff's Dept.	352	325	(27)	-7.7%	1.3%	13.10%	(271)
Marin Sheriff's Dept.	276	244	(32)	-11.6%	1.5%	14.64%	(303)
Contra Costa Sheriff's Dept.	1,607	1,574	(33)	-2.1%	1.6%	16.24%	(336)
San Diego Probation Dept.	342	297	(45)	-13.2%	2.2%	18.41%	(381)
Ventura County Work/Furlough	191	132	(59)	-30.9%	2.9%	21.27%	(440)
Santa Barbara Sheriff's Dept.	989	921	(68)	-6.9%	3.3%	24.35%	(508)
Orange Sheriff's Dept.	5,178	5,103	(75)	-1.4%	3.6%	28.18%	(583)
Madera Corrections Dept.	355	263	(92)	-25.9%	4.4%	32.62%	(675)
Scapular House	205	112	(93)	-45.4%	4.5%	37.12%	(768)
Monterey Sheriff's Dept.	1,108	1,010	(98)	-8.8%	4.7%	41.86%	(866)
Solano Sheriff's Dept.	886	787	(99)	-11.2%	4.8%	46.64%	(965)
Yuba County Sheriff's Dept.	362	235	(127)	-35.1%	6.1%	52.78%	(1,092)
Tulare Sheriff's Dept.	1,295	1,130	(165)	-12.7%	8.0%	60.75%	(1,257)
Sacramento Sheriff's Dept.	3,400	3,192	(208)	-6.1%	10.1%	70.81%	(1,465)
San Diego Sheriff's Dept.	5,404	5,151	(253)	-4.7%	12.2%	83.04%	(1,718)
Santa Clara Dept. of Correction	4,788	4,437	(351)	-7.3%	17.0%	100.00%	(2,069)
	77,635	76,945	(690)	-0.9%			

Total increase 1,379  
Total decrease (2,069)

Note: Totals subject to slight variations due to rounding



**Interpretation of Table:**  
**JAIL POPULATIONS: 4th Quarter '97 versus 4th Quarter '98**

This table:

- summarizes the ADP results for the 63 jurisdictions in California reporting data from Type II, III, and IV jails;
- summarizes jurisdiction ADP results for the most recent quarter (Column B);
- compares jurisdiction ADP for the most recent quarter with the same quarter last year (Column A);
- ranks the jurisdictions in terms of gains or losses in ADP from high to low (Column C);
- lists the percentage growth or decline in ADP for each jurisdiction (Column D);
- lists the percentage of the overall State increase or decrease in ADP that is represented by each jurisdiction (Column E);
- lists, by jurisdiction, the cumulative percentage increase and decrease in the State ADP starting with the jurisdiction with the highest percentage of the increase and proceeding to the jurisdiction with the highest percentage of the decrease (Column F);
- lists, by jurisdiction, the cumulative total increase and decrease in the State ADP starting with the jurisdiction with the highest increase and proceeding to the jurisdiction with the biggest decrease (Column G); and
- lists the jurisdictions that experienced decreases in their ADP as shaded.

Some important conclusions from this table are:

1. The two numbers at the bottom indicate the "total increase" in ADP (in this case 1,379) and "total decrease" in ADP (2069). In other words, the jurisdictions experiencing increases had a total increase of 1,379 ADP; and the jurisdictions experiencing decreases had a total decrease of 2,069 ADP. Subtracting 2,069 from 1,379 produces the overall decrease of 690 between the fourth quarter of 1997 and the fourth quarter of 1998.
2. The San Francisco ADP increase of 295 is 21.4% of the total increase of 1,379. Twenty-six jurisdictions had increases (down to Trinity Sheriff's Department). When you get to Trinity Sheriff's Department, you have accounted for 100% of the increases (100% of the cumulative total of 1,379).
3. Jurisdictions that experienced a decrease in ADP are listed from smallest decrease to largest decrease (Mendocino Sheriff's Department to Santa Clara Department of Corrections). When you get to the bottom of the table, you have accounted for 100% of the total decreases of 2,069 inmates.
4. The cumulative percentage of ADP increase for the top five jurisdictions (San Francisco Sheriff's Department to Fresno Sheriff's Department) is 62.7%. In other words, five jurisdictions accounted for almost 63% of the ADP increase.
5. In the last 12 months the ADP has decreased by 0.9%.

# BOARD OF CORRECTIONS JAIL PROFILE SURVEY

**Reporting Period: July to September, 1998**

### County Jail Populations

ADP <sup>a</sup>	79,639 <sup>b</sup>
Holding Areas	1,040
Average "Under the Roof" <sup>c</sup>	80,679 <sup>d</sup>
Highest One Day Count	83,991 <sup>e</sup>

### Special Use Beds

Medical Beds	0
Mental Health Beds	0

### County Jail Populations

Felony	56,676
Misdemeanor	22,963
Total	79,639
Non-Sentenced Males	40,724
Non-Sentenced Females	5,346
Sentenced Males	28,589
Sentenced Females	4,980
Total	79,639
Maximum Security Inmates	35,147
Medium Security Inmates	20,942
Minimum Security Inmates	23,550
Total	79,639

### Released Per Month Due to Lack of Space

Pretrial Release	6,916 <sup>f</sup>
Early Release	12,510 <sup>f</sup>
Total	19,426

### Inmates with 2 and 3 Strikes

2 Strike Inmates	3,377 <sup>g</sup>
3 Strike Inmates	2,158 <sup>g</sup>
Total	5,535

### Unservd Warrants

Felony Warrants	244,145 <sup>g</sup>
Misdemeanor Warrants	2,327,017 <sup>g</sup>
Total	2,571,162

### Inmates From Other Jurisdictions

Housed on Federal Contract	3,369
Housed on Contract with CDC	2,160
From Other Counties on Contract	13
Awaiting Transport	1,375
Total	6,917

### Other Jail Profile Survey Variables

Bookings Per Month	102,066 <sup>f</sup>
Juveniles in Custody	154 <sup>f</sup>
Criminal / Illegal Aliens	8,771
Assaults On Staff	217

- a. The Average Daily Population for all jurisdictions (excluding Type I's) does not include inmates in holding areas.
- b. Unless otherwise indicated, the numbers reported are the average across the days in the quarter.
- c. "Under the Roof" is the sum of the Average Daily Population plus the average daily number of inmates in Holding Areas.
- d. Totals may not be the exact sum of the subtotals due to rounding.
- e. The sum of all Highest One Day inmate population counts from all jurisdictions.
- f. These data are collected on a monthly basis, this figure is an average of the total numbers collected each month during this quarter.
- g. These data are one-day snapshots collected at the end of the quarter.