

JAIL PROFILE SURVEY

2001, 3rd QUARTER SURVEY RESULTS

FACILITIES STANDARDS AND OPERATIONS DIVISION

BOARD OF CORRECTIONS

STATE OF CALIFORNIA
600 Bercut Drive
Sacramento, CA 95814-0185
(916) 445-5073
www.bdcorr.ca.gov

JAIL PROFILE SURVEY

EXPLANATION OF RESULTS

The following pages contain the Jail Profile Survey results for the third quarter of 2001. Page 1 contains the quarterly totals based upon the monthly and quarterly data submitted to us by the participating jurisdictions. Page 2 and 3 show the trend data for variables we have been tracking for the last ten years. The remainder of this page provides explanations and clarifications of the data presented.

Page 1

- Unless otherwise noted, "projected totals" are based upon the average per day for the variable in question. For example, there was an average of 73,842 inmates per day in local jails (excluding Type I's) during the three-month span of July to September 2001.
 - For some variables (other than ADP), we did not receive data from all jurisdictions. We compute the percentage of the ADP that was housed in the jurisdictions that did supply their data for the variable in question. Next, we increase the received number for the variable in question by an amount that estimates the statewide total. For example, if 90% of the state's ADP was housed in jurisdictions that provided us with the number of Three Strike inmates, we would increase that number by 1/9th to estimate the state total.
 - The number for "Bookings" is the average of the monthly totals for July, August and September.
 - For the following variables, the numbers presented are the totals as of the mid-quarter (i.e., August 15, 2001): Pretrial Release, Early Release, 2 and 3 Strikes, Felony Warrants, Misdemeanor Warrants, Juveniles in Custody and Undocumented Aliens.
 - "Assaults" is the total number of serious inmate assaults on staff (resulting in a crime report), statewide, during the third quarter of 2001.
- Pages 2 and 3
- The data in the 10-Year Summary tables are based upon survey data which the Board has gathered since the early 1980's.
 - Prior to 1995, yearly averages were reported to the Board on an annual basis. Yearly averages from 1996 on have been the average across the 12 calendar months. In 1995, the yearly figure reported is the fourth quarter average, since we do not have data from the first three quarters.

Please note: you will notice that there have been significant changes from the second to the third quarters in the following variables: **MEDICAL ATTENTION REQUIRED, MENTAL HEALTH ATTENTION REQUIRED and EARLY RELEASE**. These changes were due to reporting errors that have recently been rectified. Any previous trend information for these variables may be unreliable.

BOARD OF CORRECTIONS JAIL PROFILE SURVEY

Reporting Period: July to September, 2001

County Jail Populations	
ADP ^a	73,842 ^b
Holding Areas	1,184
Average "Under the Roof" ^c	75,026 ^d
Highest One Day Count ^e	78,121 ^e

County Jail Populations	
Felony	53,004
Misdemeanor	20,838
Unspecified	0
Total	
Non-Sentenced Males	40,176
Non-Sentenced Females	5,404
Sentenced Males	24,372
Sentenced Females	3,890
Total	
Maximum Security Inmates	32,574
Medium Security Inmates	21,677
Minimum Security Inmates	19,591
Total	
Housed on Federal Contract	3,191
Housed on Contract with CDC	2,517
From Other Counties on Contract	7
Awaiting Transport	1,189
Total	
	6,904

Inmates From Other Jurisdictions	
Housed on Federal Contract	3,191
Housed on Contract with CDC	2,517
From Other Counties on Contract	7
Awaiting Transport	1,189
Total	
	6,904

Special Use Beds	
Medical Attention Required	5,784
Mental Health Attention Required	4,425
Medical Beds	927
Mental Health Beds	3,070

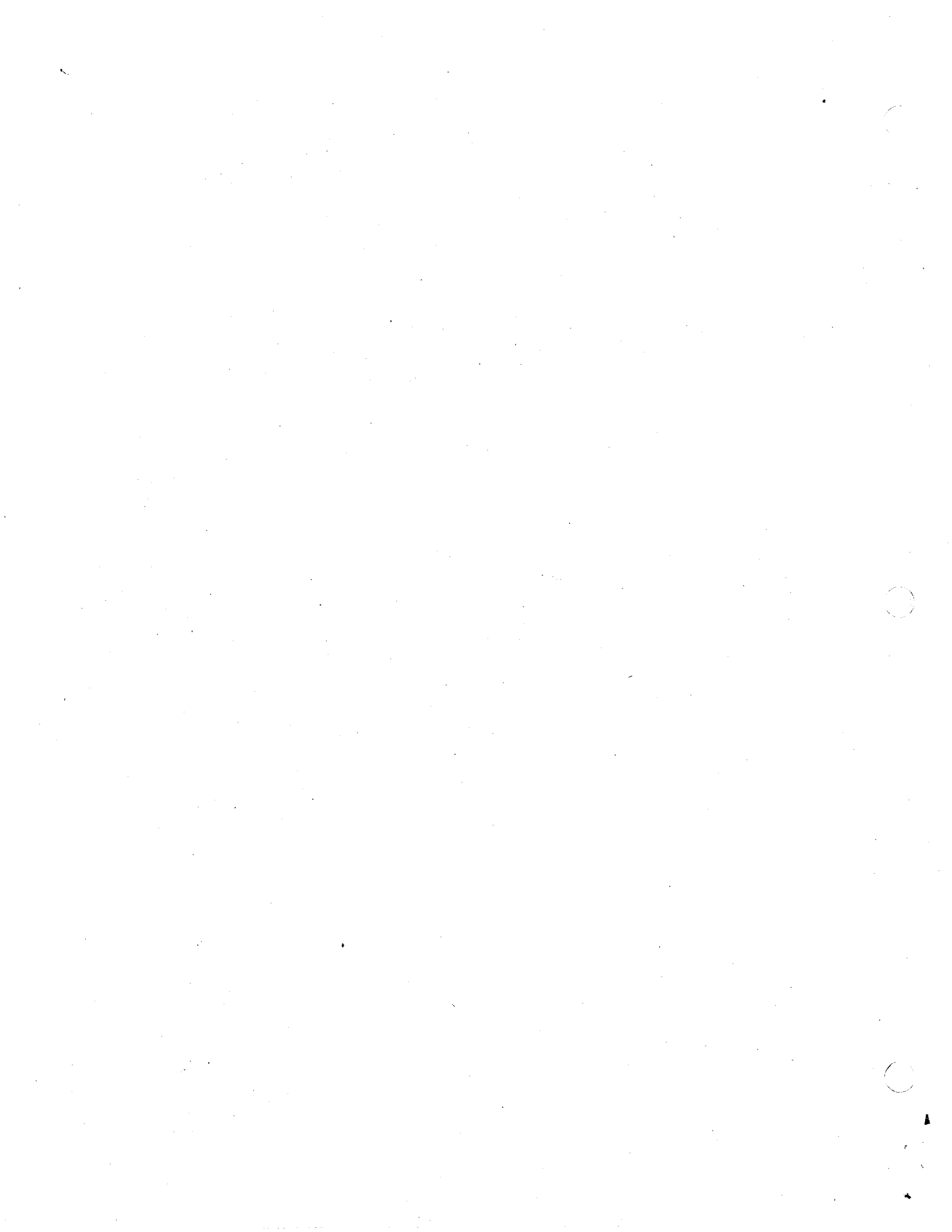
Released Per Month Due to Lack of Space	
Pretrial Release	5,181 ^f
Early Release	5,521 ^f
Total	
	10,702

Inmates with 2 and 3 Strikes	
2 Strike Inmates	3,678 ^f
3 Strike Inmates	1,839 ^f
Total	
	5,517

Unservd Warrants	
Felony Warrants	267,025 ^f
Misdemeanor Warrants	1,929,412 ^f
Total	
	2,196,437

Other Jail Profile Survey Variables	
Bookings Per Month	103,823 ^f
Juveniles in Custody	60 ^f
Criminal / Illegal Aliens	10,343 ^f
Assaults On Staff	203 ^f

a. The Average Daily Population in all jurisdictions for the days covered by the report.
 b. Unless otherwise indicated, the numbers reported are the average across the number of days covered by the report.
 c. The sum "Under the Roof" is the sum of the Average Daily Population plus the inmates in Holding Areas.
 d. Grand Totals may not be exact sum of the subtotals due to rounding.
 e. The Highest One Day Inmate population count across all California jurisdictions.
 f. This number is the average for the quarters represented by the span of time covered by this report.
 g. Total at end of quarter.

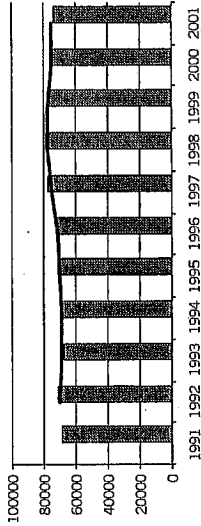


Jail Profile Survey

2001

Average Daily Population

10 Year Summary									
1991	1992	1993	1994	1995	1996	1997	1998	1999	2000
68,923	70,853	67,576	69,233	71,107	72,007	76,894	79,143	76,311	74,851

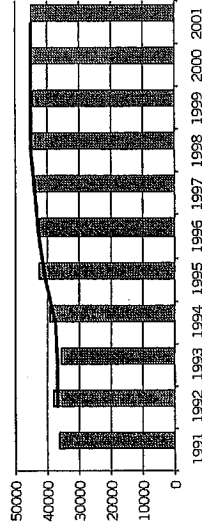


	Q1	Q2	Q3	Q4	Average
2000	75,070	75,314	75,076	73,950	74,851
2001	74,221	74,564	73,842		74,208

In the 3rd Quarter of 2001, the ADP (73,842) slipped to its lowest level since the 4th Quarter of 1996 (72,910). Between 1996 and 2001, the ADP rose to a peak of 80,391 inmates in the 3rd Quarter of 1998, after which it gradually declined to its present level. One should not conclude from this that California has a surplus of jail capacity. The number of beds that currently meet the Board of Corrections standards is 73,296. As of the 3rd Quarter of 2001, over 10,000 people were given pretrial or early releases due to lack of jail space. The decline in ADP was probably the result of a somewhat lower number of bookings over the last five years. Since the ADP began to decline toward the end of 1998, we have been expecting it to bottom out and again start to rise. Although we are surprised that the declining trend has lasted as long as it has, we have been expecting jail populations to begin rising again in the near future (especially given the apparent increase in bookings discussed below).

Non-sentenced ADP

10 Year Summary									
1991	1992	1993	1994	1995	1996	1997	1998	1999	2000
36,064	38,110	35,899	39,122	42,237	42,539	44,593	45,303	44,492	44,922

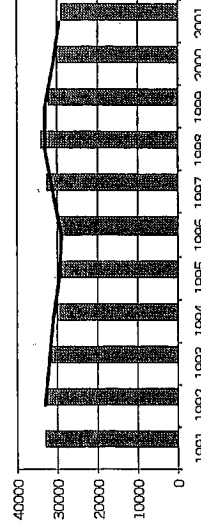


	Q1	Q2	Q3	Q4	Average
2000	45,880	44,798	44,764	44,253	44,922
2001	44,916	45,047	45,579		45,183

The ADP in the 3rd Quarter of 1997 was 77,504 compared with 73,842 this Quarter. Despite the almost 4,000 fewer inmates this quarter when compared with the 3rd Quarter of 1997, the number of non-sentenced inmates is actually higher (45,579 in the 3rd Quarter of 2001 versus 45,003 in the 3rd Quarter of 1997). In fact, the average non-sentenced population for 2001 is the highest in history. This phenomenon concerns us and needs to be watched carefully because it has occurred during a time of somewhat reduced bookings; bookings now appear to be on the rise.

Sentenced ADP

10 Year Summary									
1991	1992	1993	1994	1995	1996	1997	1998	1999	2000
32,859	32,743	31,677	30,142	28,870	29,468	32,301	33,841	31,819	29,929



	Q1	Q2	Q3	Q4	Average
2000	29,190	30,516	30,311	29,697	29,929
2001	29,304	29,518	28,263		29,024

The sentenced population is at its lowest level since the beginning of the Jail Profile Survey in the 4th Quarter of 1995. At the current level of 28,263 inmates, the ADP for sentenced inmates has decreased by over 4,000 inmates in the last five years (since the 3rd Quarter of 1997). Caution must be used in interpreting these data, because, due to lack of space, over 5,000 inmates are released early from their sentences each month.

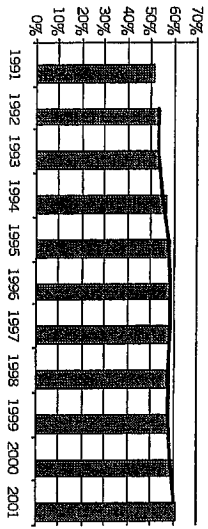
Jail Profile Survey

2001

Percentage Non-sentenced

10 Year Summary									
1991	1992	1993	1994	1995	1996	1997	1998	1999	2000
52%	54%	53%	57%	59%	59%	58%	57%	58%	60%

Q1					Q2					Q3					Q4					Average									
2000	61%	59%	60%	60%	2000	61%	59%	60%	60%	2000	61%	59%	60%	60%	2000	61%	59%	60%	60%	2000	61%	59%	60%	60%	2000	61%	59%	60%	60%
2001	61%	60%	62%		2001	61%	60%	62%		2001	61%	60%	62%		2001	61%	60%	62%		2001	61%	60%	62%		2001	61%	60%	62%	

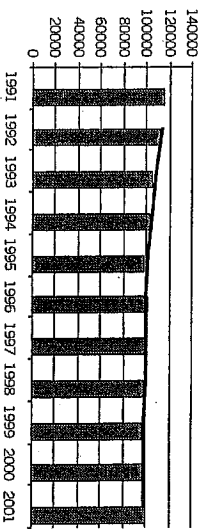


Not surprisingly, given the data above, the percentage of non-sentenced inmates reached the highest value ever this quarter. Non-sentenced inmates currently represent 62% of the inmate population (in contrast to 47% in 1987, and 58% in the 3rd Quarter of 1997, five years ago). This increasing proportion of non-sentenced inmates has a number of important jail-management implications including increased costs. In addition, as the non-sentenced population increases and jail capacity remains constant, the pressures to release sentenced inmates early (i.e., prior to their fully completing their sentences) increase also.

Average Number of Persons Booked Per Month

10 Year Summary									
1991	1992	1993	1994	1995	1996	1997	1998	1999	2000
115,313	112,009	105,593	103,996	97,589	101,940	99,182	98,854	96,860	98,102

Q1					Q2					Q3					Q4					Average									
2000	99,151	98,852	101,528	92,896	2000	99,151	98,852	101,528	92,896	2000	99,151	98,852	101,528	92,896	2000	99,151	98,852	101,528	92,896	2000	99,151	98,852	101,528	92,896	2000	99,151	98,852	101,528	92,896
2001	96,424	97,492	103,823		2001	96,424	97,492	103,823		2001	96,424	97,492	103,823		2001	96,424	97,492	103,823		2001	96,424	97,492	103,823		2001	96,424	97,492	103,823	

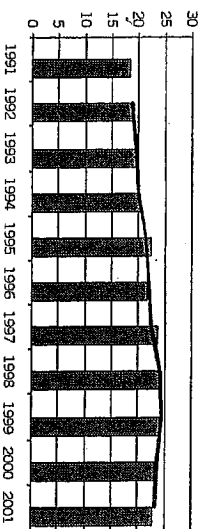


Despite reports of the reduction in reported crime in the last few years, the number of bookings per month in the 3rd Quarter of 2001 (103,823) was higher than the 3rd Quarter bookings per month in 1998, 1999, and 2000. It was also the highest number of bookings per month for any quarter since the 3rd Quarter of 1997. There were 6,000 more bookings per month in the 3rd Quarter of 2001 than in the 1st Quarter of 2001. Time will tell whether this relatively high number of bookings will result in the long expected increase in ADP.

Average Length Of Stay

10 Year Summary									
1991	1992	1993	1994	1995	1996	1997	1998	1999	2000
18.2	19.2	19.5	20.3	22.3	21.6	23.7	24.4	24.0	23.3

Q1					Q2					Q3					Q4					Average									
2000	23.0	23.1	22.7	24.4	2000	23.0	23.1	22.7	24.4	2000	23.0	23.1	22.7	24.4	2000	23.0	23.1	22.7	24.4	2000	23.0	23.1	22.7	24.4	2000	23.0	23.1	22.7	24.4
2001	23.6	23.4	21.9		2001	23.6	23.4	21.9		2001	23.6	23.4	21.9		2001	23.6	23.4	21.9		2001	23.6	23.4	21.9		2001	23.6	23.4	21.9	



In the 3rd Quarter of 1997, the average length of stay for all inmates was 22.6 days. In the 3rd Quarters since then, the average length of stay was 24.0, 23.5, 22.7 days in 1998, 1999 and 2000 respectively. This Quarter, the average length of stay was 22.2 days. The gradual decline in the average length of stay accounts for some, but certainly not all, of the gradual decline in the ADP.

Average Daily Population

Non-sentenced / Sentenced Male / Female

California County Jails - For Month Of July - September 2001

Jurisdiction	Non-sentenced				Sentenced				Total		
	Male		Female		Male		Female				
	#	%	#	%	#	%	#	%			
1. Alameda Sheriff's Dept.	2,579	90%	273	10%	729	88%	99	12%	828	23%	3,680
2. Amador Sheriff's Dept.	26	79%	7	21%	23	80%	6	20%	29	46%	62
3. Butte Sheriff's Dept.	180	62%	111	38%	138	87%	21	13%	158	35%	449
4. Calaveras Sheriff's Dept.	30	93%	2	7%	24	88%	3	12%	27	46%	60
5. Colusa Sheriff's Dept.	23	90%	3	10%	20	92%	2	8%	21	45%	47
6. Contra Costa Sheriff's Dept.	1,038	88%	144	12%	512	91%	50	9%	563	32%	1,745
7. Del Norte Sheriff's Dept.	55	87%	8	13%	43	86%	7	14%	50	44%	113
8. El Dorado Sheriff's Dept.	117	90%	14	10%	104	83%	21	17%	126	49%	256
9. Fresno Sheriff's Dept.	1,717	91%	178	9%	366	88%	49	12%	415	18%	2,310
10. Glenn Sheriff's Dept.	65	83%	14	17%	4	81%	1	19%	5	6%	84
11. Humboldt Sheriff's Dept.	188	86%	32	14%	132	90%	14	10%	146	40%	366
12. Imperial Sheriff's Dept.	227	88%	31	12%	179	94%	11	6%	191	43%	448
13. Inyo Sheriff's Dept.	23	87%	3	13%	21	84%	4	16%	25	49%	51
14. Kern Sheriff's Dept.	1,349	90%	150	10%	533	74%	188	26%	721	32%	2,221
15. Kings Sheriff's Dept.	123	91%	12	9%	139	84%	27	16%	166	55%	301
16. Lake Sheriff's Dept.	59	75%	20	25%	95	85%	17	15%	113	59%	191
17. Lassen Sheriff's Dept.	39	70%	17	30%	44	83%	9	17%	54	49%	110
18. Los Angeles Sheriff's Dept.	9,932	89%	1,275	11%	7,001	88%	954	12%	7,955	42%	19,162
19. Madera Corrections Dept.	188	88%	25	12%	92	92%	8	8%	101	32%	314
20. Marin Sheriff's Dept.	209	90%	24	10%	34	79%	9	21%	43	16%	277
21. Mariposa Sheriff's Dept.	18	82%	4	18%	13	87%	2	13%	15	41%	38
22. Mendocino Sheriff's Dept.	138	88%	19	12%	95	86%	15	14%	110	41%	267
23. Merced Sheriff's Dept.	375	91%	39	9%	137	88%	18	12%	155	27%	570
24. Modoc Sheriff's Dept.	24	92%	2	8%	10	83%	2	17%	12	31%	37
25. Mono Sheriff's Dept.	6	71%	2	29%	7	71%	3	29%	10	56%	18
26. Monterey Sheriff's Dept.	429	91%	44	9%	470	90%	55	10%	524	53%	997
27. Napa Corrections Dept.	82	91%	8	9%	119	92%	11	8%	130	59%	219
28. Nevada Sheriff's Dept.	63	94%	4	6%	47	83%	10	17%	57	46%	124
29. Oakland Police Dept.	105	80%	26	20%	0	0%	0	0%	0	0%	132
30. Orange Sheriff's Dept.	1,775	89%	227	11%	2,019	86%	331	14%	2,350	54%	4,352
31. Placer Sheriff's Dept.	230	90%	25	10%	181	83%	37	17%	218	46%	473
32. Plumas Sheriff's Dept.	24	79%	6	21%	19	88%	3	12%	22	42%	52
33. Riverside Sheriff's Dept.	1,766	90%	200	10%	866	84%	162	16%	1,028	34%	2,994
34. Sacramento Sheriff's Dept.	1,560	87%	240	13%	1,336	87%	196	13%	1,531	46%	3,332
35. San Benito Sheriff's Dept.	61	87%	9	13%	27	83%	6	17%	32	31%	103

Average Daily Population

Non-sentenced / Sentenced Male / Female California County Jails - For Month Of July - September 2001

Jurisdiction	Non-sentenced				Sentenced				Total #				
	Male		Female		Male		Female						
	#	%	#	%	#	%	#	%					
36. San Bernardino Sheriff's Dept.	3,231	88%	428	12%	3,659	74%	1,058	81%	244	19%	1,302	26%	4,961
37. San Diego Sheriff's Dept.	2,299	85%	420	15%	2,719	59%	1,602	84%	299	16%	1,901	41%	4,620
38. San Diego Work/Furlough	0	0%	0	0%	0	0%	177	93%	14	7%	190	100%	190
39. San Francisco Sheriff's Dept.	1,377	88%	189	12%	1,565	88%	198	89%	25	11%	223	12%	1,789
40. San Joaquin Sheriff's Dept.	533	87%	83	13%	615	50%	520	84%	97	16%	617	50%	1,232
41. San Luis Obispo Sheriff's Dept.	125	87%	18	13%	143	42%	179	89%	22	11%	200	58%	344
42. San Mateo Sheriff's Dept.	483	91%	46	9%	529	50%	448	83%	89	17%	537	50%	1,066
43. Santa Ana Police Dept.	350	90%	38	10%	388	100%	0	100%	0	0%	0	0%	389
44. Santa Barbara Sheriff's Dept.	432	89%	56	11%	488	58%	307	86%	49	14%	356	42%	843
45. Santa Clara Corrections Dept.	2,339	90%	263	10%	2,601	65%	1,221	88%	160	12%	1,381	35%	3,982
46. Santa Clara Probation Dept.	0	0%	0	0%	0	0%	194	79%	51	21%	245	100%	245
47. Santa Cruz Sheriff's Dept.	235	91%	24	9%	260	50%	233	89%	29	11%	263	50%	522
48. Scapular House	0	0%	0	0%	0	0%	166	89%	21	11%	187	100%	187
49. Shasta Sheriff's Dept.	194	85%	33	15%	227	58%	141	86%	22	14%	163	42%	390
50. Sierra Sheriff's Dept.	4	100%	0	0%	4	73%	1	100%	0	0%	1	27%	5
51. Siskiyou Sheriff's Dept.	53	88%	7	12%	60	64%	28	85%	5	15%	33	36%	93
52. Solano Sheriff's Dept.	595	85%	106	15%	701	70%	259	87%	38	13%	298	30%	998
53. Sonoma Sheriff's Dept.	468	88%	65	12%	533	52%	430	87%	64	13%	494	48%	1,027
54. Stanislaus Sheriff's Dept.	526	88%	74	12%	600	56%	376	81%	86	19%	462	44%	1,063
55. Sutter Sheriff's Dept.	125	86%	21	14%	146	63%	70	81%	16	19%	86	37%	232
56. Tehama Sheriff's Dept.	96	87%	15	13%	111	57%	71	86%	11	14%	82	43%	193
57. Trinity Sheriff's Dept.	18	83%	4	17%	21	71%	7	77%	2	23%	9	29%	30
58. Tulare Sheriff's Dept.	601	89%	72	11%	673	57%	441	87%	66	13%	508	43%	1,180
59. Tuolumne Sheriff's Dept.	45	84%	9	16%	54	44%	55	81%	13	19%	68	56%	122
60. Ventura Sheriff's Dept.	693	88%	92	12%	786	62%	417	86%	68	14%	484	38%	1,270
61. Ventura Work-Furlough	0	0%	0	0%	0	0%	81	79%	22	21%	102	100%	102
62. Yolo Sheriff's Dept.	257	81%	62	19%	319	78%	77	84%	14	16%	92	22%	410
63. Yuba Sheriff's Dept.	275	77%	80	23%	356	89%	35	78%	10	22%	45	11%	401
Statewide	40,175	88%	5,404	12%	45,579	62%	24,372	86%	3,890	14%	28,263	38%	73,842

Jail Populations: Quarter 3, 2000 Versus Quarter 3, 2001

Jurisdiction	Qtr 3, 2000	Qtr 3, 2001	Minus Qtr 3, 2001 Qtr 3, 2000	+/-%	% of Total Increase or Decrease	Cum %	Cum Total
Riverside Sheriff's Dept.	2,760	2,994	244	8.9%	22.3%	22.26%	244
Sacramento Sheriff's Dept.	3,180	3,332	152	4.8%	13.0%	38.22%	386
Solano Sheriff's Dept.	876	998	123	14.1%	11.2%	46.44%	609
Kern Sheriff's Dept.	2,104	2,221	117	5.6%	10.7%	57.12%	626
Contra Costa Sheriff's Dept.	1,638	1,745	107	6.5%	9.8%	68.88%	733
San Diego Work/Furlough	131	191	60	45.8%	5.5%	72.36%	793
San Francisco Sheriff's Dept.	1,744	1,789	45	2.6%	4.1%	76.48%	838
Yolo Sheriff's Dept.	378	409	31	8.2%	2.8%	79.29%	869
Calaveras Sheriff's Dept.	39	60	21	53.8%	1.9%	81.20%	890
Madera Corrections Dept.	295	314	19	6.4%	1.7%	82.94%	909
Sutter Sheriff's Dept.	214	233	19	8.9%	1.7%	84.67%	928
Amador Sheriff's Dept.	43	62	19	44.2%	1.7%	86.41%	947
Colusa Sheriff's Dept.	30	47	17	56.7%	1.6%	88.05%	965
Mendocino Sheriff's Dept.	251	268	17	6.8%	1.6%	89.60%	982
Placer Sheriff's Dept.	457	473	16	3.5%	1.5%	91.15%	999
Lassen Sheriff's Dept.	95	109	14	14.7%	1.3%	93.89%	1,016
Tehama Sheriff's Dept.	180	193	13	7.2%	1.2%	95.07%	1,029
Stanislaus Sheriff's Dept.	1,052	1,064	12	1.1%	1.1%	96.17%	1,042
Santa Ana Police Dept.	380	388	8	2.1%	0.7%	96.90%	1,052
Siskiyou Sheriff's Dept.	85	93	8	9.4%	0.7%	97.63%	1,070
Humboldt Sheriff's Dept.	359	366	7	1.9%	0.6%	98.27%	1,077
Tuolumne Sheriff's Dept.	116	122	6	5.2%	0.5%	98.81%	1,083
Monterey Sheriff's Dept.	993	997	4	0.4%	0.4%	99.18%	1,087
Oakland Police Dept.	127	131	4	3.1%	0.4%	99.54%	1,091
San Benito Sheriff's Dept.	100	103	3	3.0%	0.3%	99.82%	1,094
Plumas Sheriff's Dept.	51	52	1	2.0%	0.1%	99.91%	1,096
Sierra Sheriff's Dept.	3	4	1	33.3%	0.0%	100.00%	1,096
Marin Sheriff's Dept.	277	277	0	0.0%	0.0%	100.00%	1,096
Inyo Sheriff's Dept.	60	60	0	0.0%	0.0%	100.00%	1,096
Madoc Sheriff's Dept.	38	37	-1	-2.6%	0.0%	0.04%	1
Mariposa Sheriff's Dept.	39	38	-1	-2.6%	0.0%	0.09%	2
Napa Corrections Dept.	224	219	-5	-0.9%	0.1%	0.18%	4
Merced Sheriff's Dept.	575	570	-5	-0.9%	0.2%	0.40%	9
San Mateo Sheriff's Dept.	1,073	1,066	-7	-0.7%	0.3%	0.70%	16
Fresno Sheriff's Dept.	2,317	2,309	-8	-0.3%	0.4%	1.05%	24
Mono Sheriff's Dept.	27	19	-8	-29.6%	0.4%	1.41%	32
Tehu Sheriff's Dept.	39	30	-9	-23.1%	0.4%	1.80%	41
Nevada Sheriff's Dept.	132	123	-9	-6.8%	0.4%	2.20%	50
San Joaquin Sheriff's Dept.	1,242	1,232	-10	-0.8%	0.4%	2.64%	60
Del Norte Sheriff's Dept.	127	117	-10	-7.9%	0.7%	3.30%	75
Scappell House	206	187	-19	-9.2%	0.8%	4.13%	94
San Luis Obispo Sheriff's Dept.	384	343	-41	-10.7%	0.9%	5.05%	115
Shasta Sheriff's Dept.	411	390	-21	-5.1%	0.9%	5.98%	136
Ventura Work/Furlough	126	102	-24	-19.0%	1.1%	7.03%	160
Santa Clara Probation Dept.	270	245	-25	-9.3%	1.1%	8.13%	185
Santa Barbara Sheriff's Dept.	609	543	-66	-10.8%	1.1%	9.27%	211
El Dorado Sheriff's Dept.	283	256	-27	-9.5%	1.2%	10.46%	238
Glenn Sheriff's Dept.	112	84	-28	-25.0%	1.2%	11.69%	266
Lake Sheriff's Dept.	222	91	-131	-59.0%	1.4%	13.05%	297
Tulare Sheriff's Dept.	1,211	1,180	-31	-2.6%	1.4%	14.42%	328
Los Angeles Sheriff's Dept.	19,208	19,162	-46	-0.2%	2.0%	16.44%	374
Sonoma Sheriff's Dept.	1,074	1,027	-47	-4.4%	2.1%	18.61%	421
Butte Sheriff's Dept.	688	622	-66	-9.6%	2.7%	23.25%	529
King's Sheriff's Dept.	392	301	-91	-23.2%	4.0%	27.25%	620
Imperial Sheriff's Dept.	667	448	-219	-32.8%	5.2%	32.48%	739
San Bernardino Sheriff's Dept.	6,084	4,960	-1,124	-18.3%	5.5%	37.83%	863
Ventura Sheriff's Dept.	1,402	1,270	-132	-9.4%	5.8%	43.74%	998
Santa Clara Corrections Dept.	4,116	3,982	-134	-3.3%	6.9%	49.63%	1,129
San Diego Sheriff's Dept.	4,828	4,620	-208	-4.2%	9.0%	58.64%	1,334
San Diego Probation Dept.	213	213	0	100.0%	9.4%	68.00%	1,547
Alameda Sheriff's Dept.	4,008	3,680	-328	-8.2%	14.4%	82.42%	1,875
Orange Sheriff's Dept.	4,752	4,352	-400	-8.4%	17.6%	100.00%	2,275

Note: Totals subject to slight variation due to rounding

Total Increase: 1,096
Total Decrease: -2,275

**Interpretation of Table:
JAIL POPULATIONS: 3rd Quarter '00 versus 3rd Quarter '01**

This table:

- summarizes the ADP results for the 64 jurisdictions in California reporting data from Type II, III, and IV jails;
- summarizes jurisdiction ADP results for the most recent quarter (Column B);
- compares jurisdiction ADP for the most recent quarter with the same quarter last year (Column A);
- ranks the jurisdictions in terms of gains or losses in ADP from high to low (Column C);
- lists the percentage growth or decline in ADP for each jurisdiction (Column D);
- lists the percentage of the overall State increase or decrease in ADP that is represented by each jurisdiction (Column E);
- lists, by jurisdiction, the cumulative percentage increase and decrease in the State ADP starting with the jurisdiction with the highest percentage of the increase and proceeding to the jurisdiction with the highest percentage of the decrease (Column F);
- lists, by jurisdiction, the cumulative total increase and decrease in the State ADP starting with the jurisdiction with the highest increase and proceeding to the jurisdiction with the biggest decrease (Column G); and,
- lists the jurisdictions that experienced decreases in their ADP as shaded.

Some important conclusions from this table are:

1. The two numbers at the bottom indicate the "total increase" in ADP (in this case - 1,096) and "total decrease" in ADP (2,275). In other words, the jurisdictions experiencing increases had a total increase of 1,096 ADP; and the jurisdictions experiencing decreases had a total decrease of 2,275 ADP. Subtracting 1,096 from 2,275 produces the overall decrease of 1,179 between the third quarter of 2000 and the third quarter of 2001.
2. The Riverside ADP increase of 244 is 22.3% of the total increase of 1,096. Twenty-eight jurisdictions had increases (down to Sierra Sheriff's Department) with two jurisdictions reporting no increase. When you get to Inyo Sheriff's Department, you have accounted for 100% of the increases (100% of the cumulative total of 1,096).
3. Jurisdictions that experienced a decrease in ADP are listed from smallest decrease to largest decrease (Modoc Sheriff's Department to Orange Sheriff's Department). When you get to the bottom of the table, you have accounted for 100% of the total decreases of 2,275 inmates.
4. The cumulative percentage of ADP increase for the top four jurisdictions (Riverside Sheriff's Department to Kern Sheriff's Department) is 57.12%. In other words, four jurisdictions accounted for about 57% of the total ADP increase. Three jurisdictions (San Diego Probation, Alameda and Orange Sheriff's Departments) account for about 41% of the decreases. Please note that San Diego Probation Department will no longer be reporting on the Jail Profile Survey, which accounts for approximately ten percent (10%) of the total decrease.