

JAIL PROFILE SURVEY

**1998, 3rd QUARTER
SURVEY RESULTS**

FACILITIES STANDARDS AND OPERATIONS DIVISION

BOARD OF CORRECTIONS

STATE OF CALIFORNIA
600 Bercut Drive
Sacramento, CA 95814-0185
(916) 445-5073

JAIL PROFILE SURVEY

EXPLANATION OF RESULTS

The following pages contain the Jail Profile Survey results for the third quarter of 1998. Page 1 contains the quarterly totals based upon the monthly and quarterly data submitted to us by the participating jurisdictions. Page 2 and 3 show the trend data for variables we have been tracking for the last ten years. The remainder of this page provides explanations and clarifications of the data presented.

Page 1

- Unless otherwise noted, "projected totals" are based upon the average per day for the variable in question. For example, there were an average of 79,639 inmates per day in local jails (excluding Type I's) during the three month span of July to September 1998.
- For some variables, we did not receive data from all jurisdictions. In these cases, we project what the statewide number of felony inmates would have been if we had complete data from all the participating jurisdictions (based upon the representativeness of our sample).
- The number for "Bookings" is the average of the monthly totals for July, August and September.
- For the following variables, the numbers presented are the totals as of the mid-quarter (i.e., August 15, 1998); Pretrial Release, Early Release, 2 and 3 Strikes, Felony Warrants, Misdemeanor Warrants, Juveniles in Custody and Undocumented Aliens.
- Assaults is the total number of serious inmate assaults on staff (resulting in a crime report), statewide, during the third quarter of 1998.

Pages 2 and 3

- The data in the 10-Year Summary tables are based upon survey data which the Board has gathered since the early 1980's.
- Prior to 1995, yearly averages were reported to the Board on an annual basis. Yearly averages from 1996 on have been the average across the 12 calendar months. In 1995, the yearly figure reported is the fourth quarter average, since we do not have data from the first three quarters.

**JAIL PROFILE SURVEY
CALIFORNIA COUNTY JAILS - FOR MONTHS OF JULY - SEPTEMBER 1998**

<u>Average Daily Population (ADP)</u>	<u>Projected Total</u>
Highest One Day Count ^a	83,991 ^b
ADP	79,639 ^c
Holding Areas	1,030
Average "Under the Roof" ^d	80,669 ^e

<u>Inmates from Other Jurisdictions</u>	<u>Projected Total</u>
Inmates Housed on Federal Contract	3,369
Inmates Housed on Contract with CDC	2,160
Inmates from Other Counties on Contract	15
Inmates Awaiting Transport	1,375
Total	6,918

Categories of Inmates

Felony	55,943
Misdemeanor	22,655
Unspecified	1,041
Total	79,639
Non-Sentenced Males	40,723
Non-Sentenced Females	5,346
Sentenced Males	28,589
Sentenced Females	4,980
Total	79,639
Maximum Security Inmates	35,005
Medium Security Inmates	20,856
Minimum Security Inmates	23,454
Unspecified	325
Total	79,639

Special Use Beds

Medical Beds	855
Mental Beds	2,546

^a The highest one day inmate population counts in the 63 jurisdictions.

^b Unless otherwise indicated, the numbers reported in this table are an average across the days covered by the report.

^c The Average Daily Population in all jurisdictions is for the days covered by the report.

^d The term "Under the Roof" is the sum of the Average Daily Population plus the inmates in Holding Areas.

Number of People Released Per Month Due to Lack of Space

Pretrial Release	6,915
Early Release	12,510
Total	19,425^e

Inmates with 2 and 3 Strikes

2 Strike Inmates	3,394 ^f
3 Strike Inmates	2,172 ^f
Total	5,566^e

Unserved Warrants

Felony Warrants	245,655 ^f
Misdemeanor Warrants	2,341,409 ^f
Total	2,587,063

Other Jail Profile Survey Variables

Bookings per Month	102,134 ^f
Juveniles in Custody	155 ^f
Undocumented Aliens	8,907 ^f
Assaults	218 ^f

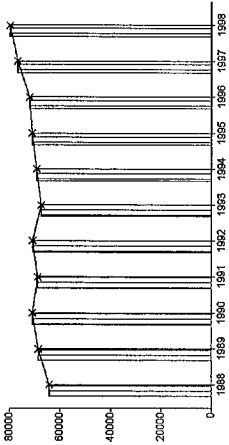
^e Grand totals may not add up exactly to the column totals due to rounding.

^f This number is the average for the quarters represented by the span of time covered by this report.

Average Daily Population

10 Year Summary						
1988	1989	1990	1991	1992	1993	1997
64,335	68,535	70,845	68,923	70,853	67,576	76,906

For the first time in the history of the Jail Profile Survey (a three-year, twelve-quarter time span) the ADP decreased. The decrease was small (752 inmates from 80,391 to 79,639). Nevertheless, we have been predicting for some time that such a decrease would occur for several reasons, including: 1) the current ADP exceeds the number of beds that meet the Board of Corrections standards by about 9,000, and 2) almost 20,000 people avoid incarceration, or are released early, each month due to lack of jail space. In the absence of a significant amount of new jail construction or changes in sentencing policies, we expect the jail population to hover around 80,000 inmates for the foreseeable future.



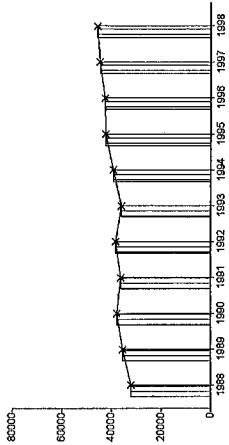
Quarterly Results

	Q1	Q2	Q3	Q4	Average
1997	75,684	76,778	77,529	77,633	76,906
1998	79,620	80,391	79,639		79,883

Non-Sentenced ADP

10 Year Summary						
1988	1989	1990	1991	1992	1993	1997
31,959	35,264	37,630	36,064	38,110	35,899	44,590

Even though the overall ADP decreased, the non-sentenced population increased. The male non-sentenced population increased by 893, while the female non-sentenced population decreased by 398. The increase in the male non-sentenced population is perhaps due to the fact that the number of 2 and 3 Strike inmates increased this quarter.



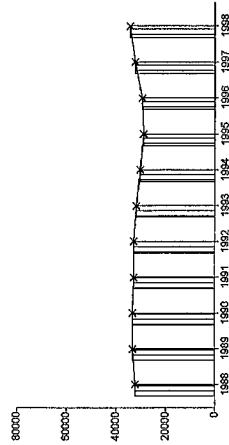
Quarterly Results

	Q1	Q2	Q3	Q4	Average
1997	44,257	44,072	45,003	45,028	44,590
1998	45,283	45,575	46,069		45,642

Sentenced ADP

10 Year Summary						
1988	1989	1990	1991	1992	1993	1997
32,376	33,271	33,215	32,859	32,743	31,677	32,316

The sentenced ADP decreased this quarter by 1,146 inmates (a 3.6% decrease). This is a reversal in trend in that the sentenced ADP has been increasing steadily over the last 12 months. The decrease is consistent with the fact that the number of inmates released early due to lack of space increased this quarter. If we are correct about the fact that the practical ADP ceiling is around 80,000 inmates, any increase in a category such as non-sentenced inmates will produce a commensurate decrease in its opposite category, sentenced inmates.

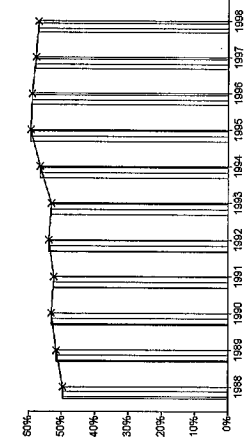


Quarterly Results

	Q1	Q2	Q3	Q4	Average
1997	31,426	32,705	32,526	32,606	32,316
1998	34,337	34,816	33,570		34,241

Percentage Non-Sentenced

10 Year Summary										
	1988	1989	1990	1991	1992	1993	1994	1995	1996	1997
	50%	51%	53%	52%	54%	53%	57%	59%	59%	58%



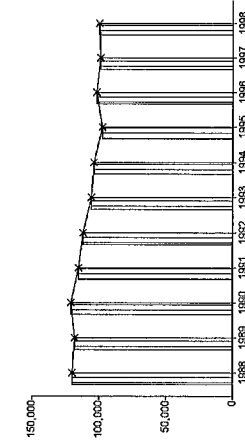
The percentage of non-sentenced inmates has stayed within the narrow range of 57% to 59% since 1994. This quarter the percentage of non-sentenced inmates increased from 57% to 58% percent. Unless the percentage shows a reliable increase or decrease for several quarters, we will assume that the non-sentenced/sentenced ratio has stabilized and will continue as is for the foreseeable future.

Quarterly Results

	Q1	Q2	Q3	Q4	Average
1997	58	57	58	58	58
1998	57	57	58	58	57

Average Number of Persons Booked Per Month

10 Year Summary										
	1988	1989	1990	1991	1992	1993	1994	1995	1996	1997
	119,838	118,253	120,716	115,313	112,009	105,593	103,996	97,589	101,939	99,180



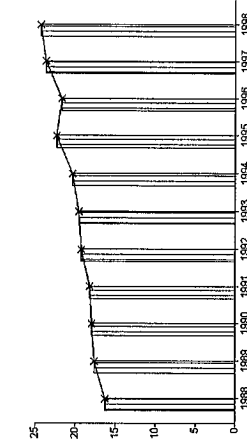
The average number of persons booked per month for this quarter was 102,148. While this is an increase over the previous quarter, the 102,148 bookings is about 3,000 fewer than the third quarter of 1997. Basically, this number has stayed within the range of between about 93,000 per month and 105,000 per month since 1993. If within-year quarterly fluctuations prove to be reliable from year to year, we can expect in decline in bookings in the fourth quarter.

Quarterly Results

	Q1	Q2	Q3	Q4	Average
1997	98,505	99,686	105,096	93,434	99,180
1998	97,687	100,754	102,148		100,197

Average Length of Stay

10 Year Summary										
	1988	1989	1990	1991	1992	1993	1994	1995	1996	1997
	16.3	17.6	17.9	18.2	19.2	19.5	20.3	22.3	21.6	23.7



The Average Length of Stay declined for the third straight quarter to 24.0 days. The Average Length of Stay decreases when the number of bookings outweighs any change in the ADP, as happened this quarter. Once again, if history turns out to be a reliable predictor, the Average Length of Stay will increase in the fourth quarter. At 24.0 days, the Average Length of Stay continues to be close to its highest recorded level (25.5 days, recorded in the fourth quarter of 1997).

Quarterly Results

	Q1	Q2	Q3	Q4	Average
1997	23.1	23.4	22.6	25.5	23.7
1998	24.7	24.2	24.0		24.3

**AVERAGE DAILY POPULATION
NON-SENTENCED/SENTENCED MALE/FEMALE
CALIFORNIA COUNTY JAILS - FOR MONTHS OF JULY - SEPTEMBER 1998**

	Non-sentenced				Sentenced				Total				
	Male		Female		Male		Female						
	#	%	#	%	#	%	#	%					
Jurisdiction													
1. Alameda Sheriff's Dept.	2,646	91%	252	9%	2,897	71%	958	80%	241	20%	1,199	29%	4,096
2. Amador Sheriff's Dept.	17	87%	3	13%	19	50%	17	88%	2	12%	19	50%	39
3. Butte Sheriff's Dept.	210	86%	33	14%	243	62%	125	84%	24	16%	150	38%	393
4. Calaveras Sheriff's Dept.	16	86%	3	14%	19	41%	23	85%	4	15%	27	59%	45
5. Colusa Sheriff's Dept.	31	87%	5	13%	36	50%	32	87%	5	13%	36	50%	72
6. Contra Costa Sheriff's Dept.	853	85%	149	15%	1,002	60%	590	90%	66	10%	655	40%	1,658
7. Del Norte Sheriff's Dept.	49	86%	8	14%	57	61%	33	90%	4	10%	36	39%	93
8. El Dorado Sheriff's Dept.	125	89%	16	11%	141	43%	166	88%	22	12%	188	57%	330
9. Fresno Sheriff's Dept.	1,577	89%	189	11%	1,766	79%	425	90%	45	10%	470	21%	2,236
10. Glenn Sheriff's Dept.	50	90%	5	10%	55	68%	20	77%	6	23%	26	32%	81
11. Humboldt Sheriff's Dept.	256	89%	33	11%	289	92%	22	91%	2	9%	25	8%	313
12. Imperial Sheriff's Dept.	155	50%	155	50%	310	50%	155	50%	155	50%	310	50%	619
13. Inyo Sheriff's Dept.	22	88%	3	12%	25	38%	34	82%	7	18%	41	62%	66
14. Kern Sheriff's Dept.	1,277	88%	177	12%	1,454	72%	439	78%	125	22%	564	28%	2,018
15. Kings Sheriff's Dept.	96	86%	15	14%	112	34%	188	85%	32	15%	220	66%	332
16. Lake Sheriff's Dept.	82	90%	9	10%	91	47%	77	74%	27	26%	104	53%	194
17. Lassen Sheriff's Dept.	53	84%	10	16%	63	50%	46	74%	16	26%	63	50%	126
18. Los Angeles Sheriff's Dept.	11,026	90%	1,201	10%	12,227	57%	7,898	86%	1,281	14%	9,179	43%	21,406
19. Madera Corrections Dept.	137	90%	15	10%	152	49%	145	93%	11	7%	157	51%	309
20. Marin Sheriff's Dept.	176	87%	27	13%	203	80%	43	86%	7	14%	49	20%	252
21. Mariposa Sheriff's Dept.	25	90%	3	10%	28	56%	21	96%	1	4%	22	44%	50
22. Mendocino Sheriff's Dept.	124	92%	10	8%	134	61%	76	87%	11	13%	87	39%	222
23. Merced Sheriff's Dept.	299	92%	27	8%	327	62%	179	90%	20	10%	199	38%	526
24. Modoc Sheriff's Dept.	9	82%	2	18%	11	36%	17	85%	3	15%	20	64%	31
25. Mono Sheriff's Dept.	12	90%	1	10%	14	64%	7	89%	1	11%	8	36%	22
26. Monterey Sheriff's Dept.	673	90%	76	10%	748	66%	332	87%	49	13%	381	34%	1,129
27. Napa Corrections Dept.	126	91%	12	9%	138	64%	66	83%	13	17%	79	36%	217
28. Nevada Sheriff's Dept.	67	87%	10	13%	77	59%	43	81%	10	19%	53	41%	130
29. Orange Sheriff's Dept.	1,952	89%	233	11%	2,185	42%	2,583	85%	450	15%	3,033	58%	5,218
30. Placer Sheriff's Dept.	205	90%	23	10%	228	52%	173	83%	35	17%	208	48%	436
31. Plumas Sheriff's Dept.	20	84%	4	16%	24	40%	30	82%	6	18%	36	60%	60
32. Riverside Sheriff's Dept.	1,733	90%	196	10%	1,929	72%	650	87%	99	13%	749	28%	2,679
33. Sacramento Sheriff's Dept.	1,617	83%	323	17%	1,940	55%	1,368	85%	249	15%	1,617	45%	3,557
34. San Benito Sheriff's Dept.	42	89%	5	11%	47	45%	50	89%	6	11%	56	55%	103

**AVERAGE DAILY POPULATION
NON-SENTENCED/SENTENCED MALE/FEMALE
CALIFORNIA COUNTY JAILS - FOR MONTHS OF JULY - SEPTEMBER 1998**

Jurisdiction	Non-sentenced				Sentenced				Total		
	Male		Female		Male		Female				
	#	%	#	%	#	%	#	%			
35. San Bernardino Sheriff's Dept.	3,134	86%	505	14%	1,220	82%	265	18%	1,485	29%	5,123
36. San Diego Probation Dept.	0	0%	37	100%	274	100%	0	0%	274	88%	311
37. San Diego Sheriff's Dept.	2,724	87%	406	13%	1,995	86%	336	14%	2,332	43%	5,462
38. San Diego Work/Furlough	1	60%	1	40%	184	83%	36	17%	221	99%	223
39. San Francisco Sheriff's Dept.	1,326	89%	162	11%	512	86%	80	14%	592	28%	2,081
40. San Joaquin Sheriff's Dept.	485	87%	72	13%	552	82%	118	18%	670	55%	1,228
41. San Luis Obispo Sheriff's Dept.	133	88%	18	12%	223	85%	40	15%	264	64%	415
42. San Mateo Sheriff's Dept.	461	93%	34	7%	668	87%	103	13%	771	61%	1,265
43. Santa Ana Police Dept.	349	87%	52	13%	19	97%	1	3%	20	5%	421
44. Santa Barbara Sheriff's Dept.	365	86%	61	14%	453	88%	64	12%	517	55%	943
45. Santa Clara Dept. of Correction	2,473	91%	239	9%	1,566	86%	248	14%	1,814	40%	4,527
46. Santa Clara Probation Dept.	0	0%	0	0%	240	83%	49	17%	289	100%	289
47. Santa Cruz Sheriff's Dept.	216	90%	24	10%	317	87%	46	13%	363	60%	604
48. Scapular House	0	0%	0	0%	204	95%	11	5%	216	100%	216
49. Shasta Sheriff's Dept.	174	86%	29	14%	109	81%	26	19%	135	40%	337
50. Sierra Sheriff's Dept.	2	98%	0	2%	1	100%	0	0%	1	35%	3
51. Siskiyou Sheriff's Dept.	42	83%	8	17%	26	83%	5	17%	31	38%	81
52. Solano Sheriff's Dept.	437	85%	75	15%	277	83%	56	17%	333	39%	844
53. Sonoma Sheriff's Dept.	473	86%	79	14%	433	86%	73	14%	506	48%	1,057
54. Stanislaus Sheriff's Dept.	473	90%	54	10%	455	84%	85	16%	540	51%	1,068
55. Sutter Sheriff's Dept.	102	85%	18	15%	103	82%	22	18%	126	51%	246
56. Tehama Sheriff's Dept.	0	0%	0	0%	194	90%	21	10%	215	100%	215
57. Trinity Sheriff's Dept.	28	88%	4	12%	17	81%	4	19%	21	40%	52
58. Tulare Sheriff's Dept.	439	86%	69	14%	580	88%	77	12%	657	56%	1,164
59. Tuolumne Sheriff's Dept.	45	86%	7	14%	57	88%	8	12%	65	55%	118
60. Ventura County Work Furlough	0	0%	0	0%	107	80%	27	20%	134	100%	134
61. Ventura Sheriff's Dept.	632	90%	74	10%	648	85%	112	15%	760	52%	1,466
62. Yolo Sheriff's Dept.	263	83%	54	17%	61	78%	17	22%	78	20%	395
63. Yuba County Sheriff's Dept.	188	86%	30	14%	65	86%	11	14%	75	26%	293
Statewide	40,723	88%	5,346	12%	28,689	85%	4,980	15%	33,570	42%	79,639

** Jurisdictions which have not yet been updated for the month(s) in question

Column totals may not add up to the grand total due to rounding

JAIL POPULATIONS: 3rd QUARTER '97 VERSUS 3rd QUARTER '98

* Instructions for interpreting this table appear on the back of this page.

	A	B	C	D	E	F	G
Jurisdiction	1997 Qtr 3	1998 Qtr 3	Qtr 3, 98 minus Qtr 3, 97	Qtr 3, 97 to Qtr 3, 98 % +/-	% of Total Increase or Decrease	Cum %	Cum Total
Los Angeles Sheriff's Dept.	20,771	21,406	635	3.1%	21.8%	21.84%	635
San Bernardino Sheriffs Dept.	4,695	5,123	428	9.1%	14.7%	36.55%	1,063
San Francisco Sheriff's Dept.	1,714	2,081	367	21.4%	12.6%	49.17%	1,430
San Diego Sheriff's Dept.	5,298	5,462	164	3.1%	5.6%	54.81%	1,594
Ventura Sheriff's Dept.	1,324	1,466	142	10.7%	4.9%	59.70%	1,736
San Mateo Sheriff's Dept.	1,133	1,265	132	11.7%	4.5%	64.24%	1,868
Santa Ana Police Dept.	312	421	109	34.9%	3.7%	67.98%	1,977
Imperial Sheriff's Dept.	523	619	96	18.4%	3.3%	71.29%	2,073
Orange Sheriff's Dept.	5,123	5,218	95	1.9%	3.3%	74.55%	2,168
Fresno Sheriff's Dept.	2,149	2,236	87	4.0%	3.0%	77.54%	2,255
Sacramento Sheriff's Dept.	3,475	3,557	82	2.4%	2.8%	80.36%	2,337
Sonoma Sheriff's Dept.	994	1,057	63	6.3%	2.2%	82.53%	2,400
Yolo Sheriff's Dept.	350	395	45	12.9%	1.5%	84.08%	2,445
Humboldt Sheriff's Dept.	271	313	42	15.5%	1.4%	85.52%	2,487
Lassen Sheriff's Dept.	85	126	41	48.2%	1.4%	86.93%	2,528
Santa Clara Probation Dept.	249	289	40	16.1%	1.4%	88.31%	2,568
San Luis Obispo Sheriff's Dept.	377	415	38	10.1%	1.3%	89.61%	2,606
Monterey Sheriff's Dept.	1,096	1,129	33	3.0%	1.1%	90.75%	2,639
Contra Costa Sheriff's Dept.	1,627	1,658	31	1.9%	1.1%	91.82%	2,670
San Diego WorkFurlough	192	223	31	16.1%	1.1%	92.88%	2,701
Napa Corrections Dept.	187	217	30	16.0%	1.0%	93.91%	2,731
Merced Sheriff's Dept.	503	526	23	4.6%	0.8%	94.70%	2,754
Tehama Sheriff's Dept.	194	215	21	10.8%	0.7%	95.43%	2,775
Santa Cruz Sheriff's Dept.	584	604	20	3.4%	0.7%	96.11%	2,795
Lake Sheriff's Dept.	176	194	18	10.2%	0.6%	96.73%	2,813
San Joaquin Sheriff's Dept.	1,211	1,228	17	1.4%	0.6%	97.32%	2,830
Plumas Sheriff's Dept.	45	60	15	33.3%	0.5%	97.83%	2,845
Glenn Sheriff's Dept.	67	81	14	20.9%	0.5%	98.31%	2,859
El Dorado Sheriff's Dept.	319	330	11	3.4%	0.4%	98.69%	2,870
Sutter Sheriff's Dept.	235	246	11	4.7%	0.4%	99.07%	2,881
Stanislaus Sheriff's Dept.	1,058	1,068	10	0.9%	0.3%	99.42%	2,891
Alameda Sheriff's Dept.	4,090	4,096	6	0.1%	0.2%	99.62%	2,897
Inyo Sheriff's Dept.	62	66	4	6.5%	0.1%	99.76%	2,901
Sierra Sheriffs Dept.	-	3	3		0.1%	99.86%	2,904
Tuolumne Sheriff's Dept.	116	118	2	1.7%	0.1%	99.93%	2,906
Trinity Sheriff's Dept.	50	52	2	4.0%	0.1%	100.00%	2,908
San Benito Sheriff's Dept.	103	103	-	0.0%	0.0%		
Mariposa Sheriff's Dept.	50	50	-	0.0%	0.0%		
Shasta Sheriff's Dept.	338	337	(1)	-0.3%	0.1%	0.13%	(1)
Kern Sheriff's Dept.	2,020	2,018	(2)	-0.1%	0.3%	0.38%	(3)
Colusa Sheriff's Dept.	75	72	(3)	-4.0%	0.4%	0.75%	(6)
Siskiyou Sheriff's Dept.	85	81	(4)	-4.7%	0.5%	1.25%	(10)
Modoc Sheriff's Dept.	37	31	(6)	-16.2%	0.8%	2.00%	(16)
Del Norte Sheriff's Dept.	101	93	(8)	-7.9%	1.0%	3.00%	(24)
Mono Sheriff's Dept.	30	22	(8)	-26.7%	1.0%	4.01%	(32)
Calaveras Sheriff's Dept.	54	45	(9)	-16.7%	1.1%	5.13%	(41)
Scapular House	228	216	(12)	-5.3%	1.5%	6.63%	(53)
Butte Sheriff's Dept.	406	393	(13)	-3.2%	1.6%	8.26%	(66)
Kings Sheriff's Dept.	345	332	(13)	-3.8%	1.6%	9.89%	(79)
Mendocino Sheriff's Dept.	235	222	(13)	-5.5%	1.6%	11.51%	(92)
Amador Sheriff's Dept.	56	39	(17)	-30.4%	2.1%	13.64%	(109)
Solano Sheriff's Dept.	863	844	(19)	-2.2%	2.4%	16.02%	(128)
Placer Sheriff's Dept.	455	436	(19)	-4.2%	2.4%	18.40%	(147)
Riverside Sheriff's Dept.	2,701	2,679	(22)	-0.8%	2.8%	21.15%	(169)
Nevada Sheriff's Dept.	154	130	(24)	-15.6%	3.0%	24.16%	(193)
Casa Oasis	25	-	(25)	-100.0%	3.1%	27.28%	(218)
Santa Barbara Sheriff's Dept.	973	943	(30)	-3.1%	3.8%	31.04%	(248)
San Diego Probation Dept.	342	311	(31)	-9.1%	3.9%	34.92%	(279)
Marin Sheriff's Dept.	295	252	(43)	-14.6%	5.4%	40.30%	(322)
Madera Corrections Dept.	355	309	(46)	-13.0%	5.8%	46.06%	(368)
Ventura County Work Furlough	187	134	(53)	-28.3%	6.6%	52.69%	(421)
Yuba County Sheriff's Dept.	401	293	(108)	-26.9%	13.5%	66.21%	(529)
Tulare Sheriff's Dept.	1,273	1,164	(109)	-8.6%	13.6%	79.85%	(638)
Santa Clara Dept. of Correction	4,688	4,527	(161)	-3.4%	20.2%	100.00%	(799)
	77,530	79,639	2,109				
		Total increase	2,908				
		Total decrease	(799)				

Note: Totals subject to slight variations due to rounding

Interpretation of Table:
JAIL POPULATIONS: 3rd Quarter '97 versus 3rd Quarter '98

This table:

- summarizes the ADP results for the 64 jurisdictions in California reporting data from Type II, III, and IV jails;
- summarizes jurisdiction ADP results for the most recent quarter (Column B);
- compares jurisdiction ADP for the most recent quarter with the same quarter last year (Column A);
- ranks the jurisdictions in terms of gains or losses in ADP from high to low (Column C);
- lists the percentage growth or decline in ADP for each jurisdiction (Column D);
- lists the percentage of the overall State increase or decrease in ADP that is represented by each jurisdiction (Column E);
- lists, by jurisdiction, the cumulative percentage increase and decrease in the State ADP starting with the jurisdiction with the highest percentage of the increase and proceeding to the jurisdiction with the highest percentage of the decrease (Column F);
- lists, by jurisdiction, the cumulative total increase and decrease in the State ADP starting with the jurisdiction with the highest increase and proceeding to the jurisdiction with the biggest decrease (Column G); and
- lists the jurisdictions that experienced decreases in their ADP as shaded.

Some important conclusions from this table are:

1. The two numbers at the bottom indicate the "total increase" in ADP (in this case 2,908) and "total decrease" in ADP (799). In other words, the jurisdictions experiencing increases had a total increase of 2,908 ADP; and the jurisdictions experiencing decreases had a total decrease of 799 ADP. Subtracting 799 from 2,908 produces the overall increase of 2,109 between the third quarter of 1997 and the third quarter of 1998.
2. The Los Angeles ADP increase of 635 is 21.8% of the total increase of 2,109. Thirty-six jurisdictions had increases (down to Trinity Sheriff's Department). When you get to Trinity Sheriff's Department, you have accounted for 100% of the increases (100% of the cumulative total of 2,908).
3. Jurisdictions that experienced a decrease in ADP are listed from smallest decrease to largest decrease (Shasta Sheriff's Department to Santa Clara Department of Corrections). When you get to the bottom of the table, you have accounted for 100% of the total decreases of 799 inmates.
4. The cumulative percentage of ADP increase for the top five jurisdictions (Los Angeles Sheriff's Department to Ventura Sheriff's Department) is 59.7%. In other words, five jurisdictions accounted for almost 60% of the ADP increase.
5. In the last 12 months the ADP has increased by 2.7%.

BOARD OF CORRECTIONS JAIL PROFILE SURVEY

Reporting Period: April to June, 1998

County Jail Populations

ADP ^a	80,391 ^b
Holding Areas	1,060
Average "Under the Roof" ^c	81,451 ^d
Highest One Day Count	83,911 ^e

County Jail Populations

Felony	57,270
Misdemeanor	23,121
Total	80,391
Non-Sentenced Males	39,831
Non-Sentenced Females	5,744
Sentenced Males	29,465
Sentenced Females	5,351
Total	80,391
Maximum Security Inmates	35,185
Medium Security Inmates	20,424
Minimum Security Inmates	24,782
Total	80,391

Inmates From Other Jurisdictions

Housed on Federal Contract	3,569
Housed on Contract with CDC	2,013
From Other Counties on Contract	25
Awaiting Transport	1,204
Total	6,811

Special Use Beds

Medical Beds	0
Mental Health Beds	0

Released Per Month Due to Lack of Space

Pretrial Release	7,301 ^f
Early Release	12,373 ^f
Total	19,674

Inmates with 2 and 3 Strikes

2 Strike Inmates	2,889 ^g
3 Strike Inmates	1,877 ^g
Total	4,766

Unservd Warrants

Felony Warrants	237,523 ^g
Misdemeanor Warrants	2,346,945 ^g
Total	2,584,468

Other Jail Profile Survey Variables

Bookings Per Month	100,847 ^f
Juveniles in Custody	156 ^f
Criminal / Illegal Aliens	8,641
Assaults On Staff	206

- a. The Average Daily Population for all jurisdictions (excluding Type I's) does not include inmates in holding areas.
- b. Unless otherwise indicated, the numbers reported are the average across the days in the quarter.
- c. "Under the Roof" is the sum of the Average Daily Population plus the average daily number of inmates in Holding Areas.
- d. Totals may not be the exact sum of the subtotals due to rounding.
- e. The sum of all Highest One Day inmate population counts from all jurisdictions.
- f. These data are collected on a monthly basis, this figure is an average of the total numbers collected each month during this quarter.
- g. These data are one-day snapshots collected at the end of the quarter.