

JAIL PROFILE SURVEY

2000, 2nd QUARTER SURVEY RESULTS

FACILITIES STANDARDS AND OPERATIONS DIVISION

BOARD OF CORRECTIONS

STATE OF CALIFORNIA
600 Bercut Drive
Sacramento, CA 95814-0185
(916) 445-5073
www.bdcorr.ca.gov

JAIL PROFILE SURVEY

EXPLANATION OF RESULTS

The following pages contain the Jail Profile Survey results for the second quarter of 2000. Page 1 contains the quarterly totals based upon the monthly and quarterly data submitted to us by the participating jurisdictions. Page 2 and 3 show the trend data for variables we have been tracking for the last ten years. The remainder of this page provides explanations and clarifications of the data presented.

Page 1

- Unless otherwise noted, "projected totals" are based upon the average per day for the variable in question. For example, there were an average of 75,314 inmates per day in local jails (excluding Type I's) during the three-month span of April to June 2000.
- For some variables, we did not receive data from all jurisdictions. We compute the percentage of the ADP which were housed in the jurisdictions that did supply us with data. For example, 96% of the jurisdictions, representing 96% of the state's ADP, indicated the number of felony inmates in their facilities. We then projected what the statewide number of felony inmates would have been if we received felony inmate data from the counties that house the remaining 4% of the inmates.
- The number for "Bookings" is the average of the monthly totals for April, May and June.
- For the following variables, the numbers presented are the totals as of the mid-quarter (i.e., May 15, 2000): Pretrial Release, Early Release, 2 and 3 Strikes, Felony Warrants, Misdemeanor Warrants, Juveniles in Custody and Undocumented Aliens.
- Assaults is the total number of serious inmate assaults on staff (resulting in a crime report), statewide, during the second quarter of 2000.

Pages 2 and 3

- The data in the 10-Year Summary tables are based upon survey data which the Board has gathered since the early 1980's.
- Prior to 1995, yearly averages were reported to the Board on an annual basis. Yearly averages from 1996 on have been the average across the 12 calendar months. In 1995, the yearly figure reported is the fourth quarter average, since we do not have data from the first three quarters.

JAIL PROFILE SURVEY

CALIFORNIA COUNTY JAILS - FOR MONTHS OF APRIL - JUNE 2000

	<u>Projected Total</u>
Average Daily Population (ADP)	
Highest One Day Count ^a	78,932 ^b
ADP	75,314 ^c
Holding Areas	993
Average "Under the Roof" ^d	76,307 ^e

	<u>Projected Total</u>
Inmates from Other Jurisdictions	
Inmates Housed on Federal Contract	3,786
Inmates Housed on Contract with CDC	2,278
Inmates from Other Counties on Contract	7
Inmates Awaiting Transport	1,132
Total	7,203

Categories of Inmates	
Felony	51,672
Misdemeanor	22,676
Unspecified	965
Total	75,314
Non-Sentenced Males	39,270
Non-Sentenced Females	5,528
Sentenced Males	26,064
Sentenced Females	4,452
Total	75,314
Maximum Security Inmates	34,581
Medium Security Inmates	21,092
Minimum Security Inmates	19,641
Unspecified	0
Total	75,314

Number of People Released Per Month Due to Lack of Space	
Pretrial Release	4,679
Early Release	11,188
Total	15,867^e

Inmates with 2 and 3 Strikes	
2 Strike Inmates	3,071 ^f
3 Strike Inmates	1,880 ^f
Total	4,951^e

Unserviced Warrants	
Felony Warrants	256,978 ^f
Misdemeanor Warrants	2,049,812 ^f
Total	2,306,790

Special Use Beds	
Medical Beds	875
Mental Beds	2,980

Other Jail Profile Survey Variables

Bookings per Month	99,026 ^f
Juveniles in Custody	111 ^f
Undocumented Aliens	9,723 ^f
Assaults	229 ^f

^a The highest one day inmate population counts in the 64 jurisdictions.

^b Unless otherwise indicated, the numbers reported in this table are an average across the days covered by the report.

^c The Average Daily Population in all jurisdictions is for the days covered by the report.

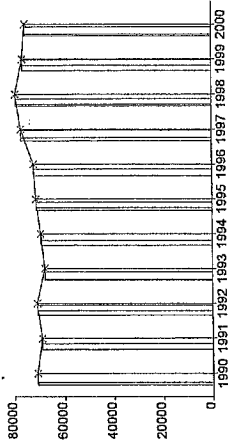
^d The term "Under the Roof" is the sum of the Average Daily Population plus the inmates in Holding Areas.

^e Grand totals may not add up exactly to the column totals due to rounding.

^f This number is the average for the quarters represented by the span of time covered by this report.

Average Daily Population

10 Year Summary									
1990	1991	1992	1993	1994	1995	1996	1997	1998	1999
70,845	68,923	70,853	67,576	69,233	71,107	72,029	76,906	79,149	76,312



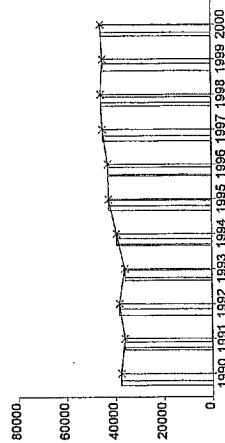
The ADP peaked at 79,149 inmates in 1998. Since then, the ADP has decreased and has hovered in a range between 75,000 and 77,000 inmates. The ADP for the 2nd Quarter of 2000 was 75,314 inmates. This is a slight increase over the 1st Quarter, and a decrease of about 900 inmates when compared with the 2nd Quarter of 1999. Time will tell how the conflict between the inexorable increase in the State population (with the resulting increase in the demands on the jail system), and the limiting factor of jail capacity (currently about 71,000 Board Rated Capacity beds) will play out.

Quarterly Results

	Q1	Q2	Q3	Q4	Average
1999	76,567	76,199	76,935	75,548	76,312
2000	75,070	75,314			75,192

Non-Sentenced ADP

10 Year Summary									
1990	1991	1992	1993	1994	1995	1996	1997	1998	1999
37,630	36,064	38,110	35,899	39,122	42,237	42,541	44,590	45,303	44,489



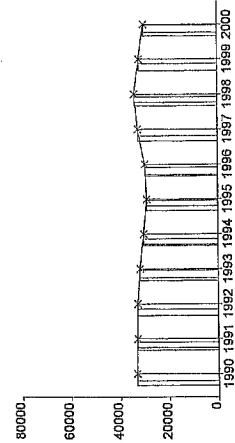
The non-sentenced ADP reached the highest total ever in the 1st Quarter of 2000 (45,880 inmates). The number decreased in the 2nd Quarter to 44,798. It is significant that, even though the 2nd Quarter 2000 total ADP is about 900 inmates lower than the 2nd Quarter of 1999, the non-sentenced population has increased by over 700 inmates in that same time span.

Quarterly Results

	Q1	Q2	Q3	Q4	Average
1999	44,087	44,043	45,048	44,777	44,489
2000	45,880	44,798			45,339

Sentenced ADP

10 Year Summary									
1990	1991	1992	1993	1994	1995	1996	1997	1998	1999
33,215	32,859	32,743	31,677	30,142	28,870	29,488	32,316	33,846	31,823



Although the non-sentenced ADP for this quarter is within about 500 inmates of the peak number of 45,303 inmates in 1998, the sentenced ADP is down by over 3,000 inmates from the 1998 peak (33,846 versus 30,516 inmates). Therefore, 87% of the decline in ADP from 1998 to the present is due to the decline in sentenced inmates.

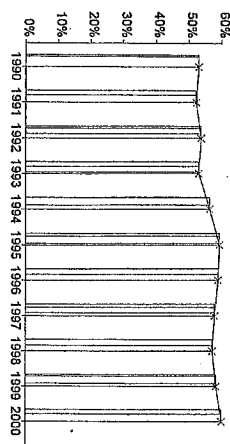
Quarterly Results

	Q1	Q2	Q3	Q4	Average
1999	32,480	32,156	31,886	30,772	31,823
2000	29,190	30,516			29,853

Percentage Non-Sentenced

10 Year Summary									
1990	1991	1992	1993	1994	1995	1996	1997	1998	1999
53%	52%	54%	53%	57%	59%	59%	58%	57%	58%

Quarterly Results					
	Q1	Q2	Q3	Q4	Average
1999	58	58	59	59	58
2000	61	59			60

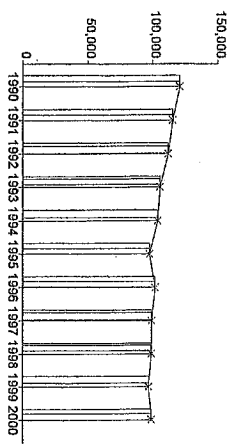


The percentage of non-sentenced inmates has ranged from 57% in 1994 to 61% in the 1st Quarter of 2000. This quarter the percentage of non-sentenced inmates is midway between the two at 59%. The general trend over the last two decades is for the non-sentenced population to constitute a steadily increasing percentage of the jail population.

Average Number of Persons Booked Per Month

10 Year Summary									
1990	1991	1992	1993	1994	1995	1996	1997	1998	1999
120,716	115,313	112,009	105,593	103,996	97,589	101,939	99,180	98,915	96,834

Quarterly Results					
	Q1	Q2	Q3	Q4	Average
1999	96,666	98,017	100,349	92,302	96,834
2000	99,151	98,911			99,031

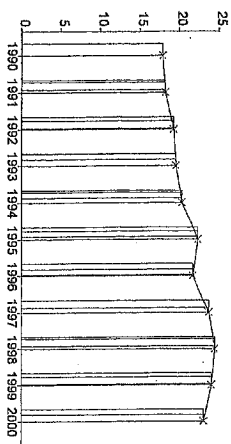


The average number of persons booked per month this quarter is slightly lower than last quarter, but about 1% higher than a year ago. After a two-year decline, bookings per month exceed the 1999 rate by over 2,000 per month.

Average Length of Stay

10 Year Summary									
1990	1991	1992	1993	1994	1995	1996	1997	1998	1999
17.9	18.2	19.2	19.5	20.3	22.3	21.6	23.7	24.4	24.0

Quarterly Results					
	Q1	Q2	Q3	Q4	Average
1999	23.8	23.6	23.5	25.1	24.0
2000	23.0	23.1			23.1



The average length of inmate stay in jails has remained in the range of 23 to 25 days since 1997. As of the 2nd Quarter of 2000, the average length of stay (23.1 days) is slightly lower than the 1997 rate of 23.7 days. This reported average length of stay is lower than it would be if needed jail space were available. An average of 11,188 inmates were released early in the 2nd Quarter of 2000 due to lack of jail space.

**AVERAGE DAILY POPULATION
NON-SENTENCED/SENTENCED MALE/FEMALE
CALIFORNIA COUNTY JAILS - FOR MONTHS OF APRIL - JUNE 2000**

Jurisdiction	Non-sentenced				Sentenced				Total		
	Male		Female		Male		Female				
	#	%	#	%	#	%	#	%			
1. Alameda Sheriff's Dept.	2,804	91%	262	9%	911	87%	141	13%	1,052	26%	4,117
2. Amador Sheriff's Dept.	18	78%	5	22%	17	76%	5	24%	22	49%	46
3. Butte Sheriff's Dept.	282	87%	41	13%	119	84%	23	16%	142	31%	464
4. Calaveras Sheriff's Dept.	20	86%	3	14%	20	93%	1	7%	21	48%	44
5. Colusa Sheriff's Dept.	26	85%	5	15%	27	91%	3	9%	29	49%	60
6. Contra Costa Sheriff's Dept.	912	88%	127	12%	503	92%	45	8%	547	35%	1,586
7. Del Norte Sheriff's Dept.	58	89%	7	11%	38	80%	9	20%	48	42%	112
8. El Dorado Sheriff's Dept.	106	88%	15	12%	114	84%	21	16%	135	53%	256
9. Fresno Sheriff's Dept.	1,626	90%	176	10%	521	89%	62	11%	583	24%	2,385
10. Glenn Sheriff's Dept.	56	66%	29	34%	21	90%	2	10%	23	21%	108
11. Humboldt Sheriff's Dept.	211	88%	28	12%	98	86%	16	14%	114	32%	353
12. Imperial Sheriff's Dept.	162	50%	162	50%	162	50%	162	50%	325	50%	649
13. Inyo Sheriff's Dept.	25	89%	3	11%	33	83%	7	17%	40	59%	68
14. Kern Sheriff's Dept.	1,167	88%	153	12%	502	70%	220	30%	722	35%	2,042
15. Kings Sheriff's Dept.	133	89%	17	11%	195	82%	44	18%	239	62%	388
16. Lake Sheriff's Dept.	84	80%	21	20%	107	86%	17	14%	124	54%	228
17. Lassen Sheriff's Dept.	48	92%	4	8%	40	71%	17	29%	57	52%	110
18. Los Angeles Sheriff's Dept.	9,679	89%	1,152	11%	7,286	88%	1,022	12%	8,308	43%	19,138
19. Madera Corrections Dept.	139	90%	16	10%	134	92%	11	8%	145	48%	300
20. Marin Sheriff's Dept.	195	84%	36	16%	28	71%	11	29%	39	15%	270
21. Mariposa Sheriff's Dept.	17	84%	3	16%	14	87%	2	13%	16	45%	36
22. Mendocino Sheriff's Dept.	133	93%	11	7%	98	89%	13	11%	110	43%	254
23. Merced Sheriff's Dept.	314	89%	37	11%	189	91%	18	9%	207	37%	559
24. Modoc Sheriff's Dept.	7	88%	1	13%	11	69%	5	31%	16	67%	24
25. Mono Sheriff's Dept.	9	85%	2	15%	14	86%	2	14%	16	61%	26
26. Monterey Sheriff's Dept.	508	91%	52	9%	346	87%	50	13%	396	41%	955
27. Napa Corrections Dept.	139	89%	17	11%	57	88%	8	12%	65	29%	220
28. Nevada Sheriff's Dept.	76	94%	5	6%	64	83%	13	17%	77	49%	158
29. Oakland Police Dept.	103	86%	17	14%	0	0%	0	0%	0	0%	120
30. Orange Sheriff's Dept.	1,801	89%	219	11%	2,322	85%	404	15%	2,726	57%	4,745
31. Placer Sheriff's Dept.	216	90%	24	10%	172	83%	36	17%	208	46%	448
32. Plumas Sheriff's Dept.	18	86%	3	14%	13	80%	3	20%	17	44%	38
33. Riverside Sheriff's Dept.	1,626	89%	209	11%	679	84%	125	16%	804	30%	2,639
34. Sacramento Sheriff's Dept.	1,511	82%	337	18%	1,111	86%	187	14%	1,298	41%	3,146

**AVERAGE DAILY POPULATION
NON-SENTENCED/SENTENCED MALE/FEMALE
CALIFORNIA COUNTY JAILS - FOR MONTHS OF APRIL - JUNE 2000**

	Non-sentenced				Sentenced				Total
	Male	Female	Total	%	Male	Female	Total	%	
Jurisdiction	#	%	#	%	#	%	#	%	#
35. San Benito Sheriff's Dept.	60	90%	7	10%	38	93%	3	7%	41
36. San Bernardino Sheriff's Dept.	3,210	86%	544	14%	1,163	85%	213	15%	1,376
37. San Diego Probation Dept.	0	0%	0	0%	222	100%	0	0%	222
38. San Diego Sheriff's Dept.	2,447	85%	430	15%	1,644	83%	338	17%	1,982
39. San Diego Work-Furlough	1	50%	1	50%	186	82%	42	18%	228
40. San Francisco Sheriff's Dept.	1,512	88%	213	12%	147	85%	27	15%	174
41. San Joaquin Sheriff's Dept.	469	87%	68	13%	582	83%	115	17%	698
42. San Luis Obispo Sheriff's Dept.	112	90%	13	10%	201	89%	26	11%	226
43. San Mateo Sheriff's Dept.	505	92%	44	8%	513	85%	88	15%	601
44. Santa Ana Police Dept.	328	86%	55	14%	50	99%	0	1%	51
45. Santa Barbara Sheriff's Dept.	363	88%	52	12%	418	89%	49	11%	467
46. Santa Clara Dept. of Correction	2,142	89%	271	11%	1,545	86%	249	14%	1,794
47. Santa Clara Probation Dept.	0	0%	0	0%	241	82%	52	18%	293
48. Santa Cruz Sheriff's Dept.	217	89%	28	11%	317	88%	44	12%	361
49. Scapular House	0	0%	0	0%	180	90%	20	10%	200
50. Shasta Sheriff's Dept.	211	86%	34	14%	103	67%	50	33%	152
51. Sierra Sheriff's Dept.	3	97%	0	3%	1	94%	0	6%	1
52. Siskiyou Sheriff's Dept.	48	83%	10	17%	26	92%	2	8%	29
53. Solano Sheriff's Dept.	485	86%	76	14%	230	88%	30	12%	260
54. Sonoma Sheriff's Dept.	492	88%	69	12%	428	87%	65	13%	493
55. Stanislaus Sheriff's Dept.	559	88%	78	12%	356	83%	75	17%	432
56. Sutter Sheriff's Dept.	114	83%	24	17%	60	82%	14	18%	73
57. Tehama Sheriff's Dept.	97	90%	11	10%	84	92%	8	8%	92
58. Trinity Sheriff's Dept.	15	80%	4	20%	21	82%	5	18%	25
59. Tulare Sheriff's Dept.	493	79%	128	21%	466	86%	75	14%	541
60. Tuolumne Sheriff's Dept.	47	87%	7	13%	51	84%	10	16%	61
61. Ventura County Work-Furlough	0	0%	0	0%	101	78%	29	22%	129
62. Ventura Sheriff's Dept.	624	87%	91	13%	593	86%	96	14%	689
63. Yolo Sheriff's Dept.	242	83%	49	17%	81	83%	16	17%	97
64. Yuba County Sheriff's Dept.	248	91%	25	9%	48	89%	6	11%	54
Statewide	39,270	88%	5,528	12%	26,064	85%	4,452	15%	30,516
									75,314

** Jurisdictions which have not yet been updated for the month(s) in question
Column totals may not add up to the grand total due to rounding

Jail Populations: Quarter 2, 1999 Versus Quarter 2, 2000

Jurisdiction	Qtr 2, 1999	Qtr 2, 2000	Qtr 2, 2000 Minus Qtr 2, 1999	Qtr 2, 1999 To Qtr 2, 2000 % +/-	% of Total Increase or Decrease	Cum %	Cum Total
San Bernardino Sheriff's Dept.	4,859	5,129	270	5.6%	19.6%	19.62%	270
Fresno Sheriff's Dept.	2,253	2,385	132	5.9%	9.6%	29.22%	402
Kings Sheriff's Dept.	324	388	64	19.8%	4.7%	33.87%	466
Shasta Sheriff's Dept.	335	397	62	18.5%	4.5%	38.37%	528
San Diego WorkFurlough	170	230	60	35.3%	4.4%	42.73%	588
Stanislaus Sheriff's Dept.	1,015	1,069	54	5.3%	3.9%	46.66%	642
Placer Sheriff's Dept.	396	448	52	13.1%	3.8%	50.44%	694
Contra Costa Sheriff's Dept.	1,535	1,586	51	3.3%	3.7%	54.14%	745
Imperial Sheriff's Dept.	599	650	51	8.5%	3.7%	57.85%	796
San Diego Sheriff's Dept.	4,812	4,859	47	1.0%	3.4%	61.26%	843
Mendocino Sheriff's Dept.	207	254	47	22.7%	3.4%	64.68%	890
Lake Sheriff's Dept.	181	228	47	26.0%	3.4%	68.10%	937
San Joaquin Sheriff's Dept.	1,189	1,234	45	3.8%	3.3%	71.37%	982
Tulare Sheriff's Dept.	1,119	1,163	44	3.9%	3.2%	74.56%	1,026
Butte Sheriff's Dept.	424	464	40	9.4%	2.9%	77.47%	1,066
Humboldt Sheriff's Dept.	322	353	31	9.6%	2.3%	79.72%	1,097
Kern Sheriff's Dept.	2,013	2,043	30	1.5%	2.2%	81.90%	1,127
Santa Ana Police Dept.	404	434	30	7.4%	2.2%	84.08%	1,157
Santa Cruz Sheriff's Dept.	576	605	29	5.0%	2.1%	86.19%	1,186
Napa Corrections Dept.	193	221	28	14.5%	2.0%	88.23%	1,214
Madera Corrections Dept.	277	301	24	8.7%	1.7%	89.97%	1,238
Solano Sheriff's Dept.	801	822	21	2.6%	1.5%	91.50%	1,259
Merced Sheriff's Dept.	538	558	20	3.7%	1.5%	92.95%	1,279
Santa Clara Probation Dept.	274	294	20	7.3%	1.5%	94.40%	1,299
Antura Sheriff's Dept.	1,385	1,404	19	1.4%	1.4%	95.78%	1,318
Del Norte Sheriff's Dept.	100	113	13	13.0%	0.9%	96.73%	1,331
Trinity Sheriff's Dept.	35	45	10	28.6%	0.7%	97.46%	1,341
Glenn Sheriff's Dept.	100	109	9	9.0%	0.7%	98.11%	1,350
Scapular House	192	200	8	4.2%	0.6%	98.69%	1,358
Yuba Sheriff's Dept.	320	326	6	1.9%	0.4%	99.13%	1,364
Nevada Sheriff's Dept.	153	158	5	3.3%	0.4%	99.49%	1,369
Amador Sheriff's Dept.	42	45	3	7.1%	0.2%	99.71%	1,372
Mono Sheriff's Dept.	23	26	3	13.0%	0.2%	99.93%	1,375
San Benito Sheriff's Dept.	106	107	1	0.9%	0.1%	100.00%	1,376
Sierra Sheriff's Dept.	4	4	0	0.0%	0.0%	100.00%	1,376
Tuolumne Sheriff's Dept.	116	114	-2	-1.7%	0.1%	0.08%	-2
Siskiyou Sheriff's Dept.	89	86	-3	-3.4%	0.1%	0.21%	-5
Colusa Sheriff's Dept.	67	59	-8	-11.9%	0.3%	0.55%	-13
Inyo Sheriff's Dept.	77	68	-9	-11.7%	0.4%	0.92%	-22
Calaveras Sheriff's Dept.	54	44	-10	-18.5%	0.4%	1.34%	-32
Modoc Sheriff's Dept.	36	24	-12	-33.3%	0.5%	1.85%	-44
Monterey Sheriff's Dept.	970	956	-14	-1.4%	0.6%	2.43%	-58
Plumas Sheriff's Dept.	52	38	-14	-26.9%	0.6%	3.02%	-72
Marin Sheriff's Dept.	285	270	-15	-5.3%	0.6%	3.65%	-87
Tehama Sheriff's Dept.	215	200	-15	-7.0%	0.6%	4.28%	-102
Sutter Sheriff's Dept.	227	211	-16	-7.0%	0.7%	4.95%	-118
Lassen Sheriff's Dept.	127	110	-17	-13.4%	0.7%	5.66%	-135
Yolo Sheriff's Dept.	407	388	-19	-4.7%	0.8%	6.46%	-154
Mariposa Sheriff's Dept.	56	36	-20	-35.7%	0.8%	7.30%	-174
Santa Barbara Sheriff's Dept.	902	882	-20	-2.2%	0.8%	8.14%	-194
San Luis Obispo Sheriff's Dept.	376	351	-25	-6.6%	1.0%	9.19%	-219
Ventura Work/Furlough	155	129	-26	-16.8%	1.1%	10.28%	-245
Sonoma Sheriff's Dept.	1,098	1,054	-44	-4.0%	1.8%	12.12%	-289

Jail Populations: Quarter 2, 1999 Versus Quarter 2, 2000

Jurisdiction	Qtr 2, 1999	Qtr 2, 2000	Qtr 2, 2000 Minus Qtr 2, 1999	Qtr 2, 1999 To Qtr 2, 2000 % +/-	% of Total Increase or Decrease	Cum %	Cum Total
Riverside Sheriff's Dept	2,697	2,639	-58	-2.2%	2.4%	14.56%	-347
San Diego Probation Dept	282	223	-59	-20.9%	2.5%	17.03%	-406
El Dorado Sheriff's Dept	317	255	-62	-19.6%	2.6%	19.63%	-468
San Mateo Sheriff's Dept	1,226	1,151	-75	-6.1%	3.1%	22.78%	-543
Sacramento Sheriff's Dept	3,222	3,146	-76	-2.4%	3.2%	25.96%	-619
Orange Sheriff's Dept	4,839	4,745	-94	-1.9%	3.9%	29.91%	-713
Alameda Sheriff's Dept	4,305	4,118	-187	-4.3%	7.8%	37.75%	-900
Santa Clara Corrections Dept	4,431	4,207	-224	-5.1%	9.4%	47.15%	-1,124
San Francisco Sheriff's Dept	2,138	1,899	-239	-11.2%	10.0%	57.17%	-1,363
Los Angeles Sheriff's Dept	20,159	19,138	-1,021	-5.1%	42.8%	100.00%	-2,384
	76,201	75,193	-1,008				
		Total Increase:	1,376				
		Total Decrease:	-2,384				

Note: Totals subject to slight variation due to rounding

Interpretation of Table:
JAIL POPULATIONS: 2nd Quarter '99 versus 2nd Quarter 2000

This table:

- summarizes the ADP results for the 64 jurisdictions in California reporting data from Type II, III, and IV jails;
- summarizes jurisdiction ADP results for the most recent quarter (Column B);
- compares jurisdiction ADP for the most recent quarter with the same quarter last year (Column A);
- ranks the jurisdictions in terms of gains or losses in ADP from high to low (Column C);
- lists the percentage growth or decline in ADP for each jurisdiction (Column D);
- lists the percentage of the overall State increase or decrease in ADP that is represented by each jurisdiction (Column E);
- lists, by jurisdiction, the cumulative percentage increase and decrease in the State ADP starting with the jurisdiction with the highest percentage of the increase and proceeding to the jurisdiction with the highest percentage of the decrease (Column F);
- lists, by jurisdiction, the cumulative total increase and decrease in the State ADP, starting with the jurisdiction with the highest increase and proceeding to the jurisdiction with the biggest decrease (Column G); and
- lists the jurisdictions that experienced decreases in their ADP as shaded.

Some important conclusions from this table are:

1. The two numbers at the bottom indicate the "total increase" in ADP (1,499) and "total decrease" in ADP (2,383). In other words, the jurisdictions experiencing increases had a total increase of 1,499 ADP; and the jurisdictions experiencing decreases had a total decrease of 2,383 ADP. Subtracting 1,499 from 2,383 produces the overall decrease of 884 between the second quarter of 1999 and the second quarter of 2000
2. The San Bernardino ADP increase of 271 is 18.1% of the total increase of 1,499. Thirty-five jurisdictions had increases (down to San Benito Sheriff's Department). When you get to San Benito Sheriff's Department, you have accounted for 100% of the increases (100% of the cumulative total of 1,499).
3. Jurisdictions that experienced a decrease in ADP are listed from smallest decrease to largest decrease (Sierra Sheriff's Department to Los Angeles Sheriff's Department). When you get to the bottom of the table, you have accounted for 100% of the total decreases of 2,383 inmates.
4. The cumulative percentage of ADP increase for the top five jurisdictions (San Bernardino Sheriff's Department to Shasta Sheriff's Department) is 43.37%. In other words, five jurisdictions accounted for about 43% of the ADP increase.

BOARD OF CORRECTIONS JAIL PROFILE SURVEY

Reporting Period: January to March, 2000

County Jail Populations

ADP ^a	75,070 ^b
Holding Areas	1,206
Average "Under the Roof" ^c	76,276 ^d
Highest One Day Count	79,087 ^e

Special Use Beds

Medical Beds	0
Mental Health Beds	0

County Jail Populations

Felony	53,389
Misdemeanor	21,681
Total	75,070
Non-Sentenced Males	40,278
Non-Sentenced Females	5,603
Sentenced Males	25,011
Sentenced Females	4,178
Total	75,070
Maximum Security Inmates	35,283
Medium Security Inmates	19,594
Minimum Security Inmates	20,193
Total	75,070

Released Per Month Due to Lack of Space

Pretrial Release	4,613 ^f
Early Release	10,588 ^f
Total	15,201

Inmates with 2 and 3 Strikes

2 Strike Inmates	2,915 ^g
3 Strike Inmates	1,993 ^g
Total	4,908

Unservd Warrants

Felony Warrants	248,726 ^g
Misdemeanor Warrants	2,084,443 ^g
Total	2,333,169

Inmates From Other Jurisdictions

Housed on Federal Contract	4,239
Housed on Contract with CDC	2,080
From Other Counties on Contract	14
Awaiting Transport	1,377
Total	7,710

Other Jail Profile Survey Variables

Bookings Per Month	99,523 ^f
Juveniles in Custody	95 ^f
Criminal / Illegal Aliens	9,283
Assaults On Staff	234

- a. The Average Daily Population for all jurisdictions (excluding Type I's) does not include inmates in holding areas.
- b. Unless otherwise indicated, the numbers reported are the average across the days in the quarter.
- c. "Under the Roof" is the sum of the Average Daily Population plus the average daily number of inmates in Holding Areas.
- d. Totals may not be the exact sum of the subtotals due to rounding.
- e. The sum of all Highest One Day inmate population counts from all jurisdictions.
- f. These data are collected on a monthly basis, this figure is an average of the total numbers collected each month during this quarter.
- g. These data are one-day snapshots collected at the end of the quarter.



BOARD OF CORRECTIONS 600 BERKUT DRIVE, SACRAMENTO, CA 95814 916/445-5073 www.bdcorr.ca.gov

STATE OF CALIFORNIA
GRAY DAVIS, GOVERNOR

