

JAIL PROFILE SURVEY

1998, 2nd QUARTER SURVEY RESULTS

FACILITIES STANDARDS AND OPERATIONS DIVISION

BOARD OF CORRECTIONS

STATE OF CALIFORNIA
600 Bercut Drive
Sacramento, CA 95814-0185
(916) 445-5073

JAIL PROFILE SURVEY

EXPLANATION OF RESULTS

The following pages contain the Jail Profile Survey results for the second quarter of 1998. Page 1 contains the quarterly totals based upon the monthly and quarterly data submitted to us by the participating jurisdictions. Page 2 and 3 show the trend data for variables we have been tracking for the last ten years. The remainder of this page provides explanations and clarifications of the data presented.

Page 1

- Unless otherwise noted, "projected totals" are based upon the average per day for the variable in question. For example, there were an average of 80,391 inmates per day in local jails (excluding Type I's) during the three month span of April to June 1998.
- For some variables, we did not receive data from all jurisdictions. We compute the percentage of the ADP which were housed in the jurisdictions that did supply us with data. For example, 95.95% of the jurisdictions indicated the number of felony inmates in their facilities. In these cases, we projected what the statewide number of felony inmates would have been if we had complete data from all the participating jurisdictions.
- The number for "Bookings" is the average of the monthly totals for April, May and June.
- For the following variables, the numbers presented are the totals as of the mid-quarter (i.e., May 15, 1998); Pretrial Release, Early Release, 2 and 3 Strikes, Felony Warrants, Misdemeanor Warrants, Juveniles in Custody and Undocumented Aliens.
- Assaults is the total number of serious inmate assaults on staff (resulting in a crime report), statewide, during the second quarter of 1998.

Pages 2 and 3

- The data in the 10-Year Summary tables are based upon survey data which the Board has gathered since the early 1980's.
- Prior to 1995, yearly averages were reported to the Board on an annual basis. Yearly averages from 1996 on have been the average across the 12 calendar months. In 1995, the yearly figure reported is the fourth quarter average, since we do not have data from the first three quarters.

JAIL PROFILE SURVEY

CALIFORNIA COUNTY JAILS - FOR MONTHS OF APRIL - JUNE 1998

Projected Total

Average Daily Population (ADP)

Highest One Day Count ^a	84,267 ^b
ADP	80,391 ^c
Holding Areas	1,042
Average "Under the Roof" ^d	81,433 ^e

Categories of Inmates

Felony	56,355
Misdemeanor	22,709
Unspecified	1,326
Total	80,391
Non-Sentenced Males	39,830
Non-Sentenced Females	5,744
Sentenced Males	29,465
Sentenced Females	5,351
Total	80,391
Maximum Security Inmates	34,898
Medium Security Inmates	20,304
Minimum Security Inmates	24,568
Unspecified	621
Total	80,391

Special Use Beds

Medical Beds	864
Mental Beds	2,568

^a The highest one day inmate population counts in the 63 jurisdictions.

^b Unless otherwise indicated, the numbers reported in this table are an average across the days covered by the report.

^c The Average Daily Population in all jurisdictions is for the days covered by the report.

^d The term "Under the Roof" is the sum of the Average Daily Population plus the inmates in Holding Areas.

Projected Total

Inmates from Other Jurisdictions

Inmates Housed on Federal Contract	3,555
Inmates Housed on Contract with CDC	2,013
Inmates from Other Counties on Contract	19
Inmates Awaiting Transport	1,203
Total	6,791

Number of People Released Per Month Due to Lack of Space

Pretrial Release	7,300
Early Release	12,373
Total	19,673^e

Inmates with 2 and 3 Strikes

2 Strike Inmates	2,943 ^f
3 Strike Inmates	1,914 ^f
Total	4,857^e

Unservd Warrants

Felony Warrants	242,160 ^f
Misdemeanor Warrants	2,392,763 ^f
Total	2,634,923

Other Jail Profile Survey Variables

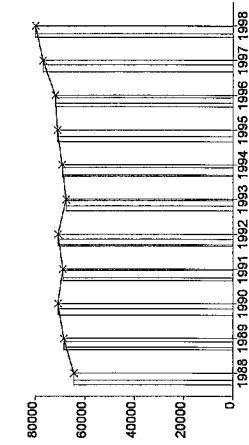
Bookings per Month	100,847 ^f
Juveniles in Custody	158 ^f
Undocumented Aliens	8,766 ^f
Assaults	210 ^f

^e Grand totals may not add up exactly to the column totals due to rounding.

^f This number is the average for the quarters represented by the span of time covered by this report.

Average Daily Population

10 Year Summary									
1988	1989	1990	1991	1992	1993	1994			
64,335	68,535	70,845	68,923	70,853	67,576	69,233			
							1995	1996	1997
							71,107	72,029	76,906



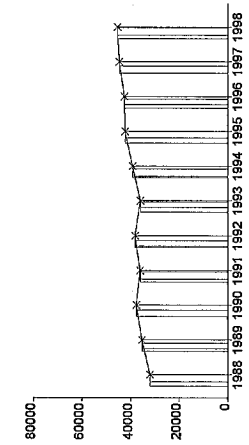
For the first time in history, the Average Daily Population has risen above 80,000 inmates. Although the increase this quarter was a relatively modest 771 inmates (about a 1% increase statewide), this is the tenth straight quarter of increases. Since the ADP exceeds that number of beds that meet the Board of Corrections standards by about 9,000, we believe this is approaching a very real maximum ADP given the current capacity of our State's jail system. On the other hand, we have been making that prediction each quarter for the last couple of years, and the ADP keeps on rising.

Quarterly Results

	Q1	Q2	Q3	Q4	Average
1997	75,684	76,778	77,529	77,633	76,906
1998	79,620	80,391			80,005

Non-Sentenced ADP

10 Year Summary									
1988	1989	1990	1991	1992	1993	1994			
31,959	35,264	37,630	36,064	38,110	35,899	39,122			
							1995	1996	1997
							42,237	42,541	44,590



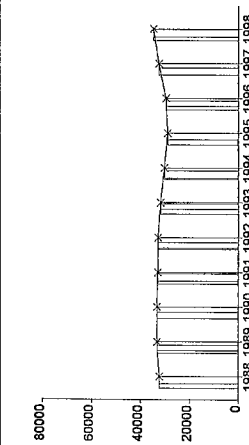
The non-sentenced population increased by only 255 inmates last quarter and by only 292 this quarter. Therefore, the slowdown in the growth of the non-sentenced population continues to occur. This slowdown is consistent with the fact that 7,300 pre-trial individuals are released each month in California due to lack of jail space.

Quarterly Results

	Q1	Q2	Q3	Q4	Average
1997	44,257	44,072	45,003	45,028	44,590
1998	45,283	45,575			45,429

Sentenced ADP

10 Year Summary									
1988	1989	1990	1991	1992	1993	1994			
32,376	33,271	33,215	32,859	32,743	31,677	30,142			
							1995	1996	1997
							28,870	29,488	32,316



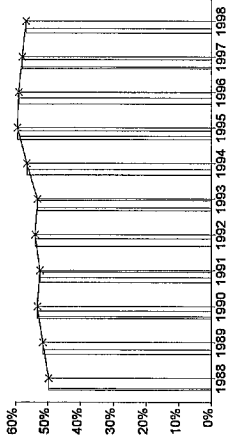
The sentenced ADP continues to grow at a faster rate than the non-sentenced population; although the differences this quarter were small: an increase of 292 non-sentenced inmates versus an increase of 477 sentenced inmates. This increase in sentenced inmates occurred even though 12,393 sentenced inmates are released each month due to lack of jail space.

Quarterly Results

	Q1	Q2	Q3	Q4	Average
1997	31,426	32,705	32,526	32,606	32,316
1998	34,337	34,816			34,576

Percentage Non-Sentenced

10 Year Summary										
	1988	1989	1990	1991	1992	1993	1994	1995	1996	1997
50%		51%	53%	52%	54%	53%	57%	59%	59%	58%



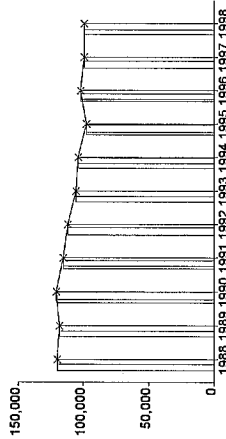
As one might expect from the above numbers, the ratio of non-sentenced to sentenced inmates has not changed significantly this quarter. In fact, percentage of non-sentenced inmates is the same as in the second quarter of 1997. Since the sentenced ADP is now growing faster than the non-sentenced ADP, the percentage of non-sentenced inmates will be gradually declining.

Quarterly Results

	Q1	Q2	Q3	Q4	Average
1997	58	57	58	58	58
1998	57	57			57

Average Number of Persons Booked Per Month

10 Year Summary										
	1988	1989	1990	1991	1992	1993	1994	1995	1996	1997
119,838	118,253	120,716	115,313	112,009	105,593	103,996	97,589	101,939	99,180	



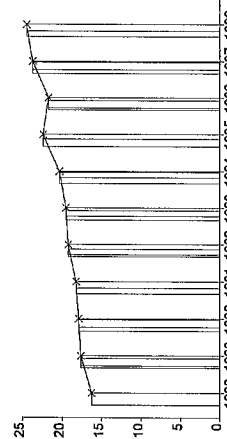
The number of people booked per month was 120,716 in 1990. Last year the number per month was 99,180. This quarter the number was 100,745. This number jumps around quite a bit from month to month. Since 1995, it has stayed within a 93,000 per month to 105,000 per month range. There is no current indication of a trend away from that range.

Quarterly Results

	Q1	Q2	Q3	Q4	Average
1997	98,505	99,686	105,096	93,434	99,180
1998	97,687	100,754			99,221

Average Length of Stay

10 Year Summary										
	1988	1989	1990	1991	1992	1993	1994	1995	1996	1997
16.3	17.6	17.9	18.2	19.2	19.5	20.3	22.3	21.6	23.7	



The Average Length of Stay dropped a small amount this quarter (from 24.7 to 24.2 days). These small decreases occur occasionally within the context of a gradual but very reliable increase in the length of stay over the last decade. We assume that the Average Length of Stay will continue to rise.

Quarterly Results

	Q1	Q2	Q3	Q4	Average
1997	23.1	23.4	22.6	25.5	23.7
1998	24.7	24.2			24.5

**AVERAGE DAILY POPULATION
NON-SENTENCED/SENTENCED MALE/FEMALE
CALIFORNIA COUNTY JAILS - FOR MONTHS OF APRIL - JUNE 1998**

Jurisdiction	Non-sentenced				Sentenced				Total		
	Male		Female		Male		Female				
	#	%	#	%	#	%	#	%			
1. Alameda Sheriff's Dept.	2,616	91%	257	9%	1,086	81%	256	19%	1,343	32%	4,215
2. Amador Sheriff's Dept.	17	87%	3	13%	24	81%	6	19%	30	60%	50
3. Butte Sheriff's Dept.	229	87%	33	13%	153	83%	31	17%	184	41%	446
4. Calaveras Sheriff's Dept.	14	91%	1	9%	28	85%	5	15%	33	68%	48
5. Colusa Sheriff's Dept.	25	83%	5	17%	39	89%	5	11%	44	59%	74
6. Contra Costa Sheriff's Dept.	841	85%	147	15%	590	90%	64	10%	654	40%	1,642
7. Del Norte Sheriff's Dept.	66	89%	8	11%	30	90%	3	10%	34	31%	108
8. El Dorado Sheriff's Dept.	130	89%	17	11%	155	88%	20	12%	176	54%	322
9. Fresno Sheriff's Dept.	1,578	87%	226	13%	330	88%	45	12%	375	17%	2,179
10. Glenn Sheriff's Dept.	50	95%	3	5%	19	71%	8	29%	27	33%	80
11. Humboldt Sheriff's Dept.	297	91%	31	9%	17	94%	1	6%	18	5%	345
12. Imperial Sheriff's Dept.	162	50%	162	50%	162	50%	162	50%	323	50%	647
13. Inyo Sheriff's Dept.	21	92%	2	8%	40	84%	8	16%	48	68%	71
14. Kern Sheriff's Dept.	1,300	87%	190	13%	435	77%	127	23%	562	27%	2,051
15. Kings Sheriff's Dept.	149	85%	26	15%	141	86%	23	14%	164	48%	339
16. Lake Sheriff's Dept.	86	90%	10	10%	81	79%	21	21%	102	52%	197
17. Lassen Sheriff's Dept.	48	83%	10	17%	43	72%	17	28%	59	51%	117
18. Los Angeles Sheriff's Dept.	10,062	89%	1,210	11%	8,916	86%	1,411	14%	10,327	48%	21,599
19. Madera Corrections Dept.	135	90%	14	10%	146	90%	16	10%	162	52%	311
20. Marin Sheriff's Dept.	180	86%	30	14%	53	89%	7	11%	60	22%	270
21. Mariposa Sheriff's Dept.	27	89%	3	11%	22	85%	4	15%	25	46%	55
22. Mendocino Sheriff's Dept.	128	89%	15	11%	86	88%	11	12%	97	40%	241
23. Merced Sheriff's Dept.	283	91%	27	9%	188	87%	28	13%	216	41%	526
24. Modoc Sheriff's Dept.	9	76%	3	24%	20	84%	4	16%	24	66%	37
25. Mono Sheriff's Dept.	10	95%	1	5%	10	81%	2	19%	12	53%	23
26. Monterey Sheriff's Dept.	627	90%	73	10%	321	87%	47	13%	369	34%	1,068
27. Napa Corrections Dept.	126	91%	12	9%	66	83%	13	17%	79	36%	217
28. Nevada Sheriff's Dept.	74	85%	13	15%	49	77%	15	23%	63	42%	151
29. Orange Sheriff's Dept.	1,990	78%	562	22%	2,291	84%	451	16%	2,742	52%	5,294
30. Placer Sheriff's Dept.	208	90%	23	10%	181	84%	34	16%	215	48%	446
31. Plumas Sheriff's Dept.	23	84%	4	16%	24	82%	5	18%	29	51%	56
32. Riverside Sheriff's Dept.	1,705	89%	211	11%	713	87%	107	13%	820	30%	2,736
33. Sacramento Sheriff's Dept.	1,670	84%	307	16%	1,343	84%	247	16%	1,590	45%	3,566
34. San Benito Sheriff's Dept.	43	90%	5	10%	53	87%	8	13%	61	56%	109

**AVERAGE DAILY POPULATION
NON-SENTENCED/SENTENCED MALE/FEMALE
CALIFORNIA COUNTY JAILS - FOR MONTHS OF APRIL - JUNE 1998**

Jurisdiction	Non-sentenced				Sentenced				Total		
	Male		Female		Male		Female				
	#	%	#	%	#	%	#	%			
35. San Bernardino Sheriff's Dept.	3,095	87%	482	13%	1,298	82%	294	18%	1,591	31%	5,169
36. San Diego Probation Dept.	0	0%	0	0%	324	100%	0	0%	324	100%	324
37. San Diego Sheriff's Dept.	2,650	86%	416	14%	2,008	84%	386	16%	2,395	44%	5,460
38. San Diego WorkFurlough	2	67%	1	33%	183	85%	33	15%	217	98%	220
39. San Francisco Sheriff's Dept.	1,229	90%	140	10%	532	85%	91	15%	622	31%	1,991
40. San Joaquin Sheriff's Dept.	515	87%	77	13%	515	83%	106	17%	621	51%	1,213
41. San Luis Obispo Sheriff's Dept.	117	85%	21	15%	224	85%	41	15%	265	66%	403
42. San Mateo Sheriff's Dept.	445	90%	51	10%	649	88%	87	12%	736	60%	1,232
43. Santa Ana Police Dept.	366	86%	59	14%	0	0%	0	0%	0	0%	425
44. Santa Barbara Sheriff's Dept.	362	85%	66	15%	464	89%	55	11%	519	55%	947
45. Santa Clara Dept. of Correction	2,475	91%	259	9%	1,631	87%	251	13%	1,882	41%	4,616
46. Santa Clara Probation Dept.	0	0%	0	0%	258	84%	50	16%	307	100%	307
47. Santa Cruz Sheriff's Dept.	223	90%	24	10%	336	87%	51	13%	387	61%	634
48. Scapular House	0	0%	0	0%	141	92%	12	8%	153	100%	153
49. Shasta Sheriff's Dept.	183	84%	35	16%	107	82%	23	18%	130	37%	348
50. Sierra Sheriff's Dept.	2	98%	0	2%	2	99%	0	1%	2	47%	3
51. Siskiyou Sheriff's Dept.	44	85%	8	15%	30	85%	5	15%	35	40%	88
52. Solano Sheriff's Dept.	421	86%	68	14%	291	85%	50	15%	341	41%	830
53. Sonoma Sheriff's Dept.	482	86%	78	14%	405	84%	77	16%	482	46%	1,042
54. Stanislaus Sheriff's Dept.	479	90%	51	10%	495	83%	99	17%	593	53%	1,123
55. Sutter Sheriff's Dept.	101	86%	16	14%	110	82%	24	18%	134	53%	251
56. Tehama Sheriff's Dept.	0	0%	0	0%	86	39%	133	61%	220	100%	220
57. Trinity Sheriff's Dept.	25	83%	5	17%	22	82%	5	18%	27	47%	57
58. Tulare Sheriff's Dept.	559	89%	77	12%	548	87%	79	13%	627	50%	1,263
59. Tuolumne Sheriff's Dept.	44	87%	7	13%	49	73%	18	27%	67	57%	117
60. Ventura County Work Furlough	0	0%	0	0%	120	79%	33	21%	153	100%	153
61. Ventura Sheriff's Dept.	603	89%	79	12%	644	86%	103	14%	748	52%	1,430
62. Yolo Sheriff's Dept.	253	83%	51	17%	70	76%	23	24%	93	23%	396
63. Yuba County Sheriff's Dept.	229	88%	31	12%	69	88%	10	12%	79	23%	339
Statewide	39,830	87%	6,744	13%	29,466	85%	5,351	16%	34,816	43%	80,391

** Jurisdictions which have not yet been updated for the month(s) in question
Column totals may not add up to the grand total due to rounding

JAIL POPULATIONS: 2nd Quarter '97 versus 2nd Quarter '98*

(*Instructions for interpreting this table appear on the back of this page.)

	A	B	C	D	E	F	G
	1997 Quarter 2	1998 Quarter 2	Qtr 2, 98 minus Qtr 2, 97	Qtr 2, 97 to Qtr 2, 98 % +/-	% of Total Increase or Decrease	Cum %	Cum Total
1	Los Angeles Sheriff's Dept.	20,845	21,599	754	3.6%	19.5%	754
2	San Bernardino Sheriffs Dept.	4,708	5,169	461	9.8%	31.45%	1,215
3	Santa Ana Police Dept.	-	425	425	11.0%	42.45%	1,640
4	Santa Clara Dept. of Correction	4,310	4,616	306	7.1%	50.38%	1,946
5	San Francisco Sheriff's Dept.	1,751	1,991	240	13.7%	56.59%	2,186
6	Orange Sheriff's Dept.	5,090	5,294	204	4.0%	61.87%	2,390
7	Imperial Sheriff's Dept.	480	647	167	34.8%	66.19%	2,557
8	San Diego Sheriff's Dept.	5,317	5,460	143	2.7%	69.89%	2,700
9	Ventura Sheriff's Dept.	1,291	1,430	139	10.8%	73.49%	2,839
10	San Mateo Sheriff's Dept.	1,127	1,232	105	9.3%	76.21%	2,944
11	Stanislaus Sheriff's Dept.	1,039	1,123	84	8.1%	78.38%	3,028
12	Sonoma Sheriff's Dept.	965	1,042	77	8.0%	80.38%	3,105
13	Riverside Sheriff's Dept.	2,667	2,736	69	2.6%	82.16%	3,174
14	Humboldt Sheriff's Dept.	288	345	57	19.8%	83.64%	3,231
15	San Luis Obispo Sheriff's Dept.	354	403	49	13.8%	84.91%	3,280
16	Sacramento Sheriff's Dept.	3,519	3,566	47	1.3%	86.12%	3,327
17	Butte Sheriff's Dept.	400	446	46	11.5%	87.32%	3,373
18	San Joaquin Sheriff's Dept.	1,170	1,213	43	3.7%	88.43%	3,416
19	Monterey Sheriff's Dept.	1,025	1,068	43	4.2%	89.54%	3,459
20	Scapular House	112	153	41	36.6%	90.60%	3,500
21	Lassen Sheriff's Dept.	79	117	38	48.1%	91.59%	3,538
22	Santa Clara Probation Dept.	271	307	36	13.3%	92.52%	3,574
23	Santa Cruz Sheriff's Dept.	599	634	35	5.8%	93.42%	3,609
24	Tehama Sheriff's Dept.	188	220	32	17.0%	94.25%	3,641
25	Napa Corrections Dept.	195	217	22	11.3%	94.82%	3,663
26	Alameda Sheriff's Dept.	4,194	4,215	21	0.5%	95.37%	3,684
27	San Diego WorkFurlough	201	220	19	9.5%	95.86%	3,703
28	Mariposa Sheriff's Dept.	37	55	18	48.6%	96.32%	3,721
29	Inyo Sheriff's Dept.	56	71	15	26.8%	96.71%	3,736
30	Plumas Sheriff's Dept.	41	56	15	36.6%	97.10%	3,751
31	Placer Sheriff's Dept.	432	446	14	3.2%	97.46%	3,765
32	Del Norte Sheriff's Dept.	94	108	14	14.9%	97.83%	3,779
33	Lake Sheriff's Dept.	184	197	13	7.1%	98.16%	3,792
34	Santa Barbara Sheriff's Dept.	935	947	12	1.3%	98.47%	3,804
35	Trinity Sheriff's Dept.	45	57	12	26.7%	98.78%	3,816
36	San Benito Sheriff's Dept.	100	109	9	9.0%	99.02%	3,825
37	Contra Costa Sheriff's Dept.	1,634	1,642	8	0.5%	99.22%	3,833
38	El Dorado Sheriff's Dept.	316	322	6	1.9%	99.38%	3,839
39	Merced Sheriff's Dept.	520	526	6	1.2%	99.53%	3,845
40	Yolo Sheriff's Dept.	390	396	6	1.5%	99.69%	3,851
41	Glenn Sheriff's Dept.	77	80	3	3.9%	99.77%	3,854
42	Sierra Sheriffs Dept.	-	3	3	0.1%	99.84%	3,857
43	Tuolumne Sheriff's Dept.	114	117	3	2.6%	99.92%	3,860
44	Colusa Sheriff's Dept.	72	74	2	2.8%	99.97%	3,862
45	Fresno Sheriff's Dept.	2,178	2,179	1	0.0%	100.00%	3,863
46	Mendocino Sheriff's Dept.	243	241	(2)	-0.8%	0.79%	(2)
47	Siskiyou Sheriff's Dept.	90	88	(2)	-2.2%	1.58%	(4)
48	Calaveras Sheriff's Dept.	51	48	(3)	-5.9%	2.77%	(7)
49	Shasta Sheriff's Dept.	351	348	(3)	-0.9%	3.95%	(10)
50	Kings Sheriff's Dept.	342	339	(3)	-0.9%	5.14%	(13)
51	Nevada Sheriff's Dept.	155	151	(4)	-2.6%	6.72%	(17)
52	San Diego Probation Dept.	331	324	(7)	-2.1%	9.49%	(24)
53	Modoc Sheriff's Dept.	44	37	(7)	-15.9%	12.25%	(31)
54	Tulare Sheriff's Dept.	1,270	1,263	(7)	-0.6%	15.02%	(38)
55	Amador Sheriff's Dept.	57	50	(7)	-12.3%	17.79%	(45)
56	Mono Sheriff's Dept.	30	23	(7)	-23.3%	20.55%	(52)
57	Solano Sheriff's Dept.	841	830	(11)	-1.3%	24.90%	(63)
58	Madera Corrections Dept.	326	311	(15)	-4.6%	30.83%	(78)
59	Marin Sheriff's Dept.	294	270	(24)	-8.2%	40.32%	(102)
60	Casa Oasis	25	-	(25)	-100.0%	50.20%	(127)
61	Sutter Sheriff's Dept.	278	251	(27)	-9.7%	60.87%	(154)
62	Yuba County Sheriff's Dept.	368	339	(29)	-7.9%	72.33%	(183)
63	Kern Sheriff's Dept.	2,082	2,051	(31)	-1.5%	84.58%	(214)
64	Ventura County Work Furlough	192	153	(39)	-20.3%	100.00%	(253)
		76,780	80,390	3,610	4.7%		
			Total increase	3,863			
			Total decrease	(253)			

Note: Totals subject to slight variations due to rounding

Interpretation of Table:
JAIL POPULATIONS: 2nd Quarter '97 versus 2nd Quarter '98

This table:

- summarizes the ADP results for the 64 jurisdictions in California reporting data from Type II, III, and IV jails;
- summarizes jurisdiction ADP results for the most recent quarter (Column B);
- compares jurisdiction ADP for the most recent quarter with the same quarter last year (Column A);
- ranks the jurisdictions in terms of gains or losses in ADP from high to low (Column C);
- lists the percentage growth or decline in ADP for each jurisdiction (Column D);
- lists the percentage of the overall State increase or decrease in ADP that is represented by each jurisdiction (Column E);
- lists, by jurisdiction, the cumulative percentage increase and decrease in the State ADP starting with the jurisdiction with the highest percentage of the increase and proceeding to the jurisdiction with the highest percentage of the decrease (Column F);
- lists, by jurisdiction, the cumulative total increase and decrease in the State ADP starting with the jurisdiction with the highest increase and proceeding to the jurisdiction with the biggest decrease (Column G).
- The shaded jurisdictions are the ones that experienced decreases in their ADP.

Some important conclusions from this table are:

1. The two numbers at the bottom indicate the "total increase" in ADP (in this case 3,863) and "total decrease" in ADP (253). In other words, the jurisdictions experiencing increases had a total increase of 3,863 ADP; and the jurisdictions experiencing decreases had a total decrease of 253 ADP. Subtracting 253 from 3,863 produces the overall increase of 3,610 between the second quarter of 1997 and the second quarter of 1998.
2. The Los Angeles ADP increase of 754 is 19.5% of the total increase of 3,610. Forty five jurisdictions had increases (down to Fresno Sheriff's Department). When you get to Fresno Sheriff's Department in Column F, you have accounted for 100% of the increases (100% of the cumulative total of 3,610).
3. Jurisdictions that experienced a decrease in ADP are listed from smallest decrease to largest decrease (Mendocino Sheriff's Department to Ventura County Work Furlough). When you get to the bottom of the table, you have accounted for 100% of the total decreases of 253 inmates
4. The cumulative percentage of ADP increase for the top five jurisdictions (Los Angeles County Sheriff's Department to San Francisco Sheriff's Department) is 56.6%. In other words, five jurisdictions accounted for over 50% of the ADP increase.
5. In the last 12 months the ADP has increased by 4.7%.

BOARD OF CORRECTIONS

BOARD OF CORRECTIONS, 1500 SUTTER DRIVE, SACRAMENTO, CA 95834 916/445-5073 www.bdcrr.ca.gov



JAIL PROFILE SURVEY

II

Reporting Period: January to March, 1998

County Jail Populations

ADP ^a	79,620 ^b
Holding Areas	946
Average "Under the Roof" ^c	80,566 ^d
Highest One Day Count	83,779 ^e

Special Use Beds

Medical Beds	0
Mental Health Beds	0

County Jail Populations

Felony	57,011
Misdemeanor	22,609
Total	79,620
Non-Sentenced Males	39,397
Non-Sentenced Females	5,886
Sentenced Males	29,360
Sentenced Females	4,977
Total	79,620
Maximum Security Inmates	38,327
Medium Security Inmates	17,261
Minimum Security Inmates	24,032
Total	79,620

Released Per Month Due to Lack of Space

Pretrial Release	7,861 ^f
Early Release	12,512 ^f
Total	20,373

Inmates with 2 and 3 Strikes

2 Strike Inmates	3,064 ^g
3 Strike Inmates	2,092 ^g
Total	5,156

Unserviced Warrants

Felony Warrants	237,962 ^g
Misdemeanor Warrants	2,331,814 ^g
Total	2,569,776

Inmates From Other Jurisdictions

Housed on Federal Contract	3,337
Housed on Contract with CDC	1,863
From Other Counties on Contract	27
Awaiting Transport	1,650
Total	6,877

Other Jail Profile Survey Variables

Bookings Per Month	97,451 ^f
Juveniles in Custody	135 ^f
Criminal / Illegal Aliens	9,108
Assaults On Staff	182

- a. The Average Daily Population for all jurisdictions (excluding Type I's) does not include inmates in holding areas.
- b. Unless otherwise indicated, the numbers reported are the average across the days in the quarter.
- c. "Under the Roof" is the sum of the Average Daily Population plus the average daily number of inmates in Holding Areas.
- d. Totals may not be the exact sum of the subtotals due to rounding.
- e. The sum of all Highest One Day inmate population counts from all jurisdictions.
- f. These data are collected on a monthly basis, this figure is an average of the total numbers collected each month during this quarter.
- g. These data are one-day snapshots collected at the end of the quarter.