

# JAIL PROFILE SURVEY

## 1997, 2nd QUARTER SURVEY RESULTS

FACILITIES STANDARDS AND OPERATIONS DIVISION

BOARD OF CORRECTIONS

STATE OF CALIFORNIA  
600 Bercut Drive  
Sacramento, CA 95814-0185  
(916) 445-5073



# JAIL PROFILE SURVEY

## EXPLANATION OF RESULTS

The following pages contain the Jail Profile Survey results for the second quarter of 1997. Page 1 contains the quarterly totals based upon the monthly and quarterly data submitted to us by the participating jurisdictions. Page 2 and 3 shows the trend data for variables we have been tracking for the last ten years. The remainder of this page provides explanations and clarifications of the data presented.

### Page 1

- Unless otherwise noted, "projected totals" are based upon the average per day for the variable in question. For example, there were an average of 76,778 inmates per day in local jails (excluding Type I's) during the three month span of April to June 1997.
- For some variables, we did not receive data from all jurisdictions. We compute the percentage of the ADP which were housed in the jurisdictions that did supply us with data. For example, 95.95% of the jurisdictions indicated the number of felony inmates in their facilities. In these cases, we projected what the statewide number of felony inmates would have been if we had complete data from all the participating jurisdictions.
- The number for "Bookings" is the average of the monthly totals for April, May and June.
- For the following variables, the numbers presented are the totals as of the mid-quarter (i.e., May 15, 1997): Pretrial Release, Early Release, 2 and 3 Strikes, Felony Warrants, Misdemeanor Warrants, Juveniles in Custody and Undocumented Aliens.
- Assaults is the total number of serious inmate assaults on staff (resulting in a crime report), statewide, during the second quarter of 1997.

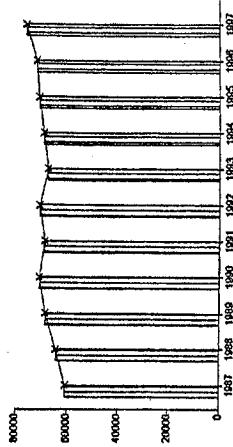
### Pages 2 and 3

- The data in the 10 Year Summary tables are based upon survey data which the Board has gathered since the early 1980's
- Prior to 1995, yearly averages were reported to the Board on an annual basis. Yearly averages from 1996 on have been the average across the 12 calendar months. In 1995, the yearly figure reported is the fourth quarter average, since we do not have data from the first three quarters.



**Average Daily Population**

10 Year Summary											
	1987	1988	1989	1990	1991	1992	1993	1994	1995	1996	1997
	60,802	64,335	68,535	70,845	68,923	70,853	67,576	69,233	71,107	72,029	72,029



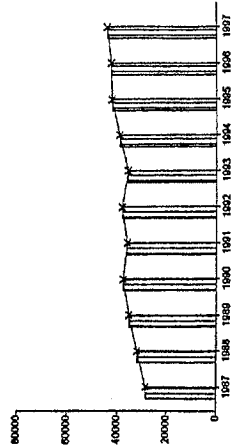
The ADP has risen again this quarter. This is the 6th straight quarter of increases. The ADP for this 2nd quarter is over 5,000 inmates higher than the 2nd quarter of 1996. The 2nd quarter ADP is also the highest in history. The most likely cause for the increase is the significant reduction in early releases due to lack of space. This number (22,410 for the 2nd quarter) is over three thousand fewer releases than were recorded in the 1st quarter of 1997 (25,689). The most recent increases in ADP are alarming because most of the local jail systems were either at near capacity or overcrowded before the increases began approximately one and a half years ago.

**Quarterly Results**

	Q1	Q2	Q3	Q4	Average
1996	71,117	71,590	72,473	72,935	72,029
1997	75,706	76,778	0	0	76,242

**Non-Sentenced ADP**

10 Year Summary											
	1987	1988	1989	1990	1991	1992	1993	1994	1995	1996	1997
	28,528	31,959	35,264	37,630	36,064	38,110	35,899	39,122	42,237	42,541	42,541



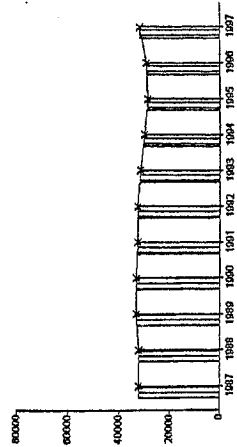
The non-sentenced ADP decreased slightly in the 2nd quarter. This follows a fairly sizable jump in the 1st quarter. The non-sentenced population over the last six quarters is not rising as fast as the sentenced population. This is a reversal in a long-standing trend. We will monitor these data closely to determine whether this one-quarter reversal is the beginning of a downward trend.

**Quarterly Results**

	Q1	Q2	Q3	Q4	Average
1996	42,812	42,724	42,107	42,520	42,641
1997	44,257	44,072	0	0	44,166

**Sentenced ADP**

10 Year Summary											
	1987	1988	1989	1990	1991	1992	1993	1994	1995	1996	1997
	32,274	32,376	33,271	33,215	32,859	32,743	31,677	30,142	28,870	29,488	29,488



The sentenced ADP has been on the rise for six quarters. The sentenced population increased in the 2nd quarter by over 1,200. The average sentenced ADP for 1997 is about 2,500 inmates higher than the 1996 average. The 1997 average is only about 1,000 inmates lower than the highest yearly average ever recorded (1989). The most likely cause of this trend seems to be the reduction in the early releases.

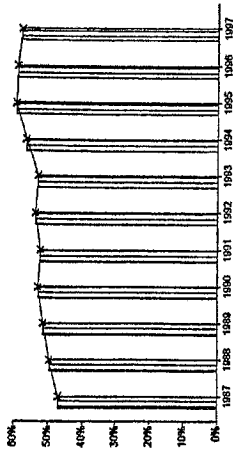
**Quarterly Results**

	Q1	Q2	Q3	Q4	Average
1996	28,304	28,867	30,367	30,415	29,488
1997	31,449	32,705	0	0	32,077



**Percentage Non-Sentenced**

10 Year Summary											
	1987	1988	1989	1990	1991	1992	1993	1994	1995	1996	1997
	47%	50%	51%	53%	52%	54%	53%	57%	59%	59%	58%



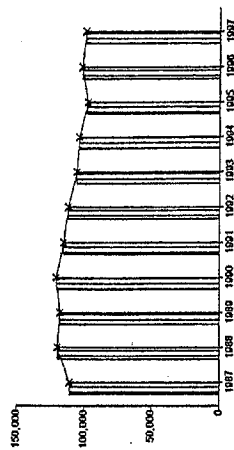
With the sentenced population ADP rising faster as of late than the non-sentenced population, one would expect that the non-sentenced percentage of the total ADP would be declining. This is what happened this quarter as the percentage of non-sentenced inmates declined to 57% of the total ADP. The highest percentage of non-sentenced inmates (60%) was reached in the first two quarters of 1996. After over a decade of increases in the percentage of non-sentenced inmates, the percentage has been on the decline for the last 12 months.

**Quarterly Results**

	Q1	Q2	Q3	Q4	Average
1996	60	60	58	58	59
1997	58	57		0	58

**Average Number of Persons Booked Per Month**

10 Year Summary											
	1987	1988	1989	1990	1991	1992	1993	1994	1995	1996	1997
	111,039	119,838	118,253	120,716	115,313	112,009	105,593	103,996	97,589	101,939	101,939



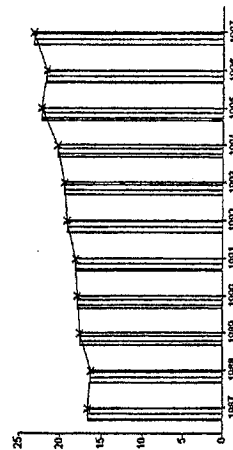
The average number of persons booked per month in the 2nd quarter of 1997 (99,686) was about 4,000 inmates lower than the number booked in the 2nd quarter of 1996 (103,433). The number of bookings peaked in 1990 at 120,716 per month. Even though there was a moderate increase in the first three quarters of 1996, the results for this quarter are consistent with a seven-year gradual decline in the number of bookings.

**Quarterly Results**

	Q1	Q2	Q3	Q4	Average
1996	104,385	103,433	104,133	95,805	101,939
1997	98,505	99,686		0	99,096

**Average Length of Stay**

10 Year Summary											
	1987	1988	1989	1990	1991	1992	1993	1994	1995	1996	1997
	16.7	16.3	17.6	17.9	18.2	19.2	19.5	20.3	22.3	21.6	21.6



With the significant decline in the number of inmates being released early, and the significant increase in the ADP, one would expect the Average Length of Stay to increase also. The Average Length of Stay did, in fact, increase during the 2nd quarter to 23.4 days. This is the highest Average Length of Stay ever recorded and almost 2.5 days higher than one year ago, and almost seven days higher than a decade ago. We need to follow up this factor closely since Average Length of Stay obviously has a very significant impact on the need for jail space.

**Quarterly Results**

	Q1	Q2	Q3	Q4	Average
1996	20.7	21.0	21.5	23.4	21.6
1997	23.1	23.4		0.0	23.3





**AVERAGE DAILY POPULATION  
NON-SENTENCED/SENTENCED MALE/FEMALE  
CALIFORNIA COUNTY JAILS - FOR MONTHS OF APRIL - JUNE 1997**

	Non-sentenced				Sentenced				Total				
	Male		Female		Male		Female						
	#	%	#	%	#	%	#	%					
<b>Jurisdiction</b>													
1. Alameda Sheriff's Dept.**	2,708	92%	238	8%	2,946	70%	1,040	83%	209	17%	1,249	30%	4,194
2. Amador Sheriff's Dept.	21	85%	4	15%	24	43%	27	83%	5	17%	32	57%	57
3. Butte Sheriff's Dept.	206	88%	28	12%	234	58%	141	85%	25	15%	166	42%	400
4. Calaveras Sheriff's Dept.	18	80%	4	20%	22	43%	25	88%	4	12%	29	57%	51
5. Colusa Sheriff's Dept.	40	93%	3	7%	43	60%	18	62%	11	38%	29	40%	72
6. Contra Costa Sheriff's Dept.	769	86%	124	14%	893	55%	666	90%	75	10%	741	45%	1,634
7. Del Norte Sheriff's Dept.	23	74%	8	26%	31	33%	54	86%	9	14%	63	67%	94
8. El Dorado Sheriff's Dept.**	90	88%	12	12%	102	32%	193	90%	21	10%	214	68%	316
9. Fresno Sheriff's Dept.**	1,545	90%	172	10%	1,716	79%	396	86%	65	14%	461	21%	2,178
10. Glenn Sheriff's Dept.	44	92%	4	8%	48	62%	26	87%	4	13%	30	38%	77
11. Humboldt Sheriff's Dept.	193	87%	30	13%	223	78%	58	90%	6	10%	64	22%	288
12. Imperial Sheriff's Dept.	120	50%	120	50%	240	50%	120	50%	120	50%	240	50%	480
13. Inyo Sheriff's Dept.	23	91%	2	9%	25	45%	26	86%	4	14%	31	55%	56
14. Kern Sheriff's Dept.	1,314	86%	208	14%	1,522	73%	434	78%	126	22%	560	27%	2,082
15. Kings Sheriff's Dept.**	162	91%	17	9%	179	52%	142	87%	21	13%	163	48%	342
16. Lake Sheriff's Dept.	83	95%	4	5%	87	47%	84	87%	12	13%	97	53%	184
17. Lassen Sheriff's Dept.	26	84%	5	16%	31	39%	38	79%	10	21%	48	61%	79
18. Los Angeles Sheriff's Dept.	10,245	89%	1,256	11%	11,500	55%	8,497	91%	847	9%	9,344	45%	20,845
19. Madera Corrections Dept.**	154	88%	20	12%	174	54%	138	92%	13	8%	151	46%	326
20. Marin Sheriff's Dept.	203	88%	29	12%	232	79%	52	84%	10	16%	62	21%	294
21. Mariposa Sheriff's Dept.	17	92%	2	8%	18	50%	16	90%	2	10%	18	50%	37
22. Mendocino Sheriff's Dept.	118	89%	14	11%	132	54%	95	85%	16	15%	111	46%	243
23. Merced Sheriff's Dept.	287	91%	29	9%	316	61%	179	87%	26	13%	204	39%	520
24. Modoc Sheriff's Dept.	11	92%	1	8%	12	27%	24	75%	8	25%	32	73%	44
25. Mono Sheriff's Dept. **	9	84%	2	16%	11	37%	17	89%	2	11%	19	63%	30
26. Monterey Sheriff's Dept.	581	89%	72	11%	653	64%	336	90%	36	10%	373	36%	1,025
27. Napa Corrections Dept.	112	91%	11	9%	123	63%	63	88%	9	12%	72	37%	195
28. Nevada Sheriff's Dept.	69	86%	12	14%	81	52%	65	88%	9	12%	74	48%	155
29. Orange Sheriff's Dept.	1,850	89%	223	11%	2,073	41%	2,592	86%	425	14%	3,017	59%	5,090
30. Placer Sheriff's Dept.	265	86%	41	14%	306	71%	118	94%	7	6%	125	29%	432
31. Plumas Sheriff's Dept.**	13	84%	2	16%	16	38%	23	92%	2	8%	25	62%	41
32. Riverside Sheriff's Dept.	1,624	90%	189	10%	1,812	68%	737	86%	118	14%	855	32%	2,667
33. Sacramento Sheriff's Dept.	1,636	86%	271	14%	1,907	54%	1,360	84%	252	16%	1,612	46%	3,519
34. San Benito Sheriff's Dept.	40	87%	6	13%	46	46%	50	91%	5	9%	54	54%	100



**AVERAGE DAILY POPULATION  
NON-SENTENCED/SENTENCED MALE/FEMALE  
CALIFORNIA COUNTY JAILS - FOR MONTHS OF APRIL - JUNE 1997**

Jurisdiction	Non-sentenced			Sentenced			Total				
	Male		Female	Male		Female		Total			
	#	%	#	#	%	#		%			
35. San Bernardino Sheriff's Dept.**	2,943	88%	417	12%	1,127	84%	221	16%	1,349	29%	4,708
36. San Diego Probation Dept.	0	0%	0	0%	331	100%	0	0%	331	100%	331
37. San Diego Sheriff's Dept.	2,573	87%	391	13%	1,977	84%	375	16%	2,352	44%	5,317
38. San Diego Work/Furlough	5	9%	53	91%	128	90%	15	10%	142	71%	201
39. San Francisco Sheriff's Dept.	1,067	89%	128	11%	478	86%	77	14%	556	32%	1,751
40. San Joaquin Sheriff's Dept.	484	84%	90	16%	499	84%	98	16%	596	51%	1,170
41. San Luis Obispo Sheriff's Dept.	115	90%	13	10%	194	86%	32	14%	226	64%	354
42. San Mateo Sheriff's Dept.	331	88%	44	12%	667	89%	85	11%	752	67%	1,127
127. Santa Ana Police Dept.	0	0%	0	0%	0	0%	0	0%	0	0%	0
43. Santa Barbara Sheriff's Dept.	365	89%	47	11%	452	86%	72	14%	524	56%	935
44. Santa Clara Dept. of Correction	2,480	80%	610	20%	1,014	83%	207	17%	1,221	28%	4,310
45. Santa Clara Probation Dept.	0	0%	0	0%	251	93%	20	7%	271	100%	271
46. Santa Cruz Sheriff's Dept.	208	88%	27	12%	317	87%	47	13%	365	61%	599
47. Scapular House**	0	0%	0	0%	95	85%	16	15%	112	100%	112
48. Shasta Sheriff's Dept.	208	89%	27	11%	105	90%	12	10%	116	33%	351
49. Siskiyou Sheriff's Dept.	38	82%	9	18%	37	85%	6	15%	43	48%	90
50. Solano Sheriff's Dept.	502	89%	60	11%	233	83%	47	17%	280	33%	841
51. Sonoma Sheriff's Dept.	456	86%	72	14%	391	89%	47	11%	438	45%	965
52. Stanislaus Sheriff's Dept.	463	89%	60	11%	435	84%	82	16%	517	50%	1,039
53. Sutter Sheriff's Dept.	141	87%	21	13%	93	80%	23	20%	115	42%	278
54. Tehama Sheriff's Dept.	54	91%	6	9%	62	48%	66	52%	128	68%	188
55. Trinity Sheriff's Dept.	21	91%	2	9%	19	86%	3	14%	22	48%	45
56. Tulare Sheriff's Dept.	476	86%	78	14%	638	89%	78	11%	716	56%	1,270
57. Tuolumne Sheriff's Dept.	39	87%	6	13%	59	85%	11	15%	70	61%	114
58. Ventura County Work Furlough	0	0%	0	0%	163	85%	28	15%	192	100%	192
59. Ventura Sheriff's Dept.	567	90%	65	10%	558	85%	101	15%	659	51%	1,291
60. Yolo Sheriff's Dept.	253	87%	39	13%	77	79%	20	21%	98	25%	390
61. Yuba County Sheriff's Dept.	219	91%	22	9%	115	91%	12	9%	127	35%	368
<b>Statewide</b>	<b>38,626</b>	<b>88%</b>	<b>5,447</b>	<b>12%</b>	<b>28,365</b>	<b>87%</b>	<b>4,315</b>	<b>13%</b>	<b>32,680</b>	<b>43%</b>	<b>76,753</b>

\*\* Jurisdictions which have not yet been updated for the month(s) in question  
Column totals may not add up to the grand total due to rounding



CALIFORNIA JAIL POPULATION 1996 AND 1997

Jurisdiction	1996				1997			
	Quarter 1	Quarter 2	Quarter 3	% +/-	Quarter 4	Quarter 1	Quarter 2	% +/-
Alameda Sheriff's Dept.	3,889.37	3,918.47	3,975.00	0.7%	3,988.00	4,128.00	4,194.00	3.5%
Amador Sheriff's Dept.	35.38	53.59	45.00	51.5%	45.00	49.00	57.00	8.9%
Butte Sheriff's Dept.	404.68	407.78	415.00	0.8%	408.00	416.00	400.00	2.0%
Calaveras Sheriff's Dept.	54.92	55.14	54.00	0.4%	53.00	50.00	51.00	-5.7%
Casa Oasis	25.00	25.00	25.00	0.0%	25.00	25.00	25.00	0.0%
Colusa Sheriff's Dept.	68.57	73.01	73.00	6.5%	63.00	65.00	72.00	3.2%
Contra Costa Sheriff's Dept.	1,502.01	1,590.31	1,621.00	5.9%	1,526.00	1,599.00	1,634.00	4.8%
Del Norte Sheriff's Dept.	85.21	87.40	100.00	2.6%	93.00	96.00	94.00	3.2%
El Dorado Sheriff's Dept.	265.82	258.00	302.00	-2.9%	300.00	306	316.00	2.0%
Fresno Sheriff's Dept.	2,041.78	2,061.91	2,068.00	1.0%	2,139.00	2,133.00	2,178.00	-0.3%
Glenn Sheriff's Dept.	74.46	71.03	70.00	-4.6%	66.00	77.00	77.00	16.7%
Humboldt Sheriff's Dept.	2,222.62	216.67	206.00	-2.7%	227.00	268.00	288.00	18.1%
Imperial Sheriff's Dept.	494.93	521.65	522.00	5.4%	548.00	496.00	480.00	-9.5%
Inyo Sheriff's Dept.	56.25	64.54	73.00	14.7%	60.00	61.00	56.00	1.7%
Kern Sheriff's Dept.	2,050.91	2,057.07	2,044.00	0.3%	2,102.00	2,059.00	2,082.00	-2.0%
Kings Sheriff's Dept.	321.57	314.91	347.00	-2.1%	338.00	342.00	342.00	1.2%
Lake Sheriff's Dept.	172.59	185.42	170.00	7.4%	167.00	201.00	184.00	20.4%
Lassen Sheriff's Dept.	102.57	88.01	88.00	-14.2%	92.00	80.00	79.00	-13.0%
Los Angeles Sheriff's Dept.	17,852.42	18,093.01	18,702.00	1.3%	19,163.00	20,541.00	20,845.00	7.2%
Madera Corrections Dept.	303.61	291.11	325.00	-4.1%	342.00	324.00	326.00	-5.3%
Marin Sheriff's Dept.	255.70	289.16	295.00	13.1%	286.00	293.00	294.00	2.4%
Mariposa Sheriff's Dept.	42.55	38.52	42.00	-9.5%	43.00	41.00	37.00	-4.7%
Mendocino Sheriff's Dept.	201.18	205.11	200.00	2.0%	207.00	236.00	243.00	14.0%
Merced Sheriff's Dept.	510.14	487.32	488.00	-4.5%	495.00	505.00	520.00	2.0%
Modoc Sheriff's Dept.	40.73	38.97	33.00	-4.3%	32.00	32.00	44.00	0.0%
Mono Sheriff's Dept.	28.12	37.03	32.00	31.7%	25.00	33.00	30.00	32.0%
Monterey Sheriff's Dept.	1,004.23	990.58	1,032.00	-1.4%	1,000.00	1,062.00	1,025.00	6.2%
Napa Corrections Dept.	219.36	193.67	175.00	-11.7%	186.00	188.00	195.00	1.1%
Nevada Sheriff's Dept.	179.25	150.23	152.00	-16.2%	142.00	148.00	155.00	4.2%
Orange Sheriff's Dept.	4,916.21	5,044.01	5,118.00	2.6%	5,061.00	5,073.00	5,090.00	0.2%
Placer Sheriff's Dept.	407.53	413.69	415.00	1.5%	432.00	418.00	432.00	-3.2%
Plumas Sheriff's Dept.	50.41	42.53	46.00	-15.6%	35.00	39.00	41.00	11.4%
Riverside Sheriff's Dept.	2,537.12	2,564.45	2,634.00	1.1%	2,581.00	2,621.00	2,667.00	1.5%
Sacramento Sheriff's Dept.	3,206.53	3,206.49	3,238.00	0.0%	3,245.00	3,415.00	3,519.00	5.2%
San Benito Sheriff's Dept.	99.25	105.68	113.00	6.5%	106.00	101.00	100.00	-4.7%
San Bernardino Sheriff's Dept.	3,955.78	4,154.31	4,079.00	5.0%	4,085.00	4,468.00	4,708.00	9.4%
San Diego Probation Dept.	400.46	400.77	351.00	0.1%	319.00	302.00	331.00	-5.3%
San Diego Sheriff's Dept.	5,190.62	5,028.42	5,025.00	-3.1%	5,139.00	5,318.00	5,317.00	3.5%
San Diego WorkFurlough	-	-	217.00	-	205.00	204.00	201.00	-0.5%
San Francisco Sheriff's Dept.	1,941.86	1,933.20	1,950.00	-0.4%	1,994.00	2,005.00	1,751.00	0.6%



Santa Clara Sheriff's Dept.	1,159.00	1,187.95	2.5%	1,183.00	-0.4%	1,139.00	-3.7%	1,168.00	2.5%	1,170.00	0.2%
San Luis Obispo Sheriff's Dept.	388.70	346.27	-10.9%	340.00	-1.8%	358.00	5.3%	359.00	0.3%	354.00	-1.4%
San Mateo Sheriff's Dept.	1,090.46	1,074.81	-1.4%	1,175.00	9.3%	1,123.00	-4.4%	1,159.00	3.2%	1,127.00	-2.8%
Santa Barbara Sheriff's Dept.	945.65	929.47	-1.7%	943.00	1.5%	876.00	-7.1%	857.00	-2.2%	935.00	9.1%
Santa Clara Dept. of Correction	4,283.63	4,259.77	-0.6%	4,149.00	-2.6%	4,162.00	0.3%	4,321.00	3.8%	4,310.00	-0.3%
Santa Clara Probation Dept.	280.08	330.64	18.1%	290.00	-12.3%	265.00	-8.6%	231.00	-12.8%	271.00	17.3%
Santa Cruz Sheriff's Dept.	529.00	532.36	0.6%	526.00	-1.2%	567.00	7.8%	605.00	6.7%	599.00	-1.0%
Scapular House	102.32	98.32	-3.9%	98.00	-0.3%	98.00	0.0%	116.00	18.4%	112.00	-3.4%
Shasta Sheriff's Dept.	385.75	390.90	1.3%	346.00	-11.5%	359.00	3.8%	358.00	-0.3%	351.00	-2.0%
Siskiyou Sheriff's Dept.	87.45	86.98	-0.5%	86.00	-1.1%	84.00	-2.3%	87.00	3.6%	90.00	3.4%
Solano Sheriff's Dept.	778.64	756.29	-2.9%	770.00	1.8%	806.00	4.7%	779.00	-3.3%	841.00	8.0%
Sonoma Sheriff's Dept.	883.44	895.19	1.3%	890.00	-0.6%	900.00	1.1%	915.00	1.7%	965.00	5.5%
Stanislaus Sheriff's Dept.	924.27	936.43	1.3%	947.00	1.1%	964.00	1.8%	1,016.00	5.4%	1,039.00	2.3%
Sutter Sheriff's Dept.	207.14	241.04	16.4%	214.00	-11.2%	215.00	0.5%	197.00	-8.4%	278.00	41.1%
Tehama Sheriff's Dept.	157.27	164.67	4.7%	136.00	-17.4%	133.00	-2.2%	159.00	19.5%	188.00	18.2%
Trinity Sheriff's Dept.	29.47	31.32	6.3%	26.00	-17.0%	34.00	30.8%	37.00	8.8%	45.00	21.6%
Tulare Sheriff's Dept.	1,247.13	1,272.71	2.1%	1,249.00	-1.9%	1,238.00	-0.9%	1,270.00	2.6%	1,270.00	0.0%
Tuolumne Sheriff's Dept.	118.34	115.34	-2.5%	112.00	-2.9%	113.00	0.9%	113.00	0.0%	114.00	0.9%
Ventura County Work Furlough	205.57	170.67	-17.0%	166.00	-2.7%	165.00	-0.6%	178.00	7.9%	192.00	7.9%
Ventura Sheriff's Dept.	1,424.55	1,349.16	-5.3%	1,307.00	-3.1%	1,298.00	-0.7%	1,331.00	2.5%	1,291.00	-3.0%
Yolo Sheriff's Dept.	391.91	393.84	0.5%	374.00	-5.0%	367.00	-1.9%	359.00	-2.2%	390.00	8.6%
Yuba County Sheriff's Dept.	285.34	268.08	-6.0%	291.00	8.5%	308.00	5.8%	271.00	-12.0%	368.00	35.8%
Statewide	71,116.81	71,590.38	0.7%	72,478.00	1.2%	72,935.00	0.6%	75,398.00	3.4%	76,780.00	1.8%





## JAIL POPULATIONS OVER THE LAST 5 QUARTERS

	1996 Quarter 1	1997 Quarter 2	Qrt 2, 97 minus Qrt 1, 96	Qrt 1, 96 to Qrt 2, 97 % +/-	% of Total Increase
Alameda Sheriff's Dept.	3,889	4,194	305	7.8%	5.4%
Amador Sheriff's Dept.	35	57	22	61.1%	0.4%
Butte Sheriff's Dept.	405	400	(5)	-1.2%	-0.1%
Calaveras Sheriff's Dept.	55	51	(4)	-7.1%	-0.1%
Casa Oasis	25	25	-	0.0%	0.0%
Colusa Sheriff's Dept.	69	72	3	5.0%	0.1%
Contra Costa Sheriff's Dept.	1,502	1,634	132	8.8%	2.3%
Del Norte Sheriff's Dept.	85	94	9	10.3%	0.2%
El Dorado Sheriff's Dept.	266	316	50	18.9%	0.9%
Fresno Sheriff's Dept.	2,042	2,178	136	6.7%	2.4%
Glenn Sheriff's Dept.	74	77	3	3.4%	0.0%
Humboldt Sheriff's Dept.	223	288	65	29.4%	1.2%
Imperial Sheriff's Dept.	495	480	(15)	-3.0%	-0.3%
Inyo Sheriff's Dept.	56	56	(0)	-0.4%	0.0%
Kern Sheriff's Dept.	2,051	2,082	31	1.5%	0.5%
Kings Sheriff's Dept.	322	342	20	6.4%	0.4%
Lake Sheriff's Dept.	173	184	11	6.6%	0.2%
Lassen Sheriff's Dept.	103	79	(24)	-23.0%	-0.4%
Los Angeles Sheriff's Dept.	17,852	20,845	2,993	16.8%	52.8%
Madera Corrections Dept.	304	326	22	7.4%	0.4%
Marin Sheriff's Dept.	256	294	38	15.0%	0.7%
Mariposa Sheriff's Dept.	43	37	(6)	-13.0%	-0.1%
Mendocino Sheriff's Dept.	201	243	42	20.8%	0.7%
Merced Sheriff's Dept.	510	520	10	1.9%	0.2%
Modoc Sheriff's Dept.	41	44	3	8.0%	0.1%
Mono Sheriff's Dept.	28	30	2	6.7%	0.0%
Monterey Sheriff's Dept.	1,004	1,025	21	2.1%	0.4%
Napa Corrections Dept.	219	195	(24)	-11.1%	-0.4%
Nevada Sheriff's Dept.	179	155	(24)	-13.5%	-0.4%
Orange Sheriff's Dept.	4,916	5,090	174	3.5%	3.1%
Placer Sheriff's Dept.	408	432	24	6.0%	0.4%
Plumas Sheriff's Dept.	50	41	(9)	-18.7%	-0.2%
Riverside Sheriff's Dept.	2,537	2,667	130	5.1%	2.3%
Sacramento Sheriff's Dept.	3,207	3,519	312	9.7%	5.5%
San Benito Sheriff's Dept.	99	100	1	0.8%	0.0%
San Bernardino Sheriffs Dept.	3,956	4,708	752	19.0%	13.3%
San Diego Probation Dept.	400	331	(69)	-17.3%	-1.2%
San Diego Sheriff's Dept.	5,191	5,317	126	2.4%	2.2%
San Diego WorkFurlough		201	201		3.5%
San Francisco Sheriff's Dept.	1,942	1,751	(191)	-9.8%	-3.4%
San Joaquin Sheriff's Dept.	1,159	1,170	11	0.9%	0.2%
San Luis Obispo Sheriff's Dept.	389	354	(35)	-8.9%	-0.6%
San Mateo Sheriff's Dept.	1,090	1,127	37	3.4%	0.6%
Santa Barbara Sheriff's Dept.	946	935	(11)	-1.1%	-0.2%
Santa Clara Dept. of Correction	4,284	4,310	26	0.6%	0.5%
Santa Clara Probation Dept.	280	271	(9)	-3.2%	-0.2%
Santa Cruz Sheriff's Dept.	529	599	70	13.2%	1.2%
Scapular House	102	112	10	9.5%	0.2%
Shasta Sheriff's Dept.	386	351	(35)	-9.0%	-0.6%
Siskiyou Sheriff's Dept.	87	90	3	2.9%	0.0%
Solano Sheriff's Dept.	779	841	62	8.0%	1.1%
Sonoma Sheriff's Dept.	883	965	82	9.2%	1.4%
Stanislaus Sheriff's Dept.	924	1,039	115	12.4%	2.0%
Sutter Sheriff's Dept.	207	278	71	34.2%	1.3%
Tehama Sheriff's Dept.	157	188	31	19.5%	0.5%
Trinity Sheriff's Dept.	29	45	16	52.7%	0.3%
Tulare Sheriff's Dept.	1,247	1,270	23	1.8%	0.4%
Tuolumne Sheriff's Dept.	118	114	(4)	-3.7%	-0.1%
Ventura County Work Furlough	206	192	(14)	-6.6%	-0.2%
Ventura Sheriff's Dept.	1,425	1,291	(134)	-9.4%	-2.4%
Yolo Sheriff's Dept.	392	390	(2)	-0.5%	0.0%
Yuba County Sheriff's Dept.	285	368	83	29.0%	1.5%
	71,117	76,780	5,663	8.0%	100.0%



# JAIL POPULATIONS OVER THE LAST 5 QUARTERS

ORDERED BY PERCENTAGE OF INCREASE

	1996 Quarter 1	1997 Quarter 2	Qrt 2, 97 minus Qrt 1, 96	Qrt 1, 96 to Qrt 2, 97 % +/-	% of Total Increase
Amador Sheriff's Dept.	35	57	22	61.1%	0.4%
Trinity Sheriff's Dept.	29	45	16	52.7%	0.3%
Sutter Sheriff's Dept.	207	278	71	34.2%	1.3%
Humboldt Sheriff's Dept.	223	288	65	29.4%	1.2%
Yuba County Sheriff's Dept.	285	368	83	29.0%	1.5%
Mendocino Sheriff's Dept.	201	243	42	20.8%	0.7%
Tehama Sheriff's Dept.	157	188	31	19.5%	0.5%
San Bernardino Sheriffs Dept.	3,956	4,708	752	19.0%	13.3%
El Dorado Sheriff's Dept.	266	316	50	18.9%	0.9%
Los Angeles Sheriff's Dept.	17,852	20,845	2,993	16.8%	52.8%
Marin Sheriff's Dept.	256	294	38	15.0%	0.7%
Santa Cruz Sheriff's Dept.	529	599	70	13.2%	1.2%
Stanislaus Sheriff's Dept.	924	1,039	115	12.4%	2.0%
Del Norte Sheriff's Dept.	85	94	9	10.3%	0.2%
Sacramento Sheriff's Dept.	3,207	3,519	312	9.7%	5.5%
Scapular House	102	112	10	9.5%	0.2%
Sonoma Sheriff's Dept.	883	965	82	9.2%	1.4%
Contra Costa Sheriff's Dept.	1,502	1,634	132	8.8%	2.3%
Modoc Sheriff's Dept.	41	44	3	8.0%	0.1%
Solano Sheriff's Dept.	779	841	62	8.0%	1.1%
Alameda Sheriff's Dept.	3,889	4,194	305	7.8%	5.4%
Madera Corrections Dept.	304	326	22	7.4%	0.4%
Mono Sheriff's Dept.	28	30	2	6.7%	0.0%
Fresno Sheriff's Dept.	2,042	2,178	136	6.7%	2.4%
Lake Sheriff's Dept.	173	184	11	6.6%	0.2%
Kings Sheriff's Dept.	322	342	20	6.4%	0.4%
Placer Sheriff's Dept.	408	432	24	6.0%	0.4%
Riverside Sheriff's Dept.	2,537	2,667	130	5.1%	2.3%
Colusa Sheriff's Dept.	69	72	3	5.0%	0.1%
Orange Sheriff's Dept.	4,916	5,090	174	3.5%	3.1%
Glenn Sheriff's Dept.	74	77	3	3.4%	0.0%
San Mateo Sheriff's Dept.	1,090	1,127	37	3.4%	0.6%
Siskiyou Sheriff's Dept.	87	90	3	2.9%	0.0%
San Diego Sheriff's Dept.	5,191	5,317	126	2.4%	2.2%
Monterey Sheriff's Dept.	1,004	1,025	21	2.1%	0.4%
Merced Sheriff's Dept.	510	520	10	1.9%	0.2%
Tulare Sheriff's Dept.	1,247	1,270	23	1.8%	0.4%
Kern Sheriff's Dept.	2,051	2,082	31	1.5%	0.5%
San Joaquin Sheriff's Dept.	1,159	1,170	11	0.9%	0.2%
San Benito Sheriff's Dept.	99	100	1	0.8%	0.0%
Santa Clara Dept. of Correction	4,284	4,310	26	0.6%	0.5%
Casa Oasis	25	25	-	0.0%	0.0%
Inyo Sheriff's Dept.	56	56	(0)	-0.4%	0.0%
Yolo Sheriff's Dept.	392	390	(2)	-0.5%	0.0%
Santa Barbara Sheriff's Dept.	946	935	(11)	-1.1%	-0.2%
Butte Sheriff's Dept.	405	400	(5)	-1.2%	-0.1%
Imperial Sheriff's Dept.	495	480	(15)	-3.0%	-0.3%
Santa Clara Probation Dept.	280	271	(9)	-3.2%	-0.2%
Tuolumne Sheriff's Dept.	118	114	(4)	-3.7%	-0.1%
Ventura County Work Furlough	206	192	(14)	-6.6%	-0.2%
Calaveras Sheriff's Dept.	55	51	(4)	-7.1%	-0.1%
San Luis Obispo Sheriff's Dept.	389	354	(35)	-8.9%	-0.6%
Shasta Sheriff's Dept.	386	351	(35)	-9.0%	-0.6%
Ventura Sheriff's Dept.	1,425	1,291	(134)	-9.4%	-2.4%
San Francisco Sheriff's Dept.	1,942	1,751	(191)	-9.8%	-3.4%
Napa Corrections Dept.	219	195	(24)	-11.1%	-0.4%
Mariposa Sheriff's Dept.	43	37	(6)	-13.0%	-0.1%
Nevada Sheriff's Dept.	179	155	(24)	-13.5%	-0.4%
San Diego Probation Dept.	400	331	(69)	-17.3%	-1.2%
Plumas Sheriff's Dept.	50	41	(9)	-18.7%	-0.2%
Lassen Sheriff's Dept.	103	79	(24)	-23.0%	-0.4%
San Diego WorkFurlough		201	201		3.5%
	71,117	76,780	5,663	8.0%	100.0%

