

JAIL PROFILE SURVEY

2001, 1st QUARTER SURVEY RESULTS

FACILITIES STANDARDS AND OPERATIONS DIVISION

BOARD OF CORRECTIONS

STATE OF CALIFORNIA
600 Bercut Drive
Sacramento, CA 95814-0185
(916) 445-5073
www.bdcorr.ca.gov

JAIL PROFILE SURVEY

EXPLANATION OF RESULTS

The following pages contain the Jail Profile Survey results for the first quarter of 2001. Page 1 contains the quarterly totals based upon the monthly and quarterly data submitted to us by the participating jurisdictions. Page 2 and 3 show the trend data for variables we have been tracking for the last ten years. The remainder of this page provides explanations and clarifications of the data presented.

Page 1

- Unless otherwise noted, "projected totals" are based upon the average per day for the variable in question. For example, there was an average of 74,221 inmates per day in local jails (excluding Type I's) during the three-month span of January to March 2001.
- For some variables, we did not receive data from all jurisdictions. We compute the percentage of the ADP which were housed in the jurisdictions that did supply us with data. For example, 96% of the jurisdictions, representing 96% of the state's ADP, indicated the number of felony inmates in their facilities. We then projected what the statewide number of felony inmates would have been if we received felony inmate data from the counties that house the remaining 4% of the inmates.
- The number for "Bookings" is the average of the monthly totals for January, February and March.
- For the following variables, the numbers presented are the totals as of the mid-quarter (i.e., February 15, 2001): Pretrial Release, Early Release, 2 and 3 Strikes, Felony Warrants, Misdemeanor Warrants, Juveniles in Custody and Undocumented Aliens.
- Assaults is the total number of serious inmate assaults on staff (resulting in a crime report), statewide, during the first quarter of 2001.

Pages 2 and 3

- The data in the 10-Year Summary tables are based upon survey data which the Board has gathered since the early 1980's.
- Prior to 1995, yearly averages were reported to the Board on an annual basis. Yearly averages from 1996 on have been the average across the 12 calendar months. In 1995, the yearly figure reported is the fourth quarter average, since we do not have data from the first three quarters.

BOARD OF CORRECTIONS JAIL PROFILE SURVEY

Reporting Period: January to March, 2001

ADP ^a	74,221 ^b
Holding Areas	1,218
Average "Under the Roof" ^c	75,439 ^d
HighestOneDayCount ^e	79,288 ^e

County Jail Populations

Felony	52,471
Misdemeanor	21,750
Unspecified	0
Total	74,221

County Jail Populations

Non-Sentenced Males	39,762
Non-Sentenced Females	5,154
Sentenced Males	25,015
Sentenced Females	4,290
Total	74,221

Maximum Security Inmates	32,613
Medium Security Inmates	22,290
Minimum Security Inmates	19,318
Total	74,221

Inmates From Other Jurisdictions

Housed on Federal Contract	3,865
Housed on Contract with CDC	2,450
From Other Counties on Contract	9
Awaiting Transport	1,255
Total	7,579

Special Use Beds	6,984
Medical Attention Required	5,085
Mental Health Attention Required	926
Medical Beds	3,011

Special Use Beds

Released Per Month Due to Lack of Space	4,178 ^f
Pretrial Release	11,010 ^f
Early Release	15,188
Total	15,188

Released Per Month Due to Lack of Space

Inmates with 2 and 3 Strikes	3,380 ^f
2 Strike Inmates	1,790 ^f
3 Strike Inmates	5,170
Total	5,170

Inmates with 2 and 3 Strikes

Unservd Warrants	249,018 ^f
Felony Warrants	1,972,678 ^f
Misdemeanor Warrants	2,221,696
Total	2,221,696

Unservd Warrants

Bookings Per Month	96,302 ^f
Juveniles in Custody	95 ^f
Criminal / Illegal Aliens	9,614 ^f
Assaults On Staff	196 ^f

Other Jail Profile Survey Variables

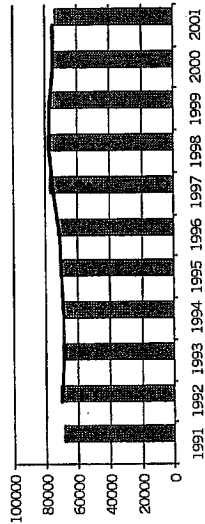
a. The Average Daily Population in all jurisdictions for the days covered by the report.
 b. Unless otherwise indicated, the numbers reported are the average across the number of days covered by the report.
 c. The sum "Under the Roof" is the sum of the Average Daily Population plus the inmates in Holding Areas.
 d. Grand Totals may not be exact sum of the subtotals due to rounding.
 e. The Highest One Day inmate population count across all California jurisdictions.
 f. This number is the average for the quarters represented by the span of time covered by this report.
 g. Total at end of quarter.

Jail Profile Survey

2001

Average Daily Population

10 Year Summary									
1991	1992	1993	1994	1995	1996	1997	1998	1999	2000
68,923	70,853	67,576	69,233	71,107	72,007	76,894	79,143	76,311	74,851

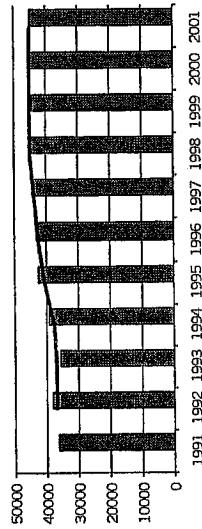


Although the ADP increased this quarter to 74,221, the inmate population is about 850 lower than the first quarter of 2000. The ADP has been hovering in the 74,000 to 76,000 range since 1999 and we expect it to stay there for the foreseeable future. The primary reason is that there are only about 71,000 beds in California jails that meet the BOC standards. Meanwhile, bookings increased this quarter as did the number of sentenced inmates due to lack of jail space. As pressures on the system build, we need to carefully track effects of crowding.

10 Year Summary				
Q1	Q2	Q3	Q4	Average
2000	75,070	75,314	75,076	73,950
2001	74,221			74,221

Non-sentenced ADP

10 Year Summary									
1991	1992	1993	1994	1995	1996	1997	1998	1999	2000
36,064	38,110	35,899	39,122	42,237	42,539	44,593	45,303	44,492	44,922

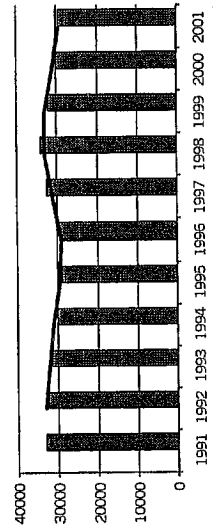


The number of non-sentenced inmates increased by over 600 since the last quarter of 2000. Although the non-sentenced ADP declined somewhat in the 2000 calendar year, the gradual rise in the non-sentenced population that began in 1993 appears to be continuing. This has significant implications for jail operating expenses.

10 Year Summary				
Q1	Q2	Q3	Q4	Average
2000	45,880	44,798	44,764	44,253
2001	44,916			44,916

Sentenced ADP

10 Year Summary									
1991	1992	1993	1994	1995	1996	1997	1998	1999	2000
32,859	32,743	31,677	30,142	28,870	29,468	32,301	33,841	31,819	29,929



The sentenced ADP has been declining since 1998. Between the last quarter of 2000 and first quarter of 2001, the sentenced ADP dropped by about 400 inmates. This decline in sentenced inmates is consistent with the a slight increase in the number of inmates released early due to lack of jail space (1,010 inmates per month in the first quarter of 2001).

10 Year Summary				
Q1	Q2	Q3	Q4	Average
2000	29,190	30,516	30,311	29,697
2001	29,304			29,304

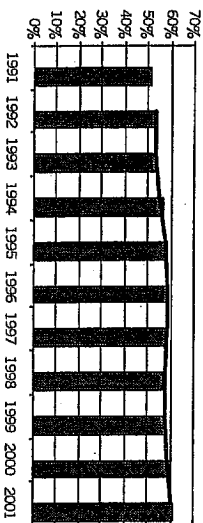
Jail Profile Survey

2001

Percentage Non-sentenced

10 Year Summary										
1991	1992	1993	1994	1995	1996	1997	1998	1999	2000	
52%	54%	53%	57%	59%	59%	58%	57%	58%	60%	

Q1	Q2	Q3	Q4	Average
2000	61%	59%	60%	60%
2001	61%			61%

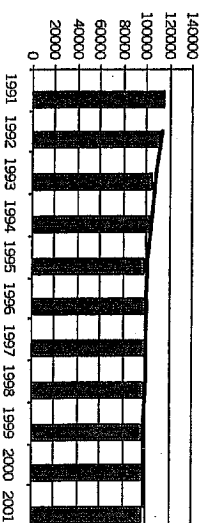


With the non-sentenced ADP rising and the sentenced ADP declining, the obvious result is that the percentage of non-sentenced inmates is growing. The percentage of non-sentenced inmates has increased slightly in each of the last three quarters, with the biggest increase of over a percentage point between the last quarter of 2000 and the first quarter of 2001. Consistent with this finding is that fact that pretrial releases are down slightly from last year.

Average Number of Persons Booked Per Month

10 Year Summary										
1991	1992	1993	1994	1995	1996	1997	1998	1999	2000	
115,313	112,009	105,593	103,996	97,589	101,940	99,182	98,854	96,860	98,102	

Q1	Q2	Q3	Q4	Average
2000	99,151	98,852	101,528	92,896
2001	96,302			96,302

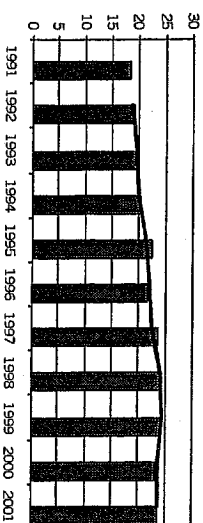


An average of 96,302 persons were booked into jail each month in the first quarter of 2001. After a steady decline in bookings beginning over 10 years ago, the bookings showed a small increase in 2000 when compared with 1999. The 96,302 average bookings was an increase over the last quarter of 2000, but is less than the average for the first quarter of 2000 (99,151). Due to these inconsistent results, the bookings trend line is difficult to discern.

Average Length Of Stay

10 Year Summary										
1991	1992	1993	1994	1995	1996	1997	1998	1999	2000	
18.2	19.2	19.5	20.3	22.3	21.6	23.7	24.4	24.0	23.3	

Q1	Q2	Q3	Q4	Average
2000	23.0	23.1	22.7	24.4
2001	23.6			23.6



The average length of stay has remained in the 23 to 24 day range since 1997. Although the length of stay fluctuates within this range, there is no sign that it will decline in the near future. In fact, over the last decade, the average length of stay has increased by over six days. It will be interesting to see what happens to the average length of stay as the percentage of non-sentenced inmates continues to increase.

Average Daily Population

Non-sentenced / Sentenced Male / Female

California County Jails - For Month Of January - March 2001

Jurisdiction	Non-sentenced				Sentenced				Total		
	Male		Female		Male		Female				
	#	%	#	%	#	%	#	%			
1. Alameda Sheriff's Dept.	2,627	91%	249	9%	747	86%	117	14%	864	23%	3,740
2. Amador Sheriff's Dept.	19	91%	2	9%	23	87%	3	13%	26	55%	47
3. Butte Sheriff's Dept.	278	87%	41	13%	141	85%	26	15%	167	34%	486
4. Calaveras Sheriff's Dept.	19	90%	2	10%	23	85%	4	15%	27	56%	48
5. Colusa Sheriff's Dept.	14	95%	1	5%	18	89%	2	11%	21	59%	35
6. Contra Costa Sheriff's Dept.	1,002	87%	144	13%	519	91%	50	9%	569	33%	1,715
7. Del Norte Sheriff's Dept.	57	86%	9	14%	38	84%	7	16%	46	41%	112
8. El Dorado Sheriff's Dept.	100	88%	14	12%	126	91%	12	9%	138	55%	252
9. Fresno Sheriff's Dept.	1,677	89%	204	11%	403	87%	59	13%	462	20%	2,343
10. Glenn Sheriff's Dept.	46	76%	15	24%	3	100%	0	0%	3	5%	64
11. Humboldt Sheriff's Dept.	208	88%	29	12%	110	86%	18	14%	128	35%	364
12. Imperial Sheriff's Dept.	305	94%	18	6%	162	97%	5	3%	167	34%	490
13. Inyo Sheriff's Dept.	21	91%	2	9%	26	87%	4	13%	30	57%	53
14. Kern Sheriff's Dept.	1,187	90%	138	10%	510	71%	206	29%	715	35%	2,040
15. Kings Sheriff's Dept.	121	83%	25	17%	131	78%	37	22%	168	54%	313
16. Lake Sheriff's Dept.	72	71%	29	29%	94	86%	16	14%	110	52%	210
17. Lassen Sheriff's Dept.	50	77%	15	23%	55	87%	8	13%	63	49%	128
18. Los Angeles Sheriff's Dept.	9,911	89%	1,178	11%	7,047	87%	1,088	13%	8,135	42%	19,224
19. Madera Corrections Dept.	176	86%	30	14%	112	93%	9	7%	121	37%	327
20. Marin Sheriff's Dept.	207	84%	40	16%	31	76%	10	24%	41	14%	288
21. Mariposa Sheriff's Dept.	14	77%	4	23%	19	88%	3	12%	22	54%	40
22. Mendocino Sheriff's Dept.	133	89%	17	11%	94	85%	17	15%	111	43%	261
23. Merced Sheriff's Dept.	344	91%	34	9%	176	92%	15	8%	191	34%	570
24. Modoc Sheriff's Dept.	15	90%	2	10%	12	78%	3	22%	15	48%	32
25. Mono Sheriff's Dept.	11	70%	5	30%	8	70%	4	30%	12	44%	27
26. Monterey Sheriff's Dept.	421	90%	48	10%	408	88%	57	12%	464	50%	933
27. Napa Corrections Dept.	44	88%	6	12%	150	89%	19	11%	168	77%	218
28. Nevada Sheriff's Dept.	69	90%	8	10%	44	81%	10	19%	55	42%	131
29. Oakland Police Dept.	106	83%	22	17%	0	0%	0	0%	0	0%	128
30. Orange Sheriff's Dept.	1,802	88%	238	12%	2,231	85%	408	15%	2,639	56%	4,679
31. Placer Sheriff's Dept.	207	90%	23	10%	162	83%	33	17%	194	46%	424
32. Plumas Sheriff's Dept.	16	75%	5	25%	17	80%	4	20%	22	51%	43
33. Riverside Sheriff's Dept.	1,654	90%	186	10%	749	84%	142	16%	891	33%	2,731
34. Sacramento Sheriff's Dept.	1,558	87%	224	13%	1,225	85%	213	15%	1,438	45%	3,221
35. San Benito Sheriff's Dept.	46	88%	6	12%	36	91%	4	9%	40	44%	92

Average Daily Population

Non-sentenced / Sentenced Male / Female

California County Jails - For Month Of January - March 2001

Jurisdiction	Non-sentenced			Sentenced			Total
	Male	Female	Total	Male	Female	Total	
	#	%	#	%	#	%	#
36. San Bernardino Sheriffs Dept.	3,217	87%	460	13%	3,677	72%	5,083
37. San Diego Probation Dept.	0	0%	0	0%	0	0%	192
38. San Diego Sheriffs Dept.	2,309	86%	388	14%	2,697	60%	4,517
39. San Diego Work/Furlough	6	100%	0	0%	6	4%	147
40. San Francisco Sheriffs Dept.	1,498	87%	215	13%	1,713	94%	1,814
41. San Joaquin Sheriffs Dept.	528	88%	71	12%	600	48%	1,242
42. San Luis Obispo Sheriffs Dept.	122	86%	20	14%	141	37%	377
43. San Mateo Sheriffs Dept.	484	92%	43	8%	527	49%	1,080
44. Santa Ana Police Dept.	298	92%	27	8%	325	94%	344
45. Santa Barbara Sheriffs Dept.	396	87%	60	13%	456	53%	865
46. Santa Clara Corrections Dept.	2,309	90%	260	10%	2,568	61%	4,183
47. Santa Clara Probation Dept.	0	0%	0	0%	0	0%	260
48. Santa Cruz Sheriffs Dept.	224	89%	27	11%	251	42%	596
49. Scapular House	0	0%	0	0%	0	0%	195
50. Shasta Sheriffs Dept.	204	84%	38	16%	242	61%	398
51. Sierra Sheriffs Dept.	2	100%	0	0%	2	70%	3
52. Siskiyou Sheriffs Dept.	51	90%	6	10%	56	62%	91
53. Solano Sheriffs Dept.	532	84%	99	16%	630	71%	893
54. Sonoma Sheriffs Dept.	455	89%	58	11%	514	47%	1,089
55. Stanislaus Sheriffs Dept.	520	88%	70	12%	590	59%	1,008
56. Sutter Sheriffs Dept.	119	91%	12	9%	132	66%	199
57. Tehama Sheriffs Dept.	71	87%	10	13%	81	45%	179
58. Trinity Sheriffs Dept.	14	84%	3	16%	17	47%	35
59. Tulare Sheriffs Dept.	622	91%	63	9%	685	58%	1,185
60. Tuolumne Sheriffs Dept.	53	89%	7	11%	59	48%	123
61. Ventura Sheriffs Dept.	663	87%	100	13%	763	54%	1,404
62. Ventura Work Furlough	0	0%	0	0%	0	0%	130
63. Yolo Sheriffs Dept.	246	84%	47	16%	293	77%	381
64. Yuba Sheriffs Dept.	286	83%	59	17%	345	87%	398
Statewide	39,762	89%	5,154	11%	44,916	61%	74,221

Jail Populations: Quarter 1, 2000 Versus Quarter 1, 2001

Jurisdiction	Qtr 1, 2000	Qtr 1, 2001	Qtr 1, 2001 To Minus Qtr 1, 2000 +/- %	% of Total Increase or Decrease	Cum %	Total
Contra Costa Sheriff's Dept.	1,548	1,715	167	10.8%	14.3%	1
Riverside Sheriff's Dept.	2,587	2,731	144	5.6%	12.3%	31
Yuba Sheriff's Dept.	284	398	114	40.1%	9.7%	425
Ventura Sheriff's Dept.	1,307	1,404	97	7.4%	8.3%	425
Tulare Sheriff's Dept.	1,113	1,185	72	6.5%	6.1%	522
Solano Sheriff's Dept.	830	892	62	7.5%	5.3%	656
Butte Sheriff's Dept.	428	485	57	13.3%	4.9%	713
Kern Sheriff's Dept.	1,989	2,040	51	2.6%	4.4%	764
Fresno Sheriff's Dept.	2,295	2,342	47	2.0%	4.0%	811
Sacramento Sheriff's Dept.	3,176	3,221	45	1.4%	3.8%	856
Madera Corrections Dept.	288	327	39	13.5%	3.3%	895
Humboldt Sheriff's Dept.	327	364	37	11.3%	3.2%	932
San Joaquin Sheriff's Dept.	1,210	1,242	32	2.6%	2.7%	964
Shasta Sheriff's Dept.	366	398	32	8.7%	2.7%	996
San Bernardino Sheriff's Dept.	5,053	5,083	30	0.6%	2.6%	1,026
Mendocino Sheriff's Dept.	235	261	26	11.1%	2.2%	1,052
Scapular House	177	195	18	10.2%	1.5%	1,070
Los Angeles Sheriff's Dept.	19,207	19,225	18	0.1%	1.5%	1,088
Tuolumne Sheriff's Dept.	106	124	18	17.0%	1.5%	1,106
Santa Cruz Sheriff's Dept.	584	697	113	2.2%	1.1%	1,119
Merced Sheriff's Dept.	558	571	13	2.3%	1.1%	1,132
Yolo Sheriff's Dept.	370	382	12	3.2%	1.0%	1,144
Lassen Sheriff's Dept.	121	128	7	5.8%	0.6%	1,151
Amador Sheriff's Dept.	43	48	5	11.6%	0.4%	1,156
Modoc Sheriff's Dept.	27	31	4	14.8%	0.3%	1,160
Napa Corrections Dept.	215	218	3	1.4%	0.3%	1,163
Calaveras Sheriff's Dept.	46	49	3	6.5%	0.3%	1,166
Siskiyou Sheriff's Dept.	89	91	2	2.2%	0.2%	1,168
Mono Sheriff's Dept.	25	27	2	8.0%	0.2%	1,170
Oakland Police Dept.	126	127	1	0.8%	0.1%	1,171
Sonoma Sheriff's Dept.	1,090	1,090	0	0.0%	0.0%	1,171
Mariposa Sheriff's Dept.	40	40	0	0.0%	0.0%	1,171
Sierra Sheriff's Dept.	3	3	0	0.0%	0.0%	1,171
Plumas Sheriff's Dept.	43	43	-1	-2.3%	0.0%	1
Del Norte Sheriff's Dept.	114	112	-2	-1.8%	0.1%	9
Ventura York Furrough	130	130	0	0.0%	0.30%	9
San Diego Probation Dept.	196	192	-4	-2.0%	0.2%	10
Pacific Sheriff's Dept.	429	424	-5	-1.2%	0.2%	15
Marin Sheriff's Dept.	295	289	-6	-2.0%	0.3%	21
Thinky Sheriff's Dept.	42	35	-7	-16.7%	0.3%	28
Lake Sheriff's Dept.	217	210	-7	-3.2%	0.3%	35
San Benito Sheriff's Dept.	99	91	-8	-8.1%	0.4%	43
San Luis Obispo Sheriff's Dept.	387	376	-11	-2.8%	0.5%	54
Inyo Sheriff's Dept.	64	58	-6	-9.4%	0.5%	60
Sutter Sheriff's Dept.	212	199	-13	-6.1%	0.6%	66
El Dorado Sheriff's Dept.	267	252	-15	-5.6%	0.7%	81
Santa Clara Probation Dept.	278	260	-18	-6.5%	0.8%	99
Santa Barbara Sheriff's Dept.	885	865	-20	-2.3%	1.0%	109
Santa Clara Corrections Dept.	4,203	4,201	-2	-0.5%	1.0%	129
Cousa Sheriff's Dept.	57	35	-22	-38.6%	1.1%	172
Nevada Sheriff's Dept.	158	132	-26	-16.5%	1.3%	198
Tehama Sheriff's Dept.	207	179	-28	-13.5%	1.4%	226
Glenn Sheriff's Dept.	105	64	-41	-39.0%	2.0%	267
Kings Sheriff's Dept.	361	314	-47	-13.0%	2.3%	314
Monterey Sheriff's Dept.	982	932	-50	-5.1%	2.5%	364
San Mateo Sheriff's Dept.	1,132	1,080	-52	-4.6%	2.6%	416
Santa Ana Police Dept.	405	344	-61	-15.1%	3.0%	477
Stanislaus Sheriff's Dept.	1,079	1,008	-65	-6.1%	3.2%	542
San Diego Workforce	223	147	-76	-34.1%	3.8%	618
Orange Sheriff's Dept.	4,775	4,679	-96	-2.0%	4.7%	714
Imperial Sheriff's Dept.	631	491	-140	-22.2%	6.9%	854
San Diego Sheriff's Dept.	4,738	4,617	-121	-2.7%	10.9%	1,075
San Francisco Sheriff's Dept.	2,107	1,614	-493	-23.4%	14.5%	1,368
Alameda Sheriff's Dept.	4,396	3,740	-656	-14.9%	32.4%	2,020

Note: Totals subject to slight variation due to rounding

Total Increase: 1,171
Total Decrease: -2,023

75,075
74,223
-852

Interpretation of Table:
JAIL POPULATIONS: 1st Quarter '00 versus 1st Quarter '01

This table:

- summarizes the ADP results for the 64 jurisdictions in California reporting data from Type II, III, and IV jails;
- summarizes jurisdiction ADP results for the most recent quarter (Column B);
- compares jurisdiction ADP for the most recent quarter with the same quarter last year (Column A);
- ranks the jurisdictions in terms of gains or losses in ADP from high to low (Column C);
- lists the percentage growth or decline in ADP for each jurisdiction (Column D);
- lists the percentage of the overall State increase or decrease in ADP that is represented by each jurisdiction (Column E);
- lists, by jurisdiction, the cumulative percentage increase and decrease in the State ADP starting with the jurisdiction with the highest percentage of the increase and proceeding to the jurisdiction with the highest percentage of the decrease (Column F);
- lists, by jurisdiction, the cumulative total increase and decrease in the State ADP starting with the jurisdiction with the highest increase and proceeding to the jurisdiction with the biggest decrease (Column G); and,
- lists the jurisdictions that experienced decreases in their ADP as shaded.

Some important conclusions from this table are:

1. The two numbers at the bottom indicate the "total increase" in ADP (in this case - 1,171) and "total decrease" in ADP (2,023). In other words, the jurisdictions experiencing increases had a total increase of 1,171 ADP; and the jurisdictions experiencing decreases had a total decrease of 2,023 ADP. Subtracting 1,171 from 2,023 produces the overall decrease of 852 between the first quarter of 2000 and the first quarter of 2001.
2. The Contra Costa ADP increase of 167 is 10.8% of the total increase of 1,171. Thirty jurisdictions had increases (down to Oakland Police Department) with three jurisdictions reporting no increase. When you get to Sierra Sheriff's Department, you have accounted for 100% of the increases (100% of the cumulative total of 1,171).
3. Jurisdictions that experienced a decrease in ADP are listed from smallest decrease to largest decrease (Plumas Sheriff's Department to Alameda Sheriff's Department). When you get to the bottom of the table, you have accounted for 100% of the total decreases of 2,023 inmates.
4. The cumulative percentage of ADP increase for the top four jurisdictions (Contra Costa Sheriff's Department to Ventura Sheriff's Department) is 44.6%. In other words, four jurisdictions accounted for about 45% of the total ADP increase. Three jurisdictions (San Diego, San Francisco and Alameda Sheriff's Departments) account for about 58% of the decreases.