

JAIL PROFILE SURVEY

2000, 1st QUARTER SURVEY RESULTS

FACILITIES STANDARDS AND OPERATIONS DIVISION

BOARD OF CORRECTIONS

STATE OF CALIFORNIA
600 Bercut Drive
Sacramento, CA 95814-0185
(916) 445-5073
www.bdcorr.ca.gov

JAIL PROFILE SURVEY

EXPLANATION OF RESULTS

The following pages contain the Jail Profile Survey results for the first quarter of 2000. Page 1 contains the quarterly totals based upon the monthly and quarterly data submitted to us by the participating jurisdictions. Page 2 and 3 show the trend data for variables we have been tracking for the last ten years. The remainder of this page provides explanations and clarifications of the data presented.

Page 1

- Unless otherwise noted, "projected totals" are based upon the average per day for the variable in question. For example, there was an average of 75,070 inmates per day in local jails (excluding Type I's) during the three-month span of January to March 2000.
- For some variables, we did not receive data from all jurisdictions. We compute the percentage of the ADP which were housed in the jurisdictions that did supply us with data. For example, 96% of the jurisdictions, representing 96% of the state's ADP, indicated the number of felony inmates in their facilities. We then projected what the statewide number of felony inmates would have been if we received felony inmate data from the counties that house the remaining 4% of the inmates.
- The number for "Bookings" is the average of the monthly totals for January, February and March.
- For the following variables, the numbers presented are the totals as of the mid-quarter (i.e., February 15, 2000): Pretrial Release, Early Release, 2 and 3 Strikes, Felony Warrants, Misdemeanor Warrants, Juveniles in Custody and Undocumented Aliens.
- Assaults is the total number of serious inmate assaults on staff (resulting in a crime report), statewide, during the first quarter of 2000.

Pages 2 and 3

- The data in the 10-Year Summary tables are based upon survey data which the Board has gathered since the early 1980's.
- Prior to 1995, yearly averages were reported to the Board on an annual basis. Yearly averages from 1996 on have been the average across the 12 calendar months. In 1995, the yearly figure reported is the fourth quarter average, since we do not have data from the first three quarters.

JAIL PROFILE SURVEY

CALIFORNIA COUNTY JAILS - FOR MONTHS OF JANUARY - MARCH 2000

Projected Total

Average Daily Population (ADP)

Highest One Day Count ^a	79,418 ^b
ADP	75,070 ^c
Holding Areas	899
Average "Under the Roof" ^d	75,969 ^e

Categories of Inmates

Felony	52,622
Misdemeanor	21,724
Unspecified	723
Total	75,070
Non-Sentenced Males	40,277
Non-Sentenced Females	5,603
Sentenced Males	25,011
Sentenced Females	4,178
Total	75,070
Maximum Security Inmates	34,709
Medium Security Inmates	20,581
Minimum Security Inmates	19,779
Unspecified	0
Total	75,070

Special Use Beds

Medical Beds	902
Mental Beds	3,010

^a The highest one day inmate population counts in the 64 jurisdictions.

^b Unless otherwise indicated, the numbers reported in this table are an average across the days covered by the report.

^c The Average Daily Population in all jurisdictions is for the days covered by the report.

^d The term "Under the Roof" is the sum of the Average Daily Population plus the inmates in Holding Areas.

Projected Total

Inmates from Other Jurisdictions

Inmates Housed on Federal Contract	4,239
Inmates Housed on Contract with CDC	2,080
Inmates from Other Counties on Contract	7
Inmates Awaiting Transport	1,145
Total	7,472

Number of People Released Per Month Due to Lack of Space

Pretrial Release	4,612
Early Release	10,588
Total	15,201^e

Inmates with 2 and 3 Strikes

2 Strike Inmates	2,915 ^f
3 Strike Inmates	1,993 ^f
Total	4,908^e

Unserviced Warrants

Felony Warrants	248,726 ^f
Misdemeanor Warrants	2,084,443 ^f
Total	2,333,168

Other Jail Profile Survey Variables

Bookings per Month	99,152 ^f
Juveniles in Custody	104 ^f
Undocumented Aliens	8,649 ^f
Assaults	234 ^f

^e Grand totals may not add up exactly to the column totals due to rounding.

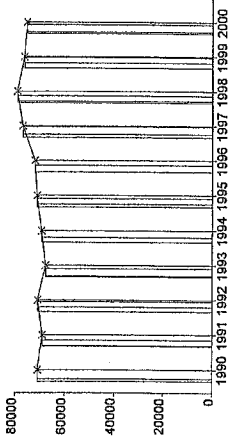
^f This number is the average for the quarters represented by the span of time covered by this report.



Jail Profile Survey

Average Daily Population

10 Year Summary									
1990	1991	1992	1993	1994	1995	1996	1997	1998	1999
70,845	68,923	70,853	67,576	69,233	71,107	72,029	76,906	79,149	76,312



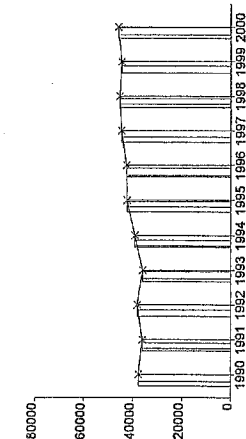
The ADP for the 1st Quarter of the new millennium was 75,065 inmates. This represents a decline of about 500 inmates since the 4th Quarter of 1999, and about a 1,500 inmate decline since the 1st Quarter of 1999. Although the ADP has been gradually decreasing since 1998, we believe that the ADP will continue to fluctuate between 75,000 and 80,000 inmates for the foreseeable future. Unless there are major changes in the State's incarceration policies, the ADP will begin rising again sometime within the next two years due to the effects of the rising California general population. During the time of peak population in the 1st Quarter of 2000, the jail system housed 79,424 inmates. Of course, the capacity of the California jail system will create a de facto ADP ceiling.

Quarterly Results

	Q1	Q2	Q3	Q4	Average
1999	76,567	76,199	76,935	75,548	76,312
2000	75,070				75,070

Non-Sentenced ADP

10 Year Summary									
1990	1991	1992	1993	1994	1995	1996	1997	1998	1999
37,630	36,064	38,110	35,899	39,122	42,237	42,541	44,590	45,303	44,489



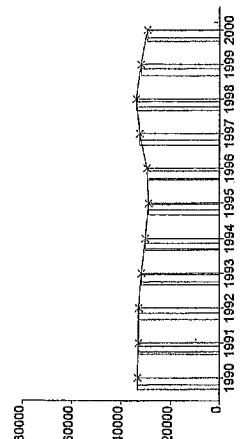
The non-sentenced ADP increased to 45,881, the highest total ever. The 1st Quarter non-sentenced ADP was almost 1,800 inmates higher than the 1st Quarter 1999 ADP, even though the overall ADP declined by 1,500 in the same time period.

Quarterly Results

	Q1	Q2	Q3	Q4	Average
1999	44,087	44,043	45,048	44,777	44,489
2000	45,880				45,880

Sentenced ADP

10 Year Summary									
1990	1991	1992	1993	1994	1995	1996	1997	1998	1999
33,215	32,859	32,743	31,677	30,142	28,870	29,488	32,316	33,846	31,823



The sentenced ADP reached a peak of 33,846 inmates in 1998. In the 1st Quarter of 2000, the sentenced ADP was 29,183, a decrease of over 4,000 inmates from the peak number. There are about 71,000 beds in the jail system that meet the Board of Corrections standards. On the average day in the 1st Quarter of 2000, the ADP exceeded jail capacity by about 4,000 inmates. Since the system is in a constant state of crowding, as the non-sentenced population increases, the sentenced population must decrease, resulting in the early release of sentenced inmates.

Quarterly Results

	Q1	Q2	Q3	Q4	Average
1999	32,480	32,156	31,886	30,772	31,823
2000	29,190				29,190

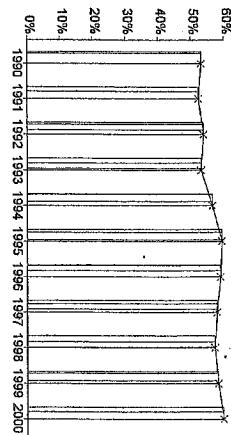
Jail Profile Survey

Percentage Non-Sentenced

10 Year Summary									
1990	1991	1992	1993	1994	1995	1996	1997	1998	1999
53%	52%	54%	53%	57%	59%	59%	58%	57%	58%

Quarterly Results					Average
Q1	Q2	Q3	Q4		
1999	58	58	59	59	58
2000	61				61

As the non-sentenced ADP increases and the sentenced ADP decreases, non-sentenced inmates constitute an ever-increasing percentage of the total ADP. This has many implications for jail management. For example, non-sentenced inmates require more staff time related to court appearances. In the 1st Quarter of 2000, the non-sentenced population reached 61% of the total ADP for the first time in history.

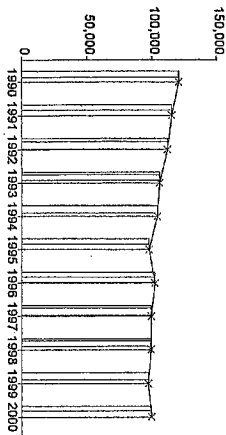


Average Number of Persons Booked Per Month

10 Year Summary									
1990	1991	1992	1993	1994	1995	1996	1997	1998	1999
120,716	115,313	112,009	105,593	103,996	97,589	101,939	99,180	98,915	96,834

Quarterly Results					Average
Q1	Q2	Q3	Q4		
1999	96,666	98,017	100,349	92,302	96,834
2000	99,151				99,151

As can be seen in the graph to the left, the number of persons booked per month has been declining steadily for the last ten years. Therefore, we were surprised to discover that there were an average of 99,131 persons booked per month in the 1st Quarter of 2000. This is the highest average reported since 1997, and represents an average increase per month of about 2,500 bookings when compared to the 4th Quarter of 1999. Obviously, this increase in bookings is an important factor in the increase of non-sentenced inmates.

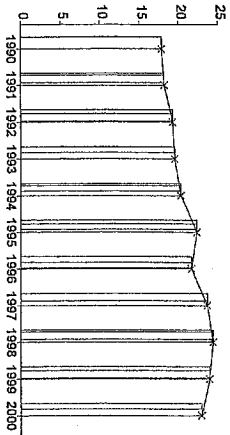


Average Length of Stay

10 Year Summary									
1990	1991	1992	1993	1994	1995	1996	1997	1998	1999
17.9	18.2	19.2	19.5	20.3	22.3	21.6	23.7	24.4	24.0

Quarterly Results					Average
Q1	Q2	Q3	Q4		
1999	23.8	23.6	23.5	25.1	24.0
2000	23.0				23.0

The Average Length of Stay decreased from 25.1 days in the 4th Quarter of 1999 to 23.0 in the 1st Quarter of 2000. This is a fairly large decrease and is consistent with the slight decline in overall ADP coupled with the 7.4% increase in bookings between the 4th Quarter of 1999 and the 1st Quarter of 2000.



**AVERAGE DAILY POPULATION
NON-SENTENCED/SENTENCED MALE/FEMALE
CALIFORNIA COUNTY JAILS - FOR MONTHS OF JANUARY - MARCH 2000**

Jurisdiction	Non-sentenced			Sentenced			Total
	Male	Female	Total	Male	Female	Total	
	#	%	#	%	#	%	
1. Alameda Sheriff's Dept.	2,999	92%	265	8%	3,264	74%	4,396
2. Amador Sheriff's Dept.	15	78%	4	22%	19	44%	43
3. Butte Sheriff's Dept.	281	89%	34	11%	315	74%	427
4. Calaveras Sheriff's Dept.	14	82%	3	18%	17	38%	46
5. Colusa Sheriff's Dept.	20	90%	2	10%	22	39%	57
6. Contra Costa Sheriff's Dept.	917	91%	91	9%	1,008	65%	1,548
7. Del Norte Sheriff's Dept.	60	87%	9	13%	69	60%	114
8. El Dorado Sheriff's Dept.	111	88%	15	12%	126	47%	266
9. Fresno Sheriff's Dept.	1,611	92%	138	8%	1,749	76%	2,295
10. Glenn Sheriff's Dept.	53	60%	35	40%	88	83%	106
11. Humboldt Sheriff's Dept.	202	87%	30	13%	232	71%	327
12. Imperial Sheriff's Dept.	158	50%	158	50%	316	50%	631
13. Inyo Sheriff's Dept.	26	89%	3	11%	29	46%	64
14. Kern Sheriff's Dept.	1,170	89%	142	11%	1,312	66%	1,988
15. Kings Sheriff's Dept.	130	89%	17	11%	147	41%	361
16. Lake Sheriff's Dept.	115	88%	16	12%	131	60%	217
17. Lassen Sheriff's Dept.	52	90%	6	10%	58	48%	121
18. Los Angeles Sheriff's Dept.	10,007	88%	1,343	12%	11,350	59%	19,207
19. Madera Corrections Dept.	126	87%	19	13%	145	50%	287
20. Marin Sheriff's Dept.	209	82%	44	18%	253	86%	295
21. Mariposa Sheriff's Dept.	16	84%	3	16%	19	48%	40
22. Mendocino Sheriff's Dept.	128	90%	14	10%	143	61%	235
23. Merced Sheriff's Dept.	321	90%	35	10%	356	64%	558
24. Modoc Sheriff's Dept.	9	87%	1	13%	10	37%	27
25. Mono Sheriff's Dept.	10	81%	2	19%	12	49%	25
26. Monterey Sheriff's Dept.	535	89%	69	11%	604	61%	982
27. Napa Corrections Dept.	105	90%	12	10%	116	54%	215
28. Nevada Sheriff's Dept.	81	95%	5	5%	85	54%	158
29. Oakland Police Dept.	111	88%	14	12%	125	100%	125
30. Orange Sheriff's Dept.	1,875	89%	238	11%	2,113	44%	4,774
31. Placer Sheriff's Dept.	207	90%	23	10%	230	54%	428
32. Plumas Sheriff's Dept.	24	89%	3	11%	26	59%	44
33. Riverside Sheriff's Dept.	1,637	89%	199	11%	1,837	71%	2,587
34. Sacramento Sheriff's Dept.	1,606	84%	297	16%	1,902	60%	3,176

**AVERAGE DAILY POPULATION
NON-SENTENCED/SENTENCED MALE/FEMALE
CALIFORNIA COUNTY JAILS - FOR MONTHS OF JANUARY - MARCH 2000**

Jurisdiction	Non-sentenced						Sentenced						Total #
	Male		Female		Total		Male		Female		Total		
	#	%	#	%	#	%	#	%	#	%	#	%	
35. San Benito Sheriff's Dept.	52	93%	4	7%	56	57%	36	84%	7	16%	43	43%	99
36. San Bernardino Sheriff's Dept.	3,257	87%	490	13%	3,748	74%	1,057	81%	248	19%	1,305	26%	5,052
37. San Diego Probation Dept.	0	0%	0	0%	0	0%	196	100%	0	0%	196	100%	196
38. San Diego Sheriff's Dept.	2,386	85%	433	15%	2,819	60%	1,600	83%	319	17%	1,919	40%	4,738
39. San Diego WorkFurlough	2	100%	0	0%	2	1%	184	83%	38	17%	222	99%	223
40. San Francisco Sheriff's Dept.	1,742	87%	255	13%	1,997	95%	98	89%	12	11%	110	5%	2,108
41. San Joaquin Sheriff's Dept.	461	88%	63	12%	523	43%	565	82%	121	18%	686	57%	1,210
42. San Luis Obispo Sheriff's Dept.	111	88%	15	12%	126	32%	233	89%	29	11%	262	68%	388
43. San Mateo Sheriff's Dept.	506	92%	42	8%	548	48%	503	86%	81	14%	585	52%	1,132
44. Santa Ana Police Dept.	350	88%	46	12%	396	98%	9	100%	0	0%	9	2%	406
45. Santa Barbara Sheriff's Dept.	389	87%	57	13%	447	50%	386	88%	53	12%	439	50%	885
46. Santa Clara Dept. of Correction	2,229	90%	243	10%	2,472	59%	1,511	87%	221	13%	1,732	41%	4,203
47. Santa Clara Probation Dept.	0	0%	0	0%	0	0%	224	81%	51	19%	276	100%	276
48. Santa Cruz Sheriff's Dept.	220	88%	29	12%	249	43%	298	89%	38	11%	335	57%	584
49. Scapular House	0	0%	0	0%	0	0%	162	92%	15	8%	177	100%	177
50. Shasta Sheriff's Dept.	196	86%	32	14%	227	62%	118	85%	20	15%	138	38%	366
51. Sierra Sheriff's Dept.	2	97%	0	3%	2	47%	2	93%	0	7%	2	53%	3
52. Siskiyou Sheriff's Dept.	50	81%	12	19%	62	69%	24	89%	3	11%	27	31%	89
53. Solano Sheriff's Dept.	490	85%	90	15%	579	70%	219	87%	32	13%	251	30%	830
54. Sonoma Sheriff's Dept.	492	88%	67	12%	558	51%	466	88%	65	12%	531	49%	1,090
55. Stanislaus Sheriff's Dept.	500	89%	63	11%	563	52%	426	83%	85	17%	511	48%	1,073
56. Sutter Sheriff's Dept.	115	86%	19	14%	135	63%	59	76%	19	24%	78	37%	213
57. Tehama Sheriff's Dept.	115	91%	11	9%	126	61%	73	89%	9	11%	81	39%	207
58. Trinity Sheriff's Dept.	16	78%	4	22%	20	49%	19	90%	2	10%	21	51%	41
59. Tulare Sheriff's Dept.	577	90%	64	10%	641	58%	405	86%	66	14%	471	42%	1,113
60. Tuolumne Sheriff's Dept.	35	83%	7	17%	42	39%	55	85%	10	15%	65	61%	107
61. Ventura County Work Furlough	0	0%	0	0%	0	0%	106	80%	26	20%	132	100%	132
62. Ventura Sheriff's Dept.	594	73%	217	27%	811	62%	406	82%	90	18%	495	38%	1,307
63. Yolo Sheriff's Dept.	229	88%	32	12%	261	71%	82	75%	27	25%	109	29%	370
64. Yuba County Sheriff's Dept.	225	92%	20	8%	245	86%	34	87%	5	13%	40	14%	284
Statewide	40,277	88%	5,603	12%	45,880	61%	25,011	86%	4,178	14%	29,190	39%	75,070

** Jurisdictions which have not yet been updated for the month(s) in question
Column totals may not add up to the grand total due to rounding

JAIL POPULATIONS: 1st QUARTER '99 VERSUS 1st QUARTER '00

Jurisdiction	1999 Qtr. 1	2000 Qtr. 1	Qtr. 1, 00 minus Qtr. 4, 99	Qtr. 1, 99 to Qtr. 1, 00 % Change	% of Total Increase or Decrease	Cum %	Cum Total
San Bernardino Sheriffs Dept.	4,833	5,052	219	4.5%	16.8%	16.79%	219
Alameda Sheriff's Dept.	4,216	4,396	180	4.3%	13.8%	30.60%	399
Oakland Police Dept.		125	125		9.6%	40.18%	524
Imperial Sheriff's Dept.	561	631	70	12.5%	5.4%	45.55%	594
Fresno Sheriff's Dept.	2,227	2,295	68	3.1%	5.2%	50.77%	662
Madera Corrections Dept.	234	287	53	22.6%	4.1%	54.83%	715
Stanislaus Sheriff's Dept.	1,021	1,073	52	5.1%	4.0%	58.82%	767
Placer Sheriff's Dept.	377	428	51	13.5%	3.9%	62.73%	818
Kings Sheriff's Dept.	311	361	50	16.1%	3.8%	66.56%	868
Solano Sheriff's Dept.	780	830	50	6.4%	3.8%	70.40%	918
San Francisco Sheriff's Dept.	2,070	2,108	38	1.8%	2.9%	73.31%	956
Lake Sheriff's Dept.	181	217	36	19.9%	2.8%	76.07%	992
Mendocino Sheriff's Dept.	200	235	35	17.5%	2.7%	78.76%	1,027
Merced Sheriff's Dept.	525	558	33	6.3%	2.5%	81.29%	1,060
Shasta Sheriff's Dept.	338	366	28	8.3%	2.1%	83.44%	1,088
Napa Corrections Dept.	187	215	28	15.0%	2.1%	85.58%	1,116
Contra Costa Sheriff's Dept.	1,520	1,548	28	1.8%	2.1%	87.73%	1,144
Del Norte Sheriff's Dept.	87	114	27	31.0%	2.1%	89.80%	1,171
Glenn Sheriff's Dept.	81	106	25	30.9%	1.9%	91.72%	1,196
Santa Ana Police Dept.	386	406	20	5.2%	1.5%	93.25%	1,216
Marin Sheriff's Dept.	277	295	18	6.5%	1.4%	94.63%	1,234
Nevada Sheriff's Dept.	142	158	16	11.3%	1.2%	95.86%	1,250
San Luis Obispo Sheriff's Dept.	373	388	15	4.0%	1.2%	97.01%	1,265
Humboldt Sheriff's Dept.	313	327	14	4.5%	1.1%	98.08%	1,279
Santa Clara Probation Dept.	264	276	12	4.5%	0.9%	99.00%	1,291
San Benito Sheriff's Dept.	92	99	7	7.6%	0.5%	99.54%	1,298
Tehama Sheriff's Dept.	204	207	3	1.5%	0.2%	99.77%	1,301
Siskiyou Sheriff's Dept.	87	89	2	2.3%	0.2%	99.92%	1,303
Sierra Sheriffs Dept.	2	3	1	50.0%	0.1%	100.00%	1,304
Butte Sheriff's Dept.	427	427	0	0.0%	0.0%	100.00%	1,304
Mono Sheriff's Dept.	25	25	0	0.0%	0.0%	100.00%	1,304
Sutter Sheriff's Dept.	214	213	(1)	-0.5%	-0.0%	0.04%	(1)
Lassen Sheriff's Dept.	120	116	(4)	-3.3%	0.1%	0.18%	(5)
Trinity Sheriff's Dept.	46	41	(5)	-10.9%	0.2%	0.36%	(10)
Monterey Sheriff's Dept.	987	982	(5)	-0.5%	0.2%	0.53%	(15)
Modoc Sheriff's Dept.	33	27	(6)	-18.2%	0.2%	0.75%	(21)
Calaveras Sheriff's Dept.	53	46	(7)	-13.2%	0.2%	1.00%	(28)
San Joaquin Sheriff's Dept.	1,218	1,210	(8)	-0.7%	0.3%	1.28%	(36)
Tuolumne Sheriff's Dept.	115	107	(8)	-7.0%	0.3%	1.57%	(44)
Yuba County Sheriff's Dept.	293	284	(9)	-3.1%	0.3%	1.89%	(53)
Inyo Sheriff's Dept.	74	64	(10)	-13.5%	0.4%	2.25%	(63)
Mariposa Sheriff's Dept.	50	40	(10)	-20.0%	0.4%	2.60%	(73)
Santa Cruz Sheriff's Dept.	594	584	(10)	-1.7%	0.4%	2.96%	(83)
Amador Sheriff's Dept.	54	43	(11)	-20.4%	0.4%	3.35%	(94)
Plumas Sheriff's Dept.	56	44	(12)	-21.4%	0.4%	3.78%	(106)
Ventura County Work Furlough	144	132	(12)	-8.3%	0.4%	4.21%	(118)
Colusa Sheriff's Dept.	72	57	(15)	-20.8%	0.5%	4.74%	(133)
Sonoma Sheriff's Dept.	1,107	1,090	(17)	-1.5%	0.6%	5.35%	(150)
El Dorado Sheriff's Dept.	289	266	(23)	-8.0%	0.8%	6.17%	(173)
Yolo Sheriff's Dept.	398	370	(28)	-7.0%	1.0%	7.17%	(201)
Tulare Sheriff's Dept.	1,144	1,113	(31)	-2.7%	1.1%	8.27%	(232)
San Diego Work Furlough	256	223	(33)	-12.9%	1.2%	9.45%	(265)
Kern Sheriff's Dept.	2,035	1,988	(47)	-2.3%	1.7%	11.12%	(312)
Riverside Sheriff's Dept.	2,634	2,587	(47)	-1.8%	1.7%	12.80%	(359)
Scapular House	228	177	(51)	-22.4%	1.8%	14.62%	(410)
Santa Barbara Sheriff's Dept.	944	885	(59)	-6.3%	2.1%	16.72%	(469)
Sacramento Sheriff's Dept.	3,245	3,176	(69)	-2.1%	2.5%	19.18%	(538)
San Diego Probation Dept.	281	196	(85)	-30.2%	3.0%	22.21%	(623)
Ventura Sheriff's Dept.	1,419	1,307	(112)	-7.9%	4.0%	26.20%	(735)
San Mateo Sheriff's Dept.	1,246	1,132	(114)	-9.1%	4.1%	30.27%	(849)
Santa Clara Dept. of Correction	4,411	4,203	(208)	-4.7%	7.4%	37.68%	(1,057)
Orange Sheriff's Dept.	5,017	4,774	(243)	-4.8%	8.7%	46.35%	(1,300)
San Diego Sheriff's Dept.	5,029	4,738	(291)	-5.8%	10.4%	56.72%	(1,591)
Los Angeles Sheriff's Dept.	20,421	19,207	(1,214)	-5.9%	43.3%	100.00%	(2,805)
	76,568	75,067	(1,501)				
		Total increase	1,304				
		Total decrease	(2,805)				

Note: Totals subject to slight variations due to rounding

**Interpretation of Table:
JAIL POPULATIONS: 1st Quarter '99 versus 1st Quarter '00**

This table:

- summarizes the ADP results for the 64 jurisdictions in California reporting data from Type II, III, and IV jails;
- summarizes jurisdiction ADP results for the most recent quarter (Column B);
- compares jurisdiction ADP for the most recent quarter with the same quarter last year (Column A);
- ranks the jurisdictions in terms of gains or losses in ADP from high to low (Column C);
- lists the percentage growth or decline in ADP for each jurisdiction (Column D);
- lists the percentage of the overall State increase or decrease in ADP that is represented by each jurisdiction (Column E);
- lists, by jurisdiction, the cumulative percentage increase and decrease in the State ADP starting with the jurisdiction with the highest percentage of the increase and proceeding to the jurisdiction with the highest percentage of the decrease (Column F);
- lists, by jurisdiction, the cumulative total increase and decrease in the State ADP starting with the jurisdiction with the highest increase and proceeding to the jurisdiction with the biggest decrease (Column G); and,
- lists the jurisdictions that experienced decreases in their ADP as shaded.

Some important conclusions from this table are:

1. The two numbers at the bottom indicate the "total increase" in ADP (in this case - 1,304) and "total decrease" in ADP (2,805). In other words, the jurisdictions experiencing increases had a total increase of 1,304 ADP; and the jurisdictions experiencing decreases had a total decrease of 2,805 ADP. Subtracting 1,304 from 2,805 produces the overall decrease of 1,501 between the first quarter of 1999 and the first quarter of 2000.
2. The San Bernardino ADP increase of 219 is 16.8% of the total increase of 1,304. Thirty-one jurisdictions had increases (down to Mono Sheriff's Department). When you get to Mono Sheriff's Department, you have accounted for 100% of the increases (100% of the cumulative total of 1,304).
3. Jurisdictions that experienced a decrease in ADP are listed from smallest decrease to largest decrease (Sutter Sheriff's Department to Los Angeles Sheriff's Department). When you get to the bottom of the table, you have accounted for 100% of the total decreases of 2,805 inmates.
4. The cumulative percentage of ADP increase for the top four jurisdictions (San Bernardino Sheriff's Department to Imperial Sheriff's Department) is 45.55%. In other words, four jurisdictions accounted for about 46% of the total ADP increase. Three counties (Orange, San Diego, and Los Angeles) account for about 62% of the decreases.