

# JAIL PROFILE SURVEY

## 1999, 1st QUARTER SURVEY RESULTS

FACILITIES STANDARDS AND OPERATIONS DIVISION

BOARD OF CORRECTIONS

STATE OF CALIFORNIA  
600 Bercut Drive  
Sacramento, CA 95814-0185  
(916) 445-5073

# JAIL PROFILE SURVEY

## EXPLANATION OF RESULTS

The following pages contain the Jail Profile Survey results for the first quarter of 1999. Page 1 contains the quarterly totals based upon the monthly and quarterly data submitted to us by the participating jurisdictions. Page 2 and 3 show the trend data for variables we have been tracking for the last ten years. The remainder of this page provides explanations and clarifications of the data presented.

### Page 1

- Unless otherwise noted, "projected totals" are based upon the average per day for the variable in question. For example, there was an average of 76,567 inmates per day in local jails (excluding Type 1's) during the three-month span of January to March 1999.
- For some variables, we did not receive data from all jurisdictions. We compute the percentage of the ADP which were housed in the jurisdictions that did supply us with data. For example, 96% of the jurisdictions, representing 96% of the state's ADP, indicated the number of felony inmates in their facilities. We then projected what the statewide number of felony inmates would have been if we received felony inmate data from the counties that house the remaining 4% of the inmates.
- The number for "Bookings" is the average of the monthly totals for January, February and March.
- For the following variables, the numbers presented are the totals as of the mid-quarter (i.e., February 15, 1999): Pretrial Release, Early Release, 2 and 3 Strikes, Felony Warrants, Misdemeanor Warrants, Juveniles in Custody and Undocumented Aliens.
- Assaults is the total number of serious inmate assaults on staff (resulting in a crime report), statewide, during the first quarter of 1999.

### Pages 2 and 3

- The data in the 10-Year Summary tables are based upon survey data which the Board has gathered since the early 1980's.
- Prior to 1995, yearly averages were reported to the Board on an annual basis. Yearly averages from 1996 on have been the average across the 12 calendar months. In 1995, the yearly figure reported is the fourth quarter average, since we do not have data from the first three quarters.

# JAIL PROFILE SURVEY CALIFORNIA COUNTY JAILS - FOR MONTHS OF JANUARY - MARCH 1999

Average Daily Population (ADP)	Projected Total
Highest One Day Count <sup>a</sup>	80,291 <sup>b</sup>
ADP	76,567 <sup>c</sup>
Holding Areas	853
Average "Under the Roof" <sup>d</sup>	77,420 <sup>e</sup>

Inmates from Other Jurisdictions	Projected Total
Inmates Housed on Federal Contract	3,922
Inmates Housed on Contract with CDC	1,925
Inmates from Other Counties on Contract	30
Inmates Awaiting Transport	1,220
<b>Total</b>	<b>7,097</b>

### Categories of Inmates

Felony	54,169
Misdemeanor	21,228
Unspecified	1,170
<b>Total</b>	<b>76,567</b>
Non-Sentenced Males	38,892
Non-Sentenced Females	5,195
Sentenced Males	27,662
Sentenced Females	4,819
<b>Total</b>	<b>76,567</b>
Maximum Security Inmates	35,068
Medium Security Inmates	19,747
Minimum Security Inmates	21,579
Unspecified	173
<b>Total</b>	<b>76,567</b>

### Special Use Beds

Medical Beds	965
Mental Beds	2,469

<sup>a</sup> The highest one day inmate population counts in the 63 jurisdictions.

<sup>b</sup> Unless otherwise indicated, the numbers reported in this table are an average across the days covered by the report.

<sup>c</sup> The Average Daily Population in all jurisdictions is for the days covered by the report.

<sup>d</sup> The term "Under the Roof" is the sum of the Average Daily Population plus the inmates in Holding Areas.

### Number of People Released Per Month Due to Lack of Space

Pretrial Release	6,037
Early Release	11,645
<b>Total</b>	<b>17,682<sup>e</sup></b>

### Inmates with 2 and 3 Strikes

2 Strike Inmates	3,187 <sup>f</sup>
3 Strike Inmates	2,119 <sup>f</sup>
<b>Total</b>	<b>5,307<sup>e</sup></b>

### Unservd Warrants

Felony Warrants	238,037 <sup>f</sup>
Misdemeanor Warrants	2,230,244 <sup>f</sup>
<b>Total</b>	<b>2,468,281</b>

### Other Jail Profile Survey Variables

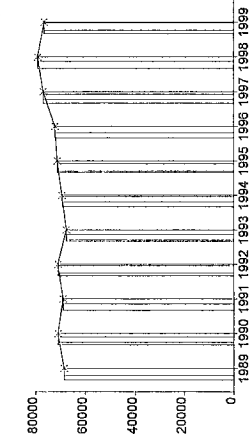
Bookings per Month	96,666 <sup>f</sup>
Juveniles in Custody	86 <sup>f</sup>
Undocumented Aliens	7,535 <sup>f</sup>
Assaults	224 <sup>f</sup>

<sup>e</sup> Grand totals may not add up exactly to the column totals due to rounding.

<sup>f</sup> This number is the average for the quarters represented by the span of time covered by this report.

**Average Daily Population**

10 Year Summary										
	1989	1990	1991	1992	1993	1994	1995	1996	1997	1998
	68,535	70,845	68,923	70,853	67,576	69,233	71,107	72,029	76,906	79,149



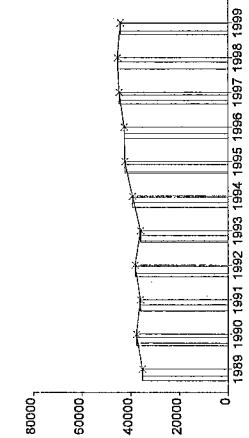
The ADP for the first quarter of 1999 is slightly lower than the ADP for 1997. After a five-year steady increase, the ADP peaked in the second quarter of 1998 at 80,391, and has been declining since then. The ADP dropped by another 400 inmates in the first quarter of 1999. We do not believe the decline in ADP will continue as a major trend. Bookings are up, pretrial and early releases are unchanged, the California general population continues to grow, over 2.5 million warrants are unserved, the average length of stay is the same as in 1997. Therefore, there is no reason to expect the ADP to continue to go down. More likely, we keep bumping up against the jail-capacity ceiling, and the ADP will continue to stay below 80,000 inmates until jail capacity is significantly increased.

**Quarterly Results**

	Q1	Q2	Q3	Q4	Average
1998	79,620	80,391	79,639	76,948	79,149
1999	76,567				76,567

**Non-Sentenced ADP**

10 Year Summary										
	1989	1990	1991	1992	1993	1994	1995	1996	1997	1998
	35,264	37,630	36,064	38,110	35,899	39,122	42,237	42,541	44,590	45,303



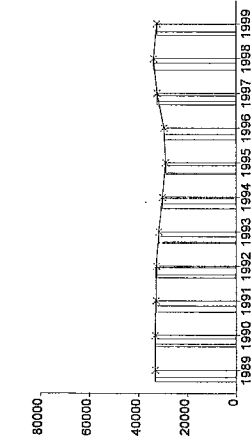
The ADP for the first quarter of 1999 is 3,053 inmates lower than the ADP for the first quarter of 1998. The non-sentenced ADP declined by 1,196 inmates (a 2.6% decrease), and the sentenced inmates declined by 1,857 inmates (a 5.4% decrease).

**Quarterly Results**

	Q1	Q2	Q3	Q4	Average
1998	45,283	45,575	46,069	44,286	45,303
1999	44,087				44,087

**Sentenced ADP**

10 Year Summary										
	1989	1990	1991	1992	1993	1994	1995	1996	1997	1998
	33,271	33,215	32,859	32,743	31,677	30,142	28,870	29,488	32,316	33,846



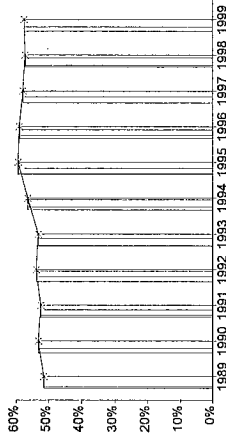
As discussed above, the sentenced ADP has been declining faster than non-sentenced inmates in the past 12 months. We will pay close attention to this potential trend, because of the serious issues that arise when there is a significant shift in the ratio of non-sentenced to sentenced inmates. However, recent differences between sentenced and non-sentenced changes in ADP have not yet had a major effect on the fairly stable sentenced/non-sentenced ratio.

**Quarterly Results**

	Q1	Q2	Q3	Q4	Average
1998	34,337	34,816	33,570	32,662	33,846
1999	32,480				32,480

Percentage Non-Sentenced

10 Year Summary										
	1989	1990	1991	1992	1993	1994	1995	1996	1997	1998
	51%	53%	52%	54%	53%	57%	59%	59%	58%	57%



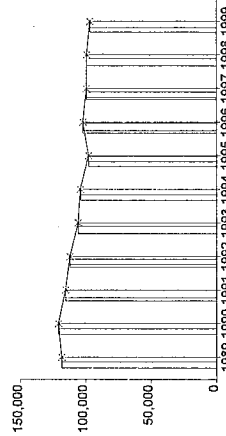
The percentage of non-sentenced inmates has hovered around 58% since 1994. With the disproportionate decline in the sentenced ADP in the past year, the non-sentenced population may be on the verge of an increase. Time will tell if there is an actual trend in that direction. An alternate possibility is that we are simply gaining more experience concerning normal quarter-to-quarter, and year-to-year fluctuations that can be expected during a period of relatively stable Average Daily Populations.

Quarterly Results

	Q1	Q2	Q3	Q4	Average
1998	57	57	58	58	57
1999	58				58

Average Number of Persons Booked Per Month

10 Year Summary										
	1989	1990	1991	1992	1993	1994	1995	1996	1997	1998
	118,253	120,716	115,313	112,009	105,593	103,996	97,589	101,939	99,180	98,915



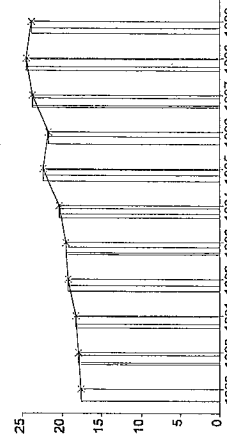
This number seems to vary quite a bit from quarter-to-quarter. The number of bookings for the first quarter of 1999 is about 1% lower than the number for the first quarter of 1998. Nevertheless, the bookings will likely increase in the second and third quarters of 1999. Therefore, the yearly average is probably the best gauge of whether bookings are going up or down. Based on the first quarter numbers, there will probably be little change in the number of bookings in 1999.

Quarterly Results

	Q1	Q2	Q3	Q4	Average
1998	97,687	100,754	102,148	95,070	98,915
1999	96,666				96,666

Average Length of Stay

10 Year Summary										
	1989	1990	1991	1992	1993	1994	1995	1996	1997	1998
	17.6	17.9	18.2	19.2	19.5	20.3	22.3	21.6	23.7	24.4



The Average Length of Stay for the first quarter is 1 day less than for the fourth quarter of 1998. Therefore, it has declined to the 1997 level. It is interesting that the overall ADP, sentenced ADP, and non-sentenced ADP are also very close to the 1997 levels. This suggests that with jail capacity remaining constant, Average Length of Stay might be a more accurate predictor of ADP than we had expected. We will be exploring the reliability of this relationship and how it might be used to better predict jail populations.

Quarterly Results

	Q1	Q2	Q3	Q4	Average
1998	24.7	24.2	24.0	24.8	24.4
1999	23.8				23.8

**AVERAGE DAILY POPULATION  
NON-SENTENCED/SENTENCED MALE/FEMALE  
CALIFORNIA COUNTY JAILS - FOR MONTHS OF JANUARY - MARCH 1999**

Jurisdiction	Non-sentenced						Sentenced						Total
	Male		Female		Total		Male		Female		Total		
	#	%	#	%	#	%	#	%	#	%	#	%	
1. Alameda Sheriff's Dept.	2,807	91%	262	9%	3,069	73%	962	84%	185	16%	1,147	27%	4,216
2. Amador Sheriff's Dept.	19	86%	3	14%	22	41%	30	93%	2	7%	32	59%	54
3. Butte Sheriff's Dept.	247	87%	36	13%	283	66%	115	80%	29	20%	144	34%	427
4. Calaveras Sheriff's Dept.	15	89%	2	11%	17	32%	33	90%	4	10%	37	68%	53
5. Colusa Sheriff's Dept.	30	93%	2	7%	32	45%	37	93%	3	7%	40	55%	72
6. Contra Costa Sheriff's Dept.	986	88%	130	12%	1,117	73%	356	88%	47	12%	403	27%	1,520
7. Del Norte Sheriff's Dept.	40	84%	7	16%	48	55%	32	80%	8	20%	40	45%	87
8. El Dorado Sheriff's Dept.	107	88%	14	12%	122	42%	149	89%	18	11%	167	58%	289
9. Fresno Sheriff's Dept.	1,542	89%	188	11%	1,730	78%	446	90%	50	10%	497	22%	2,227
10. Glenn Sheriff's Dept.	43	75%	14	25%	57	71%	21	89%	3	11%	24	29%	81
11. Humboldt Sheriff's Dept.	216	87%	31	13%	247	79%	55	84%	10	16%	66	21%	313
12. Imperial Sheriff's Dept.	140	50%	140	50%	280	50%	140	50%	140	50%	280	50%	561
13. Inyo Sheriff's Dept.	22	82%	5	18%	26	36%	37	78%	11	22%	47	64%	74
14. Kern Sheriff's Dept.	965	84%	177	16%	1,142	56%	752	84%	142	16%	893	44%	2,035
15. Kings Sheriff's Dept.	91	93%	7	7%	97	31%	186	87%	28	13%	214	69%	311
16. Lake Sheriff's Dept.	77	89%	9	11%	86	48%	77	81%	18	19%	95	52%	181
17. Lassen Sheriff's Dept.	46	83%	10	17%	56	47%	48	75%	16	25%	63	53%	120
18. Los Angeles Sheriff's Dept.	10,293	90%	1,181	10%	11,474	56%	7,701	86%	1,246	14%	8,948	44%	20,421
19. Madera Corrections Dept.	93	87%	14	13%	107	46%	118	93%	10	7%	127	54%	234
20. Marin Sheriff's Dept.	185	86%	30	14%	215	78%	48	78%	14	22%	62	22%	277
21. Mariposa Sheriff's Dept.	27	92%	2	8%	30	60%	17	85%	3	15%	20	40%	50
22. Mendocino Sheriff's Dept.	105	90%	12	10%	117	59%	72	87%	11	13%	82	41%	200
23. Merced Sheriff's Dept.	263	92%	24	8%	287	55%	210	88%	28	12%	238	45%	525
24. Modoc Sheriff's Dept.	11	82%	2	18%	13	39%	15	77%	5	23%	20	61%	33
25. Mono Sheriff's Dept.	9	94%	1	6%	10	38%	13	86%	2	14%	16	62%	25
26. Monterey Sheriff's Dept.	560	90%	63	10%	623	63%	319	88%	45	12%	364	37%	987
27. Napa Corrections Dept.	120	90%	14	10%	134	72%	47	89%	6	11%	53	28%	187
28. Nevada Sheriff's Dept.	80	88%	11	12%	91	64%	45	88%	6	12%	51	36%	142
29. Orange Sheriff's Dept.	1,889	90%	215	10%	2,104	42%	2,461	84%	452	16%	2,913	58%	5,017
30. Placer Sheriff's Dept.	167	89%	20	11%	187	50%	157	83%	32	17%	190	50%	377
31. Plumas Sheriff's Dept.	24	89%	3	11%	26	47%	27	92%	2	8%	29	53%	56
32. Riverside Sheriff's Dept.	1,666	89%	204	11%	1,870	71%	663	87%	101	13%	764	29%	2,634
33. Sacramento Sheriff's Dept.	1,504	84%	287	16%	1,791	55%	1,207	83%	248	17%	1,454	45%	3,245
34. San Benito Sheriff's Dept.	38	90%	4	10%	42	46%	45	92%	4	8%	49	54%	92

**AVERAGE DAILY POPULATION  
NON-SENTENCED/SENTENCED MALE/FEMALE  
CALIFORNIA COUNTY JAILS - FOR MONTHS OF JANUARY - MARCH 1999**

Jurisdiction	Non-sentenced						Sentenced						Total
	Male		Female		Total	Male		Female		Total			
	#	%	#	%		#	%	#	%				
35. San Bernardino Sheriff's Dept.	3,065	87%	460	13%	3,525	73%	1,087	83%	222	17%	1,308	27%	4,833
36. San Diego Probation Dept.	0	0%	0	0%	0	0%	281	100%	0	0%	281	100%	281
37. San Diego Sheriff's Dept.	2,442	83%	500	17%	2,942	59%	1,726	83%	360	17%	2,086	41%	5,029
38. San Diego WorkFurlough	1	42%	1	58%	3	1%	204	80%	50	20%	254	99%	256
39. San Francisco Sheriff's Dept.	1,361	91%	134	9%	1,495	72%	490	85%	86	15%	576	28%	2,070
40. San Joaquin Sheriff's Dept.	450	85%	78	15%	528	43%	574	83%	116	17%	690	57%	1,218
41. San Luis Obispo Sheriff's Dept.	107	89%	13	11%	120	32%	221	87%	32	13%	253	68%	373
42. San Mateo Sheriff's Dept.	513	91%	48	9%	561	45%	589	86%	96	14%	685	55%	1,246
43. Santa Ana Police Dept.	335	88%	44	12%	379	98%	5	84%	1	16%	6	2%	386
44. Santa Barbara Sheriff's Dept.	376	87%	54	13%	430	46%	443	86%	71	14%	514	54%	944
45. Santa Clara Dept. of Correction	2,260	91%	229	9%	2,489	56%	1,668	87%	255	13%	1,923	44%	4,411
46. Santa Clara Probation Dept.	0	0%	0	0%	0	0%	214	81%	50	19%	264	100%	264
47. Santa Cruz Sheriff's Dept.	201	90%	23	10%	224	38%	323	87%	47	13%	370	62%	594
48. Scapular House	0	0%	0	0%	0	0%	203	89%	25	11%	228	100%	228
49. Shasta Sheriff's Dept.	176	86%	29	14%	205	61%	114	86%	19	14%	133	39%	338
50. Sierra Sheriff's Dept.	1	98%	0	2%	1	54%	1	100%	0	0%	1	46%	2
51. Siskiyou Sheriff's Dept.	40	79%	10	21%	50	57%	34	91%	3	9%	37	43%	87
52. Solano Sheriff's Dept.	419	85%	72	15%	491	63%	258	89%	30	11%	289	37%	780
53. Sonoma Sheriff's Dept.	497	88%	69	12%	566	51%	475	88%	67	12%	541	49%	1,107
54. Stanislaus Sheriff's Dept.	431	88%	56	12%	488	48%	445	83%	88	17%	533	52%	1,021
55. Sutter Sheriff's Dept.	95	84%	18	16%	114	53%	84	84%	16	16%	100	47%	214
56. Tehama Sheriff's Dept.	0	0%	0	0%	0	0%	183	90%	21	10%	204	100%	204
57. Trinity Sheriff's Dept.	15	79%	4	21%	19	41%	23	84%	4	16%	27	59%	46
58. Tulare Sheriff's Dept.	495	89%	63	11%	559	49%	503	86%	83	14%	585	51%	1,144
59. Tuolumne Sheriff's Dept.	35	82%	8	18%	42	37%	61	84%	12	16%	73	63%	115
60. Ventura County Work Furlough	0	0%	0	0%	0	0%	113	78%	31	22%	144	100%	144
61. Ventura Sheriff's Dept.	681	90%	76	10%	757	53%	577	87%	85	13%	662	47%	1,419
62. Yolo Sheriff's Dept.	242	82%	54	18%	296	74%	85	83%	17	17%	102	26%	398
63. Yuba County Sheriff's Dept.	225	90%	24	10%	249	85%	39	89%	5	11%	43	15%	293
<b>Statewide</b>	<b>38,892</b>	<b>88%</b>	<b>5,195</b>	<b>12%</b>	<b>44,087</b>	<b>58%</b>	<b>27,662</b>	<b>85%</b>	<b>4,819</b>	<b>15%</b>	<b>32,480</b>	<b>42%</b>	<b>76,567</b>

\*\* Jurisdictions which have not yet been updated for the month(s) in question  
Column totals may not add up to the grand total due to rounding

JAIL POPULATIONS: 1st QUARTER '98 VERSUS 1st QUARTER '99

Jurisdiction	1998 Qtr 1	1999 Qtr 1	1999 Qtr 1 minus 1998 Qtr 1	Increase or Decrease or Percent +/-	Percent of Total Change	Cumulative Percent	Total
San Francisco Sheriff's Dept.	1,874	2,070	196	10.5%	28.0%	28.04%	196
Sonoma Sheriff's Dept.	993	1,107	114	11.5%	16.3%	44.35%	310
San Mateo Sheriff's Dept.	1,139	1,246	107	9.4%	15.3%	59.66%	417
Fresno Sheriff's Dept.	2,175	2,227	52	2.4%	7.4%	67.10%	469
San Joaquin Sheriff's Dept.	1,168	1,218	50	4.3%	7.2%	74.25%	519
San Diego Workforce Dept.	207	256	49	23.7%	7.0%	81.26%	568
Ventura Sheriff's Dept.	1,371	1,419	48	3.5%	6.9%	88.13%	616
Yolo Sheriff's Dept.	373	398	25	6.7%	3.6%	91.70%	641
Scapular House	216	228	12	5.6%	1.7%	93.42%	653
Lassen Sheriff's Dept.	108	120	12	11.1%	1.7%	95.14%	665
Butte Sheriff's Dept.	418	427	9	2.2%	1.3%	96.42%	674
Plumas Sheriff's Dept.	48	56	8	16.7%	1.1%	97.57%	682
Kern Sheriff's Dept.	2,027	2,035	8	0.4%	1.1%	98.71%	690
Tehama Sheriff's Dept.	202	204	2	1.0%	0.3%	99.00%	692
Mono Sheriff's Dept.	23	25	2	8.7%	0.3%	99.28%	694
Merced Sheriff's Dept.	523	525	2	0.4%	0.3%	99.57%	696
Amador Sheriff's Dept.	52	54	2	3.8%	0.3%	99.86%	698
Siskiyou Sheriff's Dept.	86	87	1	1.2%	0.0%	100.00%	699
Colusa Sheriff's Dept.	72	72	-	0.0%	0.0%	-	-
Tuolumne Sheriff's Dept.	116	115	(1)	-0.9%	0.0%	0.03%	(1)
Inyo Sheriff's Dept.	75	74	(1)	-1.3%	0.0%	0.05%	(2)
Calaveras Sheriff's Dept.	54	53	(1)	-1.9%	0.0%	0.08%	(3)
Mariposa Sheriff's Dept.	54	50	(4)	-7.4%	0.1%	0.19%	(7)
Marin Sheriff's Dept.	281	277	(4)	-1.4%	0.1%	0.29%	(11)
Trinity Sheriff's Dept.	51	46	(5)	-9.8%	0.1%	0.43%	(16)
Sierra Sheriff's Dept.	9	2	(7)	-77.8%	0.2%	0.61%	(23)
Nevada Sheriff's Dept.	149	142	(7)	-4.7%	0.2%	0.80%	(30)
Glenn Sheriff's Dept.	88	81	(7)	-8.0%	0.2%	0.99%	(37)
Modoc Sheriff's Dept.	41	33	(8)	-19.5%	0.2%	1.20%	(45)
Santa Ana Police Dept.	398	386	(12)	-3.0%	0.3%	1.52%	(57)
Humboldt Sheriff's Dept.	325	313	(12)	-3.7%	0.3%	1.84%	(69)
Shasta Sheriff's Dept.	351	338	(13)	-3.7%	0.3%	2.18%	(82)
San Benito Sheriff's Dept.	106	92	(14)	-13.2%	0.4%	2.56%	(96)
Lake Sheriff's Dept.	197	181	(16)	-8.1%	0.4%	2.98%	(112)
Napa Corrections Dept.	205	187	(18)	-8.8%	0.5%	3.46%	(130)
Alameda Sheriff's Dept.	4,234	4,216	(18)	-0.4%	0.5%	3.94%	(148)
Santa Clara Probation Dept.	290	264	(26)	-9.0%	0.7%	4.64%	(174)
Kings Sheriff's Dept.	337	311	(26)	-7.7%	0.7%	5.33%	(200)
Contra Costa Sheriff's Dept.	1,546	1,520	(26)	-1.7%	0.7%	6.02%	(226)
Ventura County Work Force Dept.	173	144	(29)	-16.8%	0.8%	6.79%	(255)
Sutter Sheriff's Dept.	243	214	(29)	-11.9%	0.8%	7.57%	(284)
Del Norte Sheriff's Dept.	117	87	(30)	-25.6%	0.8%	8.37%	(314)
San Luis Obispo Sheriff's Dept.	408	373	(35)	-8.6%	0.9%	9.30%	(349)
El Dorado Sheriff's Dept.	324	289	(35)	-10.8%	0.9%	10.23%	(384)
Yuba County Sheriff's Dept.	333	293	(40)	-12.0%	1.1%	11.30%	(424)
Mendocino Sheriff's Dept.	248	200	(48)	-19.4%	1.3%	12.58%	(472)
Santa Barbara Sheriff's Dept.	998	944	(54)	-5.4%	1.4%	14.02%	(526)
San Bernardino Sheriff's Dept.	4,887	4,833	(54)	-1.1%	1.4%	15.45%	(580)
Imperial Sheriff's Dept.	617	561	(56)	-9.1%	1.5%	16.95%	(636)
Monterey Sheriff's Dept.	1,045	987	(58)	-5.6%	1.5%	18.49%	(694)
Santa Cruz Sheriff's Dept.	656	594	(62)	-9.5%	1.7%	20.14%	(756)
San Diego Probation Dept.	346	281	(65)	-18.8%	1.7%	21.88%	(821)
Madera Corrections Dept.	299	234	(65)	-21.7%	1.7%	23.61%	(886)
Stanislaus Sheriff's Dept.	1,099	1,021	(78)	-7.1%	2.1%	25.69%	(964)
Placer Sheriff's Dept.	460	377	(83)	-18.0%	2.2%	27.90%	(1,047)
Solano Sheriff's Dept.	870	780	(90)	-10.3%	2.4%	30.30%	(1,137)
Tulare Sheriff's Dept.	1,277	1,144	(133)	-10.4%	3.5%	33.84%	(1,270)
Riverside Sheriff's Dept.	2,805	2,634	(171)	-6.1%	4.6%	38.40%	(1,441)
Orange Sheriff's Dept.	5,226	5,017	(209)	-4.0%	5.6%	43.96%	(1,650)
Santa Clara Dept. of Correction	4,690	4,411	(279)	-5.9%	7.4%	51.40%	(1,929)
Sacramento Sheriff's Dept.	3,576	3,245	(331)	-9.3%	8.8%	60.22%	(2,260)
San Diego Sheriff's Dept.	5,480	5,029	(451)	-8.2%	12.0%	72.24%	(2,711)
Los Angeles Sheriff's Dept.	21,463	20,421	(1,042)	-4.9%	27.8%	100.00%	(3,753)

Note: Totals subject to slight variations due to rounding

Total increase 699

Total decrease (3,753)



**Interpretation of Table:  
JAIL POPULATIONS: 1st Quarter '98 versus 1st Quarter '99**

This table:

- summarizes the ADP results for the 63 jurisdictions in California reporting data from Type II, III, and IV jails;
- summarizes jurisdiction ADP results for the most recent quarter (Column B);
- compares jurisdiction ADP for the most recent quarter with the same quarter last year (Column A);
- ranks the jurisdictions in terms of gains or losses in ADP from high to low (Column C);
- lists the percentage growth or decline in ADP for each jurisdiction (Column D); lists the percentage of the overall State increase or decrease in ADP that is represented by each jurisdiction (Column E);
- lists, by jurisdiction, the cumulative percentage increase and decrease in the State ADP starting with the jurisdiction with the highest percentage of the increase and proceeding to the jurisdiction with the highest percentage of the decrease (Column F);
- lists, by jurisdiction, the cumulative total increase and decrease in the State ADP starting with the jurisdiction with the highest increase and proceeding to the jurisdiction with the biggest decrease (Column G); and
- lists the jurisdictions that experienced decreases in their ADP as shaded.

Some important conclusions from this table are:

1. The two numbers at the bottom indicate the "total increase" in ADP (in this case 699) and "total decrease" in ADP (-3,753). In other words, the jurisdictions experiencing increases had a total increase of 699 ADP; and the jurisdictions experiencing decreases had a total decrease of -3,753 ADP. Subtracting 699 from -3,753 produces the overall decrease of -3,054 between the first quarter of 1998 and the first quarter of 1999.
2. The San Francisco ADP increase of 196 is 10.5% of the total increase of 699. Eighteen jurisdictions had increases (down to Siskiyou Sheriff's Department). When you get to Siskiyou Sheriff's Department, you have accounted for 100% of the increases (100% of the cumulative total of 699).
3. Jurisdictions that experienced a decrease in ADP are listed from smallest decrease to largest decrease (Tuolumne Sheriff's Department to Los Angeles Sheriff's Department). When you get to the bottom of the table, you have accounted for 100% of the total decreases of -3,753 inmates.
4. The cumulative percentage of ADP increase for the top five jurisdictions (San Francisco Sheriff's Department to San Joaquin Sheriff's Department) is 74.25%. In other words, five jurisdictions accounted for about 74% of the ADP increase.