

JUVENILE DETENTION PROFILE SURVEY



**FOURTH QUARTER
2009**

Corrections Standards Authority
Facilities Standards and Operations Division
600 Bercut Drive
Sacramento CA 95811
(916) 445-5073
www.csa.ca.gov

JUVENILE DETENTION PROFILE SURVEY

EXPLANATION OF RESULTS

The following link titles contain the Juvenile Detention Profile Survey results for the Fourth Quarter of Calendar Year 2009. **Capacity, Population and ADP Breakout** contains totals for major categories such as Highest One-Day Population, Average Daily Population (ADP), gender, and the age range of detained minors. **Breakout of Juveniles in Detention** contains information regarding counties' ADP and Rated Capacity (RC) breakouts and **Summary of Survey Results** contains information about a wide range of juvenile detention facility issues including crowding, mental health needs, average length of stay, and number of bookings.

Juvenile Hall Data – Part 1 & 2, and Camp Data contains trend information compiled from 2004 through the fourth quarter of 2009. The trend data is separated into Juvenile Hall related data and Camp related data.

Please keep the following in mind when reviewing this information:

- For Overall Capacity, Crowding (highest one-day population-the count of minors in detention on the day of each county's highest population) and ADP (the average daily detention population for the reporting period), we have complete data from all jurisdictions in the state that operate juvenile detention facilities.
- Each jurisdiction provides us with the average population, computed across all the days in the month, for each of the three months in the quarter. The weighted average across the three months is then computed for each jurisdiction (with the monthly averages weighted by the number of days in the month). The jurisdictions ADPs are then combined to produce the state's total ADP.
- For some variables (other than ADP), we did not receive complete data from all jurisdictions. In such instances, we used statistical procedures to estimate the statewide total.
- Felony/misdemeanor, gender counts, and age-range breakouts are based upon a one-day snapshot (on the 15th day of the final month of the quarter). These values are used to determine the percentage of the population in each felony/misdemeanor, gender, and age category. The percentages are then applied to the Total ADP to project the expected ADP in each of the felony/misdemeanor, gender, and age-range categories.
- ***Please note:*** Each quarter, every county with juvenile detention facilities submits their data to the CSA. While we make every effort to review data for accuracy, including contacting individual counties for clarification, CSA cannot be responsible for data reporting errors made at the county level.

**California Corrections Standards Authority
 Juvenile Detention Profile Survey - 4th Quarter, 2009
 Overall Capacity, Population and ADP**

Overall Capacity and Population							
	JUVENILE HALL		CAMPS		OTHER	TOTAL	
ADP	5,916.3		3,647.3		2,710.3	12,273.9	
Percent of Total	48.2%		29.7%		22.1%	100.0%	
RC *	8,328.0		5,325.2			13,653.2	
High One Day	6,615.0		3,782.0			10,397.0	

Gender by Detention Type								
	JUVENILE HALL		CAMPS		OTHER		TOTAL	
GENDER	ADP	%	ADP	%	ADP	%	ADP	%
Male	5,104.1	86.3%	3,288.0	90.1%	2,248.2	83.0%	10,640.3	86.7%
Female	812.2	13.7%	359.3	9.9%	462.1	17.0%	1,633.6	13.3%
TOTAL	5,916.3	100.0%	3,647.3	100.0%	2,710.3	100.0%	12,273.9	100.0%

Disposition by Gender for Juvenile Halls							
	MALE		FEMALE		TOTAL		
DISPOSITION	Number	%	Number	%	Number	%	
Pre-Disposition	2,815.8	55.2%	487.4	60.0%	3,303.2	55.8%	
Post-Disposition	2,288.3	44.8%	324.8	40.0%	2,613.1	44.2%	
TOTAL	5,104.1	100.0%	812.2	100.0%	5,916.3	100.0%	

Disposition by Gender for Other Detention							
	MALE		FEMALE		TOTAL		
DISPOSITION	Number	%	Number	%	Number	%	
Pre-Disposition	855.3	38.0%	195.4	42.3%	1,050.8	38.8%	
Post-Disposition	1,392.8	62.0%	266.7	57.7%	1,659.5	61.2%	
TOTAL	2,248.2	100.0%	462.1	100.0%	2,710.3	100.0%	

Age Range by Type of Detention (One-Day Snapshot)							
	JUVENILE HALL		CAMPS		TOTAL		
AGE RANGES	Number	%	Number	%	Number	%	
Under 12	5.0	0.1%	0.0	0.0%	5.0	0.1%	
12 to 14	715.0	12.1%	209.0	5.8%	924.0	9.7%	
15 to 17	4,679.0	79.4%	2,774.0	76.7%	7,453.0	78.4%	
18 _Over	494.0	8.4%	635.0	17.6%	1,129.0	11.9%	
TOTAL	5,893.0	100.0%	3,618.0	100.0%	9,511.0	100.0%	

* RC is Rated Capacity which is the number of beds that comply with standards set forth in Title 24, California Code of Regulations.

**County Breakout Report - 4th Quarter, 2009
Facilities and Alternative Detention**

	County	Rated Capacity	Facilities Detention	Other Detention	ADP	Percent of Total	Cumulative Percent
1	Los Angeles	4,144	2,906.3	710.96	3,617.3	29.47%	29.47%
2	San Diego	1,105	809.0	287.24	1,096.2	8.93%	38.40%
3	Orange	797	617.4	88.32	705.8	5.75%	44.15%
4	Sacramento	386	331.5	279.04	610.5	4.97%	49.13%
5	Santa Clara	550	394.5	193.00	587.5	4.79%	53.91%
6	Alameda	463	276.0	221.12	497.1	4.05%	57.96%
7	Contra Costa	290	264.0	130.75	394.7	3.22%	61.18%
8	Riverside	584	372.2	22.33	394.6	3.21%	64.39%
9	Kern	473	361.4	23.17	384.6	3.13%	67.53%
10	Fresno	450	382.0	0.00	382.0	3.11%	70.64%
11	San Bernardino	620	377.8	0.00	377.8	3.08%	73.72%
12	San Mateo	274	205.6	120.95	326.6	2.66%	76.38%
13	Ventura	280	179.3	63.11	242.4	1.97%	78.35%
14	Tulare	345	156.4	79.68	236.1	1.92%	80.28%
15	Stanislaus	158	149.7	76.61	226.3	1.84%	82.12%
16	San Francisco	234	103.6	122.26	225.9	1.84%	83.96%
17	Santa Barbara	272	188.9	0.00	188.9	1.54%	85.50%
18	Monterey	193	154.3	23.02	177.3	1.44%	86.95%
19	Merced	120	101.3	68.87	170.2	1.39%	88.33%
20	San Joaquin	224	168.0	0.00	168.0	1.37%	89.70%
21	Sonoma	148	108.1	40.44	148.5	1.21%	90.91%
22	Solano	148	110.1	29.36	139.5	1.14%	92.05%
23	Yolo	90	76.1	13.86	90.0	0.73%	92.78%
24	El Dorado	80	62.0	9.71	71.7	0.58%	93.37%
25	Kings	95	70.6	0.00	70.6	0.58%	93.94%
26	Madera	119	57.0	9.10	66.1	0.54%	94.48%
27	San Luis Obispo	45	42.0	13.39	55.4	0.45%	94.93%
28	Placer	55	36.9	16.97	53.9	0.44%	95.37%
29	Humboldt	44	39.7	11.85	51.6	0.42%	95.79%
30	Butte	60	44.6	6.33	51.0	0.42%	96.20%
31	Colusa	60	48.3	0.00	48.3	0.39%	96.60%
32	Yuba	120	47.3	0.00	47.3	0.39%	96.98%
33	Shasta	56	31.7	13.66	45.3	0.37%	97.35%
34	Napa	50	41.9	0.00	41.9	0.34%	97.69%
35	Santa Cruz	42	20.7	13.90	34.6	0.28%	97.98%
36	Del Norte	62	30.6	0.00	30.6	0.25%	98.23%
37	Marin	40	19.0	7.33	26.3	0.21%	98.44%
38	Mendocino	43	25.1	0.00	25.1	0.20%	98.64%
39	Imperial	72	24.5	0.00	24.5	0.20%	98.84%
40	Tehama	40	21.7	0.00	21.7	0.18%	99.02%
41	San Benito	20	18.3	2.00	20.3	0.17%	99.19%
42	Lake	40	18.0	0.67	18.7	0.15%	99.34%
43	Nevada	30	18.0	0.00	18.0	0.15%	99.48%
44	Siskiyou	20	9.0	7.00	16.0	0.13%	99.62%
45	Glenn	22	15.6	0.00	15.6	0.13%	99.74%
46	Inyo	14	10.0	0.00	10.0	0.08%	99.82%
47	Lassen	40	8.7	1.00	9.7	0.08%	99.90%
48	Trinity	28	8.3	0.00	8.3	0.07%	99.97%
49	Tuolumne	0	0.0	3.01	3.0	0.02%	100.00%
50	Mariposa	4	0.3	0.00	0.3	0.00%	100.00%
51	Amador	0	0.0	0.29	0.3	0.00%	100.00%
52	Mono	4	0.0	0.00	0.0	0.00%	100.00%
53	Sierra	0	0.0	0.00	0.0	0.00%	100.00%
		13,653	9,563.6	2,710.3	12,273.9	100.00%	

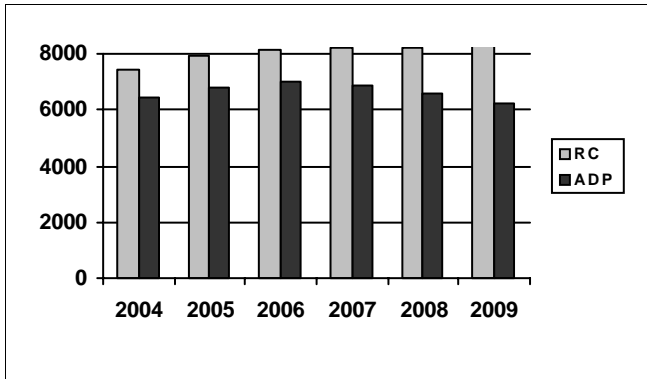
*ADP on County Breakout Report may not equal ADP on other Summary Reports due to rounding

Juvenile Detention Profile Survey

4th Quarter Report 2009	Rated Capacity	One Day Snapshot				Average Daily Population				
		Misdemeanor		Felony		Pre-Disposition		Post-Disposition		Total ADP
		Male	Female	Male	Female	Male	Female	Male	Female	
Juvenile Halls	8,328.0	11.6%	3.0%	29.5%	3.4%	2,815.8	487.4	2,288.3	324.8	5,916.3
Camps / Ranches	5,325.2	6.1%	1.3%	21.5%	1.9%			3,288.0	359.3	3,647.3
Other Juveniles in the System		Male	Female	Male	Female	Male	Female	Male	Female	Total ADP
Juveniles on home supervision with electronic monitoring		6.1%	1.5%	5.2%	1.0%	583.6	129.9	838.7	165.0	1,717.1
Juveniles on home supervision without electronic monitoring		1.6%	0.5%	2.8%	0.6%	247.8	59.9	273.5	64.1	645.3
Juveniles alternative confinement programs		0.7%	0.2%	1.5%	0.2%	24.0	5.7	280.7	37.6	347.9
Grand Totals		26.2%	6.4%	60.4%	7.0%	3,671.2	682.8	6,969.2	950.8	12,273.9
Mental Health Snapshot										
Number of open mental health cases this day									4,486.8	
Number of juveniles receiving psychotropic medication									1,595.4	
Crowding										
Average daily population of juveniles in other jurisdictions DUE TO LACK OF SPACE									23.7	
Number of juveniles released early DUE TO LACK OF SPACE									70.3	
Average number of days that one or more facilities in a county exceeded the Rated Capacity									11.2	
Average Bookings Per Month										
Number of Juvenile Hall bookings/admissions									8,614.4	
Number of bookings for weapon-related offenses									617.8	
Number of 601 bookings									29.4	
Number of 777 bookings									1,414.7	
Number of direct file {WIC 602(b) and 707(d)} bookings									63.1	
Final Month of the Quarter (One-Day Snapshot)										
Detained for 707b Offense									1,053.7	
Awaiting placement									600.7	
Awaiting transport to a camp									187.4	
Awaiting transfer to Youth Authority									65.3	
Court commitments to juvenile hall (Ricardo M)									966.4	
Found unfit per 707.01 WIC									53.5	
Direct files to Adult Court-602(b) and 707(d) WIC									386.3	
Hospitalized outside detention facility for MEDICAL CARE									17.0	
Hospitalized outside detention facility for MENTAL HEALTH CARE									21.0	
Believed to be criminal illegal aliens									117.9	
Average Length of Stay										
Juvenile Hall (all releases)									39.5	
Juvenile Hall to Camps									60.1	
Juvenile Hall to other out-of-home placements (i.e. group homes or foster homes)									70.4	
Juvenile Hall who were found unfit (per juvenile court)									554.9	
Juvenile Hall who were direct filings to adult court									395.2	
Camps (all releases)									109.0	
Cumulative Total for the Quarter										
Detention Behavior						Juvenile Halls		Camps / Ranches		Other Detention
Assaults by juveniles on staff						89.5		9.0		0.0
Escapes						14.2		89.0		0.0
Suicide Attempts						56.8		0.0		0.0
Suicides						0.0		0.0		0.0

Fourth Quarter Report, 2009 - Juvenile Hall Data

Rated Capacity RC and ADP for Juvenile Halls

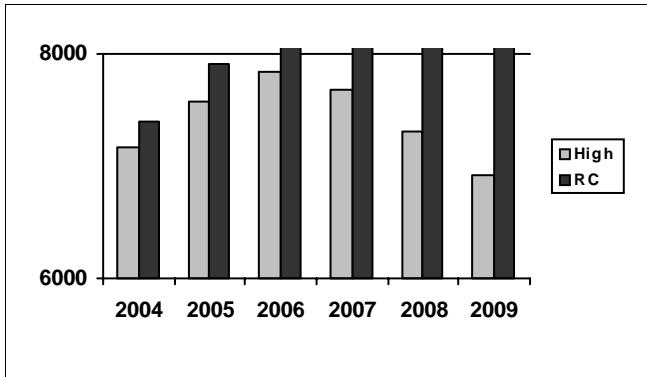


For the first time in several years, the ADP in juvenile halls has fallen below 6,000. The 4th Quarter ADP decreased 2% from the previous quarter, and has decreased nearly 10% from the same quarter in 2008.

Summary of Juvenile Hall ADP				
2004	2005	2006	2007	2008
6,460	6,818	7,017	6,858	6,614

2009 Summary of Juvenile Hall ADP				
Q1	Q2	Q3	Q4	Average
6,384	6,435	6,059	5,916	6,197

Juvenile Hall Highest One-Day Population and RC

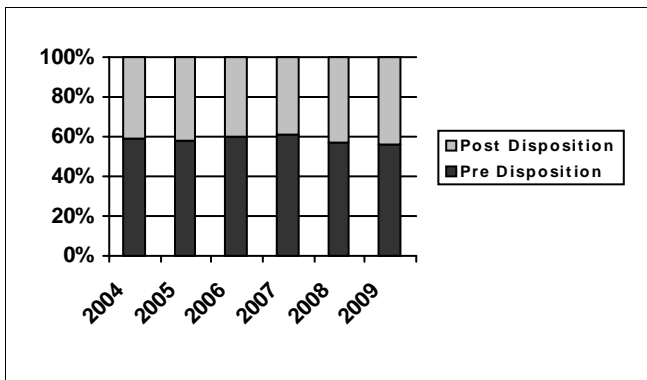


The high one day population in juvenile halls continued its decline into the 4th Quarter 2009. This quarter's high one day decreased nearly 4% from the previous quarter and over 8% from the same quarter in 2008.

Summary of Juvenile Hall Highest One Day				
2004	2005	2006	2007	2008
7,166	7,575	7,837	7,686	7,317

2009 Summary of Highest One-Day Population				
Q1	Q2	Q3	Q4	Average
7,091	7,093	6,863	6,615	6,914

Pre-Disposition in Juvenile Halls



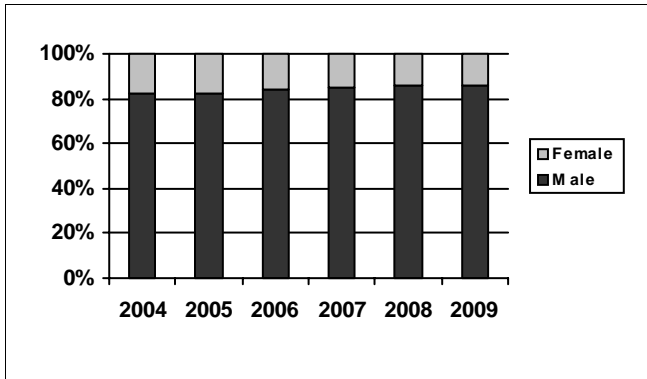
At 56%, the percentage of pre-disposition youth in juvenile halls remains constant.

Summary of Pre-Disposition in Juvenile Halls				
2004	2005	2006	2007	2008
59%	58%	60%	61%	57%

2009 Summary of Pre-Disposition Juvenile Halls				
Q1	Q2	Q3	Q4	Average
56%	56%	55%	56%	56%

Fourth Quarter Report, 2009 - Juvenile Hall Data

Gender Distribution in Juvenile Halls



The distribution of gender has not wavered during 2009.

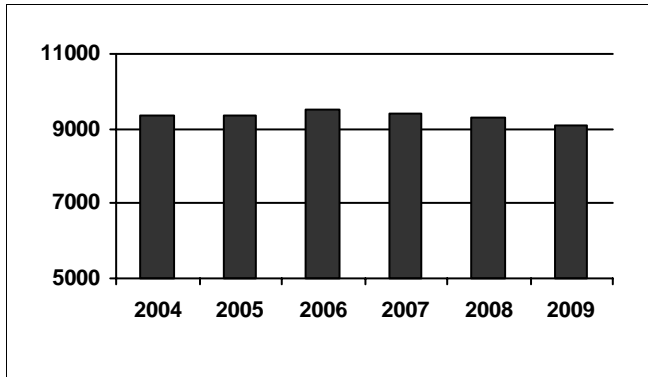
Summary of Males in Juvenile Halls

2004	2005	2006	2007	2008
82%	82%	84%	85%	86%

2009 Summary of Males in Juvenile Hall

Q1	Q2	Q3	Q4	Average
85%	86%	86%	86%	86%

Average Number of Juveniles Booked per Month



The average number of juveniles booked at juvenile halls decreased less than 3% from the previous quarter. Similar to ADP and high one day populations, this number has continued to decrease over the years. The 4th Quarter number is 2% less than the similar quarter in 2008.

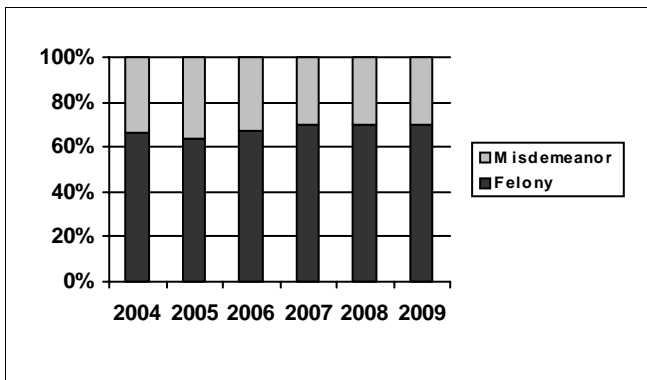
Summary of Juveniles Booked per Month

2004	2005	2006	2007	2008
9,337	9,353	9,539	9,422	9,325

2009 Summary of Monthly Bookings

Q1	Q2	Q3	Q4	Average
9,123	9,655	8,867	8,614	9,063

Distribution of Charge in Juvenile Halls



The percentage of felony charges in juvenile halls decreased again to 69% in the 4th Quarter. Although the average for the year was identical to previous years, each quarter in 2009 showed variance.

Summary of Felony Charges in Juvenile Halls

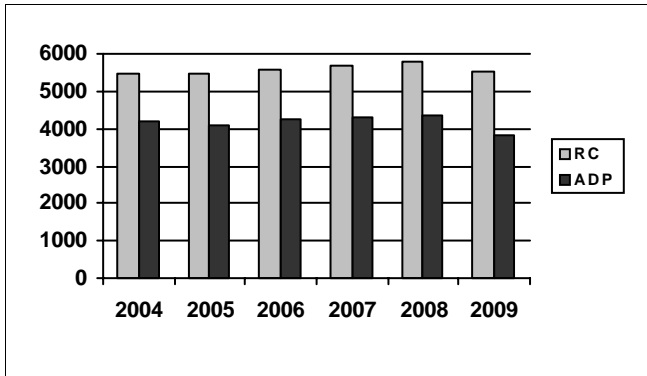
2004	2005	2006	2007	2008
66%	64%	67%	70%	70%

2009 Summary of Felony Charge Juvenile Hall

Q1	Q2	Q3	Q4	Average
70%	69%	71%	69%	70%

Fourth Quarter Report, 2009 - Camp Data

RC and ADP for Camps



Camp ADP continued to decline throughout 2009, to 3,647 in the 4th Quarter. This represents a 2.5% decrease from the previous quarter and a 14% decrease from the same quarter in 2008. The average Camp ADP for 2009 is 11% less than the average in 2008. Camp RC decreased over 8% in the previous year. Although both RC & ADP are decreasing, the RC is not declining at the same rate as ADP.

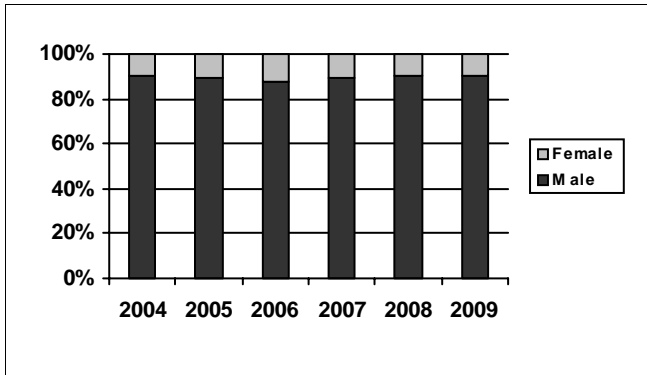
Summary of Camp ADP

2004	2005	2006	2007	2008
4,182	4,097	4,252	4,278	4,338

2009 Summary of Camp ADP

Q1	Q2	Q3	Q4	Average
4,026	3,956	3,740	3,647	3,841

Gender Distribution in Camps



The percentage of males remained consistent throughout 2009.

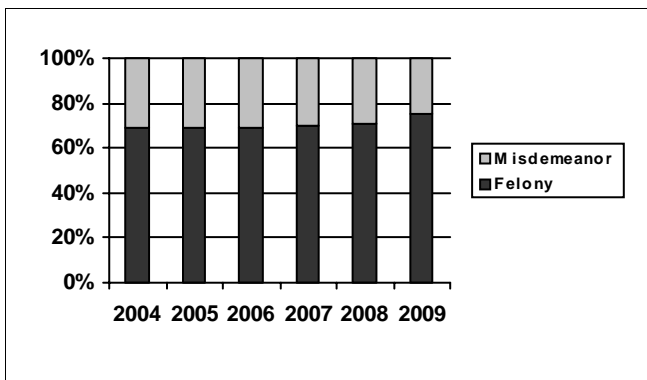
Summary of Males in Camps

2004	2005	2006	2007	2008
90%	89%	88%	89%	90%

2009 Summary of Males in Camps

Q1	Q2	Q3	Q4	Average
91%	90%	90%	90%	90%

Distribution of Charge in Camps



2009 showed an increase in the percentage of felony charges in camps; the average for 2009 was 75%, where in 2008 it was 71%. This percentage of felonies increased while ADP was decreasing.

Summary of Felonies in Camps

2004	2005	2006	2007	2008
69%	69%	69%	70%	71%

2009 Summary of Felonies in Camps

Q1	Q2	Q3	Q4	Average
72%	75%	75%	76%	75%

Instructions for Interpreting the Survey Report

Capacity, Population and ADP Breakout is designed to present the Juvenile Detention Profile Survey results for the major reporting categories.

- **Capacity:** this category presents the Rated Capacity (RC) in terms of the number of beds in juvenile halls and camps/ranches that meet the Corrections Standards Authority (CSA) standards.
- **High One-Day:** each jurisdiction reports for each month in the quarter, the juvenile hall and camp/ranch populations that, together, constituted the highest one-day count of the month.
- **Other:** this category refers to the sum of all juveniles who are receiving custody credit while on home supervision with or without electronic monitoring, or in alternative confinement programs.

Breakout of Juveniles in Detention is designed to present County-specific counts.

- **County-specific counts:** this page identifies the ADP for each county and the percent that county contributes to the total state juvenile detention population. The counties are ranked in descending order based on their percentage of the overall juvenile detention population in the state.

Summary of Survey Results is designed to present all the remaining Juvenile Detention Profile Survey results not already listed.

- **One-Day Snapshot:** the percentages in this section are percentages of the total ADP for juvenile halls, camps/ranches, and other juveniles in the system.
- **Average number of days that one or more facilities in a county exceeded the Rated Capacity:** this value is the result of taking all of the counties “number of days of crowding” and averaging the figures submitted by all the jurisdictions. If a jurisdiction had no crowding days, that jurisdiction was not included in the computation. In other words, the value presented indicates the typical number of crowding days per month experienced by jurisdictions that have had one or more days of crowding in the Fourth Quarter of Calendar Year 2009.
- **Average Length of Stay:** these numbers are averages for all juveniles in each category: 1) “juvenile hall (all releases)” is computed by first taking the mean length of stay for all juveniles released from juvenile halls in a jurisdiction. Next, all the jurisdictions’ means are averaged to produce a statewide figure; 2) “juvenile hall to camps/ranches” is computed in the same fashion, but includes only those juveniles released from juvenile hall and placed in a camp or ranch; 3) “juvenile hall to other out-of-home placements” presents the average length of stay for that subset of juveniles.