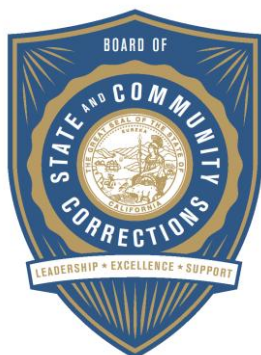


JUVENILE DETENTION PROFILE SURVEY

.....
Third Quarter Calendar Year 2012
Survey Results



BOARD OF STATE AND COMMUNITY CORRECTIONS

FACILITIES STANDARDS AND OPERATIONS DIVISION
600 Bercut Drive, Sacramento, CA 95811
916.445.5073 **PHONE**
916.327.3317 **FAX**
bscc.ca.gov

Leadership



Excellence



Support

EXPLANATION OF RESULTS

The following pages contain the Juvenile Detention Profile Survey results for the Third Quarter of Calendar Year 2012. Page 3 contains totals for major categories such as Highest One-Day Population, Average Daily Population (ADP), gender, and the age range of detained minors. Page 4 contains information regarding counties' ADP and Rated Capacity (RC) breakouts and Page 5 contains information about a wide range of juvenile detention facility issues including crowding, mental health needs, average length of stay, and number of bookings.

Pages 6, 7, and 8 contain trend information compiled from calendar year 2007 through calendar year 2011. The trend data is separated into Juvenile Hall related data and Camp related data.

Please keep the following in mind when reviewing this information:

- For Overall Capacity, Crowding (highest one-day population – the count of minors in detention on the day of each county's highest population) and ADP (the average daily detention population for the reporting period), we have complete data from all jurisdictions in the state that operate juvenile detention facilities.
- Each jurisdiction provides us with the average population, computed across all the days in the month, for each of the three months in the quarter. The weighted average across the three months is then computed for each jurisdiction (with the monthly averages weighted by the number of days in the month). The jurisdictions ADPs are then combined to produce the state's total ADP.
- For some variables (other than ADP), we did not receive complete data from all jurisdictions. In such instances, we used statistical procedures to estimate the statewide total.
- Felony/misdemeanor, gender counts, and age-range breakouts are based upon a one-day snapshot (on the 15th day of the final month of the quarter). These values are used to determine the percentage of the population in each felony/misdemeanor, gender, and age category. The percentages are then applied to the Total ADP to project the expected ADP in each of the felony/misdemeanor, gender, and age-range categories.
- In addition to the population breakdowns for juvenile halls and camps, the report contains like information for youth who were part of non-facility based, alternative to detention programs. Youth in that category are listed under "Other Detention." Other detention includes home supervision with and without electronic monitoring, day reporting centers, work programs and other alternatives to detention **for which youth are credited with custody time.**
- **Please note:**
 - In early 2011, eight regional trainings were held for county reporters and contributors to the JDPS. When interpreting the JDPS results from the 2nd quarter of 2011 forward, please consider that the clarification of variable definitions and calculations which occurred at those trainings may explain some unanticipated differences when compared to prior quarters.
 - Each quarter, every county with juvenile detention facilities submits their data to the Board of State and Community Corrections. While we make every effort to review data for accuracy, including contacting individual counties for clarification, the BSCC cannot be responsible for data reporting errors made at the county level.

Board of State and Community Corrections
Juvenile Detention Profile Survey - 3rd Quarter, 2012
Overall Capacity, Population and ADP

| Overall Capacity and Population | | | | | | | | |
|--|----------------|---------------|----------------|---------------|----------------|---------------|----------------|---------------|
| | JUVENILE HALL | | CAMPS | | OTHER | | TOTAL | |
| ADP | 4,430.1 | | 2,794.6 | | 1,237.2 | | 8,461.9 | |
| Percent of Total | 52.4% | | 33.0% | | 14.6% | | 100.0% | |
| RC * | 8,199.0 | | 4,947.0 | | | | 13,146.0 | |
| High One Day | 5,018.0 | | 2,970.0 | | | | 7,988.0 | |
| Gender by Detention Type | | | | | | | | |
| | JUVENILE HALL | | CAMPS | | OTHER | | TOTAL | |
| GENDER | ADP | % | ADP | % | ADP | % | ADP | % |
| Male | 3,786.3 | 85.5% | 2,504.9 | 89.6% | 1,030.2 | 83.3% | 7,321.4 | 86.5% |
| Female | 643.8 | 14.5% | 289.7 | 10.4% | 207.0 | 16.7% | 1,140.5 | 13.5% |
| TOTAL | 4,430.1 | 100.0% | 2,794.6 | 100.0% | 1,237.2 | 100.0% | 8,461.9 | 100.0% |
| Disposition by Gender for Juvenile Halls | | | | | | | | |
| | MALE | | FEMALE | | TOTAL | | | |
| DISPOSITION | Number | % | Number | % | Number | % | | |
| Pre-Disposition | 1,951.6 | 51.5% | 349.0 | 54.2% | 2,300.6 | 51.9% | | |
| Post-Disposition | 1,834.7 | 48.5% | 294.8 | 45.8% | 2,129.5 | 48.1% | | |
| TOTAL | 3,786.3 | 100.0% | 643.8 | 100.0% | 4,430.1 | 100.0% | | |
| Disposition by Gender for Other Detention | | | | | | | | |
| | MALE | | FEMALE | | TOTAL | | | |
| DISPOSITION | Number | % | Number | % | Number | % | | |
| Pre-Disposition | 341.1 | 33.1% | 69.2 | 33.4% | 410.3 | 33.2% | | |
| Post-Disposition | 689.1 | 66.9% | 137.8 | 66.6% | 826.8 | 66.8% | | |
| TOTAL | 1,030.2 | 100.0% | 207.0 | 100.0% | 1,237.2 | 100.0% | | |
| Age Range by Type of Detention (One-Day Snapshot) | | | | | | | | |
| | JUVENILE HALL | | CAMPS | | TOTAL | | | |
| AGE RANGES | Number | % | Number | % | Number | % | | |
| Under 12 | 5.0 | 0.1% | 0.0 | 0.0% | 5.0 | 0.1% | | |
| 12 to 14 | 507.0 | 11.4% | 143.0 | 5.0% | 650.0 | 8.9% | | |
| 15 to 17 | 3,477.0 | 78.4% | 2,133.0 | 74.2% | 5,610.0 | 76.7% | | |
| 18 Over | 448.0 | 10.1% | 597.0 | 20.8% | 1,045.0 | 14.3% | | |
| TOTAL | 4,437.0 | 100.0% | 2,873.0 | 100.0% | 7,310.0 | 100.0% | | |

* RC is Rated Capacity which is the number of beds that comply with standards set forth in Title 24, California Code of Regulations.

**County Breakout Report - 3rd Quarter, 2012
Facilities and Alternative Detention**

| | County | Rated Capacity | Facilities Detention | Other Detention | ADP | Percent of Total | Cumulative Percent |
|----|-----------------|-----------------------|-----------------------------|------------------------|----------------|-------------------------|---------------------------|
| 1 | Los Angeles | 3,573 | 2,030.3 | 87.74 | 2,118.0 | 25.03% | 25.03% |
| 2 | San Diego | 1,105 | 712.8 | 193.64 | 906.5 | 10.71% | 35.74% |
| 3 | Orange | 743 | 484.2 | 70.58 | 554.8 | 6.56% | 42.30% |
| 4 | Fresno | 450 | 303.0 | 119.42 | 422.4 | 4.99% | 47.29% |
| 5 | Kern | 475 | 359.6 | 3.51 | 363.1 | 4.29% | 51.58% |
| 6 | Santa Clara | 538 | 210.2 | 147.40 | 357.6 | 4.23% | 55.81% |
| 7 | Sacramento | 444 | 179.5 | 140.26 | 319.7 | 3.78% | 59.59% |
| 8 | Riverside | 582 | 262.8 | 46.61 | 309.4 | 3.66% | 63.24% |
| 9 | San Bernardino | 450 | 305.4 | 0.00 | 305.4 | 3.61% | 66.85% |
| 10 | Alameda | 463 | 251.2 | 45.51 | 296.7 | 3.51% | 70.36% |
| 11 | Contra Costa | 390 | 223.1 | 0.00 | 223.1 | 2.64% | 73.00% |
| 12 | San Mateo | 245 | 138.1 | 83.74 | 221.8 | 2.62% | 75.62% |
| 13 | Tulare | 330 | 146.7 | 60.71 | 207.4 | 2.45% | 78.07% |
| 14 | Monterey | 190 | 112.4 | 56.24 | 168.6 | 1.99% | 80.06% |
| 15 | Santa Barbara | 272 | 160.0 | 0.00 | 160.0 | 1.89% | 81.95% |
| 16 | Sonoma | 188 | 117.5 | 38.74 | 156.2 | 1.85% | 83.80% |
| 17 | Stanislaus | 158 | 116.7 | 21.96 | 138.7 | 1.64% | 85.44% |
| 18 | San Joaquin | 224 | 136.3 | 0.00 | 136.3 | 1.61% | 87.05% |
| 19 | Merced | 120 | 78.1 | 35.08 | 113.1 | 1.34% | 88.38% |
| 20 | Ventura | 385 | 107.0 | 0.00 | 107.0 | 1.26% | 89.65% |
| 21 | San Francisco | 234 | 96.7 | 0.00 | 96.7 | 1.14% | 90.79% |
| 22 | Solano | 148 | 85.1 | 9.27 | 94.4 | 1.12% | 91.91% |
| 23 | Kings | 205 | 69.1 | 0.00 | 69.1 | 0.82% | 92.72% |
| 24 | Madera | 70 | 50.6 | 12.63 | 63.2 | 0.75% | 93.47% |
| 25 | Yuba | 120 | 48.1 | 0.00 | 48.1 | 0.57% | 94.04% |
| 26 | Shasta | 56 | 30.0 | 18.01 | 48.0 | 0.57% | 94.60% |
| 27 | Butte | 60 | 39.3 | 3.01 | 42.3 | 0.50% | 95.10% |
| 28 | El Dorado | 80 | 29.3 | 8.63 | 38.0 | 0.45% | 95.55% |
| 29 | Yolo | 90 | 28.1 | 9.78 | 37.9 | 0.45% | 96.00% |
| 30 | Del Norte | 62 | 33.1 | 0.00 | 33.1 | 0.39% | 96.39% |
| 31 | Humboldt | 44 | 30.4 | 2.63 | 33.0 | 0.39% | 96.78% |
| 32 | Lake | 30 | 18.0 | 9.37 | 27.4 | 0.32% | 97.11% |
| 33 | Napa | 50 | 26.0 | 0.00 | 26.0 | 0.31% | 97.41% |
| 34 | Placer | 58 | 25.7 | 0.00 | 25.7 | 0.30% | 97.72% |
| 35 | Santa Cruz | 42 | 22.2 | 0.00 | 22.2 | 0.26% | 97.98% |
| 36 | Mendocino | 43 | 20.9 | 0.00 | 20.9 | 0.25% | 98.23% |
| 37 | San Luis Obispo | 45 | 17.0 | 0.00 | 17.0 | 0.20% | 98.43% |
| 38 | Nevada | 60 | 13.0 | 3.02 | 16.0 | 0.19% | 98.62% |
| 39 | Siskiyou | 40 | 15.6 | 0.00 | 15.6 | 0.18% | 98.80% |
| 40 | Marin | 40 | 11.7 | 3.70 | 15.4 | 0.18% | 98.98% |
| 41 | Imperial | 72 | 15.1 | 0.00 | 15.1 | 0.18% | 99.16% |
| 42 | Tehama | 40 | 14.1 | 0.00 | 14.1 | 0.17% | 99.33% |
| 43 | San Benito | 20 | 13.3 | 0.66 | 14.0 | 0.17% | 99.49% |
| 44 | Glenn | 22 | 14.0 | 0.00 | 14.0 | 0.17% | 99.66% |
| 45 | Trinity | 28 | 11.4 | 0.00 | 11.4 | 0.13% | 99.79% |
| 46 | Lassen | 40 | 5.3 | 3.65 | 9.0 | 0.11% | 99.90% |
| 47 | Inyo | 14 | 6.7 | 0.00 | 6.7 | 0.08% | 99.98% |
| 48 | Tuolumne | 0 | 0.0 | 1.66 | 1.7 | 0.02% | 100.00% |
| 49 | Mariposa | 4 | 0.1 | 0.00 | 0.1 | 0.00% | 100.00% |
| 50 | Mono | 4 | 0.0 | 0.00 | 0.0 | 0.00% | 100.00% |
| 51 | Sierra | 0 | 0.0 | 0.00 | 0.0 | 0.00% | 100.00% |
| | | 13,146 | 7,224.8 | 1,237.2 | 8,461.9 | 100.00% | |

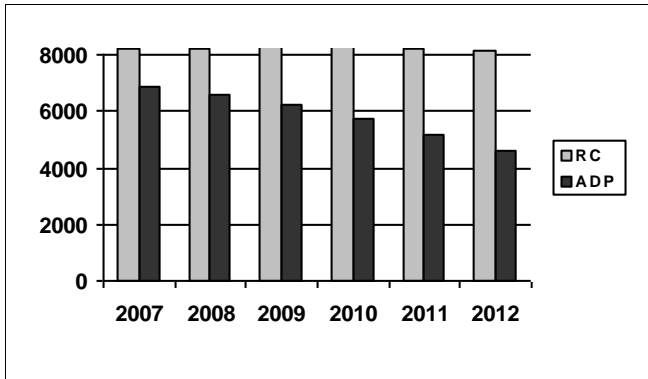
*ADP on County Breakout Report may not equal ADP on other Summary Reports due to rounding

Juvenile Detention Profile Survey

| 3rd Quarter Report 2012 | Juvenile Detention Profile Survey | | | | | | | | | |
|--|-----------------------------------|------------------|---------------|--------------|---------------|--------------------------|---------------|------------------------|---------------|------------------------|
| | Rated Capacity | One Day Snapshot | | | | Average Daily Population | | | | |
| | | Misdemeanor | | Felony | | Pre-Disposition | | Post-Disposition | | Total ADP |
| | Male | Female | Male | Female | Male | Female | Male | Female | | |
| Juvenile Halls | 8,199.0 | 14.1% | 4.2% | 31.2% | 3.7% | 1,951.6 | 349.0 | 1,834.7 | 294.8 | 4,430.1 |
| Camps / Ranches | 4,947.0 | 6.8% | 1.4% | 23.5% | 2.2% | | | 2,504.9 | 289.7 | 2,794.6 |
| Other Juveniles in the System | | Male | Female | Male | Female | Male | Female | Male | Female | Total ADP |
| Juveniles on home supervision with electronic monitoring | | 2.3% | 0.4% | 2.3% | 0.5% | 169.7 | 33.0 | 339.1 | 57.7 | 599.5 |
| Juveniles on home supervision without electronic monitoring | | 1.9% | 0.7% | 2.4% | 0.5% | 156.2 | 34.5 | 233.3 | 67.0 | 490.9 |
| Juveniles alternative confinement programs | | 0.4% | 0.1% | 1.2% | 0.1% | 15.3 | 1.7 | 116.7 | 13.2 | 146.8 |
| Grand Totals | | 25.5% | 6.9% | 60.6% | 7.0% | 2,292.7 | 418.2 | 5,028.7 | 722.3 | 8,461.9 |
| Mental Health Snapshot | | | | | | | | | | |
| Number of open mental health cases this day | | | | | | | | | 3,912.7 | |
| Number of juveniles receiving psychotropic medication | | | | | | | | | 1,439.2 | |
| Crowding | | | | | | | | | | |
| Average daily population of juveniles in other jurisdictions DUE TO LACK OF SPACE | | | | | | | | | 0.0 | |
| Number of juveniles released early DUE TO LACK OF SPACE | | | | | | | | | 0.0 | |
| Average number of days that one or more facilities in a county exceeded the Rated Capacity | | | | | | | | | 2.0 | |
| Average Bookings Per Month | | | | | | | | | | |
| Number of Juvenile Hall bookings/admissions | | | | | | | | | 5,290.8 | |
| Number of bookings for weapon-related offenses | | | | | | | | | 319.9 | |
| Number of 601 bookings | | | | | | | | | 13.4 | |
| Number of 777 bookings | | | | | | | | | 1,094.1 | |
| Number of direct file {WIC 602(b) and 707(d)} bookings | | | | | | | | | 48.3 | |
| Final Month of the Quarter (One-Day Snapshot) | | | | | | | | | | |
| Detained for 707b Offense | | | | | | | | | 886.5 | |
| Awaiting placement | | | | | | | | | 519.0 | |
| Awaiting transport to a camp | | | | | | | | | 232.9 | |
| Awaiting transfer to Youth Authority | | | | | | | | | 47.2 | |
| Court commitments to juvenile hall (Ricardo M) | | | | | | | | | 572.2 | |
| Found unfit per 707.01 WIC | | | | | | | | | 76.5 | |
| Direct files to Adult Court-602(b) and 707(d) WIC | | | | | | | | | 350.0 | |
| Hospitalized outside detention facility for MEDICAL CARE | | | | | | | | | 4.0 | |
| Hospitalized outside detention facility for MENTAL HEALTH CARE | | | | | | | | | 4.0 | |
| Believed to be criminal illegal aliens | | | | | | | | | 131.7 | |
| Average Length of Stay | | | | | | | | | | |
| Juvenile Hall (all releases) | | | | | | | | | 24.9 | |
| Juvenile Hall to Camps | | | | | | | | | 32.5 | |
| Juvenile Hall to other out-of-home placements (i.e. group homes or foster homes) | | | | | | | | | 41.3 | |
| Juvenile Hall who were found unfit (per juvenile court) | | | | | | | | | 377.9 | |
| Juvenile Hall who were direct filings to adult court | | | | | | | | | 289.3 | |
| Camps (all releases) | | | | | | | | | 123.4 | |
| Cumulative Total for the Quarter | | | | | | | | | | |
| Detention Behavior | | | | | | Juvenile Halls | | Camps / Ranches | | Other Detention |
| Assaults by juveniles on staff | | | | | | 37.0 | | 11.0 | | 0.0 |
| Escapes | | | | | | 4.0 | | 49.0 | | 15.2 |
| Suicide Attempts | | | | | | 26.0 | | 1.0 | | 0.0 |
| Suicides | | | | | | 0.0 | | 0.0 | | 0.0 |

Third Quarter Report, 2012 - Juvenile Hall Data

Rated Capacity RC and ADP for Juvenile Halls

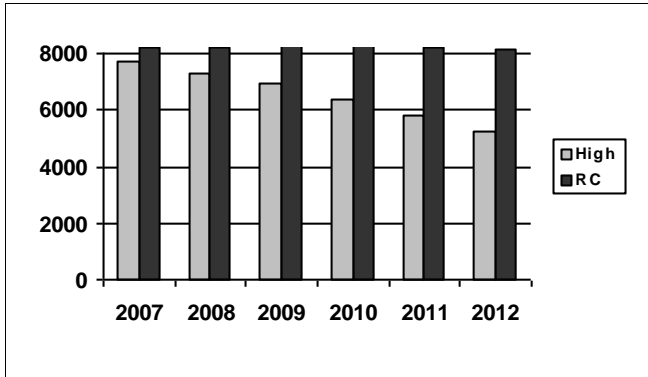


The 3rd quarter average daily population for juvenile halls was the lowest recorded since the JDPS data collection began in 1999.

| Summary of Juvenile Hall ADP | | | | |
|------------------------------|-------|-------|-------|-------|
| 2007 | 2008 | 2009 | 2010 | 2011 |
| 6,858 | 6,614 | 6,197 | 5,722 | 5,137 |

| 2012 Summary of Juvenile Hall ADP | | | | |
|-----------------------------------|-------|-------|--|---------|
| Q1 | Q2 | Q3 | | Average |
| 4,694 | 4,719 | 4,430 | | 4,614 |

Juvenile Hall Highest One-Day Population and RC

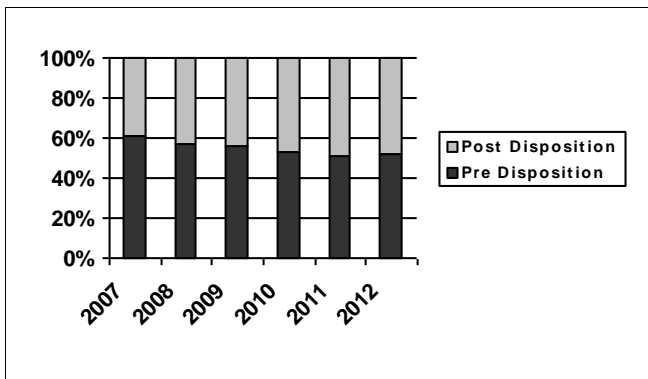


After a small increase in highest one day population, noted in the 2nd quarter, the high day population declined again.

| Summary of Juvenile Hall Highest One Day | | | | |
|--|-------|-------|-------|-------|
| 2007 | 2008 | 2009 | 2010 | 2011 |
| 7,686 | 7,317 | 6,915 | 6,387 | 5,795 |

| 2012 Summary of Highest One-Day Population | | | | |
|--|-------|-------|--|---------|
| Q1 | Q2 | Q3 | | Average |
| 5,338 | 5,362 | 5,018 | | 5,239 |

Pre-Disposition in Juvenile Halls



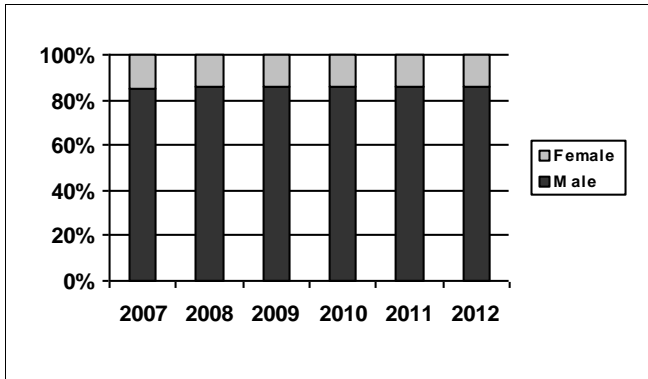
The percentage of youth who are being detained in a pre-disposition status remains the same as the previous 2 quarters.

| Summary of Pre-Disposition in Juvenile Halls | | | | |
|--|------|------|------|------|
| 2007 | 2008 | 2009 | 2010 | 2011 |
| 61% | 57% | 56% | 53% | 51% |

| 2012 Summary of Pre-Disposition Juvenile Halls | | | | |
|--|-----|-----|--|---------|
| Q1 | Q2 | Q3 | | Average |
| 52% | 52% | 52% | | 52% |

Third Quarter Report, 2012 - Juvenile Hall Data

Gender Distribution in Juvenile Halls

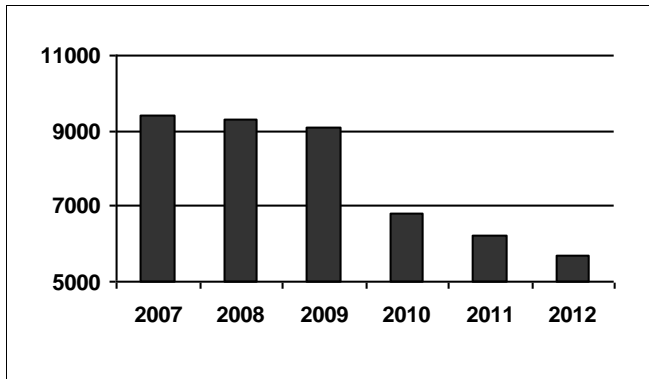


The percentage of boys in the juvenile hall population decreased by 1% in the 3rd quarter.

| Summary of Males in Juvenile Halls | | | | |
|------------------------------------|------|------|------|------|
| 2007 | 2008 | 2009 | 2010 | 2011 |
| 85% | 86% | 86% | 86% | 86% |

| 2012 Summary of Males in Juvenile Hall | | | | |
|--|-----|-----|--|---------|
| Q1 | Q2 | Q3 | | Average |
| 86% | 86% | 85% | | 86% |

Average Number of Juveniles Booked per Month

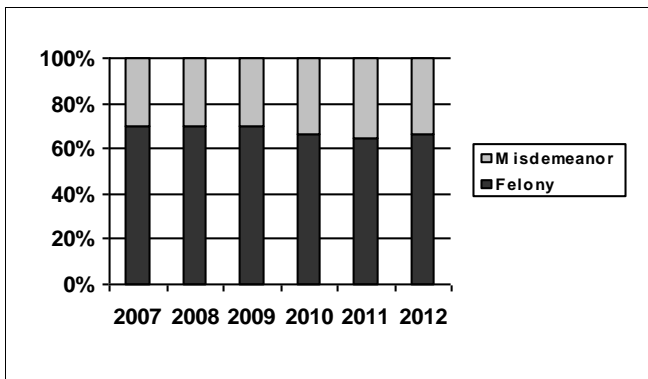


There were approximately 1,000 fewer juvenile hall bookings on average, in the 3rd quarter 2012 than there were in the same quarter in 2011.

| Summary of Juveniles Booked per Month | | | | |
|---------------------------------------|-------|-------|-------|-------|
| 2007 | 2008 | 2009 | 2010 | 2011 |
| 9,423 | 9,325 | 9,079 | 6,803 | 6,203 |

| 2012 Summary of Monthly Bookings | | | | |
|----------------------------------|-------|-------|--|---------|
| Q1 | Q2 | Q3 | | Average |
| 6,028 | 5,801 | 5,291 | | 5,705 |

Distribution of Charge in Juvenile Halls



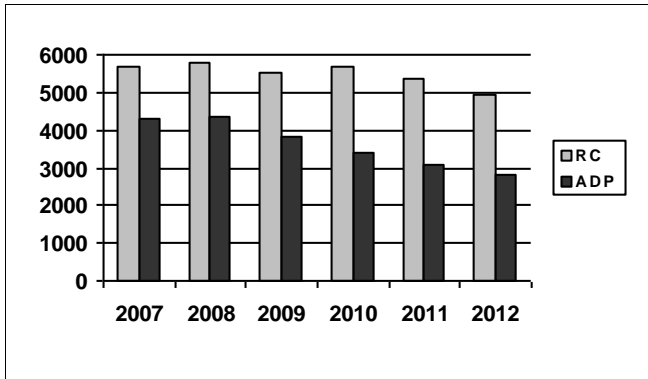
The percentage of youth in custody for felonies in the 3rd quarter 2012 increased by one percent over the previous quarter. It matches the annual figure of 66% reported in 2010.

| Summary of Felony Charges in Juvenile Halls | | | | |
|---|------|------|------|------|
| 2007 | 2008 | 2009 | 2010 | 2011 |
| 70% | 70% | 70% | 66% | 65% |

| 2012 Summary of Felony Charge Juvenile Hall | | | | |
|---|-----|-----|--|---------|
| Q1 | Q2 | Q3 | | Average |
| 66% | 65% | 66% | | 66% |

Third Quarter Report, 2012 - Camp Data

RC and ADP for Camps

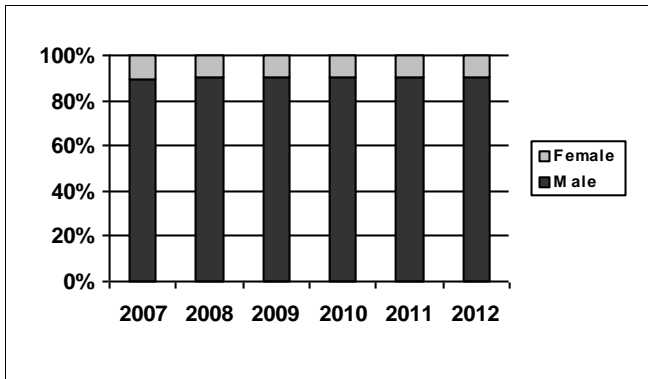


After a slight increase in the 2nd quarter, the average daily population of camps, decreased in the 3rd quarter.

| Summary of Camp ADP | | | | |
|---------------------|-------|-------|-------|-------|
| 2007 | 2008 | 2009 | 2010 | 2011 |
| 4,278 | 4,338 | 3,841 | 3,374 | 3,105 |

| 2012 Summary of Camp ADP | | | | |
|--------------------------|-------|-------|--|---------|
| Q1 | Q2 | Q3 | | Average |
| 2,838 | 2,879 | 2,795 | | 2,837 |

Gender Distribution in Camps

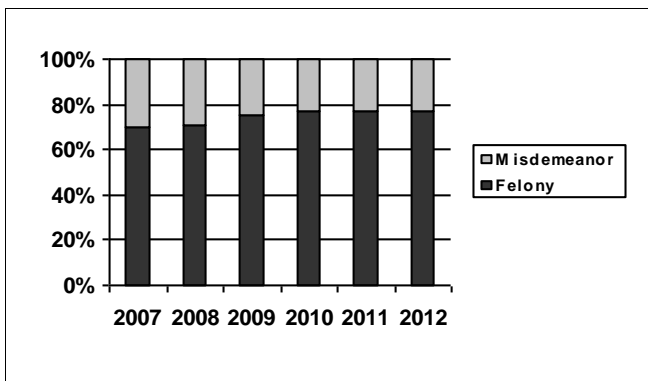


Girls continue to make up only 10% of the camp population.

| Summary of Males in Camps | | | | |
|---------------------------|------|------|------|------|
| 2007 | 2008 | 2009 | 2010 | 2011 |
| 89% | 90% | 90% | 90% | 90% |

| 2012 Summary of Males in Camps | | | | |
|--------------------------------|-----|-----|--|---------|
| Q1 | Q2 | Q3 | | Average |
| 90% | 90% | 90% | | 90% |

Distribution of Charge in Camps



The percentage of youth committed to camp with felony charges decreased 2% from the 2nd quarter. The average to this point in 2012 is 77%, the same charge distribution as in 2010 and 2011.

| Summary of Felonies in Camps | | | | |
|------------------------------|------|------|------|------|
| 2007 | 2008 | 2009 | 2010 | 2011 |
| 70% | 71% | 75% | 77% | 77% |

| 2012 Summary of Felonies in Camps | | | | |
|-----------------------------------|-----|-----|--|---------|
| Q1 | Q2 | Q3 | | Average |
| 77% | 78% | 76% | | 77% |

INSTRUCTIONS FOR INTERPRETING THE SURVEY REPORT

The Overall Capacity, Population and ADP Page is designed to present the Juvenile Detention Profile Survey results for the major reporting categories.

- **Capacity:** this category presents the Rated Capacity (RC) in terms of the number of beds in juvenile halls and camps/ranches that meet the Board of State and Community Corrections standards.
- **High One-Day:** each jurisdiction reports for each month in the quarter, the juvenile hall and camp/ranch populations that, together, constituted the highest one-day count of the month.
- **Other:** this category refers to the sum of all juveniles who are receiving custody credit while on home supervision with or without electronic monitoring, or in alternative confinement programs.

The County Breakout Report Page is designed to present county-specific information.

- **County comparison:** this page identifies the ADP for each county and the percent that county contributes to the total state juvenile detention population. The counties are ranked in descending order based on their percentage of the overall juvenile detention population in the state.

The Additional Information Page is designed to present all the remaining Juvenile Detention Profile Survey results not already listed.

- **One-Day Snapshot:** the percentages in this section are percentages of the total ADP for juvenile halls, camps/ranches, and other juveniles in the system.
- **Average number of days that one or more facilities in a county exceeded the Rated Capacity:** this value is the result of taking all of the counties “number of days of crowding” and averaging the figures submitted by all the jurisdictions. If a jurisdiction had no crowding days, that jurisdiction was not included in the computation. In other words, the value presented indicates the typical number of crowding days per month experienced by jurisdictions that have had one or more days of crowding in the Third Quarter of Calendar Year 2012.
- **Average Length of Stay:** these numbers are averages for all juveniles in each category:
 - 1) “juvenile hall (all releases)” is computed by first taking the mean length of stay for all juveniles released from juvenile halls in a jurisdiction. Next, all the jurisdictions’ means are averaged to produce a statewide figure;
 - 2) “juvenile hall to camps/ranches” is computed in the same fashion, but includes only those juveniles released from juvenile hall and placed in a camp or ranch;
 - 3) “juvenile hall to other out-of-home placements” presents the average length of stay for that subset of juveniles.