



# JUVENILE DETENTION PROFILE SURVEY

SECOND QUARTER CALENDAR YEAR 2014  
SURVEY RESULTS



## EXPLANATION OF RESULTS

The following pages contain the Juvenile Detention Profile Survey (JDPS) results for the Second Quarter of Calendar Year 2014. Page 2 contains totals for major categories such as the average daily population (ADP), highest one-day population, gender, and age range of detained minors. Page 3 contains information regarding counties' ADP and rated capacity (RC) breakouts, and page 4 contains information about a wide range of juvenile detention facility issues, including mental health needs, crowding, number of bookings, and average length of stay.

***Pages 5, 6, and 7 contain trend information compiled from Calendar Year 2009 through Calendar Year 2014. The trend data is separated into Juvenile Hall related data and Camp related data.***

Please keep the following in mind when reviewing this information:

- For overall capacity, crowding (highest one-day population – the count of minors in detention on the day of each county's highest population) and ADP (the average daily detention population for the reporting period), we have complete data from all jurisdictions in the state that operate juvenile detention facilities.
- Each jurisdiction provides us with the average population, computed across all the days in the month, for each of the three months in the quarter. The weighted average across the three months is then computed for each jurisdiction (with the monthly averages weighted by the number of days in the month). The jurisdictions' ADPs are then combined to produce the state's total ADP.
- For some variables (other than ADP), we did not receive complete data from all jurisdictions. In such instances, we used statistical procedures to estimate the statewide total.
- Felony/misdemeanor, gender counts, and age-range breakouts are based upon a one-day snapshot (on the 15<sup>th</sup> day of the final month of the quarter). These values are used to determine the percentage of the population in each felony/misdemeanor, gender, and age-range category. The percentages are then applied to the total ADP to project the expected ADP in each of the felony/misdemeanor, gender, and age-range categories.
- In addition to the population breakdowns for juvenile halls and camps, the report contains like information for youth who were part of non-facility based, alternative to detention programs. Youth in that category are listed under "Other Detention." Other detention includes home supervision with and without electronic monitoring, day reporting centers, work programs, and other alternatives to detention **for which youth are credited with custody time.**
- ***Please note:***
  - In early 2011, eight regional trainings were held for county reporters and contributors to the JDPS. When interpreting the JDPS results from the second quarter of 2011 forward, please consider that the clarification of variable definitions and calculations which occurred at those trainings may explain some unanticipated differences when compared to prior quarters.
  - Each quarter, every county with juvenile detention facilities submits their data to the Board of State and Community Corrections (BSCC). While we make every effort to review data for accuracy, including contacting individual counties for clarification, the BSCC cannot be responsible for data reporting errors made at the county level.

**Board of State and Community Corrections  
 Juvenile Detention Profile Survey - 2nd Quarter, 2014  
 Overall Capacity, Population and ADP**

<b>Overall Capacity and Population</b>				
	<b>JUVENILE HALL</b>	<b>CAMPS</b>	<b>OTHER</b>	<b>TOTAL</b>
<b>ADP</b>	3,803.1	2,194.7	1,602.6	7,600.4
<b>Percent of Total</b>	50.0%	28.9%	21.1%	100.0%
<b>RC *</b>	8,254.4	4,813.6		13,068.1
<b>High One Day</b>	4,286.0	2,371.0		6,657.0

<b>Gender by Detention Type</b>								
	<b>JUVENILE HALL</b>		<b>CAMPS</b>		<b>OTHER</b>		<b>TOTAL</b>	
<b>GENDER</b>	<b>ADP</b>	<b>%</b>	<b>ADP</b>	<b>%</b>	<b>ADP</b>	<b>%</b>	<b>ADP</b>	<b>%</b>
<b>Male</b>	3,190.3	83.9%	2,039.9	92.9%	1,338.2	83.5%	6,568.4	86.4%
<b>Female</b>	612.8	16.1%	154.8	7.1%	264.5	16.5%	1,032.0	13.6%
<b>TOTAL</b>	3,803.1	100.0%	2,194.7	100.0%	1,602.6	100.0%	7,600.4	100.0%

<b>Disposition by Gender for Juvenile Halls</b>							
	<b>MALE</b>		<b>FEMALE</b>		<b>TOTAL</b>		
<b>DISPOSITION</b>	<b>Number</b>	<b>%</b>	<b>Number</b>	<b>%</b>	<b>Number</b>	<b>%</b>	
<b>Pre-Disposition</b>	1,712.9	53.7%	323.6	52.8%	2,036.5	53.5%	
<b>Post-Disposition</b>	1,477.4	46.3%	289.2	47.2%	1,766.6	46.5%	
<b>TOTAL</b>	3,190.3	100.0%	612.8	100.0%	3,803.1	100.0%	

<b>Disposition by Gender for Other Detention</b>							
	<b>MALE</b>		<b>FEMALE</b>		<b>TOTAL</b>		
<b>DISPOSITION</b>	<b>Number</b>	<b>%</b>	<b>Number</b>	<b>%</b>	<b>Number</b>	<b>%</b>	
<b>Pre-Disposition</b>	622.8	46.5%	127.2	48.1%	750.0	46.8%	
<b>Post-Disposition</b>	715.4	53.5%	137.3	51.9%	852.6	53.2%	
<b>TOTAL</b>	1,338.2	100.0%	264.5	100.0%	1,602.6	100.0%	

<b>Age Range by Type of Detention (One-Day Snapshot)</b>							
	<b>JUVENILE HALL</b>		<b>CAMPS</b>		<b>TOTAL</b>		
<b>AGE RANGES</b>	<b>Number</b>	<b>%</b>	<b>Number</b>	<b>%</b>	<b>Number</b>	<b>%</b>	
<b>Under 12</b>	4.0	0.1%	0.0	0.0%	4.0	0.1%	
<b>12 to 14</b>	406.0	10.8%	159.0	7.0%	565.0	9.3%	
<b>15 to 17</b>	2,989.0	79.5%	1,619.0	71.0%	4,608.0	76.3%	
<b>18 Over</b>	363.0	9.6%	503.0	22.1%	866.0	14.3%	
<b>TOTAL</b>	3,762.0	100.0%	2,281.0	100.0%	6,043.0	100.0%	

\* RC is Rated Capacity which is the number of beds that comply with standards set forth in Title 24, California Code of Regulations.

**County Breakout Report - 2nd Quarter, 2014  
Facilities and Alternative Detention**

	<b>County</b>	<b>Rated Capacity</b>	<b>Facilities Detention</b>	<b>Other Detention</b>	<b>ADP</b>	<b>Percent of Total</b>	<b>Cumulative Percent</b>
1	Los Angeles	3,631	1,475.2	477.14	1,952.4	25.69%	25.69%
2	San Diego	1,105	489.6	171.12	660.7	8.69%	34.38%
3	Orange	743	412.8	53.77	466.5	6.14%	40.52%
4	Fresno	450	320.1	129.71	449.8	5.92%	46.44%
5	Sacramento	424	198.7	165.93	364.7	4.80%	51.24%
6	Kern	485	354.9	0.94	355.8	4.68%	55.92%
7	Santa Clara	474	185.6	127.32	313.0	4.12%	60.04%
8	San Bernardino	450	273.7	0.00	273.7	3.60%	63.64%
9	Tulare	330	146.7	109.28	256.0	3.37%	67.00%
10	Riverside	515	203.3	29.91	233.2	3.07%	70.07%
11	Contra Costa	390	232.7	0.00	232.7	3.06%	73.13%
12	Alameda	463	212.1	0.00	212.1	2.79%	75.93%
13	San Mateo	245	113.3	64.11	177.5	2.33%	78.26%
14	Merced	120	60.7	76.14	136.9	1.80%	80.06%
15	Monterey	190	95.4	26.68	122.0	1.61%	81.67%
16	Sonoma	164	82.8	38.49	121.3	1.60%	83.26%
17	Stanislaus	218	91.9	25.91	117.8	1.55%	84.81%
18	San Joaquin	224	109.7	0.00	109.7	1.44%	86.26%
19	Santa Barbara	232	101.3	0.00	101.3	1.33%	87.59%
20	San Francisco	198	96.0	0.00	96.0	1.26%	88.85%
21	Ventura	420	96.0	0.00	96.0	1.26%	90.11%
22	Solano	148	77.6	13.36	91.0	1.20%	91.31%
23	Kings	85	56.0	10.35	66.3	0.87%	92.18%
24	Madera	70	52.8	11.39	64.2	0.84%	93.03%
25	Yuba	120	46.5	0.00	46.5	0.61%	93.64%
26	Yolo	90	23.2	23.27	46.4	0.61%	94.25%
27	El Dorado	80	32.3	9.01	41.3	0.54%	94.80%
28	Butte	120	38.0	0.66	38.6	0.51%	95.30%
29	Shasta	90	23.0	14.00	37.0	0.49%	95.79%
30	Lake	30	20.0	9.64	29.7	0.39%	96.18%
31	Humboldt	44	23.5	4.88	28.4	0.37%	96.56%
32	Napa	50	27.8	0.00	27.8	0.37%	96.92%
33	Nevada	60	22.6	4.34	27.0	0.36%	97.28%
34	Del Norte	62	25.9	0.00	25.9	0.34%	97.62%
35	Placer	78	25.3	0.00	25.3	0.33%	97.95%
36	San Luis Obispo	45	24.9	0.00	24.9	0.33%	98.28%
37	Santa Cruz	42	19.2	0.00	19.2	0.25%	98.53%
38	Tehama	60	16.2	0.00	16.2	0.21%	98.74%
39	Imperial	72	15.2	0.00	15.2	0.20%	98.94%
40	San Benito	20	13.7	0.99	14.6	0.19%	99.14%
41	Lassen	40	11.0	1.00	12.0	0.16%	99.29%
42	Marin	40	8.6	3.27	11.9	0.16%	99.45%
43	Glenn	22	11.7	0.00	11.7	0.15%	99.60%
44	Mendocino	43	10.9	0.00	10.9	0.14%	99.75%
45	Siskiyou	40	10.7	0.00	10.7	0.14%	99.89%
46	Inyo	14	4.5	0.00	4.5	0.06%	99.95%
47	Trinity	28	4.0	0.00	4.0	0.05%	100.00%
48	Mariposa	4	0.0	0.00	0.0	0.00%	100.00%
49	Tuolumne	0	0.0	0.00	0.0	0.00%	100.00%
		<b>13,068</b>	<b>5,997.8</b>	<b>1,602.6</b>	<b>7,600.4</b>	<b>100.00%</b>	

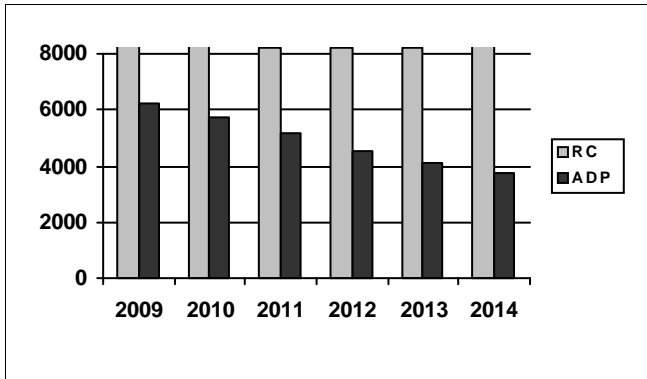
\*ADP on County Breakout Report may not equal ADP on other Summary Reports due to rounding

## Juvenile Detention Profile Survey

2nd Quarter Report 2014	One Day Snapshot									
	Rated Capacity	Misdemeanor		Felony		Pre-Disposition		Post-Disposition		Total ADP
		Male	Female	Male	Female	Male	Female	Male	Female	
<b>Juvenile Halls</b>	8,254.4	16.9%	4.1%	26.9%	3.8%	1,712.9	323.6	1,477.4	289.2	3,803.1
<b>Camps / Ranches</b>	4,813.6	5.7%	1.1%	21.0%	1.6%			2,039.9	154.8	2,194.7
<b>Other Juveniles in the System</b>		<b>Male</b>	<b>Female</b>	<b>Male</b>	<b>Female</b>	<b>Male</b>	<b>Female</b>	<b>Male</b>	<b>Female</b>	<b>Total ADP</b>
Juveniles on home supervision with electronic monitoring		3.4%	0.7%	6.3%	1.2%	413.1	80.4	437.2	81.0	1,011.7
Juveniles on home supervision without electronic monitoring		1.7%	0.5%	2.2%	0.4%	206.4	45.8	137.9	36.5	426.6
Juveniles alternative confinement programs		0.6%	0.5%	1.4%	0.1%	3.4	1.0	140.2	19.7	164.3
<b>Grand Totals</b>		<b>28.3%</b>	<b>7.0%</b>	<b>57.7%</b>	<b>7.0%</b>	<b>2,335.7</b>	<b>450.8</b>	<b>4,232.7</b>	<b>581.2</b>	<b>7,600.4</b>
<b>Mental Health Snapshot</b>										
Number of open mental health cases this day									3,703.7	
Number of juveniles receiving psychotropic medication									1,400.3	
<b>Crowding</b>										
Average daily population of juveniles in other jurisdictions DUE TO LACK OF SPACE									0.0	
Number of juveniles released early DUE TO LACK OF SPACE									0.0	
Average number of days that one or more facilities in a county exceeded the Rated Capacity									0.0	
<b>Average Bookings Per Month</b>										
Number of Juvenile Hall bookings/admissions									4,738.5	
Number of bookings for weapon-related offenses									316.3	
Number of 601 bookings									20.7	
Number of 777 bookings									980.8	
Number of direct file {WIC 602(b) and 707(d)} bookings									38.0	
<b>Final Month of the Quarter (One-Day Snapshot)</b>										
Detained for 707b Offense									767.0	
Awaiting placement									404.0	
Awaiting transport to a camp									191.0	
Awaiting transfer to Youth Authority									48.0	
Court commitments to juvenile hall (Ricardo M)									517.0	
Found unfit per 707.01 WIC									58.0	
Direct files to Adult Court-602(b) and 707(d) WIC									285.0	
Hospitalized outside detention facility for MEDICAL CARE									6.0	
Hospitalized outside detention facility for MENTAL HEALTH CARE									7.0	
Believed to be criminal illegal aliens									119.2	
<b>Average Length of Stay</b>										
Juvenile Hall (all releases)									25.4	
Juvenile Hall to Camps									30.0	
Juvenile Hall to other out-of-home placements (i.e. group homes or foster homes)									47.9	
Juvenile Hall who were found unfit (per juvenile court)									397.4	
Juvenile Hall who were direct filings to adult court									281.1	
Camps (all releases)									129.7	
<b>Cumulative Total for the Quarter</b>										
<b>Detention Behavior</b>						<b>Juvenile Halls</b>	<b>Camps / Ranches</b>	<b>Other Detention</b>		
Assaults by juveniles on staff						42.0	9.0	0.0		
Escapes						1.0	29.0	8.0		
Suicide Attempts						22.0	4.0	0.0		
Suicides						0.0	0.0	0.0		

## Second Quarter Report, 2014 - Juvenile Hall Data

### Rated Capacity RC and ADP for Juvenile Halls

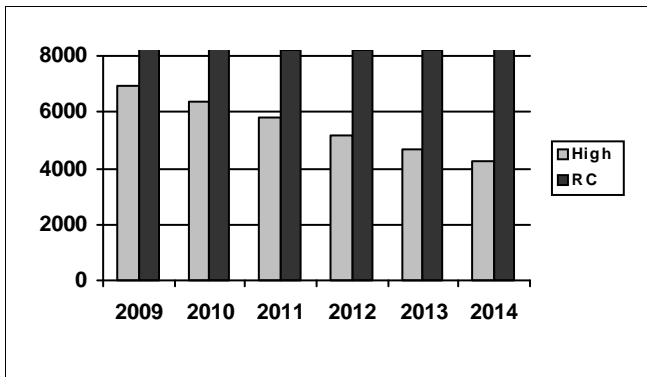


The ADP of Juvenile Halls increased by 121 youth from the previous quarter. Although ADP in Juvenile Halls have been trending downward, increases in ADP have been noticed historically during the second quarter of a given year. Based on historical trends, we can expect ADP to decline in the third quarter and for the 2014 annual ADP to be less than 2013.

Summary of Juvenile Hall ADP				
2009	2010	2011	2012	2013
6,197	5,721	5,137	4,546	4,103

2014 Summary of Juvenile Hall ADP			
Q1	Q2		Average
3,682	3,803		3,743

### Juvenile Hall Highest One-Day Population and RC

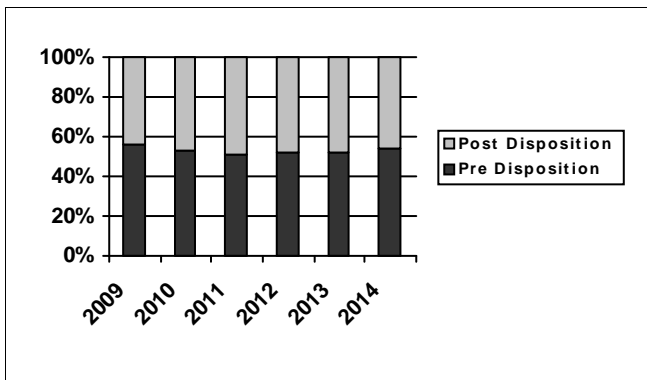


As noted above, increase in population commonly occurs in the second quarter of a given year. Although slightly higher than the first quarter, the highest one-day population is still below the 2013 average.

Summary of Juvenile Hall Highest One Day				
2009	2010	2011	2012	2013
6,914	6,386	5,795	5,154	4,687

2014 Summary of Highest One-Day Population			
Q1	Q2		Average
4,198	4,286		4,242

### Pre-Disposition in Juvenile Halls



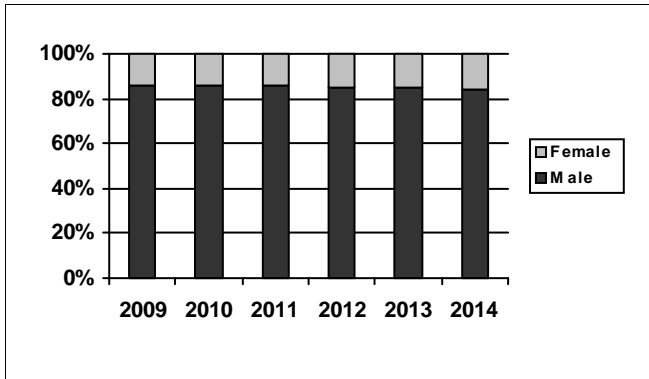
The percentage of those in a pre-disposition status remains unchanged as compared to the first quarter of 2014. This marks the second quarter at 54%, which has not been seen since the first quarter of 2010.

Summary of Pre-Disposition in Juvenile Halls				
2009	2010	2011	2012	2013
56%	53%	51%	52%	52%

2014 Summary of Pre-Disposition Juvenile Halls			
Q1	Q2		Average
54%	54%		54%

## Second Quarter Report, 2014 - Juvenile Hall Data

### Gender Distribution in Juvenile Halls

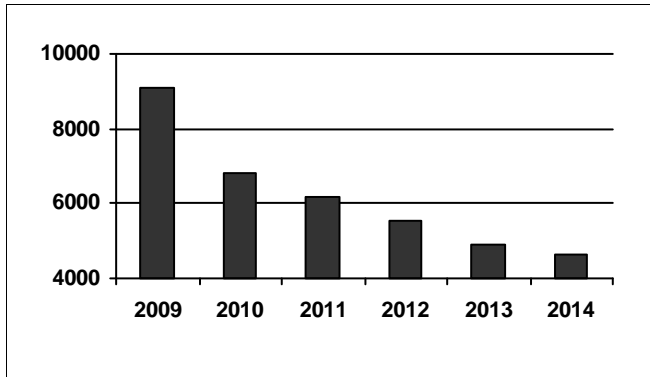


Between the first and second quarter of 2014, the percentage of boys in Juvenile Hall decreased from 85% to 84%.

Summary of Males in Juvenile Halls				
2009	2010	2011	2012	2013
86%	86%	86%	85%	85%

2014 Summary of Males in Juvenile Hall			
Q1	Q2		Average
85%	84%		84%

### Average Number of Juveniles Booked per Month

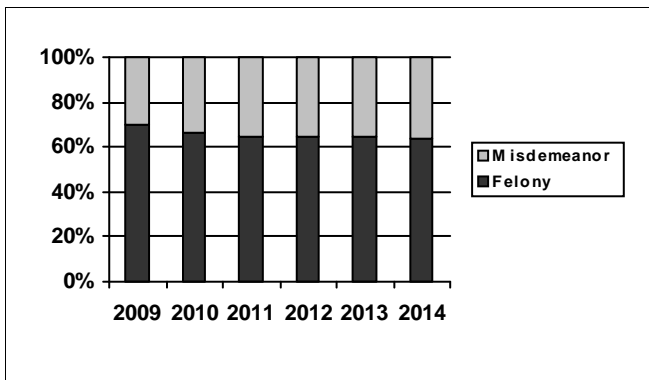


The average number of Juvenile Hall bookings increased by 158 from the previous quarter, but it is still lower than the 2013 average. The second quarter increase in bookings is above the first quarter, which happens frequently. Past population patterns suggest that the number of bookings will decrease by the third quarter.

Summary of Juveniles Booked per Month				
2009	2010	2011	2012	2013
9,079	6,802	6,202	5,556	4,881

2014 Summary of Monthly Bookings			
Q1	Q2		Average
4,581	4,739		4,660

### Distribution of Charge in Juvenile Halls



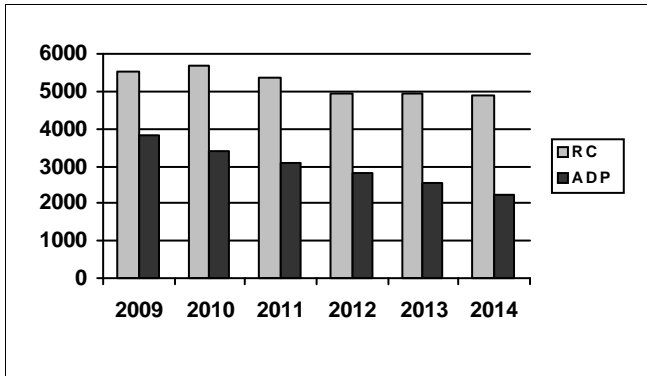
For the past three years (2011-2013), the annual percentage of Juvenile Hall population charged with a felony offense remained at 65%. The distribution of charges has come closer together in the second quarter of 2014. At 59% of youth having felony charges, this marks the lowest percentage of felony charges in the history of this report.

Summary of Felony Charges in Juvenile Halls				
2009	2010	2011	2012	2013
70%	66%	65%	65%	65%

2014 Summary of Felony Charge Juvenile Hall			
Q1	Q2		Average
64%	59%		61%

## Second Quarter Report, 2014 - Camp Data

### RC and ADP for Camps

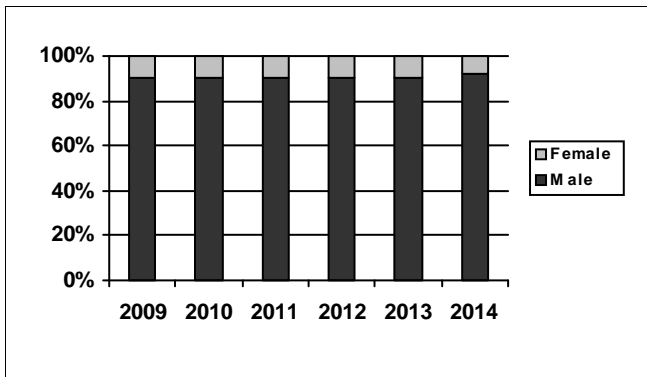


Similar to the average daily population in Juvenile Halls, Camps historically have seen slight increases in the second quarter of a given year. In 2014, we see a 3.2% decrease between the first and second quarters. This decrease is consistent with the declining Camp population.

Summary of Camp ADP				
2009	2010	2011	2012	2013
3,841	3,374	3,105	2,811	2,524

2014 Summary of Camp ADP			
Q1	Q2		Average
2,267	2,195		2,231

### Gender Distribution in Camps

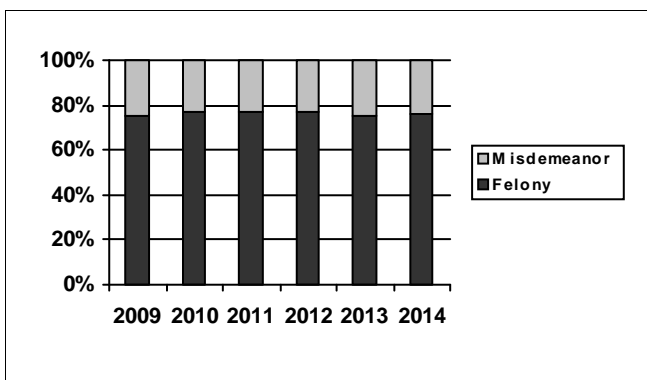


The Camp gender distribution between boys and girls has typically been at 90% and 10%, respectively. In the second quarter of 2014, the male population increased to 93%, lowering the female population to 7%.

Summary of Males in Camps				
2009	2010	2011	2012	2013
90%	90%	90%	90%	90%

2014 Summary of Males in Camps			
Q1	Q2		Average
91%	93%		92%

### Distribution of Charge in Camps



In 2010, 2011, and 2012, youth with felony offenses in Camps were at an all-time high, making up 77% of the total Camp population. In 2013 and the first quarter of 2014, we saw this percentage drop back down to the 2009 levels. Now in the second quarter of 2014, this percentage has risen back to the 2010-2012 levels.

Summary of Felonies in Camps				
2009	2010	2011	2012	2013
75%	77%	77%	77%	75%

2014 Summary of Felonies in Camps			
Q1	Q2		Average
75%	77%		76%



## INSTRUCTIONS FOR INTERPRETING THE SURVEY REPORT

**The Overall Capacity, Population and ADP page** is designed to present the JDPS results for the major reporting categories.

- **Capacity:** this category presents the RC in terms of the number of beds in juvenile halls and camps/ranches that meet the BSCC standards.
- **High One Day:** for each month in the quarter, each jurisdiction reports the juvenile hall and camp/ranch populations that together constituted the highest one-day count of the month.
- **Other:** this category refers to the sum of all juveniles who are receiving custody credit while on home supervision, with or without electronic monitoring, or are in alternative confinement programs.

**The County Breakout Report page** is designed to present county-specific information.

- **County comparison:** this page identifies the ADP for each county and the percent that county contributes to the total state juvenile detention population. The counties are ranked in descending order based on their percentage of the overall juvenile detention population in the state.

**The JDPS additional information page** is designed to present all the remaining JDPS results not already listed.

- **One Day Snapshot:** the percentages in this section are percentages of the total ADP for juvenile halls, camps/ranches, and other juveniles in the system.
- **Average number of days that one or more facilities in a county exceeded the RC:** this value is the result of taking all of the counties “number of days of crowding” and averaging the figures submitted by all the jurisdictions. If a jurisdiction had no crowding days, that jurisdiction was not included in the computation. In other words, the value presented indicates the typical number of crowding days per month experienced by jurisdictions that have had one or more days of crowding in the Second Quarter of Calendar Year 2014.
- **Average Length of Stay:** these numbers are averages for all juveniles in each category:
  - 1) “Juvenile Hall (all releases)” is computed by first taking the mean length of stay for all juveniles released from juvenile halls in a jurisdiction. Next, all the jurisdictions’ means are averaged to produce a statewide figure.
  - 2) “Juvenile Hall to Camps [ranches]” is computed in the same fashion, but includes only those juveniles released from juvenile hall and placed in a camp or ranch.
  - 3) “Juvenile Hall to other out-of-home placements (i.e. group homes or foster homes)” presents the average length of stay for that subset of juveniles.