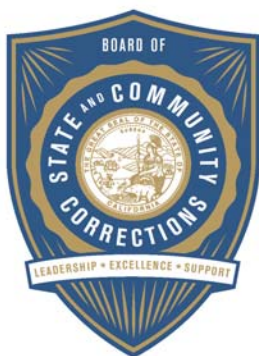


JUVENILE DETENTION PROFILE SURVEY

.....

**Second Quarter Calendar Year 2013
Survey Results**



BOARD OF STATE AND COMMUNITY CORRECTIONS

FACILITIES STANDARDS OPERATIONS AND CONSTRUCTION DIVISION
600 Bercut Drive, Sacramento, CA 95811
916.445.5073 **PHONE**
916.327.3317 **FAX**
bscc.ca.gov

Leadership



Excellence



Support

EXPLANATION OF RESULTS

The following pages contain the Juvenile Detention Profile Survey (JDPS) results for the Second Quarter of Calendar Year 2013. Page 2 contains totals for major categories such as the average daily population (ADP), highest one-day population, gender, and age range of detained minors. Page 3 contains information regarding counties' ADP and rated capacity (RC) breakouts, and page 4 contains information about a wide range of juvenile detention facility issues including mental health needs, crowding, number of bookings, and average length of stay.

Pages 5, 6, and 7 contain trend information compiled from Calendar Year 2008 through Calendar Year 2013. The trend data is separated into Juvenile Hall related data and Camp related data.

Please keep the following in mind when reviewing this information:

- For overall capacity, crowding (highest one-day population – the count of minors in detention on the day of each county's highest population) and ADP (the average daily detention population for the reporting period), we have complete data from all jurisdictions in the state that operate juvenile detention facilities.
- Each jurisdiction provides us with the average population, computed across all the days in the month, for each of the three months in the quarter. The weighted average across the three months is then computed for each jurisdiction (with the monthly averages weighted by the number of days in the month). The jurisdictions' ADPs are then combined to produce the state's total ADP.
- For some variables (other than ADP), we did not receive complete data from all jurisdictions. In such instances, we used statistical procedures to estimate the statewide total.
- Felony/misdemeanor, gender counts, and age-range breakouts are based upon a one-day snapshot (on the 15th day of the final month of the quarter). These values are used to determine the percentage of the population in each felony/misdemeanor, gender, and age category. The percentages are then applied to the total ADP to project the expected ADP in each of the felony/misdemeanor, gender, and age-range categories.
- In addition to the population breakdowns for juvenile halls and camps, the report contains like information for youth who were part of non-facility based, alternative to detention programs. Youth in that category are listed under "Other Detention." Other detention includes home supervision with and without electronic monitoring, day reporting centers, work programs, and other alternatives to detention **for which youth are credited with custody time.**
- ***Please note:***
 - In early 2011, eight regional trainings were held for county reporters and contributors to the JDPS. When interpreting the JDPS results from the second quarter of 2011 forward, please consider that the clarification of variable definitions and calculations which occurred at those trainings may explain some unanticipated differences when compared to prior quarters.
 - Each quarter, every county with juvenile detention facilities submits their data to the Board of State and Community Corrections (BSCC). While we make every effort to review data for accuracy, including contacting individual counties for clarification, the BSCC cannot be responsible for data reporting errors made at the county level.

Board of State and Community Corrections
Juvenile Detention Profile Survey - 2nd Quarter, 2013
Overall Capacity, Population and ADP

Overall Capacity and Population							
	JUVENILE HALL		CAMPS		OTHER	TOTAL	
ADP	4,413.4		2,596.5		1,642.9	8,652.7	
Percent of Total	51.0%		30.0%		19.0%	100.0%	
RC *	8,218.5		4,909.3			13,127.8	
High One Day	4,942.0		3,221.0			8,163.0	

Gender by Detention Type								
	JUVENILE HALL		CAMPS		OTHER		TOTAL	
GENDER	ADP	%	ADP	%	ADP	%	ADP	%
Male	3,731.4	84.5%	2,338.1	90.0%	1,358.6	82.7%	7,428.1	85.8%
Female	682.0	15.5%	258.4	10.0%	284.2	17.3%	1,224.6	14.2%
TOTAL	4,413.4	100.0%	2,596.5	100.0%	1,642.9	100.0%	8,652.7	100.0%

Disposition by Gender for Juvenile Halls							
	MALE		FEMALE		TOTAL		
DISPOSITION	Number	%	Number	%	Number	%	
Pre-Disposition	1,898.2	50.9%	353.3	51.8%	2,251.5	51.0%	
Post-Disposition	1,833.2	49.1%	328.7	48.2%	2,161.9	49.0%	
TOTAL	3,731.4	100.0%	682.0	100.0%	4,413.4	100.0%	

Disposition by Gender for Other Detention							
	MALE		FEMALE		TOTAL		
DISPOSITION	Number	%	Number	%	Number	%	
Pre-Disposition	534.0	39.3%	112.9	39.7%	646.9	39.4%	
Post-Disposition	824.6	60.7%	171.3	60.3%	995.9	60.6%	
TOTAL	1,358.6	100.0%	284.2	100.0%	1,642.9	100.0%	

Age Range by Type of Detention (One-Day Snapshot)							
	JUVENILE HALL		CAMPS		TOTAL		
AGE RANGES	Number	%	Number	%	Number	%	
Under 12	1.0	0.0%	1.0	0.0%	2.0	0.0%	
12 to 14	487.0	11.0%	138.0	5.3%	625.0	8.8%	
15 to 17	3,492.0	78.6%	1,953.0	74.4%	5,445.0	77.0%	
18 Over	463.0	10.4%	532.0	20.3%	995.0	14.1%	
TOTAL	4,443.0	100.0%	2,624.0	100.0%	7,067.0	100.0%	

* RC is Rated Capacity which is the number of beds that comply with standards set forth in Title 24, California Code of Regulations.

**County Breakout Report - 2nd Quarter, 2013
Facilities and Alternative Detention**

	County	Rated Capacity	Facilities Detention	Other Detention	ADP	Percent of Total	Cumulative Percent
1	Los Angeles	3,683	1,833.2	534.76	2,367.9	27.37%	27.37%
2	San Diego	1,105	678.2	180.87	859.0	9.93%	37.29%
3	Orange	743	485.7	77.70	563.4	6.51%	43.81%
4	Fresno	450	324.8	116.00	440.8	5.09%	48.90%
5	Santa Clara	474	219.7	153.74	373.5	4.32%	53.22%
6	Sacramento	444	196.9	159.36	356.3	4.12%	57.33%
7	Kern	475	349.0	2.20	351.2	4.06%	61.39%
8	Riverside	527	285.9	45.46	331.4	3.83%	65.22%
9	San Bernardino	450	291.0	0.00	291.0	3.36%	68.58%
10	Tulare	330	182.8	65.71	248.5	2.87%	71.46%
11	Alameda	463	238.5	0.00	238.5	2.76%	74.21%
12	Contra Costa	390	218.9	0.00	218.9	2.53%	76.74%
13	San Mateo	245	135.3	76.37	211.7	2.45%	79.19%
14	Monterey	190	125.0	15.02	140.0	1.62%	80.81%
15	Santa Barbara	272	134.1	0.00	134.1	1.55%	82.36%
16	San Joaquin	224	132.0	0.00	132.0	1.53%	83.88%
17	Stanislaus	178	104.9	18.30	123.2	1.42%	85.31%
18	Merced	120	74.6	48.42	123.0	1.42%	86.73%
19	Sonoma	164	76.4	45.24	121.6	1.41%	88.13%
20	Ventura	420	110.1	0.00	110.1	1.27%	89.41%
21	Solano	148	94.1	12.73	106.8	1.23%	90.64%
22	San Francisco	234	95.4	0.00	95.4	1.10%	91.74%
23	Madera	70	54.6	7.94	62.6	0.72%	92.47%
24	Kings	125	59.8	0.33	60.1	0.70%	93.16%
25	Yuba	120	51.6	0.00	51.6	0.60%	93.76%
26	Butte	60	48.7	1.00	49.7	0.57%	94.33%
27	Yolo	90	25.3	23.19	48.5	0.56%	94.89%
28	El Dorado	80	38.0	9.70	47.7	0.55%	95.44%
29	Shasta	56	28.4	18.64	47.0	0.54%	95.99%
30	Del Norte	62	31.9	0.00	31.9	0.37%	96.35%
31	Humboldt	44	26.9	4.79	31.7	0.37%	96.72%
32	San Luis Obispo	45	30.3	0.00	30.3	0.35%	97.07%
33	Placer	78	28.3	0.00	28.3	0.33%	97.40%
34	Lake	30	20.0	6.70	26.7	0.31%	97.71%
35	Mendocino	43	25.0	0.00	25.0	0.29%	98.00%
36	Napa	50	22.5	0.00	22.5	0.26%	98.26%
37	Santa Cruz	42	22.5	0.00	22.5	0.26%	98.52%
38	Imperial	72	20.6	0.00	20.6	0.24%	98.75%
39	Nevada	60	11.6	8.01	19.6	0.23%	98.98%
40	Lassen	40	8.7	5.98	14.7	0.17%	99.15%
41	Marin	40	11.1	2.36	13.4	0.16%	99.30%
42	San Benito	20	13.0	0.33	13.4	0.15%	99.46%
43	Tehama	60	12.4	0.00	12.4	0.14%	99.60%
44	Glenn	22	11.0	0.99	12.0	0.14%	99.74%
45	Siskiyou	40	7.3	0.00	7.3	0.08%	99.83%
46	Inyo	14	7.0	0.00	7.0	0.08%	99.91%
47	Trinity	28	7.0	0.00	7.0	0.08%	99.99%
48	Tuolumne	0	0.0	1.01	1.0	0.01%	100.00%
49	Mariposa	4	0.0	0.01	0.0	0.00%	100.00%
50	Mono	4	0.0	0.00	0.0	0.00%	100.00%
		13,128	7,009.8	1,642.9	8,652.7	100.00%	

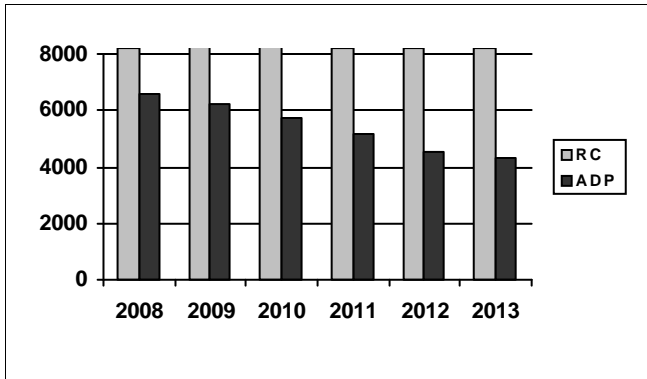
*ADP on County Breakout Report may not equal ADP on other Summary Reports due to rounding

Juvenile Detention Profile Survey

2nd Quarter Report 2013	One Day Snapshot									
	Rated Capacity	Misdemeanor		Felony		Pre-Disposition		Post-Disposition		Total ADP
		Male	Female	Male	Female	Male	Female	Male	Female	
Juvenile Halls	8,218.5	13.7%	4.4%	30.2%	3.8%	1,898.2	353.3	1,833.2	328.7	4,413.4
Camps / Ranches	4,909.3	6.9%	1.0%	20.1%	2.0%			2,338.1	258.4	2,596.5
Other Juveniles in the System		Male	Female	Male	Female	Male	Female	Male	Female	Total ADP
Juveniles on home supervision with electronic monitoring		3.3%	1.0%	5.8%	1.1%	367.5	76.1	517.3	107.9	1,068.9
Juveniles on home supervision without electronic monitoring		1.2%	0.4%	2.0%	0.4%	164.8	36.2	167.3	44.3	412.5
Juveniles alternative confinement programs		0.6%	0.4%	1.6%	0.1%	1.7	0.7	140.0	19.1	161.4
Grand Totals		25.8%	7.2%	59.6%	7.4%	2,432.2	466.2	4,995.9	758.3	8,652.7
Mental Health Snapshot										
Number of open mental health cases this day									3,912.0	
Number of juveniles receiving psychotropic medication									1,453.5	
Crowding										
Average daily population of juveniles in other jurisdictions DUE TO LACK OF SPACE									0.0	
Number of juveniles released early DUE TO LACK OF SPACE									1.0	
Average number of days that one or more facilities in a county exceeded the Rated Capacity									6.0	
Average Bookings Per Month										
Number of Juvenile Hall bookings/admissions									5,286.6	
Number of bookings for weapon-related offenses									321.6	
Number of 601 bookings									21.7	
Number of 777 bookings									1,185.1	
Number of direct file {WIC 602(b) and 707(d)} bookings									51.5	
Final Month of the Quarter (One-Day Snapshot)										
Detained for 707b Offense									872.0	
Awaiting placement									510.0	
Awaiting transport to a camp									275.0	
Awaiting transfer to Youth Authority									49.0	
Court commitments to juvenile hall (Ricardo M)									645.0	
Found unfit per 707.01 WIC									75.9	
Direct files to Adult Court-602(b) and 707(d) WIC									377.0	
Hospitalized outside detention facility for MEDICAL CARE									4.0	
Hospitalized outside detention facility for MENTAL HEALTH CARE									2.0	
Believed to be criminal illegal aliens									74.7	
Average Length of Stay										
Juvenile Hall (all releases)									26.9	
Juvenile Hall to Camps									30.6	
Juvenile Hall to other out-of-home placements (i.e. group homes or foster homes)									43.8	
Juvenile Hall who were found unfit (per juvenile court)									385.0	
Juvenile Hall who were direct filings to adult court									283.3	
Camps (all releases)									125.3	
Cumulative Total for the Quarter										
Detention Behavior						Juvenile Halls	Camps / Ranches	Other Detention		
Assaults by juveniles on staff						40.0	4.0	0.0		
Escapes						6.0	58.0	15.0		
Suicide Attempts						61.0	0.0	0.0		
Suicides						0.0	0.0	0.0		

Second Quarter Report, 2013 - Juvenile Hall Data

Rated Capacity RC and ADP for Juvenile Halls

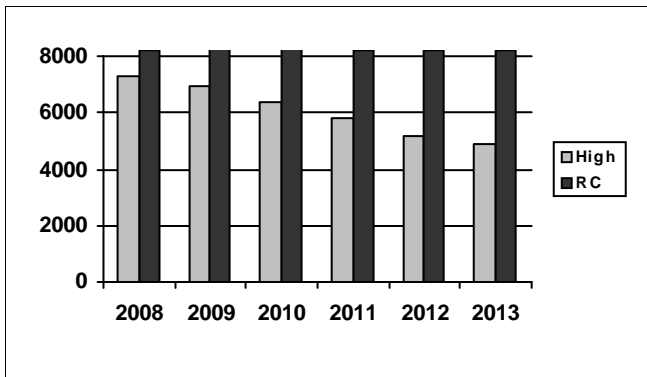


The ADP of juvenile halls increased slightly over the previous quarter. Increases in ADP have been noted historically during the second quarter of a given year. Based on previous year's data, we can expect the ADP to decline in the third quarter and for the annual juvenile hall ADP to be less than in 2012.

Summary of Juvenile Hall ADP				
2008	2009	2010	2011	2012
6,614	6,197	5,721	5,137	4,546

2013 Summary of Juvenile Hall ADP			
Q1	Q2		Average
4,209	4,413		4,312

Juvenile Hall Highest One-Day Population and RC

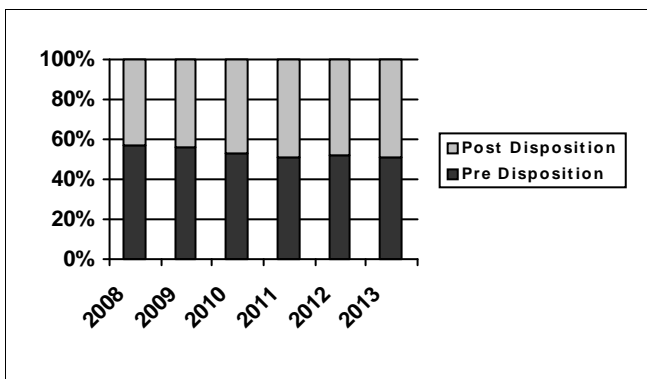


Although slightly higher than in the first quarter, the population of juvenile halls on the highest one-day population date is below the 2012 average. As noted above, this increase in population commonly occurs in the second quarter each year.

Summary of Juvenile Hall Highest One Day				
2008	2009	2010	2011	2012
7,317	6,914	6,386	5,795	5,154

2013 Summary of Highest One-Day Population			
Q1	Q2		Average
4,812	4,942		4,877

Pre-Disposition in Juvenile Halls



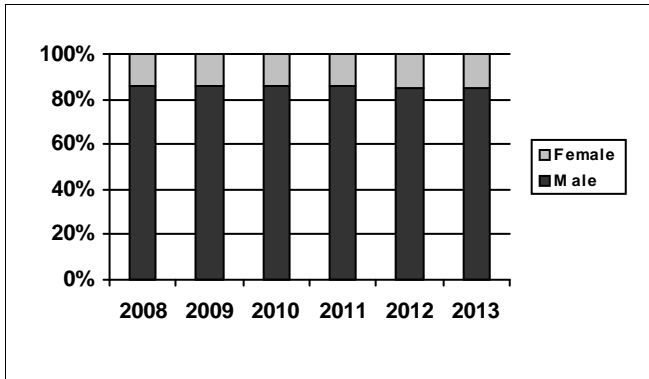
The population of juvenile halls is divided nearly equally between pre- and post-dispositional youth. The percentage of youth in custody pre-disposition has decreased 10% from a high of 61% in 2007.

Summary of Pre-Disposition in Juvenile Halls				
2008	2009	2010	2011	2012
57%	56%	53%	51%	52%

2013 Summary of Pre-Disposition Juvenile Halls			
Q1	Q2		Average
51%	51%		51%

Second Quarter Report, 2013 - Juvenile Hall Data

Gender Distribution in Juvenile Halls



There has been no change in gender distribution.

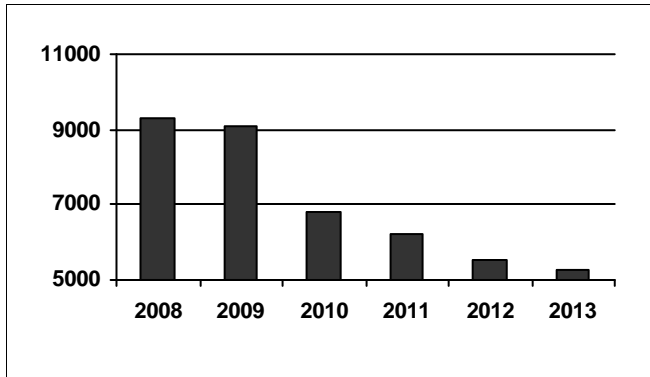
Summary of Males in Juvenile Halls

2008	2009	2010	2011	2012
86%	86%	86%	86%	85%

2013 Summary of Males in Juvenile Hall

Q1	Q2	Average
85%	85%	85%

Average Number of Juveniles Booked per Month



The increase in bookings in the second quarter is also an occurrence that has been noted in that same quarter since 2002. Past population patterns suggest that the number of bookings will decrease in the third quarter. Anecdotally, facility managers tell BSCC that this second quarter increase in bookings is likely related to the change to daylight savings time and spring break.

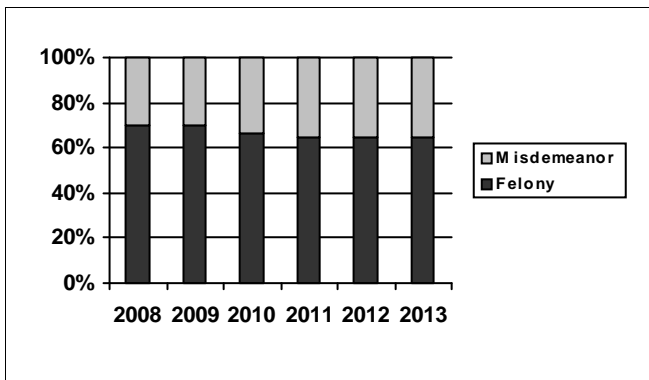
Summary of Juveniles Booked per Month

2008	2009	2010	2011	2012
9,325	9,079	6,802	6,202	5,556

2013 Summary of Monthly Bookings

Q1	Q2	Average
5,205	5,287	5,246

Distribution of Charge in Juvenile Halls



The number of youth in juvenile halls with felony charges has changed little since 2010. The percentage of felony charges was at its highest from 2007-2009 when it was 70%.

Summary of Felony Charges in Juvenile Halls

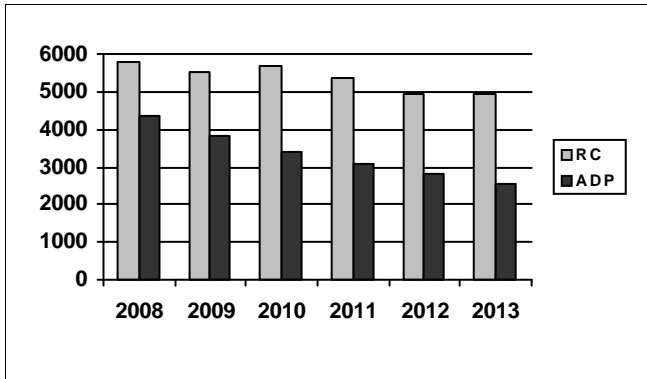
2008	2009	2010	2011	2012
70%	70%	66%	65%	65%

2013 Summary of Felony Charge Juvenile Hall

Q1	Q2	Average
64%	65%	65%

Second Quarter Report, 2013 - Camp Data

RC and ADP for Camps

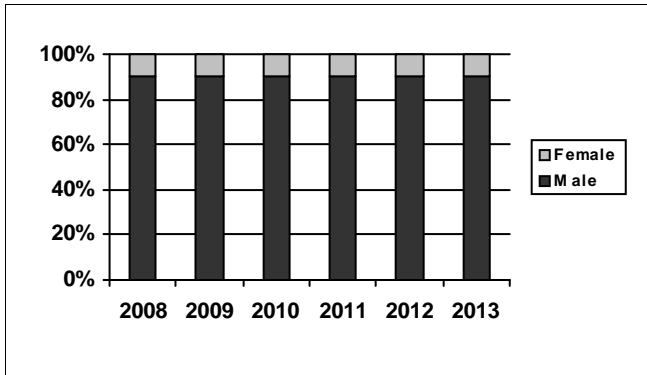


The ADP of juvenile camps increased slightly over the previous quarter. This is an increase that has been noted historically during the second quarter of a given year. Based on previous year's data, we can expect the ADP to decline in the third quarter and for the annual camp ADP to be less than in 2012.

Summary of Camp ADP				
2008	2009	2010	2011	2012
4,338	3,841	3,374	3,105	2,811

2013 Summary of Camp ADP			
Q1	Q2		Average
2,534	2,596		2,565

Gender Distribution in Camps

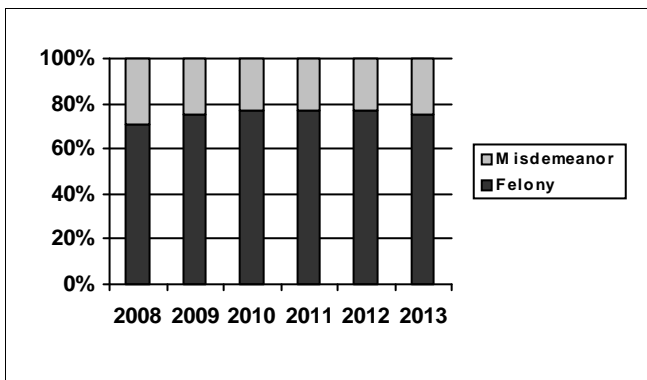


Girls continue to make up only 10% of camp populations as compared to 15% of juvenile hall population. The majority of probation camps are for male residents only. There are more co-educational camp/commitment programs than there are facilities for girls only.

Summary of Males in Camps				
2008	2009	2010	2011	2012
90%	90%	90%	90%	90%

2013 Summary of Males in Camps			
Q1	Q2		Average
91%	90%		90%

Distribution of Charge in Camps



After making up a high of 77% of the camp population in 2010, 2011, and 2012, felony offenders made up 74% of the youth in camp during the second quarter of 2013.

Summary of Felonies in Camps				
2008	2009	2010	2011	2012
71%	75%	77%	77%	77%

2013 Summary of Felonies in Camps			
Q1	Q2		Average
76%	74%		75%

INSTRUCTIONS FOR INTERPRETING THE SURVEY REPORT

The **Overall Capacity, Population and ADP page** is designed to present the JDPS results for the major reporting categories.

- **Capacity:** this category presents the RC in terms of the number of beds in juvenile halls and camps/ranches that meet the BSCC standards.
- **High One Day:** for each month in the quarter, each jurisdiction reports the juvenile hall and camp/ranch populations that together constituted the highest one-day count of the month.
- **Other:** this category refers to the sum of all juveniles who are receiving custody credit while on home supervision with or without electronic monitoring, or in alternative confinement programs.

The **County Breakout Report page** is designed to present county-specific information.

- **County comparison:** this page identifies the ADP for each county and the percent that county contributes to the total state juvenile detention population. The counties are ranked in descending order based on their percentage of the overall juvenile detention population in the state.

The **JDPS additional information page** is designed to present all the remaining JDPS results not already listed.

- **One Day Snapshot:** the percentages in this section are percentages of the total ADP for juvenile halls, camps/ranches, and other juveniles in the system.
- **Average number of days that one or more facilities in a county exceeded the RC:** this value is the result of taking all of the counties “number of days of crowding” and averaging the figures submitted by all the jurisdictions. If a jurisdiction had no crowding days, that jurisdiction was not included in the computation. In other words, the value presented indicates the typical number of crowding days per month experienced by jurisdictions that have had one or more days of crowding in the Second Quarter of Calendar Year 2013.
- **Average Length of Stay:** these numbers are averages for all juveniles in each category:
 - 1) “Juvenile Hall (all releases)” is computed by first taking the mean length of stay for all juveniles released from juvenile halls in a jurisdiction. Next, all the jurisdictions’ means are averaged to produce a statewide figure;
 - 2) “Juvenile Hall to Camps [ranches]” is computed in the same fashion, but includes only those juveniles released from juvenile hall and placed in a camp or ranch;
 - 3) “Juvenile Hall to other out-of-home placements” presents the average length of stay for that subset of juveniles.