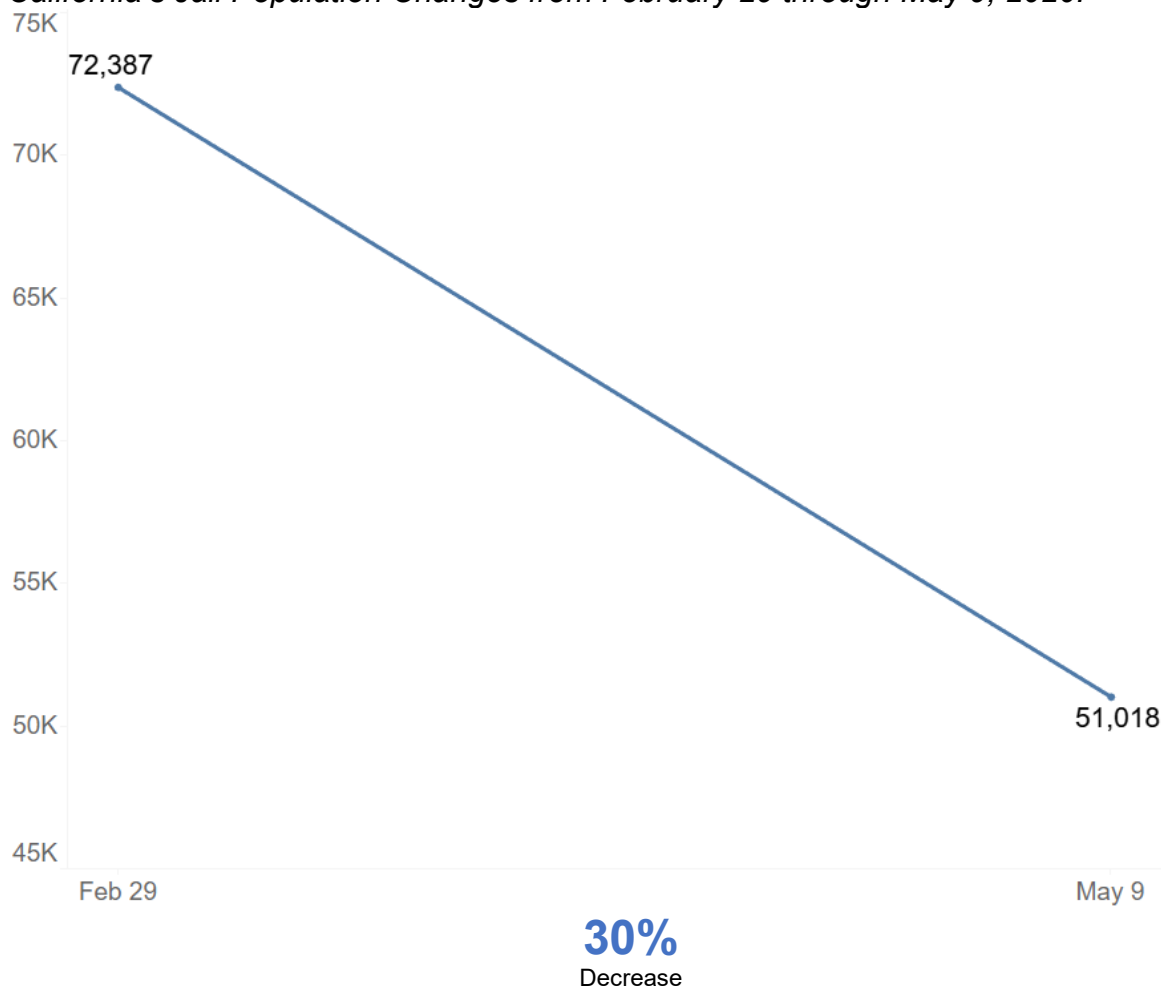


County Jail Populations During COVID-19

May 18, 2020

During the COVID-19 emergency, California has experienced a reduction in county jail populations. California's jail population on February 29, 2020 was estimated to be 72,387.¹ The jail population for May 9, 2020 was 51,018.² This represents a 30 percent reduction in the jail population in 10 weeks.

California's Jail Population Changes from February 29 through May 9, 2020.



¹ February Jail Profile Survey (JPS) reports were used to estimate baseline data for the average daily population (ADP) for the week of February 23, 2020. The February ADP was used as the week's estimate.

² Supplemental JPS reports for the week of May 9, 2020 were used for the May 9, 2020 ADP estimate. Supplemental JPS data are collected weekly. May 9, 2020 data reflected the ADP for the week of May 3 – 9, 2020.

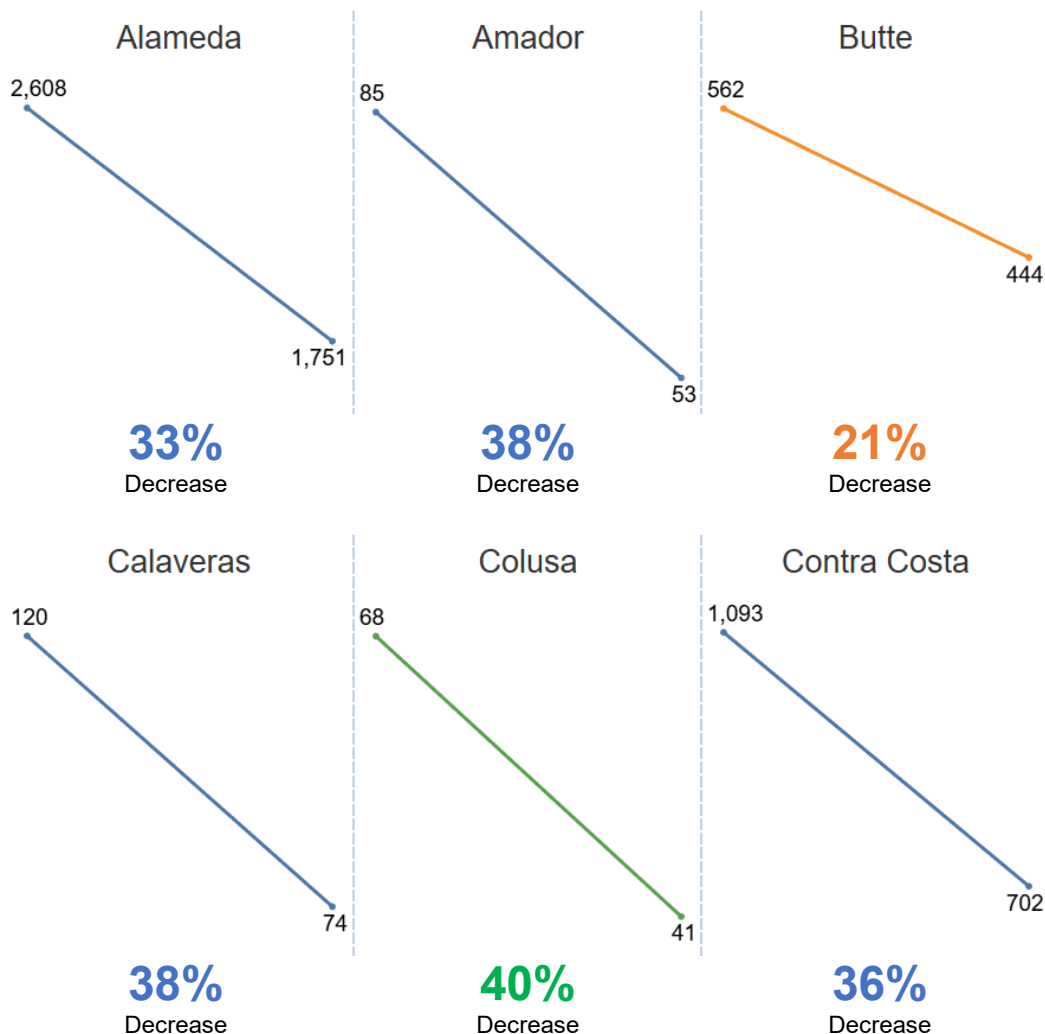
County Jail Populations During COVID-19

May 18, 2020

The decrease has varied across counties. The figures that follow provide each county's average daily population (ADP) for February 29, 2020 and May 9, 2020 with the percent change between the two dates below the figure. Percent change values were classified and color-coded into the following categories:

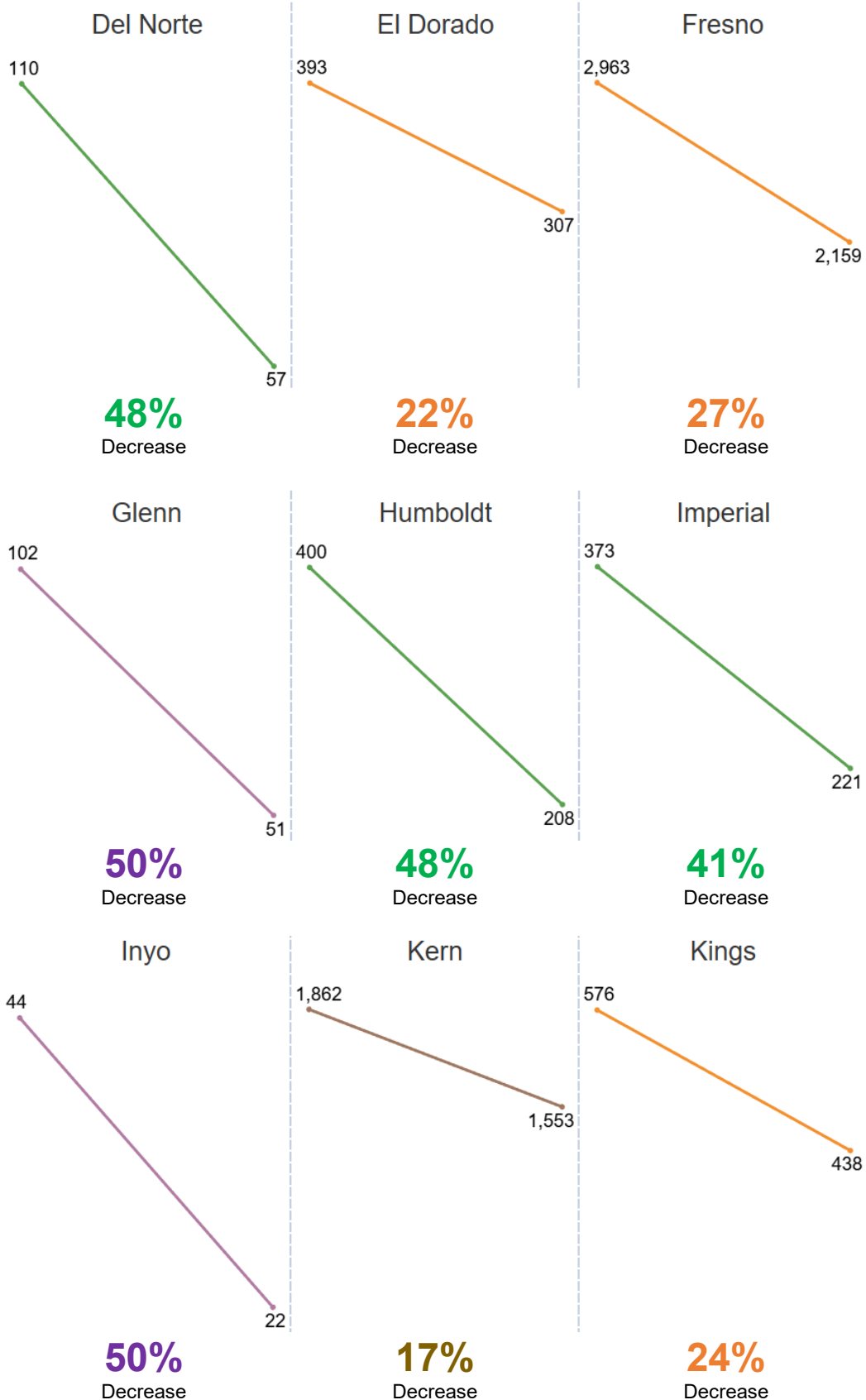
- Decrease between 10% through 19%
- Decrease between 20% through 29%
- Decrease between 30% through 39%
- Decrease between 40% through 49%
- Decrease of 50% or greater

Diverse patterns among counties reflect not only differences in policy approaches, but other county-specific factors. The BSCC does not collect details on county policies that may influence these data and cautions against inferences about the comparative performance of counties.



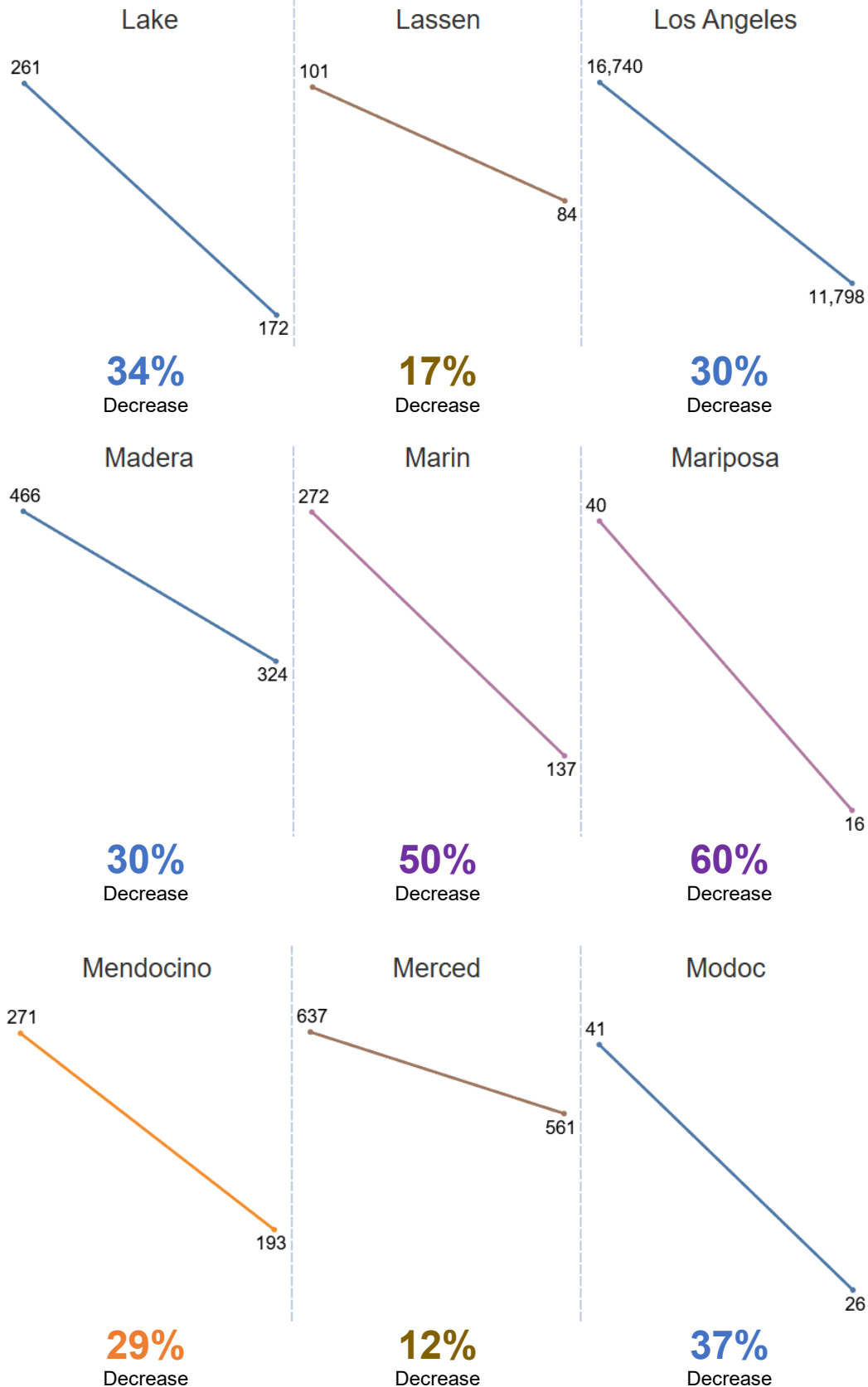
County Jail Populations During COVID-19

May 18, 2020



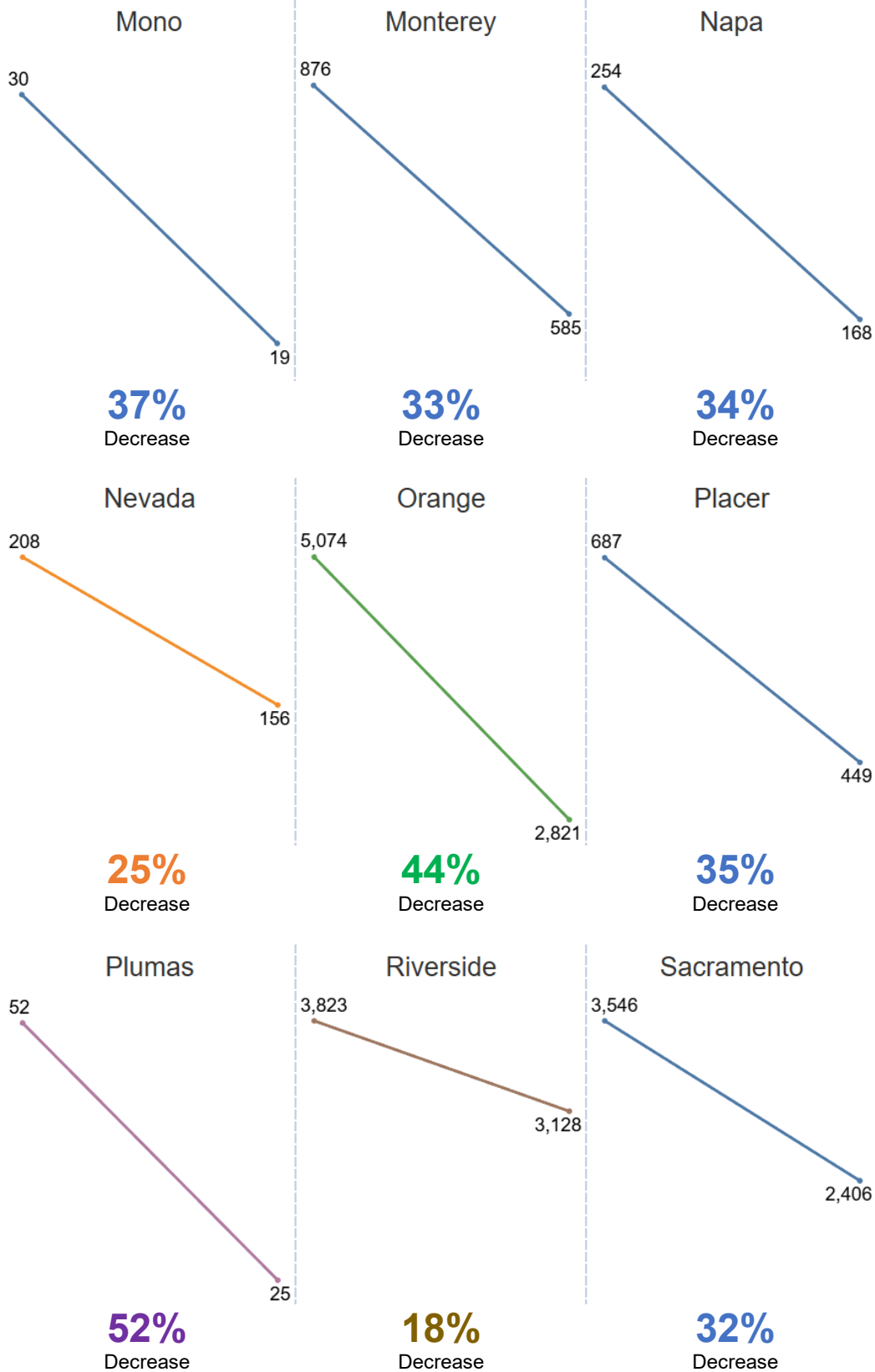
County Jail Populations During COVID-19

May 18, 2020



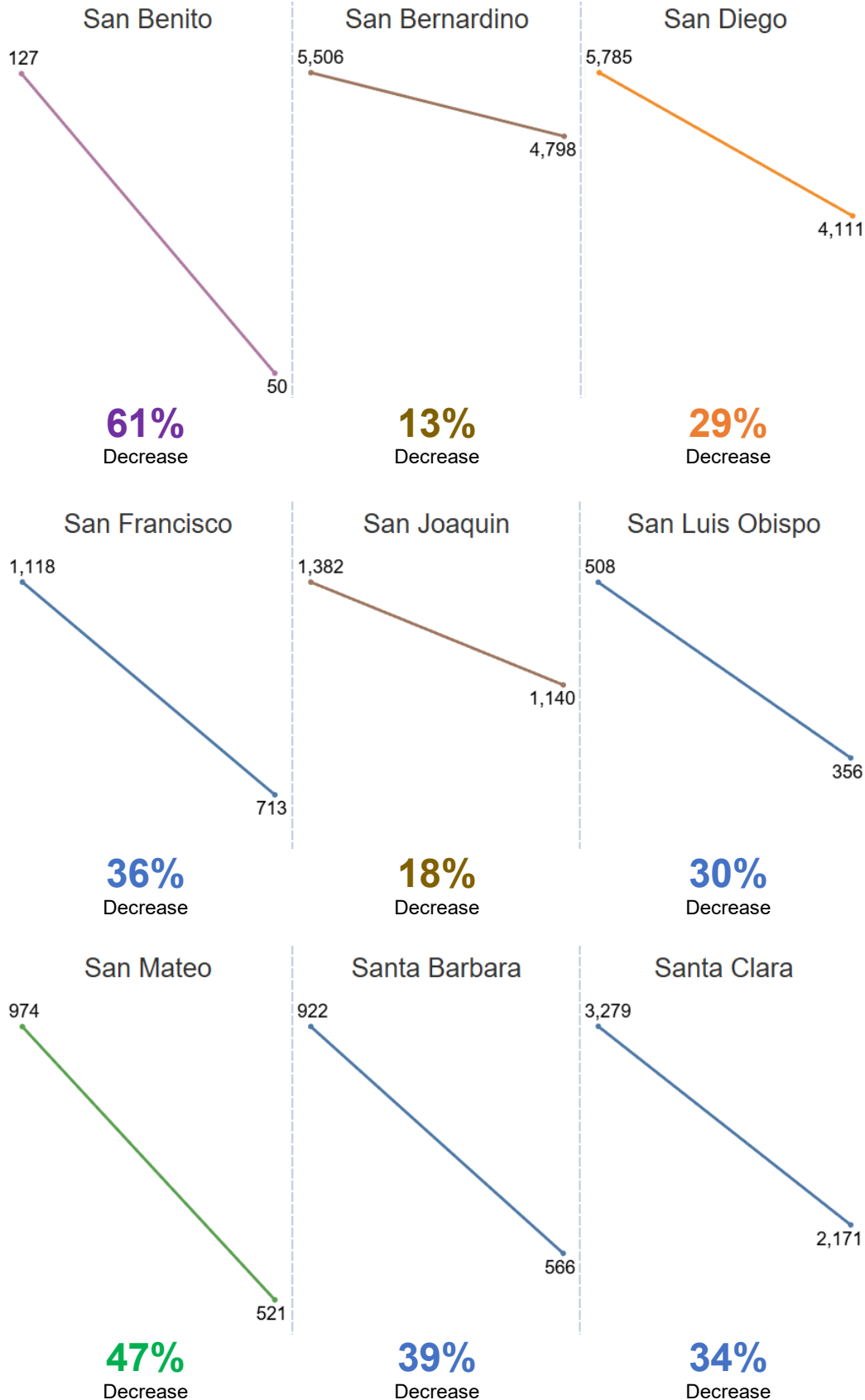
County Jail Populations During COVID-19

May 18, 2020



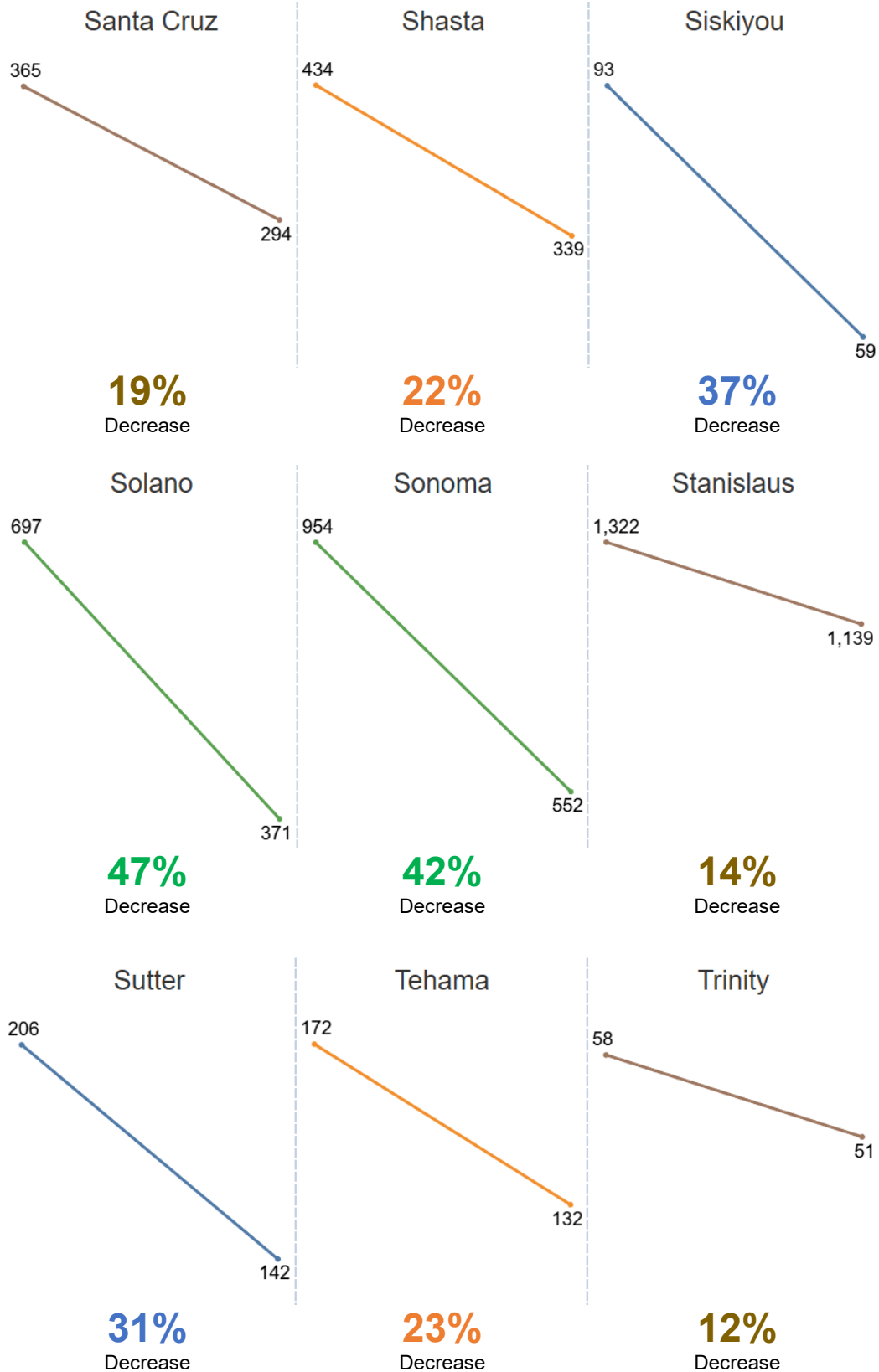
County Jail Populations During COVID-19

May 18, 2020



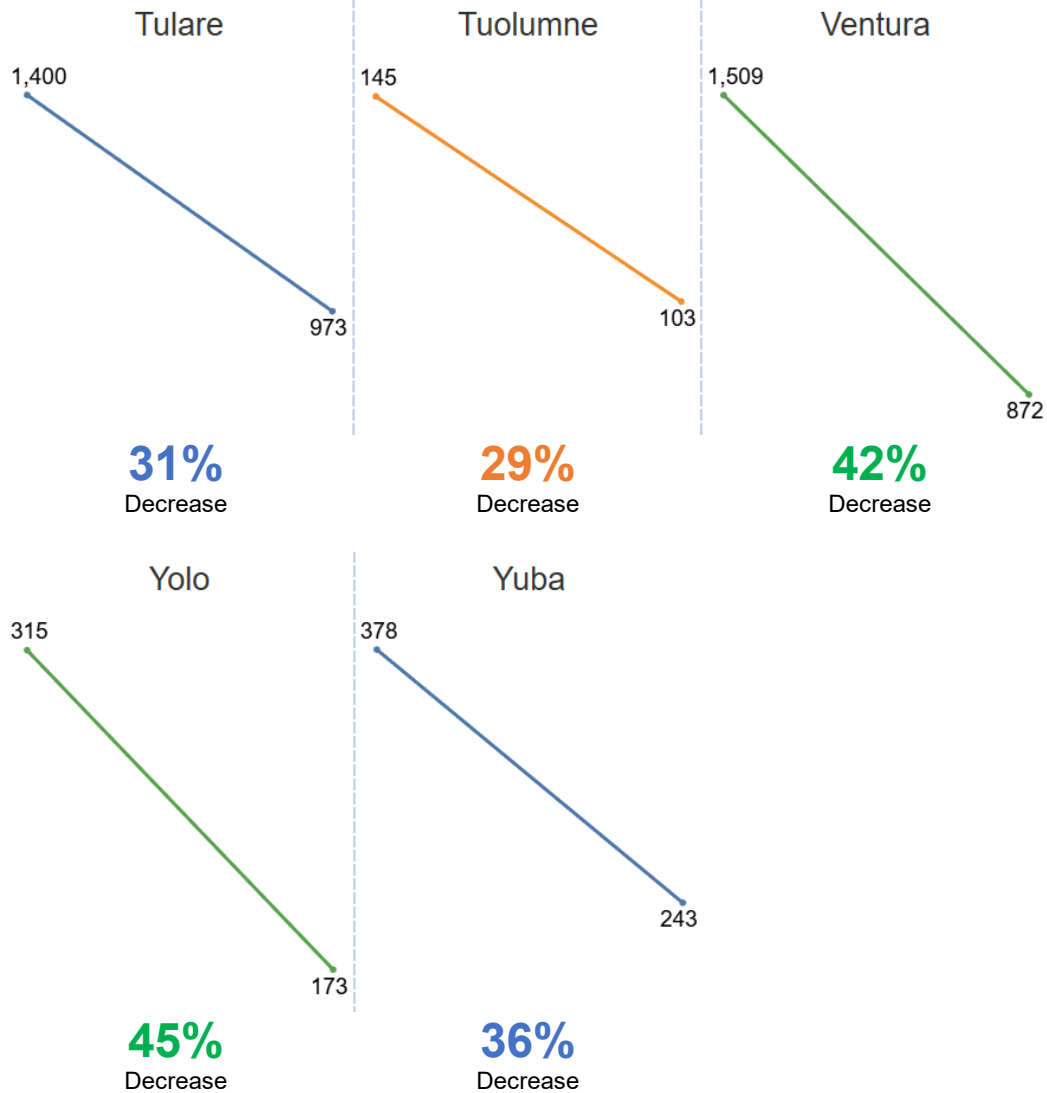
County Jail Populations During COVID-19

May 18, 2020



County Jail Populations During COVID-19

May 18, 2020



County Jail Populations During COVID-19

May 18, 2020

Table 1. County Jail Population Changes between February 29 and May 9, 2020

County	Average Daily Population		Percent Change
	Feb. 29, 2020	May 9, 2020	
Alameda Sheriff's Dept.	2,608	1,751	-33%
Amador Sheriff's Dept.	85	53	-38%
Butte Sheriff's Dept.	562	444	-21%
Calaveras Sheriff's Dept.	120	74	-38%
Colusa Sheriff's Dept.	68	41	-40%
Contra Costa Sheriff's Dept.	1,093	702	-36%
Del Norte Sheriff's Dept.	110	57	-48%
El Dorado Sheriff's Dept.	393	307	-22%
Fresno Sheriff's Dept.	2,963	2,159	-27%
Glenn Sheriff's Dept.	102	51	-50%
Humboldt Sheriff's Dept.	400	208	-48%
Imperial Sheriff's Dept.	373	221	-41%
Inyo Sheriff's Dept.	44	22	-50%
Kern Sheriff's Dept.	1,862	1,553	-17%
Kings Sheriff's Dept.	576	438	-24%
Lake Sheriff's Dept.	261	172	-34%
Lassen Sheriff's Dept.	101	84	-17%
Los Angeles Sheriff's Dept.	16,740	11,798	-30%
Madera Corrections Dept.	466	324	-30%
Marin Sheriff's Dept.	272	137	-50%
Mariposa Sheriff's Dept.	40	16	-60%
Mendocino Sheriff's Dept.	271	193	-29%
Merced Sheriff's Dept.	637	561	-12%
Modoc Sheriff's Dept.	41	26	-37%
Mono Sheriff's Dept.	30	19	-37%
Monterey Sheriff's Dept.	876	585	-33%
Napa Corrections Dept.	254	168	-34%
Nevada Sheriff's Dept.	208	156	-25%
Orange Sheriff's Dept.	5,074	2,821	-44%
Placer Sheriff's Dept.	687	449	-35%
Plumas Sheriff's Dept.	52	25	-52%
Riverside Sheriff's Dept.	3,823	3,128	-18%

County Jail Populations During COVID-19

May 18, 2020

County	Average Daily Population		Percent Change
	Feb. 29, 2020	May 9, 2020	
Sacramento Sheriff's Dept.	3,546	2,406	-32%
San Benito Sheriff's Dept.	127	50	-61%
San Bernardino Sheriff's Dept.	5,506	4,798	-13%
San Diego Sheriff's Dept.	5,785	4,111	-29%
San Francisco Sheriff's Dept.	1,118	713	-36%
San Joaquin Sheriff's Dept.	1,382	1,140	-18%
San Luis Obispo Sheriff's Dept.	508	356	-30%
San Mateo Sheriff's Dept.	974	521	-47%
Santa Barbara Sheriff's Dept.	922	566	-39%
Santa Clara Corrections Dept.	3,279	2,171	-34%
Santa Cruz Sheriff's Dept.	365	294	-19%
Shasta Sheriff's Dept.	434	339	-22%
Siskiyou Sheriff's Dept.	93	59	-37%
Solano Sheriff's Dept.	697	371	-47%
Sonoma Sheriff's Dept.	954	552	-42%
Stanislaus Sheriff's Dept.	1,322	1,139	-14%
Sutter Sheriff's Dept.	206	142	-31%
Tehama Sheriff's Dept.	172	132	-23%
Trinity Sheriff's Dept.	58	51	-12%
Tulare Sheriff's Dept.	1,400	973	-31%
Tuolumne Sheriff's Dept.	145	103	-29%
Ventura Sheriff's Dept.	1,509	872	-42%
Yolo Sheriff's Dept.	315	173	-45%
Yuba Sheriff's Dept.	378	243	-36%
Statewide	72,387	51,018	-30%