

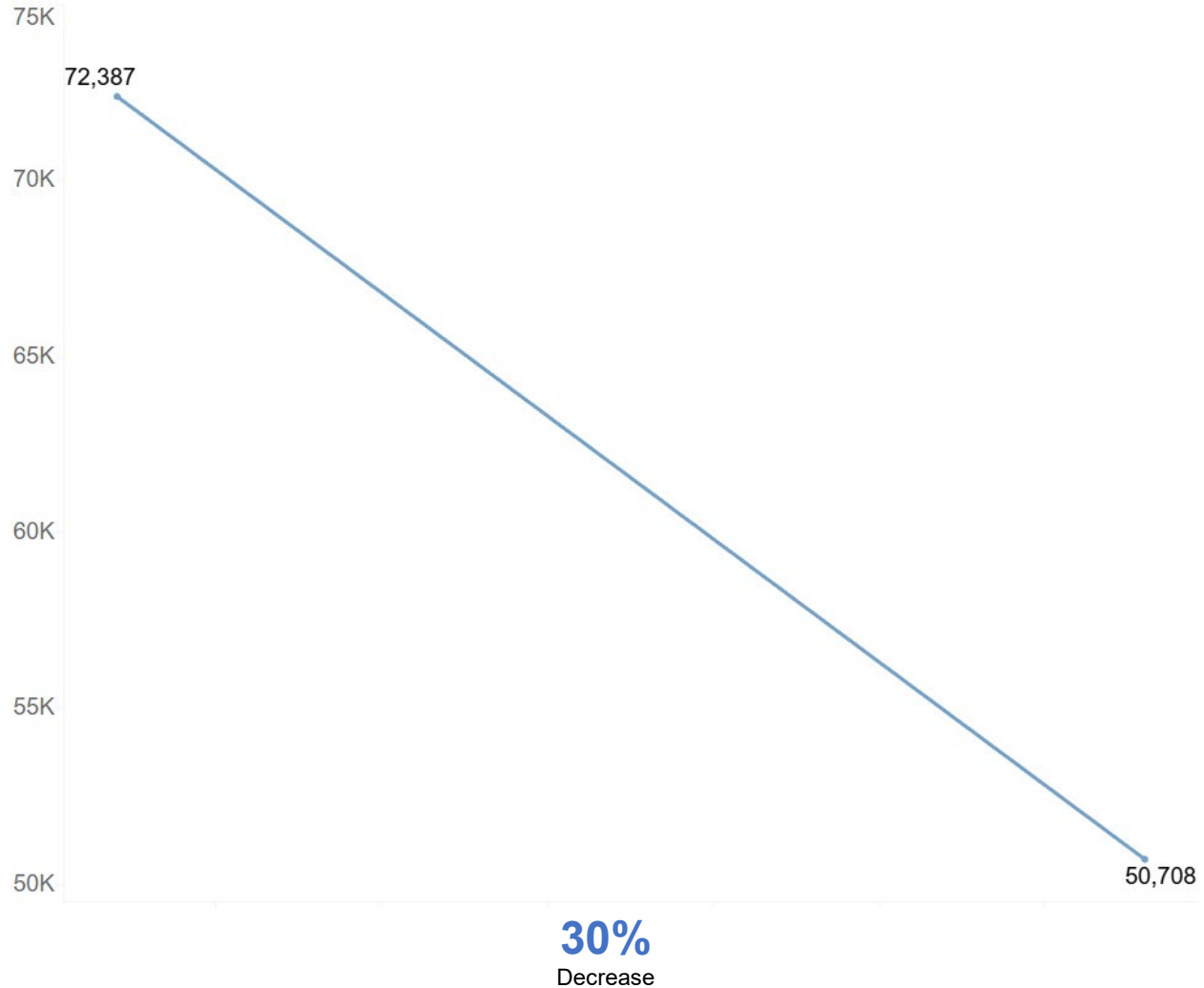


County Jail Populations During COVID-19

May 29, 2020

During the COVID-19 emergency, California has experienced a reduction in county jail populations. California’s jail population on February 29, 2020 was estimated to be 72,387.¹ The jail population for May 23, 2020 was 50,708.² This represents a 30 percent reduction in the jail population in the 12 week period.

California’s Jail Population Changes from February 29 through May 23, 2020.



¹ February Jail Profile Survey (JPS) reports were used to estimate baseline data for the average daily population (ADP) for the week of February 23, 2020. The February ADP was used as the week’s estimate.

² Supplemental JPS reports for the week of May 23, 2020 were used for the May 23, 2020 ADP estimate. Supplemental JPS data are collected weekly. May 23, 2020 data reflected the ADP for the week of May 17 – 23, 2020. Some counties have yet to report for May 23, 2020 and the most recent Supplemental JPS report prior is used; please see Table 1 for details.

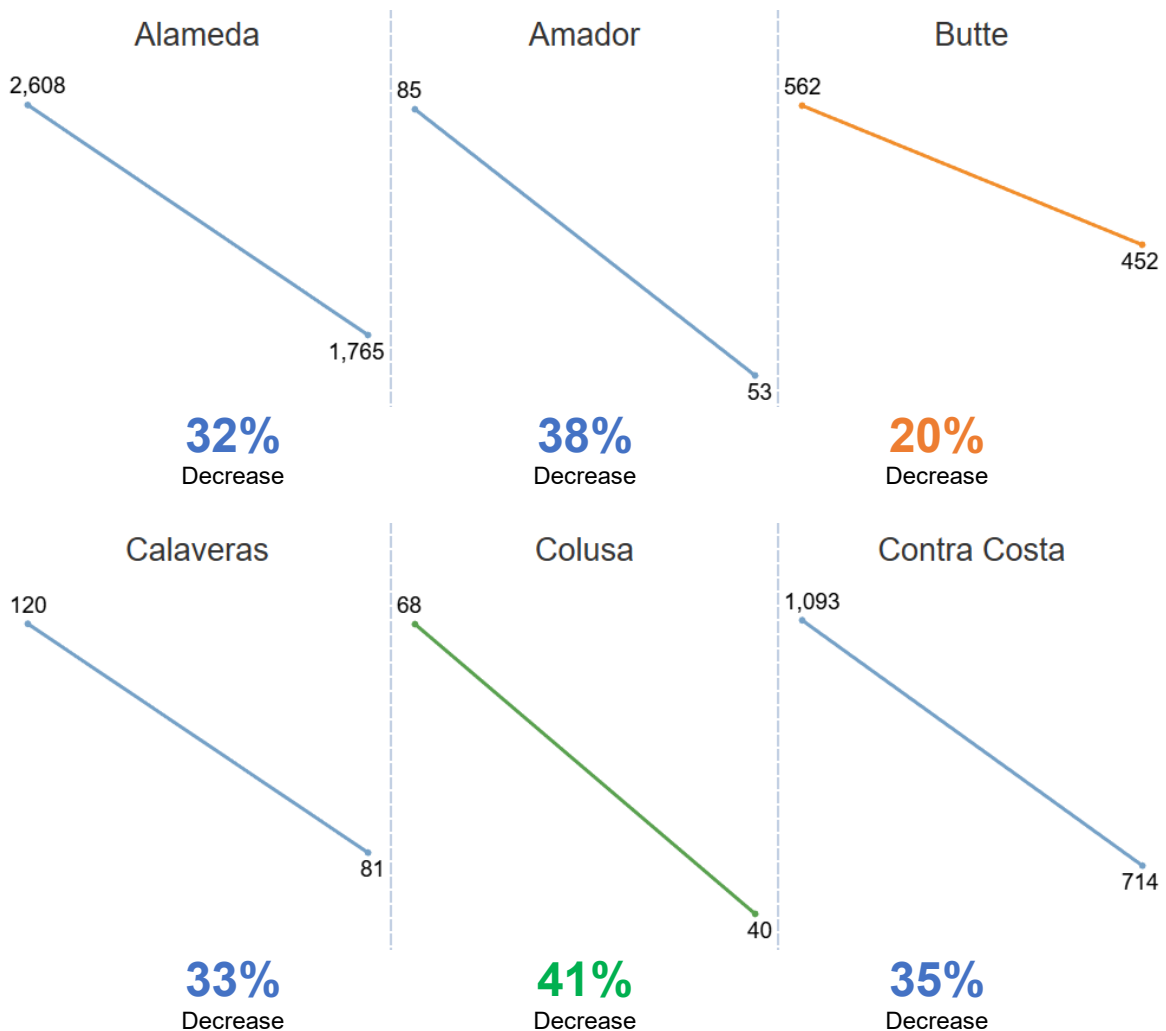
County Jail Populations During COVID-19

May 29, 2020

These decreases have varied across counties. The figures that follow provide each county's average daily population (ADP) for February 29, 2020 and May 23, 2020 with the percent change between the two dates below the figure. Percent change values were classified and color-coded into the following categories:

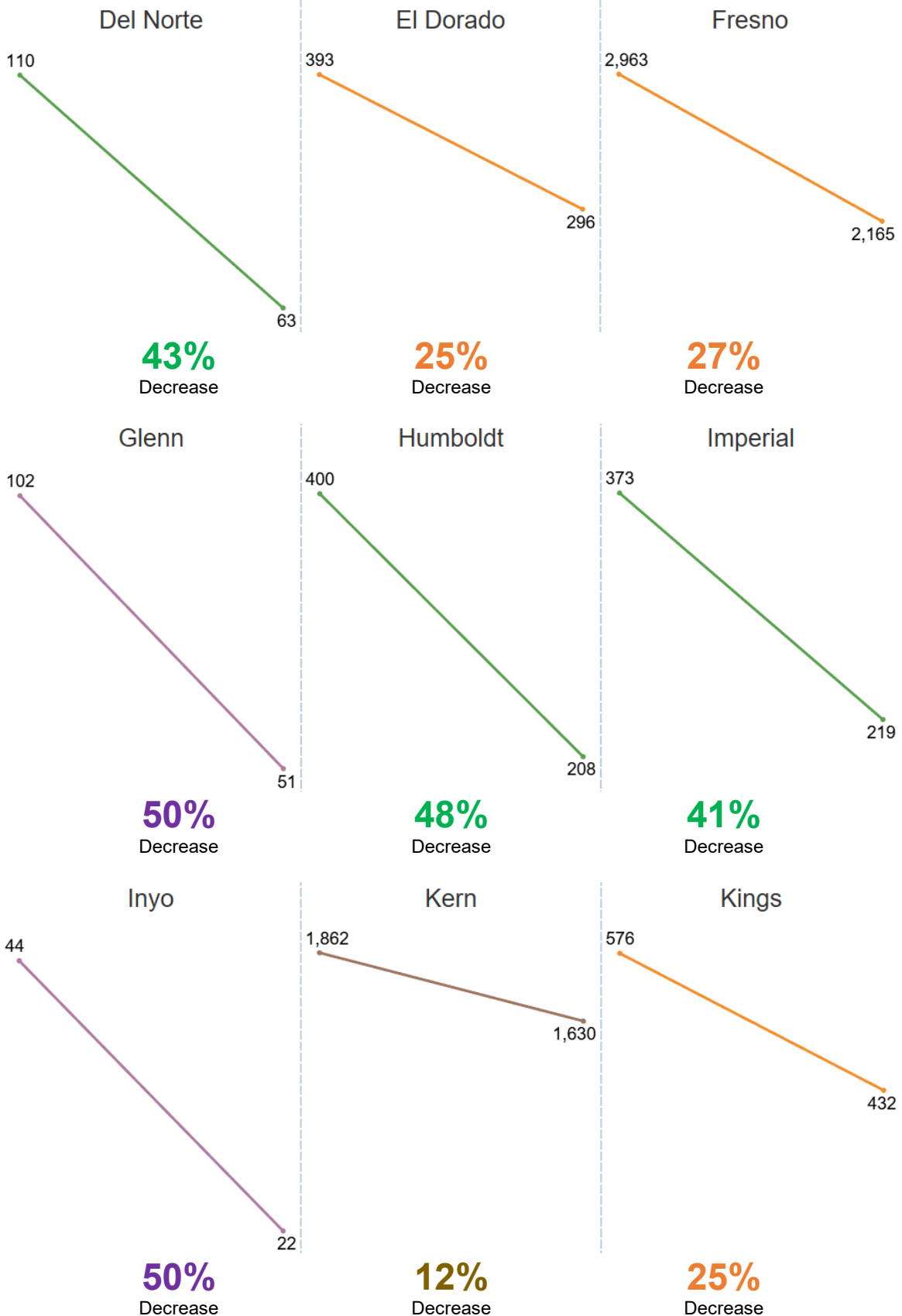
- Decrease between 10% through 19%
- Decrease between 20% through 29%
- Decrease between 30% through 39%
- Decrease between 40% through 49%
- Decrease of 50% or greater

Diverse patterns among counties reflect not only differences in policy approaches, but other county-specific factors. The BSCC does not collect details on county policies that may influence these data and cautions against inferences about the comparative performance of counties.



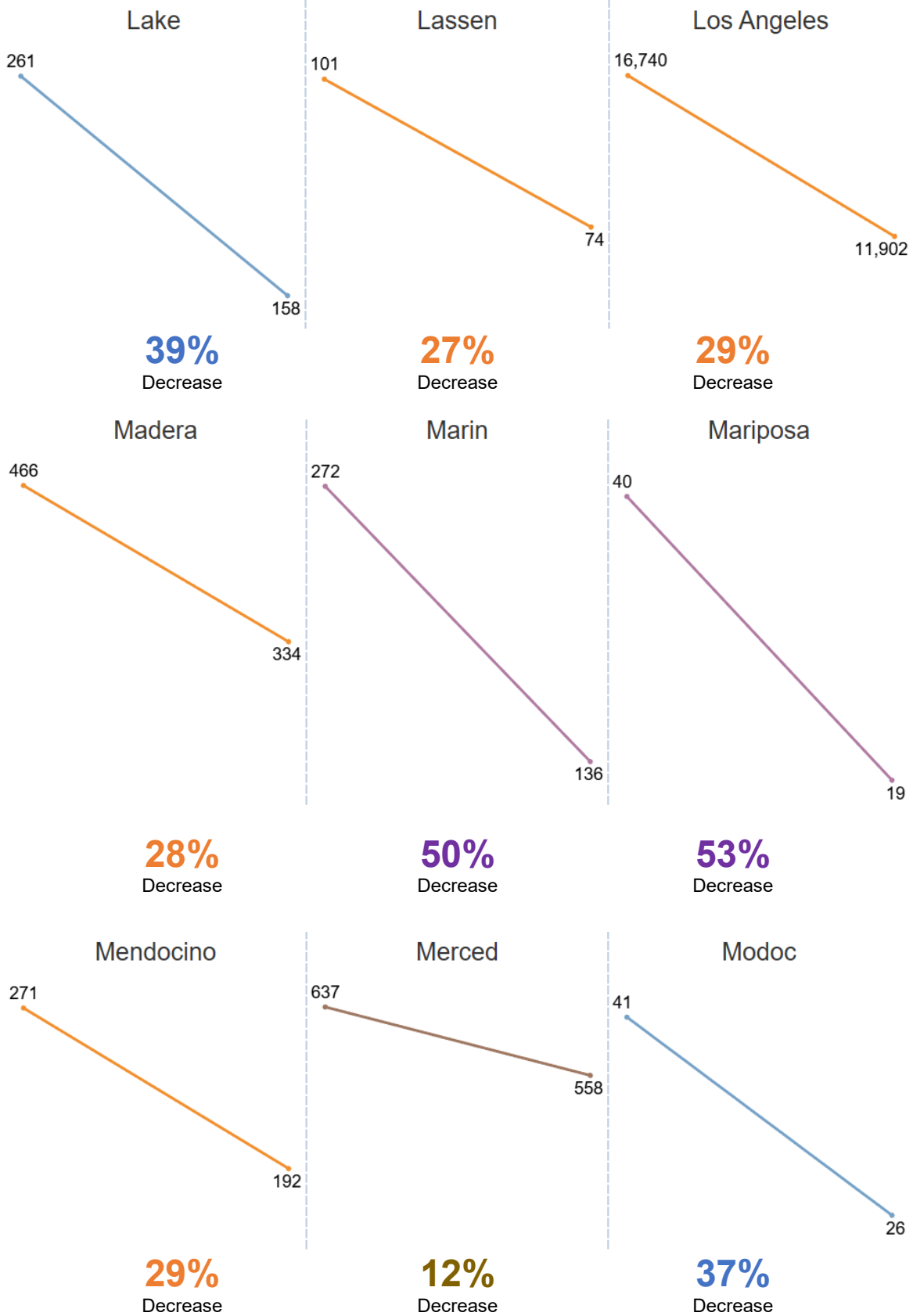
County Jail Populations During COVID-19

May 29, 2020



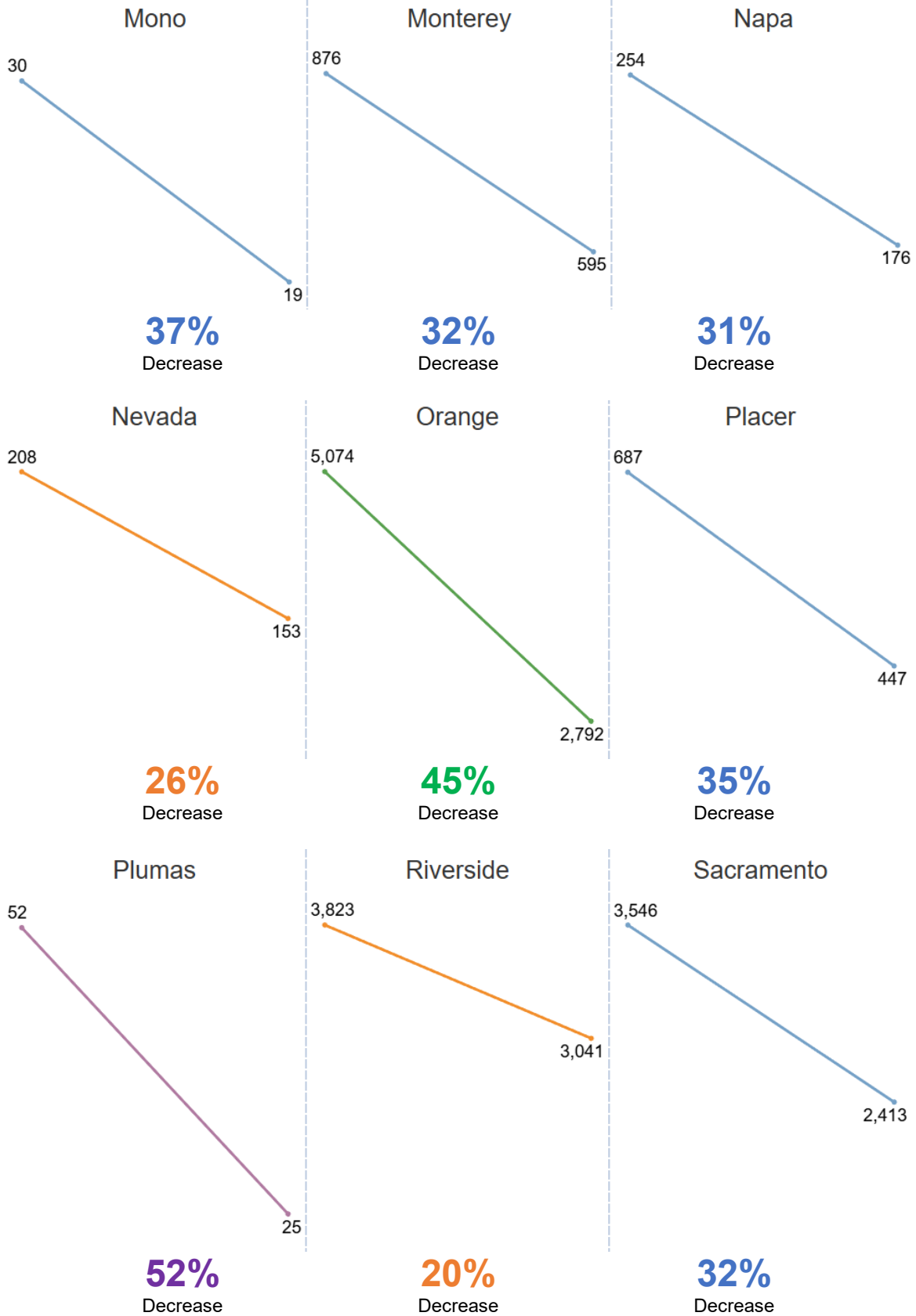
County Jail Populations During COVID-19

May 29, 2020



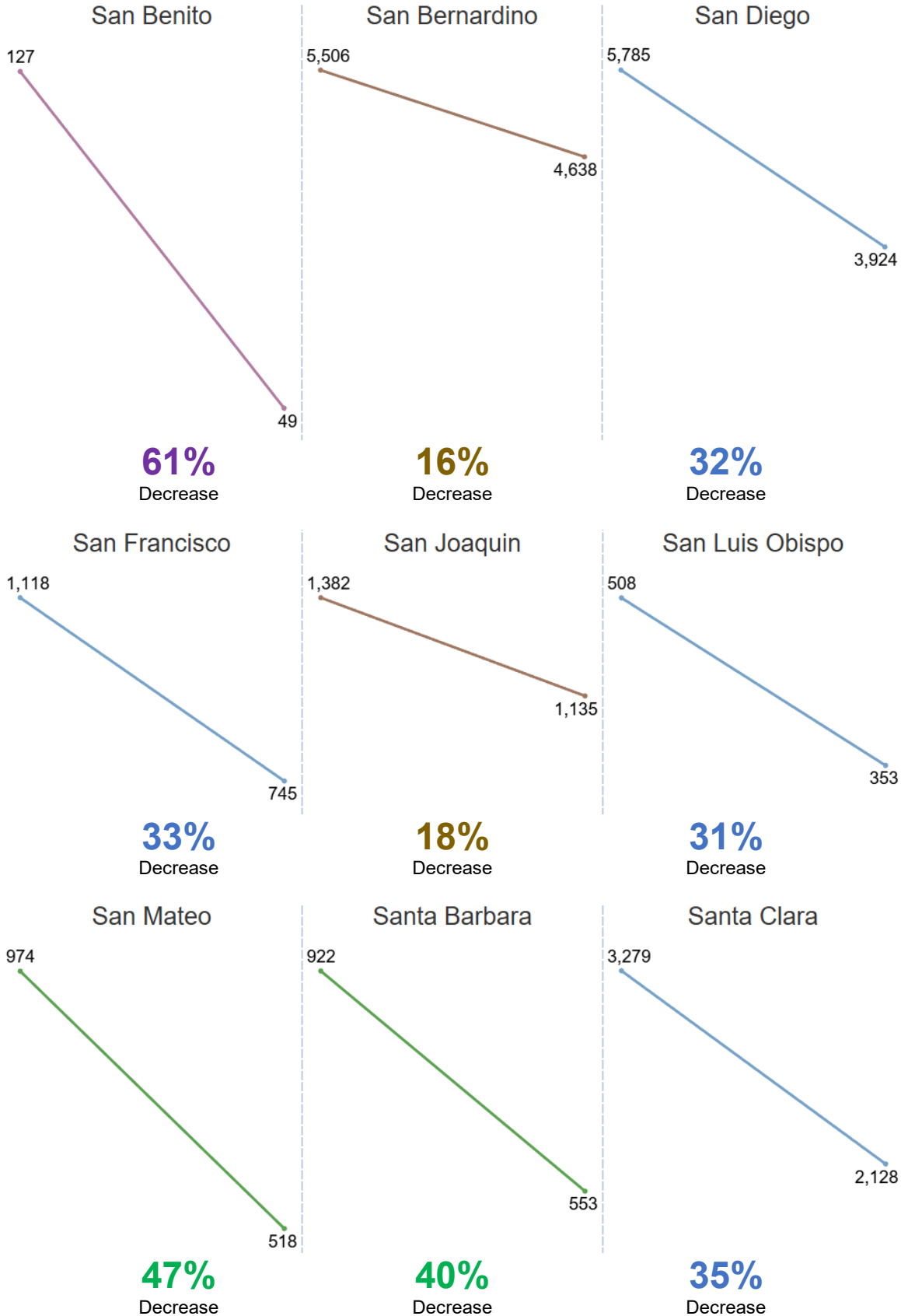
County Jail Populations During COVID-19

May 29, 2020



County Jail Populations During COVID-19

May 29, 2020



County Jail Populations During COVID-19

May 29, 2020



County Jail Populations During COVID-19

May 29, 2020



County Jail Populations During COVID-19

May 29, 2020

Table 1. County Jail Population Changes between February 29 and May 23, 2020

County	Average Daily Population		Percent Change
	Feb. 29, 2020	May 23, 2020	
Alameda Sheriff's Dept.	2,608	1,765	-32%
Amador Sheriff's Dept. ¹	85	53	-38%
Butte Sheriff's Dept.	562	452	-20%
Calaveras Sheriff's Dept.	120	81	-33%
Colusa Sheriff's Dept.	68	40	-41%
Contra Costa Sheriff's Dept.	1,093	714	-35%
Del Norte Sheriff's Dept.	110	63	-43%
El Dorado Sheriff's Dept.	393	296	-25%
Fresno Sheriff's Dept.	2,963	2,165	-27%
Glenn Sheriff's Dept.	102	51	-50%
Humboldt Sheriff's Dept. ²	400	208	-48%
Imperial Sheriff's Dept.	373	219	-41%
Inyo Sheriff's Dept. ³	44	22	-50%
Kern Sheriff's Dept.	1,862	1,630	-12%
Kings Sheriff's Dept.	576	432	-25%
Lake Sheriff's Dept.	261	158	-39%
Lassen Sheriff's Dept.	101	74	-27%
Los Angeles Sheriff's Dept.	16,740	11,902	-29%
Madera Corrections Dept.	466	334	-28%
Marin Sheriff's Dept.	272	136	-50%
Mariposa Sheriff's Dept.	40	19	-53%
Mendocino Sheriff's Dept.	271	192	-29%
Merced Sheriff's Dept.	637	554	-12%
Modoc Sheriff's Dept.	41	26	-37%
Mono Sheriff's Dept.	30	19	-37%
Monterey Sheriff's Dept.	876	595	-32%
Napa Corrections Dept.	254	176	-31%
Nevada Sheriff's Dept.	208	153	-26%
Orange Sheriff's Dept.	5,074	2,792	-45%
Placer Sheriff's Dept.	687	447	-35%
Plumas Sheriff's Dept.	52	25	-52%
Riverside Sheriff's Dept.	3,823	3,041	-20%

County Jail Populations During COVID-19

May 29, 2020

County	Average Daily Population		Percent Change
	Feb. 29, 2020	May 23, 2020	
Sacramento Sheriff's Dept.	3,546	2,413	-32%
San Benito Sheriff's Dept.	127	49	-61%
San Bernardino Sheriff's Dept.	5,506	4,638	-16%
San Diego Sheriff's Dept.	5,785	3,924	-32%
San Francisco Sheriff's Dept.	1,118	745	-33%
San Joaquin Sheriff's Dept.	1,382	1,135	-18%
San Luis Obispo Sheriff's Dept.	508	353	-31%
San Mateo Sheriff's Dept.	974	518	-47%
Santa Barbara Sheriff's Dept.	922	553	-40%
Santa Clara Sheriff's Dept.	3,279	2,128	-35%
Santa Cruz Sheriff's Dept.	365	291	-20%
Shasta Sheriff's Dept.	434	379	-13%
Siskiyou Sheriff's Dept.	93	65	-30%
Solano Sheriff's Dept.	697	387	-44%
Sonoma Sheriff's Dept.	954	532	-44%
Stanislaus Sheriff's Dept.	1,322	1,122	-15%
Sutter Sheriff's Dept.	206	134	-35%
Tehama Sheriff's Dept.	172	120	-30%
Trinity Sheriff's Dept.	58	52	-10%
Tulare Sheriff's Dept.	1,400	1,001	-29%
Tuolumne Sheriff's Dept.	145	104	-28%
Ventura Sheriff's Dept.	1,509	828	-45%
Yolo Sheriff's Dept.	315	189	-40%
Yuba Sheriff's Dept.	378	210	-44%
Statewide	72,387	50,708	-30%

Notes: ¹ Amador Sheriff's Dept. data are up to May 9, 2020 only. ² Humboldt Sheriff's Dept. data are up to May 16, 2020 only. ³ Inyo Sheriff's Dept. data are up to May 9, 2020 only.