

# **JAIL PROFILE SURVEY**

## **2005, 2nd QUARTER SURVEY RESULTS**

**FACILITIES STANDARDS AND OPERATIONS DIVISION**

**BOARD OF CORRECTIONS**

STATE OF CALIFORNIA  
600 Bercut Drive  
Sacramento, CA 95814-0185  
(916) 445-5073  
[www.bdcorr.ca.gov](http://www.bdcorr.ca.gov)

# JAIL PROFILE SURVEY

## EXPLANATION OF RESULTS

The following pages contain the Jail Profile Survey results for the second quarter of 2005. Page 1 contains the quarterly totals based upon the monthly and quarterly data submitted to us by the participating jurisdictions. Pages 2 and 3 show the trend data for variables we have been tracking for the last ten years. The remainder of this page provides explanations and clarifications of the data presented.

### Page 1

- Unless otherwise noted, “projected totals” are based upon the average per day for the variable in question. For example, there was an average of 79,186 inmates per day in local jails (excluding Type I’s) during the three-month span of April to June 2005.
- For some variables (other than ADP), we did not receive complete data from all jurisdictions. In such instances, we used statistical procedures to estimate the statewide total.
- The number for “Bookings” is the average of the monthly totals for April, May, and June.
- For the following variables, the numbers presented are the totals as of the mid-quarter (i.e., May 15, 2005); Pretrial Release, Early Release, 2 and 3 Strikes, Felony Warrants, Misdemeanor Warrants, Juveniles in Custody and Undocumented Aliens.
- Assaults is the total number of serious inmate assaults on staff (resulting in a crime report), statewide, during the second quarter of 2005.

### Pages 2 and 3

- The data in the 10-Year Summary tables are based upon survey data which the Board has gathered since the early 1980’s.
- Prior to 1995, yearly averages were reported to the Board on an annual basis. Yearly averages from 1996 to the present time have been the average of the 12 calendar months. In 1995, the yearly figure reported is the fourth quarter average, since we do not have data from the first three quarters.

# BOARD OF CORRECTIONS JAIL PROFILE SURVEY

**Reporting Period: April to June, 2005**

## County Jail Populations

ADP <sup>a</sup>	79,186 <sup>b</sup>
Holding Areas	2,071
Average "Under the Roof" <sup>c</sup>	81,257 <sup>d</sup>
Highest One Day Count	86,201 <sup>e</sup>

## Special Use Beds

Medical Beds	1,081
Mental Health Beds	3,118

## Released Per Month Due to Lack of Space

Pretrial Release	7,506 <sup>f</sup>
Early Release	12,626 <sup>f</sup>
Total	20,132

## County Jail Populations

Felony	61,557
Misdemeanor	17,629
Total	79,186
Non-Sentenced Males	46,267
Non-Sentenced Females	6,516
Sentenced Males	22,569
Sentenced Females	3,834
Total	79,186
Maximum Security Inmates	24,016
Medium Security Inmates	37,684
Minimum Security Inmates	17,486
Total	79,186

## Inmates with 2 and 3 Strikes

2 Strike Inmates	3,653 <sup>g</sup>
3 Strike Inmates	1,382 <sup>g</sup>
Total	5,035

## Unserviced Warrants

Felony Warrants	283,902 <sup>g</sup>
Misdemeanor Warrants	2,196,793 <sup>g</sup>
Total	2,480,695

## Inmates From Other Jurisdictions

Housed on Federal Contract	4,031
Housed on Contract with CDC	2,708
From Other Counties on Contract	172
Awaiting Transport	1,949
Total	8,860

## Other Jail Profile Survey Variables

Bookings Per Month	109,736 <sup>f</sup>
Juveniles in Custody	57 <sup>f</sup>
Criminal / Illegal Aliens	8,345
Assaults On Staff	299

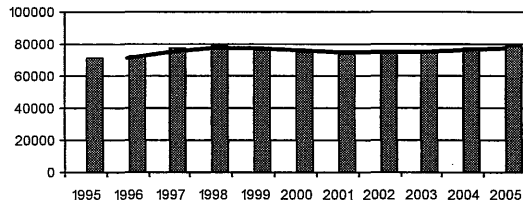
- a. The Average Daily Population for all jurisdictions (excluding Type I's) does not include inmates in holding areas.
- b. Unless otherwise indicated, the numbers reported are the average across the days in the quarter.
- c. "Under the Roof" is the sum of the Average Daily Population plus the average daily number of inmates in Holding Areas.
- d. Totals may not be the exact sum of the subtotals due to rounding.
- e. The sum of all Highest One Day inmate population counts from all jurisdictions.
- f. These data are collected on a monthly basis, this figure is an average of the total numbers collected each month during this quarter.
- g. These data are one-day snapshots collected at the end of the quarter.

# Jail Profile Survey

2005

## Average Daily Population

10 Year Summary									
1995	1996	1997	1998	1999	2000	2001	2002	2003	2004
70,938	72,007	76,938	79,143	76,311	75,044	73,824	75,156	75,340	76,939



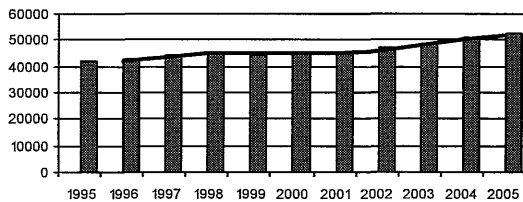
The Average Daily Population (ADP) increased to 79,186 in the Second Quarter of 2005. This continues an uptrend over the past several years.

## Quarterly Results

	Q1	Q2	Q3	Q4	Average
2004	76,030	77,410	77,849	76,463	76,939
2005	77,340	79,186			78,268

## Non-sentenced ADP

10 Year Summary									
1995	1996	1997	1998	1999	2000	2001	2002	2003	2004
42,137	42,539	44,593	45,303	44,509	44,940	45,187	46,975	49,105	50,677



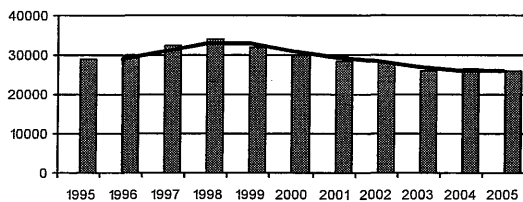
The non-sentenced population increased to 52,783 in the Second Quarter of 2005. This is also a continuation of a multi-year uptrend.

## Quarterly Results

	Q1	Q2	Q3	Q4	Average
2004	49,876	50,176	51,537	51,105	50,677
2005	52,122	52,783			52,455

## Sentenced ADP

10 Year Summary									
1995	1996	1997	1998	1999	2000	2001	2002	2003	2004
28,801	29,468	32,347	33,841	31,802	30,109	28,637	28,180	26,235	26,262



The sentenced population increased to 26,402 in the Second Quarter of 2005 (versus 25,217 in the First Quarter). However, the yearly average continues in a general downtrend pattern over the past several years.

## Quarterly Results

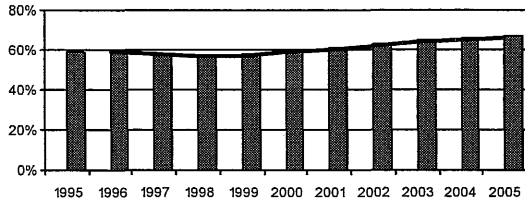
	Q1	Q2	Q3	Q4	Average
2004	26,154	27,233	26,312	25,358	26,262
2005	25,217	26,402			25,813

# Jail Profile Survey

2005

## Percentage Non-sentenced

10 Year Summary									
1995	1996	1997	1998	1999	2000	2001	2002	2003	2004
59%	59%	58%	57%	58%	60%	61%	63%	65%	66%



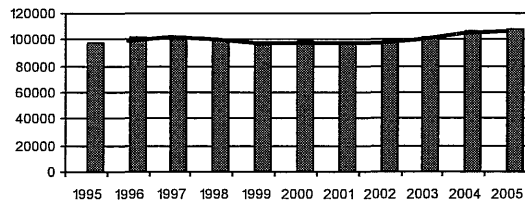
The percentage of non-sentenced inmates remains at 67 percent of ADP. As can be seen in the 10-year summary, the percentage has increased steadily over the past several years.

## Quarterly Results

	Q1	Q2	Q3	Q4	Average
2004	66%	65%	66%	67%	66%
2005	67%	67%			67%

## Average Number of Persons Booked Per Month

10 Year Summary									
1995	1996	1997	1998	1999	2000	2001	2002	2003	2004
97,589	101,767	101,210	99,229	96,684	98,486	97,089	98,625	102,217	106,605



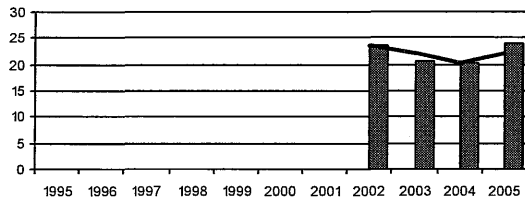
In the Second Quarter of 2005, average monthly bookings increased four percent from the First Quarter (109,736 versus 105,414) and now stands at the highest level in the history of the survey.

## Quarterly Results

	Q1	Q2	Q3	Q4	Average
2004	107,535	106,811	110,064	102,021	106,605
2005	105,414	109,736			107,587

## Average Length Of Stay

10 Year Summary									
1995	1996	1997	1998	1999	2000	2001	2002	2003	2004
							23.6	20.5	20.2



In the Second Quarter of 2005, Average Length of Stay was 23.2 days.

## Quarterly Results

	Q1	Q2	Q3	Q4	Average
2004	20.8	17.6	20.3	22.2	20.2
2005	24.7	23.2			24.0

## Average Daily Population

Non-sentenced / Sentenced Male / Female

California County Jails - For Months Of April - June 2005

Jurisdiction	Non-sentenced						Sentenced						Total
	Male		Female		Total		Male		Female		Total		
	#	%	#	%	#	%	#	%	#	%	#	%	
1. Alameda Sheriff's Dept.	2,737	92%	253	8%	2,990	77%	766	84%	147	16%	913	23%	3,902
2. Amador Sheriff's Dept.	43	82%	10	18%	53	57%	29	74%	10	26%	39	43%	92
3. Butte Sheriff's Dept.	255	85%	44	15%	299	60%	160	80%	39	20%	199	40%	498
4. Calaveras Sheriff's Dept.	42	88%	6	12%	47	62%	26	90%	3	10%	29	38%	77
5. Colusa Sheriff's Dept.	16	83%	3	17%	20	43%	25	95%	1	5%	26	57%	46
6. Contra Costa Sheriff's Dept.	944	88%	134	12%	1,079	65%	536	92%	48	8%	584	35%	1,663
7. Del Norte Sheriff's Dept.	60	87%	9	13%	69	50%	56	81%	13	19%	70	50%	138
8. El Dorado Sheriff's Dept.	135	85%	24	15%	159	47%	146	82%	32	18%	178	53%	336
9. Fresno Sheriff's Dept.	2,118	90%	237	10%	2,355	78%	540	83%	108	17%	647	22%	3,003
10. Glenn Sheriff's Dept.	72	90%	8	10%	80	54%	61	90%	7	10%	68	46%	148
11. Humboldt Sheriff's Dept.	186	86%	30	14%	216	57%	141	88%	20	12%	161	43%	377
12. Imperial Sheriff's Dept.	311	89%	37	11%	348	57%	254	95%	13	5%	267	43%	616
13. Inyo Sheriff's Dept.	33	80%	8	20%	41	48%	37	82%	8	18%	45	52%	86
14. Kern Sheriff's Dept.	1,445	88%	202	12%	1,646	74%	479	81%	114	19%	594	26%	2,240
15. Kings Sheriff's Dept.	124	88%	16	12%	140	48%	124	82%	27	18%	151	52%	291
16. Lake Sheriff's Dept.	99	86%	17	14%	115	44%	114	78%	33	22%	147	56%	263
17. Lassen Sheriff's Dept.	32	82%	7	18%	39	43%	42	80%	10	20%	53	57%	92
18. Los Angeles Sheriff's Dept.	11,293	88%	1,592	12%	12,885	74%	4,074	91%	395	9%	4,468	26%	17,353
19. Madera Corrections Dept.	218	87%	32	13%	251	67%	109	90%	13	10%	121	33%	372
20. Marin Sheriff's Dept.	250	88%	33	12%	283	89%	30	87%	4	13%	35	11%	317
21. Mariposa Sheriff's Dept.	26	82%	6	18%	32	60%	16	75%	5	25%	21	40%	53
22. Mendocino Sheriff's Dept.	166	88%	22	12%	187	67%	72	79%	19	21%	91	33%	278
23. Merced Sheriff's Dept.	393	87%	59	13%	452	64%	228	90%	24	10%	252	36%	705
24. Modoc Sheriff's Dept.	19	90%	2	10%	21	51%	13	68%	6	32%	20	49%	40
25. Mono Sheriff's Dept.	14	89%	2	11%	15	43%	16	78%	4	22%	20	57%	35
26. Monterey Sheriff's Dept.	643	88%	89	12%	732	62%	378	85%	64	15%	442	38%	1,174
27. Napa Corrections Dept.	128	88%	17	12%	145	57%	99	90%	11	10%	110	43%	255
28. Nevada Sheriff's Dept.	86	87%	13	13%	99	55%	65	81%	15	19%	80	45%	180
29. Oakland Police Dept.	86	82%	19	18%	105	100%	0	0%	0	0%	0	0%	105
30. Orange Sheriff's Dept.	2,420	87%	351	13%	2,771	46%	2,817	85%	496	15%	3,313	54%	6,084
31. Placer Sheriff's Dept.	284	88%	40	12%	324	61%	173	83%	35	17%	207	39%	531
32. Plumas Sheriff's Dept.	17	82%	4	18%	21	41%	19	64%	11	36%	30	59%	51
33. Riverside Sheriff's Dept.	2,371	88%	309	12%	2,680	83%	455	85%	79	15%	535	17%	3,215
34. Sacramento Sheriff's Dept.	1,663	88%	231	12%	1,894	53%	1,416	84%	266	16%	1,683	47%	3,576
35. San Benito Sheriff's Dept.	64	88%	9	12%	73	60%	42	87%	6	13%	48	40%	121

## Average Daily Population

Non-sentenced / Sentenced Male / Female

California County Jails - For Months Of April - June 2005

<u>Jurisdiction</u>	Non-sentenced						Sentenced						Total #
	Male		Female		Total		Male		Female		Total		
	#	%	#	%	#	%	#	%	#	%	#	%	
36 . San Bernardino Sheriff's Dept.	3,651	87%	533	13%	4,184	75%	1,132	81%	260	19%	1,392	25%	5,576
37 . San Diego Sheriff's Dept.	2,868	86%	470	14%	3,338	65%	1,485	84%	285	16%	1,770	35%	5,109
38 . San Diego Work Furlough	0	0%	0	0%	0	0%	310	87%	46	13%	355	100%	355
39 . San Francisco Sheriff's Dept.	1,245	89%	154	11%	1,399	77%	351	85%	62	15%	413	23%	1,812
40 . San Joaquin Sheriff's Dept.	667	85%	121	15%	788	60%	438	82%	93	18%	532	40%	1,320
41 . San Luis Obispo Sheriff's Dept	192	84%	37	16%	229	43%	247	82%	52	18%	299	57%	528
42 . San Mateo Sheriff's Dept.	462	88%	65	12%	527	50%	457	86%	76	14%	533	50%	1,060
43 . Santa Ana Police Dept.	348	91%	36	9%	385	97%	9	79%	2	21%	11	3%	396
44 . Santa Barbara Sheriff's Dept.	579	86%	91	14%	670	66%	298	85%	52	15%	350	34%	1,019
45 . Santa Clara Corrections Dept.	2,724	87%	392	13%	3,115	71%	1,118	87%	172	13%	1,290	29%	4,405
46 . Santa Clara Probation Dept.	0	0%	0	0%	0	0%	167	79%	45	21%	212	100%	212
47 . Santa Cruz Sheriff's Dept.	255	89%	33	11%	288	48%	279	88%	38	12%	318	52%	605
48 . Shasta Sheriff's Dept.	259	84%	48	16%	307	76%	79	81%	19	19%	98	24%	405
49 . Sierra Sheriff's Dept.	4	80%	1	20%	5	71%	2	100%	0	0%	2	29%	7
50 . Siskiyou Sheriff's Dept.	69	94%	5	6%	74	78%	15	72%	6	28%	21	22%	95
51 . Solano Sheriff's Dept.	661	87%	99	13%	760	72%	244	83%	50	17%	294	28%	1,054
52 . Sonoma Sheriff's Dept.	562	86%	89	14%	651	57%	422	86%	70	14%	493	43%	1,144
53 . Stanislaus Sheriff's Dept.	694	86%	112	14%	806	62%	391	81%	94	19%	484	38%	1,290
54 . Sutter Sheriff's Dept.	144	85%	26	15%	170	64%	78	81%	18	19%	96	36%	266
55 . Tehama Sheriff's Dept.	91	86%	15	14%	106	61%	52	77%	15	23%	67	39%	173
56 . Trinity Sheriff's Dept.	18	82%	4	18%	22	54%	17	88%	2	12%	19	46%	41
57 . Tulare Sheriff's Dept.	663	87%	96	13%	759	56%	532	90%	62	10%	594	44%	1,353
58 . Tuolumne Sheriff's Dept.	58	84%	11	16%	69	51%	53	81%	13	19%	66	49%	135
59 . Ventura Sheriff's Dept.	644	89%	82	11%	726	47%	669	81%	152	19%	821	53%	1,548
60 . Ventura Work Furlough	0	0%	0	0%	0	0%	88	71%	36	29%	123	100%	123
61 . Yolo Sheriff's Dept.	322	85%	56	15%	378	88%	36	73%	13	27%	50	12%	428
62 . Yuba Sheriff's Dept.	294	81%	70	19%	364	88%	39	77%	12	23%	50	12%	414
<b>Statewide</b>	<b>46,267</b>	<b>88%</b>	<b>6,516</b>	<b>12%</b>	<b>52,783</b>	<b>67%</b>	<b>22,569</b>	<b>85%</b>	<b>3,834</b>	<b>15%</b>	<b>26,402</b>	<b>33%</b>	<b>79,186</b>

## Jail Populations: Quarter 2, 2004 Versus Quarter 2, 2005

Jurisdiction	Qtr 2, 2004	Qtr 2, 2005	Qtr 2, 2005 Minus Qtr 2, 2004	Qtr 2, 2004 To Qtr 2, 2005 % +/-	% of Total Increase or Decrease	Cum %	Cum Total
Los Angeles Sheriff's Dept.	16,948	17,354	406	2.4%	17.7%	17.68%	406
Orange Sheriff's Dept.	5,707	6,083	376	6.6%	16.4%	34.04%	782
Santa Clara Corrections Dept.	4,109	4,405	296	7.2%	12.9%	46.93%	1,078
San Bernardino Sheriff's Dept.	5,418	5,576	158	2.9%	6.9%	53.81%	1,236
Tulare Sheriff's Dept.	1,207	1,354	147	12.2%	6.4%	60.21%	1,383
Santa Barbara Sheriff's Dept.	918	1,020	102	11.1%	4.4%	64.65%	1,485
Kern Sheriff's Dept.	2,146	2,240	94	4.4%	4.1%	68.74%	1,579
Stanislaus Sheriff's Dept.	1,197	1,290	93	7.8%	4.0%	72.79%	1,672
San Luis Obispo Sheriff's Dept.	457	527	70	15.3%	3.0%	75.84%	1,742
San Francisco Sheriff's Dept.	1,748	1,812	64	3.7%	2.8%	78.62%	1,806
Monterey Sheriff's Dept.	1,124	1,174	50	4.4%	2.2%	80.80%	1,856
San Diego Work Furlough	307	356	49	16.0%	2.1%	82.93%	1,905
Shasta Sheriff's Dept.	358	405	47	13.1%	2.0%	84.98%	1,952
Merced Sheriff's Dept.	663	704	41	6.2%	1.8%	86.77%	1,993
Marin Sheriff's Dept.	280	317	37	13.2%	1.6%	88.38%	2,030
Placer Sheriff's Dept.	496	531	35	7.1%	1.5%	89.90%	2,065
Glenn Sheriff's Dept.	124	148	24	19.4%	1.0%	90.94%	2,089
Napa Corrections Dept.	232	254	22	9.5%	1.0%	91.90%	2,111
El Dorado Sheriff's Dept.	316	337	21	6.6%	0.9%	92.82%	2,132
Madera Corrections Dept.	355	372	17	4.8%	0.7%	93.56%	2,149
Del Norte Sheriff's Dept.	122	139	17	13.9%	0.7%	94.30%	2,166
Humboldt Sheriff's Dept.	361	377	16	4.4%	0.7%	94.99%	2,182
Sacramento Sheriff's Dept.	3,561	3,576	15	0.4%	0.7%	95.65%	2,197
Modoc Sheriff's Dept.	29	40	11	37.9%	0.5%	96.13%	2,208
Inyo Sheriff's Dept.	75	86	11	14.7%	0.5%	96.60%	2,219
Sutter Sheriff's Dept.	256	266	10	3.9%	0.4%	97.04%	2,229
Lake Sheriff's Dept.	252	262	10	4.0%	0.4%	97.47%	2,239
Tuolumne Sheriff's Dept.	126	135	9	7.1%	0.4%	97.87%	2,248
Yolo Sheriff's Dept.	420	428	8	1.9%	0.3%	98.22%	2,256
Amador Sheriff's Dept.	85	92	7	8.2%	0.3%	98.52%	2,263
Sonoma Sheriff's Dept.	1,138	1,144	6	0.5%	0.3%	98.78%	2,269
Butte Sheriff's Dept.	493	498	5	1.0%	0.2%	99.00%	2,274
Mariposa Sheriff's Dept.	49	53	4	8.2%	0.2%	99.17%	2,278
Ventura Work Furlough	120	124	4	3.3%	0.2%	99.35%	2,282
Kings Sheriff's Dept.	287	291	4	1.4%	0.2%	99.52%	2,286
Yuba Sheriff's Dept.	410	414	4	1.0%	0.2%	99.70%	2,290
Trinity Sheriff's Dept.	40	42	2	5.0%	0.1%	99.78%	2,292
Lassen Sheriff's Dept.	90	92	2	2.2%	0.1%	99.87%	2,294
Santa Clara Probation Dept.	211	213	2	0.9%	0.1%	99.96%	2,296
Mendocino Sheriff's Dept.	278	279	1	0.4%	0.0%	100.00%	2,297
Calaveras Sheriff's Dept.	77	77	0	0.0%	0.0%	100.00%	2,297
Mono Sheriff's Dept.	36	36	0	0.0%	0.0%	100.00%	2,297
Sierra Sheriff's Dept.	7	6	-1	-14.3%	0.2%	0.19%	-1
Colusa Sheriff's Dept.	47	46	-1	-2.1%	0.2%	0.38%	-2
Nevada Sheriff's Dept.	180	179	-1	-0.6%	0.2%	0.57%	-3
San Benito Sheriff's Dept.	123	121	-2	-1.6%	0.4%	0.96%	-5
San Joaquin Sheriff's Dept.	1,322	1,319	-3	-0.2%	0.6%	1.53%	-8
Santa Ana Police Dept.	405	397	-8	-2.0%	1.5%	3.07%	-16
Oakland Police Dept.	113	105	-8	-7.1%	1.5%	4.60%	-24
Solano Sheriff's Dept.	1,062	1,053	-9	-0.8%	1.7%	6.32%	-33
Plumas Sheriff's Dept.	60	50	-10	-16.7%	1.9%	8.24%	-43
Contra Costa Sheriff's Dept.	1,675	1,663	-12	-0.7%	2.3%	10.54%	-55
Siskiyou Sheriff's Dept.	108	95	-13	-12.0%	2.5%	13.03%	-68
Santa Cruz Sheriff's Dept.	621	605	-16	-2.6%	3.1%	16.09%	-84
Ventura Sheriff's Dept.	1,564	1,548	-16	-1.0%	3.1%	19.16%	-100
Fresno Sheriff's Dept.	3,018	3,002	-16	-0.5%	3.1%	22.22%	-116
Imperial Sheriff's Dept.	636	616	-20	-3.1%	3.8%	26.05%	-136
Tehama Sheriff's Dept.	195	173	-22	-11.3%	4.2%	30.27%	-158
Riverside Sheriff's Dept.	3,260	3,215	-45	-1.4%	8.6%	38.89%	-203
San Diego Sheriff's Dept.	5,176	5,109	-67	-1.3%	12.8%	51.72%	-270
San Mateo Sheriff's Dept.	1,151	1,060	-91	-7.9%	17.4%	69.16%	-361
Alameda Sheriff's Dept.	4,063	3,902	-161	-4.0%	30.8%	100.00%	-522

77,412	79,187	1,775
	Total Increase:	2,297
	Total Decrease:	-522

Note: Totals subject to slight variation due to rounding



**Interpretation of Table:**  
**JAIL POPULATIONS: 2<sup>nd</sup> Quarter '04 versus 2<sup>nd</sup> Quarter '05**

This table:

- summarizes the ADP results for the 62 jurisdictions in California reporting data from Type II, III, and IV jails;
- summarizes jurisdiction ADP results for the most recent quarter (Column C);
- compares jurisdiction ADP for the most recent quarter with the same quarter last year (Column B);
- ranks the jurisdictions in terms of gains or losses in ADP from high to low (Column D);
- lists the percentage growth or decline in ADP for each jurisdiction (Column E);
- lists the percentage of the overall State increase or decrease in ADP that is represented by each jurisdiction (Column F);
- lists, by jurisdiction, the cumulative percentage increase and decrease in the State ADP starting with the jurisdiction with the highest percentage of the increase and proceeding to the jurisdiction with the highest percentage of the decrease (Column G);
- lists, by jurisdiction, the cumulative total increase and decrease in the State ADP starting with the jurisdiction with the highest increase and proceeding to the jurisdiction with the biggest decrease (Column H); and,
- lists the jurisdictions that experienced decreases in their ADP as shaded.

Some important conclusions from this table are:

1. The two numbers at the bottom indicate the "total increase" in ADP (in this case 2,297) and "total decrease" in ADP (-522). In other words, the jurisdictions experiencing increases had a total increase of 2,297 ADP; and the jurisdictions experiencing decreases had a total decrease of 522 ADP. Subtracting 522 from 2,297 produces the overall increase of 1,775 between the second quarter of 2004 and the second quarter of 2005.
2. The Los Angeles County ADP increase of 406 is 17.7% of the total increase of 2,297. Forty jurisdictions had increases (down to Mendocino Sheriff's Department) with 2 jurisdictions reporting no increases (Calaveras Sheriff's Department and Mono Sheriff's Departments). When you get to Mono Sheriff's Department, you have accounted for 100% of the increases (100% of the cumulative total of 2,297).
3. Jurisdictions that experienced a decrease in ADP are listed from smallest decrease to largest decrease (Sierra Sheriff's Department to Alameda Sheriff's Department). When you get to the bottom of the table, you have accounted for 100% of the total decreases of 522 inmates.
4. The cumulative percentage of ADP increase for the top four jurisdictions (Los Angeles Sheriff's Department to San Bernardino Sheriff's Departments) is 53.8%. In other words, four jurisdictions accounted for over 53% of the total ADP increase. Three jurisdictions (San Diego, San Mateo, and Alameda Sheriff's Departments) account for about 61% of the decreases with Alameda Sheriff's Department accounting for 30.8% of the total decrease.