



DEPARTMENT OF CORRECTIONS AND REHABILITATION  
CORRECTIONS STANDARDS AUTHORITY

RECEIVED  
CORRECTIONS STANDARDS  
AUTHORITY  
MAR 18 P 3:54

**2007 LOCAL JAIL CONSTRUCTION  
FUNDING PROGRAM  
PROPOSAL FORM**

*This document is not to be reformatted.*

A19-08

**SECTION 1: PROJECT INFORMATION**

**A: APPLICANT INFORMATION**

**COUNTY NAME**

Amador County

**AMOUNT OF STATE FUNDS REQUESTED**

\$ 22,712,000

**SMALL COUNTY  
(200,000 OR UNDER GENERAL COUNTY  
POPULATION)**



**MEDIUM COUNTY  
(200,001 - 700,000 GENERAL COUNTY  
POPULATION)**



**LARGE COUNTY  
(700,001+ GENERAL COUNTY  
POPULATION)**



**B: TYPE OF PROJECT**

**FACILITY NAME**

Amador County Adult Detention Facility (ACADF)

**NEW FACILITY**



**EXISTING FACILITY**



**FACILITY TYPE (II, III or IV)**

II

**REGIONAL JAIL PROJECT**



**STREET ADDRESS**

Lot #53, Locomotive Lane at Boxcar Boulevard

**CITY**

Martell

**STATE**

California

**ZIP CODE**

95654

**C: BRIEF PROJECT TITLE**

**Amador County Adult Detention Facility (ACADF)**

**D. SCOPE OF WORK – JAIL CONSTRUCTION (CHECK ONE)**

☒ **BUILDING NEW FACILITY**

☐ **RENOVATION/REMODELING OF  
EXISTING FACILITY AND ADDING BEDS**

☐ **ADDING BEDS AT EXISTING FACILITY**

**WILL THE PROPOSED PROJECT BE USED TO REPLACE AN EXISTING FACILITY?** ☒ **YES** ☐ **NO**

**E. NET BED GAIN, COUNTY-WIDE**

**Include the TOTAL number of CSA-rated beds and non-rated special use beds FROM ALL DETENTION FACILITIES COUNTY-WIDE that will be added, eliminated or gained as a result of the project. (+BEDS ADDED -BEDS ELIMINATED =BEDS GAINED)**

<b>MINIMUM SECURITY BEDS</b>	No. of rated beds added 60	No. of rated beds eliminated 0	No. of rated beds gained 60
<b>MEDIUM SECURITY BEDS</b>	No. of rated beds added 90	No. of rated beds eliminated 68	No. of rated beds gained 22
<b>MAXIMUM SECURITY BEDS</b>	No. of rated beds added 15	No. of rated beds eliminated 8	No. of rated beds gained 7
<b>SPECIAL USE BEDS</b>	No. of non-rated beds added 0	No. of non-rated beds eliminated 0	No. of non-rated beds gained 0
<b>COUNTY- WIDE TOTAL</b>	No. of beds added 165	No. of beds eliminated 76	No. of beds gained 89

**F: APPLICANT'S AGREEMENT**

By signing this proposal, the authorized person assures that: a) the county will abide by the laws, regulations, policies and procedures governing this funding, and b) certifies that the information contained in this proposal form, budget, narrative and attachments is true and correct to the best of his/her knowledge.

**NAME AND TITLE OF PERSON AUTHORIZED TO SIGN AGREEMENT (SHERIFF, DIRECTOR OF CORRECTIONS, OR BOARD OF SUPERVISORS' CHAIR)**

Richard Forster, Chairman, Board of Supervisors

**AUTHORIZED PERSON'S SIGNATURE****DATE**

March 11, 2008

**G: DESIGNATED COUNTY CONSTRUCTION ADMINISTRATOR**

This person shall be responsible to oversee construction and administer the state/county agreements. (Must be county personnel, not consultants or contractors, and must be identified in the Board of Supervisors' resolution.)

**COUNTY CONSTRUCTION ADMINISTRATOR**

Jon Hopkins, General Services Director

**DEPARTMENT**

General Services Department

**TELEPHONE NUMBER**

209.223.6375

**STREET ADDRESS**

12200-B Airport Road

**FAX NUMBER**

209.223.0749

**CITY**

Jackson

**STATE**

California

**ZIP CODE**

95642

**E-MAIL ADDRESS**

jhopkins@co.amador.ca.us

**H: DESIGNATED PROJECT FINANCIAL OFFICER**

This person is responsible for all financial and accounting project related activities. (Must be county personnel, not consultants or contractors, and must be identified in the Board of Supervisors' resolution.)

**PROJECT FINANCIAL OFFICER**

Terri Daly, County Administrative Officer

**DEPARTMENT**

County Administration

**TELEPHONE NUMBER**

209.223.6470

**STREET ADDRESS**

810 Court Street

**FAX NUMBER**

209.257.0619

**CITY**

Jackson

**STATE**

California

**ZIP CODE**

95642

**E-MAIL ADDRESS**

tdaly@co.amador.ca.us

**I: DESIGNATED PROJECT CONTACT PERSON**

This person is responsible for project coordination and day-to-day liaison work with CSA. (Must be county personnel, not consultants or contractors, and must be identified in the Board of Supervisors' resolution.)

**PROJECT CONTACT PERSON**

Ron Rockett, Captain

**DEPARTMENT**

Amador County Sheriff's Office

**TELEPHONE NUMBER**

209.223.6500

**STREET ADDRESS**

700 Court Street

**FAX NUMBER**

209.223.1609

**CITY**

Jackson

**STATE**

California

**ZIP CODE**

95642

**E-MAIL ADDRESS**

rrockett@co.amador.ca.us

## SECTION 2: COST AND BUDGET SUMMARY

### A. COST SUMMARY

Indicate the amount of state funds requested and the amount of cash match and in-kind match the county is contributing in defining the total eligible project cost. The amount of state funds requested cannot exceed 75% of the total eligible project cost or the respective capped state dollar amounts as shown below, whichever is the smaller amount, regardless of county size. (Any county meeting the minimum cash match requirement will receive points for cash match; greater points will be given to those projects with more cash match when computed as a percentage of the total state funds requested.) Small counties may request a reduction of in-kind match. See below.

FUND SOURCE	AMOUNT	% OF TOTAL
<b>State Funds Requested:</b> (May not exceed: \$100,000,000 for large counties; \$80,000,000 for medium counties; \$30,000,000 for small counties).	\$ 22,712,000	75.00%
<b>Cash Match:</b> (large counties - 10% minimum) (small & medium counties - 5% minimum)	\$ 2,565,346	8.47%
<b>In-Kind Match*:</b> (large counties – 15% maximum) (small & medium counties - 20% maximum*)	\$ 5,005,321	16.53%
<b>TOTAL ELIGIBLE PROJECT COST:</b>	\$ 30,282,667	100 %

#### \*SMALL COUNTIES REQUESTING MATCH REDUCTION:

Counties under 200,000 in population may petition the Corrections Standards Authority (CSA) Board for a reduction in the percentage of in-kind match contribution. (Small counties must still contribute a minimum of 5% cash match.) Counties have two options for submitting a petition for a reduction in match as detailed below. Counties may not petition after funding award.

1. **Advance notice.** Counties interested in petitioning the CSA Board at the earliest possible Board meeting date, and prior to submittal of a proposal by the March 18, 2008 deadline, must contact CSA staff as soon as possible to make arrangements.
2. **Concurrent with the submittal of the proposal.** Counties may submit a petition with their proposal and request that their petition go before the CSA Board at the next possible Board meeting date.

If your county has or will be petitioning the CSA Board for a reduction in in-kind match, please check the appropriate box below and provide the requested details.

☐ **Advance Notice** – Please indicate the date of the CSA Board meeting in which your petition was heard, the outcome of the petition request, and the in-kind match percentage the county must now contribute:

☐ **Concurrent with Submittal of Proposal** – Please state your in-kind match reduction needs and request, including the request for the petition to be heard at the next possible CSA Board meeting:

**B. BUDGET SUMMARY**

Consistent with the Cost Summary in Section 2, indicate the amount of state funds, cash match and in-kind match allotted to each budget category. In the space below the table, provide a brief explanation of line items as requested.

LINE ITEM	STATE FUNDS	CASH MATCH	IN-KIND MATCH
1. Construction (No moveable Equipment/Furnishings)	\$ 22,712,000	\$ 0	\$ 0
2. Architectural		\$ 2,452,896	\$ 0
3. CEQA		\$ 112,450	\$ 0
4. Construction Management		\$ 0	\$ 0
5. Audit of Grant			\$ 12,450
6. Site Acquisition (Cost or Current Fair Market Value)			\$ 2,500,344
7. Needs Assessment			\$ 65,510
8. County Administration			\$ 1,984,467
9. Transition Planning			\$ 442,550
<b>TOTAL PROJECT COST:</b>	<b>\$ 22,712,000</b>	<b>\$ 2,565,346</b>	<b>\$ 5,005,321</b>

Provide line item descriptions, including how state funds and match dollar amounts have been determined and calculated, and how budget items are linked to scope of work. Describe how funding sources are maximized for this construction project:

During preliminary architectural programming, the county planning team worked diligently to program only those spaces required by Title 24 to house and program inmates without adding any "frills." A preliminary program statement and staffing plan was developed so that these two documents would "drive" the planning and design effort in order to maximize funding and reduce construction and operational costs.

### SECTION 3: PROJECT TIMETABLE

Prior to completing this timetable, the county must consult with all appropriate county staff (e.g., county counsel, general services, public works, county administrator, etc.) to ensure that dates are achievable and that the county has reviewed the state agreement requirements portions of the RFP, including project scope and timeline impact due to the State Public Works Board process. Complete the table below indicating start and completion dates for each key event, and including comments if desired. Construction must be complete within three years from Notice to Proceed, and occupancy must occur within 90 days of construction completion.

KEY EVENTS	START DATES	COMPLETION DATES	COMMENTS
Schematic Design with Operational Program Statement	6/1/2008	9/1/2008	Select architect in advance
Design Development with Staffing Plan	9/8/2008	3/15/2009	
Staffing/Operating Cost Analysis	10/13/2008	3/15/2009	Submit with DD.
Construction Documents	3/18/2009	9/30/2009	Approval from Board of Supervisors
Construction Bids	10/15/2009	1/10/2010	
Notice to Proceed	2/15/2010	4/15/2010	
Construction	4/30/2010	6/30/2011	
Occupancy	7/1/2011	10/21/2011	Allows 90 days for transition.

## SECTION 4: NARRATIVE (ABSTRACT)

**Project Need.** The existing Amador County Jail has a CSA rated capacity of 76 beds while the 2008 needs assessment projects a need of 165 beds in 2011. Extensive overcrowding has forced the Sheriff to place bunks in dayrooms. Separation and segregation by classification cannot occur because of the lack of a sufficient, flexible housing and the overcrowding. These conditions create an environment that is unsafe for officers, inmates and visitors. **Detention Alternatives.**



*The existing Amador County Jail has less than half the beds projected by the 2008 needs assessment. This makes it very difficult to separate inmates in accordance with the Sheriff's classification plan.*

Additional alternative programs have been adopted over the last six years. These alternatives allow the Sheriff to alleviate the overcrowding somewhat. **Scope of Work and Project Impact.** Amador County is applying for \$22,712,000 in state funds to construct 165 beds (75% of project costs). \$2,565,346 in cash match (8.47% of costs) and \$5,005,321 of in-kind match (16.53% of costs) is being provided. The new 165-bed facility will be constructed on a new site because the existing jail cannot be expanded and the Sheriff cannot afford to operate jails on two sites. The new construction will greatly alleviate overcrowding. The proposed facility will include extensive program space so that a number of additional programs can be offered to reduce recidivism. This staff and operationally efficient ADF will comply with Title 24 and facilitate compliance with Title 15. Safety and security for officers, staff, inmates and citizens will be improved. The potential for conditions of confinement lawsuits will be reduced. The county is a participant in the CDCR reentry and mental health preferences programs. **Administrative Work Plan.** Amador County has completed a needs assessment, master plan and preliminary architectural program. A work plan has been developed that maximizes county participation and ensures that the project will be completed on time, within budget and meet all requirements and standards. "Green" building principles will be used.

## SECTION 4: NARRATIVE (PROJECT NEED)

**Introduction - Project Need.** The existing Amador County Jail has a CSA rated capacity of 76 beds while the 2008 needs assessment projects a need of 165 beds in 2011. Extensive overcrowding has forced the Sheriff to place bunks in dayrooms. Separation and segregation by classification cannot occur because of the lack of a sufficient, flexible housing and the overcrowding. These conditions create an environment that is unsafe for officers, inmates and visitors.



*Holding area at the Amador County Jail. Overcrowding sometimes forces the Sheriff to use holding cells or the sobering cell for housing temporarily.*

**Conclusions of the 2008 Jail Needs Assessment (JNA) and Expected Future Growth.** The data included in the JNA indicates that if past relationships between adult detention facility admissions, detention days served and county population continue, then the average daily population of the future Amador County Adult Detention Facility will fall within the following ranges:

Table 1  
Projected ADP 2010 - 2040

Year	High Projected ADP	Projected Casino Impact	Revised High ADP
2010	132	10	142
2020	156	12	168
2030	180	14	193
2040	202	15	217

SCS 6e: 542 1 C. 6598 70 September 20070

The Sheriff and his staff have elected to use the high projections because of the uncertainty brought about by overcrowding in the state prison system and the releases occasioned by the state budget

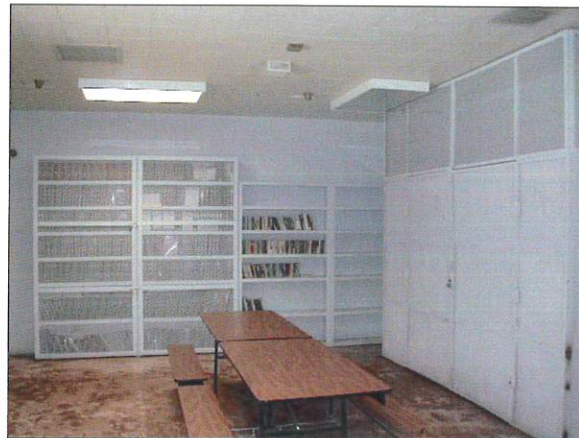
crisis. The concern is that state prison inmates most likely will “backup” into county jail systems. Because of these concerns, the county immediately needs the 165 beds projected for 2010 – 2011. (144 beds are needed for 2011. This number has been rounded up to 165 beds for staffing and the construction efficiency associated with meeting Title 24 ratios and to accommodate classification needs in terms of bed types.)

**Security, Safety and Health Needs.** There are not enough beds in Amador County to meet adult detention needs in the near future. This situation is exacerbated by the overcrowding in the state prison system, which may require counties to house additional inmates if the Federal Court establishes a population capacity (“cap”) for the state system. A “cap” on the state prison system may cause the CDCR to delay accepting inmates from county jails or force the early release of Amador County inmates who may then return to the county and commit additional crimes. If additional beds are not constructed, in some cases criminals who should serve time will not serve any time while other felons may be released early.

The jail is so overcrowded that no allowance can be made for peaking and classification and the routine or emergency maintenance required in inmate housing areas. Adequate separation and segregation resulting from the classification of inmates cannot occur because of the overcrowding and the lack of a sufficient, flexible housing. Thus, while the staff has the ability to classify, they do not have the ability to physically segregate those inmates who should be separated because of their classification. The crowded conditions have forced the Sheriff to place bunks in dayrooms that were not intended for that purpose. This makes these areas much more difficult for officers to manage and control. Holding cells routinely are used to house inmates. This creates an environment that is unsafe for officers, inmates and visitors.

The age of the building systems (e.g. fire alarms, security electronics, etc.) at the Amador County Jail require extensive maintenance and makes these systems more expensive to operate.

**Program Needs.** Only one small space is available to fulfill all of the programmatic needs of the inmates incarcerated in the jail and this space also is used for storage and video arraignment. As a result, programs and classes to reduce recidivism cannot be conducted as often as is necessary to ensure success. A new facility with adequate program space will allow for a wide variety of programs to reduce recidivism. Not only will the Sheriff's Department be able to enhance existing programs, but staff also will be able to introduce a number of programs that have been successful in other jurisdictions.



*Program space is extremely limited in the Amador County Jail. This makes it difficult to conduct evidence-based programs to reduce recidivism. This room is the only space available for programs and the room also is used for storage and video arraignment. (The video arraignment equipment is kept in the locked cabinets in the right of the picture.*

**Non-Compliance Findings.** The major non-compliance issues concern the use of the sobering cell as temporary housing and exceeding the CSA rated capacity of the facility. In response the Sheriff's Office has increased the use of alternatives including Home Electronic Monitoring (HEM), Sheriff's Parole and work release to reduce the jail population. Over the last three years up to 10% of the jail population has been on these programs. A new adult detention facility will remedy both of these areas of non-compliance.

**Average Daily Population (ADP) Compared to System Capacity.** Over the last five years reported (2002 - 2006) the Amador County Jail ADP has averaged 85, or 9 inmates over the CSA rated

capacity of 76. The county detention system obviously is overcrowded. The ADP does not include any contract beds.

**County Population Estimates.** Table 2 illustrates the Department of Finance estimates for Amador County population growth through 2040.

Table 2  
Projected Amador County Population 2010 – 2040

Calendar Year	County Population
2010	40,337
2015	47,593
2020	54,788
2040	61,550

Source: C. 125642 Off 21 5f F2. 4c1; D13 5g6 ph2 R171. 6h U42. S1pt13 b162007.

**Sentenced vs. Unsented Inmates.** In 2006 the ADP for the Amador County Jail was 89, and the jail held an average of 36 sentenced inmates and 53 unsentenced inmates. Thus approximately 60% of the jail population was unsentenced while approximately 40% the jail population was sentenced.

## SECTION 4: NARRATIVE (DETENTION ALTERNATIVES)

**Introduction – Detention Alternatives.** Alternative programs allow the Sheriff to continue to work towards relieving the chronic overcrowding at the Amador County Jail. With the addition of new alternatives over the last six years, the county has established a wide range of educational, prevention, intervention and treatment programs that are successfully preventing adults from being placed in the Amador County Jail other than as a last resort.



*For the last six years officers from the Amador County Sheriff's Office have worked diligently to ensure that incarceration only is used when no viable alternative is available.*

As intended, alternatives have allowed the justice system to remain functional even with less than half of the needed beds. Unfortunately the lack of jail beds removes the sanction for alternative program failure thereby severely diluting the alternatives.

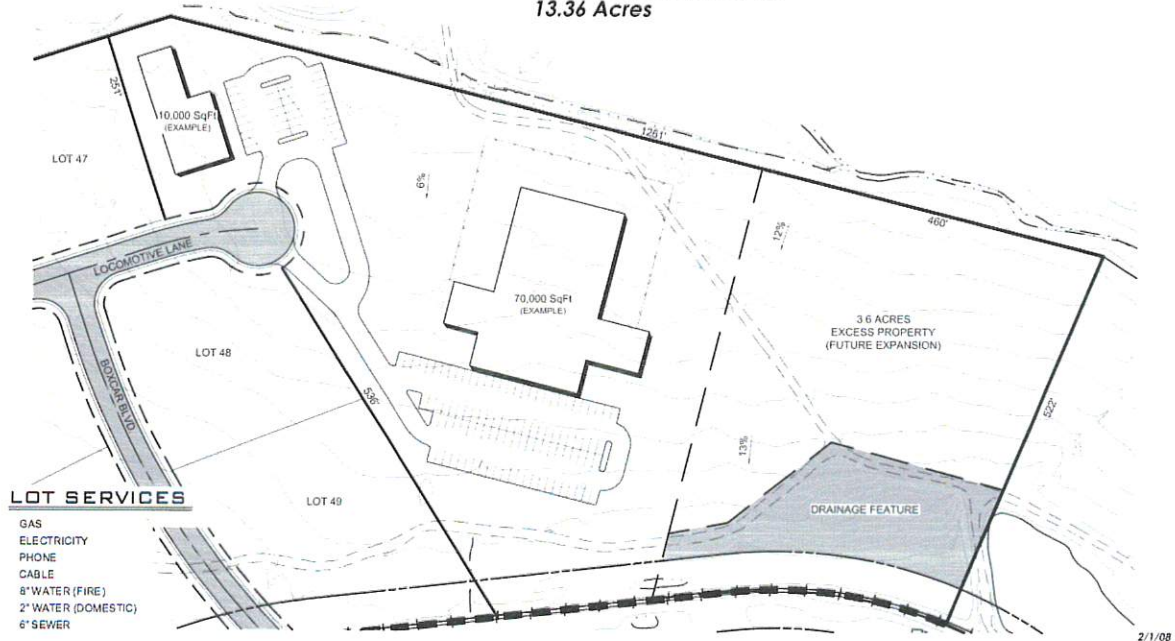
**Actions to Reduce Crowding.** Chronic crowding has been a problem in the Amador County Jail since 2002 when the jail's Average Daily Population (ADP) regularly began to exceed the CSA rated capacity of 76 beds.. Fortunately jail staff has worked proactively since then to develop and implement additional successful detention alternatives so that incarceration continues to be used only when necessary.

**Risk-Based Detention System.** Detention alternatives that have been developed and implemented as part of the county's risk-based assessment model over the last decade are described on the following page. The development of these detention alternatives has been a collaborative effort led by Sheriff's Office staff and involving other county agencies, departments and groups who provide services to and/or have an interest in reducing the recidivism of Amador County criminals.

## SECTION 4: NARRATIVE (SCOPE OF WORK & PROJECT IMPACT)

### **Future Jail/Sheriff Facility**

Lot 53 - Amador Central Business Park  
13.36 Acres



*Amador County already has completed a preliminary program statement and staffing plan as well as a preliminary architectural program for the proposed Amador County Adult Detention Facility (ACADF). The ACADF will occupy a site with the proposed Sheriff's Administration Building as illustrated above.*

**Scope of Work and Project Impact.** Amador County is applying for \$22,712,000 in state funds to construct 165 beds (75% of project costs). \$2,565,346 in cash match (8.47% of costs) and \$5,005,321 of in-kind match (16.53% of costs) is being provided. The new 165-bed facility will be constructed on the site illustrated above because the existing jail cannot be expanded and the Sheriff cannot afford to operate jails on two sites. The new construction will greatly alleviate overcrowding. The proposed facility will include extensive program space so that a number of additional programs can be offered to reduce recidivism. This staff and operationally efficient ACADF will comply with Title 24 and facilitate compliance with Title 15. Safety and security for officers, staff, inmates and citizens will be improved. The potential for conditions of confinement

lawsuits will be reduced. The county is a participant in the CDCR reentry and mental health preferences programs.

**Design Goals for the Amador County Adult Detention Facility (ACADF).** The ACADF will:

- be a state-of-the-art, new generation, direct visual supervision, podular, adult detention facility that meets all of the requirements of Title 24 of the *California Code of Regulations*;
- provide a safe and secure environment for staff, visitors, volunteers and adults with a well defined secure perimeter that includes pedestrian and vehicular sally ports;
- include a central control that controls the secure perimeter and has visual supervision of the housing units and recreation areas as well as other secure areas;
- consist of housing units with the flexibility to meet a wide variety of varying classification needs (e.g. mental health housing units, female housing units, special needs housing units, units of varying security levels, etc.);
- meet Amador County's adult detention immediate requirements for 2011 with planned expansion (Amador County has elected to pursue AB 900 funding in order to preserve scarce county resources. This funding only will permit funding to meet 2011 bed needs);
- provide spaces for a wide variety of programs to reduce recidivism and thus reduce county, state and federal criminal justice system costs;
- provide a professional work environment and adequate space for custody staff, teachers, medical and mental health professionals and other professionals providing services and volunteers;
- be cost efficient to build and operate;
- be energy efficient and environmentally friendly to reduce operating costs;
- be staff efficient to preserve county resources;

- include an intake/release/processing area that is large enough to meet all booking needs and, simultaneously, provide an area for release and transportation staging (intake/release/processing spaces often are undersized in detention facilities);
- provide adequate medical and mental health spaces to reduce the need for transportation outside the facility and to ensure that each inmate is evaluated, treated, monitored and assigned to appropriate programs;
- meet the requirements of the Americans with Disabilities Act (ADA);
- provide adequate, easily supervised adult exercise and recreation spaces (including those required for large muscle group activities) to reduce tension and contribute to the success of programs;
- include food service spaces and facilities as necessary to ensure that meals meet the nutritional requirements determined by the county and to provide vocational education opportunities (Amador County intends to continue to contract with an outside agency for food service. Meals will be prepared off site and transported to the new ACADF;
- provide laundry services to clean inmate clothing, bedding and associated items;
- include adequate storage (storage also often is undersized in detention facilities); and
- provide secure spaces for contact, non-contact and video visiting.

**Identified Need (Facility Type).** The new adult detention facility will be constructed at the site previously described to meet detention needs through 2010. The new Amador County Adult Detention Facility (ADF) will be a Type II Facility (i.e. a local detention facility used for the detention of persons pending arraignment, during trial and upon sentence of commitment as defined in Title 24 of the California Code of Regulations)

**Housing.** 165 new beds will be constructed. Housing pods will be sized to provide adequate control (i.e. separation and flexibility) and to maximize staffing efficiency. The preliminary allocation of beds by type is discussed below.

**Single Occupancy Cells.** A total of 15 beds will be provided in single occupancy cells for maximum-security, disciplinary segregation, administrative segregation and protective custody inmates. An adequate number of ADA cells will be provided. All cells will be “wet.” Stainless steel combination fixtures [or detention grade porcelain fixtures] will be used. The bed and a desk will be wall mounted.

**Double Occupancy Cells.** A total of 90 beds in 45 double occupancy cells will be provided for medium-security inmates. Adequate ADA cells will be provided. All cells will be “wet.” Stainless steel combination fixtures [or detention grade porcelain fixtures] will be used. Two beds and a desk will be wall mounted.

**Dormitories.** A total of 60 beds in the facility will be in dormitories for housing minimum-security inmates. ADA dormitory beds, seating and plumbing fixtures will be provided as necessary. An adequate ratio of stainless steel combination fixtures [or detention grade porcelain fixtures] to inmates will be provided.

**Dayrooms.** Dayrooms will be provided at the rate of thirty-five square feet per inmate and will contain anchored tables and seating to accommodate the maximum number of inmates allowed access to the dayroom at any given time in each housing unit. Access will be provided to toilets, washbasins, drinking fountains and showers from the dayroom. Dining will occur in the dayroom of each housing unit. ADA accommodations will be provided as necessary.

**Intake/Release/Processing.** Intake, release and processing will occur in the new intake/release/processing areas. Holding cells, safety cells, sobering cells, showers for inmates, toilet facilities for staff and inmates, medical triage rooms, processing area, administrative office area and interview will be provided. Space for inmate property storage and inmate clothing storage will be provided

along with spaces for staff use. A weapons locker will be provided at the vehicular sally port. Staff will have unobstructed access to hot and cold running water and an eyewash station. Telephones will be provided for inmate use.

**Public Visiting.** Video, non-contact and contact visiting will be provided. Video visiting will be the primary method used for visitation.

**Program Space.** Program rooms will be provided at each housing unit. Activities that will occur in these spaces include adult education, religious services and counseling, AA and NA classes, behavioral health evaluations and classes along with other programs to reduce recidivism

**Medical and Behavioral Health Services.** Medical services areas and secure pharmaceutical storage will be provided for medical screening and routine medical care. More advanced care, which cannot be provided at the new Amador County ADF will be provided outside of the facility. Behavioral health professionals will evaluate inmates and provide behavioral health programs as necessary. Interview rooms and program space will be provided for this purpose.

**Outdoor Exercise.** An enclosed, secure outdoor exercise area will be attached to each new housing unit. This area will be observable from within the housing unit and from the control area. The area will be a secure area that is partially covered for use in inclement weather and have a clear height of at least fifteen feet. The "open" area of the wall structure will be covered with high security mesh to prevent escape. Access will be provided to a toilet, washbasin and drinking fountain. ADA accessibility will be provided as necessary. There will be at least one completely enclosed outdoor exercise area of not less than 600 square feet. This 600 square foot Title 24 requirement can be met by constructing one or all of the secure, attached outdoor recreation areas at the housing units to meet this square footage requirement. Special care will be taken to eliminate opportunities for escape and the introduction of contraband. All exercise areas will be under direct visual observation by housing control. Recreation areas will accommodate inmates with disabilities.

**Attorney Interview Rooms.** Private video visitation booths will be provided for attorney/client visits. Contact visiting rooms will be located adjacent to the housing units to allow attorneys to consult confidentially with inmate clients. One interview room in the intake/release/processing area will be configured with a secure paper pass and also may be used for confidential meetings between attorneys and inmates.

**Confidential Interview Rooms.** Additional confidential interview rooms will be provided near or within the new housing areas. The interview rooms will be used by custody, behavioral health and health care staff as well as by attorneys, religious advisors and others as authorized by the Sheriff's Office. The interview rooms will be accessible to male and female inmates and they will not be monitored.

**Central Control.** The central control room will monitor and operate all security perimeter penetrations. Additionally, central control will monitor each housing unit and be capable of overriding the pod control stations in each housing pod. Central control will have direct visual supervision of the housing units, the attached outdoor exercise areas and the program spaces. CCTV will be used to assist in the control of the perimeter penetrations and unoccupied spaces that are covered with intrusion alarms. The CCTV will be activated by the activation of an intrusion alarm in unoccupied spaces.

**Housing Pod Control.** Housing pod control stations on each pod will control the communications, cell doors, lighting and showers in each pod. Intercom stations will be monitored and controlled at the pod control station. Pod control will have the capability of switching all controls to central control.

**Administration.** The administrative areas will reflect the professionalism of the staff. Space will be provided for administrative and custody staff as necessary. Staff toilet rooms, locker rooms, a break room and briefing/meeting/training suite will be provided.

**Staff Facilities.** The staffing plan will be prepared before the facility is designed. Thus, care will be taken during the design to be certain that the facility does not generate additional staff stations not required by "best practice." All staff stations will be ergonomically designed. Male and female locker rooms will be provided with lockers for all staff as well as shower and toilet facilities. An adjacent exercise area and training room also will be provided.

**Public Areas.** Public areas will be provided to accommodate visitors while still maintaining the security of the facility. A complete entry control package will be included at the public entrance along with a locked storage for visitors to secure their belongings before meeting with inmates. All public areas will be ADA compliant.

**Food Service.** Shell space for a future kitchen will be provided. The future kitchen will provide vocational educational opportunities for inmates. In the meantime the county will continue to contract for food service off-site. Inmates will be fed in the dayrooms of their respective housing units. Sack lunches will be provided for inmates who are away from the facility for the day (e.g. on work crews, inmates likely to be in court for the day, etc.).

**Laundry.** A new vocational laundry will be provided. Industrial grade washers and dryers will be used in the main laundry. Commercial grade washers and dryers will be provided in the female housing areas.

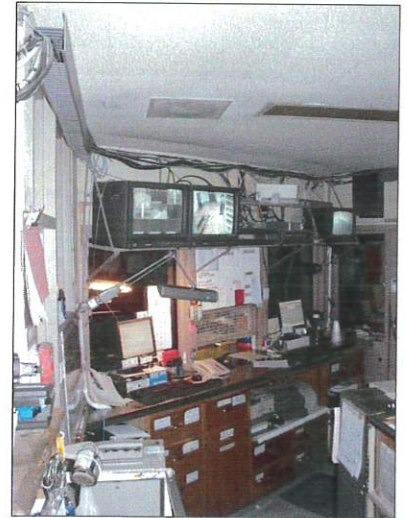
**Maintenance Space.** A maintenance work and storage area will be provided to serve the new ADF. Storage. Institutional storage will be provided as necessary. Additionally, storage areas will be provided in the new housing units and the new intake/release/processing area. Inmate property storage will be provided. The inmate property storage area will include secure storage for inmate valuables.

**Weapons Lockers.** Weapons lockers for the use of law enforcement will be provided outside the intake/release/processing area (in the vehicle sally port) and in reception.

**Perimeter Security.** The walls of the facility will define the primary maximum-security perimeter. A “keep away” single fence will form a secondary perimeter defining “no man’s land.”

**Contrast Pre-Construction with Post-Construction Conditions.** Post-construction the CCADF described above will eliminate the urgent service gap in the criminal justice system created by the lack of an adequate jail. This urgent service gap is illustrated by the following description of existing conditions:

- There are not enough beds to meet adult detention needs in the near future. This situation is exacerbated by the overcrowding in the state prison system, which may require counties to house additional inmates if the Federal Court establishes a population capacity (“cap”) for the state system. If additional beds are not constructed, in some cases criminals who should serve time will not serve any time while other felons may be released early. An early release system may be required to prevent overcrowding.
- The age of the building systems (e.g. fire alarms, security electronics, etc.) at the Amador County Jail require extensive maintenance and makes these systems more expensive to operate.
- Adequate separation and segregation resulting from the classification of inmates cannot occur because of the overcrowding and the lack of a sufficient, flexible housing. Thus, while the staff has the ability to classify, they do not have the ability to physically segregate those inmates who should be separated because of their classification. This creates an environment that is unsafe for officers, inmates and visitors.



*Control is an example of the crowded conditions that exist throughout the Amador County Jail. The facility has outlived its useful life and cannot be expanded on the existing site.*

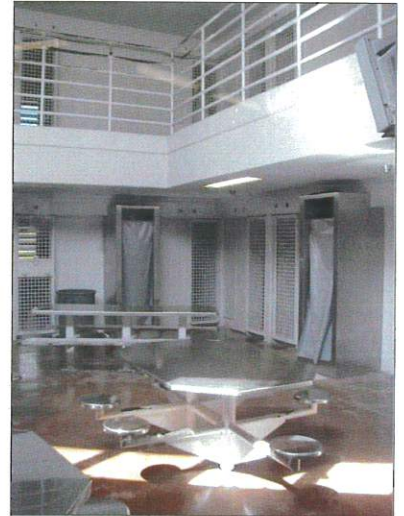
- The jail is so overcrowded that no allowance can be made for peaking and classification and the routine or emergency maintenance required in inmate housing areas.
- Severe overcrowding has forced the Sheriff to place bunks in dayrooms that were not intended for that purpose. This makes these areas much more difficult for officers to manage and control.

**Scope of Work Payable from State Funds.** \$22,712,000 in state monies will fund the construction of 160 beds along with the program and support spaces required by Title 24. As discussed previously, all program and support spaces required by Title 24 are included in this project.

**“Green” Building Principles.** The design team for the proposed CCADF will use “green” building practices as an opportunity to create an environmentally sound and resource efficient detention facility by using an integrated approach to design. “Green” building principles used by the design team will include resource conservation (including energy efficiency) as well as the use of renewable energy and water conservation features. “Green” principles also will be used to consider environmental impact and waste minimization, create a healthy and comfortable environment, reduce operational and maintenance costs and address related issues such as access to public transportation and other county and community infrastructure systems. Life-cycle costs of the new CCADF continuously will be analyzed as will the economic and environmental impact and performance of the building.

## SECTION 4: NARRATIVE (ADMINISTRATIVE WORK PLAN)

**Administrative Work Plan.** Amador County has completed a needs assessment, master plan and preliminary architectural program. A work plan has been developed that maximizes county participation and ensures that the project will be completed on time, within budget and meet all requirements and standards. "Green" building principles will be used.



*Housing unit at the Amador County Jail. Building systems are antiquated and require constant and expensive maintenance.*

**Construction and Administrative Work Plan.** A construction and administrative work plan has been developed for the new Amador County Adult Detention Facility (ACADF). The verbiage below describes the construction and administrative work plan that is

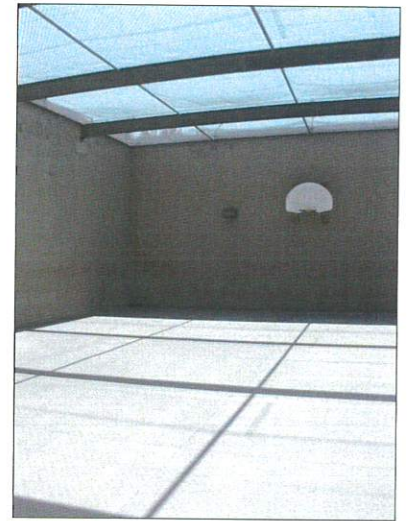
required for a successful project. The process is designed specifically to make the most efficient use of available resources while maintaining the project scope (quality), budget and schedule.

This work plan includes proven project delivery methods to ensure successful completion of the proposed scope on time and within budget. The plan also includes CSA and federally mandated requirements for grant funding. The plan consists of the following elements:

- Development of the recently completed needs assessment:
  - the elements of the system;
  - the operational and design philosophy of the Amador County Sheriff's Office;
  - a description of the current inmate population;
  - discussion of the classification system;

- a description of program needs such as planned academic programs (including special education programs) and an analysis of Amador County's performance in using alternative programs to reduce detention facility needs;
  - analysis of the local system's trends and characteristics that influence planning assumptions about future corrections systems change, including population projections, current and projected inmate populations and program costs based on continuation of current policies and projections of alternative policies or programs on inmate population growth and program costs;
  - the adequacy of staffing levels;
  - the ability to provide visual supervision;
  - the adequacy of record keeping;
  - a history of compliance with standards; and
  - a discussion of any unresolved issues.
- Detailed conceptual level planning that includes:
    - information on and required by funding sources including the monitoring of matching funds (state and Federal funding include certain reporting and inspection requirements);
    - refinement of the preliminary program statement;
    - refinement of the preliminary staffing plan;
    - development of the preliminary architectural program;
    - refinement of the conceptual budget;
    - the analysis of the construction costs and total project costs;
    - the development of Amador County Sheriff's Office operational and staffing costs that will be incurred once construction is complete;
    - the development of maintenance costs that will be incurred once construction is complete;
    - the refinement of the preliminary schedule; and

- plans for continued compliance with CSA pre-contractual requirements.
- Presentation to and approval by the Amador County Board of Supervisors during planning, design, the development of construction documents and during construction (including the preparation of appropriate graphics).
- Development of the architectural program (a preliminary architectural program already has been completed) including:
  - the preliminary code analysis;
  - an analysis of the requirements of Titles 15, 19 and 24 of the *California Code of Regulations*;
  - the staffing and operational analysis which will include a refinement of the staffing plan and refinement of the program statement; and
  - any required refinement of the project timeline.
- Preparation of traditional schematic design and design development documents.
- Transition planning that begins with the establishment of the transition team during design and continues through move-in and post-occupancy activities.
- Continuous design/value engineering to make the most efficient use of available resources (i.e. provide a cost effective design) and preserve life cycle costs.
- Continuous user input from the Amador County Sheriff's Office staff and others providing programs and services at the proposed facility.
- Continuous code analysis.
- Independent cost estimates during the design and construction document phases to remain within 5% of the conceptual budget.



*Outdoor Recreation.*

- Continuous analysis of the requirements of Titles 15, 19 and 24 of the California Code of Regulations including the required reviews and inspections by staff from the Corrections Standards Authority and the State Fire Marshal.
- Ongoing schedule review and analysis to be certain that the project is ready for occupancy as planned.
- The preparation of construction documents (drawings and specifications) including the required reviews by CSA staff and the State Fire Marshal.
- Constructability reviews during design and during the preparation of construction documents to use the most effective construction means and methods in order to ensure competitive bidding and to reduce change orders.
- Peer review during the preparation of design and construction documents to provide the best possible solutions to design and construction issues.
- Continuous analysis of staffing, operations and life cycle costs in order to design and build the most cost effective facility possible.
- Marketing of the project to potential contractors and sub-contractors to increase the potential for competitive bids and to increase the number of bidders.
- Bidding activities including the opening of bids and the preparation and signing of the construction contract. (The successful bidder must post payment and performance bonds in amounts of not less than 100 percent of the contract price as required by CSA.).
- Construction administration, coordination and inspection.
- Preparation of the quarterly invoices and progress reports as required by grant funding procedures.
- Construction closeout activities including:
  - punch list development and the monitoring of the completion of punch list items;
  - cost reconciliation and final audit;

- final invoice and progress payment;
- collection of warranties;
- preparation of the final “as-built” drawings; and
- collection of operation and maintenance manuals.

- Transition and move-in activities including:

- equipment commissioning;
- facility “shake-down;”
- operations and security “walk-through;”
- staff occupancy training; and
- the phased move-in of inmates (Experience has shown that move-in is an intense time for staff and inmates. A phased move-in allows staff and inmates to adjust with less tension. This results in the reduced risk of self-harm by inmates and reduced sick leave requests by staff. CSA staff strongly recommends a phased move-in.)

- Periodic post-occupancy evaluations at one, two and five years after occupancy.



*Property Room. Storage is lacking throughout the jail.*

**Readiness to Proceed.** Amador County’s readiness to proceed is illustrated by the following:

- The planning team for this project was established by the Sheriff in August 2007 and the architectural consulting firm was hired.
- The county prepared their 2008 needs assessment in order to determine the requirements for the proposed Amador County Adult Detention Facility (ACADF) and identify the bed need for 2010 - 2011.
- The preliminary staffing plan and Program Statement were completed for the new detention facility in early 2008 and have been used to guide the architectural program and the conceptual design.

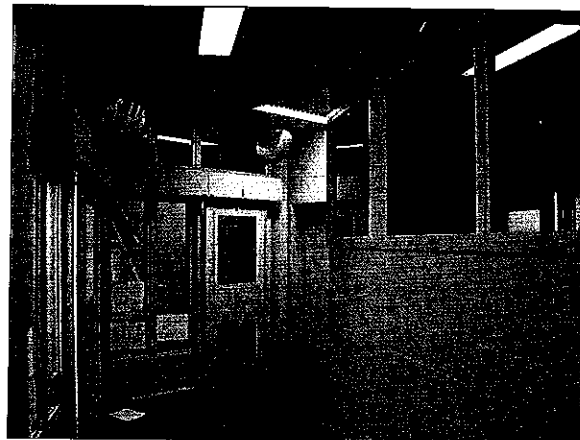
- The site for the new ACADF is being purchased and it will be owned by Amador County no later than ninety days after conditional grant award.
- The Sheriff's transition team and officers from the jail have taken tours of state-of-the-art detention facilities.
- Funding has been identified and earmarked for the required cash and in-kind matching funds as indicated in the attached Board resolution.
- Preliminary environmental studies are in process for the selected site.
- The Amador County Board of Supervisors, County Administration and the Sheriff are committed to building the new, podular adult detention facility envisioned in the recently completed preliminary architectural program as indicated by the attached resolution from the Board of Supervisors. The Board regularly is briefed by the Sheriff and the architectural consultant.

*Staff spaces in the Amador County Jail are cramped and inefficient.*

**Project Controls.** The Director of General Services has insisted that the planning team use proven quality assurance methods to be certain that the project is delivered on time, within budget and meets expectations. These quality control procedures ensure that all documents are complete and properly coordinated. Project controls for planning have included:

- the establishment of effective communication links between and among all participants in the project including regulatory agencies;
- early discussions with oversight organizations such as the Corrections Standards Authority and the State Fire Marshal;
- continuous schedule review and refinement in planning and design team bi-weekly review meetings;
- the traditional peer review of planning documents by senior professionals who have not been involved with our project (the "fresh set of eyes" or "two heads are better than one" approach);

- outside peer review by professionals in the various planning, architectural and engineering disciplines (the "outside expert" approach);
- the use of extensive checklists specifically related to planning and design issues for adult detention facilities;
- the use of checklists provided by the CSA and State Fire Marshal;



*Secure corridor between control and the housing units.*

- participation in continuing education opportunities related to individual disciplines and to this facility type; and
- active participation by consultants in professional societies such as the American Correctional Association, the American Jail Association, the National Sheriff's Association, the California State Sheriff's Association, the American Society for Industrial Security, the American Institute of Architects, the American Society of Heating, Refrigerating and Air Conditioning Engineers as well as a number of other professional societies and associations.

Additional quality control methodologies will be applied to design activities and the preparation of construction documents. These methodologies include:

- use of design/value engineering processes in design team weekly review meetings;
- commitment to using only those security and detention products that have been proven in a detention environment for at least five years;
- continuation of the traditional peer review of design and construction documents (as the project progresses) by senior professionals who have not been involved with our project to be certain that all documents are coordinated and that all documents are developed above

industry standards (again, the "fresh set of eyes" or "two heads are better than one" approach);

- the assignment of a single professional on the architectural team who is responsible for ensuring that any changes are reflected in all architectural and engineering documents and that all documents are coordinated;
- independent constructability analysis by professionals who examine the construction documents from a contractor's perspective (to check the clarity of the documents in order to receive competitive bids and reduce the potential for change orders);
- independent code analysis to be certain all construction documents are code compliant;
- reconciliation of cost estimates provided by two independent entities (the design team's estimate and one additional estimate provided by an independent cost estimator);
- periodic operational/security reviews including the development of scenarios to test security;
- the use of extensive checklists specifically related to life safety and security issues in adult detention facilities (these scenarios will then be used for staff training once the ACADF is occupied); and
- the continued use of checklists provided by the CSA and State Fire Marshal.

## SECTION 5: FUNDING PREFERENCES

AB 900 legislation (Chapter 7, Statutes of 2007), Government Code Sections 15820.907(b) and 15820.907(c) require that jail construction funding preference be given to counties that assist the state in siting reentry facilities; and/or assist the state in siting mental health day treatment and crisis care services to parolees; and/or provide a continuum of care to parolees at the conclusion of their period of parole. Applicants may choose to meet any one or more of these funding preferences. Check the boxes for all that apply.

### A. REENTRY FACILITY SITING PREFERENCE (300 POINTS)

Counties that agree to assist the state in siting a reentry facility will receive a gradation of points within the 300 point range. A resolution from the County Board of Supervisors must accompany the proposal (see Section 6 for requirements and specified resolution language). Each county participating in a regional state reentry facility siting will be qualified for the preference points afforded for that assistance.

☒ **Yes.** 1. 150 points (minimum) – The County has signed an Agreement to Cooperate with the California Department of Corrections and Rehabilitation and in the Board of Supervisors' resolution, stipulates that a Reentry Planning Team is planned or existing, and is evidenced through providing copies of local meeting/planning documents (i.e., letters providing notification of meeting dates and team membership).

☒ **Yes.** 2. 300 points (maximum) – The identified reentry facility site location(s) is stipulated in the Board of Supervisors' resolution, accompanied by a resolution from the City Council if the site is owned by the city, and includes those components named in number 1 above.

☐ **No.** The county is not applying for jail construction funding preference under this criterion.

### B. PAROLEE MENTAL HEALTH SERVICES PREFERENCE (100 POINTS)

Counties that agree to assist the state in siting mental health day treatment and crisis care services to parolees; and/or counties who agree to provide a continuum of care to parolees at the conclusion of their period of parole will receive a gradation of points within the 100 point range. A resolution from the County Board of Supervisors must accompany the proposal (see Section 6 for requirements and specified resolution language).

☒ **Yes.** 1. 50 points (minimum) – The County agrees to assist the state in siting mental health day treatment and crisis care for parolees, and/or the County agrees to provide a continuum of care for mental health and substance abuse treatment so that parolees can continue to receive services at the conclusion of their period of parole.

BEFORE THE BOARD OF SUPERVISORS OF THE  
COUNTY OF AMADOR, STATE OF CALIFORNIA

IN THE MATTER OF:

RESOLUTION AUTHORIZING APPLICATION )  
FOR AN ADULT DETENTION FACILITY AB ) RESOLUTION NO. 08-038  
900 CONSTRUCTION GRANT FROM THE )  
CALIFORNIA DEPARTMENT OF )  
CORRECTIONS AND REHABILITATION )

WHEREAS, the existing Amador County Jail lacks sufficient beds to impose criminal sanctions for felons sentenced in Amador County and is in need of being replaced; and,

WHEREAS, the existing jail is the only structure used to house adult inmates sentenced to county jail in Amador County; and,

WHEREAS, the need for a new adult detention facility has been identified by a Title 24 needs assessment completed in February 2008;

NOW, THEREFORE, BE IT RESOLVED by the Board of Supervisors of the County of Amador that this Board hereby:

1. Authorizes Richard M. Forster, Chairman of the Board of Supervisors of Amador County, to sign the Applicant's Agreement grant application and submit the application for grant funding for the purpose of constructing a new 165-bed adult detention facility with a probable construction cost of Twenty Two Million Seven Hundred Twelve Thousand Dollars (\$22,712,000.00). A county cash match of at least Two Million Five Hundred Sixty Five Thousand Three Hundred Forty Six Dollars (\$2,565,346.00) and a county in-kind match of at least Five Million Five Thousand Three Hundred Twenty One Dollars (\$5,005,321.00) will be required (subject to a petition to have the in-kind match reduced)] for a total eligible Project cost of Thirty Million Two Hundred Eighty Two Thousand Six Hundred Sixty Seven Dollars (\$30,282,667);

2. Appoints Jon Hopkins, General Services Director, as the County Construction Administrator; Terri Daly, County Administrative Officer, as the Project Financial Officer; and Ron Rockett, Captain, Sheriff's Office, as the Project Contact Person;

3. Assures that the County will adhere to state requirements and the terms of the agreements between Amador County, the California Department of Corrections and Rehabilitation (CDCR), the Corrections Standards Authority and the State Public Works Board in the expenditure of state funds and county matching funds;

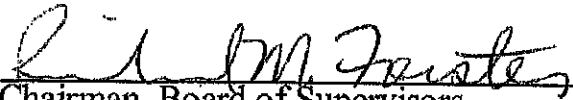
4. Assures that the County has appropriated, or will appropriate after conditional project award but before state/county funding agreements, the amount of match identified by the County on the funding proposal form submitted to the Corrections Standards Authority; identifies the source of cash match and when appropriated, and assures that state and cash matching funds do not supplant funds otherwise dedicated or appropriated for construction activities;
5. Assures that the County will fully and safely staff and operate the new adult detention facility that is being constructed (consistent with Title 15, California Code of Regulations) within ninety (90) days after project completion;
6. Assures that not later than ninety (90) days following the Corrections Standards Authority's notice of Intent to Award, the County will have project site control [through either fee simple ownership of the site or comparable long-term possession of the site] and right of access to the project sufficient to assure undisturbed use and possession of the site, and will not dispose of, modify the use of, or change the terms of real property title, or other interest in the site of the facility subject to construction, or lease the facility for operation to other entities, without permission and instructions from the Corrections Standards Authority;
7. Attests to Two Million Five Hundred Thousand Three Hundred Forty Four Dollars (\$2,500,344.00) as the proposed site acquisition land cost for the proposed new adult detention facility.
8. Agrees to work with CDCR toward achieving the goal of improving successful reintegration of adult offenders into the communities of the County through participation with San Joaquin and Calaveras Counties in a CDCR-approved regional reentry facility. The County has signed an Agreement to Cooperate with CDCR dated December 4, 2007, which has been signed and returned to the County by CDCR. The County has formed a Reentry Planning Team for the purpose of working collaboratively with CDCR, as evidenced by copies of local meeting/planning documents. The regional reentry facility is located in the City of Stockton in San Joaquin County. This resolution is accompanied by a resolution from the Stockton City Council whereby the City has agreed to work with CDCR toward achieving the goal of improving successful reintegration of adult offenders into the local community. The City resolution also states that a Reentry Planning Team exists for the purpose of working collaboratively with CDCR, as shown by copies of local meeting/planning documents.
9. Agrees to assist the State in siting mental health crisis care services for parolees and agrees to provide a continuum of care for mental health and substance abuse treatment so that parolees can continue to receive services at the conclusion of their period of parole. These services will be provided in the same manner as they are provided to all Amador County citizens at the following locations: 10877 Conductor Blvd, Suite 300, Sutter Creek, California 95685 and other locations as necessary.

The foregoing resolution was duly passed and adopted by the Board of Supervisors of the County of Amador at a regular meeting thereof, held on the 11th day of March 2008 by the following vote:

AYES: Louis D. Boitano, Richard M. Forster, Rich F. Escamilla, Theodore Novelli, and Brian Oneto

NOES: None

ABSENT: None

  
Chairman, Board of Supervisors


ATTEST:

JENNIFER BURNS, Clerk of the  
Board of Supervisors, Amador County,  
California

  
Deputy

THE FOREGOING INSTRUMENT  
A CORRECT COPY OF THE ORIGINAL  
ON FILE IN THIS OFFICE

ATTEST: MAR 11 2008

Deputy   
Clerk of the Board of Supervisors  
Amador County, California



BEFORE THE BOARD OF SUPERVISORS OF THE  
COUNTY OF AMADOR, STATE OF CALIFORNIA

IN THE MATTER OF:

RESOLUTION AUTHORIZING APPLICATION )  
FOR AN ADULT DETENTION FACILITY AB ) RESOLUTION NO. 08-038  
900 CONSTRUCTION GRANT FROM THE )  
CALIFORNIA DEPARTMENT OF )  
CORRECTIONS AND REHABILITATION )

WHEREAS, the existing Amador County Jail lacks sufficient beds to impose criminal sanctions for felons sentenced in Amador County and is in need of being replaced; and,

WHEREAS, the existing jail is the only structure used to house adult inmates sentenced to county jail in Amador County; and,

WHEREAS, the need for a new adult detention facility has been identified by a Title 24 needs assessment completed in February 2008;

NOW, THEREFORE, BE IT RESOLVED by the Board of Supervisors of the County of Amador that this Board hereby:

1. Authorizes Richard M. Forster, Chairman of the Board of Supervisors of Amador County, to sign the Applicant's Agreement grant application and submit the application for grant funding for the purpose of constructing a new 165-bed adult detention facility with a probable construction cost of Twenty Two Million Seven Hundred Twelve Thousand Dollars (\$22,712,000.00). A county cash match of at least Two Million Five Hundred Sixty Five Thousand Three Hundred Forty Six Dollars (\$2,565,346.00) and a county in-kind match of at least Five Million Five Thousand Three Hundred Twenty One Dollars (\$5,005,321.00) will be required (subject to a petition to have the in-kind match reduced)] for a total eligible Project cost of Thirty Million Two Hundred Eighty Two Thousand Six Hundred Sixty Seven Dollars (\$30,282,667);

2. Appoints Jon Hopkins, General Services Director, as the County Construction Administrator; Terri Daly, County Administrative Officer, as the Project Financial Officer; and Ron Rockett, Captain, Sheriff's Office, as the Project Contact Person;

3. Assures that the County will adhere to state requirements and the terms of the agreements between Amador County, the California Department of Corrections and Rehabilitation (CDCR), the Corrections Standards Authority and the State Public Works Board in the expenditure of state funds and county matching funds;

4. Assures that the County has appropriated, or will appropriate after conditional project award but before state/county funding agreements, the amount of match identified by the County on the funding proposal form submitted to the Corrections Standards Authority; identifies the source of cash match and when appropriated, and assures that state and cash matching funds do not supplant funds otherwise dedicated or appropriated for construction activities;
5. Assures that the County will fully and safely staff and operate the new adult detention facility that is being constructed (consistent with Title 15, California Code of Regulations) within ninety (90) days after project completion;
6. Assures that not later than ninety (90) days following the Corrections Standards Authority's notice of Intent to Award, the County will have project site control [through either fee simple ownership of the site or comparable long-term possession of the site] and right of access to the project sufficient to assure undisturbed use and possession of the site, and will not dispose of, modify the use of, or change the terms of real property title, or other interest in the site of the facility subject to construction, or lease the facility for operation to other entities, without permission and instructions from the Corrections Standards Authority;
7. Attests to Two Million Five Hundred Thousand Three Hundred Forty Four Dollars (\$2,500,344.00) as the proposed site acquisition land cost for the proposed new adult detention facility.
8. Agrees to work with CDCR toward achieving the goal of improving successful reintegration of adult offenders into the communities of the County through participation with San Joaquin and Calaveras Counties in a CDCR-approved regional reentry facility. The County has signed an Agreement to Cooperate with CDCR dated December 4, 2007, which has been signed and returned to the County by CDCR. The County has formed a Reentry Planning Team for the purpose of working collaboratively with CDCR, as evidenced by copies of local meeting/planning documents. The regional reentry facility is located in the City of Stockton in San Joaquin County. This resolution is accompanied by a resolution from the Stockton City Council whereby the City has agreed to work with CDCR toward achieving the goal of improving successful reintegration of adult offenders into the local community. The City resolution also states that a Reentry Planning Team exists for the purpose of working collaboratively with CDCR, as shown by copies of local meeting/planning documents.
9. Agrees to assist the State in siting mental health crisis care services for parolees and agrees to provide a continuum of care for mental health and substance abuse treatment so that parolees can continue to receive services at the conclusion of their period of parole. These services will be provided in the same manner as they are provided to all Amador County citizens at the following locations: 10877 Conductor Blvd, Suite 300, Sutter Creek, California 95685 and other locations as necessary.

4. Assures that the County has appropriated, or will appropriate after conditional project award but before state/county funding agreements, the amount of match identified by the County on the funding proposal form submitted to the Corrections Standards Authority; identifies the source of cash match and when appropriated, and assures that state and cash matching funds do not supplant funds otherwise dedicated or appropriated for construction activities;

5. Assures that the County will fully and safely staff and operate the new adult detention facility that is being constructed (consistent with Title 15, California Code of Regulations) within ninety (90) days after project completion;

6. Assures that not later than ninety (90) days following the Corrections Standards Authority's notice of Intent to Award, the County will have project site control [through either fee simple ownership of the site or comparable long-term possession of the site] and right of access to the project sufficient to assure undisturbed use and possession of the site, and will not dispose of, modify the use of, or change the terms of real property title, or other interest in the site of the facility subject to construction, or lease the facility for operation to other entities, without permission and instructions from the Corrections Standards Authority;

7. Attests to Two Million Five Hundred Thousand Three Hundred Forty Four Dollars (\$2,500,344.00) as the proposed site acquisition land cost for the proposed new adult detention facility.

8. Agrees to work with CDCR toward achieving the goal of improving successful reintegration of adult offenders into the communities of the County through participation with San Joaquin and Calaveras Counties in a CDCR-approved regional reentry facility. The County has signed an Agreement to Cooperate with CDCR dated December 4, 2007, which has been signed and returned to the County by CDCR. The County has formed a Reentry Planning Team for the purpose of working collaboratively with CDCR, as evidenced by copies of local meeting/planning documents. The regional reentry facility is located in the City of Stockton in San Joaquin County. This resolution is accompanied by a resolution from the Stockton City Council whereby the City has agreed to work with CDCR toward achieving the goal of improving successful reintegration of adult offenders into the local community. The City resolution also states that a Reentry Planning Team exists for the purpose of working collaboratively with CDCR, as shown by copies of local meeting/planning documents.

9. Agrees to assist the State in siting mental health crisis care services for parolees and agrees to provide a continuum of care for mental health and substance abuse treatment so that parolees can continue to receive services at the conclusion of their period of parole. These services will be provided in the same manner as they are provided to all Amador County citizens at the following locations: 10877 Conductor Blvd, Suite 300, Sutter Creek, California 95685 and other locations as necessary.

4. Assures that the County has appropriated, or will appropriate after conditional project award but before state/county funding agreements, the amount of match identified by the County on the funding proposal form submitted to the Corrections Standards Authority; identifies the source of cash match and when appropriated, and assures that state and cash matching funds do not supplant funds otherwise dedicated or appropriated for construction activities;

5. Assures that the County will fully and safely staff and operate the new adult detention facility that is being constructed (consistent with Title 15, California Code of Regulations) within ninety (90) days after project completion;

6. Assures that not later than ninety (90) days following the Corrections Standards Authority's notice of Intent to Award, the County will have project site control [through either fee simple ownership of the site or comparable long-term possession of the site] and right of access to the project sufficient to assure undisturbed use and possession of the site, and will not dispose of, modify the use of, or change the terms of real property title, or other interest in the site of the facility subject to construction, or lease the facility for operation to other entities, without permission and instructions from the Corrections Standards Authority;

7. Attests to Two Million Five Hundred Thousand Three Hundred Forty Four Dollars (\$2,500,344.00) as the proposed site acquisition land cost for the proposed new adult detention facility.

8. Agrees to work with CDCR toward achieving the goal of improving successful reintegration of adult offenders into the communities of the County through participation with San Joaquin and Calaveras Counties in a CDCR-approved regional reentry facility. The County has signed an Agreement to Cooperate with CDCR dated December 4, 2007, which has been signed and returned to the County by CDCR. The County has formed a Reentry Planning Team for the purpose of working collaboratively with CDCR, as evidenced by copies of local meeting/planning documents. The regional reentry facility is located in the City of Stockton in San Joaquin County. This resolution is accompanied by a resolution from the Stockton City Council whereby the City has agreed to work with CDCR toward achieving the goal of improving successful reintegration of adult offenders into the local community. The City resolution also states that a Reentry Planning Team exists for the purpose of working collaboratively with CDCR, as shown by copies of local meeting/planning documents.

9. Agrees to assist the State in siting mental health crisis care services for parolees and agrees to provide a continuum of care for mental health and substance abuse treatment so that parolees can continue to receive services at the conclusion of their period of parole. These services will be provided in the same manner as they are provided to all Amador County citizens at the following locations: 10877 Conductor Blvd, Suite 300, Sutter Creek, California 95685 and other locations as necessary.

4. Assures that the County has appropriated, or will appropriate after conditional project award but before state/county funding agreements, the amount of match identified by the County on the funding proposal form submitted to the Corrections Standards Authority; identifies the source of cash match and when appropriated, and assures that state and cash matching funds do not supplant funds otherwise dedicated or appropriated for construction activities;

5. Assures that the County will fully and safely staff and operate the new adult detention facility that is being constructed (consistent with Title 15, California Code of Regulations) within ninety (90) days after project completion;

6. Assures that not later than ninety (90) days following the Corrections Standards Authority's notice of Intent to Award, the County will have project site control [through either fee simple ownership of the site or comparable long-term possession of the site] and right of access to the project sufficient to assure undisturbed use and possession of the site, and will not dispose of, modify the use of, or change the terms of real property title, or other interest in the site of the facility subject to construction, or lease the facility for operation to other entities, without permission and instructions from the Corrections Standards Authority;

7. Attests to Two Million Five Hundred Thousand Three Hundred Forty Four Dollars (\$2,500,344.00) as the proposed site acquisition land cost for the proposed new adult detention facility.

8. Agrees to work with CDCR toward achieving the goal of improving successful reintegration of adult offenders into the communities of the County through participation with San Joaquin and Calaveras Counties in a CDCR-approved regional reentry facility. The County has signed an Agreement to Cooperate with CDCR dated December 4, 2007, which has been signed and returned to the County by CDCR. The County has formed a Reentry Planning Team for the purpose of working collaboratively with CDCR, as evidenced by copies of local meeting/planning documents. The regional reentry facility is located in the City of Stockton in San Joaquin County. This resolution is accompanied by a resolution from the Stockton City Council whereby the City has agreed to work with CDCR toward achieving the goal of improving successful reintegration of adult offenders into the local community. The City resolution also states that a Reentry Planning Team exists for the purpose of working collaboratively with CDCR, as shown by copies of local meeting/planning documents.

9. Agrees to assist the State in siting mental health crisis care services for parolees and agrees to provide a continuum of care for mental health and substance abuse treatment so that parolees can continue to receive services at the conclusion of their period of parole. These services will be provided in the same manner as they are provided to all Amador County citizens at the following locations: 10877 Conductor Blvd, Suite 300, Sutter Creek, California 95685 and other locations as necessary.

Resolution No. **07-0339****STOCKTON CITY COUNCIL****RESOLUTION SUPPORTING THE CONVERSION OF THE  
NORTHERN CALIFORNIA WOMEN'S FACILITY TO A RE-ENTRY FACILITY**

WHEREAS, City officials have been meeting for a number of months with State of California legislators and their representatives, Department of Corrections officials, and San Joaquin County officials to examine ways to address the challenges of the State's overcrowded prison system by using the Northern California Women's Facility; and,

WHEREAS, of equal concern to the City of Stockton and San Joaquin County is the critical need to expand the San Joaquin County jail facility as it too is seriously overcrowded; and,

WHEREAS, Assembly Bill 900 (AB900) contains the provision for \$750 million in revenue bonds for local jail construction, with preference given to counties who assist the State of California in siting re-entry facilities; and,

WHEREAS, AB900 also provides \$50 million for rehabilitation and treatment of prison inmates and parolees; and,

WHEREAS, the City of Stockton's support of this proposal quite possibly presents the best opportunity for this community to receive needed State funding as well as address the State's overcrowded prison system; and,

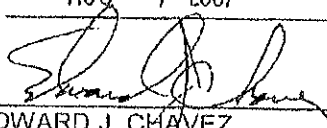
WHEREAS, support of the State of California's proposal has no direct financial impact to the City; now therefore,

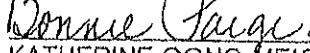
BE IT RESOLVED BY THE COUNCIL OF THE CITY OF STOCKTON, AS FOLLOWS:

1. The City of Stockton supports the San Joaquin County Board of Supervisors' list of social and health services that may be needed to sustain their facilities as set forth in San Joaquin County Board of Supervisors' Resolution No. R-07-051, adopted August 7, 2007.
2. The Stockton City Council supports the conversion of the Northern California Women's Facility to a re-entry facility subject to the community receiving funding from Assembly Bill 900 for local jail construction, rehabilitation and health treatment services, and other potential mitigation actions.

PASSED, APPROVED and ADOPTED AUG - 7 2007

ATTEST:

  
EDWARD J. CHAVEZ  
Mayor of the City of Stockton

 **ASSISTANT**  
KATHERINE GONG MEISSNER  
City Clerk of the City of Stockton

City Atty:

Review 

Date

August 3, 2007



# COUNTY OF SAN JOAQUIN

Office of the County Administrator

County Courthouse, Room 707  
222 East Weber Avenue  
Stockton, California 95202-2778  
(209) 468-3203, Fax (209) 468-2875

**MANUEL LOPEZ**  
County Administrator

**ROSA LEE**  
Assistant County Administrator

August 3, 2007

Board of Supervisors  
Courthouse  
Stockton, CA 95202

Dear Board Members,

## **Resolution Regarding the Northern California Women's Facility**

### **Recommendation**

It is recommended that the Board of Supervisors adopt the attached resolution supporting and requesting use of the Northern California Women's Facility (NCWF) by the California Department of Corrections and Rehabilitation as a reentry facility as such facilities are described in Assembly Bill 900.

### **Reason for Recommendation**

Assembly Bill 900, approved by the Governor May 3, 2007, authorizes the California Department of Corrections and Rehabilitation (CDCR) to enter into construction agreements with participating counties in order to acquire, design, or construct local jail facilities. The Bill authorizes \$750 million to finance such acquisition, design, or construction. The Bill also requires the CDCR to develop reentry program facilities for a total of 16,000 inmates. These reentry facilities are designated for inmates within one year of being released from custody, and are intended to provide services to assist the inmate to re-assimilate into the community.

The legislation limits these facilities to not more than 500 beds each and requires that such facility shall only be established in a city, county, or city and county that requests a reentry program facility. The legislation further requires that such reentry facilities shall provide programming to inmates and parole violators tailored to the specific problems faced by this population when reintegrating back into society, including case management services, employment assistance and wraparound services that provide a continuity of support service between custody and parole. In establishing AB 900, the legislature found that placing an inmate in a secure correctional facility within a community prior to parole into that community provides the opportunity for both parole officers and local law enforcement to better coordinate supervision of that parolee.

Last year, approximately 1,600 inmates were released into San Joaquin County. These releases must occur, therefore, it would be beneficial for the county and the State to work together to provide the most effective reentry services possible to ease the reintegration of the inmate back into the local society. To attempt to work with the State, it is recommended that the County approve and request that the unoccupied NCWF be considered by the CDCR as a reentry facility as described under AB 900. This request would be conditioned with stipulations that such use be

for inmates who are to be released into San Joaquin County, that this be only used for inmates within one year of release from State custody and that the CDCR will provide the programming and assistance required under AB 900. The request does allow for reentry use by inmates to be released into the San Joaquin region, to include Calaveras and Amador counties.

In addition, inasmuch as the NCWF has a capacity of 755 inmates, and AB 900 limits a reentry facility to 500 inmates, the attached resolution also requests the CDCR work with County to consider use of the additional capacity at the NCWF for local jail relief and that San Joaquin County inmates be provided the same services, including case management, employment assistance and wraparound services that are to be provided to CDCR reentry inmates.

In addition, although not specifically part of the attached resolution, the cover letter to CDCR encourages CDRC to assist San Joaquin County to obtain additional State funding for social and health care services including job training, drug and alcohol counseling, and mental health services to support the inmates' families during the time the inmates are housed at the NCWF.

It is anticipated that cooperation with CDCR in the development of this reentry facility will enhance San Joaquin County's opportunity to access state funding for new jail construction as appropriated under AB 900.

The City of Stockton is in support of this recommended action, and the City Council is expected to take similar action at its meeting of August 7, 2007.

#### **Fiscal Impact**

There is no direct fiscal impact to this action. However, requesting the State to use the NCWF could improve San Joaquin County's effort to obtain State matching funds for expansion of the County jail.

#### **Action to Be Taken Following Approval**

The attached letter and resolution will be forwarded to CDCR and appropriate local and state officials for consideration.

Very truly yours,



Manuel Lopez  
County Administrator

ML:PB:abm  
Attachment

c: Sheriff Moore  
County Counsel  
Senator Machado  
Assembly Member Aghazarin  
Assembly Member Galgiani  
Board Clerk for Agenda 08/07/07

BL07-08