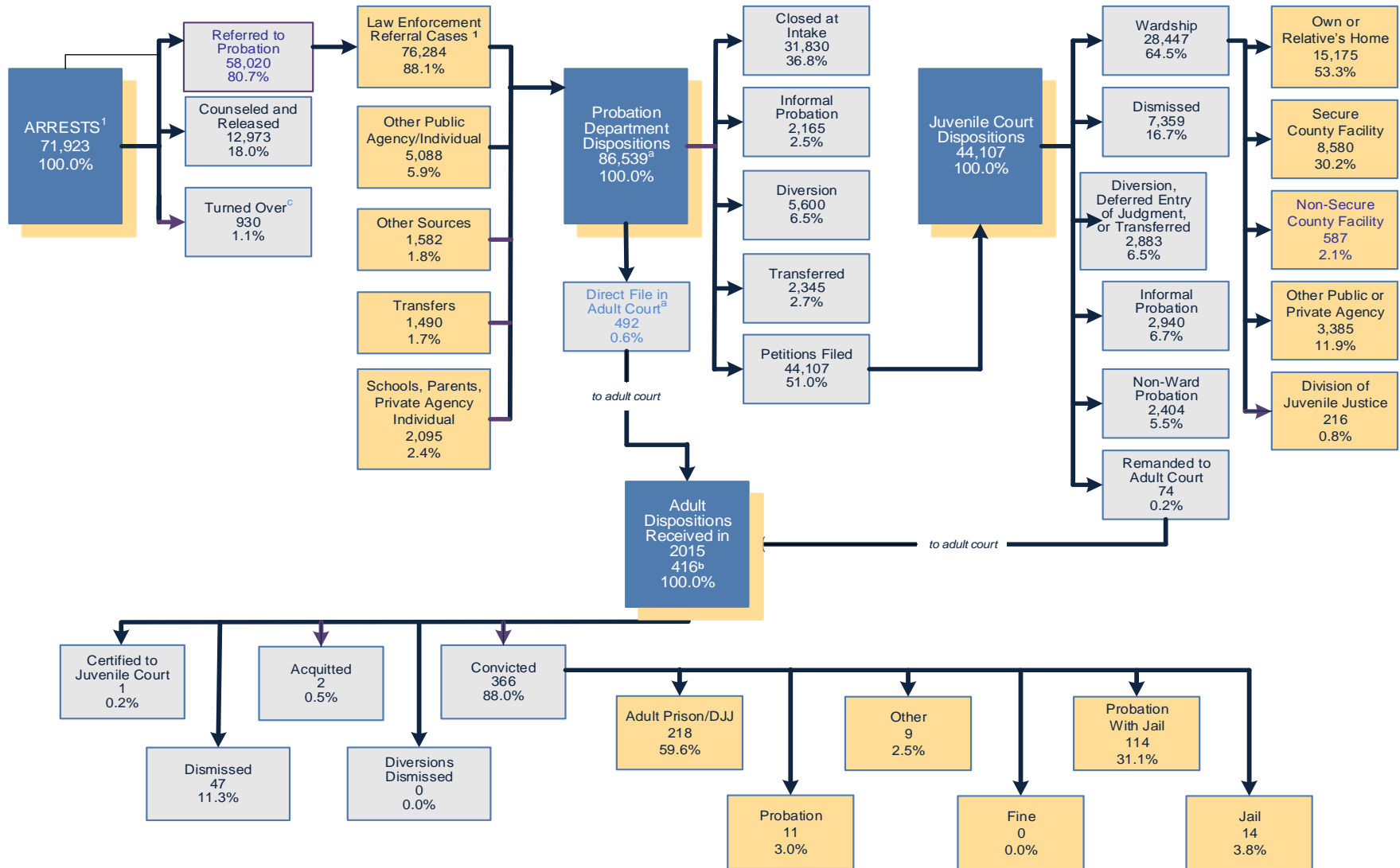


AGENDA ITEM G, ATTACHMENT 2 STATISTICAL DATA OF THE JUVENILE JUSTICE SYSTEM



¹ The arrest data are reported by law enforcement agencies; law enforcement referral data are reported by probation departments. Comparisons between arrest data and referral data should not be made because of differences in the units of count between the two sources.
^a Includes the 492 juveniles sent directly to adult court. In November 2016, California voters approved Proposition 57, which, among other things, ended the ability of prosecutors to "direct file," i.e., file criminal cases against juveniles in adult court.
^b In 2015, probation departments reported information on 566 transfers to the adult system. The adult disposition information being discussed here is for the 416 dispositions received in 2015.
^c Turned Over is defined as turned over to another agency. Source: California Department of Justice report: Juvenile Justice in California 2015

