



ORT Prevent Grant

LEP Webinar
Data Collection and Evaluation

January 24, 2024

WHAT WE WILL DISCUSS

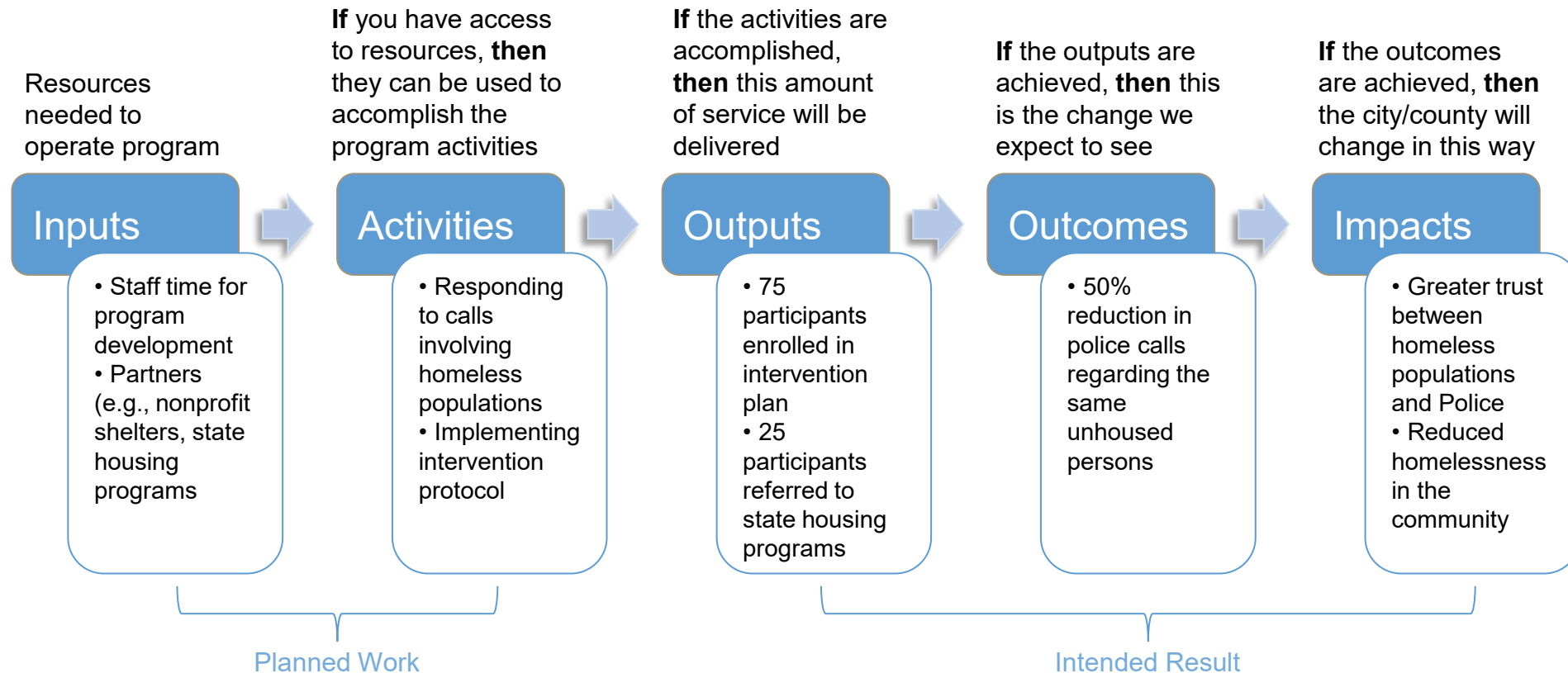
- ◆ Local Evaluation Plan (LEP)
- ◆ Local Evaluation Report (LER)
- ◆ Evaluation Tips and Suggestions

LOCAL EVALUATION PLAN (LEP)

- ◆ Purpose: Ensure projects funded by the BSCC can be evaluated.
- ◆ Due by **April 1, 2024**
- ◆ Resources: LEP Template & Guidelines
- ◆ Minimum Requirements:
 - ◆ Cover Page
 - ◆ Project Background
 - ◆ Project Logic Model
 - ◆ Process Evaluation Method and Design
 - ◆ Outcome Evaluation Method and Design
 - ◆ Appendices (if applicable)

LOGIC MODEL

A visual representation of the project depicting the logical relationships between the inputs/resources, activities, outputs, and outcomes/impacts of a project.



<http://mrsc.org/Home/Stay-Informed/MRSC-Insight/September-2018/Planning-with-Logic-Models.aspx>

LOCAL EVALUATION PLAN (LEP)

- ◆ LEP Question Template
 - ◆ Detailed Questionnaire to develop LEP

WHAT'S IT ALL FOR?

Local Evaluation Report (LER)

LOCAL EVALUATION REPORT

- ◆ Purpose: document results and overall impact.
- ◆ Based on the original Local Evaluation Plan.
- ◆ Due by **June 1, 2027**
- ◆ Minimum Requirements:
 - ◆ Cover Page
 - ◆ Executive Summary
 - ◆ Project Background
 - ◆ Current Logic Model
 - ◆ Process Evaluation Method & Design
 - ◆ Outcome Evaluation Method & Design
 - ◆ Evaluation Results
 - ◆ Discussion of Results
 - ◆ Any changes to Logic Model
 - ◆ Grantee Highlight
 - ◆ Appendices

TIPS AND SUGGESTIONS (SEE HANDOUTS)

- ◆ **Evaluator Roles and Responsibilities**
- ◆ **Data Collection Tips**
- ◆ **Evaluation Resources**
http://www.bscc.ca.gov/s_evaluationresources/
- ◆ **Resources for Data Collection and Management**
<https://www.bscc.ca.gov/grantee-resources-for-data-collection-and-management/>

Local Evaluation Plan and Report

Questions?