

JUVENILE DETENTION PROFILE SURVEY



**FOURTH QUARTER
2010**

Corrections Standards Authority
Facilities Standards and Operations Division
600 Bercut Drive
Sacramento CA 95811
(916) 445-5073
www.csa.ca.gov

JUVENILE DETENTION PROFILE SURVEY

EXPLANATION OF RESULTS

The following link titles contain the Juvenile Detention Profile Survey results for the Fourth Quarter of Calendar Year 2010. **Capacity, Population and ADP Breakout** contains totals for major categories such as Highest One-Day Population, Average Daily Population (ADP), gender, and the age range of detained minors. **Breakout of Juveniles in Detention** contains information regarding counties' ADP and Rated Capacity (RC) breakouts and **Summary of Survey Results** contains information about a wide range of juvenile detention facility issues including crowding, mental health needs, average length of stay, and number of bookings.

Juvenile Hall Data – Part 1 & 2, and Camp Data contains trend information compiled from 2005 through the fourth quarter of calendar year 2010. The trend data is separated into Juvenile Hall related data and Camp related data.

Please keep the following in mind when reviewing this information:

- For Overall Capacity, Crowding (highest one-day population-the count of minors in detention on the day of each county's highest population) and ADP (the average daily detention population for the reporting period), we have complete data from all jurisdictions in the state that operate juvenile detention facilities.
- Each jurisdiction provides us with the average population, computed across all the days in the month, for each of the three months in the quarter. The weighted average across the three months is then computed for each jurisdiction (with the monthly averages weighted by the number of days in the month). The jurisdictions ADPs are then combined to produce the state's total ADP.
- For some variables (other than ADP), we did not receive complete data from all jurisdictions. In such instances, we used statistical procedures to estimate the statewide total.
- Felony/misdemeanor, gender counts, and age-range breakouts are based upon a one-day snapshot (on the 15th day of the final month of the quarter). These values are used to determine the percentage of the population in each felony/misdemeanor, gender, and age category. The percentages are then applied to the Total ADP to project the expected ADP in each of the felony/misdemeanor, gender, and age-range categories.
- ***Please note:*** *Each quarter, every county with juvenile detention facilities submits their data to the CSA. While we make every effort to review data for accuracy, including contacting individual counties for clarification, CSA cannot be responsible for data reporting errors made at the county level.*

California Corrections Standards Authority
Juvenile Detention Profile Survey - 4th Quarter, 2010
Overall Capacity, Population and ADP

Overall Capacity and Population							
	JUVENILE HALL		CAMPS		OTHER	TOTAL	
ADP	5,486.5		3,296.8		1,903.2	10,686.5	
Percent of Total	51.3%		30.9%		17.8%	100.0%	
RC *	8,337.0		5,416.0			13,753.0	
High One Day	6,098.0		3,579.0			9,677.0	

Gender by Detention Type								
	JUVENILE HALL		CAMPS		OTHER		TOTAL	
GENDER	ADP	%	ADP	%	ADP	%	ADP	%
Male	4,734.6	86.3%	2,986.5	90.6%	1,586.8	83.4%	9,308.0	87.1%
Female	751.9	13.7%	310.3	9.4%	316.4	16.6%	1,378.6	12.9%
TOTAL	5,486.5	100.0%	3,296.8	100.0%	1,903.2	100.0%	10,686.5	100.0%

Disposition by Gender for Juvenile Halls							
	MALE		FEMALE		TOTAL		
DISPOSITION	Number	%	Number	%	Number	%	
Pre-Disposition	2,462.1	52.0%	397.7	52.9%	2,859.8	52.1%	
Post-Disposition	2,272.5	48.0%	354.2	47.1%	2,626.7	47.9%	
TOTAL	4,734.6	100.0%	751.9	100.0%	5,486.5	100.0%	

Disposition by Gender for Other Detention							
	MALE		FEMALE		TOTAL		
DISPOSITION	Number	%	Number	%	Number	%	
Pre-Disposition	680.2	42.9%	139.1	44.0%	819.3	43.1%	
Post-Disposition	906.6	57.1%	177.3	56.0%	1,083.9	56.9%	
TOTAL	1,586.8	100.0%	316.4	100.0%	1,903.2	100.0%	

Age Range by Type of Detention (One-Day Snapshot)							
	JUVENILE HALL		CAMPS		TOTAL		
AGE RANGES	Number	%	Number	%	Number	%	
Under 12	2.1	0.0%	1.0	0.0%	3.1	0.0%	
12 to 14	545.1	10.2%	169.0	5.0%	714.1	8.2%	
15 to 17	4,357.6	81.3%	2,525.0	75.1%	6,882.6	78.9%	
18 _Over	456.3	8.5%	667.0	19.8%	1,123.3	12.9%	
TOTAL	5,361.0	100.0%	3,362.0	100.0%	8,723.0	100.0%	

* RC is Rated Capacity which is the number of beds that comply with standards set forth in Title 24, California Code of Regulations.

**County Breakout Report - 4th Quarter, 2010
Facilities and Alternative Detention**

	County	Rated Capacity	Facilities Detention	Other Detention	ADP	Percent of Total	Cumulative Percent
1	Los Angeles	4,144	2,407.3	374.92	2,782.3	26.04%	26.04%
2	San Diego	1,105	776.5	220.01	996.5	9.32%	35.36%
3	Orange	797	590.8	87.54	678.4	6.35%	41.71%
4	Santa Clara	538	369.6	155.36	524.9	4.91%	46.62%
5	Sacramento	270	240.6	249.07	489.7	4.58%	51.20%
6	Kern	475	383.7	37.93	421.6	3.95%	55.15%
7	Riverside	582	357.3	25.48	382.7	3.58%	58.73%
8	Contra Costa	290	278.6	92.62	371.2	3.47%	62.20%
9	Fresno	450	353.3	0.00	353.3	3.31%	65.51%
10	San Bernardino	620	339.7	0.00	339.7	3.18%	68.69%
11	Alameda	463	287.2	45.50	332.7	3.11%	71.80%
12	Tulare	330	190.1	76.61	266.7	2.50%	74.30%
13	San Mateo	274	154.3	98.75	253.1	2.37%	76.66%
14	Stanislaus	158	138.2	53.38	191.5	1.79%	78.46%
15	San Francisco	234	104.8	82.93	187.7	1.76%	80.21%
16	Santa Barbara	272	178.6	0.00	178.6	1.67%	81.88%
17	Monterey	206	155.4	20.05	175.5	1.64%	83.53%
18	Sonoma	188	117.2	57.30	174.5	1.63%	85.16%
19	Ventura	295	167.2	0.00	167.2	1.56%	86.72%
20	Merced	120	103.6	60.07	163.6	1.53%	88.25%
21	San Joaquin	224	161.7	0.00	161.7	1.51%	89.77%
22	Solano	148	104.5	19.52	124.0	1.16%	90.93%
23	Kings	209	92.8	0.00	92.8	0.87%	91.80%
24	El Dorado	80	59.0	11.28	70.3	0.66%	92.45%
25	Placer	58	44.9	22.97	67.9	0.64%	93.09%
26	Yolo	90	51.6	15.10	66.7	0.62%	93.71%
27	Madera	75	46.5	12.65	59.2	0.55%	94.27%
28	Butte	60	50.0	3.99	54.0	0.50%	94.77%
29	Yuba	120	49.2	0.00	49.2	0.46%	95.23%
30	Shasta	56	30.7	15.65	46.3	0.43%	95.67%
31	Napa	50	35.7	10.08	45.7	0.43%	96.09%
32	Colusa	162	45.6	0.00	45.6	0.43%	96.52%
33	Humboldt	44	34.0	6.46	40.4	0.38%	96.90%
34	San Luis Obispo	45	33.3	6.68	40.0	0.37%	97.27%
35	Santa Cruz	42	18.5	15.86	34.4	0.32%	97.59%
36	Del Norte	62	34.3	0.00	34.3	0.32%	97.92%
37	Marin	40	23.0	7.83	30.8	0.29%	98.20%
38	Imperial	72	27.1	0.00	27.1	0.25%	98.46%
39	Nevada	30	19.3	7.36	26.7	0.25%	98.71%
40	Mendocino	43	23.4	0.00	23.4	0.22%	98.93%
41	Glenn	22	18.1	0.00	18.1	0.17%	99.10%
42	Tehama	40	17.1	0.00	17.1	0.16%	99.26%
43	San Benito	20	13.7	1.66	15.4	0.14%	99.40%
44	Siskiyou	20	15.0	0.00	15.0	0.14%	99.54%
45	Lake	40	10.3	3.98	14.3	0.13%	99.67%
46	Lassen	40	10.4	3.35	13.7	0.13%	99.80%
47	Trinity	28	12.3	0.00	12.3	0.12%	99.92%
48	Inyo	14	7.3	0.00	7.3	0.07%	99.99%
49	Amador	0	0.0	0.91	0.9	0.01%	99.99%
50	Mariposa	4	0.2	0.34	0.6	0.01%	100.00%
51	Mono	4	0.0	0.00	0.0	0.00%	100.00%
52	Sierra	0	0.0	0.00	0.0	0.00%	100.00%
53	Tuolumne	0	0.0	0.00	0.0	0.00%	100.00%
		13,753	8,783.4	1,903.2	10,686.5	100.00%	

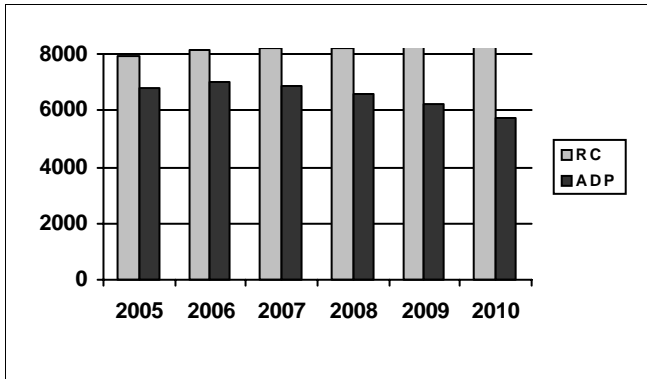
*ADP on County Breakout Report may not equal ADP on other Summary Reports due to rounding

Juvenile Detention Profile Survey

4th Quarter Report 2010			One Day Snapshot				Average Daily Population				
			Misdemeanor		Felony		Pre-Disposition		Post-Disposition		Total ADP
	Rated Capacity	Male	Female	Male	Female	Male	Female	Male	Female		
Juvenile Halls	8,337.0	13.5%	3.8%	30.6%	3.4%	2,462.1	397.7	2,272.5	354.2	5,486.5	
Camps / Ranches	5,416.0	6.2%	1.1%	22.3%	1.8%			2,986.5	310.3	3,296.8	
Other Juveniles in the System		Male	Female	Male	Female	Male	Female	Male	Female	Total ADP	
Juveniles on home supervision with electronic monitoring		3.2%	0.8%	4.9%	1.0%	431.6	79.3	456.7	97.5	1,065.0	
Juveniles on home supervision without electronic monitoring		1.6%	0.5%	2.9%	0.5%	234.0	57.5	262.1	54.7	608.3	
Juveniles alternative confinement programs		0.6%	0.1%	1.1%	0.1%	14.7	2.3	187.8	25.1	229.8	
Grand Totals		25.1%	6.3%	61.8%	6.9%	3,142.3	536.8	6,165.6	841.8	10,686.5	
Mental Health Snapshot											
Number of open mental health cases this day									3,755.0		
Number of juveniles receiving psychotropic medication									1,307.0		
Crowding											
Average daily population of juveniles in other jurisdictions DUE TO LACK OF SPACE									0.0		
Number of juveniles released early DUE TO LACK OF SPACE									57.2		
Average number of days that one or more facilities in a county exceeded the Rated Capacity									3.2		
Average Bookings Per Month											
Number of Juvenile Hall bookings/admissions									6,379.8		
Number of bookings for weapon-related offenses									424.3		
Number of 601 bookings									40.1		
Number of 777 bookings									1,442.7		
Number of direct file {WIC 602(b) and 707(d)} bookings									52.4		
Final Month of the Quarter (One-Day Snapshot)											
Detained for 707b Offense									879.3		
Awaiting placement									442.0		
Awaiting transport to a camp									442.5		
Awaiting transfer to Youth Authority									84.0		
Court commitments to juvenile hall (Ricardo M)									641.0		
Found unfit per 707.01 WIC									104.4		
Direct files to Adult Court-602(b) and 707(d) WIC									383.2		
Hospitalized outside detention facility for MEDICAL CARE									5.0		
Hospitalized outside detention facility for MENTAL HEALTH CARE									5.0		
Believed to be criminal illegal aliens									88.8		
Average Length of Stay											
Juvenile Hall (all releases)									25.6		
Juvenile Hall to Camps									53.3		
Juvenile Hall to other out-of-home placements (i.e. group homes or foster homes)									48.3		
Juvenile Hall who were found unfit (per juvenile court)									319.8		
Juvenile Hall who were direct filings to adult court									212.7		
Camps (all releases)									155.2		
Cumulative Total for the Quarter											
Detention Behavior						Juvenile Halls	Camps / Ranches	Other Detention			
Assaults by juveniles on staff						40.9	13.1	0.0			
Escapes						8.0	87.0	3.1			
Suicide Attempts						39.5	6.0	0.0			
Suicides						0.0	0.0	0.0			

Fourth Quarter Report, 2010 - Juvenile Hall Data

Rated Capacity RC and ADP for Juvenile Halls



The average daily population of California juvenile halls decreased each quarter of 2010. The annual ADP is the lowest reported since the survey began in its current form in 2002. The 2010 average is 1,296 fewer youth in custody than in 2006, the highest year for juvenile hall ADP.

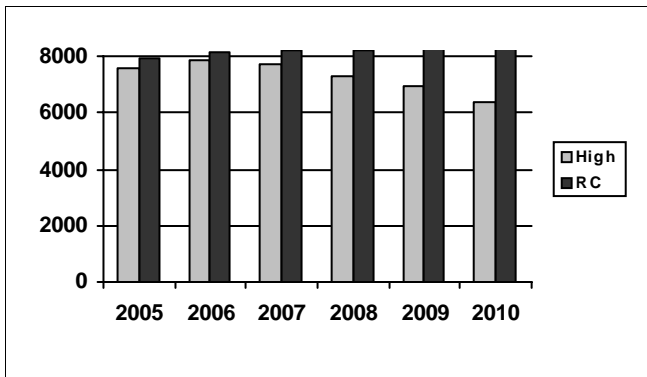
Summary of Juvenile Hall ADP

2005	2006	2007	2008	2009
6,818	7,017	6,858	6,614	6,197

2010 Summary of Juvenile Hall ADP

Q1	Q2	Q3	Q4	Average
5,964	5,940	5,502	5,487	5,721

Juvenile Hall Highest One-Day Population and RC



The highest one day population of California juvenile halls decreased each quarter of 2010. The annual high day data is the lowest reported since the survey began in its current form in 2002. The 2010 average is 1,451 fewer youth in custody than in 2006, the highest year.

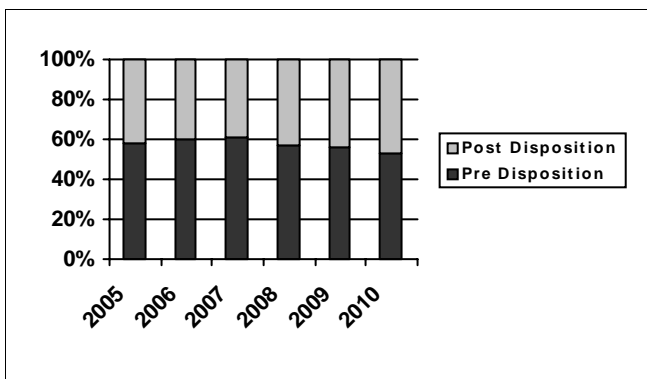
Summary of Juvenile Hall Highest One Day

2005	2006	2007	2008	2009
7,575	7,837	7,686	7,317	6,914

2010 Summary of Highest One-Day Population

Q1	Q2	Q3	Q4	Average
6,698	6,596	6,160	6,098	6,386

Pre-Disposition in Juvenile Halls



The percentage of youth in juvenile halls who are in a pre-disposition status was the same as was reported the previous quarter. The annual average of 53% pre-disposition youth in 2010 represents the third year of decline.

Summary of Pre-Disposition in Juvenile Halls

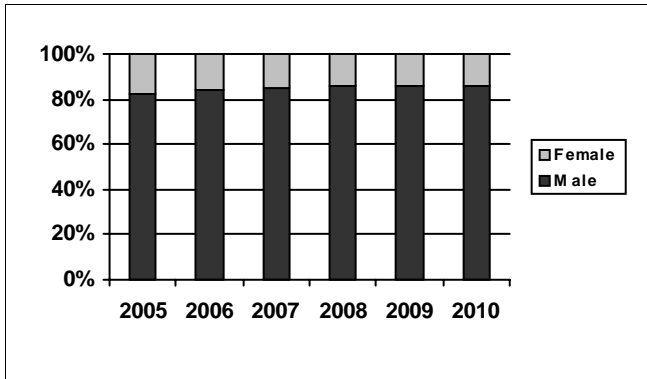
2005	2006	2007	2008	2009
58%	60%	61%	57%	56%

2010 Summary of Pre-Disposition Juvenile Halls

Q1	Q2	Q3	Q4	Average
54%	53%	52%	52%	53%

Fourth Quarter Report, 2010 - Juvenile Hall Data

Gender Distribution in Juvenile Halls

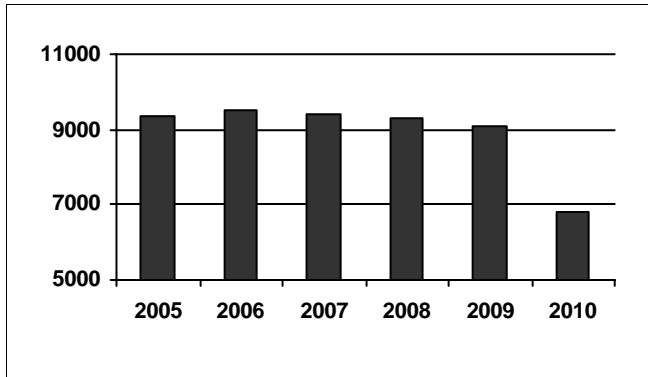


The percentage of male minors in juvenile halls this quarter matched the 1st and 2nd quarter percentages. The 2010 average of 86% has been constant since 2008.

Summary of Males in Juvenile Halls				
2005	2006	2007	2008	2009
82%	84%	85%	86%	86%

2010 Summary of Males in Juvenile Hall				
Q1	Q2	Q3	Q4	Average
86%	86%	87%	86%	86%

Average Number of Juveniles Booked per Month

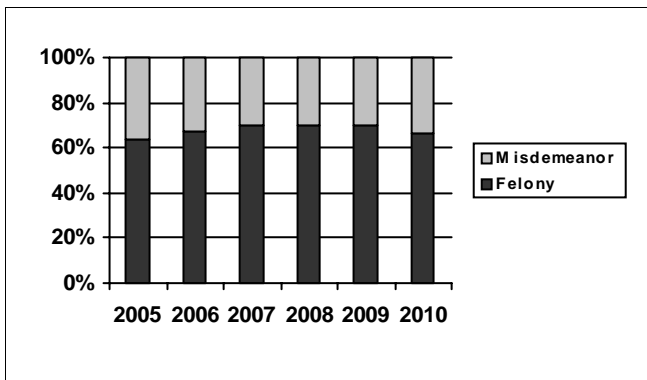


The number of juvenile hall monthly bookings declined each quarter of 2010, resulting in an annual average of 6,802 monthly bookings. The number of monthly bookings declined each year beginning in 2006. The average number of monthly bookings reported in 2010 is 3,058 fewer than in 2002, the year the highest number of monthly bookings was reported.

Summary of Juveniles Booked per Month				
2005	2006	2007	2008	2009
9,353	9,539	9,422	9,325	9,079

2010 Summary of Monthly Bookings				
Q1	Q2	Q3	Q4	Average
7,247	7,093	6,501	6,380	6,802

Distribution of Charge in Juvenile Halls



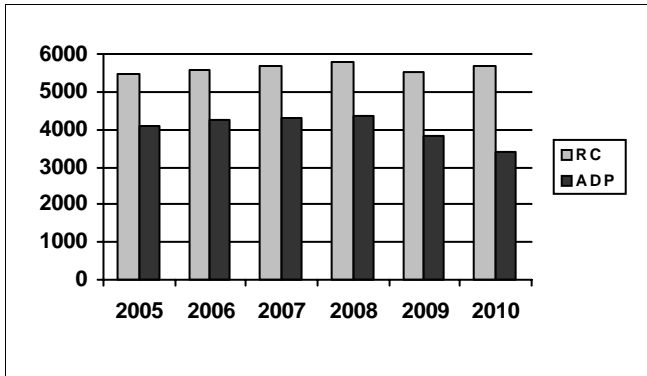
The percentage of felony offenders in juvenile halls was constant each quarter of 2010. That percentage is below the 70% that was reported the three previous years.

Summary of Felony Charges in Juvenile Halls				
2005	2006	2007	2008	2009
64%	67%	70%	70%	70%

2010 Summary of Felony Charge Juvenile Hall				
Q1	Q2	Q3	Q4	Average
66%	66%	66%	66%	66%

Fourth Quarter Report, 2010 - Camp Data

RC and ADP for Camps

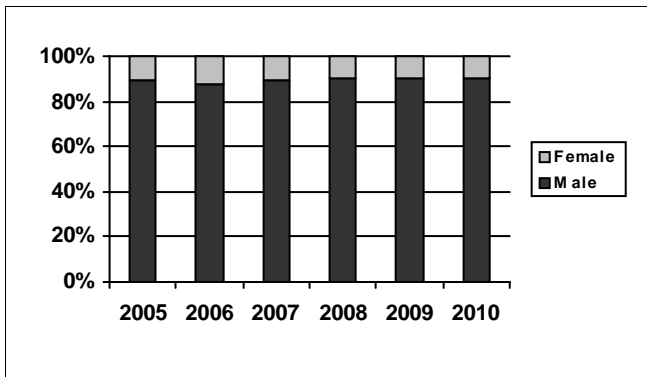


The population of California's probation camps again decreased slightly over the previous quarter. The annual camp ADP in 2010 was 467 fewer than the previous year and 1,174 fewer than in 2002, the highest year reported.

Summary of Camp ADP				
2005	2006	2007	2008	2009
4,097	4,252	4,278	4,338	3,841

2010 Summary of Camp ADP				
Q1	Q2	Q3	Q4	Average
3,422	3,450	3,327	3,297	3,374

Gender Distribution in Camps

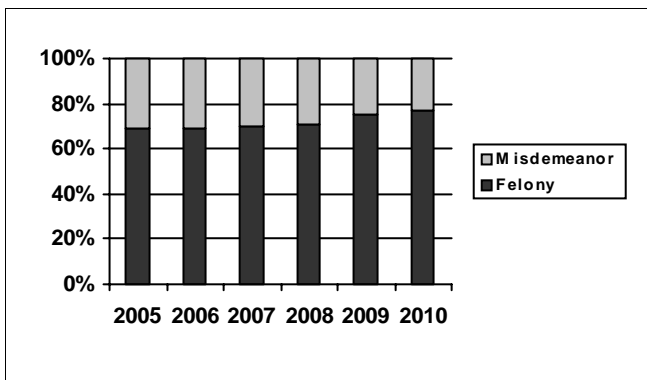


The 4th quarter data showed a rise of 1% in the percentage of male youth committed to camp programs. This is the first increase since 2007.

Summary of Males in Camps				
2005	2006	2007	2008	2009
89%	88%	89%	90%	90%

2010 Summary of Males in Camps				
Q1	Q2	Q3	Q4	Average
90%	90%	90%	91%	90%

Distribution of Charge in Camps



The trend seen of an increasing percentage of camp commitments for felony offenses continued in 2010. In 2002, the first year of the current edition of the JDPS, 67% of youth in camps were there for felony offenses. The 2010 average was a full 10% higher.

Summary of Felonies in Camps				
2005	2006	2007	2008	2009
69%	69%	70%	71%	75%

2010 Summary of Felonies in Camps				
Q1	Q2	Q3	Q4	Average
76%	77%	77%	77%	77%

Instructions for Interpreting the Survey Report

Capacity, Population and ADP Breakout is designed to present the Juvenile Detention Profile Survey results for the major reporting categories.

- **Capacity:** this category presents the Rated Capacity (RC) in terms of the number of beds in juvenile halls and camps/ranches that meet the Corrections Standards Authority (CSA) standards.
- **High One-Day:** each jurisdiction reports for each month in the quarter, the juvenile hall and camp/ranch populations that, together, constituted the highest one-day count of the month.
- **Other:** this category refers to the sum of all juveniles who are receiving custody credit while on home supervision with or without electronic monitoring, or in alternative confinement programs.

Breakout of Juveniles in Detention is designed to present County-specific counts.

- **County-specific counts:** this page identifies the ADP for each county and the percent that county contributes to the total state juvenile detention population. The counties are ranked in descending order based on their percentage of the overall juvenile detention population in the state.

Summary of Survey Results is designed to present all the remaining Juvenile Detention Profile Survey results not already listed.

- **One-Day Snapshot:** the percentages in this section are percentages of the total ADP for juvenile halls, camps/ranches, and other juveniles in the system.
- **Average number of days that one or more facilities in a county exceeded the Rated Capacity:** this value is the result of taking all of the counties "number of days of crowding" and averaging the figures submitted by all the jurisdictions. If a jurisdiction had no crowding days, that jurisdiction was not included in the computation. In other words, the value presented indicates the typical number of crowding days per month experienced by jurisdictions that have had one or more days of crowding in the Fourth Quarter of Calendar Year 2010.
- **Average Length of Stay:** these numbers are averages for all juveniles in each category: 1) "juvenile hall (all releases)" is computed by first taking the mean length of stay for all juveniles released from juvenile halls in a jurisdiction. Next, all the jurisdictions' means are averaged to produce a statewide figure; 2) "juvenile hall to camps/ranches" is computed in the same fashion, but includes only those juveniles released from juvenile hall and placed in a camp or ranch; 3) "juvenile hall to other out-of-home placements" presents the average length of stay for that subset of juveniles.