

FY 2022-23 Community Corrections Partnership Survey

Fresno County

CCP Membership

Kirk Haynes Chief Probation Officer	Sanja Bugay Department of Social Services
Dawn Annino, CEO Presiding Judge or designee	Susan Holt Department of Mental Health
Paul Nerland, CAO County Supervisor or Chief Administrator	Vacant Department of Employment
Lisa Smittcamp District Attorney	Susan Holt Alcohol and Substance Abuse Programs
Antoinette Taillac Public Defender	Jim Yovino Head of the County Office of Education
Margaret Mims Sheriff	Vacant Community-Based Organization
Neil Dadian Chief of Police	Karen Roach Victims' Interests

How often does the CCP meet?

Quarterly

How often does the Executive Committee of the CCP meet?

Quarterly

Does the CCP have subcommittees or working groups?

Yes



Goals, Objectives, and Outcome Measures

FY 2022-23

Goal	Reentry Employment Program Expansion
Objective	Increase participant capacity to 600 participants
Objective	Provide direct employment services to AB109 defendants
Objective	Address one of the highest criminogenic needs of our AB109 supervised population : Community Employment
Outcome Measure	Eliminate barriers to employment services (waiting lists for services)
Outcome Measure	Increase Job Developer intake and assessments at AB109 office
Outcome Measure	Increase job placement and retention by 50%
Progress toward stated goal	We have developed the budget and amendment to the current Memorandum of Understanding and contract with vendor BI Incorporated. We are in the process of scheduling the contract with the Board of Supervisors. CCP approved increased budget for expansion in August of 2022.

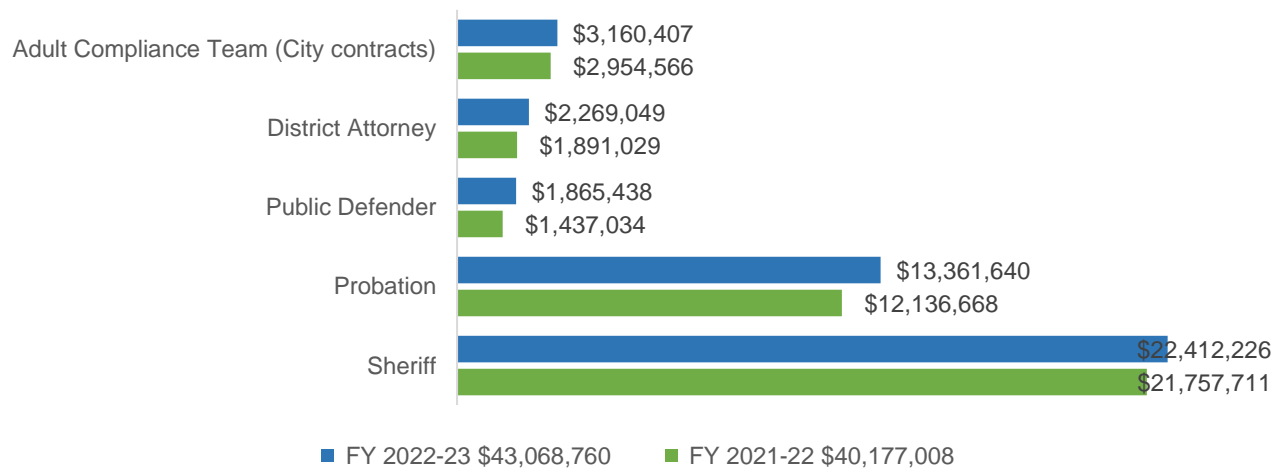
Goal	Program evaluation for CCP-funded programs
Objective	Evaluate CCP funded agencies
Objective	Gauge CCP program effectiveness
Objective	Make data and performance-based decisions on outcomes
Outcome Measure	Reports on 6 individual CCP-funded program
Outcome Measure	Report out to CCP committee on findings
Outcome Measure	Develop individualized outcome measures for programs
Progress Toward Stated Goal	<p>The Research, Evaluation and Technology committee continued the work with Kevin O'Connell and Ryan Souza from California State Association of Counties (CSAC) Support Hub for Criminal Justice Programming and submitted the Scope of Work to evaluate the CCP-funded entities. The Scope of Work was completed and submitted to the CCP Board for review.</p> <p>The committee received approval to move forward in the RFP Process. This project will be demanding and require a significant commitment of time.</p>

FY 2021-2022 and FY 2022-23 Allocation Comparison

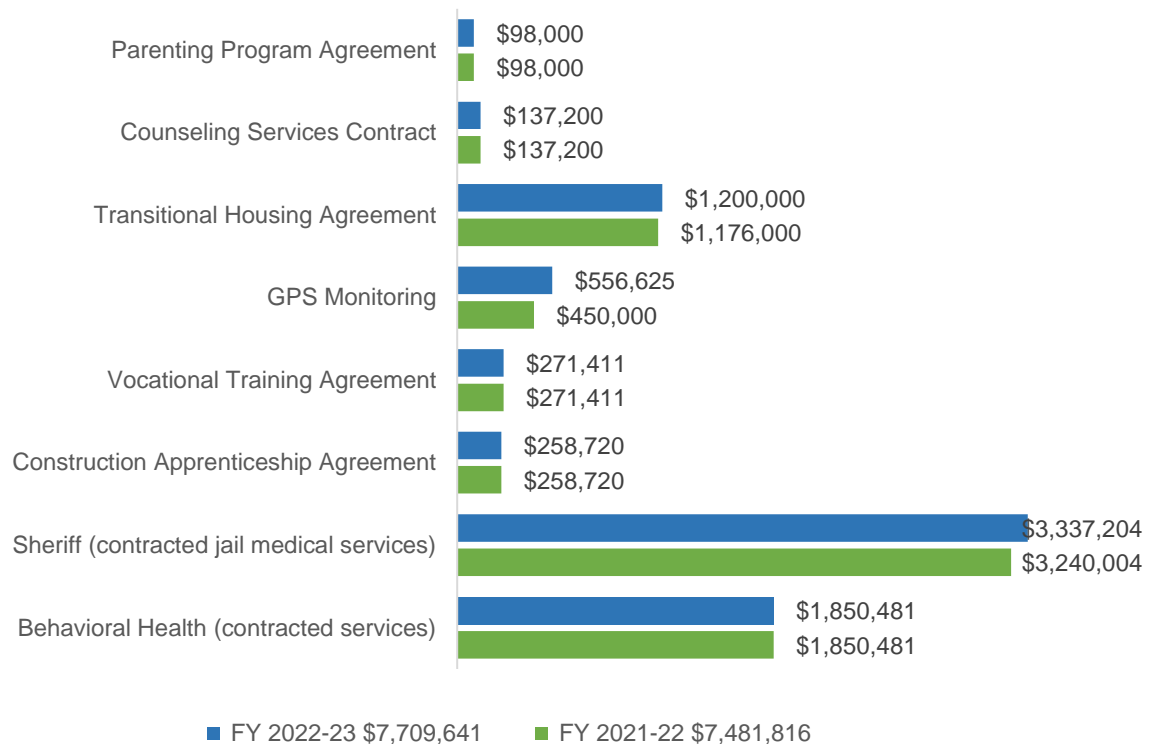
FY 21-22 and 22-23 Allocations



FY 21-22 and 22-23 Allocations to Public Agencies for Programs & Services



FY 21-22 and 22-23 Allocations to Non-Public Agencies for Programs & Services



Optional Questions

Describe the process the CCP uses to determine potential programs and/or services for local implementation using Realignment funds?

The CCP requires agencies or vendors to complete a formal written request for funding with program or services description. This is followed by an oral presentation at a CCP public hearing. The process requires outcome data for future reporting.

Does the county evaluate the effectiveness (as defined locally) of programs and/or services funded with its Public Safety Realignment allocation?

Yes

If yes, how?

Funded CCP programs and services provide all program/service Goal(s) and Outcome(s) measures i.e. demographic data, monitoring, and services rendered for the CCP Board to make informed data driven decisions for yearly budget consideration.

The Fresno County Probation Department has a Quality Control and Research Unit that is responsible for reviewing AB 109 programming, services, and outcomes. The objective of this unit is to ensure that the most current evidence-based practices are utilized. This unit conducts internal reviews of probation assessments and investigates programming and supervision strategies that lead to improved correctional outcomes such as the rehabilitation of offenders and increased public safety.

Does the county consider evaluation results when funding programs and/or services?

Yes

If yes, how?

The goal is considered in outcome summary report results. CCP members may review outcomes and provide feedback and further data when questions are made.

Does the county use BSCC definitions (average daily population, conviction, length of stay, recidivism, and/or treatment program completion rates) when collecting data?

Yes	No	
X		Average daily population
X		Conviction
X		Length of stay
	X	Recidivism
X		Treatment program completion rates

What percentage of the Public Safety Realignment allocation is used for evidence-based programming (as defined locally)?

21% to 40%

We would like to better understand your county's capacity to offer mental health, substance use disorder, behavioral health treatment programs, and/or other services. What type and level of services are now available?

The Probation Department utilizes STRONG-R (Static Risk Offender Needs Guide-Revised) as a evidence-based risk and assessment and automated supervision planning system for adult offenders. It assists with the ability to help personnel predict recidivism by type of crime (violence, property or drug offenses, etc.). The goal is to provide evidence-based supervision strategies to target the offender's most prominent criminogenic needs and build a case plan to support the individual.

An assessment conducted by Turning Point (mental health contracted provider), is completed at the initial reporting date when mental health issues are identified or suspected to correctly identify individuals who may need specialized services to include mental health services, full service partnerships (FSP), specialized housing needs, medication management, therapy, and substance abuse treatment.

The Fresno County Probation Department contracts with the University of Cincinnati Corrections Institute (UCCI) to expand and improve the delivery of evidence-based programming in Adult/AB109 services: enhance staff with core correctional practices and enhance staff ability to develop meaningful case plans.

What challenges does your county face in meeting these program and service needs?

COVID-19 provided several barriers to implementation along with staff retention and in-person trainings. This has improved significantly since the Summer of 2022.

What programmatic changes and/or course corrections have you made in the implementation of Public Safety Realignment that you believe other counties would find helpful?

The utilization of outcome summaries and future implementation of an independent program evaluator enhances the decision-making process to utilizing data and outcome informed measures.

Describe a local best practice or promising program that has produced positive results. If data exists to support the results, please share.

N/A