

JAIL PROFILE SURVEY

2009, 4th QUARTER SURVEY RESULTS

**FACILITIES STANDARDS AND OPERATIONS DIVISION
CORRECTIONS STANDARDS AUTHORITY**

STATE OF CALIFORNIA
600 Bercut Drive
Sacramento, CA 95811
916.445.5073
www.csa.ca.gov

JAIL PROFILE SURVEY

EXPLANATION OF RESULTS

The following link titles contain the Jail Profile Survey results for the fourth quarter of the calendar year 2009. **Quarterly Totals** contains the fourth quarter totals based upon the monthly and quarterly data submitted to us by the participating jurisdictions. The next six (6) link titles show the trend data for variables we have been tracking for the last ten years (**Average Number of Persons Booked**, **Average Length of Stay**, **Average Daily Population**, **Percentage Non-Sentenced**, **Non-Sentenced ADP**, and **Sentenced ADP**). The remainder of this page provides explanations and clarifications of the data presented.

Quarterly Totals link

- Unless otherwise noted, “projected totals” are based upon the average per day for the variable in question. For example, there was an average of 78,416 inmates per day in local jails (excluding Type I’s) during the three-month span of October thru December 2009.
- For some variables (other than ADP), we did not receive complete data from all jurisdictions. In such instances, we used statistical procedures to estimate the statewide total.
- The number for “Bookings” is the average of the monthly totals for October, November, and December.
- For the following variables, the numbers presented are the totals as of the mid-quarter (i.e., November 15, 2009); Pretrial Release, Early Release, 2 and 3 Strikes, Felony Warrants, Misdemeanor Warrants, Juveniles in Custody and Undocumented Aliens.
- “Assaults” is the total number of serious inmate assaults on staff (resulting in a crime report), statewide, during the fourth quarter of calendar year 2009.

Average Number of Persons Booked, **Average Length of Stay**, **Average Daily Population**, **Percentage Non-Sentenced**, **Non-Sentenced ADP**, and **Sentenced ADP** links

- The data in the 10-Year Summary tables are based upon survey data which the Corrections Standards Authority has gathered since the early 1980’s.
- Prior to 1995, yearly averages were reported to the CSA on an annual basis. Yearly averages from 1996 to the present time have been the average of the 12 calendar months.

CORRECTIONS STANDARDS AUTHORITY JAIL PROFILE SURVEY

Reporting Period: October to December, 2009

County Jail Populations

ADP ^a	78,416 ^b
Holding Areas	1,278
Average "Under the Roof" ^c	79,694 ^d
Highest One Day Count	83,583 ^e

Special Use Beds

Medical Beds	1,869
Mental Health Beds	3,456

County Jail Populations

Felony	62,712
Misdemeanor	15,704
Total	78,416
Non-Sentenced Males	47,613
Non-Sentenced Females	6,089
Sentenced Males	20,927
Sentenced Females	3,787
Total	78,416
Maximum Security Inmates	22,546
Medium Security Inmates	35,261
Minimum Security Inmates	20,609
Total	78,416

Released Per Month Due to Lack of Space

Pretrial Release	8,241 ^f
Early Release	5,738 ^f
Total	13,979

Inmates with 2 and 3 Strikes

2 Strike Inmates	1,639 ^g
3 Strike Inmates	770 ^g
Total	2,409

Unservd Warrants

Felony Warrants	232,166 ^g
Misdemeanor Warrants	1,595,276 ^g
Total	1,827,442

Inmates From Other Jurisdictions

Housed on Federal Contract	4,857
Housed on Contract with CDC	2,024
From Other Counties on Contract	70
Awaiting Transport	3,100
Total	10,051

Other Jail Profile Survey Variables

Bookings Per Month	93,787 ^f
Juveniles in Custody	0 ^f
Criminal / Illegal Aliens	11,878
Assaults On Staff	276

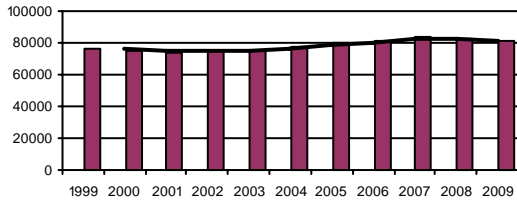
- a. The Average Daily Population for all jurisdictions (excluding Type I's) does not include inmates in holding areas.
- b. Unless otherwise indicated, the numbers reported are the average across the days in the quarter.
- c. "Under the Roof" is the sum of the Average Daily Population plus the average daily number of inmates in Holding Areas.
- d. Totals may not be the exact sum of the subtotals due to rounding.
- e. The sum of all Highest One Day inmate population counts from all jurisdictions.
- f. These data are collected on a monthly basis, this figure is an average of the total numbers collected each month during this quarter.
- g. These data are one-day snapshots collected at the end of the quarter.

Jail Profile Survey

2009

Average Daily Population

10 Year Summary									
1999	2000	2001	2002	2003	2004	2005	2006	2007	2008
76,311	75,044	73,824	75,096	75,243	76,887	79,705	81,104	83,184	82,397



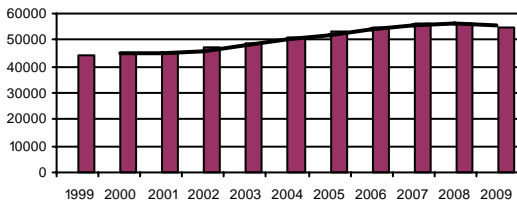
The Average Daily Population (ADP) for the fourth quarter of 2009 reflects a 3.73% decrease from the third quarter of 2009. The ADP for the fourth quarter of 2009 is 4.10% lower than the fourth quarter of 2008 reflecting a continuation of the downtrend in ADP that peaked in 2007. The significant decrease in ADP for the fourth quarter may be attributed to a significant reduction in the number of bookings during the same quarter.

Quarterly Results

	Q1	Q2	Q3	Q4	Average
2008	82,416	82,658	82,748	81,769	82,397
2009	81,138	82,393	81,539	78,416	80,866

Non-sentenced ADP

10 Year Summary									
1999	2000	2001	2002	2003	2004	2005	2006	2007	2008
44,509	44,940	45,187	47,053	49,121	50,715	53,357	54,585	56,571	56,232



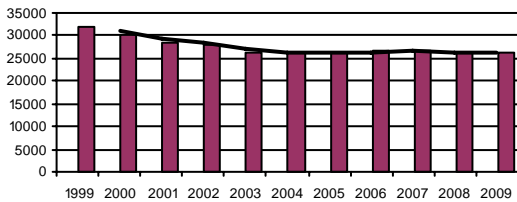
The Non-Sentenced Population ADP was 53,700 for the fourth quarter of 2009. Not only is this a decrease from the third quarter of 2009, it also reflects a decrease of almost 4% from the fourth quarter of 2008.

Quarterly Results

	Q1	Q2	Q3	Q4	Average
2008	56,519	56,196	56,314	55,902	56,232
2009	55,344	54,671	54,656	53,700	54,589

Sentenced ADP

10 Year Summary									
1999	2000	2001	2002	2003	2004	2005	2006	2007	2008
31,802	30,109	28,637	28,043	26,121	26,171	26,347	26,519	26,613	26,165



The Sentenced ADP was 24,715 for the fourth quarter of 2009 reflecting a decrease of almost 8% from the third quarter of 2009 and a decrease of approximately 4.5% from the fourth quarter of 2008.

Quarterly Results

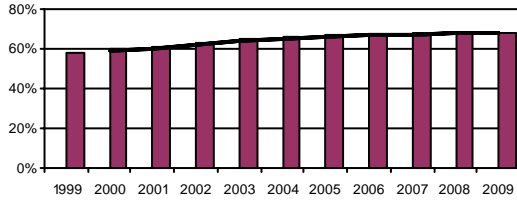
	Q1	Q2	Q3	Q4	Average
2008	25,897	26,462	26,433	25,868	26,165
2009	25,794	27,721	26,882	24,715	26,277

Jail Profile Survey

2009

Percentage Non-sentenced

10 Year Summary									
1999	2000	2001	2002	2003	2004	2005	2006	2007	2008
58%	60%	61%	63%	65%	66%	67%	67%	68%	68%



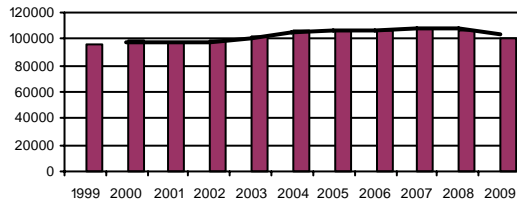
The Percentage of Non-Sentenced inmates increased by 1% in the fourth quarter of 2009 from third quarter to 68%. This percentage remains unchanged from the fourth quarter of 2008.

Quarterly Results

	Q1	Q2	Q3	Q4	Average
2008	69%	68%	68%	68%	68%
2009	68%	66%	67%	68%	68%

Average Number of Persons Booked Per Month

10 Year Summary									
1999	2000	2001	2002	2003	2004	2005	2006	2007	2008
96,684	98,486	97,089	98,603	102,217	106,862	107,120	106,868	108,238	107,086



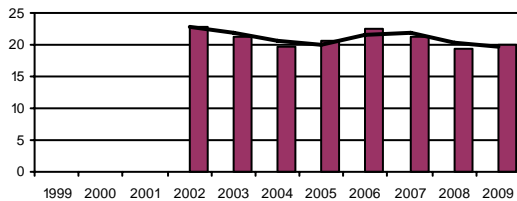
The Average Number of Persons Booked per Month in the fourth quarter of 2009 reflects a 9.65% decrease from the third quarter of 2009 and results in an 8.47% decrease in bookings from the fourth quarter of 2008.

Quarterly Results

	Q1	Q2	Q3	Q4	Average
2008	105,507	108,927	111,446	102,466	107,086
2009	102,516	104,662	103,994	93,787	101,223

Average Length Of Stay

10 Year Summary									
1999	2000	2001	2002	2003	2004	2005	2006	2007	2008
			22.7	21.2	19.8	20.5	22.5	21.4	19.4



The Average Length of Stay of 20.2 days in the fourth quarter of 2009 increased 3.06% over the third quarter of 2009 but reflects a 1.46% decrease from the fourth quarter of 2008.

Quarterly Results

	Q1	Q2	Q3	Q4	Average
2008	19.2	19.1	18.9	20.5	19.4
2009	19.2	20.8	19.6	20.2	20.0

Average Daily Population

Non-sentenced / Sentenced Male / Female

California County Jails - For Months Of October - December 2009

	Non-sentenced						Sentenced						Total
	Male		Female		Total		Male		Female		Total		
	#	%	#	%	#	%	#	%	#	%	#	%	
1. Alameda Sheriff's Dept.	3,223	92%	276	8%	3,500	82%	692	87%	101	13%	792	18%	4,292
2. Amador Sheriff's Dept.	34	76%	11	24%	44	52%	32	79%	8	21%	40	48%	85
3. Butte Sheriff's Dept.	338	88%	47	12%	385	71%	126	81%	29	19%	155	29%	540
4. Calaveras Sheriff's Dept.	45	91%	4	9%	49	65%	20	77%	6	23%	26	35%	75
5. Colusa Sheriff's Dept.	24	87%	4	13%	27	63%	16	100%	0	0%	16	37%	43
6. Contra Costa Sheriff's Dept.	1,062	85%	188	15%	1,250	84%	219	89%	26	11%	245	16%	1,496
7. Del Norte Sheriff's Dept.	61	88%	8	12%	70	61%	33	74%	12	26%	44	39%	114
8. El Dorado Sheriff's Dept.	174	88%	25	12%	199	54%	146	85%	26	15%	172	46%	371
9. Fresno Sheriff's Dept.	1,746	89%	215	11%	1,960	73%	595	83%	123	17%	717	27%	2,678
10. Glenn Sheriff's Dept.	53	89%	7	11%	60	70%	18	71%	8	29%	26	30%	86
11. Humboldt Sheriff's Dept.	219	85%	39	15%	257	72%	88	86%	14	14%	102	28%	360
12. Imperial Sheriff's Dept.	317	91%	30	9%	347	67%	157	90%	17	10%	174	33%	522
13. Inyo Sheriff's Dept.	35	88%	5	12%	39	50%	30	78%	9	22%	39	50%	78
14. Kern Sheriff's Dept.	1,531	88%	200	12%	1,731	76%	412	76%	133	24%	545	24%	2,276
15. Kings Sheriff's Dept.	194	91%	19	9%	212	60%	110	79%	30	21%	140	40%	352
16. Lake Sheriff's Dept.	118	88%	16	12%	135	61%	68	78%	19	22%	86	39%	221
17. Lassen Sheriff's Dept.	30	79%	8	21%	38	51%	29	78%	8	22%	37	49%	75
18. Los Angeles Sheriff's Dept.	10,810	89%	1,309	11%	12,119	67%	5,295	89%	673	11%	5,969	33%	18,088
19. Madera Corrections Dept.	208	85%	36	15%	244	65%	107	82%	23	18%	130	35%	374
20. Marin Sheriff's Dept.	206	91%	21	9%	227	78%	53	83%	11	17%	64	22%	291
21. Mariposa Sheriff's Dept.	22	83%	5	17%	27	60%	14	80%	4	20%	18	40%	45
22. Mendocino Sheriff's Dept.	131	88%	18	12%	149	57%	95	84%	18	16%	113	43%	262
23. Merced Sheriff's Dept.	466	89%	55	11%	521	74%	160	90%	18	10%	178	26%	699
24. Modoc Sheriff's Dept.	10	86%	2	14%	12	66%	5	78%	1	22%	6	34%	18
25. Mono Sheriff's Dept.	8	86%	1	14%	10	51%	8	86%	1	14%	9	49%	19
26. Monterey Sheriff's Dept.	612	89%	79	11%	691	67%	285	86%	48	14%	333	33%	1,024
27. Napa Corrections Dept.	151	88%	21	12%	172	68%	69	83%	14	17%	83	32%	255
28. Nevada Sheriff's Dept.	71	82%	15	18%	87	57%	54	83%	11	17%	65	43%	152
29. Orange Sheriff's Dept.	2,629	90%	307	10%	2,936	58%	1,781	84%	340	16%	2,121	42%	5,057
30. Placer Sheriff's Dept.	307	88%	44	12%	351	64%	167	83%	33	17%	200	36%	551
31. Plumas Sheriff's Dept.	19	81%	4	19%	23	55%	16	82%	3	18%	19	45%	42
32. Riverside Sheriff's Dept.	2,474	91%	247	9%	2,721	78%	631	84%	123	16%	754	22%	3,474
33. Sacramento Sheriff's Dept.	2,250	90%	252	10%	2,502	58%	1,581	88%	217	12%	1,798	42%	4,300
34. San Benito Sheriff's Dept.	73	84%	14	16%	87	72%	31	89%	4	11%	35	28%	122
35. San Bernardino Sheriff's Dept.	3,920	87%	597	13%	4,517	78%	1,051	81%	250	19%	1,301	22%	5,818

Average Daily Population

Non-sentenced / Sentenced Male / Female

California County Jails - For Months Of October - December 2009

	Non-sentenced						Sentenced						Total
	Male		Female		Total		Male		Female		Total		
	#	%	#	%	#	%	#	%	#	%	#	%	
36. San Diego Sheriff's Dept.	2,732	87%	401	13%	3,133	65%	1,370	83%	285	17%	1,655	35%	4,788
37. San Diego Work Furlough	5	82%	1	18%	6	2%	173	76%	56	24%	229	98%	234
38. San Francisco Sheriff's Dept.	1,454	88%	203	12%	1,657	83%	286	82%	63	18%	349	17%	2,006
39. San Joaquin Sheriff's Dept.	737	88%	104	12%	842	61%	457	84%	90	16%	547	39%	1,389
40. San Luis Obispo Sheriff's Dept.	219	87%	34	13%	253	51%	210	85%	36	15%	246	49%	499
41. San Mateo Sheriff's Dept.	601	90%	66	10%	667	64%	328	86%	53	14%	381	36%	1,048
42. Santa Ana Police Dept.	418	87%	60	13%	478	100%	1	100%	0	0%	1	0%	480
43. Santa Barbara Sheriff's Dept.	632	87%	93	13%	725	75%	202	85%	35	15%	237	25%	962
44. Santa Clara Corrections Dept.	2,546	88%	362	12%	2,908	69%	1,105	85%	198	15%	1,303	31%	4,211
45. Santa Cruz Sheriff's Dept.	199	89%	25	11%	224	50%	195	87%	30	13%	225	50%	449
46. Shasta Sheriff's Dept.	148	91%	15	9%	162	75%	40	75%	13	25%	53	25%	215
47. Sierra Sheriff's Dept.	4	80%	1	20%	5	68%	2	86%	0	14%	2	32%	7
48. Siskiyou Sheriff's Dept.	57	83%	11	17%	68	73%	23	92%	2	8%	25	27%	93
49. Solano Sheriff's Dept.	605	88%	81	12%	686	75%	187	83%	38	17%	225	25%	911
50. Sonoma Sheriff's Dept.	482	87%	69	13%	551	55%	372	84%	72	16%	444	45%	995
51. Stanislaus Sheriff's Dept.	775	89%	97	11%	872	67%	334	76%	103	24%	437	33%	1,310
52. Sutter Sheriff's Dept.	146	85%	27	15%	173	74%	40	65%	22	35%	61	26%	234
53. Tehama Sheriff's Dept.	95	86%	16	14%	111	58%	59	74%	21	26%	80	42%	191
54. Trinity Sheriff's Dept.	14	79%	4	21%	17	47%	16	85%	3	15%	19	53%	37
55. Tulare Sheriff's Dept.	641	91%	66	9%	707	46%	670	82%	148	18%	818	54%	1,524
56. Tuolumne Sheriff's Dept.	54	79%	15	21%	68	58%	37	74%	13	26%	50	42%	118
57. Ventura Sheriff's Dept.	890	88%	119	12%	1,009	67%	412	81%	94	19%	507	33%	1,516
58. Ventura Work Furlough	0	0%	0	0%	0	0%	77	74%	28	26%	105	100%	105
59. Yolo Sheriff's Dept.	279	89%	36	11%	315	76%	82	82%	18	18%	100	24%	415
60. Yuba Sheriff's Dept.	308	84%	57	16%	365	85%	56	90%	6	10%	62	15%	427
Statewide	47,612	89%	6,089	11%	53,700	68%	20,927	85%	3,787	15%	24,715	32%	78,415

Jail Populations: Quarter 4, 2008 Versus Quarter 4, 2009

Jurisdiction	Qtr 4, 2008	Qtr 4, 2009	Qtr 4, 2009 Minus Qtr 4, 2008	Qtr 4, 2008 To Qtr 4, 2009 % +/-	% of Total Increase or Decrease	Cum %	Cum Total
San Bernardino Sheriff's Dept.	5,490	5,818	328	6.0%	51.4%	51.41%	328
Butte Sheriff's Dept.	475	540	65	13.7%	10.2%	61.60%	393
San Luis Obispo Sheriff's Dept.	462	499	37	8.0%	5.8%	67.40%	430
Humboldt Sheriff's Dept.	333	359	26	7.8%	4.1%	71.47%	456
Stanislaus Sheriff's Dept.	1,287	1,310	23	1.8%	3.6%	75.08%	479
Tulare Sheriff's Dept.	1,502	1,525	23	1.5%	3.6%	78.68%	502
El Dorado Sheriff's Dept.	351	371	20	5.7%	3.1%	81.82%	522
San Francisco Sheriff's Dept.	1,989	2,006	17	0.9%	2.7%	84.48%	539
Yuba Sheriff's Dept.	413	428	15	3.6%	2.4%	86.83%	554
Tehama Sheriff's Dept.	178	191	13	7.3%	2.0%	88.87%	567
Marin Sheriff's Dept.	279	291	12	4.3%	1.9%	90.75%	579
Nevada Sheriff's Dept.	141	152	11	7.8%	1.7%	92.48%	590
Napa Corrections Dept.	244	255	11	4.5%	1.7%	94.20%	601
Santa Ana Police Dept.	470	479	9	1.9%	1.4%	95.61%	610
Siskiyou Sheriff's Dept.	87	94	7	8.0%	1.1%	96.71%	617
Calaveras Sheriff's Dept.	70	75	5	7.1%	0.8%	97.49%	622
Ventura Work Furlough	99	104	5	5.1%	0.8%	98.28%	627
Santa Cruz Sheriff's Dept.	446	449	3	0.7%	0.5%	98.75%	630
Mariposa Sheriff's Dept.	42	45	3	7.1%	0.5%	99.22%	633
Sierra Sheriff's Dept.	6	8	2	33.3%	0.3%	99.53%	635
Placer Sheriff's Dept.	549	551	2	0.4%	0.3%	99.84%	637
Plumas Sheriff's Dept.	41	42	1	2.4%	0.2%	100.00%	638
Amador Sheriff's Dept.	85	85	0	0.0%	0.0%	100.00%	638
San Benito Sheriff's Dept.	123	122	-1	-0.8%	0.0%	0.03%	-1
Modoc Sheriff's Dept.	21	18	-3	-14.3%	0.1%	0.10%	-4
Lake Sheriff's Dept.	224	221	-3	-1.3%	0.1%	0.18%	-7
Lassen Sheriff's Dept.	81	77	-4	-4.9%	0.1%	0.28%	-11
Trinity Sheriff's Dept.	41	37	-4	-9.8%	0.1%	0.38%	-15
Monterey Sheriff's Dept.	1,029	1,024	-5	-0.5%	0.1%	0.50%	-20
Colusa Sheriff's Dept.	48	43	-5	-10.4%	0.1%	0.63%	-25
Glenn Sheriff's Dept.	92	86	-6	-6.5%	0.2%	0.78%	-31
Yolo Sheriff's Dept.	423	415	-8	-1.9%	0.2%	0.98%	-39
Kings Sheriff's Dept.	361	352	-9	-2.5%	0.2%	1.21%	-48
San Diego Work Furlough	243	234	-9	-3.7%	0.2%	1.43%	-57
Inyo Sheriff's Dept.	86	77	-9	-10.5%	0.2%	1.66%	-66
Mono Sheriff's Dept.	34	19	-15	-44.1%	0.4%	2.04%	-81
Tuolumne Sheriff's Dept.	133	117	-16	-12.0%	0.4%	2.44%	-97
Sonoma Sheriff's Dept.	1,014	995	-19	-1.9%	0.5%	2.92%	-116
Del Norte Sheriff's Dept.	140	115	-25	-17.9%	0.6%	3.54%	-141
Kern Sheriff's Dept.	2,300	2,275	-25	-1.1%	0.6%	4.17%	-166
Sutter Sheriff's Dept.	261	235	-26	-10.0%	0.7%	4.83%	-192
Santa Barbara Sheriff's Dept.	995	962	-33	-3.3%	0.8%	5.66%	-225
Mendocino Sheriff's Dept.	297	262	-35	-11.8%	0.9%	6.54%	-260
Contra Costa Sheriff's Dept.	1,548	1,496	-52	-3.4%	1.3%	7.84%	-312
Riverside Sheriff's Dept.	3,534	3,475	-59	-1.7%	1.5%	9.33%	-371
San Mateo Sheriff's Dept.	1,107	1,048	-59	-5.3%	1.5%	10.81%	-430
Merced Sheriff's Dept.	762	700	-62	-8.1%	1.6%	12.37%	-492
Imperial Sheriff's Dept.	585	522	-63	-10.8%	1.6%	13.95%	-555
Madera Corrections Dept.	440	375	-65	-14.8%	1.6%	15.59%	-620
Solano Sheriff's Dept.	998	910	-88	-8.8%	2.2%	17.80%	-708
San Joaquin Sheriff's Dept.	1,488	1,389	-99	-6.7%	2.5%	20.29%	-807
Shasta Sheriff's Dept.	331	215	-116	-35.0%	2.9%	23.20%	-923
Ventura Sheriff's Dept.	1,673	1,516	-157	-9.4%	3.9%	27.15%	-1,080
Alameda Sheriff's Dept.	4,467	4,292	-175	-3.9%	4.4%	31.55%	-1,255
Santa Clara Corrections Dept.	4,483	4,210	-273	-6.1%	6.9%	38.41%	-1,528
Sacramento Sheriff's Dept.	4,631	4,299	-332	-7.2%	8.3%	46.76%	-1,860
San Diego Sheriff's Dept.	5,129	4,789	-340	-6.6%	8.5%	55.30%	-2,200
Fresno Sheriff's Dept.	3,083	2,678	-405	-13.1%	10.2%	65.49%	-2,605
Los Angeles Sheriff's Dept.	18,513	18,088	-425	-2.3%	10.7%	76.17%	-3,030
Orange Sheriff's Dept.	6,005	5,057	-948	-15.8%	23.8%	100.00%	-3,978
	81,762	78,422	-3,340	Note: Totals subject to slight variation due to rounding			
		Total Increase:	638				
		Total Decrease:	-3,978				

Interpretation of Table:
JAIL POPULATIONS: 4th Qtr Calendar Year '08 versus 4th Qtr Calendar Year '09

This table:

- summarizes the ADP results for the 60 jurisdictions in California reporting data from Type II, III, and IV jails;
- summarizes jurisdiction ADP results for the most recent quarter (Column C);
- compares jurisdiction ADP for the most recent quarter with the same quarter last year (Column B);
- ranks the jurisdictions in terms of gains or losses in ADP from high to low (Column D);
- lists the percentage growth or decline in ADP for each jurisdiction (Column E);
- lists the percentage of the overall State increase or decrease in ADP that is represented by each jurisdiction (Column F);
- lists, by jurisdiction, the cumulative percentage increase and decrease in the State ADP starting with the jurisdiction with the highest percentage of the increase and proceeding to the jurisdiction with the highest percentage of the decrease (Column G);
- lists, by jurisdiction, the cumulative total increase and decrease in the State ADP starting with the jurisdiction with the highest increase and proceeding to the jurisdiction with the biggest decrease (Column H); and,
- lists the jurisdictions that experienced decreases in their ADP as shaded.

Some important conclusions from this table are:

1. The two numbers at the bottom indicate the "total increase" in ADP (in this case 638) and "total decrease" in ADP (-3,978). In other words, the jurisdictions experiencing increases had a total increase of 638 ADP; and the jurisdictions experiencing decreases had a total decrease of 3,978 ADP. Subtracting 638 from 3,978 produces the overall decrease of 3,340 between the fourth quarter of calendar year 2008 and the fourth quarter of calendar year 2009.
2. The San Bernardino County Sheriff's Department ADP increase of 328 is 51.41% of the total increase of 638. Twenty-two jurisdictions had increases (down to Plumas County Sheriff's Department) with one jurisdiction reporting no increase (Amador County Sheriff's Department). When you get to Plumas County Sheriff's Department, you have accounted for 100% of the increases (100% of the cumulative total of 638).
3. Jurisdictions that experienced a decrease in ADP are listed from smallest decrease to largest decrease (San Benito County Sheriff's Department to Orange County Sheriff's Department). When you get to the bottom of the table, you have accounted for 100% of the total decreases of 3,978 inmates.
4. The cumulative percentage of ADP increase for the top four jurisdictions (San Bernardino County Sheriff's Department, Butte County Sheriff's Department, San Luis Obispo County Sheriff's Department and Humboldt County Sheriff's Department) is 71.47%. In other words, four jurisdictions accounted for over 71% of the total ADP increase. Four jurisdictions (San Diego County Sheriff's Department, Fresno County Sheriff's Department, Los Angeles County Sheriff's Department, and Orange County Sheriff's Department) account for over 53% of the decreases.