

JAIL PROFILE SURVEY

2006, 3rd QUARTER SURVEY RESULTS

**FACILITIES STANDARDS AND OPERATIONS DIVISION
CORRECTIONS STANDARDS AUTHORITY**

STATE OF CALIFORNIA
600 Bercut Drive
Sacramento, CA 95814-0815
(916) 445-5073
www.csa.ca.gov

JAIL PROFILE SURVEY

EXPLANATION OF RESULTS

The following link titles contain the Jail Profile Survey results for the third quarter of the calendar year 2006. **Quarterly Totals** contains the third quarter totals based upon the monthly and quarterly data submitted to us by the participating jurisdictions. The next six (6) link titles show the trend data for variables we have been tracking for the last ten years (**Average Number of Persons Booked**, **Average Length of Stay**, **Average Daily Population**, **Percentage Non-Sentenced**, **Non-Sentenced ADP**, and **Sentenced ADP**). The remainder of this page provides explanations and clarifications of the data presented.

Quarterly Totals link

- Unless otherwise noted, “projected totals” are based upon the average per day for the variable in question. For example, there was an average of 81,622 inmates per day in local jails (excluding Type I’s) during the three-month span of July thru September 2006.
- For some variables (other than ADP), we did not receive complete data from all jurisdictions. In such instances, we used statistical procedures to estimate the statewide total.
- The number for “Bookings” is the average of the monthly totals for July, August, and September.
- For the following variables, the numbers presented are the totals as of the mid-quarter (i.e., August 15, 2006); Pretrial Release, Early Release, 2 and 3 Strikes, Felony Warrants, Misdemeanor Warrants, Juveniles in Custody and Undocumented Aliens.
- “Assaults” is the total number of serious inmate assaults on staff (resulting in a crime report), statewide, during the third quarter of calendar year 2006.

Average Number of Persons Booked, **Average Length of Stay**, **Average Daily Population**, **Percentage Non-Sentenced**, **Non-Sentenced ADP**, and **Sentenced ADP** links

- The data in the 10-Year Summary tables are based upon survey data which the Corrections Standards Authority has gathered since the early 1980’s.
- Prior to 1995, yearly averages were reported to the CSA on an annual basis. Yearly averages from 1996 to the present time have been the average of the 12 calendar months. In 1995, the yearly figure reported is the fourth quarter average, since we do not have data from the first three quarters.

CORRECTIONS STANDARDS AUTHORITY JAIL PROFILE SURVEY

Reporting Period: July to September, 2006

County Jail Populations

ADP ^a	81,622 ^b
Holding Areas	2,053
Average "Under the Roof" ^c	83,675 ^d
Highest One Day Count	87,178 ^e

County Jail Populations

Felony	64,740
Misdemeanor	16,882
Total	81,622
Non-Sentenced Males	48,293
Non-Sentenced Females	6,641
Sentenced Males	22,389
Sentenced Females	4,299
Total	81,622
Maximum Security Inmates	24,166
Medium Security Inmates	39,723
Minimum Security Inmates	17,733
Total	81,622

Inmates From Other Jurisdictions

Housed on Federal Contract	3,262
Housed on Contract with CDC	2,830
From Other Counties on Contract	123
Awaiting Transport	2,104
Total	8,319

Special Use Beds

Medical Beds	1,032
Mental Health Beds	3,250

Released Per Month Due to Lack of Space

Pretrial Release	10,318 ^f
Early Release	9,527 ^f
Total	19,845

Inmates with 2 and 3 Strikes

2 Strike Inmates	3,248 ^g
3 Strike Inmates	1,247 ^g
Total	4,495

Unservd Warrants

Felony Warrants	300,640 ^g
Misdemeanor Warrants	2,276,284 ^g
Total	2,576,924

Other Jail Profile Survey Variables

Bookings Per Month	109,752 ^f
Juveniles in Custody	47 ^f
Criminal / Illegal Aliens	9,076
Assaults On Staff	318

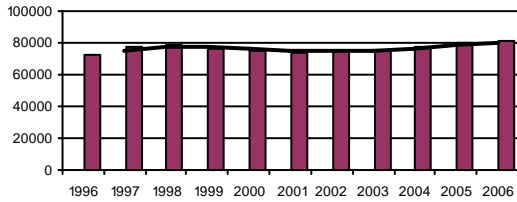
- a. The Average Daily Population for all jurisdictions (excluding Type I's) does not include inmates in holding areas.
- b. Unless otherwise indicated, the numbers reported are the average across the days in the quarter.
- c. "Under the Roof" is the sum of the Average Daily Population plus the average daily number of inmates in Holding Areas.
- d. Totals may not be the exact sum of the subtotals due to rounding.
- e. The sum of all Highest One Day inmate population counts from all jurisdictions.
- f. These data are collected on a monthly basis, this figure is an average of the total numbers collected each month during this quarter.
- g. These data are one-day snapshots collected at the end of the quarter.

Jail Profile Survey

2006

Average Daily Population

10 Year Summary									
1996	1997	1998	1999	2000	2001	2002	2003	2004	2005
72,007	76,938	79,143	76,311	75,044	73,824	75,156	75,340	76,939	79,638



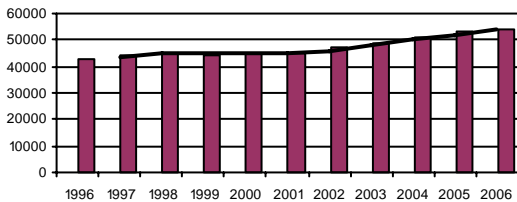
The average daily population (ADP) for the third quarter of 2006 is the highest recorded ADP since the Jail Profile Survey (JPS) began. California jails are on pace to house an annual ADP of over 80,000 inmates, which is also unprecedented.

Quarterly Results

	Q1	Q2	Q3	Q4	Average
2005	77,357	79,222	81,200	80,720	79,638
2006	80,167	80,714	81,622		80,840

Non-sentenced ADP

10 Year Summary									
1996	1997	1998	1999	2000	2001	2002	2003	2004	2005
42,539	44,593	45,303	44,509	44,940	45,187	46,975	49,105	50,677	53,185



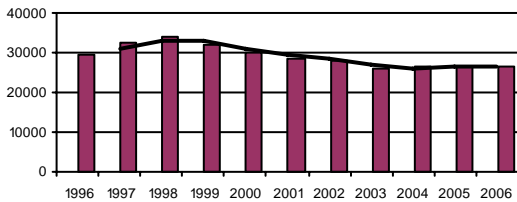
The number of non-sentenced inmates continues to rise as it has markedly since 2001. High numbers of non-sentenced inmates in jail is an indicator of crowded conditions. Lower-level offenders are released to provide housing for inmates awaiting trial on serious, often violent, crimes.

Quarterly Results

	Q1	Q2	Q3	Q4	Average
2005	52,128	52,807	53,958	53,820	53,185
2006	53,638	54,032	54,935		54,206

Sentenced ADP

10 Year Summary									
1996	1997	1998	1999	2000	2001	2002	2003	2004	2005
29,468	32,347	33,841	31,802	30,109	28,637	28,180	26,235	26,262	26,453



The number of sentenced inmates has remained fairly constant over the past several quarters while the non-sentenced population continues to rise (see above). This serves to exacerbate already crowded conditions.

Quarterly Results

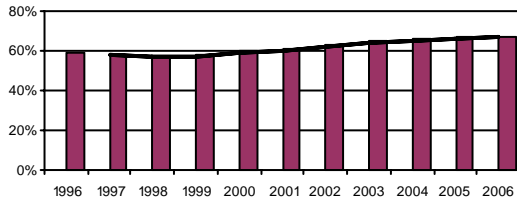
	Q1	Q2	Q3	Q4	Average
2005	25,229	26,415	27,241	26,901	26,453
2006	26,528	26,682	26,688		26,633

Jail Profile Survey

2006

Percentage Non-sentenced

10 Year Summary									
1996	1997	1998	1999	2000	2001	2002	2003	2004	2005
59%	58%	57%	58%	60%	61%	63%	65%	66%	67%



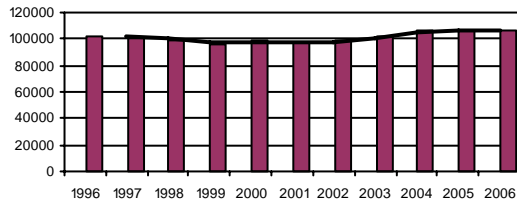
Though the number of non-sentenced inmates increased this quarter, it had little effect on the overall percentage of non-sentenced inmates in custody. On average, there were 900 more non-sentenced inmates in custody in the third quarter than in the second quarter; however, it was not enough to impact overall percentages.

Quarterly Results

	Q1	Q2	Q3	Q4	Average
2005	67%	67%	66%	67%	67%
2006	67%	67%	67%		67%

Average Number of Persons Booked Per Month

10 Year Summary									
1996	1997	1998	1999	2000	2001	2002	2003	2004	2005
101,767	101,210	99,229	96,684	98,486	97,089	98,625	102,217	106,605	106,940



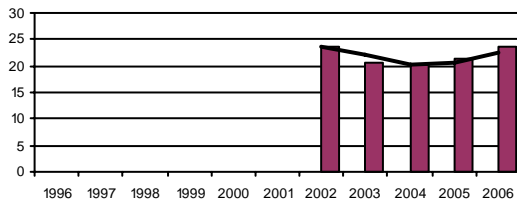
The average number of persons booked per month reached an all-time high this quarter at nearly 110,000.

Quarterly Results

	Q1	Q2	Q3	Q4	Average
2005	105,447	109,741	109,349	103,221	106,940
2006	103,869	106,435	109,752		106,707

Average Length Of Stay

10 Year Summary									
1996	1997	1998	1999	2000	2001	2002	2003	2004	2005
						23.6	20.5	20.2	21.3



Average Length of Stay increased this quarter. Historically, this number has shown a lot of variability, though it has remained in the 20 to 25 day range.

Quarterly Results

	Q1	Q2	Q3	Q4	Average
2005	24.7	22.3	18.7	19.7	21.3
2006	23.5	23.4	24.6		23.8

Average Daily Population

Non-sentenced / Sentenced Male / Female

California County Jails - For Months Of July - September 2006

Jurisdiction	Non-sentenced						Sentenced						Total
	Male		Female		Total		Male		Female		Total		
	#	%	#	%	#	%	#	%	#	%	#	%	
1 . Alameda Sheriff's Dept.	2,821	90%	307	10%	3,129	78%	779	88%	107	12%	887	22%	4,015
2 . Amador Sheriff's Dept.	43	80%	11	20%	54	60%	26	72%	10	28%	36	40%	91
3 . Butte Sheriff's Dept.	249	86%	40	14%	289	55%	191	81%	45	19%	236	45%	525
4 . Calaveras Sheriff's Dept.	37	82%	8	18%	45	61%	27	92%	2	8%	29	39%	74
5 . Colusa Sheriff's Dept.	27	88%	4	12%	30	63%	13	74%	5	26%	18	37%	48
6 . Contra Costa Sheriff's Dept.	911	86%	145	14%	1,057	63%	560	91%	53	9%	613	37%	1,669
7 . Del Norte Sheriff's Dept.	61	89%	8	11%	69	54%	39	68%	18	32%	58	46%	127
8 . El Dorado Sheriff's Dept.	182	87%	27	13%	209	56%	137	84%	25	16%	163	44%	371
9 . Fresno Sheriff's Dept.	2,266	91%	224	9%	2,490	75%	699	84%	134	16%	833	25%	3,323
10 . Glenn Sheriff's Dept.	75	87%	11	13%	85	73%	26	84%	5	16%	31	27%	117
11 . Humboldt Sheriff's Dept.	207	88%	29	12%	236	64%	114	85%	21	15%	134	36%	370
12 . Imperial Sheriff's Dept.	168	85%	31	15%	199	44%	219	88%	30	12%	249	56%	448
13 . Inyo Sheriff's Dept.	30	84%	6	16%	36	40%	42	78%	12	22%	54	60%	90
14 . Kern Sheriff's Dept.	1,480	88%	210	12%	1,690	74%	448	77%	130	23%	579	26%	2,269
15 . Kings Sheriff's Dept.	123	87%	18	13%	141	47%	134	83%	27	17%	161	53%	302
16 . Lake Sheriff's Dept.	142	84%	28	16%	170	59%	99	82%	22	18%	120	41%	290
17 . Lassen Sheriff's Dept.	41	86%	7	14%	48	56%	33	85%	6	15%	39	44%	87
18 . Los Angeles Sheriff's Dept.	11,569	88%	1,515	12%	13,084	72%	4,386	86%	703	14%	5,089	28%	18,173
19 . Madera Corrections Dept.	258	88%	35	12%	293	73%	97	90%	10	10%	107	27%	400
20 . Marin Sheriff's Dept.	223	86%	35	14%	258	84%	40	82%	9	18%	49	16%	307
21 . Mariposa Sheriff's Dept.	21	84%	4	16%	25	51%	19	80%	5	20%	24	49%	48
22 . Mendocino Sheriff's Dept.	151	88%	20	12%	171	64%	79	82%	18	18%	97	36%	268
23 . Merced Sheriff's Dept.	483	90%	52	10%	535	74%	165	87%	24	13%	189	26%	724
24 . Modoc Sheriff's Dept.	14	82%	3	18%	17	54%	11	79%	3	21%	14	46%	31
25 . Mono Sheriff's Dept.	15	88%	2	12%	17	54%	11	75%	4	25%	15	46%	32
26 . Monterey Sheriff's Dept.	760	90%	85	10%	845	70%	294	83%	60	17%	354	30%	1,198
27 . Napa Corrections Dept.	123	89%	15	11%	138	59%	87	91%	9	9%	96	41%	235
28 . Nevada Sheriff's Dept.	76	87%	11	13%	87	54%	61	82%	14	18%	75	46%	161
29 . Orange Sheriff's Dept.	2,782	89%	360	11%	3,142	50%	2,623	84%	513	16%	3,136	50%	6,278
30 . Placer Sheriff's Dept.	332	88%	47	12%	379	64%	181	84%	36	16%	217	36%	596
31 . Plumas Sheriff's Dept.	23	90%	3	10%	26	48%	22	79%	6	21%	28	52%	54
32 . Riverside Sheriff's Dept.	2,622	89%	311	11%	2,933	86%	410	85%	70	15%	480	14%	3,413
33 . Sacramento Sheriff's Dept.	2,571	90%	298	10%	2,869	66%	1,190	81%	276	19%	1,466	34%	4,334
34 . San Benito Sheriff's Dept.	67	88%	9	12%	76	59%	47	89%	6	11%	53	41%	128
35 . San Bernardino Sheriff's Dept.	3,552	87%	519	13%	4,071	74%	1,129	79%	298	21%	1,427	26%	5,499

Average Daily Population

Non-sentenced / Sentenced Male / Female

California County Jails - For Months Of July - September 2006

	<u>Jurisdiction</u>	Non-sentenced						Sentenced						Total
		Male		Female		Total		Male		Female		Total		
		#	%	#	%	#	%	#	%	#	%	#	%	
36 .	San Diego Sheriff's Dept.	2,788	85%	479	15%	3,267	64%	1,495	81%	356	19%	1,851	36%	5,118
37 .	San Diego Work Furlough	0	0%	0	0%	0	0%	152	79%	40	21%	192	100%	192
38 .	San Francisco Sheriff's Dept.	1,311	89%	162	11%	1,472	77%	379	87%	55	13%	433	23%	1,906
39 .	San Joaquin Sheriff's Dept.	703	87%	106	13%	810	55%	535	82%	117	18%	652	45%	1,461
40 .	San Luis Obispo Sheriff's Dept	192	86%	31	14%	224	43%	257	87%	39	13%	296	57%	519
41 .	San Mateo Sheriff's Dept.	535	88%	75	12%	610	54%	446	85%	79	15%	525	46%	1,135
42 .	Santa Ana Police Dept.	340	92%	28	8%	368	97%	11	84%	2	16%	13	3%	381
43 .	Santa Barbara Sheriff's Dept.	537	83%	110	17%	647	65%	295	84%	58	16%	354	35%	1,001
44 .	Santa Clara Corrections Dept.	2,544	88%	352	12%	2,896	67%	1,267	87%	191	13%	1,458	33%	4,354
45 .	Santa Clara Probation Dept.	0	0%	0	0%	0	0%	149	76%	46	24%	194	100%	194
46 .	Santa Cruz Sheriff's Dept.	208	87%	32	13%	240	46%	248	86%	39	14%	287	54%	527
47 .	Shasta Sheriff's Dept.	228	85%	41	15%	269	73%	83	81%	19	19%	102	27%	371
48 .	Sierra Sheriff's Dept.	7	84%	1	16%	8	83%	1	80%	0	20%	2	17%	10
49 .	Siskiyou Sheriff's Dept.	85	92%	7	8%	92	88%	10	78%	3	22%	12	12%	104
50 .	Solano Sheriff's Dept.	698	87%	109	13%	807	74%	234	82%	51	18%	284	26%	1,091
51 .	Sonoma Sheriff's Dept.	543	86%	89	14%	632	58%	391	85%	67	15%	458	42%	1,090
52 .	Stanislaus Sheriff's Dept.	609	75%	206	25%	815	61%	386	75%	129	25%	515	39%	1,330
53 .	Sutter Sheriff's Dept.	149	86%	25	14%	174	66%	69	76%	22	24%	91	34%	265
54 .	Tehama Sheriff's Dept.	95	86%	15	14%	110	60%	58	79%	15	21%	73	40%	183
55 .	Trinity Sheriff's Dept.	14	69%	6	31%	20	46%	21	93%	2	7%	23	54%	42
56 .	Tulare Sheriff's Dept.	746	87%	109	13%	855	58%	560	89%	72	11%	632	42%	1,487
57 .	Tuolumne Sheriff's Dept.	74	81%	18	19%	91	64%	44	85%	8	15%	52	36%	143
58 .	Ventura Sheriff's Dept.	811	89%	104	11%	915	55%	629	84%	123	16%	752	45%	1,667
59 .	Ventura Work Furlough	0	0%	0	0%	0	0%	88	77%	27	23%	115	100%	115
60 .	Yolo Sheriff's Dept.	284	86%	45	14%	329	79%	72	84%	13	16%	86	21%	415
61 .	Yuba Sheriff's Dept.	285	83%	58	17%	343	81%	68	83%	14	17%	83	19%	425
Statewide		48,294	88%	6,641	12%	54,935	67%	22,389	84%	4,299	16%	26,688	33%	81,622

Jail Populations: Quarter 3, 2005 Versus Quarter 3, 2006

Jurisdiction	Qtr 3, 2005	Qtr 3, 2006	Qtr 3, 2006 Minus Qtr 3, 2005	Qtr 3, 2005 To Qtr 3, 2006 % +/-	% of Total Increase or Decrease	Cum %	Cum Total
Sacramento Sheriff's Dept.	3,602	4,335	733	20.3%	31.9%	31.86%	733
Fresno Sheriff's Dept.	3,033	3,324	291	9.6%	12.6%	44.50%	1,024
San Francisco Sheriff's Dept.	1,738	1,906	168	9.7%	7.3%	51.80%	1,192
Riverside Sheriff's Dept.	3,249	3,413	164	5.0%	7.1%	58.93%	1,356
Ventura Sheriff's Dept.	1,519	1,668	149	9.8%	6.5%	65.41%	1,505
Alameda Sheriff's Dept.	3,896	4,015	119	3.1%	5.2%	70.58%	1,624
Tulare Sheriff's Dept.	1,381	1,487	106	7.7%	4.6%	75.18%	1,730
San Joaquin Sheriff's Dept.	1,388	1,462	74	5.3%	3.2%	78.40%	1,804
San Diego Sheriff's Dept.	5,046	5,119	73	1.4%	3.2%	81.57%	1,877
Placer Sheriff's Dept.	534	596	62	11.6%	2.7%	84.27%	1,939
San Mateo Sheriff's Dept.	1,081	1,134	53	4.9%	2.3%	86.57%	1,992
El Dorado Sheriff's Dept.	329	371	42	12.8%	1.8%	88.40%	2,034
Santa Barbara Sheriff's Dept.	959	1,001	42	4.4%	1.8%	90.22%	2,076
Madera Corrections Dept.	368	400	32	8.7%	1.4%	91.61%	2,108
Solano Sheriff's Dept.	1,062	1,091	29	2.7%	1.3%	92.87%	2,137
San Luis Obispo Sheriff's Dept.	492	519	27	5.5%	1.2%	94.05%	2,164
Lake Sheriff's Dept.	266	290	24	9.0%	1.0%	95.09%	2,188
Monterey Sheriff's Dept.	1,181	1,198	17	1.4%	0.7%	95.83%	2,205
Yuba Sheriff's Dept.	410	426	16	3.9%	0.7%	96.52%	2,221
Lassen Sheriff's Dept.	75	88	13	17.3%	0.6%	97.09%	2,234
Butte Sheriff's Dept.	513	525	12	2.3%	0.5%	97.61%	2,246
Siskiyou Sheriff's Dept.	92	104	12	13.0%	0.5%	98.13%	2,258
Stanislaus Sheriff's Dept.	1,321	1,330	9	0.7%	0.4%	98.52%	2,267
Del Norte Sheriff's Dept.	117	126	9	7.7%	0.4%	98.91%	2,276
Tuolumne Sheriff's Dept.	135	143	8	5.9%	0.3%	99.26%	2,284
Mendocino Sheriff's Dept.	263	268	5	1.9%	0.2%	99.48%	2,289
Sierra Sheriff's Dept.	6	10	4	66.7%	0.2%	99.65%	2,293
Colusa Sheriff's Dept.	45	48	3	6.7%	0.1%	99.78%	2,296
Inyo Sheriff's Dept.	87	90	3	3.4%	0.1%	99.91%	2,299
San Benito Sheriff's Dept.	126	128	2	1.6%	0.1%	100.00%	2,301
Plumas Sheriff's Dept.	54	54	0	0.0%	0.0%	100.00%	2,301
Calaveras Sheriff's Dept.	75	74	-1	-1.3%	0.1%	0.05%	-1
Tehama Sheriff's Dept.	185	183	-2	-1.1%	0.1%	0.16%	-3
Ventura Work Furlough	117	115	-2	-1.7%	0.1%	0.27%	-5
Trinity Sheriff's Dept.	45	42	-3	-6.7%	0.2%	0.43%	-8
Amador Sheriff's Dept.	95	91	-4	-4.2%	0.2%	0.64%	-12
Kings Sheriff's Dept.	306	301	-5	-1.6%	0.3%	0.91%	-17
Mono Sheriff's Dept.	37	31	-6	-16.2%	0.3%	1.23%	-23
Humboldt Sheriff's Dept.	377	370	-7	-1.9%	0.4%	1.61%	-30
Modoc Sheriff's Dept.	39	31	-8	-20.5%	0.4%	2.03%	-38
Marin Sheriff's Dept.	315	307	-8	-2.5%	0.4%	2.46%	-46
Kern Sheriff's Dept.	2,280	2,269	-11	-0.5%	0.6%	3.05%	-57
Mariposa Sheriff's Dept.	60	49	-11	-18.3%	0.6%	3.64%	-68
Shasta Sheriff's Dept.	384	371	-13	-3.4%	0.7%	4.33%	-81
Yolo Sheriff's Dept.	429	415	-14	-3.3%	0.7%	5.08%	-95
Santa Clara Probation Dept.	214	195	-19	-8.9%	1.0%	6.10%	-114
Nevada Sheriff's Dept.	185	161	-24	-13.0%	1.3%	7.38%	-138
Santa Ana Police Dept.	413	380	-33	-8.0%	1.8%	9.15%	-171
Napa Corrections Dept.	269	235	-34	-12.6%	1.8%	10.97%	-205
Glenn Sheriff's Dept.	153	116	-37	-24.2%	2.0%	12.95%	-242
Contra Costa Sheriff's Dept.	1,710	1,670	-40	-2.3%	2.1%	15.09%	-282
Sonoma Sheriff's Dept.	1,148	1,090	-58	-5.1%	3.1%	18.19%	-340
Merced Sheriff's Dept.	785	724	-61	-7.8%	3.3%	21.46%	-401
Sutter Sheriff's Dept.	325	264	-61	-18.8%	3.3%	24.72%	-462
Santa Cruz Sheriff's Dept.	614	528	-86	-14.0%	4.6%	29.32%	-548
Imperial Sheriff's Dept.	581	448	-133	-22.9%	7.1%	36.44%	-681
San Diego Work Furlough	328	192	-136	-41.5%	7.3%	43.71%	-817
Orange Sheriff's Dept.	6,452	6,278	-174	-2.7%	9.3%	53.02%	-991
Santa Clara Corrections Dept.	4,549	4,355	-194	-4.3%	10.4%	63.40%	-1,185
San Bernardino Sheriff's Dept.	5,725	5,498	-227	-4.0%	12.1%	75.55%	-1,412
Los Angeles Sheriff's Dept.	18,629	18,172	-457	-2.5%	24.5%	100.00%	-1,869
	81,192	81,624	432	Note: Totals subject to slight variation due to rounding			
			Total Increase:	2,301			
			Total Decrease:	-1,869			

Interpretation of Table:
JAIL POPULATIONS: 3rd Quarter '05 versus 3rd Quarter '06

This table:

- summarizes the ADP results for the 61 jurisdictions in California reporting data from Type II, III, and IV jails;
- summarizes jurisdiction ADP results for the most recent quarter (Column C);
- compares jurisdiction ADP for the most recent quarter with the same quarter last year (Column B);
- ranks the jurisdictions in terms of gains or losses in ADP from high to low (Column D);
- lists the percentage growth or decline in ADP for each jurisdiction (Column E);
- lists the percentage of the overall State increase or decrease in ADP that is represented by each jurisdiction (Column F);
- lists, by jurisdiction, the cumulative percentage increase and decrease in the State ADP starting with the jurisdiction with the highest percentage of the increase and proceeding to the jurisdiction with the highest percentage of the decrease (Column G);
- lists, by jurisdiction, the cumulative total increase and decrease in the State ADP starting with the jurisdiction with the highest increase and proceeding to the jurisdiction with the biggest decrease (Column H); and,
- lists the jurisdictions that experienced decreases in their ADP as shaded.

Some important conclusions from this table are:

1. The two numbers at the bottom indicate the "total increase" in ADP (in this case 2,301) and "total decrease" in ADP (-1,869). In other words, the jurisdictions experiencing increases had a total increase of 2,301 ADP; and the jurisdictions experiencing decreases had a total decrease of 1,869 ADP. Subtracting 1,869 from 2,301 produces the overall increase of 432 between the third quarter of 2005 and the third quarter of 2006.
2. The Sacramento County ADP increase of 733 is 31.9% of the total increase of 2,301. Thirty jurisdictions had increases (down to San Benito County Sheriff's Department) with 1 jurisdiction reporting no increase (Plumas County Sheriff's Department). When you get to Plumas County Sheriff's Department, you have accounted for 100% of the increases (100% of the cumulative total of 2,301).
3. Jurisdictions that experienced a decrease in ADP are listed from smallest decrease to largest decrease (Calaveras County Sheriff's Department to Los Angeles County Sheriff's Department). When you get to the bottom of the table, you have accounted for 100% of the total decreases of 1,869 inmates.
4. The cumulative percentage of ADP increase for the top four jurisdictions (Sacramento County Sheriff's Department to Riverside County Sheriff's Department) is 58.9%. In other words, four jurisdictions accounted for almost 59% of the total ADP increase. Three jurisdictions (Santa Clara County Department of Correction, San Bernardino County Sheriff's Department, and Los Angeles County Sheriff's Department) account for about 56% of the decreases.