



JUVENILE DETENTION PROFILE SURVEY

FIRST QUARTER CALENDAR YEAR 2015
SURVEY RESULTS



EXPLANATION OF RESULTS

The following pages contain the Juvenile Detention Profile Survey (JDPS) results for the First Quarter of Calendar Year 2015. Page 2 contains totals for major categories such as the average daily population (ADP), highest one-day population, gender, and age range of detained minors. Page 3 contains information regarding counties' ADP and rated capacity (RC) breakouts, and page 4 contains information about a wide range of juvenile detention facility issues, including mental health needs, crowding, number of bookings, and average length of stay.

Pages 5, 6, and 7 contain trend information compiled from Calendar Year 2010 through Calendar Year 2015. The trend data is separated into Juvenile Hall related data and Camp related data.

Please keep the following in mind when reviewing this information:

- For overall capacity, crowding (highest one-day population – the count of minors in detention on the day of each county's highest population) and ADP (the average daily detention population for the reporting period), we have complete data from all jurisdictions in the state that operate juvenile detention facilities.
- Each jurisdiction provides us with the average population, computed across all the days in the month, for each of the three months in the quarter. The weighted average across the three months is then computed for each jurisdiction (with the monthly averages weighted by the number of days in the month). The jurisdictions' ADPs are then combined to produce the state's total ADP.
- For some variables (other than ADP), we did not receive complete data from all jurisdictions. In such instances, we used statistical procedures to estimate the statewide total.
- Felony/misdemeanor, gender counts, and age-range breakouts are based upon a one-day snapshot (on the 15th day of the final month of the quarter). These values are used to determine the percentage of the population in each felony/misdemeanor, gender, and age-range category. The percentages are then applied to the total ADP to project the expected ADP in each of the felony/misdemeanor, gender, and age-range categories.
- In addition to the population breakdowns for juvenile halls and camps, the report contains like information for youth who were part of non-facility based, alternative to detention programs. Youth in that category are listed under "Other Detention." Other detention includes home supervision with and without electronic monitoring, day reporting centers, work programs, and other alternatives to detention **for which youth are credited with custody time.**
- ***Please note:***
 - In early 2011, eight regional trainings were held for county reporters and contributors to the JDPS. When interpreting the JDPS results from the second quarter of 2011 forward, please consider that the clarification of variable definitions and calculations which occurred at those trainings may explain some unanticipated differences when compared to prior quarters.
 - Each quarter, every county with juvenile detention facilities submits their data to the Board of State and Community Corrections (BSCC). While we make every effort to review data for accuracy, including contacting individual counties for clarification, the BSCC cannot be responsible for data reporting errors made at the county level.

**Board of State and Community Corrections
 Juvenile Detention Profile Survey - 1st Quarter, 2015
 Overall Capacity, Population and ADP**

Overall Capacity and Population				
	JUVENILE HALL	CAMPS	OTHER	TOTAL
ADP	3,509.0	1,833.6	1,353.9	6,696.5
Percent of Total	52.4%	27.4%	20.2%	100.0%
RC *	8,240.0	4,730.0		12,970.0
High One Day	4,124.0	2,018.0		6,142.0

Gender by Detention Type								
	JUVENILE HALL		CAMPS		OTHER		TOTAL	
GENDER	ADP	%	ADP	%	ADP	%	ADP	%
Male	2,960.6	84.4%	1,673.0	91.2%	1,127.9	83.3%	5,761.6	86.0%
Female	548.4	15.6%	160.6	8.8%	226.0	16.7%	935.0	14.0%
TOTAL	3,509.0	100.0%	1,833.6	100.0%	1,353.9	100.0%	6,696.5	100.0%

Disposition by Gender for Juvenile Halls							
	MALE		FEMALE		TOTAL		
DISPOSITION	Number	%	Number	%	Number	%	
Pre-Disposition	1,660.3	56.1%	314.2	57.3%	1,974.5	56.3%	
Post-Disposition	1,300.3	43.9%	234.2	42.7%	1,534.5	43.7%	
TOTAL	2,960.6	100.0%	548.4	100.0%	3,509.0	100.0%	

Disposition by Gender for Other Detention							
	MALE		FEMALE		TOTAL		
DISPOSITION	Number	%	Number	%	Number	%	
Pre-Disposition	554.0	49.1%	115.6	51.2%	669.7	49.5%	
Post-Disposition	573.9	50.9%	110.4	48.8%	684.3	50.5%	
TOTAL	1,127.9	100.0%	226.0	100.0%	1,353.9	100.0%	

Age Range by Type of Detention (One-Day Snapshot)							
	JUVENILE HALL		CAMPS		TOTAL		
AGE RANGES	Number	%	Number	%	Number	%	
Under 12	5.0	0.1%	0.0	0.0%	5.0	0.1%	
12 to 14	406.0	11.0%	99.0	4.9%	505.0	8.9%	
15 to 17	2,882.0	78.1%	1,464.0	73.0%	4,346.0	76.3%	
18 Over	398.0	10.8%	442.0	22.0%	840.0	14.7%	
TOTAL	3,691.0	100.0%	2,005.0	100.0%	5,696.0	100.0%	

* RC is Rated Capacity which is the number of beds that comply with standards set forth in Title 24, California Code of Regulations.

**County Breakout Report - 1st Quarter, 2015
Facilities and Alternative Detention**

	County	Rated Capacity	Facilities Detention	Other Detention	ADP	Percent of Total	Cumulative Percent
1	Los Angeles	3,554	1,291.3	422.53	1,713.8	25.59%	25.59%
2	San Diego	1,105	433.6	147.82	581.5	8.68%	34.28%
3	Fresno	450	276.4	122.24	398.6	5.95%	40.23%
4	Orange	743	306.7	46.97	353.6	5.28%	45.51%
5	Sacramento	424	193.9	125.56	319.5	4.77%	50.28%
6	Kern	485	308.3	0.41	308.7	4.61%	54.89%
7	San Bernardino	484	273.4	0.00	273.4	4.08%	58.97%
8	Santa Clara	474	147.4	108.24	255.6	3.82%	62.79%
9	Tulare	330	145.4	81.70	227.1	3.39%	66.18%
10	Riverside	466	185.4	22.49	207.9	3.11%	69.28%
11	Contra Costa	390	200.5	0.00	200.5	2.99%	72.28%
12	San Mateo	245	125.1	51.13	176.3	2.63%	74.91%
13	Alameda	463	173.4	0.00	173.4	2.59%	77.50%
14	San Joaquin	224	120.3	0.00	120.3	1.80%	79.30%
15	Stanislaus	218	90.6	27.88	118.5	1.77%	81.07%
16	Monterey	190	94.9	23.44	118.3	1.77%	82.83%
17	Sonoma	164	83.3	30.63	114.0	1.70%	84.54%
18	Santa Barbara	232	95.2	0.00	95.2	1.42%	85.96%
19	Merced	120	48.6	44.43	93.0	1.39%	87.35%
20	Ventura	420	88.0	0.00	88.0	1.31%	88.66%
21	Solano	148	72.0	0.00	72.0	1.08%	89.74%
22	San Francisco	198	70.4	0.00	70.4	1.05%	90.79%
23	Madera	70	49.6	11.57	61.1	0.91%	91.70%
24	Yolo	90	24.2	31.40	55.6	0.83%	92.53%
25	Yuba	120	53.9	0.00	53.9	0.80%	93.33%
26	Kings	85	44.5	9.03	53.5	0.80%	94.13%
27	Butte	120	33.7	0.66	34.4	0.51%	94.65%
28	Del Norte	62	32.7	0.00	32.7	0.49%	95.13%
29	Shasta	90	22.3	9.69	32.0	0.48%	95.61%
30	Humboldt	44	26.5	5.29	31.8	0.47%	96.09%
31	El Dorado	80	19.6	9.69	29.3	0.44%	96.52%
32	San Luis Obispo	45	25.1	0.00	25.1	0.37%	96.90%
33	Santa Cruz	42	22.1	0.00	22.1	0.33%	97.23%
34	Placer	78	19.9	0.00	19.9	0.30%	97.52%
35	Napa	50	19.4	0.00	19.4	0.29%	97.81%
36	Tehama	60	18.9	0.00	18.9	0.28%	98.10%
37	Nevada	60	14.1	4.00	18.1	0.27%	98.37%
38	Marin	40	13.7	4.41	18.1	0.27%	98.64%
39	Lake	30	9.0	7.69	16.7	0.25%	98.89%
40	San Benito	20	12.9	2.34	15.3	0.23%	99.12%
41	Imperial	72	14.6	0.00	14.6	0.22%	99.33%
42	Lassen	40	9.3	2.66	12.0	0.18%	99.51%
43	Siskiyou	40	10.7	0.00	10.7	0.16%	99.67%
44	Mendocino	43	9.4	0.00	9.4	0.14%	99.81%
45	Glenn	22	9.0	0.00	9.0	0.13%	99.95%
46	Inyo	14	3.5	0.00	3.5	0.05%	100.00%
47	Trinity	22	0.0	0.00	0.0	0.00%	100.00%
48	Mariposa	4	0.0	0.00	0.0	0.00%	100.00%
49	Tuolumne	0	0.0	0.00	0.0	0.00%	100.00%
		12,970	5,342.6	1,353.9	6,696.5	100.00%	

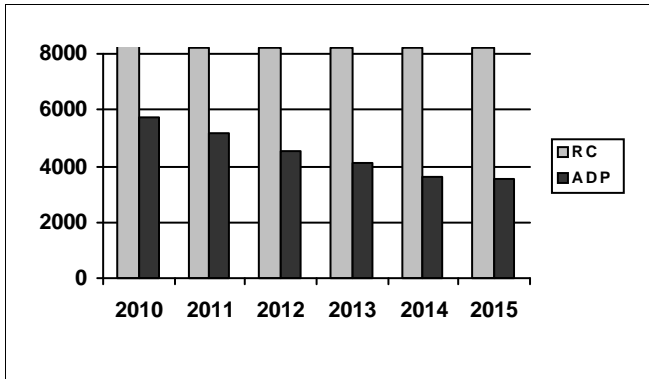
*ADP on County Breakout Report may not equal ADP on other Summary Reports due to rounding

Juvenile Detention Profile Survey

1st Quarter Report 2015	Average Daily Population									
	Rated Capacity	One Day Snapshot				Average Daily Population				
		Misdemeanor		Felony		Pre-Disposition		Post-Disposition		Total ADP
	Male	Female	Male	Female	Male	Female	Male	Female		
Juvenile Halls	8,240.0	16.4%	5.1%	28.4%	3.2%	1,660.3	314.2	1,300.3	234.2	3,509.0
Camps / Ranches	4,730.0	6.7%	1.9%	18.4%	1.5%			1,673.0	160.6	1,833.6
Other Juveniles in the System		Male	Female	Male	Female	Male	Female	Male	Female	Total ADP
Juveniles on home supervision with electronic monitoring		3.4%	0.9%	6.5%	1.2%	380.8	80.9	376.6	72.4	910.8
Juveniles on home supervision without electronic monitoring		1.5%	0.5%	2.1%	0.3%	172.2	34.7	114.8	27.7	349.4
Juveniles alternative confinement programs		0.4%	0.3%	1.0%	0.1%	1.0	0.0	82.5	10.3	93.8
Grand Totals		28.5%	8.8%	56.4%	6.3%	2,214.4	429.8	3,547.2	505.2	6,696.5
Mental Health Snapshot										
Number of open mental health cases this day									3,657.4	
Number of juveniles receiving psychotropic medication									1,334.8	
Crowding										
Average daily population of juveniles in other jurisdictions DUE TO LACK OF SPACE									0.0	
Number of juveniles released early DUE TO LACK OF SPACE									0.0	
Average number of days that one or more facilities in a county exceeded the Rated Capacity									0.0	
Average Bookings Per Month										
Number of Juvenile Hall bookings/admissions									4,288.5	
Number of bookings for weapon-related offenses									340.2	
Number of 601 bookings									8.0	
Number of 777 bookings									877.3	
Number of direct file {WIC 602(b) and 707(d)} bookings									51.7	
Final Month of the Quarter (One-Day Snapshot)										
Detained for 707b Offense									721.0	
Awaiting placement									392.0	
Awaiting transport to a camp									202.0	
Awaiting transfer to Youth Authority									57.0	
Court commitments to juvenile hall (Ricardo M)									484.0	
Found unfit per 707.01 WIC									38.0	
Direct files to Adult Court-602(b) and 707(d) WIC									290.0	
Hospitalized outside detention facility for MEDICAL CARE									4.0	
Hospitalized outside detention facility for MENTAL HEALTH CARE									6.0	
Believed to be criminal illegal aliens									90.5	
Average Length of Stay										
Juvenile Hall (all releases)									25.1	
Juvenile Hall to Camps									33.8	
Juvenile Hall to other out-of-home placements (i.e. group homes or foster homes)									47.0	
Juvenile Hall who were found unfit (per juvenile court)									604.8	
Juvenile Hall who were direct filings to adult court									253.1	
Camps (all releases)									137.9	
Cumulative Total for the Quarter										
Detention Behavior					Juvenile Halls		Camps / Ranches		Other Detention	
Assaults by juveniles on staff					24.3		7.0		0.0	
Escapes					3.0		27.0		4.0	
Suicide Attempts					24.3		7.0		0.0	
Suicides					0.0		0.0		0.0	

First Quarter Report, 2015 - Juvenile Hall Data

Rated Capacity RC and ADP for Juvenile Halls

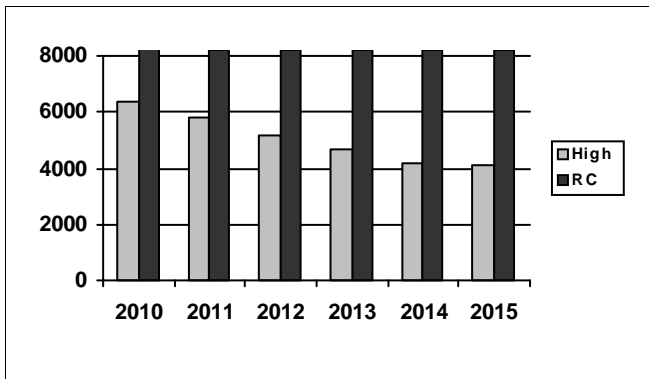


Since 2007, California's Juvenile Halls have experienced declining populations. At an ADP of 3,509, the first quarter of 2015 is consistent with the fourth quarter of 2014 and marks a 50% decrease from the annual 2006 ADP (7,017).

Summary of Juvenile Hall ADP				
2010	2011	2012	2013	2014
5,721	5,137	4,546	4,103	3,639

2015 Summary of Juvenile Hall ADP			
Q1			Average
3,509			3,509

Juvenile Hall Highest One-Day Population and RC

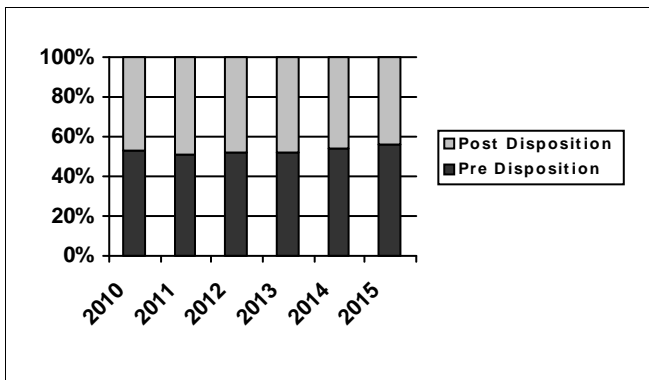


After the highest one day population hit a historic low in the fourth quarter of 2014 (4,068), the first quarter of 2015 showed a slight increase. Even with this increase, Juvenile Halls continue to be at a maximum of 50% of their current rated capacity.

Summary of Juvenile Hall Highest One Day				
2010	2011	2012	2013	2014
6,386	5,795	5,154	4,687	4,179

2015 Summary of Highest One-Day Population			
Q1			Average
4,124			4,124

Pre-Disposition in Juvenile Halls



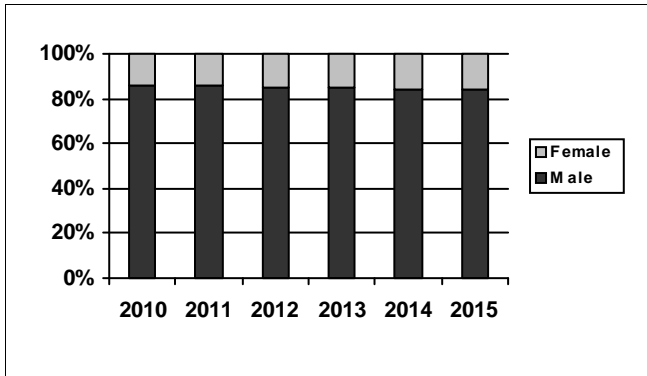
Since 2012, the percentage of youth in Juvenile Halls with a pre-disposition status continues to increase. For the first quarter of 2015, this percentage reached 56%, which is similar to the 2009 annual percentage.

Summary of Pre-Disposition in Juvenile Halls				
2010	2011	2012	2013	2014
53%	51%	52%	52%	54%

2015 Summary of Pre-Disposition Juvenile Halls			
Q1			Average
56%			56%

First Quarter Report, 2015 - Juvenile Hall Data

Gender Distribution in Juvenile Halls

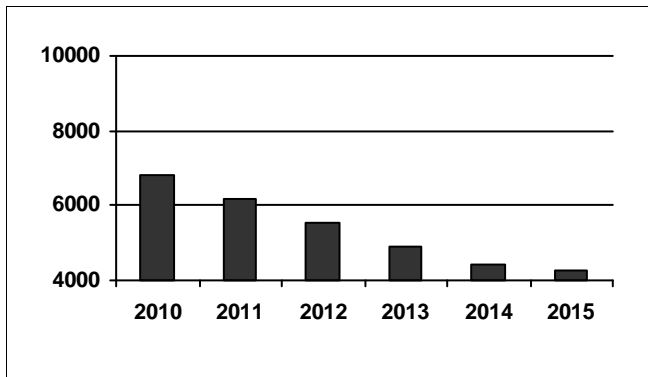


Continuing the trend from 2014, female youth still account for 16% of the total Juvenile Hall population in the first quarter of 2015.

Summary of Males in Juvenile Halls				
2010	2011	2012	2013	2014
86%	86%	85%	85%	84%

2015 Summary of Males in Juvenile Hall			
Q1			Average
84%			84%

Average Number of Juveniles Booked per Month

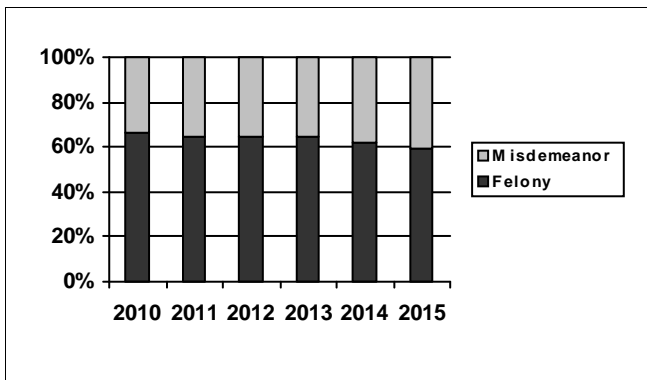


Similar to what has been seen between the fourth quarter of a given year and the first quarter of the next year (i.e., slight increases between quarters), 2015 shows the same trend in the average number of bookings between quarters. There were 259 more bookings in the first quarter of 2015 than in the fourth quarter of 2014, but the average number of bookings in the first quarter still reflects a decrease as compared to the 2014 annual average.

Summary of Juveniles Booked per Month				
2010	2011	2012	2013	2014
6,802	6,202	5,556	4,881	4,401

2015 Summary of Monthly Bookings			
Q1			Average
4,288			4,288

Distribution of Charge in Juvenile Halls



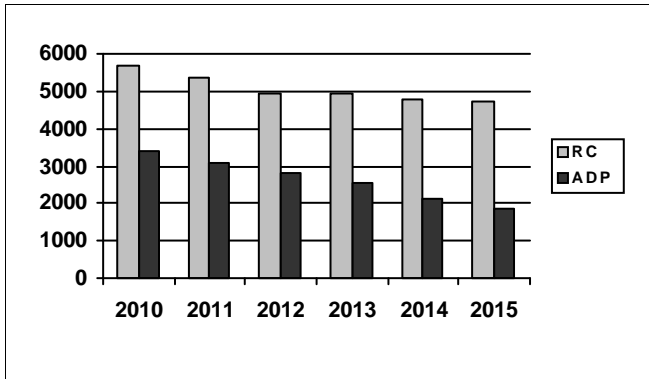
Since 2010 felonious charges continuously declined amongst the Juvenile Hall population. Once trending at 70% annually, the first quarter of 2015 was the first time the percentage of those charged with a felony fell below 60% of the total Juvenile Hall population since 2000.

Summary of Felony Charges in Juvenile Halls				
2010	2011	2012	2013	2014
66%	65%	65%	65%	62%

2015 Summary of Felony Charge Juvenile Hall			
Q1			Average
59%			59%

First Quarter Report, 2015 - Camp Data

RC and ADP for Camps

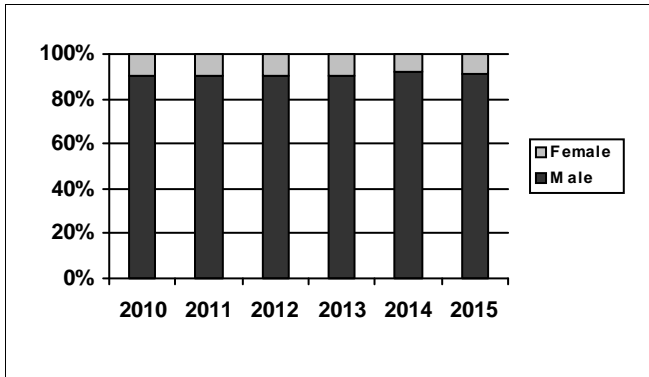


The average daily population in Camps continues to decline. Camp ADP is 144 less than the previous quarter and currently represents 39% of the rated capacity.

Summary of Camp ADP				
2010	2011	2012	2013	2014
3,374	3,105	2,811	2,524	2,140

2015 Summary of Camp ADP			
Q1			Average
1,834			1,834

Gender Distribution in Camps

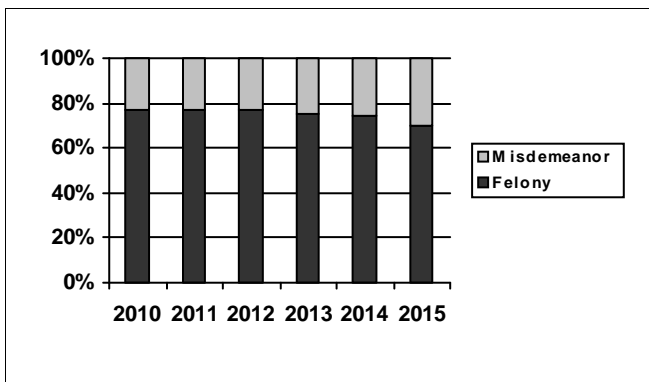


After ending 2014 with an annual average of 92% male and 8% female, the first quarter of 2015 began making its way back down (91% male and 9% female) toward the six-year norm of 90% male and 10% female.

Summary of Males in Camps				
2010	2011	2012	2013	2014
90%	90%	90%	90%	92%

2015 Summary of Males in Camps			
Q1			Average
91%			91%

Distribution of Charge in Camps



Similar to the changing distribution of charge experienced in California Juvenile Halls, Camps are also seeing a decrease in the population charged with a felony and an increase in the misdemeanor population. From 2010 to 2012, those charged with a felony made up 77% of the total Camp population. Since then, this percentage has slowly decreased, with the first quarter of 2015 having only 70% charged with a felony and 30% charged with a misdemeanor.

Summary of Felonies in Camps				
2010	2011	2012	2013	2014
77%	77%	77%	75%	74%

2015 Summary of Felonies in Camps			
Q1			Average
70%			70%

INSTRUCTIONS FOR INTERPRETING THE SURVEY REPORT

The **Overall Capacity, Population and ADP page** is designed to present the JDPS results for the major reporting categories.

- **Capacity:** this category presents the RC in terms of the number of beds in juvenile halls and camps/ranches that meet the BSCC standards.
- **High One Day:** for each month in the quarter, each jurisdiction reports the juvenile hall and camp/ranch populations that together constituted the highest one-day count of the month.
- **Other:** this category refers to the sum of all juveniles who are receiving custody credit while on home supervision, with or without electronic monitoring, or are in alternative confinement programs.

The **County Breakout Report page** is designed to present county-specific information.

- **County comparison:** this page identifies the ADP for each county and the percent that county contributes to the total state juvenile detention population. The counties are ranked in descending order based on their percentage of the overall juvenile detention population in the state.

The **JDPS additional information page** is designed to present all the remaining JDPS results not already listed.

- **One Day Snapshot:** the percentages in this section are percentages of the total ADP for juvenile halls, camps/ranches, and other juveniles in the system.
- **Average number of days that one or more facilities in a county exceeded the RC:** this value is the result of taking all of the counties “number of days of crowding” and averaging the figures submitted by all the jurisdictions. If a jurisdiction had no crowding days, that jurisdiction was not included in the computation. In other words, the value presented indicates the typical number of crowding days per month experienced by jurisdictions that have had one or more days of crowding in the First Quarter of Calendar Year 2015.
- **Average Length of Stay:** these numbers are averages for all juveniles in each category:
 - 1) “Juvenile Hall (all releases)” is computed by first taking the mean length of stay for all juveniles released from juvenile halls in a jurisdiction. Next, all the jurisdictions’ means are averaged to produce a statewide figure.
 - 2) “Juvenile Hall to Camps [ranches]” is computed in the same fashion, but includes only those juveniles released from juvenile hall and placed in a camp or ranch.
 - 3) “Juvenile Hall to other out-of-home placements (i.e. group homes or foster homes)” presents the average length of stay for that subset of juveniles.