

JUVENILE DETENTION PROFILE SURVEY



**FIRST QUARTER
2010**

Corrections Standards Authority
Facilities Standards and Operations Division
600 Bercut Drive
Sacramento CA 95811
(916) 445-5073
www.csa.ca.gov

JUVENILE DETENTION PROFILE SURVEY

EXPLANATION OF RESULTS

The following link titles contain the Juvenile Detention Profile Survey results for the First Quarter of Calendar Year 2010. **Capacity, Population and ADP Breakout** contains totals for major categories such as Highest One-Day Population, Average Daily Population (ADP), gender, and the age range of detained minors. **Breakout of Juveniles in Detention** contains information regarding counties' ADP and Rated Capacity (RC) breakouts and **Summary of Survey Results** contains information about a wide range of juvenile detention facility issues including crowding, mental health needs, average length of stay, and number of bookings.

Juvenile Hall Data – Part 1 & 2, and Camp Data contains trend information compiled from 2005 through the first quarter of calendar year 2010. The trend data is separated into Juvenile Hall related data and Camp related data.

Please keep the following in mind when reviewing this information:

- For Overall Capacity, Crowding (highest one-day population-the count of minors in detention on the day of each county's highest population) and ADP (the average daily detention population for the reporting period), we have complete data from all jurisdictions in the state that operate juvenile detention facilities.
- Each jurisdiction provides us with the average population, computed across all the days in the month, for each of the three months in the quarter. The weighted average across the three months is then computed for each jurisdiction (with the monthly averages weighted by the number of days in the month). The jurisdictions ADPs are then combined to produce the state's total ADP.
- For some variables (other than ADP), we did not receive complete data from all jurisdictions. In such instances, we used statistical procedures to estimate the statewide total.
- Felony/misdemeanor, gender counts, and age-range breakouts are based upon a one-day snapshot (on the 15th day of the final month of the quarter). These values are used to determine the percentage of the population in each felony/misdemeanor, gender, and age category. The percentages are then applied to the Total ADP to project the expected ADP in each of the felony/misdemeanor, gender, and age-range categories.
- ***Please note:*** *Each quarter, every county with juvenile detention facilities submits their data to the CSA. While we make every effort to review data for accuracy, including contacting individual counties for clarification, CSA cannot be responsible for data reporting errors made at the county level.*

California Corrections Standards Authority
Juvenile Detention Profile Survey - 1st Quarter, 2010
Overall Capacity, Population and ADP

Overall Capacity and Population							
	JUVENILE HALL		CAMPS		OTHER	TOTAL	
ADP	5,964.1		3,422.0		2,579.6	11,965.6	
Percent of Total	49.8%		28.6%		21.6%	100.0%	
RC *	8,200.0		5,869.0			14,069.0	
High One Day	6,697.7		3,498.0			10,195.7	

Gender by Detention Type								
	JUVENILE HALL		CAMPS		OTHER		TOTAL	
GENDER	ADP	%	ADP	%	ADP	%	ADP	%
Male	5,135.2	86.1%	3,079.0	90.0%	2,135.3	82.8%	10,349.5	86.5%
Female	828.9	13.9%	343.0	10.0%	444.3	17.2%	1,616.2	13.5%
TOTAL	5,964.1	100.0%	3,422.0	100.0%	2,579.6	100.0%	11,965.6	100.0%

Disposition by Gender for Juvenile Halls							
	MALE		FEMALE		TOTAL		
DISPOSITION	Number	%	Number	%	Number	%	
Pre-Disposition	2,755.9	53.7%	481.5	58.1%	3,237.4	54.3%	
Post-Disposition	2,379.3	46.3%	347.4	41.9%	2,726.7	45.7%	
TOTAL	5,135.2	100.0%	828.9	100.0%	5,964.1	100.0%	

Disposition by Gender for Other Detention							
	MALE		FEMALE		TOTAL		
DISPOSITION	Number	%	Number	%	Number	%	
Pre-Disposition	895.6	41.9%	208.8	47.0%	1,104.4	42.8%	
Post-Disposition	1,239.7	58.1%	235.5	53.0%	1,475.2	57.2%	
TOTAL	2,135.3	100.0%	444.3	100.0%	2,579.6	100.0%	

Age Range by Type of Detention (One-Day Snapshot)							
	JUVENILE HALL		CAMPS		TOTAL		
AGE RANGES	Number	%	Number	%	Number	%	
Under 12	6.0	0.1%	1.0	0.0%	7.0	0.1%	
12 to 14	701.0	11.4%	169.0	5.0%	870.0	9.1%	
15 to 17	4,850.0	79.2%	2,477.0	73.1%	7,327.0	77.0%	
18 _Over	567.0	9.3%	743.0	21.9%	1,310.0	13.8%	
TOTAL	6,124.0	100.0%	3,390.0	100.0%	9,514.0	100.0%	

* RC is Rated Capacity which is the number of beds that comply with standards set forth in Title 24, California Code of Regulations.

**County Breakout Report - 1st Quarter, 2010
Facilities and Alternative Detention**

	County	Rated Capacity	Facilities Detention	Other Detention	ADP	Percent of Total	Cumulative Percent
1	Los Angeles	4,017	2,740.0	703.03	3,443.1	28.77%	28.77%
2	San Diego	1,105	797.5	262.13	1,059.6	8.86%	37.63%
3	Orange	953	599.8	75.33	675.1	5.64%	43.27%
4	Santa Clara	550	399.2	205.03	604.2	5.05%	48.32%
5	Sacramento	395	294.7	273.02	567.7	4.74%	53.07%
6	Alameda	463	290.4	226.66	517.0	4.32%	57.39%
7	Kern	475	378.7	42.69	421.4	3.52%	60.91%
8	Contra Costa	290	292.5	118.31	410.9	3.43%	64.34%
9	Riverside	582	358.2	18.24	376.4	3.15%	67.49%
10	Fresno	590	372.8	0.00	372.8	3.12%	70.60%
11	San Bernardino	620	366.8	0.00	366.8	3.07%	73.67%
12	San Mateo	274	209.8	111.72	321.6	2.69%	76.36%
13	Tulare	330	168.0	88.30	256.3	2.14%	78.50%
14	San Francisco	234	110.9	120.18	231.1	1.93%	80.43%
15	Stanislaus	158	148.8	70.47	219.2	1.83%	82.26%
16	Santa Barbara	252	183.4	0.00	183.4	1.53%	83.80%
17	Monterey	206	157.3	24.13	181.5	1.52%	85.31%
18	San Joaquin	224	179.3	0.00	179.3	1.50%	86.81%
19	Ventura	280	173.1	0.00	173.1	1.45%	88.26%
20	Merced	120	106.4	58.31	164.7	1.38%	89.63%
21	Sonoma	188	100.8	40.95	141.8	1.18%	90.82%
22	Solano	148	96.9	22.07	118.9	0.99%	91.81%
23	Yolo	90	78.6	10.83	89.4	0.75%	92.56%
24	El Dorado	80	57.0	15.66	72.7	0.61%	93.17%
25	Madera	75	61.3	10.08	71.3	0.60%	93.76%
26	Kings	209	65.4	0.00	65.4	0.55%	94.31%
27	Placer	58	34.3	19.44	53.7	0.45%	94.76%
28	Colusa	162	51.4	0.00	51.4	0.43%	95.19%
29	Yuba	120	50.9	0.00	50.9	0.43%	95.61%
30	Butte	60	49.1	1.72	50.8	0.42%	96.04%
31	San Luis Obispo	45	40.5	9.22	49.7	0.42%	96.45%
32	Shasta	101	32.2	16.62	48.8	0.41%	96.86%
33	Humboldt	44	38.5	10.28	48.8	0.41%	97.27%
34	Napa	50	43.3	0.00	43.3	0.36%	97.63%
35	Del Norte	62	33.6	0.00	33.6	0.28%	97.91%
36	Santa Cruz	42	20.2	9.41	29.7	0.25%	98.16%
37	Imperial	72	29.1	0.00	29.1	0.24%	98.40%
38	Marin	40	21.7	6.21	27.9	0.23%	98.63%
39	Mendocino	43	25.9	0.00	25.9	0.22%	98.85%
40	Nevada	30	22.9	0.00	22.9	0.19%	99.04%
41	Lake	40	16.3	2.66	19.0	0.16%	99.20%
42	San Benito	20	13.9	2.38	16.2	0.14%	99.34%
43	Inyo	14	15.0	0.00	15.0	0.13%	99.46%
44	Glenn	22	14.8	0.00	14.8	0.12%	99.59%
45	Siskiyou	20	11.7	1.03	12.7	0.11%	99.69%
46	Trinity	28	12.7	0.00	12.7	0.11%	99.80%
47	Tehama	40	12.0	0.00	12.0	0.10%	99.90%
48	Lassen	40	8.4	0.34	8.8	0.07%	99.97%
49	Tuolumne	0	0.0	2.76	2.8	0.02%	99.99%
50	Amador	0	0.0	0.42	0.4	0.00%	100.00%
51	Mariposa	4	0.3	0.00	0.3	0.00%	100.00%
52	Mono	4	0.0	0.00	0.0	0.00%	100.00%
53	Sierra	0	0.0	0.00	0.0	0.00%	100.00%
		14,069	9,386.0	2,579.6	11,965.6	100.00%	

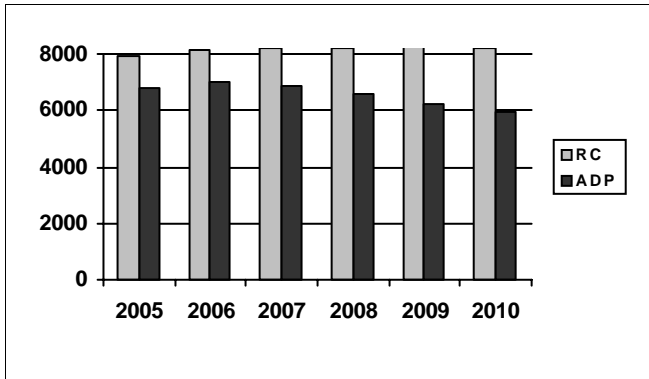
*ADP on County Breakout Report may not equal ADP on other Summary Reports due to rounding

Juvenile Detention Profile Survey

1st Quarter Report 2010			One Day Snapshot				Average Daily Population				
	Rated Capacity	Misdemeanor		Felony		Pre-Disposition		Post-Disposition		Total ADP	
		Male	Female	Male	Female	Male	Female	Male	Female		
Juvenile Halls	8,200.0	13.5%	3.6%	29.4%	3.5%	2,755.9	481.5	2,379.3	347.4	5,964.1	
Camps / Ranches	5,869.0	5.9%	1.2%	20.1%	1.8%			3,079.0	343.0	3,422.0	
Other Juveniles in the System		Male	Female	Male	Female	Male	Female	Male	Female	Total ADP	
Juveniles on home supervision with electronic monitoring		3.9%	1.0%	7.0%	1.3%	607.9	131.2	730.7	144.7	1,614.5	
Juveniles on home supervision without electronic monitoring		1.7%	0.6%	2.9%	0.6%	260.8	74.6	273.7	66.3	675.4	
Juveniles alternative confinement programs		0.6%	0.1%	1.2%	0.1%	26.9	3.0	235.2	24.5	289.7	
Grand Totals		25.6%	6.4%	60.7%	7.3%	3,651.5	690.3	6,698.0	925.9	11,965.6	
Mental Health Snapshot											
Number of open mental health cases this day									3,749.0		
Number of juveniles receiving psychotropic medication									1,389.1		
Crowding											
Average daily population of juveniles in other jurisdictions DUE TO LACK OF SPACE									23.2		
Number of juveniles released early DUE TO LACK OF SPACE									104.6		
Average number of days that one or more facilities in a county exceeded the Rated Capacity									5.0		
Average Bookings Per Month											
Number of Juvenile Hall bookings/admissions									7,246.6		
Number of bookings for weapon-related offenses									503.5		
Number of 601 bookings									41.1		
Number of 777 bookings									1,560.1		
Number of direct file {WIC 602(b) and 707(d)} bookings									59.7		
Final Month of the Quarter (One-Day Snapshot)											
Detained for 707b Offense									1,115.3		
Awaiting placement									572.4		
Awaiting transport to a camp									333.0		
Awaiting transfer to Youth Authority									59.0		
Court commitments to juvenile hall (Ricardo M)									739.8		
Found unfit per 707.01 WIC									116.8		
Direct files to Adult Court-602(b) and 707(d) WIC									387.9		
Hospitalized outside detention facility for MEDICAL CARE									4.0		
Hospitalized outside detention facility for MENTAL HEALTH CARE									6.0		
Believed to be criminal illegal aliens									84.6		
Average Length of Stay											
Juvenile Hall (all releases)									25.0		
Juvenile Hall to Camps									59.6		
Juvenile Hall to other out-of-home placements (i.e. group homes or foster homes)									46.6		
Juvenile Hall who were found unfit (per juvenile court)									435.2		
Juvenile Hall who were direct filings to adult court									308.8		
Camps (all releases)									114.1		
Cumulative Total for the Quarter											
Detention Behavior						Juvenile Halls	Camps / Ranches	Other Detention			
Assaults by juveniles on staff						42.0	7.0	0.0			
Escapes						9.0	104.0	2.0			
Suicide Attempts						51.9	4.0	0.0			
Suicides						0.0	0.0	0.0			

First Quarter Report, 2010 - Juvenile Hall Data

Rated Capacity RC and ADP for Juvenile Halls



The average daily population of California juvenile halls has declined annually since 2006.

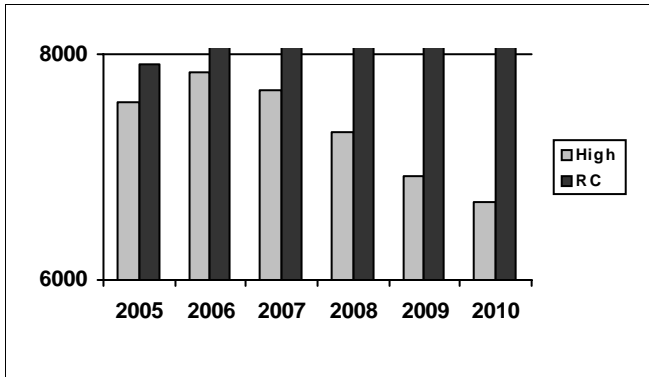
Summary of Juvenile Hall ADP

2005	2006	2007	2008	2009
6,818	7,017	6,858	6,614	6,197

2010 Summary of Juvenile Hall ADP

Q1	Average
5,964	5,964

Juvenile Hall Highest One-Day Population and RC



Reflecting the trend in a decreasing average daily population, the high day population of juvenile halls is also declining.

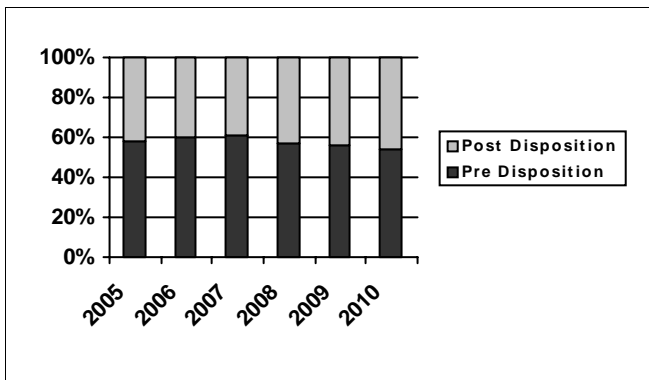
Summary of Juvenile Hall Highest One Day

2005	2006	2007	2008	2009
7,575	7,837	7,686	7,317	6,914

2010 Summary of Highest One-Day Population

Q1	Average
6,698	6,698

Pre-Disposition in Juvenile Halls



The percentage of youth in juvenile halls who are pre-disposition continues to decline. JDPS reports and facility managers believe that this reflects an increasing reliance on a juvenile hall commitment as a dispositional option for re-aligned (non 707b) offenders.

Summary of Pre-Disposition in Juvenile Halls

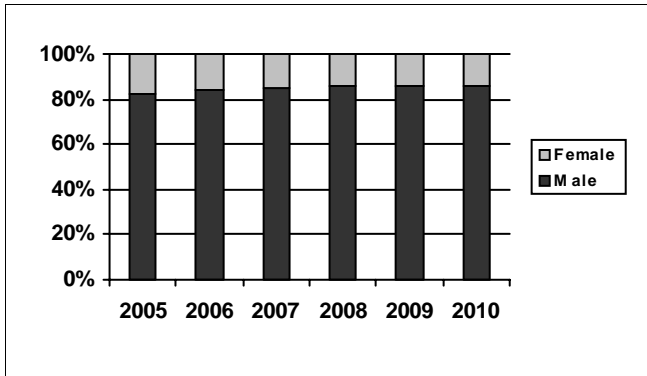
2005	2006	2007	2008	2009
58%	60%	61%	57%	56%

2010 Summary of Pre-Disposition Juvenile Halls

Q1	Average
54%	54%

First Quarter Report, 2010 - Juvenile Hall Data

Gender Distribution in Juvenile Halls



The percentage of male minors in juvenile halls has increased slightly, but steadily since 2003.

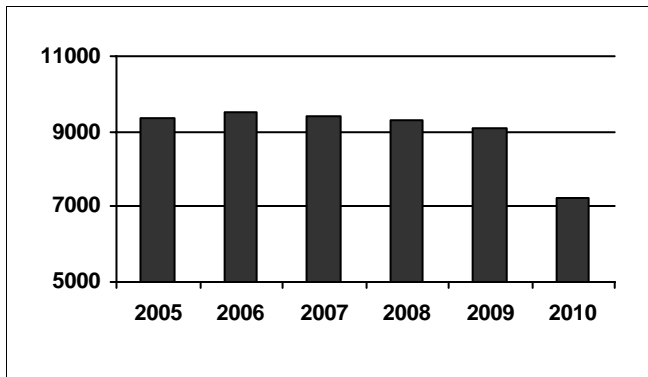
Summary of Males in Juvenile Halls

2005	2006	2007	2008	2009
82%	84%	85%	86%	86%

2010 Summary of Males in Juvenile Hall

Q1	Average
86%	86%

Average Number of Juveniles Booked per Month



2010 marked the largest decrease in the number of juvenile hall bookings in the history of the survey. Reporters and facility managers attribute this to a decrease in the crime rate combined with wide use of local detention criteria which discourages law enforcement from bringing youth who do not require secure detention to the facility for booking.

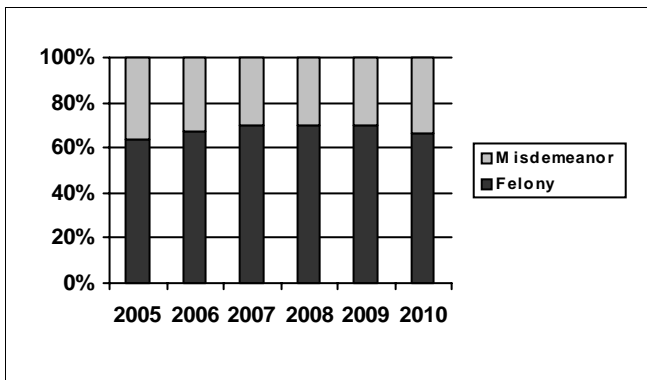
Summary of Juveniles Booked per Month

2005	2006	2007	2008	2009
9,353	9,539	9,422	9,325	9,079

2010 Summary of Monthly Bookings

Q1	Average
7,247	7,247

Distribution of Charge in Juvenile Halls



Over time, the percentage of felony offenders in the juvenile hall in the first quarter has been between 64 and 70%. Data so far this year is lower than any year since 2005.

Summary of Felony Charges in Juvenile Halls

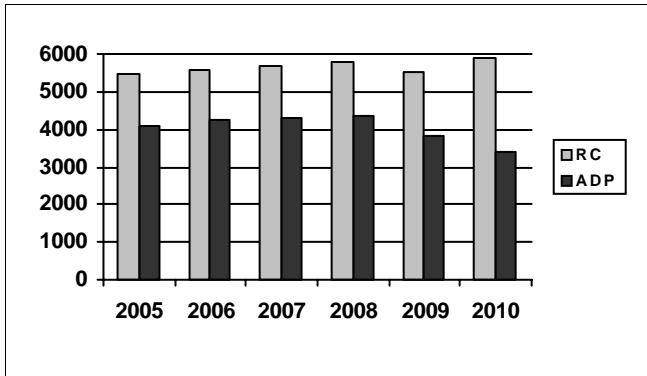
2005	2006	2007	2008	2009
64%	67%	70%	70%	70%

2010 Summary of Felony Charge Juvenile Hall

Q1	Average
66%	66%

First Quarter Report, 2010 - Camp Data

RC and ADP for Camps

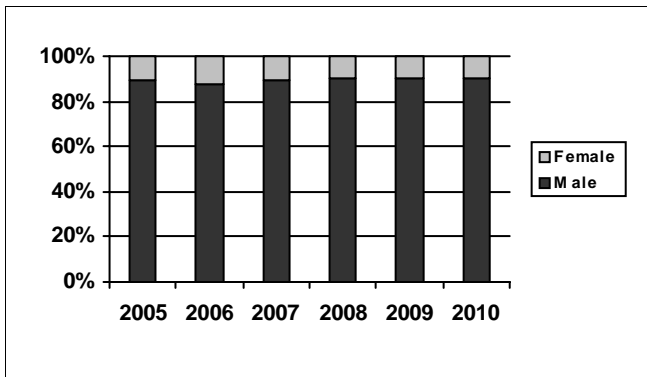


The population of California's probation camps continues to decline.

Summary of Camp ADP				
2005	2006	2007	2008	2009
4,097	4,252	4,278	4,338	3,841

2010 Summary of Camp ADP				
Q1				Average
3,422				3,422

Gender Distribution in Camps

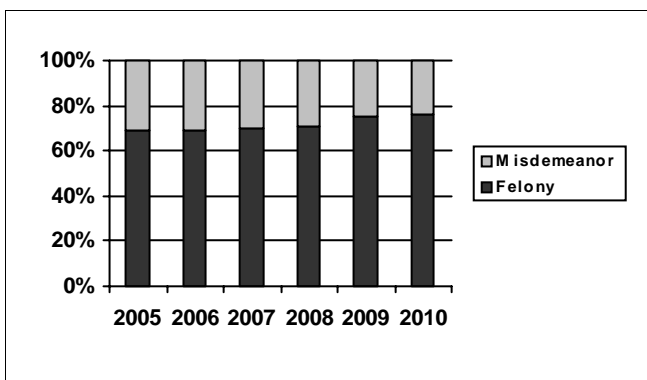


Data continues to reflect the small percentage (10 – 12%) of girls in camp programs. The percentage of girls in juvenile halls has historically been higher than in camps.

Summary of Males in Camps				
2005	2006	2007	2008	2009
89%	88%	89%	90%	90%

2010 Summary of Males in Camps				
Q1				Average
90%				90%

Distribution of Charge in Camps



The percentage of felony offenders continues to increase in camp settings. JDPS reporters and facility managers attribute this rise to the 2007 realignment of non-707(b) offenders to the counties, and the programs developed for that population through Youthful Offender Block Grant funding.

Summary of Felonies in Camps				
2005	2006	2007	2008	2009
69%	69%	70%	71%	75%

2010 Summary of Felonies in Camps				
Q1				Average
76%				76%

Instructions for Interpreting the Survey Report

Capacity, Population and ADP Breakout is designed to present the Juvenile Detention Profile Survey results for the major reporting categories.

- **Capacity:** this category presents the Rated Capacity (RC) in terms of the number of beds in juvenile halls and camps/ranches that meet the Corrections Standards Authority (CSA) standards.
- **High One-Day:** each jurisdiction reports for each month in the quarter, the juvenile hall and camp/ranch populations that, together, constituted the highest one-day count of the month.
- **Other:** this category refers to the sum of all juveniles who are receiving custody credit while on home supervision with or without electronic monitoring, or in alternative confinement programs.

Breakout of Juveniles in Detention is designed to present County-specific counts.

- **County-specific counts:** this page identifies the ADP for each county and the percent that county contributes to the total state juvenile detention population. The counties are ranked in descending order based on their percentage of the overall juvenile detention population in the state.

Summary of Survey Results is designed to present all the remaining Juvenile Detention Profile Survey results not already listed.

- **One-Day Snapshot:** the percentages in this section are percentages of the total ADP for juvenile halls, camps/ranches, and other juveniles in the system.
- **Average number of days that one or more facilities in a county exceeded the Rated Capacity:** this value is the result of taking all of the counties "number of days of crowding" and averaging the figures submitted by all the jurisdictions. If a jurisdiction had no crowding days, that jurisdiction was not included in the computation. In other words, the value presented indicates the typical number of crowding days per month experienced by jurisdictions that have had one or more days of crowding in the First Quarter of Calendar Year 2010.
- **Average Length of Stay:** these numbers are averages for all juveniles in each category: 1) "juvenile hall (all releases)" is computed by first taking the mean length of stay for all juveniles released from juvenile halls in a jurisdiction. Next, all the jurisdictions' means are averaged to produce a statewide figure; 2) "juvenile hall to camps/ranches" is computed in the same fashion, but includes only those juveniles released from juvenile hall and placed in a camp or ranch; 3) "juvenile hall to other out-of-home placements" presents the average length of stay for that subset of juveniles.