

# JUVENILE DETENTION PROFILE SURVEY



**FIRST QUARTER  
2009**

Corrections Standards Authority  
Facilities Standards and Operations Division  
600 Bercut Drive  
Sacramento CA 95811  
(916) 445-5073  
[www.csa.ca.gov](http://www.csa.ca.gov)

# JUVENILE DETENTION PROFILE SURVEY

## EXPLANATION OF RESULTS

The following link titles contain the Juvenile Detention Profile Survey results for the First Quarter of Calendar Year 2009. **Capacity, Population and ADP Breakout** contains totals for major categories such as Highest One-Day Population, Average Daily Population (ADP), gender, and the age range of detained minors. **Breakout of Juveniles in Detention** contains information regarding counties' ADP and Rated Capacity (RC) breakouts and **Summary of Survey Results** contains information about a wide range of juvenile detention facility issues including crowding, mental health needs, average length of stay, and number of bookings.

***Juvenile Hall Data – Part 1 & 2, and Camp Data*** contains trend information compiled from 2004 through the first quarter of 2009. The trend data is separated into Juvenile Hall related data and Camp related data.

Please keep the following in mind when reviewing this information:

- For Overall Capacity, Crowding (highest one-day population-the count of minors in detention on the day of each county's highest population) and ADP (the average daily detention population for the reporting period), we have complete data from all jurisdictions in the state that operate juvenile detention facilities.
- Each jurisdiction provides us with the average population, computed across all the days in the month, for each of the three months in the quarter. The weighted average across the three months is then computed for each jurisdiction (with the monthly averages weighted by the number of days in the month). The jurisdictions ADPs are then combined to produce the state's total ADP.
- For some variables (other than ADP), we did not receive complete data from all jurisdictions. In such instances, we used statistical procedures to estimate the statewide total.
- Felony/misdemeanor, gender counts, and age-range breakouts are based upon a one-day snapshot (on the 15<sup>th</sup> day of the final month of the quarter). These values are used to determine the percentage of the population in each felony/misdemeanor, gender, and age category. The percentages are then applied to the Total ADP to project the expected ADP in each of the felony/misdemeanor, gender, and age-range categories.
- ***Please note:*** Each quarter, every county with juvenile detention facilities submits their data to the CSA. While we make every effort to review data for accuracy, including contacting individual counties for clarification, CSA cannot be responsible for data reporting errors made at the county level.

**California Corrections Standards Authority**  
**Juvenile Detention Profile Survey - 1st Quarter, 2009**  
**Overall Capacity, Population and ADP**

<b>Overall Capacity and Population</b>								
	JUVENILE HALL		CAMPS		OTHER		TOTAL	
ADP	6,384.1		4,026.3		2,828.0		13,238.4	
Percent of Total	48.2%		30.4%		21.4%		100.0%	
RC *	8,298.3		5,804.3				14,102.6	
High One Day	7,091.0		4,090.0				11,181.0	
<b>Gender by Detention Type</b>								
	JUVENILE HALL		CAMPS		OTHER		TOTAL	
GENDER	ADP	%	ADP	%	ADP	%	ADP	%
Male	5,448.4	85.3%	3,659.2	90.9%	2,311.0	81.7%	11,418.6	86.3%
Female	935.7	14.7%	367.1	9.1%	517.0	18.3%	1,819.8	13.7%
<b>TOTAL</b>	<b>6,384.1</b>	<b>100.0%</b>	<b>4,026.3</b>	<b>100.0%</b>	<b>2,828.0</b>	<b>100.0%</b>	<b>13,238.4</b>	<b>100.0%</b>
<b>Disposition by Gender for Juvenile Halls</b>								
	MALE		FEMALE		TOTAL			
DISPOSITION	Number	%	Number	%	Number	%	Number	%
Pre-Disposition	3,046.3	55.9%	543.9	58.1%	3,590.2	56.2%		
Post-Disposition	2,402.1	44.1%	391.8	41.9%	2,793.9	43.8%		
<b>TOTAL</b>	<b>5,448.4</b>	<b>100.0%</b>	<b>935.7</b>	<b>100.0%</b>	<b>6,384.1</b>	<b>100.0%</b>		
<b>Disposition by Gender for Other Detention</b>								
	MALE		FEMALE		TOTAL			
DISPOSITION	Number	%	Number	%	Number	%	Number	%
Pre-Disposition	860.4	37.2%	217.5	42.1%	1,077.8	38.1%		
Post-Disposition	1,450.6	62.8%	299.5	57.9%	1,750.2	61.9%		
<b>TOTAL</b>	<b>2,311.0</b>	<b>100.0%</b>	<b>517.0</b>	<b>100.0%</b>	<b>2,828.0</b>	<b>100.0%</b>		
<b>Age Range by Type of Detention (One-Day Snapshot)</b>								
	JUVENILE HALL		CAMPS		TOTAL			
AGE RANGES	Number	%	Number	%	Number	%	Number	%
Under 12	9.0	0.1%	0.0	0.0%	9.0	0.1%		
12 to 14	830.0	12.6%	247.0	6.2%	1,077.0	10.2%		
15 to 17	5,222.0	79.4%	2,998.0	75.0%	8,220.0	77.8%		
18 _Over	514.0	7.8%	752.0	18.8%	1,266.0	12.0%		
<b>TOTAL</b>	<b>6,575.0</b>	<b>100.0%</b>	<b>3,997.0</b>	<b>100.0%</b>	<b>10,572.0</b>	<b>100.0%</b>		

\* RC is Rated Capacity which is the number of beds that comply with standards set forth in Title 24, California Code of Regulations.

**County Breakout Report - 1st Quarter, 2009  
Facilities and Alternative Detention**

	<b>County</b>	<b>Rated Capacity</b>	<b>Facilities Detention</b>	<b>Other Detention</b>	<b>ADP</b>	<b>Percent of Total</b>	<b>Cumulative Percent</b>
1	Los Angeles	4,144	2,990.2	754.36	3,744.5	28.29%	28.29%
2	San Diego	1,055	816.5	285.07	1,101.5	8.32%	36.61%
3	Orange	921	818.9	68.69	887.5	6.70%	43.31%
4	Sacramento	496	428.2	336.36	764.6	5.78%	49.09%
5	Alameda	463	359.0	251.27	610.2	4.61%	53.70%
6	Santa Clara	550	399.5	171.36	570.8	4.31%	58.01%
7	Kern	473	439.3	39.55	478.9	3.62%	61.62%
8	Fresno	650	470.2	0.00	470.2	3.55%	65.18%
9	Contra Costa	290	277.7	152.89	430.6	3.25%	68.43%
10	San Bernardino	620	388.6	0.00	388.6	2.94%	71.36%
11	Riverside	584	358.5	24.59	383.0	2.89%	74.26%
12	San Mateo	274	192.8	113.86	306.7	2.32%	76.57%
13	Tulare	330	169.7	102.41	272.1	2.06%	78.63%
14	Ventura	280	191.3	66.18	257.4	1.94%	80.58%
15	San Francisco	234	132.5	98.06	230.5	1.74%	82.32%
16	Stanislaus	158	144.6	72.63	217.2	1.64%	83.96%
17	Santa Barbara	272	198.8	0.00	198.8	1.50%	85.46%
18	Monterey	193	162.7	24.42	187.1	1.41%	86.87%
19	San Joaquin	224	182.2	0.00	182.2	1.38%	88.25%
20	Sonoma	148	114.5	58.14	172.6	1.30%	89.55%
21	Solano	148	106.3	30.84	137.2	1.04%	90.59%
22	Merced	120	93.6	36.53	130.2	0.98%	91.57%
23	Madera	134	83.1	13.82	96.9	0.73%	92.30%
24	Kings	115	92.4	0.00	92.4	0.70%	93.00%
25	Shasta	101	72.2	13.03	85.2	0.64%	93.65%
26	Yolo	90	70.7	12.92	83.6	0.63%	94.28%
27	El Dorado	80	50.6	14.31	64.9	0.49%	94.77%
28	Placer	55	44.5	14.31	58.8	0.44%	95.21%
29	Yuba	120	54.7	0.00	54.7	0.41%	95.62%
30	Butte	60	53.0	1.62	54.7	0.41%	96.04%
31	Humboldt	44	38.3	11.99	50.3	0.38%	96.42%
32	San Luis Obispo	45	37.8	11.77	49.6	0.37%	96.79%
33	Colusa	60	49.4	0.00	49.4	0.37%	97.17%
34	Napa	50	43.6	0.00	43.6	0.33%	97.49%
35	Santa Cruz	42	24.9	10.61	35.6	0.27%	97.76%
36	Del Norte	62	34.6	0.00	34.6	0.26%	98.02%
37	Imperial	72	30.7	0.00	30.7	0.23%	98.26%
38	Lake	40	22.0	6.00	28.0	0.21%	98.47%
39	Mendocino	43	27.1	0.00	27.1	0.20%	98.67%
40	Marin	40	19.9	6.34	26.2	0.20%	98.87%
41	Siskiyou	20	17.3	8.66	26.0	0.20%	99.07%
42	San Benito	20	19.0	4.31	23.3	0.18%	99.24%
43	Nevada	30	19.7	0.00	19.7	0.15%	99.39%
44	Tehama	40	18.5	0.69	19.2	0.14%	99.54%
45	Glenn	22	17.1	0.00	17.1	0.13%	99.67%
46	Inyo	14	13.7	0.00	13.7	0.10%	99.77%
47	Trinity	28	13.3	0.00	13.3	0.10%	99.87%
48	Lassen	40	6.3	3.38	9.7	0.07%	99.94%
49	Tuolumne	0	0.0	4.31	4.3	0.03%	99.98%
50	Amador	0	0.0	2.75	2.7	0.02%	100.00%
51	Mariposa	4	0.4	0.00	0.4	0.00%	100.00%
52	Mono	4	0.0	0.00	0.0	0.00%	100.00%
53	Sierra	0	0.0	0.00	0.0	0.00%	100.00%
		<b>14,103</b>	<b>10,410.4</b>	<b>2,828.0</b>	<b>13,238.4</b>	<b>100.00%</b>	

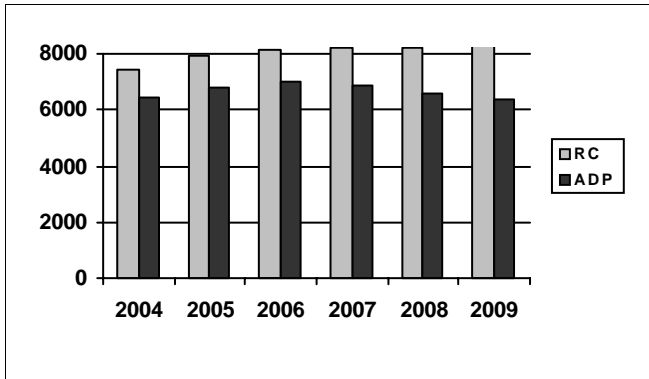
\*ADP on County Breakout Report may not equal ADP on other Summary Reports due to rounding

## Juvenile Detention Profile Survey

1st Quarter Report 2009	Juvenile Detention Profile Survey									
	Rated Capacity	One Day Snapshot				Average Daily Population				
		Misdemeanor		Felony		Pre-Disposition		Post-Disposition		Total ADP
	Male	Female	Male	Female	Male	Female	Male	Female		
Juvenile Halls	8,298.3	11.3%	3.2%	29.4%	3.8%	3,046.3	543.9	2,402.1	391.8	6,384.1
Camps / Ranches	5,804.3	7.7%	1.2%	20.9%	1.8%			3,659.2	367.1	4,026.3
<b>Other Juveniles in the System</b>		<b>Male</b>	<b>Female</b>	<b>Male</b>	<b>Female</b>	<b>Male</b>	<b>Female</b>	<b>Male</b>	<b>Female</b>	<b>Total ADP</b>
Juveniles on home supervision with electronic monitoring		5.3%	1.3%	5.1%	1.1%	546.5	141.3	851.2	165.6	1,704.6
Juveniles on home supervision without electronic monitoring		1.6%	0.6%	2.7%	0.6%	279.7	70.2	285.0	80.2	715.1
Juveniles alternative confinement programs		0.9%	0.1%	1.2%	0.2%	34.2	5.9	314.4	53.7	408.2
<b>Grand Totals</b>		<b>26.8%</b>	<b>6.4%</b>	<b>59.3%</b>	<b>7.5%</b>	<b>3,906.6</b>	<b>761.4</b>	<b>7,512.0</b>	<b>1,058.4</b>	<b>13,238.4</b>
<b>Mental Health Snapshot</b>										
Number of open mental health cases this day									4,602.4	
Number of juveniles receiving psychotropic medication									1,644.4	
<b>Crowding</b>										
Average daily population of juveniles in other jurisdictions DUE TO LACK OF SPACE									25.5	
Number of juveniles released early DUE TO LACK OF SPACE									65.9	
Average number of days that one or more facilities in a county exceeded the Rated Capacity									8.9	
<b>Average Bookings Per Month</b>										
Number of Juvenile Hall bookings/admissions									9,122.9	
Number of bookings for weapon-related offenses									772.9	
Number of 601 bookings									19.0	
Number of 777 bookings									1,686.7	
Number of direct file {WIC 602(b) and 707(d)} bookings									77.3	
<b>Final Month of the Quarter (One-Day Snapshot)</b>										
Detained for 707b Offense									1,182.0	
Awaiting placement									586.0	
Awaiting transport to a camp									432.0	
Awaiting transfer to Youth Authority									55.0	
Court commitments to juvenile hall (Ricardo M)									771.3	
Found unfit per 707.01 WIC									113.6	
Direct files to Adult Court-602(b) and 707(d) WIC									402.0	
Hospitalized outside detention facility for MEDICAL CARE									11.0	
Hospitalized outside detention facility for MENTAL HEALTH CARE									10.0	
Believed to be criminal illegal aliens									170.6	
<b>Average Length of Stay</b>										
Juvenile Hall (all releases)									24.9	
Juvenile Hall to Camps									38.3	
Juvenile Hall to other out-of-home placements (i.e. group homes or foster homes)									46.4	
Juvenile Hall who were found unfit (per juvenile court)									436.7	
Juvenile Hall who were direct filings to adult court									284.6	
Camps (all releases)									110.5	
<b>Cumulative Total for the Quarter</b>										
<b>Detention Behavior</b>					<b>Juvenile Halls</b>		<b>Camps / Ranches</b>		<b>Other Detention</b>	
Assaults by juveniles on staff					129.0		12.0		0.0	
Escapes					6.0		133.0		0.0	
Suicide Attempts					90.0		5.0		0.0	
Suicides					0.0		0.0		0.0	

# First Quarter Report, 2009 - Juvenile Hall Data

## Rated Capacity RC and ADP for Juvenile Halls



The decrease in ADP has continued in 2009; the 1st Quarter ADP decreased 2% from the previous quarter. At 6,384, this quarter's ADP is lower than each quarter in the previous year and is 3% less than the same quarter in 2008.

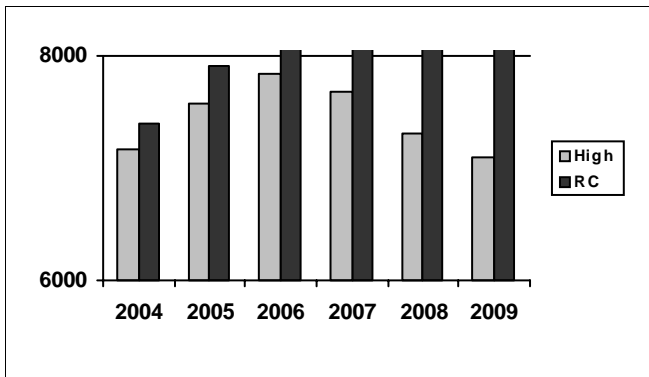
Summary of Juvenile Hall ADP

2004	2005	2006	2007	2008
6,460	6,818	7,017	6,858	6,614

2009 Summary of Juvenile Hall ADP

Q1	Average
6,384	6,384

## Juvenile Hall Highest One-Day Population and RC



Much like the ADP, the 1st Quarter high one day population in 2009 is lower than each quarter in 2008.

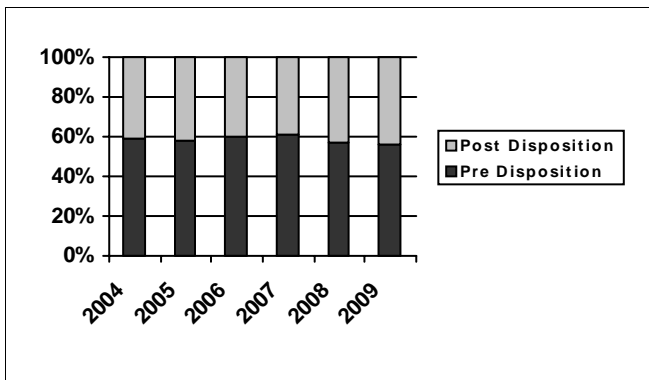
Summary of Juvenile Hall Highest One Day

2004	2005	2006	2007	2008
7,166	7,575	7,837	7,686	7,317

2009 Summary of Highest One-Day Population

Q1	Average
7,091	7,091

## Pre-Disposition in Juvenile Halls



The 1st Quarter 2009 distribution of pre-disposition in juvenile halls is the same as that in the previous quarter. It is, however, 5% less than 1st Quarter 2008.

Summary of Pre-Disposition in Juvenile Halls

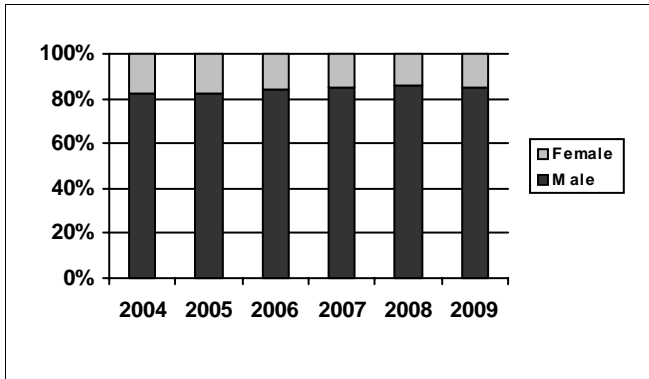
2004	2005	2006	2007	2008
59%	58%	60%	61%	57%

2009 Summary of Pre-Disposition Juvenile Halls

Q1	Average
56%	56%

# First Quarter Report, 2009 - Juvenile Hall Data

## Gender Distribution in Juvenile Halls

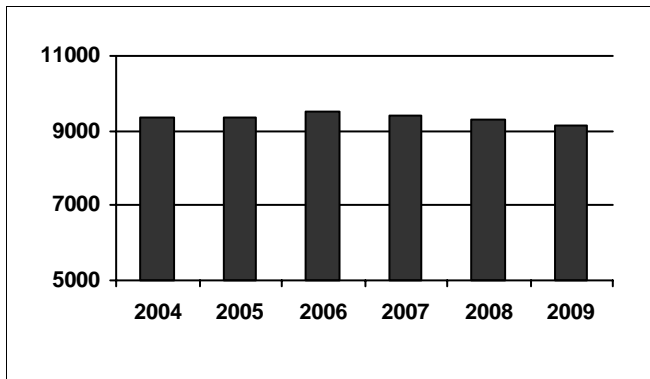


This quarter's distribution of gender is consistent with both 2007 and 2008 data. Males still comprise 85% of the juvenile hall population.

Summary of Males in Juvenile Halls				
2004	2005	2006	2007	2008
82%	82%	84%	85%	86%

2009 Summary of Males in Juvenile Hall		
Q1		Average
85%		85%

## Average Number of Juveniles Booked per Month

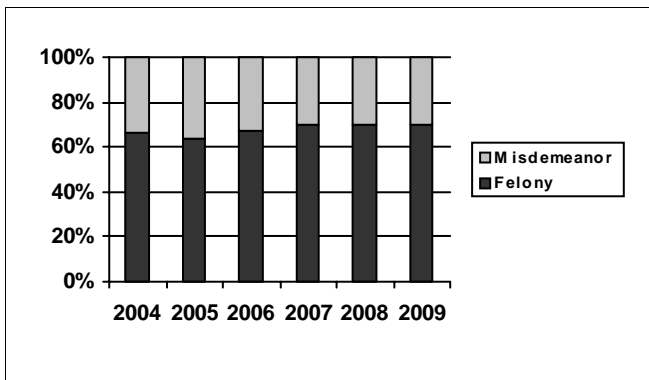


The previous quarter's average number of juveniles booked per month was the lowest in recent years; this quarter's number has increased more than 3% in the previous quarter of 8,831.

Summary of Juveniles Booked per Month				
2004	2005	2006	2007	2008
9,337	9,353	9,539	9,422	9,325

2009 Summary of Monthly Bookings		
Q1		Average
9,123		9,123

## Distribution of Charge in Juvenile Halls



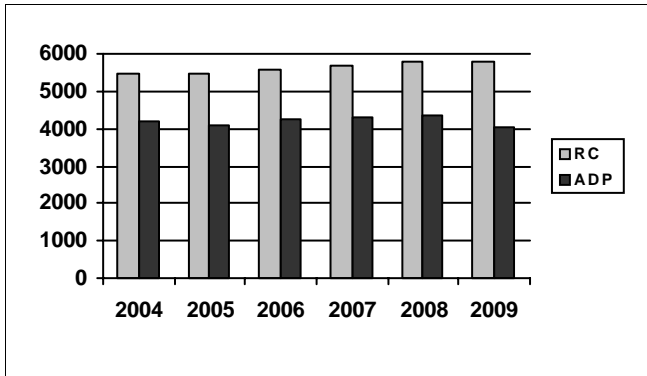
The distribution of charge in juvenile halls remains constant.

Summary of Felony Charges in Juvenile Halls				
2004	2005	2006	2007	2008
66%	64%	67%	70%	70%

2009 Summary of Felony Charge Juvenile Hall		
Q1		Average
70%		70%

# First Quarter Report, 2009 - Camp Data

## RC and ADP for Camps

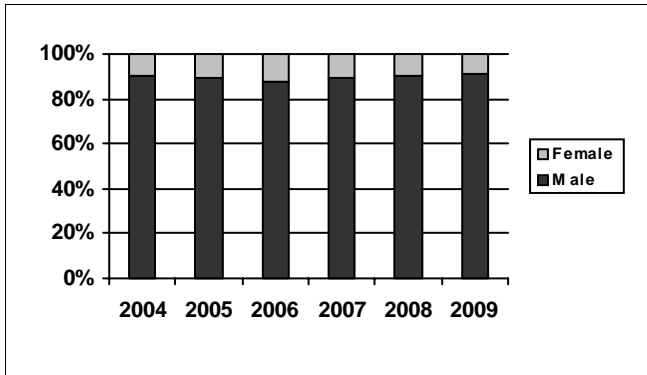


The ADP of camps in the 1st Quarter of 2009 represents more than a 5% decrease from the previous quarter (4,250) and is the lowest in recent years.

Summary of Camp ADP				
2004	2005	2006	2007	2008
4,182	4,097	4,252	4,278	4,338

2009 Summary of Camp ADP			
Q1			Average
4,026			4,026

## Gender Distribution in Camps

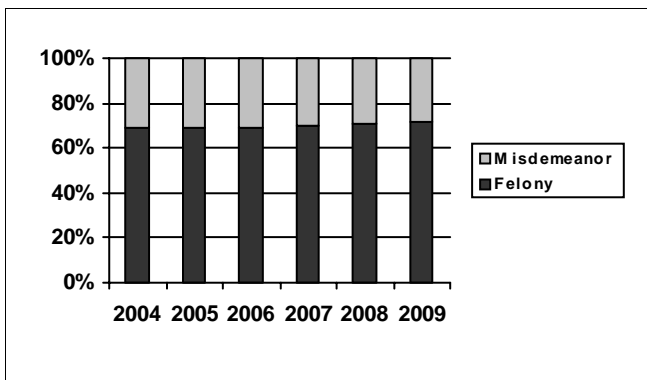


The distribution of males is 1% higher than the previous quarter; this distribution remained fairly stable during the previous year.

Summary of Males in Camps				
2004	2005	2006	2007	2008
90%	89%	88%	89%	90%

2009 Summary of Males in Camps		
Q1		Average
91%		91%

## Distribution of Charge in Camps



The percentage of felonies in the 1st Quarter 2009 is similar to that in the 2nd Quarter 2008; this distribution has not varied much in recent years.

Summary of Felonies in Camps				
2004	2005	2006	2007	2008
69%	69%	69%	70%	71%

2009 Summary of Felonies in Camps		
Q1		Average
72%		72%



## Instructions for Interpreting the Survey Report

Capacity, Population and ADP Breakout is designed to present the Juvenile Detention Profile Survey results for the major reporting categories.

- **Capacity:** this category presents the Rated Capacity (RC) in terms of the number of beds in juvenile halls and camps/ranches that meet the Corrections Standards Authority (CSA) standards.
- **High One-Day:** each jurisdiction reports for each month in the quarter, the juvenile hall and camp/ranch populations that, together, constituted the highest one-day count of the month.
- **Other:** this category refers to the sum of all juveniles who are receiving custody credit while on home supervision with or without electronic monitoring, or in alternative confinement programs.

Breakout of Juveniles in Detention is designed to present County-specific counts.

- **County-specific counts:** this page identifies the ADP for each county and the percent that county contributes to the total state juvenile detention population. The counties are ranked in descending order based on their percentage of the overall juvenile detention population in the state.

Summary of Survey Results is designed to present all the remaining Juvenile Detention Profile Survey results not already listed.

- **One-Day Snapshot:** the percentages in this section are percentages of the total ADP for juvenile halls, camps/ranches, and other juveniles in the system.
- **Average number of days that one or more facilities in a county exceeded the Rated Capacity:** this value is the result of taking all of the counties “number of days of crowding” and averaging the figures submitted by all the jurisdictions. If a jurisdiction had no crowding days, that jurisdiction was not included in the computation. In other words, the value presented indicates the typical number of crowding days per month experienced by jurisdictions that have had one or more days of crowding in the First Quarter of Calendar Year 2009.
- **Average Length of Stay:** these numbers are averages for all juveniles in each category: 1) “juvenile hall (all releases)” is computed by first taking the mean length of stay for all juveniles released from juvenile halls in a jurisdiction. Next, all the jurisdictions’ means are averaged to produce a statewide figure; 2) “juvenile hall to camps/ranches” is computed in the same fashion, but includes only those juveniles released from juvenile hall and placed in a camp or ranch; 3) “juvenile hall to other out-of-home placements” presents the average length of stay for that subset of juveniles.