

# JAIL PROFILE SURVEY

## 1997, 4th QUARTER SURVEY RESULTS

FACILITIES STANDARDS AND OPERATIONS DIVISION

BOARD OF CORRECTIONS

STATE OF CALIFORNIA  
600 Bercut Drive  
Sacramento, CA 95814-0185  
(916) 445-5073

# JAIL PROFILE SURVEY

## EXPLANATION OF RESULTS

The following pages contain the Jail Profile Survey results for the fourth quarter of 1997. Page 1 contains the quarterly totals based upon the monthly and quarterly data submitted to us by the participating jurisdictions. Pages 2 and 3 show the trend data for variables we have been tracking for the last ten years. The remainder of this page provides explanations and clarifications of the data presented.

### Page 1

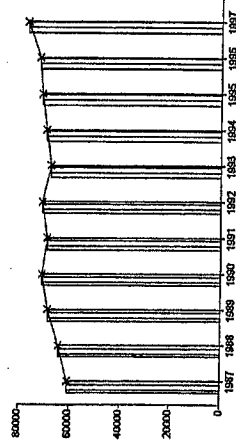
- Unless otherwise noted, "projected totals" are based upon the average per day for the variable in question. For example, there were an average of 77,633 inmates per day in local jails (excluding Type I's) during the three month span of October to December 1997.
- For some variables, we did not receive data from all jurisdictions. We compute the percentage of the ADP which were housed in the jurisdictions that did supply us with data. For example, 95.95% of the jurisdictions indicated the number of felony inmates in their facilities. In these cases, we projected what the statewide number of felony inmates would have been if we had complete data from all the participating jurisdictions.
- The number for "Bookings" is the average of the monthly totals for October, November and December.
- For the following variables, the numbers presented are the totals as of the mid-quarter (i.e., November 15, 1997): Pretrial Release, Early Release, 2 and 3 Strikes, Felony Warrants, Misdemeanor Warrants, Juveniles in Custody and Undocumented Aliens.
- Assaults is the total number of serious inmate assaults on staff (resulting in a crime report), statewide, during the fourth quarter of 1997.

### Pages 2 and 3

- The data in the 10-Year Summary tables are based upon survey data which the Board has gathered since the early 1980's.
- Prior to 1995, yearly averages were reported to the Board on an annual basis. Yearly averages from 1996 on have been the average across the 12 calendar months. In 1995, the yearly figure reported is the fourth quarter average, since we do not have data from the first three quarters.

**Average Daily Population**

| 10 Year Summary |        |        |        |        |        |        |        |        |        |        |
|-----------------|--------|--------|--------|--------|--------|--------|--------|--------|--------|--------|
| 1987            | 1988   | 1989   | 1990   | 1991   | 1992   | 1993   | 1994   | 1995   | 1996   | 1997   |
| 60,802          | 64,335 | 68,535 | 70,845 | 68,923 | 70,853 | 67,576 | 69,233 | 71,107 | 72,029 | 72,029 |



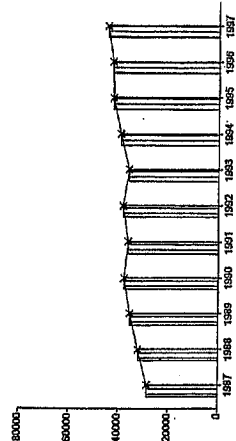
The ADP increased only slightly in the last quarter of 1997. Nevertheless, there has been an increase in ADP every quarter in the last two years. Furthermore, the ADP for the last quarter of 1997 is almost 6,000 higher than the first quarter of 1996. Finally, the increase from 1996 to 1997 was one of the largest one-year increases since we have been collecting these data. We believe that the ADP will continue to increase, right up to the maximum capacity of the California jail system.

**Quarterly Results**

|      | Q1     | Q2     | Q3     | Q4     | Average |
|------|--------|--------|--------|--------|---------|
| 1996 | 71,117 | 71,590 | 72,473 | 72,935 | 72,029  |
| 1997 | 75,684 | 76,778 | 77,529 | 77,633 | 76,906  |

**Non-Sentenced ADP**

| 10 Year Summary |        |        |        |        |        |        |        |        |        |        |
|-----------------|--------|--------|--------|--------|--------|--------|--------|--------|--------|--------|
| 1987            | 1988   | 1989   | 1990   | 1991   | 1992   | 1993   | 1994   | 1995   | 1996   | 1997   |
| 28,528          | 31,959 | 35,264 | 37,630 | 36,064 | 38,110 | 35,899 | 39,122 | 42,237 | 42,541 | 42,541 |



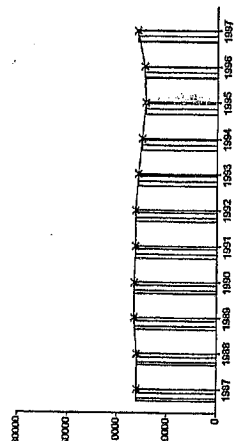
The non-sentenced population was unchanged in the last quarter of 1997. Since the first quarter of 1996, the non-sentenced population has increased by 5%. So far, with only two years of data in hand, it appears that if there is going to be a significant change in the non-sentenced population, it will occur between the last quarter of the calendar year and the first quarter of the next calendar year. We will know soon whether such a change will occur again in 1998 as we process the first quarter data.

**Quarterly Results**

|      | Q1     | Q2     | Q3     | Q4     | Average |
|------|--------|--------|--------|--------|---------|
| 1996 | 42,812 | 42,724 | 42,107 | 42,520 | 42,541  |
| 1997 | 44,257 | 44,072 | 45,003 | 45,028 | 44,590  |

**Sentenced ADP**

| 10 Year Summary |        |        |        |        |        |        |        |        |        |        |
|-----------------|--------|--------|--------|--------|--------|--------|--------|--------|--------|--------|
| 1987            | 1988   | 1989   | 1990   | 1991   | 1992   | 1993   | 1994   | 1995   | 1996   | 1997   |
| 32,274          | 32,376 | 33,271 | 33,215 | 32,859 | 32,743 | 31,677 | 30,142 | 28,870 | 29,488 | 29,488 |



The sentenced ADP went from 28,304 in the first quarter of 1996 to 32,606 in the last quarter of 1997, a 15% increase. Since the first quarter of 1996, the increase in the sentenced population has been almost twice that of the non-sentenced population. This is a reversal in the trend. For at least the previous decade, the non-sentenced population was growing much faster than the sentenced population.

**Quarterly Results**

|      | Q1     | Q2     | Q3     | Q4     | Average |
|------|--------|--------|--------|--------|---------|
| 1996 | 28,304 | 28,867 | 30,367 | 30,415 | 29,488  |
| 1997 | 31,426 | 32,705 | 32,526 | 32,606 | 32,316  |

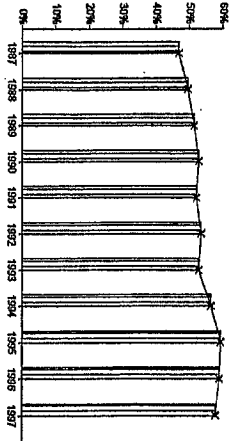
# Jail Profile Survey

3/9/98

## Percentage Non-Sentenced

| 10 Year Summary |      |      |      |      |      |      |      |      |      |
|-----------------|------|------|------|------|------|------|------|------|------|
| 1987            | 1988 | 1989 | 1990 | 1991 | 1992 | 1993 | 1994 | 1995 | 1996 |
| 47%             | 50%  | 51%  | 53%  | 52%  | 54%  | 53%  | 57%  | 59%  | 59%  |

| Quarterly Results |    |    |    |         |
|-------------------|----|----|----|---------|
| Q1                | Q2 | Q3 | Q4 | Average |
| 1996              | 60 | 60 | 58 | 58      |
| 1997              | 58 | 57 | 58 | 58      |

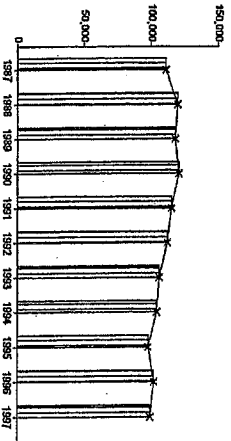


Due to the relatively faster growth of the sentenced population, the percentage of the ADP that is non-sentenced declined in the last two years from 60% to 58%. Even though the decline is small, it is significant since the percentage of the non-sentenced ADP grew steadily from 47% in 1986 to 60% in 1996. It will be interesting to see if this one-year downturn is the beginning of a trend.

## Average Number of Persons Booked

| 10 Year Summary |         |         |         |         |         |         |         |        |         |
|-----------------|---------|---------|---------|---------|---------|---------|---------|--------|---------|
| 1987            | 1988    | 1989    | 1990    | 1991    | 1992    | 1993    | 1994    | 1995   | 1996    |
| 111,039         | 119,838 | 118,253 | 120,716 | 115,313 | 112,009 | 105,593 | 103,996 | 97,589 | 101,939 |

| Quarterly Results |         |         |         |         |
|-------------------|---------|---------|---------|---------|
| Q1                | Q2      | Q3      | Q4      | Average |
| 1996              | 104,385 | 103,433 | 104,133 | 95,805  |
| 1997              | 98,505  | 99,686  | 105,096 | 93,434  |

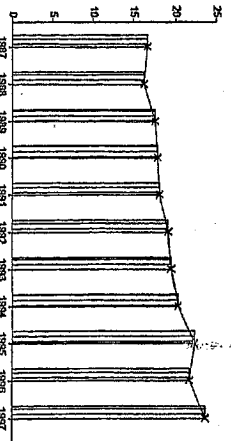


The average number of people booked into California jails per month declined from 104,385 in the first quarter of 1996 to 93,434 in the last quarter of 1997. This is in keeping with a fairly steady decline since 1990. It is interesting that as the crime rate goes down, and bookings decline, the ADP is increasing.

## Average Length of Stay

| 10 Year Summary |      |      |      |      |      |      |      |      |      |
|-----------------|------|------|------|------|------|------|------|------|------|
| 1987            | 1988 | 1989 | 1990 | 1991 | 1992 | 1993 | 1994 | 1995 | 1996 |
| 16.7            | 16.3 | 17.6 | 17.9 | 18.2 | 19.2 | 19.5 | 20.3 | 22.3 | 21.6 |

| Quarterly Results |      |      |      |         |
|-------------------|------|------|------|---------|
| Q1                | Q2   | Q3   | Q4   | Average |
| 1996              | 20.7 | 21.0 | 21.5 | 23.4    |
| 1997              | 23.1 | 23.4 | 22.6 | 25.5    |



An increase in the Average Length of Stay may be the primary reason that the ADP is increasing as bookings are decreasing. The Average Length of Stay was 20.7 days in the first quarter of 1996 and 25.5 days in the last quarter of 1997. Considering the fact that there are over 1.2 million people booked into California jails per year, an average increase of 5 days in the length of stay implies the need for an additional 5 million bed-days in jail capacity.

**AVERAGE DAILY POPULATION**  
**NON-SENTENCED/SENTENCED MALE/FEMALE**  
**CALIFORNIA COUNTY JAILS - FOR MONTHS OF OCTOBER - DECEMBER 1997**

| Jurisdiction                        | Non-sentenced |            |              |            | Sentenced     |            |               |            | Total        |            |               |
|-------------------------------------|---------------|------------|--------------|------------|---------------|------------|---------------|------------|--------------|------------|---------------|
|                                     | Male          |            | Female       |            | Male          |            | Female        |            |              |            |               |
|                                     | #             | %          | #            | %          | #             | %          | #             | %          |              |            |               |
| 35. San Benito Sheriff's Dept.      | 40            | 95%        | 2            | 5%         | 42            | 44%        | 49            | 92%        | 54           | 56%        | 96            |
| 36. San Bernardino Sheriff's Dept.  | 2,960         | 87%        | 448          | 13%        | 3,408         | 70%        | 1,196         | 83%        | 242          | 17%        | 4,846         |
| 37. San Diego Probation Dept.       | 0             | 0%         | 0            | 0%         | 0             | 0%         | 342           | 100%       | 0            | 0%         | 342           |
| 38. San Diego Sheriff's Dept.       | 2,619         | 86%        | 423          | 14%        | 3,041         | 56%        | 1,957         | 83%        | 406          | 17%        | 5,404         |
| 39. San Diego Work/Furlough         | 5             | 100%       | 0            | 0%         | 5             | 2%         | 175           | 88%        | 24           | 12%        | 205           |
| 40. San Francisco Sheriff's Dept.   | 1,097         | 79%        | 286          | 21%        | 1,384         | 76%        | 333           | 76%        | 106          | 24%        | 1,823         |
| 41. San Joaquin Sheriff's Dept.     | 527           | 87%        | 82           | 13%        | 608           | 50%        | 517           | 84%        | 102          | 16%        | 1,228         |
| 42. San Luis Obispo Sheriff's Dept. | 115           | 84%        | 21           | 16%        | 136           | 36%        | 217           | 88%        | 30           | 12%        | 383           |
| 43. San Mateo Sheriff's Dept.       | 308           | 85%        | 54           | 15%        | 362           | 35%        | 594           | 87%        | 90           | 13%        | 1,045         |
| 44. Santa Ana Police Dept.          | 322           | 86%        | 53           | 14%        | 375           | 100%       | 0             | 0%         | 0            | 0%         | 375           |
| 45. Santa Barbara Sheriff's Dept.   | 368           | 88%        | 52           | 12%        | 421           | 43%        | 508           | 89%        | 60           | 11%        | 989           |
| 46. Santa Clara Dept. of Correction | 2,807         | 90%        | 312          | 10%        | 3,120         | 65%        | 1,439         | 86%        | 229          | 14%        | 4,788         |
| 47. Santa Clara Probation Dept.     | 0             | 0%         | 0            | 0%         | 0             | 0%         | 73            | 73%        | 27           | 27%        | 100           |
| 48. Santa Cruz Sheriff's Dept.      | 176           | 89%        | 21           | 11%        | 198           | 32%        | 358           | 87%        | 56           | 13%        | 612           |
| 49. Scapular House                  | 0             | 0%         | 0            | 0%         | 0             | 0%         | 191           | 93%        | 14           | 7%         | 205           |
| 50. Shasta Sheriff's Dept.          | 197           | 84%        | 37           | 16%        | 234           | 66%        | 100           | 84%        | 18           | 16%        | 352           |
| 51. Siskiyou Sheriff's Dept.        | 44            | 87%        | 7            | 13%        | 51            | 59%        | 27            | 75%        | 9            | 25%        | 86            |
| 52. Solano Sheriff's Dept.          | 477           | 87%        | 70           | 13%        | 547           | 62%        | 291           | 86%        | 48           | 14%        | 886           |
| 53. Sonoma Sheriff's Dept.          | 435           | 84%        | 84           | 16%        | 519           | 53%        | 401           | 89%        | 52           | 11%        | 972           |
| 54. Stanislaus Sheriff's Dept.      | 512           | 90%        | 55           | 10%        | 567           | 53%        | 408           | 82%        | 91           | 18%        | 1,066         |
| 55. Sutter Sheriff's Dept.          | 118           | 85%        | 21           | 15%        | 139           | 61%        | 61            | 70%        | 26           | 30%        | 226           |
| 56. Tehama Sheriff's Dept.          | 0             | 0%         | 0            | 0%         | 0             | 0%         | 188           | 91%        | 19           | 9%         | 207           |
| 57. Trinity Sheriff's Dept.         | 20            | 91%        | 2            | 9%         | 22            | 47%        | 23            | 92%        | 2            | 8%         | 48            |
| 58. Tulare Sheriff's Dept.          | 553           | 87%        | 85           | 13%        | 638           | 49%        | 590           | 90%        | 66           | 10%        | 1,295         |
| 59. Tuolumne Sheriff's Dept.        | 39            | 82%        | 8            | 18%        | 48            | 42%        | 55            | 84%        | 11           | 16%        | 114           |
| 60. Ventura County Work Furlough    | 0             | 0%         | 0            | 0%         | 0             | 0%         | 152           | 79%        | 39           | 21%        | 191           |
| 61. Ventura Sheriff's Dept.         | 599           | 90%        | 68           | 10%        | 667           | 51%        | 560           | 88%        | 78           | 12%        | 1,304         |
| 62. Yolo Sheriff's Dept.            | 219           | 84%        | 43           | 16%        | 263           | 74%        | 74            | 82%        | 16           | 18%        | 353           |
| 63. Yuba County Sheriff's Dept.     | 197           | 89%        | 24           | 11%        | 221           | 61%        | 124           | 88%        | 16           | 12%        | 362           |
| <b>Statewide</b>                    | <b>39,584</b> | <b>88%</b> | <b>5,443</b> | <b>12%</b> | <b>45,028</b> | <b>58%</b> | <b>27,927</b> | <b>86%</b> | <b>4,679</b> | <b>14%</b> | <b>77,633</b> |

\*\* Jurisdictions which have not yet been updated for the month(s) in question  
Column totals may not add up to the grand total due to rounding

**AVERA DAILY POPULATION**  
**NON-SENTENCED/SENTENCED MALE/FEMALE**  
**CALIFORNIA COUNTY JAILS - FOR MONTHS OF OCTOBER - DECEMBER 1997**

|                                 | Non-sentenced |     |        |     | Sentenced |     |        |     | Total |     |        |
|---------------------------------|---------------|-----|--------|-----|-----------|-----|--------|-----|-------|-----|--------|
|                                 | Male          |     | Female |     | Male      |     | Female |     |       |     |        |
|                                 | #             | %   | #      | %   | #         | %   | #      | %   |       |     |        |
| 1. Alameda Sheriff's Dept.      | 2,651         | 92% | 245    | 8%  | 1,020     | 84% | 199    | 16% | 1,219 | 30% | 4,115  |
| 2. Amador Sheriff's Dept.       | 14            | 75% | 4      | 25% | 34        | 89% | 4      | 11% | 38    | 68% | 56     |
| 3. Butte Sheriff's Dept.        | 222           | 89% | 28     | 11% | 132       | 90% | 15     | 10% | 147   | 37% | 397    |
| 4. Calaveras Sheriff's Dept.    | 18            | 95% | 1      | 5%  | 27        | 82% | 6      | 18% | 32    | 63% | 51     |
| 5. Casa Oasis                   | 0             | 0%  | 0      | 0%  | 0         | 0%  | 0      | 0%  | 0     | 0%  | 0      |
| 6. Colusa Sheriff's Dept.       | 32            | 95% | 2      | 5%  | 35        | 93% | 3      | 7%  | 38    | 53% | 72     |
| 7. Contra Costa Sheriff's Dept. | 784           | 79% | 212    | 21% | 541       | 89% | 70     | 11% | 611   | 38% | 1,607  |
| 8. Del Norte Sheriff's Dept.    | 69            | 87% | 10     | 13% | 29        | 87% | 4      | 13% | 34    | 30% | 112    |
| 9. El Dorado Sheriff's Dept.    | 115           | 89% | 14     | 11% | 163       | 88% | 22     | 12% | 185   | 59% | 314    |
| 10. Fresno Sheriff's Dept.      | 1,517         | 88% | 210    | 12% | 357       | 87% | 52     | 13% | 409   | 19% | 2,137  |
| 11. Glenn Sheriff's Dept.       | 39            | 93% | 3      | 7%  | 20        | 83% | 4      | 17% | 24    | 36% | 66     |
| 12. Humboldt Sheriff's Dept.    | 223           | 89% | 28     | 11% | 11        | 91% | 1      | 9%  | 12    | 5%  | 263    |
| 13. Imperial Sheriff's Dept.    | 125           | 50% | 125    | 50% | 125       | 50% | 125    | 50% | 250   | 50% | 500    |
| 14. Inyo Sheriff's Dept.        | 19            | 84% | 4      | 16% | 32        | 76% | 10     | 24% | 42    | 65% | 65     |
| 15. Kern Sheriff's Dept.        | 1,268         | 87% | 189    | 13% | 423       | 77% | 124    | 23% | 547   | 27% | 2,003  |
| 16. Kings Sheriff's Dept.       | 127           | 88% | 17     | 12% | 153       | 87% | 24     | 13% | 177   | 55% | 322    |
| 17. Lake Sheriff's Dept.        | 80            | 91% | 8      | 9%  | 74        | 82% | 16     | 18% | 90    | 51% | 178    |
| 18. Lassen Sheriff's Dept.      | 35            | 83% | 7      | 17% | 28        | 59% | 20     | 41% | 48    | 54% | 90     |
| 19. Los Angeles Sheriff's Dept. | 10,360        | 90% | 1,147  | 10% | 8,106     | 88% | 1,101  | 12% | 9,207 | 44% | 20,714 |
| 20. Madera Corrections Dept.    | 159           | 89% | 19     | 11% | 162       | 92% | 14     | 8%  | 176   | 50% | 355    |
| 21. Marin Sheriff's Dept.       | 187           | 88% | 26     | 12% | 52        | 82% | 12     | 18% | 64    | 23% | 276    |
| 22. Mariposa Sheriff's Dept.    | 28            | 93% | 2      | 7%  | 17        | 89% | 2      | 11% | 19    | 38% | 49     |
| 23. Mendocino Sheriff's Dept.   | 112           | 90% | 12     | 10% | 87        | 90% | 10     | 10% | 97    | 44% | 221    |
| 24. Merced Sheriff's Dept.      | 304           | 91% | 30     | 9%  | 157       | 85% | 27     | 15% | 184   | 36% | 519    |
| 25. Modoc Sheriff's Dept.       | 24            | 79% | 7      | 21% | 9         | 74% | 3      | 26% | 13    | 29% | 44     |
| 26. Mono Sheriff's Dept.        | 12            | 91% | 1      | 9%  | 19        | 87% | 3      | 13% | 21    | 62% | 35     |
| 27. Monterey Sheriff's Dept.    | 621           | 89% | 75     | 11% | 352       | 85% | 60     | 15% | 412   | 37% | 1,108  |
| 28. Napa Corrections Dept.      | 114           | 91% | 11     | 9%  | 70        | 87% | 11     | 13% | 80    | 39% | 205    |
| 29. Nevada Sheriff's Dept.      | 69            | 88% | 10     | 12% | 47        | 83% | 10     | 17% | 56    | 42% | 135    |
| 30. Orange Sheriff's Dept.      | 1,992         | 90% | 232    | 10% | 2,503     | 85% | 451    | 15% | 2,954 | 57% | 5,178  |
| 31. Placer Sheriff's Dept.      | 203           | 90% | 21     | 10% | 182       | 84% | 34     | 16% | 216   | 49% | 440    |
| 32. Plumas Sheriff's Dept.      | 19            | 86% | 3      | 14% | 18        | 90% | 2      | 10% | 20    | 47% | 42     |
| 33. Riverside Sheriff's Dept.   | 1,634         | 89% | 199    | 11% | 720       | 87% | 109    | 13% | 830   | 31% | 2,663  |
| 34. Sacramento Sheriff's Dept.  | 1,652         | 85% | 283    | 15% | 1,217     | 83% | 248    | 17% | 1,465 | 43% | 3,400  |

JAIL POPULATIONS: 4th QUARTER '96 VERSUS 4th QUARTER '97

| 1996   | Quarter 4 | 1997  | Quarter 4 | Qtr 4, 97<br>minus<br>Qtr 4, 96 | Qtr 4, 97<br>% +/- | % of Total<br>Increase | Cum<br>% | Cum   | Total                           |
|--------|-----------|-------|-----------|---------------------------------|--------------------|------------------------|----------|-------|---------------------------------|
|        |           |       |           |                                 |                    |                        |          |       |                                 |
| 19,163 | 20,714    | 1,551 | 7.6%      | 8.1%                            | 28.9%              | 28.9%                  | 1,551    | 1,551 | Los Angeles Sheriff's Dept.     |
| 4,085  | 4,846     | 761   | 18.6%     | 18.6%                           | 14.2%              | 43.1%                  | 2,312    | 2,312 | San Bernardino Sheriff's Dept.  |
| 4,162  | 4,788     | 626   | 15.0%     | 15.0%                           | 11.7%              | 54.7%                  | 2,938    | 2,938 | Santa Clara Dept. of Correction |
| -      | 375       | 375   | 0.0%      | 7.0%                            | 7.0%               | 61.7%                  | 3,313    | 3,313 | Santa Ana Police Dept.          |
| 5,139  | 5,404     | 265   | 5.2%      | 5.2%                            | 4.9%               | 66.7%                  | 3,578    | 3,578 | San Diego Sheriff's Dept.       |
| 3,245  | 3,400     | 155   | 4.8%      | 4.8%                            | 2.9%               | 69.5%                  | 3,733    | 3,733 | Sacramento Sheriff's Dept.      |
| 3,988  | 4,115     | 128   | 3.2%      | 3.2%                            | 2.4%               | 71.9%                  | 3,860    | 3,860 | Alameda Sheriff's Dept.         |
| 5,061  | 5,178     | 117   | 2.3%      | 2.3%                            | 2.2%               | 74.1%                  | 3,977    | 3,977 | Orange Sheriff's Dept.          |
| 876    | 989       | 113   | 12.9%     | 12.9%                           | 2.1%               | 76.2%                  | 4,090    | 4,090 | Santa Barbara Sheriff's Dept.   |
| 1,000  | 1,108     | 108   | 10.8%     | 10.8%                           | 2.0%               | 78.2%                  | 4,198    | 4,198 | Monterey Sheriff's Dept.        |
| 98     | 205       | 107   | 108.4%    | 108.4%                          | 2.0%               | 80.2%                  | 4,304    | 4,304 | Scapular House                  |
| 964    | 1,066     | 102   | 10.6%     | 10.6%                           | 1.9%               | 82.1%                  | 4,406    | 4,406 | Stanislaus Sheriff's Dept.      |
| 1,139  | 1,228     | 90    | 7.9%      | 7.9%                            | 1.7%               | 83.8%                  | 4,496    | 4,496 | San Joaquin Sheriff's Dept.     |
| 2,581  | 2,663     | 82    | 3.2%      | 3.2%                            | 1.5%               | 85.3%                  | 4,578    | 4,578 | Riverside Sheriff's Dept.       |
| 1,526  | 1,607     | 81    | 5.3%      | 5.3%                            | 1.5%               | 86.8%                  | 4,659    | 4,659 | Contra Costa Sheriff's Dept.    |
| 806    | 886       | 80    | 9.9%      | 9.9%                            | 1.5%               | 88.3%                  | 4,739    | 4,739 | Solano Sheriff's Dept.          |
| 133    | 207       | 74    | 56.1%     | 56.1%                           | 1.4%               | 89.7%                  | 4,813    | 4,813 | Tehama Sheriff's Dept.          |
| 900    | 972       | 72    | 8.0%      | 8.0%                            | 1.3%               | 91.0%                  | 4,886    | 4,886 | Sonoma Sheriff's Dept.          |
| 1,238  | 1,295     | 57    | 4.6%      | 4.6%                            | 1.1%               | 92.1%                  | 4,943    | 4,943 | Tulare Sheriff's Dept.          |
| 308    | 362       | 54    | 17.6%     | 17.6%                           | 1.0%               | 93.1%                  | 4,997    | 4,997 | Yuba County Sheriff's Dept.     |
| 567    | 612       | 45    | 7.9%      | 7.9%                            | 0.8%               | 93.9%                  | 5,042    | 5,042 | Santa Cruz Sheriff's Dept.      |
| 227    | 263       | 36    | 15.9%     | 15.9%                           | 0.7%               | 94.6%                  | 5,078    | 5,078 | Humboldt Sheriff's Dept.        |
| 165    | 191       | 26    | 15.8%     | 15.8%                           | 0.5%               | 95.1%                  | 5,104    | 5,104 | Ventura County Work Furlough    |
| 358    | 383       | 25    | 6.9%      | 6.9%                            | 0.5%               | 95.6%                  | 5,129    | 5,129 | San Luis Obispo Sheriff's Dept. |
| 495    | 519       | 24    | 4.9%      | 4.9%                            | 0.4%               | 96.0%                  | 5,153    | 5,153 | Merced Sheriff's Dept.          |
| 319    | 342       | 23    | 7.1%      | 7.1%                            | 0.4%               | 96.4%                  | 5,175    | 5,175 | San Diego Probation Dept.       |
| 186    | 205       | 19    | 10.4%     | 10.4%                           | 0.4%               | 96.8%                  | 5,195    | 5,195 | Napa Corrections Dept.          |
| 93     | 112       | 19    | 20.4%     | 20.4%                           | 0.4%               | 97.1%                  | 5,214    | 5,214 | Del Norte Sheriff's Dept.       |
| 34     | 48        | 14    | 42.4%     | 42.4%                           | 0.3%               | 97.4%                  | 5,228    | 5,228 | Trinity Sheriff's Dept.         |
| 300    | 314       | 14    | 4.7%      | 4.7%                            | 0.3%               | 97.7%                  | 5,242    | 5,242 | El Dorado Sheriff's Dept.       |
| 207    | 221       | 14    | 6.6%      | 6.6%                            | 0.3%               | 97.9%                  | 5,256    | 5,256 | Menocino Sheriff's Dept.        |
| 342    | 355       | 13    | 3.9%      | 3.9%                            | 0.2%               | 98.2%                  | 5,269    | 5,269 | Madera Corrections Dept.        |
| 32     | 44        | 12    | 36.3%     | 36.3%                           | 0.2%               | 98.4%                  | 5,281    | 5,281 | Mendocino Sheriff's Dept.       |
| 167    | 178       | 11    | 6.5%      | 6.5%                            | 0.2%               | 98.6%                  | 5,292    | 5,292 | Lake Sheriff's Dept.            |
| 215    | 226       | 11    | 5.0%      | 5.0%                            | 0.2%               | 98.8%                  | 5,302    | 5,302 | Sutter Sheriff's Dept.          |
| 45     | 56        | 11    | 23.5%     | 23.5%                           | 0.2%               | 99.0%                  | 5,313    | 5,313 | Amarador Sheriff's Dept.        |
| 25     | 35        | 10    | 37.7%     | 37.7%                           | 0.2%               | 99.2%                  | 5,323    | 5,323 | Monro Sheriff's Dept.           |
| 63     | 72        | 9     | 14.3%     | 14.3%                           | 0.2%               | 99.3%                  | 5,332    | 5,332 | Colusa Sheriff's Dept.          |
| 432    | 440       | 8     | 1.8%      | 1.8%                            | 0.1%               | 99.5%                  | 5,339    | 5,339 | Placer Sheriff's Dept.          |
| 35     | 42        | 7     | 18.6%     | 18.6%                           | 0.1%               | 99.6%                  | 5,346    | 5,346 | Plumas Sheriff's Dept.          |
| 43     | 49        | 6     | 14.6%     | 14.6%                           | 0.1%               | 99.7%                  | 5,352    | 5,352 | Mariposa Sheriff's Dept.        |
| 1,298  | 1,304     | 6     | 0.5%      | 0.5%                            | 0.1%               | 99.8%                  | 5,358    | 5,358 | Ventura Sheriff's Dept.         |
| 60     | 65        | 5     | 9.1%      | 9.1%                            | 0.1%               | 99.9%                  | 5,364    | 5,364 | Inyo Sheriff's Dept.            |
| 84     | 86        | 2     | 2.8%      | 2.8%                            | 0.0%               | 100.0%                 | 5,366    | 5,366 | Siackyon Sheriff's Dept.        |
| 113    | 114       | 1     | 0.9%      | 0.9%                            | 0.0%               | 0.0%                   | 5,367    | 5,367 | Tuolumne Sheriff's Dept.        |
| 205    | 205       | 0     | 0.1%      | 0.1%                            | 0.0%               | 0.0%                   | 5,367    | 5,367 | San Diego Work Furlough         |
| 66     | 66        | 0     | 0.0%      | 0.0%                            | 0.0%               | 0.0%                   | 5,367    | 5,367 | Glenn Sheriff's Dept.           |
| 53     | 51        | (2)   | -3.2%     | -3.2%                           | 0.0%               | 0.0%                   | 5,366    | 5,366 | Calaveras Sheriff's Dept.       |
| 2,139  | 2,137     | (2)   | -0.1%     | -0.1%                           | 0.0%               | 0.0%                   | 5,364    | 5,364 | Fresno Sheriff's Dept.          |
| 92     | 90        | (2)   | -2.6%     | -2.6%                           | 0.4%               | 0.9%                   | 5,361    | 5,361 | Lassen Sheriff's Dept.          |
| 359    | 352       | (7)   | -1.9%     | -1.9%                           | 1.0%               | 1.9%                   | 5,355    | 5,355 | Shasta Sheriff's Dept.          |
| 142    | 135       | (7)   | -4.9%     | -4.9%                           | 1.0%               | 2.9%                   | 5,348    | 5,348 | Nevada Sheriff's Dept.          |
| 286    | 276       | (10)  | -3.4%     | -3.4%                           | 1.4%               | 4.4%                   | 5,338    | 5,338 | Marin Sheriff's Dept.           |
| 106    | 96        | (10)  | -9.7%     | -9.7%                           | 1.5%               | 5.9%                   | 5,328    | 5,328 | San Benito Sheriff's Dept.      |
| 408    | 397       | (11)  | -2.6%     | -2.6%                           | 1.6%               | 7.5%                   | 5,317    | 5,317 | Butte Sheriff's Dept.           |
| 367    | 353       | (14)  | -3.7%     | -3.7%                           | 2.0%               | 9.6%                   | 5,304    | 5,304 | Yolo Sheriff's Dept.            |
| 338    | 322       | (16)  | -4.8%     | -4.8%                           | 2.4%               | 12.0%                  | 5,287    | 5,287 | Kings Sheriff's Dept.           |
| 26     | -         | (26)  | -100.0%   | -100.0%                         | 3.8%               | 15.8%                  | 5,262    | 5,262 | Casa Casis                      |
| 548    | 500       | (48)  | -8.8%     | -8.8%                           | 7.3%               | 23.1%                  | 5,213    | 5,213 | Imperial Sheriff's Dept.        |
| 1,123  | 1,045     | (78)  | -7.0%     | -7.0%                           | 11.8%              | 34.9%                  | 5,135    | 5,135 | San Mateo Sheriff's Dept.       |
| 2,102  | 2,003     | (99)  | -4.7%     | -4.7%                           | 14.9%              | 49.7%                  | 5,036    | 5,036 | Kern Sheriff's Dept.            |
| 265    | 100       | (165) | -62.2%    | -62.2%                          | 24.7%              | 74.4%                  | 4,871    | 4,871 | Santa Clara Probation Dept.     |
| 1,994  | 1,823     | (171) | -8.6%     | -8.6%                           | 25.7%              | 100.1%                 | 4,700    | 4,700 | San Francisco Sheriff's Dept.   |
| 72,935 | 77,635    | 4,700 | 6.4%      | 6.4%                            | 5.3%               | 100.1%                 | 5,367    | 5,367 | Total                           |

