

JAIL PROFILE SURVEY

2004, 3rd QUARTER SURVEY RESULTS

FACILITIES STANDARDS AND OPERATIONS DIVISION

BOARD OF CORRECTIONS

STATE OF CALIFORNIA
600 Bercut Drive
Sacramento, CA 95814-0185
(916) 445-5073
www.bdcorr.ca.gov

JAIL PROFILE SURVEY

EXPLANATION OF RESULTS

The following pages contain the Jail Profile Survey results for the third quarter of 2004. Page 1 contains the quarterly totals based upon the monthly and quarterly data submitted to us by the participating jurisdictions. Pages 2 and 3 show the trend data for variables we have been tracking for the last ten years. The remainder of this page provides explanations and clarifications of the data presented.

Page 1

- Unless otherwise noted, "projected totals" are based upon the average per day for the variable in question. For example, there was an average of 77,814 inmates per day in local jails (excluding Type I's) during the three-month span of July thru September 2004.
- For some variables (other than ADP), we did not receive complete data from all jurisdictions. In such instances, we used statistical procedures to estimate the statewide total.
- The number for "Bookings" is the average of the monthly totals for July, August, and September.
- For the following variables, the numbers presented are the totals as of the mid-quarter (i.e., August 15, 2004); Pretrial Release, Early Release, 2 and 3 Strikes, Felony Warrants, Misdemeanor Warrants, Juveniles in Custody and Undocumented Aliens.
- Assaults is the total number of serious inmate assaults on staff (resulting in a crime report), statewide, during the third quarter of 2004.

Pages 2 and 3

- The data in the 10-Year Summary tables are based upon survey data which the Board has gathered since the early 1980's.
- Prior to 1995, yearly averages were reported to the Board on an annual basis. Yearly averages from 1996 to the present time have been the average of the 12 calendar months. In 1995, the yearly figure reported is the fourth quarter average, since we do not have data from the first three quarters.

BOARD OF CORRECTIONS JAIL PROFILE SURVEY

Reporting Period: July to September, 2004

County Jail Populations

ADP ^a	77,814 ^b
Holding Areas	1,700
Average "Under the Roof" ^c	79,514 ^d
Highest One Day Count	83,211 ^e

Special Use Beds

Medical Beds	928
Mental Health Beds	3,159

County Jail Populations

Felony	60,665
Misdemeanor	17,149
Total	77,814
Non-Sentenced Males	45,092
Non-Sentenced Females	6,416
Sentenced Males	22,599
Sentenced Females	3,707
Total	77,814
Maximum Security Inmates	22,857
Medium Security Inmates	37,472
Minimum Security Inmates	17,485
Total	77,814

Released Per Month Due to Lack of Space

Pretrial Release	7,446 ^f
Early Release	7,859 ^f
Total	15,305

Inmates with 2 and 3 Strikes

2 Strike Inmates	3,455 ^g
3 Strike Inmates	1,429 ^g
Total	4,884

Unserviced Warrants

Felony Warrants	277,041 ^g
Misdemeanor Warrants	2,107,777 ^g
Total	2,384,818

Inmates From Other Jurisdictions

Housed on Federal Contract	3,249
Housed on Contract with CDC	2,649
From Other Counties on Contract	173
Awaiting Transport	1,430
Total	7,501

Other Jail Profile Survey Variables

Bookings Per Month	110,075 ^f
Juveniles in Custody	57 ^f
Criminal / Illegal Aliens	8,411
Assaults On Staff	281

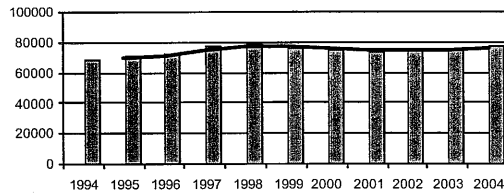
- a. The Average Daily Population for all jurisdictions (excluding Type I's) does not include inmates in holding areas.
- b. Unless otherwise indicated, the numbers reported are the average across the days in the quarter.
- c. "Under the Roof" is the sum of the Average Daily Population plus the average daily number of inmates in Holding Areas.
- d. Totals may not be the exact sum of the subtotals due to rounding.
- e. The sum of all Highest One Day inmate population counts from all jurisdictions.
- f. These data are collected on a monthly basis, this figure is an average of the total numbers collected each month during this quarter.
- g. These data are one-day snapshots collected at the end of the quarter.

Jail Profile Survey

2004

Average Daily Population

10 Year Summary									
1994	1995	1996	1997	1998	1999	2000	2001	2002	2003
69,233	70,938	72,007	76,938	79,143	76,311	75,044	73,824	75,156	75,340



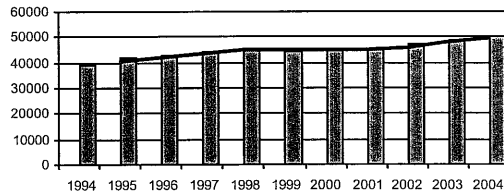
The ADP rose to 77,814 inmates in the 3rd Quarter of 2004. This is the highest ADP since the 3rd Quarter of 1998 (79,639), and the 4th highest quarterly ADP in history. Assuming that the 4th Quarter ADP is in the vicinity of 77,000 inmates, 2004 will have the second highest yearly ADP in history (the highest was 79,143 inmates in 1998). We predict that the ADP will continue to rise in the near future corresponding to an upturn in the overall crime rate in California.

Quarterly Results

	Q1	Q2	Q3	Q4	Average
2003	75,553	75,257	75,288	75,266	75,340
2004	76,030	77,411	77,814		77,088

Non-sentenced ADP

10 Year Summary									
1994	1995	1996	1997	1998	1999	2000	2001	2002	2003
39,104	42,137	42,539	44,593	45,303	44,509	44,940	45,187	46,975	49,105



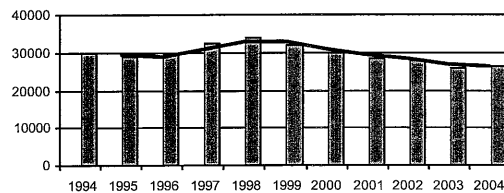
The non-sentenced male population rose 2% in the 3rd Quarter of 2004 (to 45,092 inmates). The non-sentenced female population rose 5% (to 6,416 inmates). The total increase in non-sentenced ADP was 1,326, compared to a total ADP increase of only 403 inmates (as a result of a reduction in sentenced inmates). The female population has been growing faster than the male population over the past several years. This trend continues.

Quarterly Results

	Q1	Q2	Q3	Q4	Average
2003	48,296	49,088	49,518	49,499	49,105
2004	49,876	50,181	51,507		50,525

Sentenced ADP

10 Year Summary									
1994	1995	1996	1997	1998	1999	2000	2001	2002	2003
30,129	28,801	29,468	32,347	33,841	31,802	30,109	28,637	28,180	26,235



The sentenced male population dropped 3% in the 3rd Quarter of 2004 (to 22,599 inmates). The non-sentenced female population also dropped 3% (to 3,707 inmates). The total decrease in sentenced inmates was 918 inmates. The current sentenced population is about 3,000 inmates lower than it was 20 years ago, which is remarkable when one considers that the overall ADP is about 28,000 inmates higher than it was 20 years ago. The major factor in this trend is jail space. In the 3rd Quarter of 2004, an average of 15,305 individuals were given pretrial release or were released early from their sentences due solely to lack of jail space.

Quarterly Results

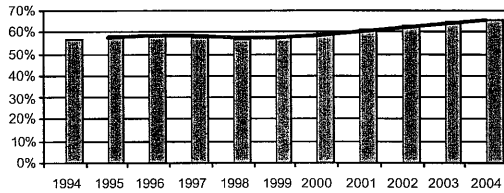
	Q1	Q2	Q3	Q4	Average
2003	27,257	26,169	25,770	25,767	26,235
2004	26,154	27,230	26,307		26,563

Jail Profile Survey

2004

Percentage Non-sentenced

10 Year Summary									
1994	1995	1996	1997	1998	1999	2000	2001	2002	2003
57%	59%	59%	58%	57%	58%	60%	61%	63%	65%



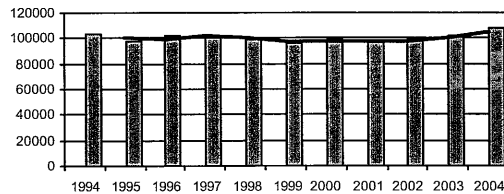
Currently, 66% of the jail population is non-sentenced. Ten years ago, 57% of the jail population was non-sentenced. We expect that the percentage of non-sentenced inmates will continue to rise as jail populations increase and jail capacity remains fairly constant.

Quarterly Results

	Q1	Q2	Q3	Q4	Average
2003	64%	65%	66%	66%	65%
2004	66%	65%	66%		66%

Average Number of Persons Booked Per Month

10 Year Summary									
1994	1995	1996	1997	1998	1999	2000	2001	2002	2003
103,996	97,589	101,767	101,210	99,229	96,684	98,486	97,089	98,625	102,217



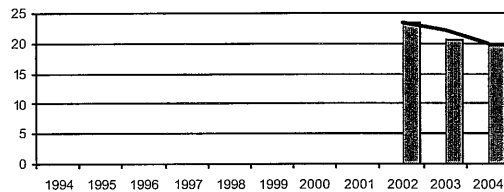
In the 3rd Quarter, an average of 110,075 individuals per month were booked. This is the highest average number of bookings for a quarter in over a decade. The number of bookings has recently been going up steadily, consistent with the increase in the overall crime rate in California.

Quarterly Results

	Q1	Q2	Q3	Q4	Average
2003	97,460	103,966	106,623	100,736	102,217
2004	107,535	106,805	110,075		108,145

Average Length Of Stay

10 Year Summary									
1994	1995	1996	1997	1998	1999	2000	2001	2002	2003
								23.6	20.5



The two methods we use for measuring the average length of stay have produced similar results. The first estimate results from jurisdictions computing the average length of stay of all inmates released during the quarter. That method indicated the average length of stay for the 3rd Quarter was 20.6 days. The second method is computed by dividing the total bookings for the quarter by the "bed days" (the ADP times the number of days in the quarter). That method produced an average length of stay estimate of 21.7 days. Both methods indicate that the average length of stay is declining. In the last half of the 1990s, the average length of stay was in the 23-24 day range.

Quarterly Results

	Q1	Q2	Q3	Q4	Average
2003	20.8	21.6	20.9	18.8	20.5
2004	20.8	17.6	20.6		19.7

Average Daily Population

Non-sentenced / Sentenced Male / Female

California County Jails - For Months Of July - September 2004

	Non-sentenced						Sentenced						Total
	Male		Female		Total		Male		Female		Total		
	#	%	#	%	#	%	#	%	#	%	#	%	
1 . Alameda Sheriff's Dept.	2,706	91%	281	9%	2,986	74%	904	84%	173	16%	1,077	26%	4,063
2 . Amador Sheriff's Dept.	43	83%	9	17%	52	59%	29	81%	7	19%	36	41%	88
3 . Butte Sheriff's Dept.	276	84%	53	16%	328	62%	175	85%	30	15%	205	38%	534
4 . Calaveras Sheriff's Dept.	42	74%	15	26%	57	74%	18	90%	2	10%	20	26%	77
5 . Colusa Sheriff's Dept.	21	90%	2	10%	23	52%	19	89%	2	11%	21	48%	45
6 . Contra Costa Sheriff's Dept.	953	86%	155	14%	1,107	66%	519	91%	53	9%	572	34%	1,679
7 . Del Norte Sheriff's Dept.	38	81%	9	19%	46	40%	59	85%	10	15%	69	60%	116
8 . El Dorado Sheriff's Dept.	128	87%	20	13%	148	48%	139	87%	22	13%	161	52%	309
9 . Fresno Sheriff's Dept.	2,075	89%	267	11%	2,343	75%	678	85%	119	15%	797	25%	3,140
10 . Glenn Sheriff's Dept.	67	85%	12	15%	78	60%	47	89%	6	11%	53	40%	131
11 . Humboldt Sheriff's Dept.	203	87%	31	13%	233	65%	110	87%	17	13%	127	35%	360
12 . Imperial Sheriff's Dept.	284	89%	36	11%	321	52%	279	94%	16	6%	296	48%	616
13 . Inyo Sheriff's Dept.	31	88%	4	12%	36	46%	35	83%	7	17%	42	54%	78
14 . Kern Sheriff's Dept.	1,259	87%	187	13%	1,446	67%	576	79%	149	21%	726	33%	2,171
15 . Kings Sheriff's Dept.	102	88%	14	12%	116	40%	147	83%	29	17%	176	60%	292
16 . Lake Sheriff's Dept.	83	91%	8	9%	92	36%	127	78%	35	22%	161	64%	253
17 . Lassen Sheriff's Dept.	38	76%	12	24%	50	56%	33	83%	7	17%	40	44%	90
18 . Los Angeles Sheriff's Dept.	11,594	88%	1,526	12%	13,120	77%	3,697	92%	307	8%	4,004	23%	17,124
19 . Madera Corrections Dept.	185	86%	31	14%	216	59%	141	93%	11	7%	152	41%	368
20 . Marin Sheriff's Dept.	237	88%	33	12%	270	87%	33	86%	5	14%	39	13%	308
21 . Mariposa Sheriff's Dept.	25	94%	2	6%	27	52%	20	80%	5	20%	25	48%	52
22 . Mendocino Sheriff's Dept.	151	83%	30	17%	182	67%	71	79%	19	21%	90	33%	271
23 . Merced Sheriff's Dept.	413	90%	46	10%	459	69%	181	86%	29	14%	211	31%	670
24 . Modoc Sheriff's Dept.	13	83%	3	17%	15	55%	9	71%	4	29%	13	45%	28
25 . Mono Sheriff's Dept.	13	81%	3	19%	16	50%	14	89%	2	11%	16	50%	31
26 . Monterey Sheriff's Dept.	548	87%	81	13%	629	57%	424	88%	58	12%	481	43%	1,110
27 . Napa Corrections Dept.	42	88%	6	12%	48	20%	164	85%	28	15%	193	80%	241
28 . Nevada Sheriff's Dept.	90	87%	13	13%	103	57%	68	86%	11	14%	79	43%	182
29 . Oakland Police Dept.	106	85%	19	15%	124	100%	0	0%	0	0%	0	0%	124
30 . Orange Sheriff's Dept.	2,328	88%	330	12%	2,659	46%	2,700	85%	461	15%	3,161	54%	5,820
31 . Placer Sheriff's Dept.	268	88%	38	12%	306	61%	162	83%	32	17%	194	39%	500
32 . Plumas Sheriff's Dept.	24	87%	4	13%	28	45%	28	84%	5	16%	33	55%	61
33 . Riverside Sheriff's Dept.	2,270	89%	280	11%	2,550	79%	597	87%	92	13%	688	21%	3,238
34 . Sacramento Sheriff's Dept.	1,538	87%	240	13%	1,778	50%	1,491	85%	259	15%	1,750	50%	3,528
35 . San Benito Sheriff's Dept.	72	87%	10	13%	82	63%	43	90%	5	10%	48	37%	130

Average Daily Population

Non-sentenced / Sentenced Male / Female

California County Jails - For Months Of July - September 2004

<u>Jurisdiction</u>	Non-sentenced						Sentenced						Total
	Male		Female		Total		Male		Female		Total		
	#	%	#	%	#	%	#	%	#	%	#	%	
36 . San Bernardino Sheriff's Dept.	3,538	88%	492	12%	4,030	74%	1,187	82%	258	18%	1,444	26%	5,474
37 . San Diego Sheriff's Dept.	2,776	85%	483	15%	3,259	63%	1,615	83%	335	17%	1,951	37%	5,209
38 . San Diego Work Furlough	0	0%	0	0%	0	0%	264	91%	26	9%	290	100%	290
39 . San Francisco Sheriff's Dept.	1,188	89%	154	11%	1,342	78%	329	86%	53	14%	382	22%	1,723
40 . San Joaquin Sheriff's Dept.	615	85%	106	15%	721	58%	419	80%	104	20%	523	42%	1,244
41 . San Luis Obispo Sheriff's Dept	168	84%	33	16%	201	44%	221	86%	37	14%	258	56%	459
42 . San Mateo Sheriff's Dept.	473	89%	59	11%	532	48%	492	85%	84	15%	576	52%	1,108
43 . Santa Ana Police Dept.	354	90%	37	10%	391	97%	12	90%	1	10%	14	3%	405
44 . Santa Barbara Sheriff's Dept.	529	86%	89	14%	619	65%	284	87%	42	13%	326	35%	945
45 . Santa Clara Corrections Dept.	2,487	86%	402	14%	2,889	70%	1,073	86%	168	14%	1,241	30%	4,130
46 . Santa Clara Probation Dept.	0	0%	0	0%	0	0%	171	80%	43	20%	214	100%	214
47 . Santa Cruz Sheriff's Dept.	251	87%	36	13%	287	47%	279	86%	47	14%	326	53%	613
48 . Shasta Sheriff's Dept.	215	85%	37	15%	253	70%	87	79%	23	21%	109	30%	362
49 . Siskiyou Sheriff's Dept.	80	87%	12	13%	92	88%	10	81%	2	19%	12	12%	104
50 . Solano Sheriff's Dept.	672	85%	116	15%	789	74%	220	81%	52	19%	272	26%	1,061
51 . Sonoma Sheriff's Dept.	525	86%	84	14%	609	54%	446	86%	70	14%	516	46%	1,125
52 . Stanislaus Sheriff's Dept.	660	86%	103	14%	763	66%	335	83%	67	17%	401	34%	1,164
53 . Sutter Sheriff's Dept.	158	88%	22	12%	180	68%	67	78%	19	22%	86	32%	266
54 . Tehama Sheriff's Dept.	87	82%	19	18%	106	54%	74	82%	16	18%	90	46%	196
55 . Trinity Sheriff's Dept.	18	74%	6	26%	25	61%	12	76%	4	24%	16	39%	40
56 . Tulare Sheriff's Dept.	669	89%	84	11%	753	62%	413	88%	57	12%	470	38%	1,224
57 . Tuolumne Sheriff's Dept.	54	85%	9	15%	63	51%	50	82%	11	18%	61	49%	124
58 . Ventura Sheriff's Dept.	730	89%	93	11%	823	53%	623	84%	121	16%	744	47%	1,567
59 . Ventura Work Furlough	0	0%	0	0%	0	0%	93	78%	26	22%	119	100%	119
60 . Yolo Sheriff's Dept.	305	85%	55	15%	360	86%	43	74%	15	26%	58	14%	418
61 . Yuba Sheriff's Dept.	272	78%	78	22%	350	88%	40	82%	9	18%	49	12%	400
Statewide	45,092	88%	6,416	12%	51,507	66%	22,599	86%	3,707	14%	26,307	34%	77,814

Jail Populations: Quarter 3, 2003 Versus Quarter 3, 2004

Jurisdiction	Qtr 3, 2003	Qtr 3, 2004	Qtr 3, 2004 Minus Qtr 3, 2003	Qtr 3, 2003 To Qtr 3, 2004 % +/-	% of Total Increase or Decrease	Cum %	Cum Total
Orange Sheriff's Dept.	5,040	5,820	780	15.5%	24.5%	24.46%	780
Los Angeles Sheriff's Dept.	16,766	17,124	358	2.1%	11.2%	35.69%	1,138
San Diego Sheriff's Dept.	4,985	5,210	225	4.5%	7.1%	42.74%	1,363
Imperial Sheriff's Dept.	393	616	223	56.7%	7.0%	49.73%	1,586
Sacramento Sheriff's Dept.	3,314	3,528	214	6.5%	6.7%	56.44%	1,800
Santa Clara Corrections Dept.	3,933	4,129	196	5.0%	6.1%	62.59%	1,996
San Bernardino Sheriff's Dept.	5,327	5,474	147	2.8%	4.6%	67.20%	2,143
Contra Costa Sheriff's Dept.	1,556	1,680	124	8.0%	3.9%	71.09%	2,267
Fresno Sheriff's Dept.	3,019	3,140	121	4.0%	3.8%	74.88%	2,388
Sonoma Sheriff's Dept.	1,030	1,125	95	9.2%	3.0%	77.86%	2,483
San Diego Work Furlough	212	291	79	37.3%	2.5%	80.34%	2,562
San Luis Obispo Sheriff's Dept.	404	460	56	13.9%	1.8%	82.09%	2,618
Madera Corrections Dept.	317	368	51	16.1%	1.6%	83.69%	2,669
Monterey Sheriff's Dept.	1,063	1,110	47	4.4%	1.5%	85.17%	2,716
Mendocino Sheriff's Dept.	225	271	46	20.4%	1.4%	86.61%	2,762
Lake Sheriff's Dept.	207	253	46	22.2%	1.4%	88.05%	2,808
Santa Barbara Sheriff's Dept.	902	945	43	4.8%	1.3%	89.40%	2,851
Santa Ana Police Dept.	371	404	33	8.9%	1.0%	90.44%	2,884
San Mateo Sheriff's Dept.	1,076	1,108	32	3.0%	1.0%	91.44%	2,916
Merced Sheriff's Dept.	637	669	32	5.0%	1.0%	92.44%	2,948
Oakland Police Dept.	93	124	31	33.3%	1.0%	93.41%	2,979
Nevada Sheriff's Dept.	158	182	24	15.2%	0.8%	94.17%	3,003
Ventura Work Furlough	100	119	19	19.0%	0.6%	94.76%	3,022
Marin Sheriff's Dept.	290	308	18	6.2%	0.6%	95.33%	3,040
Santa Clara Probation Dept.	197	214	17	8.6%	0.5%	95.86%	3,057
Tehama Sheriff's Dept.	179	195	16	8.9%	0.5%	96.36%	3,073
Mariposa Sheriff's Dept.	36	52	16	44.4%	0.5%	96.86%	3,089
Sutter Sheriff's Dept.	251	266	15	6.0%	0.5%	97.33%	3,104
Amador Sheriff's Dept.	76	88	12	15.8%	0.4%	97.71%	3,116
Placer Sheriff's Dept.	488	500	12	2.5%	0.4%	98.09%	3,128
San Benito Sheriff's Dept.	119	129	10	8.4%	0.3%	98.40%	3,138
Napa Corrections Dept.	231	241	10	4.3%	0.3%	98.71%	3,148
Butte Sheriff's Dept.	526	534	8	1.5%	0.3%	98.97%	3,156
Plumas Sheriff's Dept.	54	62	8	14.8%	0.3%	99.22%	3,164
Trinity Sheriff's Dept.	33	40	7	21.2%	0.2%	99.44%	3,171
Ventura Sheriff's Dept.	1,560	1,567	7	0.4%	0.2%	99.66%	3,178
Shasta Sheriff's Dept.	357	362	5	1.4%	0.2%	99.81%	3,183
Mono Sheriff's Dept.	28	31	3	10.7%	0.1%	99.91%	3,186
Siskiyou Sheriff's Dept.	101	104	3	3.0%	0.1%	100.00%	3,189
Calaveras Sheriff's Dept.	77	77	0	0.0%	0.0%	100.00%	3,189
Glenn Sheriff's Dept.	132	131	-1	-0.8%	0.2%	0.15%	-1
Modoc Sheriff's Dept.	31	28	-3	-9.7%	0.5%	0.60%	-4
Del Norte Sheriff's Dept.	119	116	-3	-2.5%	0.5%	1.05%	-7
Inyo Sheriff's Dept.	82	77	-5	-6.1%	0.8%	1.81%	-12
Kings Sheriff's Dept.	298	292	-6	-2.0%	0.9%	2.71%	-18
Sierra Sheriff's Dept.	7	7	-7	-100.0%	1.1%	3.77%	-25
Yuba Sheriff's Dept.	406	399	-7	-1.7%	1.1%	4.82%	-32
Santa Cruz Sheriff's Dept.	622	614	-8	-1.3%	1.2%	6.02%	-40
Alameda Sheriff's Dept.	4,071	4,063	-8	-0.2%	1.2%	7.23%	-48
Yolo Sheriff's Dept.	426	417	-9	-2.1%	1.4%	8.58%	-57
Tulare Sheriff's Dept.	1,235	1,223	-12	-1.0%	1.8%	10.39%	-69
Tuolumne Sheriff's Dept.	137	123	-14	-10.2%	2.1%	12.50%	-83
El Dorado Sheriff's Dept.	323	309	-14	-4.3%	2.1%	14.61%	-97
Colusa Sheriff's Dept.	60	45	-15	-25.0%	2.3%	16.87%	-112
Stanislaus Sheriff's Dept.	1,186	1,165	-21	-1.8%	3.2%	20.03%	-133
Humboldt Sheriff's Dept.	390	361	-29	-7.4%	4.4%	24.40%	-162
Solano Sheriff's Dept.	1,091	1,061	-30	-2.7%	4.5%	28.92%	-192
Lassen Sheriff's Dept.	124	90	-34	-27.4%	5.1%	34.04%	-226
Kern Sheriff's Dept.	2,238	2,172	-66	-2.9%	9.9%	43.98%	-292
San Joaquin Sheriff's Dept.	1,327	1,244	-83	-6.3%	12.5%	56.48%	-375
Riverside Sheriff's Dept.	3,356	3,238	-118	-3.5%	17.8%	74.25%	-493
San Francisco Sheriff's Dept.	1,895	1,724	-171	-9.0%	25.8%	100.00%	-664
	75,287	77,812	2,525				
		Total Increase:	3,189				
		Total Decrease:	-664				

Note: Totals subject to slight variation due to rounding

Interpretation of Table:
JAIL POPULATIONS: 3rd Quarter '03 versus 3rd Quarter '04

This table:

- summarizes the ADP results for the 62 jurisdictions in California reporting data from Type II, III, and IV jails;
- summarizes jurisdiction ADP results for the most recent quarter (Column C);
- compares jurisdiction ADP for the most recent quarter with the same quarter last year (Column B);
- ranks the jurisdictions in terms of gains or losses in ADP from high to low (Column D);
- lists the percentage growth or decline in ADP for each jurisdiction (Column E);
- lists the percentage of the overall State increase or decrease in ADP that is represented by each jurisdiction (Column F);
- lists, by jurisdiction, the cumulative percentage increase and decrease in the State ADP starting with the jurisdiction with the highest percentage of the increase and proceeding to the jurisdiction with the highest percentage of the decrease (Column G);
- lists, by jurisdiction, the cumulative total increase and decrease in the State ADP starting with the jurisdiction with the highest increase and proceeding to the jurisdiction with the biggest decrease (Column H); and,
- lists the jurisdictions that experienced decreases in their ADP as shaded.

Some important conclusions from this table are:

1. The two numbers at the bottom indicate the "total increase" in ADP (in this case 3,189) and "total decrease" in ADP (-664). In other words, the jurisdictions experiencing increases had a total increase of 3,189 ADP; and the jurisdictions experiencing decreases had a total decrease of 664 ADP. Subtracting 664 from 3,189 produces the overall increase of 2,525 between the third quarter of 2003 and the third quarter of 2004.
2. The Orange County ADP increase of 780 is 24.5% of the total increase of 3,189. Thirty-nine jurisdictions had increases (down to Siskiyou Sheriff's Department) with 1 jurisdiction reporting no increase (Calaveras Sheriff's Department). When you get to Calaveras Sheriff's Department, you have accounted for 100% of the increases (100% of the cumulative total of 3,189).
3. Jurisdictions that experienced a decrease in ADP are listed from smallest decrease to largest decrease (Glenn Sheriff's Department to San Francisco Sheriff's Department). When you get to the bottom of the table, you have accounted for 100% of the total decreases of 664 inmates.
4. The cumulative percentage of ADP increase for the top four jurisdictions (Orange Sheriff's Department to Imperial Sheriff's Department) is 49.73%. In other words, four jurisdictions accounted for about 50% of the total ADP increase. Two jurisdictions (Riverside Sheriff's Department and San Francisco Sheriff's Department) account for about 44% of the decreases.