



JAIL PROFILE SURVEY

**FOURTH QUARTER CALENDAR YEAR 2013
SURVEY RESULTS**



EXPLANATION OF RESULTS

The following pages contain the Jail Profile Survey (JPS) results for the Fourth Quarter of Calendar Year 2013. Page 2 contains the quarterly totals based upon the monthly and quarterly data submitted to us by the participating jurisdictions. Pages 3 and 4 show the trend data for the last 10 years on variables we have been tracking. The information below provides explanations and clarifications of the data presented.

Page 2

- Unless otherwise noted, projected totals are based upon the average per day for the variable in question. For example, there was an average of 82,248 inmates per day in local jails (excluding Type I's) during October through December 2013.
- For some variables (other than "ADP"), we did not receive complete data from all jurisdictions. In such instances, we used statistical procedures to estimate the statewide total.
- The number of "Bookings Per Month" is the average of the monthly totals for October, November, and December 2013.
- For the following variables, the numbers presented are the totals as of the mid-quarter (i.e., November 15, 2013): "Pretrial Release", "Early Release", "2 Strike Inmates", "3 Strike Inmates", "Felony Warrants", "Misdemeanor Warrants", "Juveniles in Custody", and "Criminal / Illegal Aliens [undocumented aliens]".
- "Assaults On Staff" are defined as the total number of serious inmate assaults on staff (resulting in a crime report), statewide, during the Fourth Quarter of Calendar Year 2013.
- Note: Totals are subject to slight variation due to rounding.

Pages 3 and 4

- The data in the 10-Year Summary tables are based upon survey data that the Board of State and Community Corrections (BSCC) has gathered since the early 1980's.
- Prior to 1995, yearly averages were reported on an annual basis. Yearly averages from 1996 to the present time have been the average of the 12 calendar months. (In 1995, the yearly figure reported is the fourth quarter average, since we do not have data from the first three quarters.)

Please note: Each quarter, every county with Type II, III, and IV detention facilities submits their data to the BSCC. While we make every effort to review data for accuracy, including contacting individual counties for clarification, the BSCC cannot be responsible for data reporting errors made at the county level. While the county-specific data presented in this report are current as of July 24, 2014, all data are available for updates as needed.

BOARD OF STATE AND COMMUNITY CORRECTIONS JAIL PROFILE SURVEY

Reporting Period: October to December, 2013

County Jail Populations

ADP ^a	82,248 ^b
Holding Areas	1,314
Average "Under the Roof" ^c	83,562 ^d
Highest One Day Count	86,482 ^e

County Jail Populations

Felony	72,203
Misdemeanor	10,045
Total	82,248
Non-Sentenced Males	45,432
Non-Sentenced Females	6,032
Sentenced Males	26,039
Sentenced Females	4,745
Total	82,248
Maximum Security Inmates	23,320
Medium Security Inmates	34,638
Minimum Security Inmates	24,290
Total	82,248

Inmates From Other Jurisdictions

Housed on Federal Contract	3,411
Housed on Contract with CDC	0
From Other Counties on Contract	77
Awaiting Transport	1,569
Total	5,057

Special Use Beds

Medical Beds	1,156
Mental Health Beds	3,044

Released Per Month Due to Lack of Space

Pretrial Release	7,968 ^f
Early Release	5,579 ^f
Total	13,547

Inmates with 2 and 3 Strikes

2 Strike Inmates	4,613 ^g
3 Strike Inmates	1,299 ^g
Total	5,912

Unservd Warrants

Felony Warrants	251,718 ^g
Misdemeanor Warrants	1,494,743 ^g
Total	1,746,461

Other Jail Profile Survey Variables

Bookings Per Month	84,039 ^f
Juveniles in Custody	0 ^f
Criminal / Illegal Aliens	9,126
Assaults On Staff	402

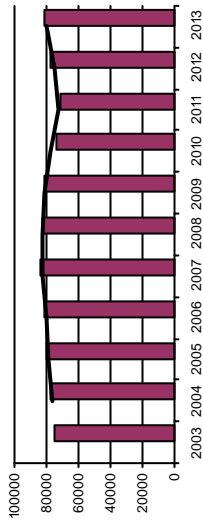
- a. The Average Daily Population for all jurisdictions (excluding Type I's) does not include inmates in holding areas.
- b. Unless otherwise indicated, the numbers reported are the average across the days in the quarter.
- c. "Under the Roof" is the sum of the Average Daily Population plus the average daily number of inmates in Holding Areas.
- d. Totals may not be the exact sum of the subtotals due to rounding.
- e. The sum of all Highest One Day inmate population counts from all jurisdictions.
- f. These data are collected on a monthly basis, this figure is an average of the total numbers collected each month during this quarter.
- g. These data are one-day snapshots collected at the end of the quarter.

Jail Profile Survey

2013

Average Daily Population

10 Year Summary										
2003	2004	2005	2006	2007	2008	2009	2010	2011	2012	2013
75,243	76,887	79,705	81,104	83,184	82,397	80,865	73,444	71,015	77,818	



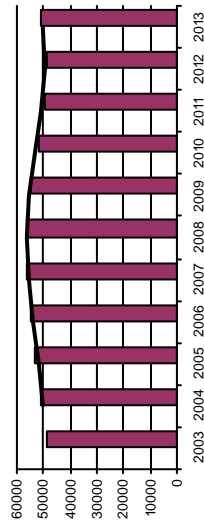
The Average Daily Population (ADP) of 82,248 for the fourth quarter 2013 represents a slight increase over the third quarter 2013, and reflects a tenth consecutive quarterly increase in ADP. The ADP for the fourth quarter 2013 represents a 2.6% increase over the fourth quarter 2012.

Quarterly Results

	Q1	Q2	Q3	Q4	Average
2012	74,527	77,340	79,229	80,136	77,818
2013	80,841	82,019	82,145	82,248	81,818

Non-sentenced ADP

10 Year Summary										
2003	2004	2005	2006	2007	2008	2009	2010	2011	2012	2013
49,121	50,715	53,357	54,585	56,571	56,232	54,589	52,059	49,705	48,975	



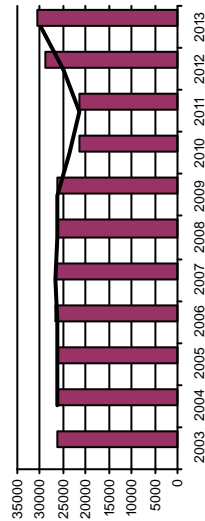
The Non-Sentenced ADP was 51,465 for the fourth quarter 2013, representing a slight decrease from the third quarter 2013 and an increase of 2.3% over the fourth quarter 2012.

Quarterly Results

	Q1	Q2	Q3	Q4	Average
2012	47,675	48,189	49,703	50,309	48,975
2013	50,574	51,400	51,731	51,465	51,296

Sentenced ADP

10 Year Summary										
2003	2004	2005	2006	2007	2008	2009	2010	2011	2012	2013
26,121	26,171	26,347	26,519	26,613	26,165	26,277	21,385	21,310	28,844	



The Sentenced ADP was 30,784 for the fourth quarter 2013, representing a 1.2% increase over the third quarter 2013 and an increase of 3.2% over the fourth quarter 2012.

Quarterly Results

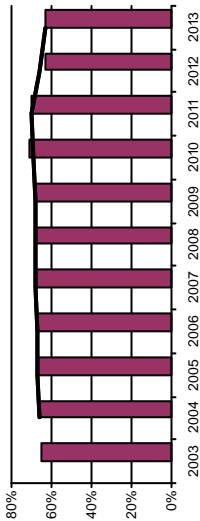
	Q1	Q2	Q3	Q4	Average
2012	26,853	29,152	29,526	29,827	28,844
2013	30,268	30,619	30,414	30,784	30,522

Jail Profile Survey

2013

Percentage Non-sentenced

10 Year Summary									
2003	2004	2005	2006	2007	2008	2009	2010	2011	2012
65%	66%	67%	67%	68%	68%	68%	71%	70%	63%



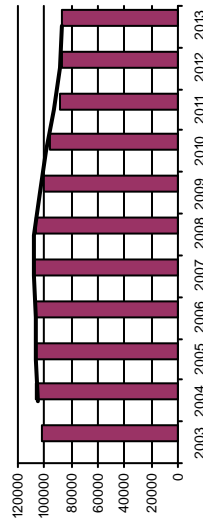
The Percentage of Non-Sentenced inmates for the fourth quarter 2013 remained unchanged at 63% from the third quarter 2013. In addition, the Percentage of Non-Sentenced inmates has remained the same since the third quarter 2012.

Quarterly Results

	Q1	Q2	Q3	Q4	Average
2012	64%	62%	63%	63%	63%
2013	63%	63%	63%	63%	63%

Average Number of Persons Booked Per Month

10 Year Summary									
2003	2004	2005	2006	2007	2008	2009	2010	2011	2012
102,217	106,862	107,120	106,868	108,238	107,086	101,223	96,460	88,614	87,560



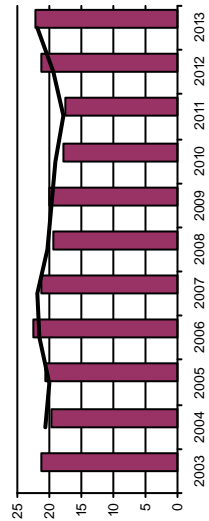
The Average Number of Persons Booked per Month in the fourth quarter 2013 of 84,039 represents a decrease of 6.8% from the third quarter 2013 and an increase of 1.3% over the fourth quarter 2012.

Quarterly Results

	Q1	Q2	Q3	Q4	Average
2012	86,851	89,373	91,084	82,946	87,560
2013	84,559	88,101	90,142	84,039	86,718

Average Length Of Stay

10 Year Summary									
2003	2004	2005	2006	2007	2008	2009	2010	2011	2012
21.2	19.8	20.5	22.5	21.4	19.4	20.0	17.9	17.5	21.3



The Average Length of Stay (ALS) of 22.6 days in the fourth quarter 2013 increased 3.7% from 21.8 days in the third quarter 2013. The ALS for the fourth quarter 2013 represents a 5.1% increase over the ALS of 21.5 days for the fourth quarter 2012.

Quarterly Results

	Q1	Q2	Q3	Q4	Average
2012	23.1	20.3	20.3	21.5	21.3
2013	21.3	22.8	21.8	22.6	22.1

Average Daily Population

Non-sentenced / Sentenced Male / Female

California County Jails - For Months Of October - December 2013

Jurisdiction	Non-sentenced			Sentenced			Total						
	Male	Female	Total	Male	Female	Total							
	#	%	#	%	#	%							
1. Alameda Sheriff's Dept.	2,401	91%	233	9%	2,634	77%	715	78	10%	794	23%	3,428	
2. Amador Sheriff's Dept.	39	79%	10	21%	50	52%	35	79%	10	21%	45	48%	95
3. Butte Sheriff's Dept.	329	87%	47	13%	376	64%	185	86%	31	14%	216	36%	592
4. Calaveras Sheriff's Dept.	34	87%	5	13%	39	55%	29	88%	4	12%	33	45%	72
5. Colusa Sheriff's Dept.	34	82%	7	18%	41	61%	21	77%	6	23%	27	39%	68
6. Contra Costa Sheriff's Dept.	1,052	87%	160	13%	1,212	77%	344	94%	21	6%	365	23%	1,577
7. Del Norte Sheriff's Dept.	31	82%	7	18%	38	46%	29	66%	15	34%	44	54%	82
8. El Dorado Sheriff's Dept.	163	85%	28	15%	191	55%	131	83%	27	17%	157	45%	348
9. Fresno Sheriff's Dept.	1,867	93%	150	7%	2,016	68%	879	92%	73	8%	952	32%	2,968
10. Glenn Sheriff's Dept.	60	87%	9	13%	70	67%	27	80%	7	20%	34	33%	104
11. Humboldt Sheriff's Dept.	209	86%	34	14%	243	66%	110	87%	17	13%	126	34%	370
12. Imperial Sheriff's Dept.	223	88%	29	12%	253	51%	210	87%	32	13%	242	49%	495
13. Inyo Sheriff's Dept.	25	90%	3	10%	27	39%	35	83%	7	17%	43	61%	70
14. Kern Sheriff's Dept.	1,544	89%	194	11%	1,737	67%	733	87%	111	13%	844	33%	2,581
15. Kings Sheriff's Dept.	242	85%	42	15%	285	48%	244	80%	61	20%	306	52%	590
16. Lake Sheriff's Dept.	147	86%	24	14%	170	53%	123	81%	29	19%	152	47%	323
17. Lassen Sheriff's Dept.	39	79%	11	21%	50	37%	71	84%	14	16%	85	63%	135
18. Los Angeles Sheriff's Dept.	8,766	88%	1,185	12%	9,951	54%	7,198	84%	1,366	16%	8,565	46%	18,515
19. Madera Corrections Dept.	341	86%	55	14%	396	87%	50	87%	7	13%	58	13%	453
20. Marin Sheriff's Dept.	194	89%	25	11%	219	79%	45	79%	12	21%	57	21%	276
21. Mariposa Sheriff's Dept.	26	85%	5	15%	31	61%	17	85%	3	15%	20	39%	51
22. Mendocino Sheriff's Dept.	136	87%	20	13%	157	63%	78	84%	15	16%	92	37%	249
23. Merced Sheriff's Dept.	535	90%	62	10%	598	77%	155	89%	19	11%	174	23%	771
24. Modoc Sheriff's Dept.	13	93%	1	7%	14	53%	11	86%	2	14%	12	47%	26
25. Mono Sheriff's Dept.	13	81%	3	19%	16	44%	16	82%	4	18%	20	56%	36
26. Monterey Sheriff's Dept.	635	87%	91	13%	726	76%	190	81%	44	19%	234	24%	961
27. Napa Corrections Dept.	159	88%	21	12%	180	73%	59	87%	9	13%	68	27%	248
28. Nevada Sheriff's Dept.	142	80%	35	20%	178	87%	18	69%	8	31%	27	13%	204
29. Orange Sheriff's Dept.	3,128	88%	436	12%	3,565	52%	2,812	84%	522	16%	3,335	48%	6,900
30. Placer Sheriff's Dept.	366	88%	51	12%	417	65%	188	84%	37	16%	225	35%	642
31. Plumas Sheriff's Dept.	14	75%	5	25%	19	40%	25	89%	3	11%	28	60%	47
32. Riverside Sheriff's Dept.	2,433	89%	308	11%	2,742	70%	1,022	86%	162	14%	1,184	30%	3,926
33. Sacramento Sheriff's Dept.	2,293	93%	175	7%	2,468	58%	1,455	82%	323	18%	1,778	42%	4,246
34. San Benito Sheriff's Dept.	78	88%	11	12%	89	71%	24	66%	12	34%	36	29%	125
35. San Bernardino Sheriff's Dept.	3,812	88%	505	12%	4,317	75%	1,287	87%	186	13%	1,473	25%	5,789

Average Daily Population

Non-sentenced / Sentenced Male / Female

California County Jails - For Months Of October - December 2013

Jurisdiction	Non-sentenced			Sentenced			Total
	Male	Female	Total	Male	Female	Total	
	#	#	%	#	#	%	
36. San Diego Sheriff's Dept.	2,676	445	14%	2,238	405	15%	5,764
37. San Diego Work Furlough	4	1	20%	237	76	24%	318
38. San Francisco Sheriff's Dept.	952	99	9%	175	21	11%	1,248
39. San Joaquin Sheriff's Dept.	763	93	11%	468	75	14%	1,400
40. San Luis Obispo Sheriff's Dept.	303	56	16%	275	48	15%	683
41. San Mateo Sheriff's Dept.	584	71	11%	343	62	15%	1,060
42. Santa Ana Police Dept.	350	80	19%	0	0	0%	430
43. Santa Barbara Sheriff's Dept.	615	124	17%	216	43	17%	998
44. Santa Clara Corrections Dept.	2,578	356	12%	947	199	17%	4,081
45. Santa Cruz Sheriff's Dept.	300	34	10%	106	22	17%	462
46. Shasta Sheriff's Dept.	202	39	16%	77	10	11%	328
47. Sierra Sheriff's Dept.	3	1	25%	0	1	75%	5
48. Siskiyou Sheriff's Dept.	67	7	9%	21	2	7%	97
49. Solano Sheriff's Dept.	545	82	13%	261	34	12%	922
50. Sonoma Sheriff's Dept.	476	69	13%	471	99	17%	1,114
51. Stanislaus Sheriff's Dept.	814	113	12%	236	39	14%	1,202
52. Sutter Sheriff's Dept.	159	24	13%	26	17	39%	226
53. Tehama Sheriff's Dept.	85	12	13%	67	9	12%	174
54. Trinity Sheriff's Dept.	29	4	12%	16	1	6%	50
55. Tulare Sheriff's Dept.	918	115	11%	493	113	19%	1,640
56. Tuolumne Sheriff's Dept.	83	25	23%	22	8	22%	139
57. Ventura Sheriff's Dept.	835	121	13%	520	143	22%	1,619
58. Ventura Work Furlough	0	0	0%	63	12	16%	76
59. Yolo Sheriff's Dept.	254	36	12%	146	16	10%	452
60. Yuba Sheriff's Dept.	312	37	11%	40	13	25%	401
Statewide	45,433	6,032	12%	26,039	4,745	15%	82,248
			63%			37%	
				26,039	4,745		30,784

Jail Populations: Quarter 4, 2012 Versus Quarter 4, 2013

Jurisdiction	Qtr 4, 2012	Qtr 4, 2013	Qtr 4, 2013 Minus Qtr 4, 2012	Qtr 4, 2012 To Qtr 4, 2013 % +/-	% of Total Increase or Decrease	Cum %	Cum Total
San Diego Sheriff's Dept.	5,168	5,764	596	11.5%	21.2%	21.25%	596
Orange Sheriff's Dept.	6,522	6,900	378	5.8%	13.5%	34.72%	974
Santa Clara Corrections Dept.	3,710	4,080	370	10.0%	13.2%	47.91%	1,344
Sacramento Sheriff's Dept.	3,968	4,246	278	7.0%	9.9%	57.83%	1,622
San Bernardino Sheriff's Dept.	5,609	5,790	181	3.2%	6.5%	64.28%	1,803
Fresno Sheriff's Dept.	2,803	2,968	165	5.9%	5.9%	70.16%	1,968
San Diego Work Furlough	217	318	101	46.5%	3.6%	73.76%	2,069
Kings Sheriff's Dept.	490	590	100	20.4%	3.6%	77.33%	2,169
San Mateo Sheriff's Dept.	966	1,059	93	9.6%	3.3%	80.64%	2,262
Sonoma Sheriff's Dept.	1,036	1,115	79	7.6%	2.8%	83.46%	2,341
Ventura Sheriff's Dept.	1,541	1,619	78	5.1%	2.8%	86.24%	2,419
Alameda Sheriff's Dept.	3,352	3,428	76	2.3%	2.7%	88.95%	2,495
Stanislaus Sheriff's Dept.	1,145	1,202	57	5.0%	2.0%	90.98%	2,552
Placer Sheriff's Dept.	600	642	42	7.0%	1.5%	92.48%	2,594
Santa Cruz Sheriff's Dept.	423	462	39	9.2%	1.4%	93.87%	2,633
Riverside Sheriff's Dept.	3,907	3,926	19	0.5%	0.7%	94.55%	2,652
Solano Sheriff's Dept.	903	922	19	2.1%	0.7%	95.22%	2,671
Nevada Sheriff's Dept.	189	205	16	8.5%	0.6%	95.79%	2,687
Lake Sheriff's Dept.	308	323	15	4.9%	0.5%	96.33%	2,702
San Luis Obispo Sheriff's Dept.	668	682	14	2.1%	0.5%	96.83%	2,716
Mariposa Sheriff's Dept.	39	51	12	30.8%	0.4%	97.25%	2,728
Yolo Sheriff's Dept.	439	451	12	2.7%	0.4%	97.68%	2,740
Siskiyou Sheriff's Dept.	87	98	11	12.6%	0.4%	98.07%	2,751
Lassen Sheriff's Dept.	125	135	10	8.0%	0.4%	98.43%	2,761
Madera Corrections Dept.	446	454	8	1.8%	0.3%	98.72%	2,769
Contra Costa Sheriff's Dept.	1,571	1,577	6	0.4%	0.2%	98.93%	2,775
Glenn Sheriff's Dept.	97	103	6	6.2%	0.2%	99.14%	2,781
Plumas Sheriff's Dept.	43	48	5	11.6%	0.2%	99.32%	2,786
Mono Sheriff's Dept.	32	36	4	12.5%	0.1%	99.47%	2,790
Humboldt Sheriff's Dept.	366	370	4	1.1%	0.1%	99.61%	2,794
Colusa Sheriff's Dept.	65	67	2	3.1%	0.1%	99.68%	2,796
Calaveras Sheriff's Dept.	69	71	2	2.9%	0.1%	99.75%	2,798
Amador Sheriff's Dept.	93	95	2	2.2%	0.1%	99.82%	2,800
Marin Sheriff's Dept.	274	276	2	0.7%	0.1%	99.89%	2,802
Tuolumne Sheriff's Dept.	137	138	1	0.7%	0.0%	99.93%	2,803
Sierra Sheriff's Dept.	4	5	1	25.0%	0.0%	99.96%	2,804
Shasta Sheriff's Dept.	328	329	1	0.3%	0.0%	100.00%	2,805
Butte Sheriff's Dept.	592	591	-1	-0.2%	0.1%	0.14%	-1
Modoc Sheriff's Dept.	30	26	-4	-13.3%	0.6%	0.72%	-5
Inyo Sheriff's Dept.	74	70	-4	-5.4%	0.6%	1.30%	-9
Yuba Sheriff's Dept.	405	400	-5	-1.2%	0.7%	2.02%	-14
Napa Corrections Dept.	252	247	-5	-2.0%	0.7%	2.74%	-19
San Benito Sheriff's Dept.	134	125	-9	-6.7%	1.3%	4.04%	-28
Trinity Sheriff's Dept.	59	50	-9	-15.3%	1.3%	5.34%	-37
Mendocino Sheriff's Dept.	258	249	-9	-3.5%	1.3%	6.64%	-46
Los Angeles Sheriff's Dept.	18,526	18,516	-10	-0.1%	1.4%	8.08%	-56
Del Norte Sheriff's Dept.	93	81	-12	-12.9%	1.7%	9.81%	-68
Sutter Sheriff's Dept.	239	226	-13	-5.4%	1.9%	11.69%	-81
Santa Barbara Sheriff's Dept.	1,011	998	-13	-1.3%	1.9%	13.56%	-94
Imperial Sheriff's Dept.	508	494	-14	-2.8%	2.0%	15.58%	-108
Santa Ana Police Dept.	446	430	-16	-3.6%	2.3%	17.89%	-124
Ventura Work Furlough	92	76	-16	-17.4%	2.3%	20.20%	-140
Tulare Sheriff's Dept.	1,663	1,640	-23	-1.4%	3.3%	23.52%	-163
Tehama Sheriff's Dept.	198	173	-25	-12.6%	3.6%	27.13%	-188
San Joaquin Sheriff's Dept.	1,425	1,400	-25	-1.8%	3.6%	30.74%	-213
El Dorado Sheriff's Dept.	382	348	-34	-8.9%	4.9%	35.64%	-247
Kern Sheriff's Dept.	2,619	2,581	-38	-1.5%	5.5%	41.13%	-285
Merced Sheriff's Dept.	823	772	-51	-6.2%	7.4%	48.48%	-336
Monterey Sheriff's Dept.	1,058	961	-97	-9.2%	14.0%	62.48%	-433
San Francisco Sheriff's Dept.	1,508	1,248	-260	-17.2%	37.5%	100.00%	-693
	80,135	82,247	2,112	Note: Totals subject to slight variation due to rounding			
		Total Increase:	2,805				
		Total Decrease:	-693				

INTERPRETATION OF TABLE

Jail Populations: Fourth Quarter Calendar Year 2012 versus Fourth Quarter Calendar Year 2013 (page 7)

This table:

- summarizes the Average Daily Population (ADP) results for the 60 jurisdictions in California reporting data from Type II, III, and IV jails;
- summarizes jurisdiction ADP results for the most recent quarter (third column from left);
- compares jurisdiction ADP for the most recent quarter with the same quarter last year (second column from left);
- ranks the jurisdictions in terms of gains or losses in ADP from high to low (fourth column from left);
- lists the percentage of growth or decline in ADP for each jurisdiction (fifth column from left);
- lists the percentage of the overall state increase or decrease in ADP that is represented by each jurisdiction (sixth column from left);
- lists by jurisdiction the cumulative percentage increase and decrease in the state ADP (seventh column from left), starting with the jurisdiction with the largest percentage of increase and proceeding to the jurisdiction with the largest percentage of decrease;
- lists by jurisdiction the cumulative total increase and decrease in the state ADP (eighth column from left), starting with the jurisdiction with the highest increase first and proceeding to the jurisdiction with the highest decrease last; and,
- lists the jurisdictions that experienced decreases in their ADP as shaded.

Some important conclusions from this table are:

1. The two numbers at the bottom indicate the “Total Increase” in ADP (in this case 2,805) and “Total Decrease” in ADP (693). Specifically, the jurisdictions experiencing increases had a total increase of 2,805 ADP, and the jurisdictions experiencing decreases had a total decrease of 693 ADP. Subtracting 693 from 2,805 produces the overall increase of 2,112 between the Fourth Quarter of Calendar Year 2012 and the Fourth Quarter of Calendar Year 2013.
2. The San Diego Sheriff’s Department’s ADP increase of 596 is 21.2% of the total increase of 2,805. Thirty-seven jurisdictions had increases (San Diego Sheriff’s Department to Shasta Sheriff’s Department); when you get to Shasta Sheriff’s Department, you have accounted for 100% of the increase (100% of the cumulative total of 2,805).
3. Jurisdictions that experienced a decrease in ADP are listed from smallest decrease to largest decrease (Butte Sheriff’s Department to San Francisco Sheriff’s Department). When you get to the bottom of the table, you have accounted for 100% of the total decrease of 693 inmates.
4. The cumulative percentage of ADP increase for the top four jurisdictions (San Diego Sheriff’s Department, Orange Sheriff’s Department, Santa Clara Corrections Department, and Sacramento Sheriff’s Department) is 57.8%. Four jurisdictions (Kern Sheriff’s Department, Merced Sheriff’s Department, Monterey Sheriff’s Department, and San Francisco Sheriff’s Department) account for 64.4% of the total decrease.