

JAIL PROFILE SURVEY

.....

Second Quarter Calendar Year 2013

Survey Results



**BOARD OF STATE AND
COMMUNITY CORRECTIONS**

FACILITIES STANDARDS OPERATIONS & CONSTRUCTION DIVISION
600 Bercut Drive, Sacramento, CA 95811
916.445.5073 **PHONE**
916.327.3317 **FAX**
bscc.ca.gov

Leadership



Excellence



Support

EXPLANATION OF RESULTS

The following pages contain the Jail Profile Survey results for the Second Quarter of Calendar Year 2013. Page 2 contains the quarterly totals based upon the monthly and quarterly data submitted to us by the participating jurisdictions. Pages 3 and 4 show the trend data for the last ten years on variables we have been tracking. The below information provides explanations and clarifications of the data presented.

Page 2

- Unless otherwise noted, “projected totals” are based upon the average per day for the variable in question. For example, there was an average of 82,019 inmates per day in local jails (excluding Type I’s) during the three-month span of April through June 2013.
- For some variables (other than ADP), we did not receive complete data from all jurisdictions. In such instances, we used statistical procedures to estimate the statewide total.
- The number of “Bookings” is the average of the monthly totals for April, May, and June 2013.
- For the following variables, the numbers presented are the totals as of the mid-quarter (i.e., May 15, 2013): Pretrial Release, Early Release, 2 and 3 Strikes, Felony Warrants, Misdemeanor Warrants, Juveniles in Custody and Undocumented Aliens.
- Assaults are defined as the total number of serious inmate assaults on staff (resulting in a crime report), statewide, during the Second Quarter of Calendar Year 2013.
- Note: Totals are subject to slight variation due to rounding.

Pages 3 and 4

- The data in the 10-Year Summary tables are based upon survey data which the Board of State and Community Corrections has gathered since the early 1980’s.
- Prior to 1995, yearly averages were reported on an annual basis. Yearly averages from 1996 to the present time have been the average of the 12 calendar months. In 1995, the yearly figure reported is the fourth quarter average, since we do not have data from the first three quarters.

Please note: Each quarter, every county with Type II, III, and IV detention facilities submits their data to the BSCC. While we make every effort to review data for accuracy, including contacting individual counties for clarification, the BSCC cannot be responsible for data reporting errors made at the county level. While the county specific data presented in this report is current as of October 15, 2013, all data are available for updates as needed.

BOARD OF STATE AND COMMUNITY CORRECTIONS JAIL PROFILE SURVEY

Reporting Period: April to June, 2013

County Jail Populations

ADP ^a	82,019 ^b
Holding Areas	1,321
Average "Under the Roof" ^c	83,340 ^d
Highest One Day Count	85,608 ^e

County Jail Populations

Felony	69,889
Misdemeanor	12,130
Total	82,019
Non-Sentenced Males	45,398
Non-Sentenced Females	6,002
Sentenced Males	26,058
Sentenced Females	4,561
Total	82,019
Maximum Security Inmates	24,170
Medium Security Inmates	36,444
Minimum Security Inmates	21,405
Total	82,019

Inmates From Other Jurisdictions

Housed on Federal Contract	3,351
Housed on Contract with CDC	11
From Other Counties on Contract	59
Awaiting Transport	1,424
Total	4,845

Special Use Beds

Medical Beds	1,249
Mental Health Beds	3,385

Released Per Month Due to Lack of Space

Pretrial Release	6,829 ^f
Early Release	6,719 ^f
Total	13,548

Inmates with 2 and 3 Strikes

2 Strike Inmates	3,789 ^g
3 Strike Inmates	1,704 ^g
Total	5,493

Unservd Warrants

Felony Warrants	243,639 ^g
Misdemeanor Warrants	1,430,761 ^g
Total	1,674,400

Other Jail Profile Survey Variables

Bookings Per Month	88,101 ^f
Juveniles in Custody	0 ^f
Criminal / Illegal Aliens	9,656
Assaults On Staff	377

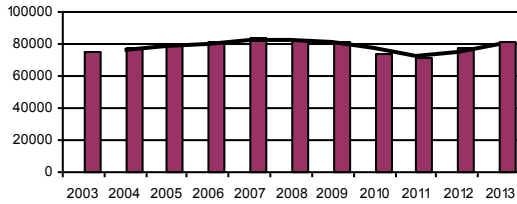
- a. The Average Daily Population for all jurisdictions (excluding Type I's) does not include inmates in holding areas.
- b. Unless otherwise indicated, the numbers reported are the average across the days in the quarter.
- c. "Under the Roof" is the sum of the Average Daily Population plus the average daily number of inmates in Holding Areas.
- d. Totals may not be the exact sum of the subtotals due to rounding.
- e. The sum of all Highest One Day inmate population counts from all jurisdictions.
- f. These data are collected on a monthly basis, this figure is an average of the total numbers collected each month during this quarter.
- g. These data are one-day snapshots collected at the end of the quarter.

Jail Profile Survey

2013

Average Daily Population

10 Year Summary									
2003	2004	2005	2006	2007	2008	2009	2010	2011	2012
75,243	76,887	79,705	81,104	83,184	82,397	80,865	73,444	71,015	77,818



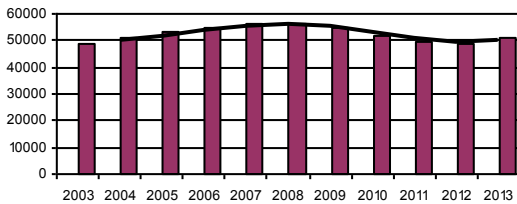
The Average Daily Population (ADP) of 82,019 for the second quarter 2013 represents an increase of 1.5% over the first quarter 2013 and reflects an eighth consecutive quarterly increase in ADP. The ADP for the second quarter 2013 represents a 6% increase over the second quarter 2012.

Quarterly Results

	Q1	Q2	Q3	Q4	Average
2012	74,527	77,340	79,229	80,136	77,818
2013	80,841	82,019			81,433

Non-sentenced ADP

10 Year Summary									
2003	2004	2005	2006	2007	2008	2009	2010	2011	2012
49,121	50,715	53,357	54,585	56,571	56,232	54,589	52,059	49,705	48,975



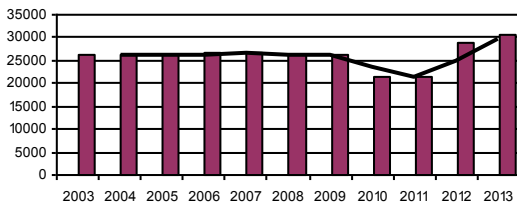
The Non-Sentenced ADP was 51,400 for the second quarter 2013 representing a 1.6% increase over the first quarter 2013 and an increase of 6.7% over the second quarter 2012.

Quarterly Results

	Q1	Q2	Q3	Q4	Average
2012	47,675	48,189	49,703	50,309	50,990
2013	50,574	51,400			48,975

Sentenced ADP

10 Year Summary									
2003	2004	2005	2006	2007	2008	2009	2010	2011	2012
26,121	26,171	26,347	26,519	26,613	26,165	26,277	21,385	21,310	28,844



The Sentenced ADP was 30,619 for the second quarter 2013 representing an increase of 1.2% over the first quarter 2013 and an increase of 5% over the second quarter of 2012.

Quarterly Results

	Q1	Q2	Q3	Q4	Average
2012	26,853	29,152	29,526	29,827	28,844
2013	30,268	30,619			30,444

Jail Profile Survey

2013

Percentage Non-sentenced

10 Year Summary									
2003	2004	2005	2006	2007	2008	2009	2010	2011	2012
65%	66%	67%	67%	68%	68%	68%	71%	70%	63%



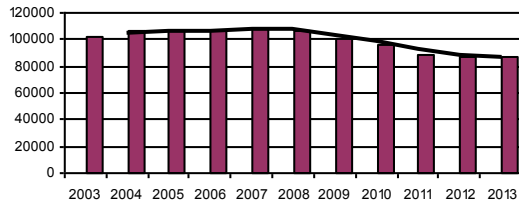
The Percentage of Non-Sentenced inmates for the second quarter 2013 remained unchanged at 63% from the first quarter 2012. For the second quarter 2012 non-sentenced inmates accounted for 62% of ADP.

Quarterly Results

	Q1	Q2	Q3	Q4	Average
2012	64%	62%	63%	63%	63%
2013	63%	63%			63%

Average Number of Persons Booked Per Month

10 Year Summary									
2003	2004	2005	2006	2007	2008	2009	2010	2011	2012
102,217	106,862	107,120	106,868	108,238	107,086	101,223	96,460	88,614	87,560



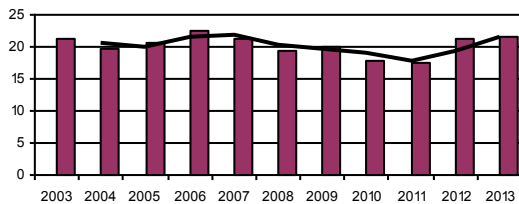
The Average Number of Persons Booked Per Month in the second quarter 2013 of 88,101 represents an increase of 4.2% over the first quarter 2013 and a decrease of 1.2% from the second quarter of 2012.

Quarterly Results

	Q1	Q2	Q3	Q4	Average
2012	86,851	89,373	91,084	82,946	87,560
2013	84,559	88,101			86,340

Average Length Of Stay

10 Year Summary									
2003	2004	2005	2006	2007	2008	2009	2010	2011	2012
21.2	19.8	20.5	22.5	21.4	19.4	20.0	17.9	17.5	21.3



The Average Length of Stay (ALS) of 22 days in the second quarter 2013 increased 3.3% from 21.3 days in the first quarter 2013. The ALS for the second quarter 2013 represents a 8.4% increase over the ALS of 20.3 days for the second quarter 2012.

Quarterly Results

	Q1	Q2	Q3	Q4	Average
2012	23.1	20.3	20.3	21.5	21.3
2013	21.3	22.0			21.6

Average Daily Population

Non-sentenced / Sentenced Male / Female

California County Jails - For Months Of April - June 2013

Jurisdiction	Non-sentenced						Sentenced						Total
	Male		Female		Total		Male		Female		Total		
	#	%	#	%	#	%	#	%	#	%	#	%	
1. Alameda Sheriff's Dept.	2,229	91%	211	9%	2,440	71%	892	91%	88	9%	980	29%	3,420
2. Amador Sheriff's Dept.	46	86%	7	14%	53	55%	34	79%	9	21%	43	45%	96
3. Butte Sheriff's Dept.	351	87%	54	13%	404	68%	166	86%	27	14%	193	32%	597
4. Calaveras Sheriff's Dept.	33	85%	6	15%	39	56%	28	92%	2	8%	31	44%	70
5. Colusa Sheriff's Dept.	44	86%	7	14%	51	67%	16	64%	9	36%	25	33%	76
6. Contra Costa Sheriff's Dept.	997	88%	141	12%	1,138	78%	307	94%	20	6%	327	22%	1,465
7. Del Norte Sheriff's Dept.	35	81%	8	19%	43	46%	38	77%	11	23%	49	54%	92
8. El Dorado Sheriff's Dept.	168	85%	29	15%	197	52%	148	81%	35	19%	182	48%	380
9. Fresno Sheriff's Dept.	1,884	92%	163	8%	2,047	67%	961	93%	68	7%	1,029	33%	3,076
10. Glenn Sheriff's Dept.	74	88%	10	12%	84	74%	24	84%	5	16%	29	26%	113
11. Humboldt Sheriff's Dept.	203	87%	32	13%	235	63%	119	85%	22	15%	140	37%	375
12. Imperial Sheriff's Dept.	311	90%	35	10%	345	60%	203	89%	25	11%	229	40%	574
13. Inyo Sheriff's Dept.	26	96%	1	4%	27	37%	39	85%	7	15%	46	63%	73
14. Kern Sheriff's Dept.	1,792	89%	232	11%	2,024	77%	521	88%	74	12%	595	23%	2,619
15. Kings Sheriff's Dept.	208	89%	27	11%	235	47%	211	80%	54	20%	265	53%	500
16. Lake Sheriff's Dept.	159	86%	26	14%	185	59%	108	85%	19	15%	127	41%	312
17. Lassen Sheriff's Dept.	34	77%	10	23%	44	38%	54	75%	18	25%	71	62%	115
18. Los Angeles Sheriff's Dept.	9,093	88%	1,220	12%	10,313	56%	6,701	84%	1,243	16%	7,944	44%	18,257
19. Madera Corrections Dept.	291	88%	41	12%	332	79%	78	86%	13	14%	90	21%	422
20. Marin Sheriff's Dept.	197	87%	30	13%	226	78%	54	82%	12	18%	65	22%	292
21. Mariposa Sheriff's Dept.	23	84%	4	16%	27	56%	19	88%	3	12%	22	44%	49
22. Mendocino Sheriff's Dept.	152	88%	20	12%	172	63%	80	78%	22	22%	102	37%	275
23. Merced Sheriff's Dept.	476	91%	48	9%	524	54%	401	90%	47	10%	448	46%	972
24. Modoc Sheriff's Dept.	13	80%	3	20%	17	56%	11	80%	3	20%	13	44%	30
25. Mono Sheriff's Dept.	10	89%	1	11%	12	38%	17	86%	3	14%	19	62%	31
26. Monterey Sheriff's Dept.	701	86%	113	14%	814	72%	269	84%	52	16%	321	28%	1,135
27. Napa Corrections Dept.	126	88%	17	12%	143	62%	79	88%	10	12%	90	38%	233
28. Nevada Sheriff's Dept.	107	87%	16	13%	123	81%	23	79%	6	21%	29	19%	152
29. Orange Sheriff's Dept.	3,054	88%	411	12%	3,466	51%	2,835	85%	518	15%	3,353	49%	6,818
30. Placer Sheriff's Dept.	352	88%	49	12%	401	64%	185	83%	37	17%	222	36%	623
31. Plumas Sheriff's Dept.	13	81%	3	19%	16	38%	23	90%	3	10%	26	62%	41
32. Riverside Sheriff's Dept.	2,486	89%	312	11%	2,799	72%	924	85%	160	15%	1,083	28%	3,882
33. Sacramento Sheriff's Dept.	2,154	94%	149	6%	2,303	55%	1,534	83%	318	17%	1,852	45%	4,154
34. San Benito Sheriff's Dept.	65	87%	9	13%	74	64%	35	83%	7	17%	42	36%	116
35. San Bernardino Sheriff's Dept.	3,830	87%	558	13%	4,388	74%	1,401	90%	156	10%	1,557	26%	5,945

Average Daily Population

Non-sentenced / Sentenced Male / Female

California County Jails - For Months Of April - June 2013

Jurisdiction	Non-sentenced						Sentenced						Total
	Male		Female		Total		Male		Female		Total		
	#	%	#	%	#	%	#	%	#	%	#	%	
36. San Diego Sheriff's Dept.	2,665	85%	453	15%	3,117	57%	1,970	84%	370	16%	2,340	43%	5,457
37. San Diego Work Furlough	6	79%	2	21%	8	3%	183	74%	65	26%	248	97%	256
38. San Francisco Sheriff's Dept.	1,118	91%	115	9%	1,233	83%	232	89%	29	11%	261	17%	1,494
39. San Joaquin Sheriff's Dept.	796	88%	109	12%	905	62%	476	87%	72	13%	548	38%	1,453
40. San Luis Obispo Sheriff's Dept	288	84%	54	16%	342	50%	289	84%	56	16%	345	50%	688
41. San Mateo Sheriff's Dept.	538	88%	71	12%	609	58%	364	83%	74	17%	437	42%	1,046
42. Santa Ana Police Dept.	351	79%	93	21%	444	100%	0	0%	0	0%	0	0%	444
43. Santa Barbara Sheriff's Dept.	617	85%	105	15%	722	72%	237	85%	42	15%	279	28%	1,002
44. Santa Clara Corrections Dept.	2,425	88%	324	12%	2,749	69%	1,027	83%	209	17%	1,236	31%	3,985
45. Santa Cruz Sheriff's Dept.	228	90%	26	10%	254	63%	129	87%	20	13%	149	37%	403
46. Shasta Sheriff's Dept.	188	86%	29	14%	217	67%	89	84%	17	16%	106	33%	323
47. Sierra Sheriff's Dept.	3	100%	0	0%	3	75%	1	100%	0	0%	1	25%	4
48. Siskiyou Sheriff's Dept.	65	90%	7	10%	72	74%	23	88%	3	12%	26	26%	98
49. Solano Sheriff's Dept.	586	88%	78	12%	664	70%	249	87%	39	13%	288	30%	952
50. Sonoma Sheriff's Dept.	407	83%	81	17%	489	44%	514	84%	98	16%	611	56%	1,100
51. Stanislaus Sheriff's Dept.	795	88%	112	12%	907	82%	175	90%	20	10%	196	18%	1,103
52. Sutter Sheriff's Dept.	182	88%	25	12%	208	78%	40	69%	18	31%	59	22%	266
53. Tehama Sheriff's Dept.	88	91%	9	9%	97	52%	77	87%	11	13%	88	48%	185
54. Trinity Sheriff's Dept.	27	80%	7	20%	34	58%	22	90%	2	10%	24	42%	58
55. Tulare Sheriff's Dept.	831	91%	82	9%	913	55%	599	82%	134	18%	733	45%	1,646
56. Tuolumne Sheriff's Dept.	71	76%	22	24%	93	67%	34	76%	11	24%	45	33%	138
57. Ventura Sheriff's Dept.	859	87%	127	13%	985	62%	491	82%	110	18%	601	38%	1,586
58. Ventura Work Furlough	0	0%	0	0%	0	0%	72	78%	20	22%	92	100%	92
59. Yolo Sheriff's Dept.	238	89%	30	11%	268	61%	151	88%	21	12%	172	39%	440
60. Yuba Sheriff's Dept.	291	90%	34	10%	325	78%	76	83%	15	17%	92	22%	416
Statewide	45,398	88%	6,002	12%	51,400	63%	26,058	85%	4,561	15%	30,619	37%	82,019

Jail Populations: Quarter 2, 2012 Versus Quarter 2, 2013

Jurisdiction	Qtr 2, 2012	Qtr 2, 2013	Qtr 2, 2013 Minus Qtr 2, 2012	Qtr 2, 2012 To Qtr 2, 2013 % +/-	% of Total Increase or Decrease	Cum %	Cum Total
Los Angeles Sheriff's Dept.	17,327	18,257	930	5.4%	18.5%	18.46%	930
Fresno Sheriff's Dept.	2,357	3,077	720	30.5%	14.3%	32.74%	1,650
San Bernardino Sheriff's Dept.	5,387	5,945	558	10.4%	11.1%	43.82%	2,208
San Diego Sheriff's Dept.	5,064	5,457	393	7.8%	7.8%	51.62%	2,601
Santa Clara Corrections Dept.	3,602	3,985	383	10.6%	7.6%	59.22%	2,984
Merced Sheriff's Dept.	657	971	314	47.8%	6.2%	65.45%	3,298
Orange Sheriff's Dept.	6,504	6,818	314	4.8%	6.2%	71.68%	3,612
San Joaquin Sheriff's Dept.	1,290	1,454	164	12.7%	3.3%	74.94%	3,776
Alameda Sheriff's Dept.	3,292	3,420	128	3.9%	2.5%	77.48%	3,904
Sacramento Sheriff's Dept.	4,040	4,155	115	2.8%	2.3%	79.76%	4,019
Shasta Sheriff's Dept.	224	323	99	44.2%	2.0%	81.72%	4,118
Ventura Sheriff's Dept.	1,497	1,587	90	6.0%	1.8%	83.51%	4,208
Imperial Sheriff's Dept.	495	574	79	16.0%	1.6%	85.08%	4,287
San Luis Obispo Sheriff's Dept.	611	688	77	12.6%	1.5%	86.60%	4,364
Kern Sheriff's Dept.	2,554	2,619	65	2.5%	1.3%	87.89%	4,429
Solano Sheriff's Dept.	889	952	63	7.1%	1.3%	89.14%	4,492
Tulare Sheriff's Dept.	1,589	1,645	56	3.5%	1.1%	90.26%	4,548
Sonoma Sheriff's Dept.	1,049	1,100	51	4.9%	1.0%	91.27%	4,599
Sutter Sheriff's Dept.	215	266	51	23.7%	1.0%	92.28%	4,650
San Diego Work Furlough	206	256	50	24.3%	1.0%	93.27%	4,700
Santa Barbara Sheriff's Dept.	965	1,002	37	3.8%	0.7%	94.01%	4,737
San Mateo Sheriff's Dept.	1,010	1,046	36	3.6%	0.7%	94.72%	4,773
El Dorado Sheriff's Dept.	347	379	32	9.2%	0.6%	95.36%	4,805
Lake Sheriff's Dept.	283	313	30	10.6%	0.6%	95.95%	4,835
Santa Ana Police Dept.	417	443	26	6.2%	0.5%	96.47%	4,861
Mendocino Sheriff's Dept.	255	275	20	7.8%	0.4%	96.86%	4,881
Placer Sheriff's Dept.	604	623	19	3.1%	0.4%	97.24%	4,900
Butte Sheriff's Dept.	580	597	17	2.9%	0.3%	97.58%	4,917
Colusa Sheriff's Dept.	61	76	15	24.6%	0.3%	97.88%	4,932
Kings Sheriff's Dept.	485	500	15	3.1%	0.3%	98.17%	4,947
Mariposa Sheriff's Dept.	34	49	15	44.1%	0.3%	98.47%	4,962
Lassen Sheriff's Dept.	105	116	11	10.5%	0.2%	98.69%	4,973
Glenn Sheriff's Dept.	102	113	11	10.8%	0.2%	98.91%	4,984
Humboldt Sheriff's Dept.	364	375	11	3.0%	0.2%	99.13%	4,995
Inyo Sheriff's Dept.	65	73	8	12.3%	0.2%	99.29%	5,003
Modoc Sheriff's Dept.	22	30	8	36.4%	0.2%	99.44%	5,011
Ventura Work Furlough	86	93	7	8.1%	0.1%	99.58%	5,018
Tuolumne Sheriff's Dept.	132	137	5	3.8%	0.1%	99.68%	5,023
Trinity Sheriff's Dept.	54	58	4	7.4%	0.1%	99.76%	5,027
Siskiyou Sheriff's Dept.	95	99	4	4.2%	0.1%	99.84%	5,031
Del Norte Sheriff's Dept.	89	92	3	3.4%	0.1%	99.90%	5,034
Mono Sheriff's Dept.	28	31	3	10.7%	0.1%	99.96%	5,037
Sierra Sheriff's Dept.	3	4	1	33.3%	0.0%	99.98%	5,038
Amador Sheriff's Dept.	96	97	1	1.0%	0.0%	100.00%	5,039
Yuba Sheriff's Dept.	417	417	0	0.0%	0.0%	100.00%	5,039
Yolo Sheriff's Dept.	440	440	0	0.0%	0.0%	100.00%	5,039
Calaveras Sheriff's Dept.	71	70	-1	-1.4%	0.3%	0.28%	-1
Plumas Sheriff's Dept.	43	42	-1	-2.3%	0.3%	0.56%	-2
Santa Cruz Sheriff's Dept.	407	404	-3	-0.7%	0.8%	1.40%	-5
Madera Corrections Dept.	431	423	-8	-1.9%	2.2%	3.63%	-13
Marin Sheriff's Dept.	301	292	-9	-3.0%	2.5%	6.15%	-22
Monterey Sheriff's Dept.	1,145	1,135	-10	-0.9%	2.8%	8.94%	-32
San Benito Sheriff's Dept.	132	117	-15	-11.4%	4.2%	13.13%	-47
Napa Corrections Dept.	251	232	-19	-7.6%	5.3%	18.44%	-66
Tehama Sheriff's Dept.	205	185	-20	-9.8%	5.6%	24.02%	-86
Riverside Sheriff's Dept.	3,904	3,882	-22	-0.6%	6.1%	30.17%	-108
San Francisco Sheriff's Dept.	1,525	1,495	-30	-2.0%	8.4%	38.55%	-138
Stanislaus Sheriff's Dept.	1,140	1,102	-38	-3.3%	10.6%	49.16%	-176
Nevada Sheriff's Dept.	198	152	-46	-23.2%	12.8%	62.01%	-222
Contra Costa Sheriff's Dept.	1,601	1,465	-136	-8.5%	38.0%	100.00%	-358
	77,342	82,023	4,681				

Note: Totals subject to slight variation due to rounding

Total Increase:	5,039
Total Decrease:	-358

INTERPRETATION OF TABLE

JAIL POPULATIONS: 2nd Qtr Calendar Year '12 vs. 2nd Qtr Calendar Year '13

This table:

- summarizes the ADP results for the 60 jurisdictions in California reporting data from Type II, III, and IV jails;
- summarizes jurisdiction ADP results for the most recent quarter (Third Column from left);
- compares jurisdiction ADP for the most recent quarter with the same quarter last year (Second Column);
- ranks the jurisdictions in terms of gains or losses in ADP from high to low (Fourth Column);
- lists the percentage of growth or decline in ADP for each jurisdiction (Fifth Column);
- lists the percentage of the overall State increase or decrease in ADP that is represented by each jurisdiction (Sixth Column);
- lists by jurisdiction the cumulative percentage increase and decrease in the State ADP starting with the jurisdiction with the largest percentage of increase and proceeding to the jurisdiction with the largest percentage of decrease (Seventh Column);
- lists by jurisdiction the cumulative total increase and decrease in the State ADP starting with the jurisdiction with the highest increase first and proceeding to the jurisdiction with the highest decrease last (Eighth Column); and,
- lists the jurisdictions that experienced decreases in their ADP as shaded.

Some important conclusions from this table are:

1. The two numbers at the bottom indicate the "total increase" in ADP (in this case 5,039) and "total decrease" in ADP (358). Specifically, the jurisdictions experiencing increases had a total increase of 5,039 ADP; and the jurisdictions experiencing decreases had a total decrease of 358 ADP. Subtracting 358 from 5,039 produces the overall increase of 4,681 between the first quarter of calendar year 2012 and the first quarter of calendar year 2013.
2. The Los Angeles Sheriff's Dept. ADP increase of 930 is 18.5% of the total increase of 5,039. Forty-four jurisdictions had increases (down to Amador Sheriff's Dept.) with two jurisdictions (Yuba Sheriff's Dept., and Yolo Sheriff's Dept.) reporting no change. When you get to Amador Sheriff's Dept., you have accounted for 100% of the increase (100% of the cumulative total of 5,039).
3. Jurisdictions that experienced a decrease in ADP are listed from smallest decrease to largest decrease (Calaveras Sheriff's Dept. to Contra Costa Sheriff's Dept.). When you get to the bottom of the table, you have accounted for 100% of the total decrease of 358 inmates.
4. The cumulative percentage of ADP increase for the top four jurisdictions (Los Angeles Sheriff's Dept., Fresno Sheriff's Dept., San Bernardino Sheriff's Dept., and San Diego Sheriff's Dept.) 51.62%. Four jurisdictions (San Francisco Sheriff's Dept., Stanislaus Sheriff's Dept., Nevada Sheriff's Dept., and Contra Costa Sheriff's Dept.) account for 69.8% of the decreases.