

# JAIL PROFILE SURVEY

.....

**First Quarter Calendar Year 2013**

**Survey Results**



## **BOARD OF STATE AND COMMUNITY CORRECTIONS**

**FACILITIES STANDARDS OPERATIONS & CONSTRUCTION DIVISION**

**600 Bercut Drive, Sacramento, CA 95811**

**916.445.5073 PHONE**

**916.327.3317 FAX**

**[bscc.ca.gov](http://bscc.ca.gov)**

Leadership



Excellence



Support

## **EXPLANATION OF RESULTS**

The following pages contain the Jail Profile Survey results for the First Quarter of Calendar Year 2013. Page 2 contains the quarterly totals based upon the monthly and quarterly data submitted to us by the participating jurisdictions. Pages 3 and 4 show the trend data for the last ten years on variables we have been tracking. The below information provides explanations and clarifications of the data presented.

### **Page 2**

- Unless otherwise noted, “projected totals” are based upon the average per day for the variable in question. For example, there was an average of 80,841 inmates per day in local jails (excluding Type I’s) during the three-month span of January through March, 2013.
- For some variables (other than ADP), we did not receive complete data from all jurisdictions. In such instances, we used statistical procedures to estimate the statewide total.
- The number of “Bookings” is the average of the monthly totals for January, February, and March 2013.
- For the following variables, the numbers presented are the totals as of the mid-quarter (i.e., February 15, 2013): Pretrial Release, Early Release, 2 and 3 Strikes, Felony Warrants, Misdemeanor Warrants, Juveniles in Custody and Undocumented Aliens.
- Assaults are defined as the total number of serious inmate assaults on staff (resulting in a crime report), statewide, during the First Quarter of Calendar Year 2013.
- Note: Totals are subject to slight variation due to rounding.

### **Pages 3 and 4**

- The data in the 10-Year Summary tables are based upon survey data which the Board of State and Community Corrections has gathered since the early 1980’s.
- Prior to 1995, yearly averages were reported on an annual basis. Yearly averages from 1996 to the present time have been the average of the 12 calendar months. In 1995, the yearly figure reported is the fourth quarter average, since we do not have data from the first three quarters.

**Please note:** Each quarter, every county with Type II, III, and IV detention facilities submits their data to the BSCC. While we make every effort to review data for accuracy, including contacting individual counties for clarification, the BSCC cannot be responsible for data reporting errors made at the county level. While the county specific data presented in this report is current as of October 15, 2013, all data are available for updates as needed.

# BOARD OF STATE AND COMMUNITY CORRECTIONS JAIL PROFILE SURVEY

**Reporting Period: January to March, 2013**

## County Jail Populations

ADP <sup>a</sup>	80,841 <sup>b</sup>
Holding Areas	1,255
Average "Under the Roof" <sup>c</sup>	82,096 <sup>d</sup>
Highest One Day Count	84,867 <sup>e</sup>

## County Jail Populations

Felony	69,030
Misdemeanor	11,811
<b>Total</b>	<b>80,841</b>
Non-Sentenced Males	44,842
Non-Sentenced Females	5,731
Sentenced Males	25,704
Sentenced Females	4,564
<b>Total</b>	<b>80,841</b>
Maximum Security Inmates	25,055
Medium Security Inmates	35,575
Minimum Security Inmates	20,211
<b>Total</b>	<b>80,841</b>

## Inmates From Other Jurisdictions

Housed on Federal Contract	3,437
Housed on Contract with CDC	0
From Other Counties on Contract	71
Awaiting Transport	1,392
<b>Total</b>	<b>4,900</b>

## Special Use Beds

Medical Beds	1,232
Mental Health Beds	2,716

## Released Per Month Due to Lack of Space

Pretrial Release	6,640 <sup>f</sup>
Early Release	6,143 <sup>f</sup>
<b>Total</b>	<b>12,783</b>

## Inmates with 2 and 3 Strikes

2 Strike Inmates	4,104 <sup>g</sup>
3 Strike Inmates	1,211 <sup>g</sup>
<b>Total</b>	<b>5,315</b>

## Unservd Warrants

Felony Warrants	233,924 <sup>g</sup>
Misdemeanor Warrants	1,430,892 <sup>g</sup>
<b>Total</b>	<b>1,664,816</b>

## Other Jail Profile Survey Variables

Bookings Per Month	84,559 <sup>f</sup>
Juveniles in Custody	0 <sup>f</sup>
Criminal / Illegal Aliens	9,507
Assaults On Staff	332

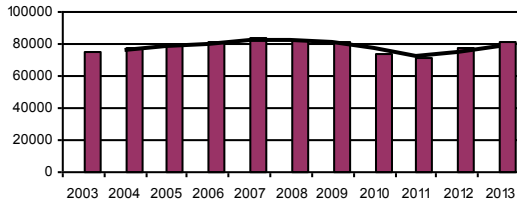
- a. The Average Daily Population for all jurisdictions (excluding Type I's) does not include inmates in holding areas.
- b. Unless otherwise indicated, the numbers reported are the average across the days in the quarter.
- c. "Under the Roof" is the sum of the Average Daily Population plus the average daily number of inmates in Holding Areas.
- d. Totals may not be the exact sum of the subtotals due to rounding.
- e. The sum of all Highest One Day inmate population counts from all jurisdictions.
- f. These data are collected on a monthly basis, this figure is an average of the total numbers collected each month during this quarter.
- g. These data are one-day snapshots collected at the end of the quarter.

# Jail Profile Survey

2013

## Average Daily Population

10 Year Summary									
2003	2004	2005	2006	2007	2008	2009	2010	2011	2012
75,243	76,887	79,705	81,104	83,184	82,397	80,865	73,444	71,015	77,818



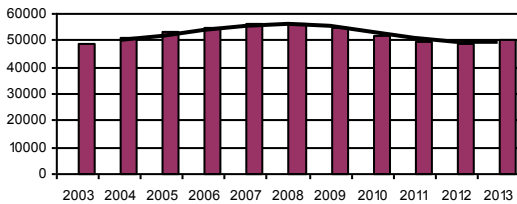
The Average Daily Population (ADP) of 80,841 for the first quarter 2013 represents a slight increase over the fourth quarter 2012 and reflects a seventh consecutive quarterly increase in ADP. The ADP for the first quarter 2013 represents 8.5% increase over the first quarter 2012.

## Quarterly Results

	Q1	Q2	Q3	Q4	Average
2012	74,527	77,340	79,229	80,136	77,818
2013	80,841				80,841

## Non-sentenced ADP

10 Year Summary									
2003	2004	2005	2006	2007	2008	2009	2010	2011	2012
49,121	50,715	53,357	54,585	56,571	56,232	54,589	52,059	49,705	48,975



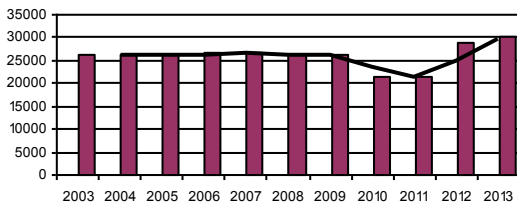
The Non-Sentenced ADP was 50,574 for the first quarter 2013 representing a slight increase over the fourth quarter 2013 and an increase of 6.08% over the first quarter 2012.

## Quarterly Results

	Q1	Q2	Q3	Q4	Average
2012	47,675	48,189	49,703	50,309	50,574
2013	50,574				48,975

## Sentenced ADP

10 Year Summary									
2003	2004	2005	2006	2007	2008	2009	2010	2011	2012
26,121	26,171	26,347	26,519	26,613	26,165	26,277	21,385	21,310	28,844



The Sentenced ADP was 30,268 for the first quarter 2013 representing an increase of 1.5% over the fourth quarter 2012 and an increase of 12.7% over the first quarter of 2012.

## Quarterly Results

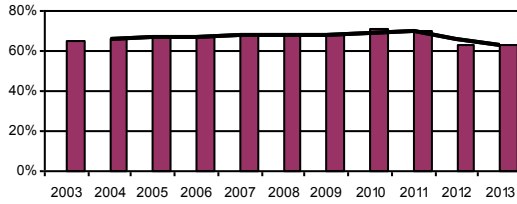
	Q1	Q2	Q3	Q4	Average
2012	26,853	29,152	29,526	29,827	28,844
2013	30,268				30,268

# Jail Profile Survey

2013

## Percentage Non-sentenced

10 Year Summary									
2003	2004	2005	2006	2007	2008	2009	2010	2011	2012
65%	66%	67%	67%	68%	68%	68%	71%	70%	63%



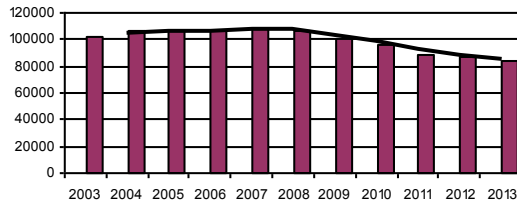
The Percentage of Non-Sentenced inmates for the first quarter 2013 remained unchanged at 63% from the fourth quarter 2012. For the first quarter 2012 non-sentenced inmates accounted for 64% of ADP.

## Quarterly Results

	Q1	Q2	Q3	Q4	Average
2012	64%	62%	63%	63%	63%
2013	63%				63%

## Average Number of Persons Booked Per Month

10 Year Summary									
2003	2004	2005	2006	2007	2008	2009	2010	2011	2012
102,217	106,862	107,120	106,868	108,238	107,086	101,223	96,460	88,614	87,560



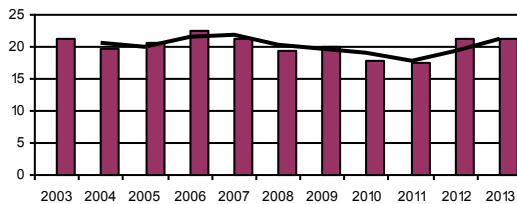
The Average Number of Persons Booked Per Month in the first quarter 2013 of 84,559 represents an increase of 1.9% over the fourth quarter 2012 and a decrease of 2.6% from the first quarter of 2012.

## Quarterly Results

	Q1	Q2	Q3	Q4	Average
2012	86,851	89,373	91,084	82,946	87,560
2013	84,559				84,559

## Average Length Of Stay

10 Year Summary									
2003	2004	2005	2006	2007	2008	2009	2010	2011	2012
21.2	19.8	20.5	22.5	21.4	19.4	20.0	17.9	17.5	21.3



The Average Length of Stay (ALS) of 21.3 days in the first quarter 2013 decreased by 1% from 21.5 days in the fourth quarter 2012. The ALS for the first quarter 2013 represents an 8% decrease from the ALS of 23.1 days for the first quarter 2012.

## Quarterly Results

	Q1	Q2	Q3	Q4	Average
2012	23.1	20.3	20.3	21.5	21.3
2013	21.3				21.3

# Average Daily Population

Non-sentenced / Sentenced Male / Female

California County Jails - For Months Of January - March 2013

Jurisdiction	Non-sentenced						Sentenced						Total
	Male		Female		Total		Male		Female		Total		
	#	%	#	%	#	%	#	%	#	%	#	%	
1. Alameda Sheriff's Dept.	2,161	91%	211	9%	2,372	70%	916	92%	83	8%	999	30%	3,371
2. Amador Sheriff's Dept.	46	83%	10	17%	56	54%	38	81%	9	19%	47	46%	103
3. Butte Sheriff's Dept.	389	88%	52	12%	440	74%	135	87%	19	13%	154	26%	595
4. Calaveras Sheriff's Dept.	32	83%	7	17%	38	55%	29	92%	3	8%	32	45%	70
5. Colusa Sheriff's Dept.	39	86%	7	14%	46	69%	16	77%	5	23%	20	31%	66
6. Contra Costa Sheriff's Dept.	1,006	88%	132	12%	1,138	78%	309	96%	13	4%	323	22%	1,461
7. Del Norte Sheriff's Dept.	43	85%	8	15%	51	54%	31	72%	12	28%	43	46%	94
8. El Dorado Sheriff's Dept.	159	87%	24	13%	183	48%	158	81%	37	19%	195	52%	379
9. Fresno Sheriff's Dept.	1,965	93%	159	7%	2,124	69%	843	89%	103	11%	946	31%	3,069
10. Glenn Sheriff's Dept.	62	87%	10	13%	72	72%	20	72%	8	28%	27	28%	99
11. Humboldt Sheriff's Dept.	204	87%	31	13%	235	64%	110	84%	21	16%	131	36%	366
12. Imperial Sheriff's Dept.	276	91%	26	9%	302	61%	173	90%	20	10%	194	39%	496
13. Inyo Sheriff's Dept.	32	84%	6	16%	38	52%	31	89%	4	11%	35	48%	74
14. Kern Sheriff's Dept.	1,848	90%	216	10%	2,064	79%	475	85%	85	15%	560	21%	2,624
15. Kings Sheriff's Dept.	219	90%	25	10%	244	49%	199	79%	52	21%	251	51%	495
16. Lake Sheriff's Dept.	147	89%	19	11%	166	55%	114	83%	24	17%	138	45%	304
17. Lassen Sheriff's Dept.	42	79%	11	21%	53	41%	62	80%	15	20%	78	59%	131
18. Los Angeles Sheriff's Dept.	8,679	88%	1,186	12%	9,865	54%	7,067	85%	1,271	15%	8,337	46%	18,202
19. Madera Corrections Dept.	297	87%	43	13%	340	74%	102	85%	19	15%	120	26%	460
20. Marin Sheriff's Dept.	184	87%	28	13%	212	75%	55	76%	17	24%	72	25%	284
21. Mariposa Sheriff's Dept.	24	88%	3	12%	27	55%	17	79%	5	21%	22	45%	49
22. Mendocino Sheriff's Dept.	147	87%	21	13%	168	62%	83	79%	22	21%	105	38%	273
23. Merced Sheriff's Dept.	525	92%	48	8%	573	68%	243	90%	27	10%	270	32%	843
24. Modoc Sheriff's Dept.	13	80%	3	20%	16	53%	11	79%	3	21%	14	47%	31
25. Mono Sheriff's Dept.	9	93%	1	7%	9	33%	17	90%	2	10%	19	67%	29
26. Monterey Sheriff's Dept.	698	88%	93	12%	791	70%	271	80%	69	20%	340	30%	1,132
27. Napa Corrections Dept.	158	89%	20	11%	178	67%	76	88%	11	12%	87	33%	265
28. Nevada Sheriff's Dept.	110	84%	21	16%	131	66%	57	84%	11	16%	68	34%	199
29. Orange Sheriff's Dept.	2,998	88%	402	12%	3,400	50%	2,836	85%	500	15%	3,336	50%	6,736
30. Placer Sheriff's Dept.	357	88%	51	12%	407	65%	183	83%	36	17%	219	35%	627
31. Plumas Sheriff's Dept.	18	79%	5	21%	23	59%	13	82%	3	18%	16	41%	40
32. Riverside Sheriff's Dept.	2,453	89%	305	11%	2,757	71%	971	87%	148	13%	1,119	29%	3,876
33. Sacramento Sheriff's Dept.	2,139	93%	155	7%	2,294	57%	1,447	82%	317	18%	1,764	43%	4,058
34. San Benito Sheriff's Dept.	55	81%	13	19%	67	57%	43	84%	8	16%	51	43%	119
35. San Bernardino Sheriff's Dept.	3,798	88%	514	12%	4,313	75%	1,264	88%	172	12%	1,436	25%	5,749

# Average Daily Population

Non-sentenced / Sentenced Male / Female

California County Jails - For Months Of January - March 2013

	Non-sentenced						Sentenced						Total
	Male		Female		Total		Male		Female		Total		
	#	%	#	%	#	%	#	%	#	%	#	%	
36. San Diego Sheriff's Dept.	2,600	86%	406	14%	3,006	57%	1,924	84%	380	16%	2,304	43%	5,310
37. San Diego Work Furlough	4	92%	0	8%	4	2%	163	72%	63	28%	225	98%	230
38. San Francisco Sheriff's Dept.	1,132	92%	104	8%	1,236	83%	222	87%	34	13%	256	17%	1,492
39. San Joaquin Sheriff's Dept.	834	90%	89	10%	923	64%	458	89%	58	11%	516	36%	1,439
40. San Luis Obispo Sheriff's Dept	297	84%	55	16%	352	51%	289	84%	55	16%	345	49%	697
41. San Mateo Sheriff's Dept.	546	88%	75	12%	622	61%	326	82%	73	18%	399	39%	1,021
42. Santa Ana Police Dept.	360	80%	92	20%	452	100%	0	0%	0	0%	0	0%	452
43. Santa Barbara Sheriff's Dept.	600	86%	97	14%	697	70%	252	85%	43	15%	295	30%	993
44. Santa Clara Corrections Dept.	2,320	89%	301	11%	2,621	70%	958	84%	184	16%	1,142	30%	3,763
45. Santa Cruz Sheriff's Dept.	243	90%	28	10%	271	66%	119	86%	20	14%	139	34%	410
46. Shasta Sheriff's Dept.	182	86%	30	14%	212	66%	94	85%	17	15%	111	34%	324
47. Sierra Sheriff's Dept.	1	76%	0	24%	1	44%	1	59%	1	41%	2	56%	3
48. Siskiyou Sheriff's Dept.	65	86%	11	14%	76	78%	20	92%	2	8%	22	22%	98
49. Solano Sheriff's Dept.	525	87%	80	13%	605	68%	240	83%	49	17%	289	32%	894
50. Sonoma Sheriff's Dept.	406	86%	68	14%	475	45%	495	85%	88	15%	583	55%	1,058
51. Stanislaus Sheriff's Dept.	800	90%	92	10%	892	78%	224	90%	24	10%	248	22%	1,140
52. Sutter Sheriff's Dept.	171	88%	23	12%	194	76%	40	66%	21	34%	61	24%	255
53. Tehama Sheriff's Dept.	90	86%	14	14%	104	57%	65	84%	12	16%	78	43%	181
54. Trinity Sheriff's Dept.	21	76%	7	24%	27	55%	19	85%	3	15%	23	45%	50
55. Tulare Sheriff's Dept.	818	90%	88	10%	906	56%	597	82%	127	18%	724	44%	1,629
56. Tuolumne Sheriff's Dept.	74	79%	20	21%	94	68%	35	80%	9	20%	44	32%	138
57. Ventura Sheriff's Dept.	878	88%	120	12%	998	64%	459	83%	92	17%	551	36%	1,549
58. Ventura Work Furlough	0	0%	0	0%	0	0%	66	77%	19	23%	86	100%	86
59. Yolo Sheriff's Dept.	244	88%	33	12%	277	62%	146	85%	26	15%	173	38%	450
60. Yuba Sheriff's Dept.	299	90%	32	10%	331	80%	73	87%	11	13%	84	20%	415
<b>Statewide</b>	<b>44,843</b>	<b>89%</b>	<b>5,731</b>	<b>11%</b>	<b>50,574</b>	<b>63%</b>	<b>25,704</b>	<b>85%</b>	<b>4,564</b>	<b>15%</b>	<b>30,267</b>	<b>37%</b>	<b>80,842</b>

## Jail Populations: Quarter 1, 2012 Versus Quarter 1, 2013

Jurisdiction	Qtr 1, 2012	Qtr 1, 2013	Qtr 1, 2013 Minus Qtr 1, 2012	Qtr 1, 2012 To Qtr 1, 2013 % +/-	% of Total Increase or Decrease	Cum %	Cum Total
Los Angeles Sheriff's Dept.	15,862	18,202	2,340	14.8%	35.8%	35.81%	2,340
Fresno Sheriff's Dept.	2,350	3,069	719	30.6%	11.0%	46.81%	3,059
Orange Sheriff's Dept.	6,123	6,736	613	10.0%	9.4%	56.19%	3,672
San Bernardino Sheriff's Dept.	5,360	5,749	389	7.3%	6.0%	62.14%	4,061
San Diego Sheriff's Dept.	4,941	5,310	369	7.5%	5.6%	67.79%	4,430
Santa Clara Corrections Dept.	3,516	3,762	246	7.0%	3.8%	71.55%	4,676
San Joaquin Sheriff's Dept.	1,225	1,440	215	17.6%	3.3%	74.84%	4,891
Merced Sheriff's Dept.	641	842	201	31.4%	3.1%	77.92%	5,092
Ventura Sheriff's Dept.	1,385	1,548	163	11.8%	2.5%	80.41%	5,255
Kern Sheriff's Dept.	2,511	2,625	114	4.5%	1.7%	82.16%	5,369
Tulare Sheriff's Dept.	1,531	1,630	99	6.5%	1.5%	83.67%	5,468
Shasta Sheriff's Dept.	231	324	93	40.3%	1.4%	85.10%	5,561
San Luis Obispo Sheriff's Dept.	613	697	84	13.7%	1.3%	86.38%	5,645
Alameda Sheriff's Dept.	3,288	3,371	83	2.5%	1.3%	87.65%	5,728
Monterey Sheriff's Dept.	1,065	1,132	67	6.3%	1.0%	88.68%	5,795
Sutter Sheriff's Dept.	191	255	64	33.5%	1.0%	89.66%	5,859
Solano Sheriff's Dept.	832	894	62	7.5%	0.9%	90.60%	5,921
Placer Sheriff's Dept.	567	627	60	10.6%	0.9%	91.52%	5,981
San Mateo Sheriff's Dept.	970	1,021	51	5.3%	0.8%	92.30%	6,032
Imperial Sheriff's Dept.	447	497	50	11.2%	0.8%	93.07%	6,082
Santa Barbara Sheriff's Dept.	944	993	49	5.2%	0.7%	93.82%	6,131
Yolo Sheriff's Dept.	415	450	35	8.4%	0.5%	94.35%	6,166
San Diego Work Furlough	196	230	34	17.3%	0.5%	94.87%	6,200
Madera Corrections Dept.	427	460	33	7.7%	0.5%	95.38%	6,233
Lassen Sheriff's Dept.	99	130	31	31.3%	0.5%	95.85%	6,264
Mendocino Sheriff's Dept.	245	274	29	11.8%	0.4%	96.30%	6,293
El Dorado Sheriff's Dept.	350	378	28	8.0%	0.4%	96.73%	6,321
Riverside Sheriff's Dept.	3,850	3,876	26	0.7%	0.4%	97.12%	6,347
Sonoma Sheriff's Dept.	1,032	1,058	26	2.5%	0.4%	97.52%	6,373
Kings Sheriff's Dept.	472	494	22	4.7%	0.3%	97.86%	6,395
Santa Cruz Sheriff's Dept.	394	410	16	4.1%	0.2%	98.10%	6,411
Tuolumne Sheriff's Dept.	124	138	14	11.3%	0.2%	98.32%	6,425
Nevada Sheriff's Dept.	187	199	12	6.4%	0.2%	98.50%	6,437
Inyo Sheriff's Dept.	62	73	11	17.7%	0.2%	98.67%	6,448
Mariposa Sheriff's Dept.	40	49	9	22.5%	0.1%	98.81%	6,457
Napa Corrections Dept.	257	266	9	3.5%	0.1%	98.94%	6,466
Modoc Sheriff's Dept.	22	30	8	36.4%	0.1%	99.07%	6,474
Glenn Sheriff's Dept.	91	99	8	8.8%	0.1%	99.19%	6,482
Marin Sheriff's Dept.	276	284	8	2.9%	0.1%	99.31%	6,490
Siskiyou Sheriff's Dept.	89	97	8	9.0%	0.1%	99.43%	6,498
Mono Sheriff's Dept.	22	29	7	31.8%	0.1%	99.54%	6,505
Butte Sheriff's Dept.	588	595	7	1.2%	0.1%	99.65%	6,512
Santa Ana Police Dept.	445	452	7	1.6%	0.1%	99.76%	6,519
Calaveras Sheriff's Dept.	66	70	4	6.1%	0.1%	99.82%	6,523
Lake Sheriff's Dept.	300	304	4	1.3%	0.1%	99.88%	6,527
Ventura Work Furlough	82	86	4	4.9%	0.1%	99.94%	6,531
Plumas Sheriff's Dept.	37	40	3	8.1%	0.0%	99.98%	6,534
Colusa Sheriff's Dept.	66	67	1	1.5%	0.0%	100.00%	6,535
Yuba Sheriff's Dept.	416	416	0	0.0%	0.0%	100.00%	6,535
Sierra Sheriff's Dept.	3	3	0	0.0%	0.0%	100.00%	6,535
Amador Sheriff's Dept.	106	103	-3	-2.8%	1.4%	1.36%	-3
Tehama Sheriff's Dept.	186	182	-4	-2.2%	1.8%	3.18%	-7
Trinity Sheriff's Dept.	56	50	-6	-10.7%	2.7%	5.91%	-13
Del Norte Sheriff's Dept.	101	94	-7	-6.9%	3.2%	9.09%	-20
Stanislaus Sheriff's Dept.	1,150	1,140	-10	-0.9%	4.5%	13.64%	-30
San Benito Sheriff's Dept.	136	119	-17	-12.5%	7.7%	21.36%	-47
Humboldt Sheriff's Dept.	390	366	-24	-6.2%	10.9%	32.27%	-71
Sacramento Sheriff's Dept.	4,086	4,058	-28	-0.7%	12.7%	45.00%	-99
Contra Costa Sheriff's Dept.	1,493	1,461	-32	-2.1%	14.5%	59.55%	-131
San Francisco Sheriff's Dept.	1,580	1,491	-89	-5.6%	40.5%	100.00%	-220
	74,530	80,845	6,315	Note: Totals subject to slight variation due to rounding			
		Total Increase:	6,535				
		Total Decrease:	-220				



## **INTERPRETATION OF TABLE**

### **JAIL POPULATIONS: 1<sup>st</sup> Qtr Calendar Year '12 vs. 1<sup>st</sup> Qtr Calendar Year '13**

#### **This table:**

- summarizes the ADP results for the 60 jurisdictions in California reporting data from Type II, III, and IV jails;
- summarizes jurisdiction ADP results for the most recent quarter (Third Column from left);
- compares jurisdiction ADP for the most recent quarter with the same quarter last year (Second Column);
- ranks the jurisdictions in terms of gains or losses in ADP from high to low (Fourth Column);
- lists the percentage of growth or decline in ADP for each jurisdiction (Fifth Column);
- lists the percentage of the overall State increase or decrease in ADP that is represented by each jurisdiction (Sixth Column);
- lists by jurisdiction the cumulative percentage increase and decrease in the State ADP starting with the jurisdiction with the largest percentage of increase and proceeding to the jurisdiction with the largest percentage of decrease (Seventh Column);
- lists by jurisdiction the cumulative total increase and decrease in the State ADP starting with the jurisdiction with the highest increase first and proceeding to the jurisdiction with the highest decrease last (Eighth Column); and,
- lists the jurisdictions that experienced decreases in their ADP as shaded.

#### **Some important conclusions from this table are:**

1. The two numbers at the bottom indicate the "total increase" in ADP (in this case 6,535) and "total decrease" in ADP (220). Specifically, the jurisdictions experiencing increases had a total increase of 6,535 ADP; and the jurisdictions experiencing decreases had a total decrease of 220 ADP. Subtracting 220 from 6,535 produces the overall increase of 6,315 between the first quarter of calendar year 2012 and the first quarter of calendar year 2013.
2. The Los Angeles Sheriff's Dept. ADP increase of 2,340 is 35.8% of the total increase of 6,535. Forty-eight jurisdictions had increases (down to Colusa Sheriff's Dept.) with two jurisdictions (Yuba Sheriff's Dept. and Sierra Sheriff's Dept.) reporting no change. When you get to Colusa Sheriff's Dept., you have accounted for 100% of the increase (100% of the cumulative total of 6,535).
3. Jurisdictions that experienced a decrease in ADP are listed from smallest decrease to largest decrease (Amador Sheriff's Dept. to San Francisco Sheriff's Dept.). When you get to the bottom of the table, you have accounted for 100% of the total decrease of 220 inmates.
4. The cumulative percentage of ADP increase for the top four jurisdictions (Los Angeles Sheriff's Dept., Fresno Sheriff's Dept., Orange Sheriff's Dept. and San Bernardino Sheriff's Dept.) is 62.14%. Four jurisdictions (Humboldt Sheriff's Dept., Sacramento Sheriff's Dept., Contra Costa Sheriff's Dept., and San Francisco Sheriff's Dept.) account for 78.6% of the decreases.