

JAIL PROFILE SURVEY

2012, 1st QUARTER SURVEY RESULTS

FACILITIES STANDARDS AND OPERATIONS DIVISION

CORRECTIONS STANDARDS AUTHORITY

(became BOARD OF STATE AND COMMUNITY CORRECTIONS effective 7/1/12)

STATE OF CALIFORNIA
600 Bercut Drive
Sacramento, CA 95811
(916) 445-5073
www.bscc.ca.gov

EXPLANATION OF RESULTS

The following pages contain the Jail Profile Survey results for the first quarter of calendar year 2012. Page 1 contains the quarterly totals based upon the monthly and quarterly data submitted to us by the participating jurisdictions. Pages 2 and 3 show the trend data for variables we have been tracking for the last ten years. The remainder of this page provides explanations and clarifications of the data presented.

Page 1

- Unless otherwise noted, “projected totals” are based upon the average per day for the variable in question. For example, there was an average of 73,857 inmates per day in local jails (excluding Type I’s) during the three-month span of January thru March 2012.
- For some variables (other than ADP), we did not receive complete data from all jurisdictions. In such instances, we used statistical procedures to estimate the statewide total.
- The number for “Bookings” is the average of the monthly totals for January, February, and March 2012.
- For the following variables, the numbers presented are the totals as of the mid-quarter (i.e., February 15, 2012); Pretrial Release, Early Release, 2 and 3 Strikes, Felony Warrants, Misdemeanor Warrants, Juveniles in Custody and Undocumented Aliens.
- Assaults is the total number of serious inmate assaults on staff (resulting in a crime report), statewide, during the first quarter of calendar year 2012.
- Note: Totals are subject to slight variation due to rounding.

Pages 2 and 3

- The data in the 10-Year Summary tables are based upon survey data which the Corrections Standards Authority (CSA) has gathered since the early 1980’s.
- Prior to 1995, yearly averages were reported to the CSA on an annual basis. Yearly averages from 1996 to the present time have been the average of the 12 calendar months. In 1995, the yearly figure reported is the fourth quarter average, since we do not have data from the first three quarters.

CORRECTIONS STANDARDS AUTHORITY JAIL PROFILE SURVEY

Reporting Period: January to March, 2012

County Jail Populations

ADP ^a	73,857 ^b
Holding Areas	1,267
Average "Under the Roof" ^c	75,124 ^d
Highest One Day Count	78,796 ^e

Special Use Beds

Medical Beds	855
Mental Health Beds	3,462

County Jail Populations

Felony	60,826
Misdemeanor	13,031
Total	73,857
Non-Sentenced Males	41,994
Non-Sentenced Females	5,161
Sentenced Males	22,674
Sentenced Females	4,028
Total	73,857
Maximum Security Inmates	23,388
Medium Security Inmates	31,692
Minimum Security Inmates	18,777
Total	73,857

Released Per Month Due to Lack of Space

Pretrial Release	7,745 ^f
Early Release	5,021 ^f
Total	12,766

Inmates with 2 and 3 Strikes

2 Strike Inmates	2,784 ^g
3 Strike Inmates	1,054 ^g
Total	3,838

Unservd Warrants

Felony Warrants	228,345 ^g
Misdemeanor Warrants	1,399,448 ^g
Total	1,627,793

Inmates From Other Jurisdictions

Housed on Federal Contract	3,992
Housed on Contract with CDC	468
From Other Counties on Contract	17
Awaiting Transport	1,189
Total	5,666

Other Jail Profile Survey Variables

Bookings Per Month	86,861 ^f
Juveniles in Custody	0 ^f
Criminal / Illegal Aliens	9,595
Assaults On Staff	245

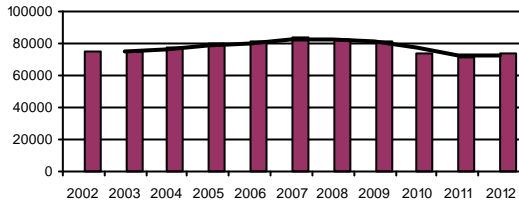
- a. The Average Daily Population for all jurisdictions (excluding Type I's) does not include inmates in holding areas.
- b. Unless otherwise indicated, the numbers reported are the average across the days in the quarter.
- c. "Under the Roof" is the sum of the Average Daily Population plus the average daily number of inmates in Holding Areas.
- d. Totals may not be the exact sum of the subtotals due to rounding.
- e. The sum of all Highest One Day inmate population counts from all jurisdictions.
- f. These data are collected on a monthly basis, this figure is an average of the total numbers collected each month during this quarter.
- g. These data are one-day snapshots collected at the end of the quarter.

Jail Profile Survey

2012

Average Daily Population

10 Year Summary									
2002	2003	2004	2005	2006	2007	2008	2009	2010	2011
75,096	75,243	76,887	79,705	81,104	83,184	82,397	80,866	73,445	71,018



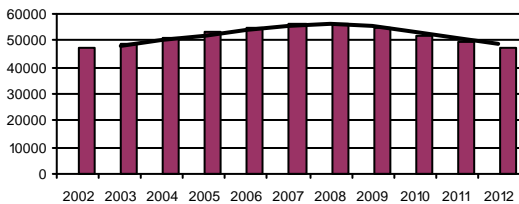
The Average Daily Population (ADP) of 73,857 for the first quarter of 2012 reflects a 2.4% increase over the fourth quarter of 2011. The ADP for the first quarter of 2012 is 3.9% higher than the first quarter of 2011. This reflects a third consecutive quarterly increase in ADP.

Quarterly Results

	Q1	Q2	Q3	Q4	Average
2011	71,090	69,515	71,293	72,161	71,018
2012	73,857				73,857

Non-sentenced ADP

10 Year Summary									
2002	2003	2004	2005	2006	2007	2008	2009	2010	2011
47,053	49,121	50,715	53,357	54,585	56,571	56,232	54,589	52,059	49,708



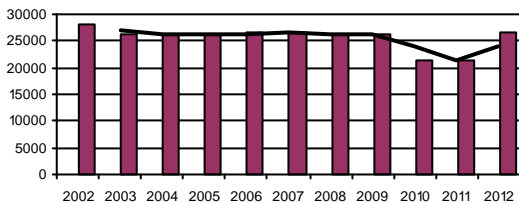
The Non-Sentenced ADP was 47,155 for the first quarter of 2012 reflecting a decrease of 2.7% from the fourth quarter of 2011 and a decrease of 7% from the first quarter of 2011.

Quarterly Results

	Q1	Q2	Q3	Q4	Average
2011	50,726	49,269	50,396	48,457	49,708
2012	47,155				47,155

Sentenced ADP

10 Year Summary									
2002	2003	2004	2005	2006	2007	2008	2009	2010	2011
28,043	26,121	26,171	26,347	26,519	26,613	26,165	26,277	21,386	21,310



The Sentenced ADP was 26,703 for the first quarter of 2012 reflecting an increase of 12.7% over the fourth quarter of 2011 and an increase of 31.1% over first quarter of 2011. This increase is attributed to AB109 Realignment.

Quarterly Results

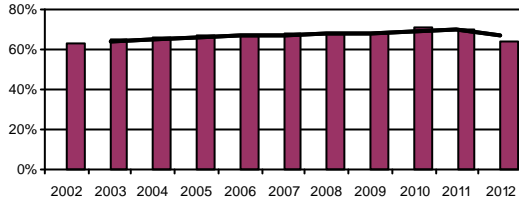
	Q1	Q2	Q3	Q4	Average
2011	20,363	20,245	20,897	23,702	21,310
2012	26,703				26,703

Jail Profile Survey

2012

Percentage Non-sentenced

10 Year Summary									
2002	2003	2004	2005	2006	2007	2008	2009	2010	2011
63%	65%	66%	67%	67%	68%	68%	68%	71%	70%



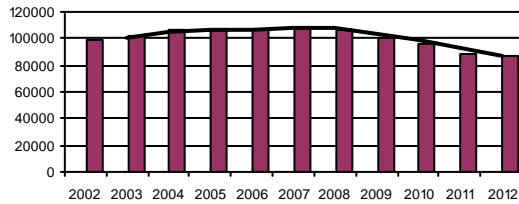
The Percentage of Non-Sentenced inmates for the first quarter 2012 decreased to 64% of ADP from 67% for the fourth quarter 2011. In the first quarter 2011 non-sentenced inmates accounted for 71% of ADP.

Quarterly Results

	Q1	Q2	Q3	Q4	Average
2011	71%	71%	71%	67%	70%
2012	64%				64%

Average Number of Persons Booked Per Month

10 Year Summary									
2002	2003	2004	2005	2006	2007	2008	2009	2010	2011
98,603	102,217	106,862	107,120	106,868	108,238	107,086	101,223	96,460	88,614



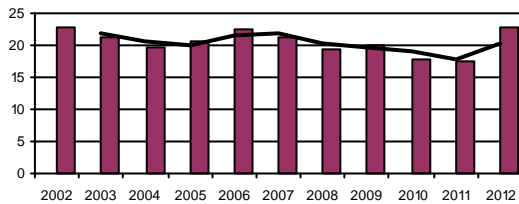
The Average Number of Persons Booked Per Month in the first quarter of 2012 of 86,861 reflects a 5% increase over the fourth quarter of 2012 and a decrease of 2.4% from the first quarter of 2011.

Quarterly Results

	Q1	Q2	Q3	Q4	Average
2011	89,030	89,960	93,062	82,429	88,614
2012	86,861				86,861

Average Length Of Stay

10 Year Summary									
2002	2003	2004	2005	2006	2007	2008	2009	2010	2011
22.7	21.2	19.8	20.5	22.5	21.4	19.4	20.0	17.9	17.5



The Average Length of Stay (ALS) of 22.9 days in the first quarter of 2012 increased 21.2% over the fourth quarter 2011 ALS of 18.9 days. The ALS for the first quarter of 2012 and reflects a 33.9% increase over the ALS of 17.1 days for the first quarter of 2011.

Quarterly Results

	Q1	Q2	Q3	Q4	Average
2011	17.1	17.0	17.1	18.9	17.5
2012	22.9				22.9

Average Daily Population

Non-sentenced / Sentenced Male / Female

California County Jails - For Months Of January - March 2012

	Non-sentenced						Sentenced						Total
	Male		Female		Total		Male		Female		Total		
	#	%	#	%	#	%	#	%	#	%	#	%	
1. Alameda Sheriff's Dept.	2,156	92%	199	8%	2,355	72%	848	91%	85	9%	934	28%	3,288
2. Amador Sheriff's Dept.	51	84%	10	16%	61	58%	37	82%	8	18%	45	42%	106
3. Butte Sheriff's Dept.	394	90%	41	10%	435	74%	132	87%	20	13%	152	26%	587
4. Calaveras Sheriff's Dept.	44	85%	8	15%	51	77%	11	74%	4	26%	15	23%	67
5. Colusa Sheriff's Dept.	31	74%	11	26%	41	63%	19	81%	5	19%	24	37%	65
6. Contra Costa Sheriff's Dept.	960	87%	139	13%	1,099	74%	368	93%	26	7%	394	26%	1,493
7. Del Norte Sheriff's Dept.	49	86%	8	14%	57	56%	37	85%	7	15%	44	44%	101
8. El Dorado Sheriff's Dept.	140	86%	22	14%	163	46%	159	85%	29	15%	188	54%	351
9. Fresno Sheriff's Dept.	1,456	89%	175	11%	1,631	69%	577	80%	142	20%	719	31%	2,349
10. Glenn Sheriff's Dept.	60	88%	8	12%	68	75%	20	85%	3	15%	23	25%	91
11. Humboldt Sheriff's Dept.	230	83%	46	17%	276	71%	99	88%	14	12%	113	29%	389
12. Imperial Sheriff's Dept.	283	89%	37	11%	320	72%	113	89%	14	11%	127	28%	447
13. Inyo Sheriff's Dept.	35	83%	7	17%	42	70%	15	82%	3	18%	19	30%	61
14. Kern Sheriff's Dept.	1,627	91%	160	9%	1,787	71%	614	85%	109	15%	723	29%	2,511
15. Kings Sheriff's Dept.	234	90%	25	10%	259	55%	175	82%	38	18%	212	45%	471
16. Lake Sheriff's Dept.	142	91%	14	9%	155	52%	110	77%	34	23%	144	48%	299
17. Lassen Sheriff's Dept.	35	71%	14	29%	49	50%	40	80%	10	20%	49	50%	98
18. Los Angeles Sheriff's Dept.	8,600	90%	974	10%	9,574	60%	5,362	85%	925	15%	6,287	40%	15,861
19. Madera Corrections Dept.	255	87%	37	13%	292	69%	120	89%	15	11%	134	31%	427
20. Marin Sheriff's Dept.	187	88%	25	12%	213	77%	51	80%	13	20%	64	23%	276
21. Mariposa Sheriff's Dept.	15	88%	2	12%	17	44%	17	79%	5	21%	22	56%	39
22. Mendocino Sheriff's Dept.	132	89%	17	11%	149	61%	78	81%	18	19%	97	39%	246
23. Merced Sheriff's Dept.	460	90%	50	10%	510	80%	117	90%	13	10%	131	20%	641
24. Modoc Sheriff's Dept.	10	81%	2	19%	12	54%	8	81%	2	19%	10	46%	22
25. Mono Sheriff's Dept.	9	84%	2	16%	11	47%	12	97%	0	3%	12	53%	23
26. Monterey Sheriff's Dept.	668	87%	96	13%	764	72%	247	82%	54	18%	301	28%	1,065
27. Napa Corrections Dept.	159	93%	12	7%	171	66%	75	87%	11	13%	87	34%	257
28. Nevada Sheriff's Dept.	91	85%	17	15%	108	58%	70	88%	10	12%	79	42%	187
29. Orange Sheriff's Dept.	2,714	89%	319	11%	3,033	50%	2,640	85%	450	15%	3,090	50%	6,123
30. Placer Sheriff's Dept.	325	88%	46	12%	370	65%	164	83%	33	17%	196	35%	567
31. Plumas Sheriff's Dept.	12	63%	7	37%	19	51%	13	71%	5	29%	19	49%	38
32. Riverside Sheriff's Dept.	2,285	90%	259	10%	2,544	66%	1,088	83%	218	17%	1,306	34%	3,850
33. Sacramento Sheriff's Dept.	1,585	94%	106	6%	1,691	49%	1,455	84%	272	16%	1,727	51%	3,418
34. San Benito Sheriff's Dept.	72	84%	14	16%	86	64%	42	85%	7	15%	49	36%	136
35. San Bernardino Sheriff's Dept.	3,646	88%	487	12%	4,133	77%	1,053	86%	174	14%	1,227	23%	5,360

Average Daily Population

Non-sentenced / Sentenced Male / Female

California County Jails - For Months Of January - March 2012

	Non-sentenced						Sentenced						Total #
	Male		Female		Total		Male		Female		Total		
	#	%	#	%	#	%	#	%	#	%	#	%	
36 . San Diego Sheriff's Dept.	2,455	86%	388	14%	2,843	58%	1,749	83%	348	17%	2,097	42%	4,940
37 . San Diego Work Furlough	0	50%	0	50%	1	0%	148	76%	48	24%	196	100%	196
38 . San Francisco Sheriff's Dept.	1,185	90%	134	10%	1,318	83%	221	85%	40	15%	261	17%	1,579
39 . San Joaquin Sheriff's Dept.	729	90%	77	10%	805	66%	361	86%	58	14%	419	34%	1,225
40 . San Luis Obispo Sheriff's Dept.	277	85%	49	15%	325	53%	238	83%	50	17%	288	47%	613
41 . San Mateo Sheriff's Dept.	550	90%	64	10%	615	63%	300	85%	55	15%	355	37%	970
42 . Santa Ana Police Dept.	360	82%	80	18%	441	99%	4	100%	0	0%	4	1%	445
43 . Santa Barbara Sheriff's Dept.	558	86%	89	14%	646	68%	262	88%	36	12%	298	32%	944
44 . Santa Clara Corrections Dept.	2,178	88%	295	12%	2,473	70%	890	85%	154	15%	1,043	30%	3,516
45 . Santa Cruz Sheriff's Dept.	219	92%	18	8%	237	60%	135	86%	21	14%	157	40%	394
46 . Shasta Sheriff's Dept.	154	88%	21	12%	175	76%	46	82%	10	18%	56	24%	231
47 . Sierra Sheriff's Dept.	0	100%	0	0%	0	13%	2	85%	0	15%	2	87%	3
48 . Siskiyou Sheriff's Dept.	63	91%	6	9%	69	78%	17	87%	3	13%	20	22%	89
49 . Solano Sheriff's Dept.	525	88%	73	12%	597	72%	204	87%	30	13%	234	28%	831
50 . Sonoma Sheriff's Dept.	439	88%	59	12%	498	48%	469	88%	64	12%	533	52%	1,032
51 . Stanislaus Sheriff's Dept.	806	91%	83	9%	890	77%	208	80%	53	20%	261	23%	1,151
52 . Sutter Sheriff's Dept.	135	88%	18	12%	153	80%	28	75%	9	25%	38	20%	191
53 . Tehama Sheriff's Dept.	99	85%	17	15%	116	62%	62	89%	8	11%	70	38%	187
54 . Trinity Sheriff's Dept.	15	88%	2	12%	17	30%	33	85%	6	15%	39	70%	56
55 . Tulare Sheriff's Dept.	700	89%	88	11%	788	51%	619	83%	124	17%	743	49%	1,531
56 . Tuolumne Sheriff's Dept.	55	79%	15	21%	70	56%	39	72%	15	28%	54	44%	124
57 . Ventura Sheriff's Dept.	830	88%	111	12%	941	68%	368	83%	77	17%	445	32%	1,386
58 . Ventura Work Furlough	0	0%	0	0%	0	0%	71	86%	11	14%	83	100%	83
59 . Yolo Sheriff's Dept.	231	90%	27	10%	258	62%	133	84%	24	16%	157	38%	416
60 . Yuba Sheriff's Dept.	278	84%	54	16%	332	80%	77	92%	7	8%	84	20%	416
Statewide	41,994	89%	5,161	11%	47,155	64%	22,674	85%	4,028	15%	26,703	36%	73,858

Jail Populations: Quarter 1, 2011 Versus Quarter 1, 2012

Jurisdiction	Qtr 1, 2011	Qtr 1, 2012	Qtr 1, 2012 Minus Qtr 1, 2011	Qtr 1, 2011 To Qtr 1, 2012 % +/-	% of Total Increase or Decrease	Cum %	Cum Total
Los Angeles Sheriff's Dept.	14,672	15,862	1,190	8.1%	24.8%	24.83%	1,190
Riverside Sheriff's Dept.	3,150	3,850	700	22.2%	14.6%	39.44%	1,890
Fresno Sheriff's Dept.	1,784	2,350	566	31.7%	11.8%	51.25%	2,456
Orange Sheriff's Dept.	5,723	6,123	400	7.0%	8.3%	59.60%	2,856
San Diego Sheriff's Dept.	4,605	4,941	336	7.3%	7.0%	66.61%	3,192
Tulare Sheriff's Dept.	1,270	1,531	261	20.6%	5.4%	72.06%	3,453
Stanislaus Sheriff's Dept.	995	1,150	155	15.6%	3.2%	75.29%	3,608
Kings Sheriff's Dept.	324	472	148	45.7%	3.1%	78.38%	3,756
Kern Sheriff's Dept.	2,366	2,511	145	6.1%	3.0%	81.41%	3,901
San Luis Obispo Sheriff's Dept.	502	613	111	22.1%	2.3%	83.72%	4,012
San Bernardino Sheriff's Dept.	5,253	5,360	107	2.0%	2.2%	85.96%	4,119
Lake Sheriff's Dept.	209	300	91	43.5%	1.9%	87.85%	4,210
Sonoma Sheriff's Dept.	961	1,032	71	7.4%	1.5%	89.34%	4,281
Placer Sheriff's Dept.	506	567	61	12.1%	1.3%	90.61%	4,342
Solano Sheriff's Dept.	778	832	54	6.9%	1.1%	91.74%	4,396
Santa Barbara Sheriff's Dept.	894	944	50	5.6%	1.0%	92.78%	4,446
El Dorado Sheriff's Dept.	303	350	47	15.5%	1.0%	93.76%	4,493
Butte Sheriff's Dept.	544	588	44	8.1%	0.9%	94.68%	4,537
San Joaquin Sheriff's Dept.	1,183	1,225	42	3.6%	0.9%	95.56%	4,579
Amador Sheriff's Dept.	74	105	31	41.9%	0.6%	96.20%	4,610
Mendocino Sheriff's Dept.	219	245	26	11.9%	0.5%	96.74%	4,636
Madera Corrections Dept.	403	427	24	6.0%	0.5%	97.25%	4,660
Tehama Sheriff's Dept.	169	186	17	10.1%	0.4%	97.60%	4,677
Colusa Sheriff's Dept.	51	66	15	29.4%	0.3%	97.91%	4,692
Trinity Sheriff's Dept.	42	56	14	33.3%	0.3%	98.21%	4,706
Ventura Work Furlough	69	82	13	18.8%	0.3%	98.48%	4,719
Nevada Sheriff's Dept.	175	187	12	6.9%	0.3%	98.73%	4,731
San Benito Sheriff's Dept.	125	136	11	8.8%	0.2%	98.96%	4,742
Lassen Sheriff's Dept.	88	99	11	12.5%	0.2%	99.19%	4,753
Glenn Sheriff's Dept.	82	91	9	11.0%	0.2%	99.37%	4,762
Yuba Sheriff's Dept.	408	416	8	2.0%	0.2%	99.54%	4,770
Tuolumne Sheriff's Dept.	117	124	7	6.0%	0.1%	99.69%	4,777
Mariposa Sheriff's Dept.	36	40	4	11.1%	0.1%	99.77%	4,781
Yolo Sheriff's Dept.	411	415	4	1.0%	0.1%	99.85%	4,785
Merced Sheriff's Dept.	638	641	3	0.5%	0.1%	99.92%	4,788
Sutter Sheriff's Dept.	188	191	3	1.6%	0.1%	99.98%	4,791
Humboldt Sheriff's Dept.	389	390	1	0.3%	0.0%	100.00%	4,792
Shasta Sheriff's Dept.	231	231	0	0.0%	0.0%	100.00%	4,792
Modoc Sheriff's Dept.	23	22	-1	-4.3%	0.0%	0.05%	-1
Santa Ana Police Dept.	446	445	-1	-0.2%	0.0%	0.10%	-2
Sierra Sheriff's Dept.	6	3	-3	-50.0%	0.1%	0.25%	-5
Siskiyou Sheriff's Dept.	94	89	-5	-5.3%	0.2%	0.49%	-10
Plumas Sheriff's Dept.	43	37	-6	-14.0%	0.3%	0.79%	-16
Mono Sheriff's Dept.	29	22	-7	-24.1%	0.3%	1.14%	-23
Marin Sheriff's Dept.	284	276	-8	-2.8%	0.4%	1.53%	-31
Napa Corrections Dept.	268	257	-11	-4.1%	0.5%	2.07%	-42
Calaveras Sheriff's Dept.	80	66	-14	-17.5%	0.7%	2.77%	-56
Del Norte Sheriff's Dept.	117	101	-16	-13.7%	0.8%	3.56%	-72
Inyo Sheriff's Dept.	77	60	-17	-22.1%	0.8%	4.40%	-89
Monterey Sheriff's Dept.	1,084	1,065	-19	-1.8%	0.9%	5.33%	-108
San Mateo Sheriff's Dept.	996	970	-26	-2.6%	1.3%	6.62%	-134
Santa Cruz Sheriff's Dept.	423	394	-29	-6.9%	1.4%	8.05%	-163
Ventura Sheriff's Dept.	1,428	1,385	-43	-3.0%	2.1%	10.17%	-206
Contra Costa Sheriff's Dept.	1,543	1,493	-50	-3.2%	2.5%	12.64%	-256
Santa Clara Corrections Dept.	3,567	3,516	-51	-1.4%	2.5%	15.16%	-307
San Diego Work Furlough	289	196	-93	-32.2%	4.6%	19.75%	-400
Imperial Sheriff's Dept.	553	447	-106	-19.2%	5.2%	24.99%	-506
San Francisco Sheriff's Dept.	1,729	1,580	-149	-8.6%	7.4%	32.35%	-655
Alameda Sheriff's Dept.	3,837	3,288	-549	-14.3%	27.1%	59.46%	-1,204
Sacramento Sheriff's Dept.	4,239	3,418	-821	-19.4%	40.5%	100.00%	-2,025
	71,092	73,859	2,767	Note: Totals subject to slight variation due to rounding			
		Total Increase:	4,792				
		Total Decrease:	-2,025				

Interpretation of Table

JAIL POPULATIONS: 1st Qtr Calendar Year '11 versus 1st Qtr Calendar Year '12

This table:

- summarizes the ADP results for the 60 jurisdictions in California reporting data from Type II, III, and IV jails;
- summarizes jurisdiction ADP results for the most recent quarter (Third Column from left);
- compares jurisdiction ADP for the most recent quarter with the same quarter last year (Second Column);
- ranks the jurisdictions in terms of gains or losses in ADP from high to low (Fourth Column);
- lists the percentage growth or decline in ADP for each jurisdiction (Fifth Column);
- lists the percentage of the overall State increase or decrease in ADP that is represented by each jurisdiction (Sixth Column);
- lists, by jurisdiction, the cumulative percentage increase and decrease in the State ADP starting with the jurisdiction with the highest percentage of the increase and proceeding to the jurisdiction with the highest percentage of the decrease (Seventh Column);
- lists, by jurisdiction, the cumulative total increase and decrease in the State ADP starting with the jurisdiction with the highest increase and proceeding to the jurisdiction with the biggest decrease (Eighth Column); and,
- lists the jurisdictions that experienced decreases in their ADP as shaded.

Some important conclusions from this table are:

1. The two numbers at the bottom indicate the "total increase" in ADP (in this case 4,792) and "total decrease" in ADP (2,025). In other words, the jurisdictions experiencing increases had a total increase of 4,792 ADP; and the jurisdictions experiencing decreases had a total decrease of 2,025 ADP. Subtracting 2,025 from 4,792 produces the overall increase of 2,767 between the first quarter of calendar year 2011 and the first quarter of calendar year 2012.
2. The Los Angeles County Sheriff's Department ADP increase of 1,190 is 24.8% of the total increase of 4,792. Thirty-seven jurisdictions had increases (down to Humboldt County Sheriff's Department) with one jurisdiction (Shasta County Sheriff's Department) reporting no change. When you get to Humboldt County Sheriff's Department, you have accounted for 100% of the increase (100% of the cumulative total of 4,792).
3. Jurisdictions that experienced a decrease in ADP are listed from smallest decrease to largest decrease (Modoc County Sheriff's Department to Sacramento County Sheriff's Department). When you get to the bottom of the table, you have accounted for 100% of the total decrease of 2,025 inmates.
4. The cumulative percentage of ADP increase for the top four jurisdictions (Los Angeles County Sheriff's Department, Riverside County Sheriff's Department, Fresno County Sheriff's Department and Orange County Sheriff's Department) is 59.60%. In other words, four jurisdictions accounted for over 59% of the total ADP increase. Four jurisdictions (Imperial County Sheriff's Department, San Francisco County Sheriff's Department, Alameda County Sheriff's Department, and Sacramento County Sheriff's Department) account for 80.2% of the decreases.