

# JAIL PROFILE SURVEY

## **2008, 2nd QUARTER SURVEY RESULTS**

**FACILITIES STANDARDS AND OPERATIONS DIVISION**

**CORRECTONS STANDARDS AUTHORITY**

**STATE OF CALIFORNIA**

**600 Bercut Drive**

**Sacramento, CA 95811**

**(916) 445-5073**

**[www.csa.ca.gov](http://www.csa.ca.gov)**

# JAIL PROFILE SURVEY

## EXPLANATION OF RESULTS

The following link titles contain the Jail Profile Survey results for the second quarter of the calendar year 2008. Quarterly Totals contains the second quarter totals based upon the monthly and quarterly data submitted to us by the participating jurisdictions. The next six (6) link titles show the trend data for variables we have been tracking for the last ten years (Average Number of Persons Booked, Average Length of Stay, Average Daily Population, Percentage Non-Sentenced, Non-Sentenced ADP, and Sentenced ADP). The remainder of this page provides explanations and clarifications of the data presented.

### Quarterly Totals link

- Unless otherwise noted, “projected totals” are based upon the average per day for the variable in question. For example, there was an average of 82,658 inmates per day in local jails (excluding Type I’s) during the three-month span of April thru June 2008.
- For some variables (other than ADP), we did not receive complete data from all jurisdictions. In such instances, we used statistical procedures to estimate the statewide total.
- The number for “Bookings” is the average of the monthly totals for April, May, and June.
- For the following variables, the numbers presented are the totals as of the mid-quarter (i.e., May 15, 2008); Pretrial Release, Early Release, 2 and 3 Strikes, Felony Warrants, Misdemeanor Warrants, Juveniles in Custody and Undocumented Aliens.
- “Assaults” is the total number of serious inmate assaults on staff (resulting in a crime report), statewide, during the second quarter of calendar year 2008.

### Average Number of Persons Booked, Average Length of Stay, Average Daily Population, Percentage Non-Sentenced, Non-Sentenced ADP, and Sentenced ADP links

- The data in the 10-Year Summary tables are based upon survey data which the Corrections Standards Authority has gathered since the early 1980’s.
- Prior to 1995, yearly averages were reported to the CSA on an annual basis. Yearly averages from 1996 to the present time have been the average of the 12 calendar months. In 1995, the yearly figure reported is the fourth quarter average, since we do not have data from the first three quarters.

# CORRECTIONS STANDARDS AUTHORITY JAIL PROFILE SURVEY

**Reporting Period: April to June, 2008**

## County Jail Populations

ADP <sup>a</sup>	82,658 <sup>b</sup>
Holding Areas	1,529
Average "Under the Roof" <sup>c</sup>	84,187 <sup>d</sup>
Highest One Day Count	87,405 <sup>e</sup>

## County Jail Populations

Felony	65,348
Misdemeanor	17,310
<b>Total</b>	<b>82,658</b>
Non-Sentenced Males	49,518
Non-Sentenced Females	6,678
Sentenced Males	22,441
Sentenced Females	4,021
<b>Total</b>	<b>82,658</b>
Maximum Security Inmates	21,975
Medium Security Inmates	37,736
Minimum Security Inmates	22,947
<b>Total</b>	<b>82,658</b>

## Inmates From Other Jurisdictions

Housed on Federal Contract	3,657
Housed on Contract with CDC	1,774
From Other Counties on Contract	15
Awaiting Transport	2,317
<b>Total</b>	<b>7,763</b>

## Special Use Beds

Medical Beds	986
Mental Health Beds	3,405

## Released Per Month Due to Lack of Space

Pretrial Release	9,411 <sup>f</sup>
Early Release	7,728 <sup>f</sup>
<b>Total</b>	<b>17,139</b>

## Inmates with 2 and 3 Strikes

2 Strike Inmates	1,328 <sup>g</sup>
3 Strike Inmates	746 <sup>g</sup>
<b>Total</b>	<b>2,074</b>

## Unservd Warrants

Felony Warrants	230,635 <sup>g</sup>
Misdemeanor Warrants	1,663,884 <sup>g</sup>
<b>Total</b>	<b>1,894,519</b>

## Other Jail Profile Survey Variables

Bookings Per Month	108,927 <sup>f</sup>
Juveniles in Custody	6 <sup>f</sup>
Criminal / Illegal Aliens	12,216
Assaults On Staff	295

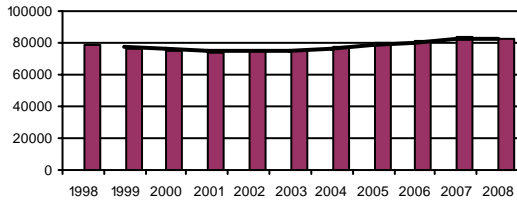
- a. The Average Daily Population for all jurisdictions (excluding Type I's) does not include inmates in holding areas.
- b. Unless otherwise indicated, the numbers reported are the average across the days in the quarter.
- c. "Under the Roof" is the sum of the Average Daily Population plus the average daily number of inmates in Holding Areas.
- d. Totals may not be the exact sum of the subtotals due to rounding.
- e. The sum of all Highest One Day inmate population counts from all jurisdictions.
- f. These data are collected on a monthly basis, this figure is an average of the total numbers collected each month during this quarter.
- g. These data are one-day snapshots collected at the end of the quarter.

# Jail Profile Survey

2008

## Average Daily Population

10 Year Summary									
1998	1999	2000	2001	2002	2003	2004	2005	2006	2007
79,143	76,311	75,044	73,824	75,096	75,243	76,887	79,705	81,104	83,184



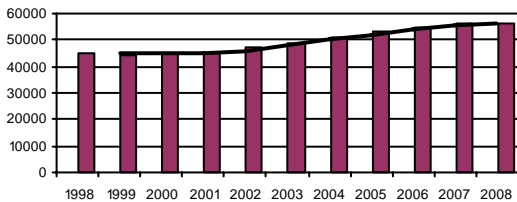
The Average Daily Population (ADP) for the second quarter of 2008 reflects a slight increase over the first quarter of 2008; however, it is a 1.08% decrease over the second quarter of 2007 lending support to a reversal of the uptrend in ADP since 2001.

## Quarterly Results

	Q1	Q2	Q3	Q4	Average
2007	82,451	83,564	84,046	82,662	83,184
2008	82,404	82,658			82,531

## Non-sentenced ADP

10 Year Summary									
1998	1999	2000	2001	2002	2003	2004	2005	2006	2007
45,303	44,509	44,940	45,187	47,053	49,121	50,715	53,357	54,585	56,571



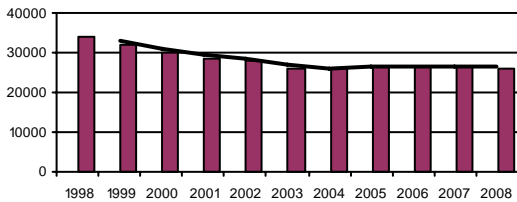
The Non-Sentenced ADP population was 56,196 for the second quarter of 2008. Not only is this a decrease from the first quarter of 2008, it also reflects a 1.08% decrease from the second quarter of 2007.

## Quarterly Results

	Q1	Q2	Q3	Q4	Average
2007	56,377	56,810	57,078	56,016	56,571
2008	56,504	56,196			56,350

## Sentenced ADP

10 Year Summary									
1998	1999	2000	2001	2002	2003	2004	2005	2006	2007
33,841	31,802	30,109	28,637	28,043	26,121	26,171	26,347	26,519	26,613



The Sentenced ADP reflects a 2.12% increase over the first quarter of 2008; however, it shows a decrease of 1.09% from the second quarter of 2007.

## Quarterly Results

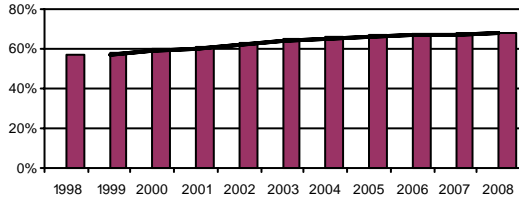
	Q1	Q2	Q3	Q4	Average
2007	26,074	26,755	26,969	26,646	26,613
2008	25,900	26,462			26,181

# Jail Profile Survey

2008

## Percentage Non-sentenced

10 Year Summary									
1998	1999	2000	2001	2002	2003	2004	2005	2006	2007
57%	58%	60%	61%	63%	65%	66%	67%	67%	68%



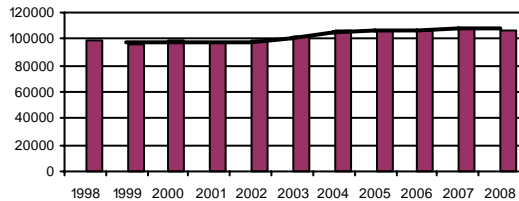
The Percentage of Non-Sentenced inmates decreased slightly in the second quarter of 2008 from the first quarter of 2008; however, this was not enough to stall the continuation of an upward trend.

## Quarterly Results

	Q1	Q2	Q3	Q4	Average
2007	68%	68%	68%	68%	68%
2008	69%	68%			68%

## Average Number of Persons Booked Per Month

10 Year Summary									
1998	1999	2000	2001	2002	2003	2004	2005	2006	2007
99,229	96,684	98,486	97,089	98,603	102,217	106,862	107,120	106,868	108,238



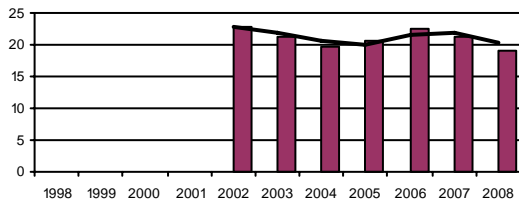
The Average Number of Persons Booked Per Month in the second quarter of 2008 increased over the first quarter of 2008 but was reflects a slight decrease from the second quarter in 2007.

## Quarterly Results

	Q1	Q2	Q3	Q4	Average
2007	108,332	110,002	111,452	103,187	108,238
2008	105,503	108,927			107,215

## Average Length Of Stay

10 Year Summary									
1998	1999	2000	2001	2002	2003	2004	2005	2006	2007
				22.7	21.2	19.8	20.5	22.5	21.4



The Average Length of Stay in the second quarter of 2008 slightly decreased from the first quarter of 2008 and reflects an 11.16% decrease from the second quarter in 2007.

## Quarterly Results

	Q1	Q2	Q3	Q4	Average
2007	23.6	21.5	19.7	20.6	21.4
2008	19.2	19.1			19.1

# Average Daily Population

Non-sentenced / Sentenced Male / Female

California County Jails - For Months Of April - June 2008

	Non-sentenced						Sentenced						Total
	Male		Female		Total		Male		Female		Total		
	#	%	#	%	#	%	#	%	#	%	#	%	
1. Alameda Sheriff's Dept.	3,244	92%	295	8%	3,539	80%	761	86%	125	14%	886	20%	4,424
2. Amador Sheriff's Dept.	38	76%	12	24%	49	56%	27	71%	11	29%	38	44%	87
3. Butte Sheriff's Dept.	253	85%	43	15%	296	63%	134	77%	41	23%	175	37%	471
4. Calaveras Sheriff's Dept.	46	89%	6	11%	52	67%	23	91%	2	9%	25	33%	77
5. Colusa Sheriff's Dept.	28	95%	1	5%	29	62%	16	89%	2	11%	18	38%	47
6. Contra Costa Sheriff's Dept.	868	88%	118	12%	986	67%	435	91%	41	9%	476	33%	1,461
7. Del Norte Sheriff's Dept.	71	88%	10	12%	81	57%	47	76%	14	24%	61	43%	142
8. El Dorado Sheriff's Dept.	159	91%	17	9%	175	50%	151	87%	22	13%	173	50%	348
9. Fresno Sheriff's Dept.	1,757	90%	196	10%	1,953	72%	642	83%	127	17%	769	28%	2,722
10. Glenn Sheriff's Dept.	62	90%	7	10%	69	65%	28	77%	9	23%	37	35%	106
11. Humboldt Sheriff's Dept.	197	86%	32	14%	229	67%	98	86%	16	14%	114	33%	343
12. Imperial Sheriff's Dept.	304	89%	39	11%	342	68%	143	90%	16	10%	160	32%	502
13. Inyo Sheriff's Dept.	30	89%	4	11%	34	42%	35	73%	13	27%	48	58%	82
14. Kern Sheriff's Dept.	1,650	88%	230	12%	1,880	81%	329	75%	109	25%	438	19%	2,318
15. Kings Sheriff's Dept.	188	90%	22	10%	210	58%	115	76%	36	24%	151	42%	361
16. Lake Sheriff's Dept.	123	83%	25	17%	148	64%	67	80%	17	20%	84	36%	232
17. Lassen Sheriff's Dept.	33	80%	8	20%	42	49%	32	73%	12	27%	44	51%	85
18. Los Angeles Sheriff's Dept.	11,854	88%	1,594	12%	13,448	70%	5,052	89%	636	11%	5,689	30%	19,137
19. Madera Corrections Dept.	242	85%	42	15%	284	68%	111	81%	26	19%	137	32%	421
20. Marin Sheriff's Dept.	229	87%	33	13%	262	80%	51	75%	17	25%	67	20%	330
21. Mariposa Sheriff's Dept.	25	88%	3	12%	28	51%	21	81%	5	19%	26	49%	54
22. Mendocino Sheriff's Dept.	160	87%	23	13%	183	67%	70	77%	20	23%	90	33%	273
23. Merced Sheriff's Dept.	492	89%	62	11%	554	76%	156	91%	15	9%	171	24%	725
24. Modoc Sheriff's Dept.	10	88%	1	12%	11	56%	6	70%	3	30%	9	44%	20
25. Mono Sheriff's Dept.	15	94%	1	6%	16	43%	19	90%	2	10%	21	57%	36
26. Monterey Sheriff's Dept.	790	89%	95	11%	885	80%	186	85%	33	15%	219	20%	1,105
27. Napa Corrections Dept.	144	90%	16	10%	160	68%	67	87%	10	13%	76	32%	236
28. Nevada Sheriff's Dept.	100	79%	26	21%	127	67%	53	84%	10	16%	63	33%	190
29. Orange Sheriff's Dept.	2,824	88%	388	12%	3,212	53%	2,380	85%	433	15%	2,813	47%	6,025
30. Placer Sheriff's Dept.	323	88%	46	12%	369	63%	179	83%	36	17%	215	37%	583
31. Plumas Sheriff's Dept.	17	91%	2	9%	18	51%	14	79%	4	21%	17	49%	36
32. Riverside Sheriff's Dept.	2,663	91%	254	9%	2,916	81%	594	85%	107	15%	701	19%	3,618
33. Sacramento Sheriff's Dept.	2,466	90%	284	10%	2,750	60%	1,566	85%	267	15%	1,832	40%	4,583
34. San Benito Sheriff's Dept.	65	93%	5	7%	70	56%	49	87%	7	13%	56	44%	125
35. San Bernardino Sheriff's Dept.	3,615	86%	565	14%	4,180	76%	1,076	81%	247	19%	1,323	24%	5,503

## Average Daily Population

Non-sentenced / Sentenced Male / Female

California County Jails - For Months Of April - June 2008

	Non-sentenced						Sentenced						Total
	Male		Female		Total		Male		Female		Total		
	#	%	#	%	#	%	#	%	#	%	#	%	
36. San Diego Sheriff's Dept.	2,871	86%	478	14%	3,348	64%	1,553	82%	346	18%	1,899	36%	5,247
37. San Diego Work Furlough	0	0%	0	0%	0	0%	175	74%	60	26%	235	100%	235
38. San Francisco Sheriff's Dept.	1,397	88%	191	12%	1,588	78%	380	84%	70	16%	449	22%	2,038
39. San Joaquin Sheriff's Dept.	741	87%	108	13%	849	55%	586	84%	110	16%	696	45%	1,545
40. San Luis Obispo Sheriff's Dept.	206	88%	29	12%	235	46%	229	83%	48	17%	277	54%	512
41. San Mateo Sheriff's Dept.	659	88%	88	12%	747	65%	345	85%	63	15%	408	35%	1,155
42. Santa Ana Police Dept.	390	87%	59	13%	450	99%	4	85%	1	15%	4	1%	454
43. Santa Barbara Sheriff's Dept.	506	85%	90	15%	596	63%	294	84%	55	16%	348	37%	944
44. Santa Clara Corrections Dept.	2,753	88%	379	12%	3,131	68%	1,245	86%	205	14%	1,449	32%	4,580
45. Santa Cruz Sheriff's Dept.	165	88%	23	12%	188	40%	251	89%	32	11%	284	60%	472
46. Shasta Sheriff's Dept.	218	86%	36	14%	253	75%	73	88%	10	12%	83	25%	336
47. Sierra Sheriff's Dept.	2	67%	1	33%	3	64%	2	100%	0	0%	2	36%	5
48. Siskiyou Sheriff's Dept.	64	93%	5	7%	69	81%	13	78%	4	22%	16	19%	85
49. Solano Sheriff's Dept.	655	86%	106	14%	761	74%	220	83%	46	17%	266	26%	1,027
50. Sonoma Sheriff's Dept.	495	87%	73	13%	568	55%	396	83%	79	17%	474	45%	1,043
51. Stanislaus Sheriff's Dept.	732	88%	97	12%	829	61%	434	81%	103	19%	537	39%	1,366
52. Sutter Sheriff's Dept.	157	89%	20	11%	177	67%	61	71%	25	29%	86	33%	263
53. Tehama Sheriff's Dept.	73	86%	12	14%	85	49%	66	73%	24	27%	90	51%	175
54. Trinity Sheriff's Dept.	15	79%	4	21%	19	41%	24	91%	2	9%	26	59%	45
55. Tulare Sheriff's Dept.	652	87%	102	13%	753	49%	674	86%	108	14%	782	51%	1,535
56. Tuolumne Sheriff's Dept.	71	81%	17	19%	88	63%	43	85%	7	15%	51	37%	138
57. Ventura Sheriff's Dept.	1,022	86%	163	14%	1,185	70%	432	84%	83	16%	515	30%	1,700
58. Ventura Work Furlough	0	0%	0	0%	0	0%	88	79%	24	21%	112	100%	112
59. Yolo Sheriff's Dept.	296	87%	43	13%	340	80%	72	83%	15	17%	87	20%	426
60. Yuba Sheriff's Dept.	295	85%	52	15%	347	85%	53	83%	11	17%	63	15%	410
<b>Statewide</b>	<b>49,519</b>	<b>88%</b>	<b>6,678</b>	<b>12%</b>	<b>56,196</b>	<b>68%</b>	<b>22,441</b>	<b>85%</b>	<b>4,021</b>	<b>15%</b>	<b>26,462</b>	<b>32%</b>	<b>82,658</b>

## Jail Populations: Quarter 2, 2007 Versus Quarter 2, 2008

Jurisdiction	Qtr 2, 2007	Qtr 2, 2008	Qtr 2, 2008 Minus Qtr 2, 2007	Qtr 2, 2007 To Qtr 2, 2008 % +/-	% of Total Increase or Decrease	Cum %	Cum Total
Los Angeles Sheriff's Dept.	18,562	19,137	575	3.1%	42.0%	42.03%	575
San Diego Sheriff's Dept.	4,959	5,247	288	5.8%	21.1%	63.08%	863
Alameda Sheriff's Dept.	4,227	4,424	197	4.7%	14.4%	77.49%	1,060
San Francisco Sheriff's Dept.	1,919	2,037	118	6.1%	8.6%	86.11%	1,178
Kings Sheriff's Dept.	323	361	38	11.8%	2.8%	88.89%	1,216
Sacramento Sheriff's Dept.	4,553	4,582	29	0.6%	2.1%	91.01%	1,245
Santa Ana Police Dept.	426	454	28	6.6%	2.0%	93.06%	1,273
Kern Sheriff's Dept.	2,298	2,317	19	0.8%	1.4%	94.44%	1,292
San Diego Work Furlough	223	234	11	4.9%	0.8%	95.25%	1,303
Nevada Sheriff's Dept.	178	189	11	6.2%	0.8%	96.05%	1,314
Amador Sheriff's Dept.	77	88	11	14.3%	0.8%	96.86%	1,325
Marin Sheriff's Dept.	320	329	9	2.8%	0.7%	97.51%	1,334
Trinity Sheriff's Dept.	37	45	8	21.6%	0.6%	98.10%	1,342
Mendocino Sheriff's Dept.	267	273	6	2.2%	0.4%	98.54%	1,348
Del Norte Sheriff's Dept.	136	142	6	4.4%	0.4%	98.98%	1,354
Inyo Sheriff's Dept.	76	82	6	7.9%	0.4%	99.42%	1,360
Yolo Sheriff's Dept.	423	427	4	0.9%	0.3%	99.71%	1,364
Tuolumne Sheriff's Dept.	136	139	3	2.2%	0.2%	99.93%	1,367
San Benito Sheriff's Dept.	125	126	1	0.8%	0.1%	100.00%	1,368
Calaveras Sheriff's Dept.	78	77	-1	-1.3%	0.0%	0.04%	-1
San Luis Obispo Sheriff's Dept.	514	512	-2	-0.4%	0.1%	0.13%	-3
Napa Corrections Dept.	238	236	-2	-0.8%	0.1%	0.22%	-5
Santa Barbara Sheriff's Dept.	946	944	-2	-0.2%	0.1%	0.31%	-7
Sierra Sheriff's Dept.	8	5	-3	-37.5%	0.1%	0.44%	-10
El Dorado Sheriff's Dept.	351	348	-3	-0.9%	0.1%	0.57%	-13
Siskiyou Sheriff's Dept.	90	86	-4	-4.4%	0.2%	0.75%	-17
Mono Sheriff's Dept.	40	36	-4	-10.0%	0.2%	0.92%	-21
Modoc Sheriff's Dept.	26	20	-6	-23.1%	0.3%	1.19%	-27
Mariposa Sheriff's Dept.	61	54	-7	-11.5%	0.3%	1.50%	-34
Merced Sheriff's Dept.	733	725	-8	-1.1%	0.4%	1.85%	-42
Butte Sheriff's Dept.	481	472	-9	-1.9%	0.4%	2.24%	-51
Ventura Work Furlough	123	113	-10	-8.1%	0.4%	2.68%	-61
Tehama Sheriff's Dept.	186	176	-10	-5.4%	0.4%	3.12%	-71
Tulare Sheriff's Dept.	1,544	1,534	-10	-0.6%	0.4%	3.56%	-81
Glenn Sheriff's Dept.	118	107	-11	-9.3%	0.5%	4.05%	-92
Madera Corrections Dept.	431	420	-11	-2.6%	0.5%	4.53%	-103
Placer Sheriff's Dept.	596	584	-12	-2.0%	0.5%	5.06%	-115
Yuba Sheriff's Dept.	424	410	-14	-3.3%	0.6%	5.68%	-129
Plumas Sheriff's Dept.	52	36	-16	-30.8%	0.7%	6.38%	-145
Colusa Sheriff's Dept.	65	48	-17	-26.2%	0.7%	7.13%	-162
Stanislaus Sheriff's Dept.	1,386	1,366	-20	-1.4%	0.9%	8.01%	-182
Shasta Sheriff's Dept.	357	336	-21	-5.9%	0.9%	8.93%	-203
Sutter Sheriff's Dept.	287	263	-24	-8.4%	1.1%	9.99%	-227
Imperial Sheriff's Dept.	528	502	-26	-4.9%	1.1%	11.13%	-253
San Bernardino Sheriff's Dept.	5,531	5,504	-27	-0.5%	1.2%	12.32%	-280
Lassen Sheriff's Dept.	113	85	-28	-24.8%	1.2%	13.55%	-308
Santa Clara Corrections Dept.	4,613	4,581	-32	-0.7%	1.4%	14.96%	-340
Sonoma Sheriff's Dept.	1,086	1,043	-43	-4.0%	1.9%	16.85%	-383
Santa Cruz Sheriff's Dept.	516	471	-45	-8.7%	2.0%	18.83%	-428
Humboldt Sheriff's Dept.	388	343	-45	-11.6%	2.0%	20.81%	-473
Lake Sheriff's Dept.	282	231	-51	-18.1%	2.2%	23.05%	-524
Monterey Sheriff's Dept.	1,157	1,105	-52	-4.5%	2.3%	25.34%	-576
San Mateo Sheriff's Dept.	1,221	1,155	-66	-5.4%	2.9%	28.24%	-642
Solano Sheriff's Dept.	1,111	1,027	-84	-7.6%	3.7%	31.94%	-726
San Joaquin Sheriff's Dept.	1,631	1,545	-86	-5.3%	3.8%	35.72%	-812
Ventura Sheriff's Dept.	1,802	1,700	-102	-5.7%	4.5%	40.21%	-914
Santa Clara Probation Dept.	116		-116	-100.0%	5.1%	45.31%	-1,030
Riverside Sheriff's Dept.	3,772	3,617	-155	-4.1%	6.8%	52.13%	-1,185
Contra Costa Sheriff's Dept.	1,622	1,461	-161	-9.9%	7.1%	59.22%	-1,346
Fresno Sheriff's Dept.	3,118	2,722	-396	-12.7%	17.4%	76.64%	-1,742
Orange Sheriff's Dept.	6,556	6,025	-531	-8.1%	23.4%	100.00%	-2,273
	83,563	82,658	-905	Note: Totals subject to slight variation due to rounding			
		Total Increase:	1,368				
		Total Decrease:	-2,273				



**Interpretation of Table:**  
**JAIL POPULATIONS: 2<sup>nd</sup> Qtr Calendar Year '07 versus 2<sup>nd</sup> Qtr Calendar Year '08**

This table:

- summarizes the ADP results for the 60 jurisdictions in California reporting data from Type II, III, and IV jails;
- summarizes jurisdiction ADP results for the most recent quarter (Column C);
- compares jurisdiction ADP for the most recent quarter with the same quarter last year (Column B);
- ranks the jurisdictions in terms of gains or losses in ADP from high to low (Column D);
- lists the percentage growth or decline in ADP for each jurisdiction (Column E);
- lists the percentage of the overall State increase or decrease in ADP that is represented by each jurisdiction (Column F);
- lists, by jurisdiction, the cumulative percentage increase and decrease in the State ADP starting with the jurisdiction with the highest percentage of the increase and proceeding to the jurisdiction with the highest percentage of the decrease (Column G);
- lists, by jurisdiction, the cumulative total increase and decrease in the State ADP starting with the jurisdiction with the highest increase and proceeding to the jurisdiction with the biggest decrease (Column H); and,
- lists the jurisdictions that experienced decreases in their ADP as shaded.

Some important conclusions from this table are:

1. The two numbers at the bottom indicate the "total increase" in ADP (in this case 1,368) and "total decrease" in ADP (-2,273). In other words, the jurisdictions experiencing increases had a total increase of 1,368 ADP; and the jurisdictions experiencing decreases had a total decrease of 2,273 ADP. Subtracting 2,273 from 1,368 produces the overall decrease of 905 between the second quarter of calendar year 2007 and the second quarter of calendar year 2008.
2. The Los Angeles County ADP increase of 575 is 42.0% of the total increase of 1,368. Nineteen jurisdictions had increases (down to San Benito County Sheriff's Department) with no jurisdictions reporting no increase. When you get to San Benito Sheriff's Department, you have accounted for 100% of the increases (100% of the cumulative total of 1,368).
3. Jurisdictions that experienced a decrease in ADP are listed from smallest decrease to largest decrease (Calaveras County Sheriff's Department to Orange County Sheriff's Department). When you get to the bottom of the table, you have accounted for 100% of the total decreases of 2,273 inmates.
4. The cumulative percentage of ADP increase for the top four jurisdictions (Los Angeles County Sheriff's Department to San Francisco County Sheriff's Department) is 86.11%. In other words, four jurisdictions accounted for over 86% of the total ADP increase. Four jurisdictions (Riverside County Sheriff's Department, Contra Costa Sheriff's Department, Fresno County Sheriff's Department, and Orange County Sheriff's Department) account for almost 55% of the decreases. Note: Santa Clara Probation Department closed June 30, 2007.