

JAIL PROFILE SURVEY

2007, 4th QUARTER SURVEY RESULTS

**FACILITIES STANDARDS AND OPERATIONS DIVISION
CORRECTIONS STANDARDS AUTHORITY**

STATE OF CALIFORNIA
600 Bercut Drive
Sacramento, CA 95811
(916) 445-5073
www.csa.ca.gov

JAIL PROFILE SURVEY

EXPLANATION OF RESULTS

The following link titles contain the Jail Profile Survey results for the fourth quarter of the calendar year 2007. **Quarterly Totals** contains the fourth quarter totals based upon the monthly and quarterly data submitted to us by the participating jurisdictions. The next six (6) link titles show the trend data for variables we have been tracking for the last ten years (**Average Number of Persons Booked**, **Average Length of Stay**, **Average Daily Population**, **Percentage Non-Sentenced**, **Non-Sentenced ADP**, and **Sentenced ADP**). The remainder of this page provides explanations and clarifications of the data presented.

Quarterly Totals link

- Unless otherwise noted, “projected totals” are based upon the average per day for the variable in question. For example, there was an average of 82,662 inmates per day in local jails (excluding Type I’s) during the three-month span of October thru December 2007.
- For some variables (other than ADP), we did not receive complete data from all jurisdictions. In such instances, we used statistical procedures to estimate the statewide total.
- The number for “Bookings” is the average of the monthly totals for October, November, and December.
- For the following variables, the numbers presented are the totals as of the mid-quarter (i.e., November 15, 2007); Pretrial Release, Early Release, 2 and 3 Strikes, Felony Warrants, Misdemeanor Warrants, Juveniles in Custody and Undocumented Aliens.
- “Assaults” is the total number of serious inmate assaults on staff (resulting in a crime report), statewide, during the fourth quarter of calendar year 2007.

Average Number of Persons Booked, **Average Length of Stay**, **Average Daily Population**, **Percentage Non-Sentenced**, **Non-Sentenced ADP**, and **Sentenced ADP** links

- The data in the 10-Year Summary tables are based upon survey data which the Corrections Standards Authority has gathered since the early 1980’s.
- Prior to 1995, yearly averages were reported to the CSA on an annual basis. Yearly averages from 1996 to the present time have been the average of the 12 calendar months. In 1995, the yearly figure reported is the fourth quarter average, since we do not have data from the first three quarters.

CORRECTIONS STANDARDS AUTHORITY JAIL PROFILE SURVEY

Reporting Period: October to December, 2007

County Jail Populations

ADP ^a	82,662 ^b
Holding Areas	1,759
Average "Under the Roof" ^c	84,421 ^d
Highest One Day Count	87,827 ^e

Special Use Beds

Medical Beds	943
Mental Health Beds	3,262

County Jail Populations

Felony	64,675
Misdemeanor	17,987
Total	82,662
Non-Sentenced Males	49,461
Non-Sentenced Females	6,555
Sentenced Males	22,635
Sentenced Females	4,011
Total	82,662
Maximum Security Inmates	21,579
Medium Security Inmates	38,297
Minimum Security Inmates	22,786
Total	82,662

Released Per Month Due to Lack of Space

Pretrial Release	8,731 ^f
Early Release	6,991 ^f
Total	15,722

Inmates with 2 and 3 Strikes

2 Strike Inmates	1,968 ^g
3 Strike Inmates	698 ^g
Total	2,666

Unservd Warrants

Felony Warrants	288,784 ^g
Misdemeanor Warrants	2,302,743 ^g
Total	2,591,527

Inmates From Other Jurisdictions

Housed on Federal Contract	3,474
Housed on Contract with CDC	1,725
From Other Counties on Contract	120
Awaiting Transport	1,989
Total	7,308

Other Jail Profile Survey Variables

Bookings Per Month	103,187 ^f
Juveniles in Custody	2 ^f
Criminal / Illegal Aliens	11,573
Assaults On Staff	269

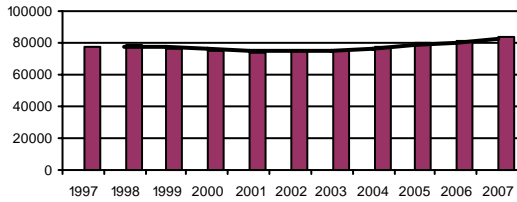
- a. The Average Daily Population for all jurisdictions (excluding Type I's) does not include inmates in holding areas.
- b. Unless otherwise indicated, the numbers reported are the average across the days in the quarter.
- c. "Under the Roof" is the sum of the Average Daily Population plus the average daily number of inmates in Holding Areas.
- d. Totals may not be the exact sum of the subtotals due to rounding.
- e. The sum of all Highest One Day inmate population counts from all jurisdictions.
- f. These data are collected on a monthly basis, this figure is an average of the total numbers collected each month during this quarter.
- g. These data are one-day snapshots collected at the end of the quarter.

Jail Profile Survey

2007

Average Daily Population

10 Year Summary									
1997	1998	1999	2000	2001	2002	2003	2004	2005	2006
76,938	79,143	76,311	75,044	73,824	75,096	75,243	76,887	79,705	81,104



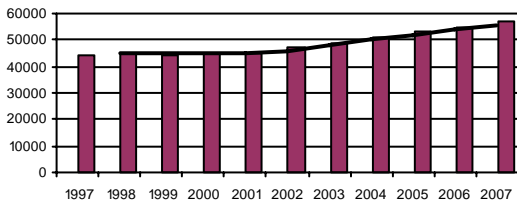
The Average Daily Population (ADP) shows a decrease in the fourth quarter of 2007. While the ADP for this quarter declined, there has been a major uptrend in ADP since 2001, and the 2007 average (83,184) exceeds historical highs with a 2.5% increase over 2006.

Quarterly Results

	Q1	Q2	Q3	Q4	Average
2006	80,167	80,714	81,639	81,870	81,104
2007	82,451	83,564	84,046	82,662	83,184

Non-sentenced ADP

10 Year Summary									
1997	1998	1999	2000	2001	2002	2003	2004	2005	2006
44,593	45,303	44,509	44,940	45,187	47,053	49,121	50,715	53,357	54,585



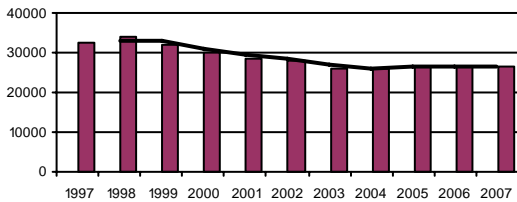
The Non-Sentenced ADP population was 56,016 for the fourth quarter of 2007. While this is a decrease from the three previous quarters, the 2007 average (56,628) exceeds historical highs and is 3.7% over the 2006 non-sentenced population average.

Quarterly Results

	Q1	Q2	Q3	Q4	Average
2006	53,937	54,029	54,688	55,666	54,585
2007	56,377	56,810	57,304	56,016	56,628

Sentenced ADP

10 Year Summary									
1997	1998	1999	2000	2001	2002	2003	2004	2005	2006
32,347	33,841	31,802	30,109	28,637	28,043	26,121	26,171	26,347	26,519



The Sentenced ADP for the fourth quarter of 2007 reflects a decrease from the third quarter of 2007. The 2007 average (26,556) is slightly higher than 2006 sentenced population average.

Quarterly Results

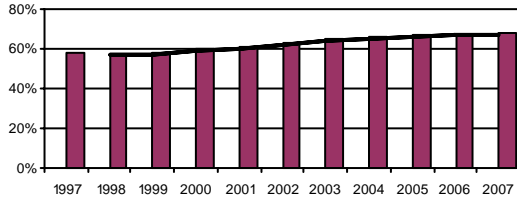
	Q1	Q2	Q3	Q4	Average
2006	26,229	26,684	26,952	26,204	26,519
2007	26,074	26,755	26,742	26,646	26,556

Jail Profile Survey

2007

Percentage Non-sentenced

10 Year Summary									
1997	1998	1999	2000	2001	2002	2003	2004	2005	2006
58%	57%	58%	60%	61%	63%	65%	66%	67%	67%



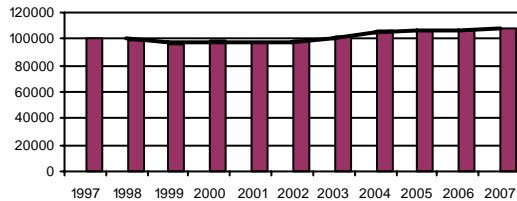
The Percentage of Non-Sentenced inmates stayed at 68% throughout 2007, resulting in a 1% increase over the average percentage of non-sentenced reported in 2006.

Quarterly Results

	Q1	Q2	Q3	Q4	Average
2006	67%	67%	67%	68%	67%
2007	68%	68%	68%	68%	68%

Average Number of Persons Booked Per Month

10 Year Summary									
1997	1998	1999	2000	2001	2002	2003	2004	2005	2006
101,210	99,229	96,684	98,486	97,089	98,603	102,217	106,862	107,120	106,868



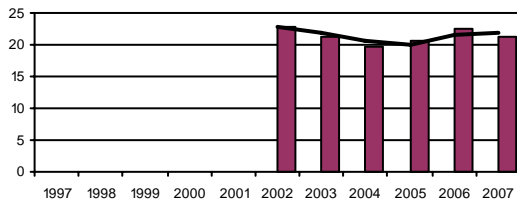
The Average Number of Persons Booked Per Month in the fourth quarter of 2007 decreased from the third quarter of 2007. While the number of bookings declined this quarter, the average number of persons booked in 2007 (108,238) is a historical high and exceeds the 2006 average by 1.3%.

Quarterly Results

	Q1	Q2	Q3	Q4	Average
2006	104,194	106,838	110,473	105,909	106,868
2007	108,332	110,002	111,452	103,187	108,238

Average Length Of Stay

10 Year Summary									
1997	1998	1999	2000	2001	2002	2003	2004	2005	2006
					22.7	21.2	19.8	20.5	22.5



The Average Length of Stay in the fourth quarter of 2007 increased slightly over the third quarter; however, the 2007 average is a full day shorter than the 2006 average.

Quarterly Results

	Q1	Q2	Q3	Q4	Average
2006	22.6	21.7	22.9	22.9	22.5
2007	23.6	21.5	19.7	20.6	21.4

Average Daily Population

Non-sentenced / Sentenced Male / Female

California County Jails - For Months Of October - December 2007

	Non-sentenced						Sentenced						Total
	Male		Female		Total		Male		Female		Total		
	#	%	#	%	#	%	#	%	#	%	#	%	
1 . Alameda Sheriff's Dept.	2,979	93%	233	7%	3,212	78%	810	88%	115	12%	925	22%	4,137
2 . Amador Sheriff's Dept.	39	87%	6	13%	45	59%	24	77%	7	23%	31	41%	75
3 . Butte Sheriff's Dept.	275	86%	46	14%	321	64%	143	78%	41	22%	184	36%	504
4 . Calaveras Sheriff's Dept.	41	87%	6	13%	47	64%	24	89%	3	11%	27	36%	74
5 . Colusa Sheriff's Dept.	29	85%	5	15%	35	66%	15	85%	3	15%	18	34%	52
6 . Contra Costa Sheriff's Dept.	964	87%	148	13%	1,112	69%	463	91%	43	9%	507	31%	1,619
7 . Del Norte Sheriff's Dept.	74	91%	7	9%	82	59%	44	76%	14	24%	57	41%	139
8 . El Dorado Sheriff's Dept.	157	86%	25	14%	182	54%	131	86%	21	14%	152	46%	334
9 . Fresno Sheriff's Dept.	2,029	90%	214	10%	2,243	78%	568	88%	78	12%	647	22%	2,890
10 . Glenn Sheriff's Dept.	57	84%	11	16%	68	63%	30	77%	9	23%	39	37%	107
11 . Humboldt Sheriff's Dept.	175	81%	42	19%	217	61%	111	80%	27	20%	138	39%	355
12 . Imperial Sheriff's Dept.	198	84%	36	16%	234	53%	184	89%	23	11%	207	47%	441
13 . Inyo Sheriff's Dept.	22	75%	7	25%	29	34%	47	83%	9	17%	56	66%	86
14 . Kern Sheriff's Dept.	1,537	87%	222	13%	1,758	77%	410	79%	112	21%	522	23%	2,280
15 . Kings Sheriff's Dept.	151	86%	25	14%	176	50%	138	78%	40	22%	177	50%	354
16 . Lake Sheriff's Dept.	125	87%	18	13%	143	60%	73	77%	22	23%	94	40%	237
17 . Lassen Sheriff's Dept.	37	82%	8	18%	46	50%	33	71%	13	29%	46	50%	92
18 . Los Angeles Sheriff's Dept.	11,867	89%	1,497	11%	13,364	69%	5,230	88%	700	12%	5,930	31%	19,293
19 . Madera Corrections Dept.	312	87%	47	13%	359	90%	32	83%	7	17%	39	10%	397
20 . Marin Sheriff's Dept.	219	89%	27	11%	246	84%	41	88%	6	12%	46	16%	292
21 . Mariposa Sheriff's Dept.	26	84%	5	16%	31	53%	25	88%	3	12%	28	47%	59
22 . Mendocino Sheriff's Dept.	173	89%	21	11%	193	68%	67	76%	22	24%	89	32%	282
23 . Merced Sheriff's Dept.	476	90%	54	10%	530	73%	170	89%	22	11%	192	27%	722
24 . Modoc Sheriff's Dept.	9	84%	2	16%	10	54%	8	88%	1	12%	9	46%	19
25 . Mono Sheriff's Dept.	16	96%	1	4%	16	48%	16	92%	1	8%	17	52%	34
26 . Monterey Sheriff's Dept.	771	88%	105	12%	876	76%	241	86%	40	14%	281	24%	1,157
27 . Napa Corrections Dept.	119	87%	18	13%	137	62%	70	83%	14	17%	84	38%	221
28 . Nevada Sheriff's Dept.	96	87%	14	13%	110	67%	44	81%	10	19%	54	33%	165
29 . Orange Sheriff's Dept.	2,806	88%	401	12%	3,207	53%	2,332	83%	463	17%	2,795	47%	6,001
30 . Placer Sheriff's Dept.	323	88%	45	12%	368	63%	178	83%	36	17%	214	37%	582
31 . Plumas Sheriff's Dept.	20	79%	5	21%	25	47%	22	76%	7	24%	28	53%	53
32 . Riverside Sheriff's Dept.	2,922	91%	284	9%	3,206	86%	452	88%	64	12%	516	14%	3,722
33 . Sacramento Sheriff's Dept.	2,450	89%	289	11%	2,739	61%	1,491	84%	284	16%	1,775	39%	4,514
34 . San Benito Sheriff's Dept.	58	84%	11	16%	69	61%	40	91%	4	9%	44	39%	113
35 . San Bernardino Sheriff's Dept.	3,708	87%	554	13%	4,262	78%	1,001	81%	235	19%	1,236	22%	5,497

Average Daily Population

Non-sentenced / Sentenced Male / Female

California County Jails - For Months Of October - December 2007

	<u>Jurisdiction</u>	Non-sentenced						Sentenced						Total
		Male		Female		Total		Male		Female		Total		
		#	%	#	%	#	%	#	%	#	%	#	%	
36 .	San Diego Sheriff's Dept.	2,887	86%	465	14%	3,352	64%	1,543	83%	309	17%	1,852	36%	5,204
37 .	San Diego Work Furlough	0	0%	0	0%	0	0%	188	80%	47	20%	235	100%	235
38 .	San Francisco Sheriff's Dept.	1,427	88%	188	12%	1,615	80%	352	86%	58	14%	410	20%	2,025
39 .	San Joaquin Sheriff's Dept.	710	88%	100	12%	811	53%	616	85%	111	15%	727	47%	1,538
40 .	San Luis Obispo Sheriff's Dept	211	86%	33	14%	245	48%	225	84%	42	16%	267	52%	512
41 .	San Mateo Sheriff's Dept.	504	89%	63	11%	567	50%	481	84%	88	16%	569	50%	1,136
42 .	Santa Ana Police Dept.	373	88%	52	12%	426	98%	9	97%	0	3%	10	2%	435
43 .	Santa Barbara Sheriff's Dept.	525	86%	87	14%	612	65%	281	84%	55	16%	336	35%	948
44 .	Santa Clara Corrections Dept.	2,721	88%	370	12%	3,091	66%	1,327	85%	232	15%	1,558	34%	4,649
45 .	Santa Cruz Sheriff's Dept.	189	87%	28	13%	217	44%	239	85%	42	15%	281	56%	498
46 .	Shasta Sheriff's Dept.	207	84%	40	16%	247	70%	89	85%	16	15%	105	30%	352
47 .	Sierra Sheriff's Dept.	5	82%	1	18%	6	71%	2	86%	0	14%	2	29%	8
48 .	Siskiyou Sheriff's Dept.	65	92%	5	8%	70	81%	14	84%	3	16%	16	19%	86
49 .	Solano Sheriff's Dept.	675	86%	114	14%	789	76%	209	83%	41	17%	250	24%	1,039
50 .	Sonoma Sheriff's Dept.	504	87%	73	13%	578	55%	397	84%	74	16%	471	45%	1,048
51 .	Stanislaus Sheriff's Dept.	708	87%	106	13%	815	60%	451	82%	101	18%	552	40%	1,366
52 .	Sutter Sheriff's Dept.	138	83%	27	17%	165	68%	56	73%	21	27%	77	32%	242
53 .	Tehama Sheriff's Dept.	81	88%	11	12%	92	55%	57	76%	18	24%	75	45%	166
54 .	Trinity Sheriff's Dept.	12	82%	3	18%	15	35%	23	86%	4	14%	27	65%	42
55 .	Tulare Sheriff's Dept.	662	86%	104	14%	766	50%	686	88%	92	12%	779	50%	1,544
56 .	Tuolumne Sheriff's Dept.	69	80%	17	20%	86	62%	43	82%	9	18%	53	38%	138
57 .	Ventura Sheriff's Dept.	957	87%	139	13%	1,096	67%	443	83%	88	17%	531	33%	1,628
58 .	Ventura Work Furlough	0	0%	0	0%	0	0%	77	77%	23	23%	99	100%	99
59 .	Yolo Sheriff's Dept.	295	88%	40	12%	335	81%	63	79%	16	21%	80	19%	415
60 .	Yuba Sheriff's Dept.	277	85%	49	15%	325	80%	59	72%	23	28%	82	20%	407
Statewide		49,461	88%	6,555	12%	56,016	68%	22,635	85%	4,011	15%	26,646	32%	82,662

Jail Populations: Quarter 4, 2006 Versus Quarter 4, 2007

Jurisdiction	Qtr 4, 2006	Qtr 4, 2007	Qtr 4, 2007 Minus Qtr 4, 2006	Qtr 4, 2006 To Qtr 4, 2007 % +/-	% of Total Increase or Decrease	Cum %	Cum Total
Los Angeles Sheriff's Dept.	18,440	19,293	853	4.6%	38.8%	38.81%	853
Riverside Sheriff's Dept.	3,469	3,723	254	7.3%	11.6%	50.36%	1,107
Santa Clara Corrections Dept.	4,455	4,650	195	4.4%	8.9%	59.24%	1,302
Sacramento Sheriff's Dept.	4,372	4,514	142	3.2%	6.5%	65.70%	1,444
San Bernardino Sheriff's Dept.	5,372	5,498	126	2.3%	5.7%	71.43%	1,570
Alameda Sheriff's Dept.	4,021	4,137	116	2.9%	5.3%	76.71%	1,686
San Joaquin Sheriff's Dept.	1,431	1,537	106	7.4%	4.8%	81.53%	1,792
Tulare Sheriff's Dept.	1,457	1,544	87	6.0%	4.0%	85.49%	1,879
San Francisco Sheriff's Dept.	1,939	2,025	86	4.4%	3.9%	89.40%	1,965
Kings Sheriff's Dept.	287	354	67	23.3%	3.0%	92.45%	2,032
Mendocino Sheriff's Dept.	232	283	51	22.0%	2.3%	94.77%	2,083
San Diego Work Furlough	209	235	26	12.4%	1.2%	95.95%	2,109
Stanislaus Sheriff's Dept.	1,339	1,365	26	1.9%	1.2%	97.13%	2,135
Del Norte Sheriff's Dept.	128	139	11	8.6%	0.5%	97.63%	2,146
Yolo Sheriff's Dept.	404	415	11	2.7%	0.5%	98.13%	2,157
San Mateo Sheriff's Dept.	1,126	1,136	10	0.9%	0.5%	98.59%	2,167
Mariposa Sheriff's Dept.	51	60	9	17.6%	0.4%	99.00%	2,176
Humboldt Sheriff's Dept.	348	355	7	2.0%	0.3%	99.32%	2,183
Sutter Sheriff's Dept.	238	242	4	1.7%	0.2%	99.50%	2,187
Lassen Sheriff's Dept.	88	92	4	4.5%	0.2%	99.68%	2,191
Mono Sheriff's Dept.	30	33	3	10.0%	0.1%	99.82%	2,194
Plumas Sheriff's Dept.	51	53	2	3.9%	0.1%	99.91%	2,196
Butte Sheriff's Dept.	502	504	2	0.4%	0.1%	100.00%	2,198
Colusa Sheriff's Dept.	52	52	0	0.0%	0.0%	100.00%	2,198
Sierra Sheriff's Dept.	8	8	0	0.0%	0.0%	100.00%	2,198
Calaveras Sheriff's Dept.	74	74	0	0.0%	0.0%	100.00%	2,198
Merced Sheriff's Dept.	724	722	-2	-0.3%	0.1%	0.14%	-2
Napa Corrections Dept.	225	221	-4	-1.8%	0.3%	0.43%	-6
Inyo Sheriff's Dept.	90	85	-5	-5.6%	0.4%	0.79%	-11
Trinity Sheriff's Dept.	46	41	-5	-10.9%	0.4%	1.14%	-16
Tuolumne Sheriff's Dept.	145	139	-6	-4.1%	0.4%	1.57%	-22
San Benito Sheriff's Dept.	119	113	-6	-5.0%	0.4%	2.00%	-28
Nevada Sheriff's Dept.	171	164	-7	-4.1%	0.5%	2.50%	-35
Santa Cruz Sheriff's Dept.	506	498	-8	-1.6%	0.6%	3.07%	-43
Kern Sheriff's Dept.	2,289	2,280	-9	-0.4%	0.6%	3.71%	-52
Santa Ana Police Dept.	444	435	-9	-2.0%	0.6%	4.35%	-61
Placer Sheriff's Dept.	591	581	-10	-1.7%	0.7%	5.07%	-71
Siskiyou Sheriff's Dept.	97	87	-10	-10.3%	0.7%	5.78%	-81
Ventura Work Furlough	111	99	-12	-10.8%	0.9%	6.64%	-93
Yuba Sheriff's Dept.	419	407	-12	-2.9%	0.9%	7.49%	-105
Amador Sheriff's Dept.	89	75	-14	-15.7%	1.0%	8.49%	-119
Santa Barbara Sheriff's Dept.	963	949	-14	-1.5%	1.0%	9.49%	-133
Modoc Sheriff's Dept.	33	19	-14	-42.4%	1.0%	10.49%	-147
Sonoma Sheriff's Dept.	1,064	1,048	-16	-1.5%	1.1%	11.63%	-163
Madera Corrections Dept.	412	396	-16	-3.9%	1.1%	12.78%	-179
San Luis Obispo Sheriff's Dept.	531	512	-19	-3.6%	1.4%	14.13%	-198
Shasta Sheriff's Dept.	371	352	-19	-5.1%	1.4%	15.49%	-217
Glenn Sheriff's Dept.	129	107	-22	-17.1%	1.6%	17.06%	-239
Imperial Sheriff's Dept.	465	442	-23	-4.9%	1.6%	18.70%	-262
Contra Costa Sheriff's Dept.	1,643	1,619	-24	-1.5%	1.7%	20.41%	-286
Marin Sheriff's Dept.	319	292	-27	-8.5%	1.9%	22.34%	-313
El Dorado Sheriff's Dept.	363	335	-28	-7.7%	2.0%	24.34%	-341
Tehama Sheriff's Dept.	196	167	-29	-14.8%	2.1%	26.41%	-370
Solano Sheriff's Dept.	1,070	1,039	-31	-2.9%	2.2%	28.62%	-401
Ventura Sheriff's Dept.	1,662	1,627	-35	-2.1%	2.5%	31.12%	-436
Lake Sheriff's Dept.	288	237	-51	-17.7%	3.6%	34.76%	-487
Monterey Sheriff's Dept.	1,229	1,156	-73	-5.9%	5.2%	39.97%	-560
San Diego Sheriff's Dept.	5,285	5,205	-80	-1.5%	5.7%	45.68%	-640
Orange Sheriff's Dept.	6,161	6,001	-160	-2.6%	11.4%	57.10%	-800
Santa Clara Probation Dept.	162		-162	-100.0%	11.6%	68.67%	-962
Fresno Sheriff's Dept.	3,329	2,890	-439	-13.2%	31.3%	100.00%	-1,401
	81,864	82,661	797	Note: Totals subject to slight variation due to rounding			
		Total Increase:	2,198				
		Total Decrease:	-1,401				

Interpretation of Table:
JAIL POPULATIONS: 4th Qtr Calendar Year '06 versus 4th Qtr Calendar Year '07

This table:

- summarizes the ADP results for the 60 jurisdictions in California reporting data from Type II, III, and IV jails;
- summarizes jurisdiction ADP results for the most recent quarter (Column C);
- compares jurisdiction ADP for the most recent quarter with the same quarter last year (Column B);
- ranks the jurisdictions in terms of gains or losses in ADP from high to low (Column D);
- lists the percentage growth or decline in ADP for each jurisdiction (Column E);
- lists the percentage of the overall State increase or decrease in ADP that is represented by each jurisdiction (Column F);
- lists, by jurisdiction, the cumulative percentage increase and decrease in the State ADP starting with the jurisdiction with the highest percentage of the increase and proceeding to the jurisdiction with the highest percentage of the decrease (Column G);
- lists, by jurisdiction, the cumulative total increase and decrease in the State ADP starting with the jurisdiction with the highest increase and proceeding to the jurisdiction with the biggest decrease (Column H); and,
- lists the jurisdictions that experienced decreases in their ADP as shaded.

Some important conclusions from this table are:

1. The two numbers at the bottom indicate the "total increase" in ADP (in this case 2,198) and "total decrease" in ADP (-1,401). In other words, the jurisdictions experiencing increases had a total increase of 2,198 ADP; and the jurisdictions experiencing decreases had a total decrease of 1,401 ADP. Subtracting 1,401 from 2,198 produces the overall increase of 797 between the fourth quarter of calendar year 2006 and the fourth quarter of calendar year 2007.
2. The Los Angeles County ADP increase of 853 is 38.8% of the total increase of 2,198. Twenty-three jurisdictions had increases (down to Butte County Sheriff's Department) with three jurisdiction reporting no increase (Colusa County Sheriff's Department, Sierra County Sheriff's Department and Calaveras County Sheriff's Department). When you get to Butte County Sheriff's Department, you have accounted for 100% of the increases (100% of the cumulative total of 2,198).
3. Jurisdictions that experienced a decrease in ADP are listed from smallest decrease to largest decrease (Merced County Sheriff's Department to Fresno County Sheriff's Department). When you get to the bottom of the table, you have accounted for 100% of the total decreases of 1,401 inmates.
4. The cumulative percentage of ADP increase for the top four jurisdictions (Los Angeles County Sheriff's Department to Sacramento County Sheriff's Department) is 65.7%. In other words, four jurisdictions accounted for over 65% of the total ADP increase. Four jurisdictions (San Diego Sheriff's Department, Orange County Sheriff's Department, Santa Clara Probation Department, and Fresno County Sheriff's Department) account for 60% of the decreases. Note: Santa Clara Probation closed June 30, 2007.