

JAIL PROFILE SURVEY

2006, 1st QUARTER SURVEY RESULTS

FACILITIES STANDARDS AND OPERATIONS DIVISION

CORRECTIONS STANDARDS AUTHORITY

STATE OF CALIFORNIA
600 Bercut Drive
Sacramento, CA 95814-0185
(916) 445-5073
www.csa.ca.gov

JAIL PROFILE SURVEY

EXPLANATION OF RESULTS

The following link titles contain the Jail Profile Survey results for the first quarter of 2006. **Quarterly Totals** contains the first quarter totals based upon the monthly and quarterly data submitted to us by the participating jurisdictions. The next six (6) link titles show the trend data for variables we have been tracking for the last ten years (**Average Number of Persons Booked**, **Average Length of Stay**, **Average Daily Population**, **Percentage Non-Sentenced**, **Non-Sentenced ADP**, and **Sentenced ADP**). The remainder of this page provides explanations and clarifications of the data presented.

Quarterly Totals link

- Unless otherwise noted, “projected totals” are based upon the average per day for the variable in question. For example, there was an average of 80,167 inmates per day in local jails (excluding Type I’s) during the three-month span of January thru March 2006.
- For some variables (other than ADP), we did not receive complete data from all jurisdictions. In such instances, we used statistical procedures to estimate the statewide total.
- The number for “Bookings” is the average of the monthly totals for January, February, and March.
- For the following variables, the numbers presented are the totals as of the mid-quarter (i.e., February 15, 2006); Pretrial Release, Early Release, 2 and 3 Strikes, Felony Warrants, Misdemeanor Warrants, Juveniles in Custody and Undocumented Aliens.
- “Assaults” is the total number of serious inmate assaults on staff (resulting in a crime report), statewide, during the first quarter of 2006.

Average Number of Persons Booked, Average Length of Stay, Average Daily Population, Percentage Non-Sentenced, Non-Sentenced ADP, and Sentenced ADP links

- The data in the 10-Year Summary tables are based upon survey data which the Corrections Standards Authority has gathered since the early 1980’s.
- Prior to 1995, yearly averages were reported to the CSA on an annual basis. Yearly averages from 1996 to the present time have been the average of the 12 calendar months. In 1995, the yearly figure reported is the fourth quarter average, since we do not have data from the first three quarters.

CORRECTIONS STANDARDS AUTHORITY JAIL PROFILE SURVEY

Reporting Period: January to March, 2006

County Jail Populations

ADP ^a	80,167 ^b
Holding Areas	1,998
Average "Under the Roof" ^c	82,165 ^d
Highest One Day Count	86,649 ^e

County Jail Populations

Felony	63,053
Misdemeanor	17,114
Total	80,167
Non-Sentenced Males	47,093
Non-Sentenced Females	6,545
Sentenced Males	22,606
Sentenced Females	3,923
Total	80,167
Maximum Security Inmates	24,274
Medium Security Inmates	38,460
Minimum Security Inmates	17,433
Total	80,167

Inmates From Other Jurisdictions

Housed on Federal Contract	3,409
Housed on Contract with CDC	2,397
From Other Counties on Contract	148
Awaiting Transport	2,072
Total	8,026

Special Use Beds

Medical Beds	995
Mental Health Beds	3,187

Released Per Month Due to Lack of Space

Pretrial Release	8,219 ^f
Early Release	9,425 ^f
Total	17,644

Inmates with 2 and 3 Strikes

2 Strike Inmates	3,554 ^g
3 Strike Inmates	1,255 ^g
Total	4,809

Unservd Warrants

Felony Warrants	290,484 ^g
Misdemeanor Warrants	2,249,291 ^g
Total	2,539,775

Other Jail Profile Survey Variables

Bookings Per Month	103,869 ^f
Juveniles in Custody	49 ^f
Criminal / Illegal Aliens	8,516
Assaults On Staff	297

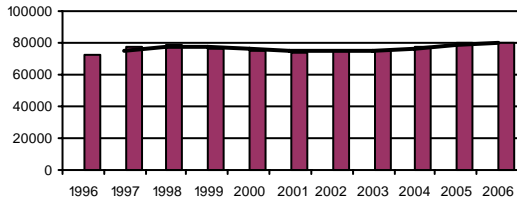
- a. The Average Daily Population for all jurisdictions (excluding Type I's) does not include inmates in holding areas.
- b. Unless otherwise indicated, the numbers reported are the average across the days in the quarter.
- c. "Under the Roof" is the sum of the Average Daily Population plus the average daily number of inmates in Holding Areas.
- d. Totals may not be the exact sum of the subtotals due to rounding.
- e. The sum of all Highest One Day inmate population counts from all jurisdictions.
- f. These data are collected on a monthly basis, this figure is an average of the total numbers collected each month during this quarter.
- g. These data are one-day snapshots collected at the end of the quarter.

Jail Profile Survey

2006

Average Daily Population

10 Year Summary									
1996	1997	1998	1999	2000	2001	2002	2003	2004	2005
72,007	76,938	79,143	76,311	75,044	73,824	75,156	75,340	76,939	79,638



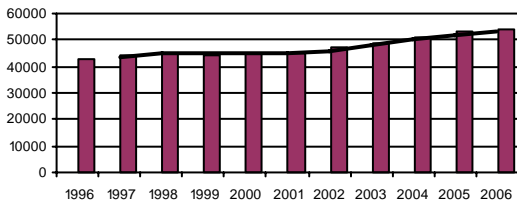
The average daily population (ADP) in jails fell slightly from the 4th quarter of 2005 but is significantly higher when compared to the same quarter of last year.

Quarterly Results

	Q1	Q2	Q3	Q4	Average
2005	77,357	79,222	81,200	80,720	79,638
2006	80,167				80,167

Non-sentenced ADP

10 Year Summary									
1996	1997	1998	1999	2000	2001	2002	2003	2004	2005
42,539	44,593	45,303	44,509	44,940	45,187	46,975	49,105	50,677	53,185



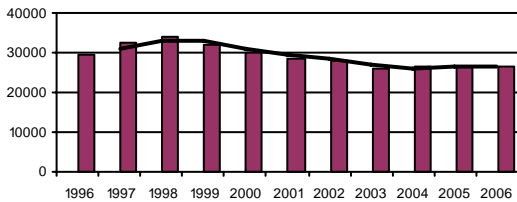
Consistent with the ADP, the non-sentenced population this quarter is slightly lower than in the 4th quarter of 2005 but is significantly higher when compared to the same quarter of last year.

Quarterly Results

	Q1	Q2	Q3	Q4	Average
2005	52,128	52,807	53,958	53,820	53,185
2006	53,638				53,638

Sentenced ADP

10 Year Summary									
1996	1997	1998	1999	2000	2001	2002	2003	2004	2005
29,468	32,347	33,841	31,802	30,109	28,637	28,180	26,235	26,262	26,453



The sentenced ADP was consistent with the non-sentenced ADP.

Quarterly Results

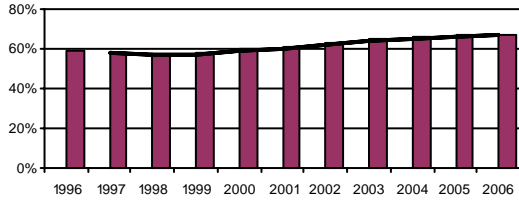
	Q1	Q2	Q3	Q4	Average
2005	25,229	26,415	27,241	26,901	26,453
2006	26,528				26,528

Jail Profile Survey

2006

Percentage Non-sentenced

10 Year Summary									
1996	1997	1998	1999	2000	2001	2002	2003	2004	2005
59%	58%	57%	58%	60%	61%	63%	65%	66%	67%



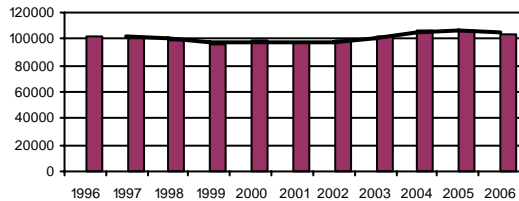
As a percentage of the overall population, the non-sentenced population remains stable at 67%.

Quarterly Results

	Q1	Q2	Q3	Q4	Average
2005	67%	67%	66%	67%	67%
2006	67%				67%

Average Number of Persons Booked Per Month

10 Year Summary									
1996	1997	1998	1999	2000	2001	2002	2003	2004	2005
101,767	101,210	99,229	96,684	98,486	97,089	98,625	102,217	106,605	106,940



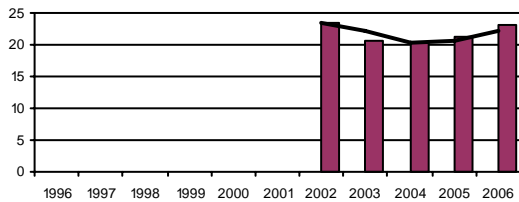
The average monthly bookings this quarter are up slightly from the 4th quarter of 2005 but significantly lower than the average for all of 2005.

Quarterly Results

	Q1	Q2	Q3	Q4	Average
2005	105,447	109,741	109,349	103,221	106,940
2006	103,869				103,869

Average Length Of Stay

10 Year Summary									
1996	1997	1998	1999	2000	2001	2002	2003	2004	2005
						23.6	20.5	20.2	21.3



The average length of stay was up 3-1/2 days per inmate this quarter. Average length of stay tends to vary a great deal from quarter to quarter.

Quarterly Results

	Q1	Q2	Q3	Q4	Average
2005	24.7	22.3	18.7	19.7	21.3
2006	23.2				23.2

Average Daily Population

Non-sentenced / Sentenced Male / Female

California County Jails - For Months Of January - March 2006

	Non-sentenced						Sentenced						Total
	Male		Female		Total		Male		Female		Total		
	#	%	#	%	#	%	#	%	#	%	#	%	
1 . Alameda Sheriff's Dept.	2,837	91%	275	9%	3,111	78%	753	84%	143	16%	896	22%	4,008
2 . Amador Sheriff's Dept.	41	82%	9	18%	50	59%	26	75%	9	25%	35	41%	86
3 . Butte Sheriff's Dept.	255	85%	46	15%	300	56%	194	83%	40	17%	234	44%	534
4 . Calaveras Sheriff's Dept.	43	84%	8	16%	51	66%	25	94%	2	6%	26	34%	78
5 . Colusa Sheriff's Dept.	18	79%	5	21%	23	56%	14	78%	4	22%	18	44%	41
6 . Contra Costa Sheriff's Dept.	860	86%	145	14%	1,005	63%	545	91%	56	9%	602	37%	1,607
7 . Del Norte Sheriff's Dept.	67	87%	10	13%	77	60%	40	79%	11	21%	51	40%	128
8 . El Dorado Sheriff's Dept.	156	91%	15	9%	171	48%	150	81%	36	19%	186	52%	357
9 . Fresno Sheriff's Dept.	2,071	88%	272	12%	2,343	75%	654	86%	109	14%	764	25%	3,107
10 . Glenn Sheriff's Dept.	85	85%	15	15%	100	72%	28	74%	10	26%	38	28%	138
11 . Humboldt Sheriff's Dept.	204	87%	31	13%	235	63%	113	82%	24	18%	137	37%	372
12 . Imperial Sheriff's Dept.	222	84%	41	16%	263	52%	220	90%	25	10%	245	48%	507
13 . Inyo Sheriff's Dept.	30	82%	7	18%	37	41%	44	84%	9	16%	53	59%	90
14 . Kern Sheriff's Dept.	1,357	87%	200	13%	1,557	70%	532	79%	142	21%	674	30%	2,231
15 . Kings Sheriff's Dept.	139	90%	15	10%	154	50%	123	80%	30	20%	153	50%	307
16 . Lake Sheriff's Dept.	151	85%	27	15%	178	63%	86	83%	18	17%	103	37%	281
17 . Lassen Sheriff's Dept.	44	87%	7	13%	50	57%	29	76%	9	24%	39	43%	89
18 . Los Angeles Sheriff's Dept.	11,788	88%	1,540	12%	13,328	75%	4,128	91%	433	9%	4,561	25%	17,889
19 . Madera Corrections Dept.	234	87%	35	13%	269	71%	104	93%	8	7%	112	29%	381
20 . Marin Sheriff's Dept.	227	89%	27	11%	254	79%	57	85%	10	15%	67	21%	321
21 . Mariposa Sheriff's Dept.	24	82%	5	18%	30	50%	27	90%	3	10%	30	50%	60
22 . Mendocino Sheriff's Dept.	170	88%	23	12%	193	65%	87	82%	19	18%	106	35%	299
23 . Merced Sheriff's Dept.	191	87%	28	13%	218	29%	491	90%	54	10%	545	71%	763
24 . Modoc Sheriff's Dept.	11	77%	3	23%	15	59%	8	77%	2	23%	10	41%	25
25 . Mono Sheriff's Dept.	15	90%	2	10%	17	49%	14	79%	4	21%	18	51%	35
26 . Monterey Sheriff's Dept.	663	88%	92	12%	755	66%	353	89%	44	11%	397	34%	1,152
27 . Napa Corrections Dept.	121	88%	16	12%	137	52%	115	90%	13	10%	127	48%	264
28 . Nevada Sheriff's Dept.	81	84%	15	16%	96	53%	71	83%	15	17%	86	47%	182
29 . Orange Sheriff's Dept.	2,700	88%	351	12%	3,051	49%	2,669	84%	513	16%	3,182	51%	6,233
30 . Placer Sheriff's Dept.	320	88%	45	12%	365	63%	178	83%	36	17%	214	37%	580
31 . Plumas Sheriff's Dept.	26	82%	6	18%	31	51%	23	78%	7	22%	30	49%	61
32 . Riverside Sheriff's Dept.	2,476	88%	331	12%	2,807	85%	407	82%	86	18%	493	15%	3,300
33 . Sacramento Sheriff's Dept.	1,729	88%	229	12%	1,957	54%	1,385	84%	261	16%	1,646	46%	3,603
34 . San Benito Sheriff's Dept.	64	91%	6	9%	70	57%	47	87%	7	13%	53	43%	124
35 . San Bernardino Sheriff's Dept.	3,761	87%	543	13%	4,304	79%	937	80%	237	20%	1,174	21%	5,478

Average Daily Population

Non-sentenced / Sentenced Male / Female

California County Jails - For Months Of January - March 2006

	<u>Jurisdiction</u>	Non-sentenced						Sentenced						Total
		Male		Female		Total		Male		Female		Total		
		#	%	#	%	#	%	#	%	#	%	#	%	
36 .	San Diego Sheriff's Dept.	2,844	86%	474	14%	3,318	65%	1,504	83%	314	17%	1,819	35%	5,137
37 .	San Diego Work Furlough	1	100%	0	0%	1	0%	250	85%	45	15%	296	100%	296
38 .	San Francisco Sheriff's Dept.	1,301	89%	156	11%	1,457	80%	321	88%	46	12%	366	20%	1,823
39 .	San Joaquin Sheriff's Dept.	740	87%	112	13%	852	60%	473	82%	101	18%	574	40%	1,426
40 .	San Luis Obispo Sheriff's Dept	191	87%	28	13%	219	42%	243	81%	57	19%	300	58%	519
41 .	San Mateo Sheriff's Dept.	509	88%	68	12%	577	53%	449	86%	73	14%	522	47%	1,099
42 .	Santa Ana Police Dept.	335	92%	30	8%	365	96%	11	72%	4	28%	15	4%	380
43 .	Santa Barbara Sheriff's Dept.	520	84%	97	16%	616	64%	297	85%	53	15%	351	36%	967
44 .	Santa Clara Corrections Dept.	2,626	87%	394	13%	3,020	67%	1,282	87%	197	13%	1,479	33%	4,500
45 .	Santa Clara Probation Dept.	0	0%	0	0%	0	0%	141	77%	43	23%	184	100%	184
46 .	Santa Cruz Sheriff's Dept.	232	90%	26	10%	258	45%	275	87%	41	13%	315	55%	573
47 .	Shasta Sheriff's Dept.	240	84%	46	16%	285	77%	71	82%	15	18%	86	23%	371
48 .	Sierra Sheriff's Dept.	9	100%	0	0%	9	84%	2	100%	0	0%	2	16%	11
49 .	Siskiyou Sheriff's Dept.	77	92%	6	8%	83	82%	16	91%	2	9%	18	18%	101
50 .	Solano Sheriff's Dept.	682	85%	116	15%	799	76%	214	86%	36	14%	250	24%	1,049
51 .	Sonoma Sheriff's Dept.	601	89%	77	11%	678	59%	392	85%	71	15%	462	41%	1,140
52 .	Stanislaus Sheriff's Dept.	685	87%	104	13%	790	59%	452	82%	97	18%	549	41%	1,339
53 .	Sutter Sheriff's Dept.	149	85%	26	15%	175	67%	68	78%	19	22%	87	33%	262
54 .	Tehama Sheriff's Dept.	83	74%	29	26%	112	63%	48	74%	17	26%	65	37%	176
55 .	Trinity Sheriff's Dept.	11	69%	5	31%	15	35%	25	86%	4	14%	29	65%	44
56 .	Tulare Sheriff's Dept.	685	87%	100	13%	784	58%	509	89%	66	11%	575	42%	1,359
57 .	Tuolumne Sheriff's Dept.	80	81%	19	19%	100	71%	35	85%	6	15%	41	29%	141
58 .	Ventura Sheriff's Dept.	743	88%	103	12%	846	52%	638	82%	142	18%	780	48%	1,626
59 .	Ventura Work Furlough	0	0%	0	0%	0	0%	92	80%	23	20%	115	100%	115
60 .	Yolo Sheriff's Dept.	295	87%	44	13%	339	83%	61	87%	9	13%	70	17%	409
61 .	Yuba Sheriff's Dept.	272	81%	63	19%	335	82%	60	81%	14	19%	74	18%	409
Statewide		47,092	88%	6,545	12%	53,638	67%	22,605	85%	3,923	15%	26,528	33%	80,166

Jail Populations: Quarter 1, 2005 Versus Quarter 1, 2006

Jurisdiction	Qtr 1, 2005	Qtr 1, 2006	Qtr 1, 2006 Minus Qtr 1, 2005	Qtr 1, 2005 To Qtr 1, 2006 % +/-	% of Total Increase or Decrease	Cum %	Cum Total
Los Angeles Sheriff's Dept.	17,031	17,890	859	5.0%	27.2%	27.19%	859
Orange Sheriff's Dept.	5,753	6,234	481	8.4%	15.2%	42.42%	1,340
Santa Clara Corrections Dept.	4,217	4,500	283	6.7%	9.0%	51.38%	1,623
San Bernardino Sheriff's Dept.	5,323	5,479	156	2.9%	4.9%	56.32%	1,779
San Joaquin Sheriff's Dept.	1,284	1,426	142	11.1%	4.5%	60.81%	1,921
Sacramento Sheriff's Dept.	3,467	3,604	137	4.0%	4.3%	65.15%	2,058
Fresno Sheriff's Dept.	2,983	3,106	123	4.1%	3.9%	69.04%	2,181
Stanislaus Sheriff's Dept.	1,223	1,339	116	9.5%	3.7%	72.71%	2,297
Merced Sheriff's Dept.	669	764	95	14.2%	3.0%	75.72%	2,392
Ventura Sheriff's Dept.	1,537	1,626	89	5.8%	2.8%	78.54%	2,481
Riverside Sheriff's Dept.	3,222	3,300	78	2.4%	2.5%	81.01%	2,559
Placer Sheriff's Dept.	516	580	64	12.4%	2.0%	83.03%	2,623
San Diego Work Furlough	233	296	63	27.0%	2.0%	85.03%	2,686
San Mateo Sheriff's Dept.	1,043	1,099	56	5.4%	1.8%	86.80%	2,742
San Diego Sheriff's Dept.	5,097	5,137	40	0.8%	1.3%	88.07%	2,782
Sonoma Sheriff's Dept.	1,104	1,140	36	3.3%	1.1%	89.21%	2,818
San Francisco Sheriff's Dept.	1,787	1,823	36	2.0%	1.1%	90.35%	2,854
Butte Sheriff's Dept.	499	534	35	7.0%	1.1%	91.45%	2,889
Lake Sheriff's Dept.	247	281	34	13.8%	1.1%	92.53%	2,923
Mendocino Sheriff's Dept.	272	298	26	9.6%	0.8%	93.35%	2,949
San Luis Obispo Sheriff's Dept.	494	519	25	5.1%	0.8%	94.14%	2,974
Marin Sheriff's Dept.	296	321	25	8.4%	0.8%	94.94%	2,999
Contra Costa Sheriff's Dept.	1,586	1,606	20	1.3%	0.6%	95.57%	3,019
El Dorado Sheriff's Dept.	338	357	19	5.6%	0.6%	96.17%	3,038
Monterey Sheriff's Dept.	1,133	1,151	18	1.6%	0.6%	96.74%	3,056
Napa Corrections Dept.	253	265	12	4.7%	0.4%	97.12%	3,068
Mariposa Sheriff's Dept.	48	60	12	25.0%	0.4%	97.50%	3,080
Trinity Sheriff's Dept.	34	43	9	26.5%	0.3%	97.78%	3,089
Lassen Sheriff's Dept.	80	89	9	11.2%	0.3%	98.07%	3,098
Siskiyou Sheriff's Dept.	91	100	9	9.9%	0.3%	98.35%	3,107
Tuolumne Sheriff's Dept.	132	141	9	6.8%	0.3%	98.64%	3,116
Kings Sheriff's Dept.	297	306	9	3.0%	0.3%	98.92%	3,125
Plumas Sheriff's Dept.	54	61	7	13.0%	0.2%	99.15%	3,132
Kern Sheriff's Dept.	2,224	2,231	7	0.3%	0.2%	99.37%	3,139
Shasta Sheriff's Dept.	365	371	6	1.6%	0.2%	99.56%	3,145
Sierra Sheriff's Dept.	6	11	5	83.3%	0.2%	99.72%	3,150
Glenn Sheriff's Dept.	135	138	3	2.2%	0.1%	99.81%	3,153
Inyo Sheriff's Dept.	87	89	2	2.3%	0.1%	99.87%	3,155
Tulare Sheriff's Dept.	1,357	1,359	2	0.1%	0.1%	99.94%	3,157
Madera Corrections Dept.	380	381	1	0.3%	0.0%	99.97%	3,158
Calaveras Sheriff's Dept.	76	77	1	1.3%	0.0%	100.00%	3,159
Yuba Sheriff's Dept.	409	409	0	0.0%	0.0%	100.00%	3,159
Mono Sheriff's Dept.	35	35	0	0.0%	0.0%	100.00%	3,159
Amador Sheriff's Dept.	88	87	-1	-1.1%	0.3%	0.28%	-1
Santa Clara Probation Dept.	185	183	-2	-1.1%	0.6%	0.83%	-3
Santa Cruz Sheriff's Dept.	577	574	-3	-0.5%	0.8%	1.67%	-6
San Benito Sheriff's Dept.	127	123	-4	-3.1%	1.1%	2.78%	-10
Tehama Sheriff's Dept.	180	176	-4	-2.2%	1.1%	3.89%	-14
Colusa Sheriff's Dept.	46	41	-5	-10.9%	1.4%	5.28%	-19
Ventura Work Furlough	121	116	-5	-4.1%	1.4%	6.67%	-24
Humboldt Sheriff's Dept.	379	372	-7	-1.8%	1.9%	8.61%	-31
Sutter Sheriff's Dept.	269	262	-7	-2.6%	1.9%	10.56%	-38
Modoc Sheriff's Dept.	36	25	-11	-30.6%	3.1%	13.61%	-49
Yolo Sheriff's Dept.	422	408	-14	-3.3%	3.9%	17.50%	-63
Del Norte Sheriff's Dept.	143	128	-15	-10.5%	4.2%	21.67%	-78
Nevada Sheriff's Dept.	197	181	-16	-8.1%	4.4%	26.11%	-94
Santa Ana Police Dept.	396	380	-16	-4.0%	4.4%	30.56%	-110
Solano Sheriff's Dept.	1,066	1,049	-17	-1.6%	4.7%	35.28%	-127
Santa Barbara Sheriff's Dept.	1,002	967	-35	-3.5%	9.7%	45.00%	-162
Alameda Sheriff's Dept.	4,049	4,007	-42	-1.0%	11.7%	56.67%	-204
Imperial Sheriff's Dept.	560	507	-53	-9.5%	14.7%	71.39%	-257
Oakland Police Dept.	103		-103	-100.0%	28.6%	100.00%	-360
	77,363	80,162	2,799	Note: Totals subject to slight variation due to rounding			
		Total Increase:	3,159				
		Total Decrease:	-360				

Interpretation of Table:
JAIL POPULATIONS: 1st Quarter '05 versus 1st Quarter '06

This table:

- summarizes the ADP results for the 61 jurisdictions in California reporting data from Type II, III, and IV jails;
- summarizes jurisdiction ADP results for the most recent quarter (Column C);
- compares jurisdiction ADP for the most recent quarter with the same quarter last year (Column B);
- ranks the jurisdictions in terms of gains or losses in ADP from high to low (Column D);
- lists the percentage growth or decline in ADP for each jurisdiction (Column E);
- lists the percentage of the overall State increase or decrease in ADP that is represented by each jurisdiction (Column F);
- lists, by jurisdiction, the cumulative percentage increase and decrease in the State ADP starting with the jurisdiction with the highest percentage of the increase and proceeding to the jurisdiction with the highest percentage of the decrease (Column G);
- lists, by jurisdiction, the cumulative total increase and decrease in the State ADP starting with the jurisdiction with the highest increase and proceeding to the jurisdiction with the biggest decrease (Column H); and,
- lists the jurisdictions that experienced decreases in their ADP as shaded.

Some important conclusions from this table are:

1. The two numbers at the bottom indicate the "total increase" in ADP (in this case 3,159) and "total decrease" in ADP (-360). In other words, the jurisdictions experiencing increases had a total increase of 3,159 ADP; and the jurisdictions experiencing decreases had a total decrease of 360 ADP. Subtracting 360 from 3,159 produces the overall increase of 2,799 between the first quarter of 2005 and the first quarter of 2006.
2. The Los Angeles County ADP increase of 859 is 27.2% of the total increase of 3,159. Forty-one jurisdictions had increases (down to Calaveras Sheriff's Department) with 2 jurisdictions reporting no increases (Yuba Sheriff's Department and Mono Sheriff's Department). When you get to Mono Sheriff's Department, you have accounted for 100% of the increases (100% of the cumulative total of 3,159).
3. Jurisdictions that experienced a decrease in ADP are listed from smallest decrease to largest decrease (Amador Sheriff's Department to Oakland Police Department). When you get to the bottom of the table, you have accounted for 100% of the total decreases of 360 inmates.
4. The cumulative percentage of ADP increase for the top four jurisdictions (Los Angeles Sheriff's Department to San Bernardino Sheriff's Departments) is 56.3%. In other words, four jurisdictions accounted for over 56% of the total ADP increase. Three jurisdictions (Alameda Sheriff's Department, Imperial Sheriff's Department, and Oakland Police Department) account for about 55.0% of the decreases. Please note that Oakland Police Department will no longer be reporting on the Jail Profile Survey due to the closure of its jail, which accounts for approximately 28.6% of the total decrease.