

TABLE 1: AVERAGE DAILY POPULATION
CALIFORNIA COUNTY JAILS 1993 AND 1994

COUNTY	AVERAGE DAILY POPULATION		PERCENTAGE INCREASE OR DECREASE
	1994	1993	
Statewide	69,233	67,576	2.5
Alameda	3,026	2,876	5.2
Alpine	0	0	0
Amador	42	40	5
Butte	286	274	4.4
Calaveras	52	44	18.2
Colusa	71	58	22.4
Contra Costa	1,254	1,384	-9.4
Del Norte	73	54	35.2
El Dorado	279	276	1.1
Fresno	2,002	2,113	-5.3
Glenn	78	70	11.4
Humboldt	206	227	-9.3
Imperial	341	323	5.6
Inyo	71	61	16.4
Kern	1,830	1,868	-2
Kings	315	301	4.7
Lake	177	186	-4.8
Lassen	89	88	1.1
Los Angeles	19,971	19,964	0
Madera	295	291	1.4
Marin	285	291	-2.1
Mariposa	29	26	11.5
Mendocino	212	208	1.9
Merced	487	519	-6.2
Modoc	28	21	33.3
Mono	31	29	6.9
Monterey	834	815	2.3
Napa	209	197	6.1
Nevada	151	145	4.1
Orange	5,180	4,798	8
Placer	382	336	13.7
Plumas	36	36	0
Riverside	2,329	2,466	-5.6
Sacramento	2,734	2,736	-0.1
San Benito	90	87	3.4
San Bernardino	3,326	3,105	7.1
San Diego	5,733	4,836	18.5
San Francisco	2,119	2,245	-5.6
San Joaquin	987	1,000	-1.3
San Luis Obispo	473	384	23.2
San Mateo	1,159	1,173	-1.2
Santa Barbara	881	900	-2.1
Santa Clara	4,229	4,121	2.6
Santa Cruz	524	522	0.4
Shasta	379	342	10.8
Sierra	3	8	-62.5
Siskiyou	83	72	15.3
Solano	702	680	3.2
Sonoma	867	799	8.5
Stanislaus	878	746	17.7
Sutter	150	173	-13.3
Tehama	90	112	-19.6
Trinity	47	49	-4.1
Tulare	1,112	1,129	-1.5
Tuolumne	105	99	6.1
Ventura	1,408	1,438	-2.1
Yolo	323	285	13.3
Yuba	180	150	20

**TABLE 2: AVERAGE DAILY POPULATION
CALIFORNIA COUNTY JAILS
UNSENTENCED/SENTENCED AND MALE/FEMALE
CALENDAR YEAR 1994**

COUNTY	UNSENTENCED						SENTENCED						TOTAL
	Male		Female		TOTAL		Male		Female		TOTAL		
	#	%	#	%	#	%	#	%	#	%	#	%	
Statewide	34,804	89	4,318	11	39,122	57	26,543	88	3,568	12	30,111	43	69,233
Alameda	1,638	92	142	8	1,780	59	1,084	87	162	13	1,246	41	3,026
Alpine	0	0	0	0	0	0	0	0	0	0	0	0	0
Amador	11	65	6	35	17	40	20	80	5	20	25	60	42
Butte	199	87	30	13	229	80	53	93	4	7	57	20	286
Calaveras	21	91	2	9	23	44	25	86	4	14	29	56	52
Colusa	23	88	3	12	26	37	40	89	5	11	45	63	71
Contra Costa	613	85	109	15	722	58	476	89	56	11	532	42	1,254
Del Norte	64	88	9	12	73	100	0	0	0	0	0	0	73
El Dorado	128	86	20	14	148	53	116	89	15	11	131	47	279
Fresno	1,406	89	166	11	1,572	79	365	85	65	15	430	21	2,002
Glenn	37	88	5	12	42	54	31	86	5	14	36	46	78
Humboldt	131	89	16	11	147	71	53	90	6	10	59	29	206
Imperial	164	92	14	8	178	52	150	92	13	8	163	48	341
Inyo	21	84	4	16	25	35	39	85	7	15	46	65	71
Kern	899	89	110	11	1,009	55	679	83	142	17	821	45	1,830
Kings	126	88	17	12	143	45	150	87	22	13	172	55	315
Lake	36	86	6	14	42	24	107	79	28	21	135	76	177
Lassen	18	78	5	22	23	26	53	80	13	20	66	74	89
Los Angeles	10,644	89	1,355	11	11,999	60	7,169	90	803	10	7,972	40	19,971
Madera	134	89	16	11	150	51	132	91	13	9	145	49	295
Marin	131	87	20	13	151	53	120	90	14	10	134	47	285
Mariposa	19	90	2	10	21	72	7	88	1	13	8	28	29
Mendocino	112	92	10	8	122	58	78	87	12	13	90	42	212
Merced	352	90	38	10	390	80	84	87	13	13	97	20	487
Modoc	5	83	1	17	6	21	19	86	3	14	22	79	28
Mono	13	87	2	13	15	48	15	94	1	6	16	52	31
Monterey	492	92	45	8	537	64	269	91	28	9	297	36	834
Napa	118	93	9	7	127	61	70	85	12	15	82	39	209
Nevada	69	92	6	8	75	50	68	89	8	11	76	50	151
Orange	1,880	89	225	11	2,105	41	2,701	88	374	12	3,075	59	5,180
Placer	186	90	20	10	206	54	156	89	20	11	176	46	382
Plumas	13	87	2	13	15	42	19	90	2	10	21	58	36
Riverside	1,303	90	145	10	1,448	62	786	89	95	11	881	38	2,329
Sacramento	1,223	87	183	13	1,406	51	1,128	85	200	15	1,328	49	2,734
San Benito	32	94	2	6	34	38	52	93	4	7	56	62	90
San Bernardino	2,055	88	292	12	2,347	71	842	86	137	14	979	29	3,326
San Diego	2,477	89	316	11	2,793	49	2,599	88	341	12	2,940	51	5,733
San Francisco	1,780	94	118	6	1,898	90	175	79	46	21	221	10	2,119
San Joaquin	456	88	61	12	517	52	395	84	75	16	470	48	987
San Luis Obispo	155	82	33	18	188	40	254	89	31	11	285	60	473
San Mateo	371	88	53	13	424	37	659	90	76	10	735	63	1,159
Santa Barbara	352	90	38	10	390	44	440	90	51	10	491	56	881
Santa Clara	2,093	89	253	11	2,346	55	1,640	87	243	13	1,883	45	4,229
Santa Cruz	211	91	20	9	231	44	264	90	29	10	293	56	524
Shasta	230	88	32	12	262	69	102	87	15	13	117	31	379
Sierra	2	100	0	0	2	67	0	0	1	100	1	33	3
Siskiyou	36	92	3	8	39	47	39	89	5	11	44	53	83
Solano	388	88	52	12	440	63	223	85	39	15	262	37	702
Sonoma	396	89	48	11	444	51	378	89	45	11	423	49	867
Stanislaus	431	83	88	17	519	59	328	91	31	9	359	41	878
Sutter	47	85	8	15	55	37	85	89	10	11	95	63	150
Tehama	47	85	8	15	55	61	31	89	4	11	35	39	90
Trinity	20	83	4	17	24	51	21	91	2	9	23	49	47
Tulare	235	84	45	16	280	25	746	90	86	10	832	75	1,112
Tuolumne	42	86	7	14	49	47	46	82	10	18	56	53	105
Ventura	439	89	56	11	495	35	799	88	114	12	913	65	1,408
Yolo	198	88	26	12	224	69	89	90	10	10	99	31	323
Yuba	82	87	12	13	94	52	74	86	12	14	86	48	180

TABLE 3: JAIL BOOKINGS
CALIFORNIA COUNTY JAILS 1994

COUNTY	TOTAL BOOKINGS		TOTAL BOOKINGS 1994
	Unsentenced	Sentenced	
Statewide	1,006,001	241,947	1,247,948
Alameda	55,344	2,507	57,851
Alpine	0	0	0
Amador	1,607	0	1,607
Butte	6,132	1,873	8,005
Calaveras	1,522	322	1,844
Colusa	1,395	61	1,456
Contra Costa	20,279	5,633	25,912
Del Norte	2,679	0	2,679
El Dorado	5,815	2,065	7,880
Fresno	30,810	3,613	34,423
Glenn	1,493	365	1,858
Humboldt	6,501	684	7,185
Imperial	7,732	770	8,502
Inyo	886	248	1,134
Kern	31,850	2,144	33,994
Kings	5,618	2,383	8,001
Lake	7,236	2,768	10,004
Lassen	1,412	412	1,824
Los Angeles	140,731	72,931	213,662
Madera	5,156	1,839	6,995
Marin	7,346	1,670 (1)	9,016
Mariposa	760	185	945
Mendocino	5,164	830	5,994
Merced	10,296	3,472	13,768
Modoc	567	145	712
Mono	353	324	677
Monterey	14,861	5,293 (1)	20,154
Napa	5,381	720	6,101
Nevada	3,469	708	4,177
Orange	58,577	14,814	73,391
Placer	7,754	659	8,413
Plumas	931	264	1,195
Riverside	40,820	7,713	48,533
Sacramento	50,508	14,107	64,615
San Benito	1,396	730	2,126
San Bernardino	52,677	5,594	58,271
San Diego	109,907	12,853	122,760
San Francisco	47,276	3,296	50,572
San Joaquin	19,788	3,576	23,364
San Luis Obispo	10,137	1,696	11,833
San Mateo	17,220	8,742	25,962
Santa Barbara	13,405	1,938 (1)	15,343
Santa Clara	60,005	14,712	74,717
Santa Cruz	12,808	943	13,751
Shasta	8,275	1,655	9,930
Sierra	240	55	295
Siskiyou	1,516	1,251	2,767
Solano	17,026	599	17,625
Sonoma	14,333	2,393	16,726
Stanislaus	18,724	7,589	26,313
Sutter	1,569	2,685	4,254
Tehama	3,180	706	3,886
Trinity	827	284	1,111
Tulare	14,777	7,293	22,070
Tuolumne	3,447	1,100	4,547
Ventura	22,039	9,567	31,606
Yolo	9,379	549	9,928
Yuba	5,065	619	5,684

(1) Based on four-day tally.

TABLE 4: AVERAGE LENGTH OF STAY* IN CALIFORNIA COUNTY JAILS CALENDAR YEAR 1994

COUNTY	AVERAGE DAILY POPULATION	BOOKINGS	AVERAGE LENGTH OF STAY
Statewide	69,233	1,247,948	20.2
Alameda	3,026	57,851	19.1
Alpine	0	0	0.0
Amador	42	1,607	9.5
Butte	286	8,005	13.0
Calaveras	52	1,844	10.3
Colusa	71	1,456	17.8
Contra Costa	1,254	25,912	17.7
Del Norte	73	2,679	9.9
El Dorado	279	7,880	12.9
Fresno	2,002	34,423	21.2
Glenn	78	1,858	15.3
Humboldt	206	7,185	10.5
Imperial	341	8,502	14.6
Inyo	71	1,134	22.9
Kern	1,830	33,994	19.6
Kings	315	8,001	14.4
Lake	177	10,004	6.5
Lassen	89	1,824	17.8
Los Angeles	19,971	213,662	34.1
Madera	295	6,995	15.4
Marin	285	9,016	11.5
Mariposa	29	945	11.2
Mendocino	212	5,994	12.9
Merced	487	13,768	12.9
Modoc	28	712	14.4
Mono	31	677	16.7
Monterey	834	20,154	15.1
Napa	209	6,101	12.5
Nevada	151	4,177	13.2
Orange	5,180	73,391	25.8
Placer	382	8,413	16.6
Plumas	36	1,195	11.0
Riverside	2,329	48,533	17.5
Sacramento	2,734	64,615	15.4
San Benito	90	2,126	15.5
San Bernardino	3,326	58,271	20.8
San Diego	5,733	122,760	17.0
San Francisco	2,119	50,572	15.3
San Joaquin	987	23,364	15.4
San Luis Obispo	473	11,833	14.6
San Mateo	1,159	25,962	16.3
Santa Barbara	881	15,343	21.0
Santa Clara	4,229	74,717	20.7
Santa Cruz	524	13,751	13.9
Shasta	379	9,930	13.9
Sierra	3	295	3.7
Siskiyou	83	2,767	10.9
Solano	702	17,625	14.5
Sonoma	867	16,726	18.9
Stanislaus	878	26,313	12.2
Sutter	150	4,254	12.9
Tehama	90	3,886	8.5
Trinity	47	1,111	15.4
Tulare	1,112	22,070	18.4
Tuolumne	105	4,547	8.4
Ventura	1,408	31,606	16.3
Yolo	323	9,928	11.9
Yuba	180	5,684	11.6

* ADP x 365 / # of bookings = ALS;
e.g., 180 inmates x 365 days / 5684 bookings = 11.6 days

1994 JAIL PROFILE DATA SUMMARY

SURVEY RESULTS

CORRECTIONS STANDARDS AND SERVICES DIVISION
BOARD OF CORRECTIONS

STATE OF CALIFORNIA
660 Bercut Drive
Sacramento, CA 95814-0185
(916) 445-5073

1994 JAIL PROFILE DATA SUMMARY

RESULTS

AVERAGE DAILY POPULATION

The state total ADP for jails for each of the last ten years was:

TABLE 1. TOTAL AVERAGE DAILY POPULATION

	85	86	87	88	89	90	91	92	93	94
	49,880	55,594	60,802	64,335	68,535	70,845	68,923	70,853	67,576	69,264

The jail population has increased by about 20,000 inmates since 1985. Over the last five years, however, the State's jail population has remained fairly stable. After the rapid growth in jail populations in the 1980's, the recent figures suggest that a "ceiling effect" has taken over and limited the growth of jail populations. Court ordered population caps and reduction of resources (leading to facility closures in some cases) have limited the bed space available. With existing facilities, we may be nearing the practical limit for the State's jail population.

The ADP for 1994 (69,264) is in the middle of the high/low range for the last five years. Jail populations will increase only when there is room to house additional inmates.

GENDER

The percentage of female inmates has remained almost constant over the last ten years as shown by the following table and associated chart.

TABLE 2. PERCENTAGE OF FEMALE INMATES IN THE JAIL POPULATION

	85	86	87	88	89	90	91	92	93	94
	10%	11%	11%	12%	12%	12%	11%	11%	11%	11%

Note: The line on the top of each chart is called a "trendline." The trendline is computed using the formula for linear regression. The "year" is one variable, and whatever is being illustrated on the vertical axis (such as ADP) is the other variable. The trendline is not designed to make projections into the future. The intent is to understand, in linear terms, how this variable has progressed over the last ten years.

CHART 1. TOTAL AVERAGE DAILY POPULATION

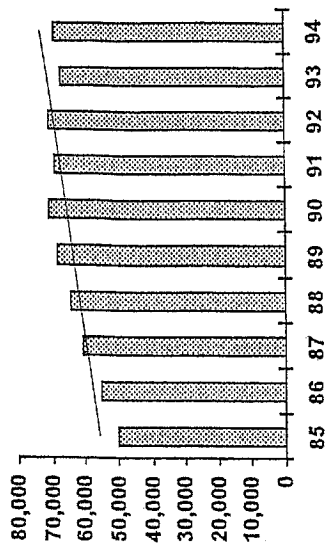
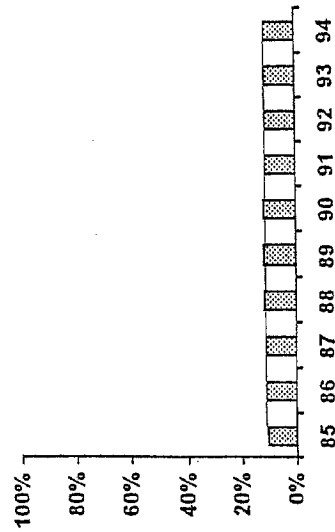


CHART 2. PERCENTAGE OF FEMALE INMATES



NON-SENTENCED VERSUS SENTENCED

There has been a disproportionate increase in the non-sentenced versus sentenced population. The non-sentenced population has accounted for 77% of the increase in jail population in the last ten years (with 23% of the increase being sentenced population). As the following table shows, 14,916 of the total state increase in ADP of 19,384 in the last ten years is due to an increase in non-sentenced inmates.

TABLE 3. NON-SENTENCED ADP

	85	86	87	88	89	90	91	92	93	94
	24,206	26,330	28,528	31,959	35,264	37,630	36,064	38,110	35,899	39,122

As can be seen in the charts on the right, the trend line in Chart 3 of the non-sentenced ADP is much steeper than the trend line for the sentenced ADP in Chart 4.

The table below includes the ADP for sentenced inmates. The total increase in sentenced inmates over the last ten years was 4,468 inmates. The sentenced inmate ADP has declined in each of the last five years, and is now 3,129 inmates below what it was in 1989.

TABLE 4. SENTENCED ADP

	85	86	87	88	89	90	91	92	93	94
	25,674	29,264	32,274	32,376	33,271	33,215	32,859	32,743	31,677	30,142

In 1985, non-sentenced inmates constituted 49% of the total state ADP. That percentage has been gradually increasing so that in 1994 the non-sentenced percentage had risen to 56%. We suspect that with the advent of the Three Strikes law, the percentage of non-sentenced inmates will continue to increase.

The group with the biggest percentage increase in non-sentenced inmates is females. The non-sentenced female ADP more than doubled between 1985 and 1994.

TABLE 5. PERCENT OF NON-SENTENCED ADP

	85	86	87	88	89	90	91	92	93	94
	49%	47%	47%	50%	51%	53%	52%	54%	53%	56%

CHART 3. NON-SENTENCED ADP

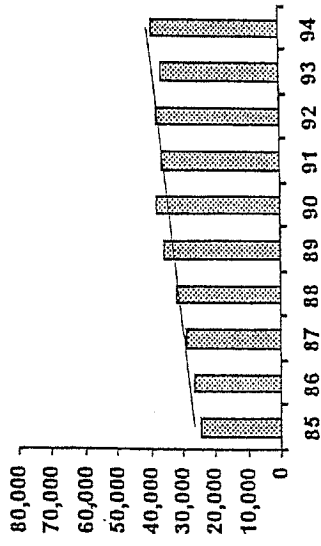


CHART 4. SENTENCED ADP

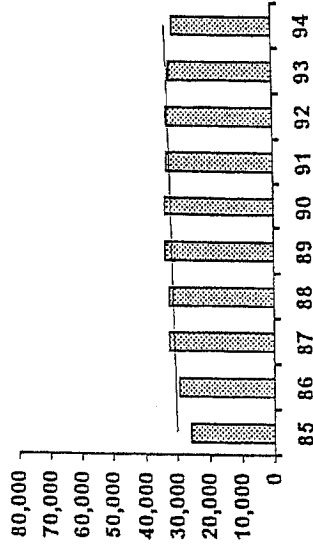
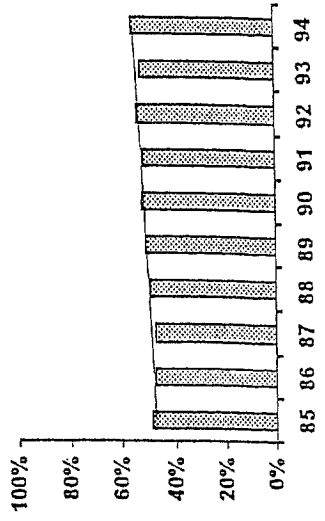


CHART 5. PERCENT OF NON-SENTENCED ADP



BOOKINGS

The total number of bookings rose from 1985 to 1988, stayed fairly stable from 1988 to 1990, and then began a four year steady decline.

TABLE 6. TOTAL BOOKINGS

	85	86	87	88	89	90	91	92	93	94
	1,225,110	1,292,103	1,332,463	1,438,053	1,419,036	1,448,591	1,383,753	1,344,106	1,267,111	1,247,948

The decline in the non-sentenced bookings actually began in 1989 and continued each year until 1994 when there was a small increase for the first time in five years. The sentenced bookings have been declining each year since 1991.

AVERAGE LENGTH OF STAY

The average length of stay in jails across the state in 1985 was 14.9 days. That average has been increasing each year since then (with the exception of a slight decline in 1988). The average length of stay in 1994 was 20.3 days. With the advent of the Three Strikes law, the average length of stay will probably continue to increase.

TABLE 7. AVERAGE LENGTH OF STAY

	85	86	87	88	89	90	91	92	93	94
	14.9	15.7	16.7	16.3	17.6	17.9	18.2	19.2	19.5	20.3

CHART 6. TOTAL BOOKINGS

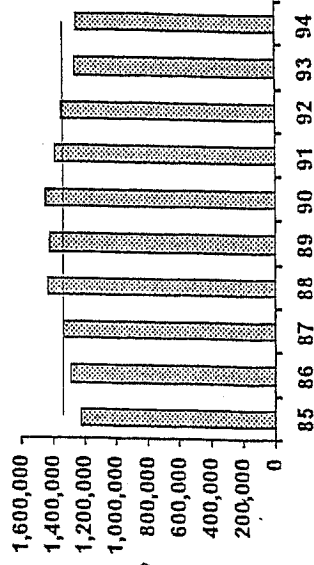
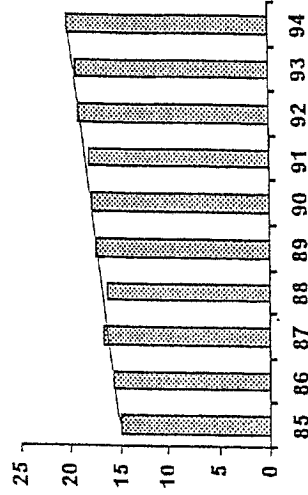


CHART 7. AVERAGE LENGTH OF STAY



Average Daily Population 1994

Statewide	69,233
Alameda	3,026
Amador	42
Butte	286
Calaveras	52
Colusa	71
Contra Costa	1,254
Del Norte	73
El Dorado	279
Fresno	2,002
Glenn	78
Humboldt	206
Imperial	341
Inyo	71
Kern	1,830
Kings	315
Lake	177
Lassen	89
Los Angeles	19,971
Madera	295
Marin	285
Mariposa	29
Mendocino	212
Merced	487
Modoc	28
Mono	31
Monterey	834
Napa	209
Nevada	151
Orange	5,180
Placer	382
Plumas	36
Riverside	2,329
Sacramento	2,734
San Benito	90
San Bernardino	3,326
San Diego	5,733
San Francisco	2,119
San Joaquin	987
San Luis Obisp	473
San Mateo	1,159
Santa Barbara	881
Santa Clara	4,229
Santa Cruz	524
Shasta	379
Siskiyou	83
Solano	702

Sonoma	867
Stanislaus	878
Sutter	150
Sutter	150
Tehama	90
Trinity	47
Tulare	1,112
Tuolumne	105
Ventura	1,408
Yolo	323
Yuba	180